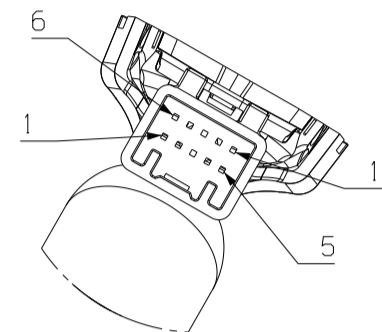
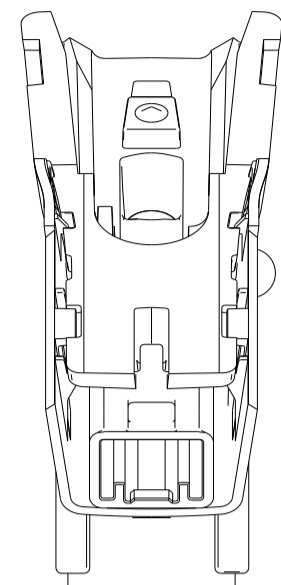


| SPEC | |
|------------|--------------------|
| EC | O |
| COMPASS | O |
| | (COLOR: GREEN) |
| MICROPHONE | X |
| HOMELINK | O |
| | (BACKLIGHT: WHITE) |
| SMARTBEAM | X |
| RCD | X |
| PRNDL LAMP | X |
| PG | X |

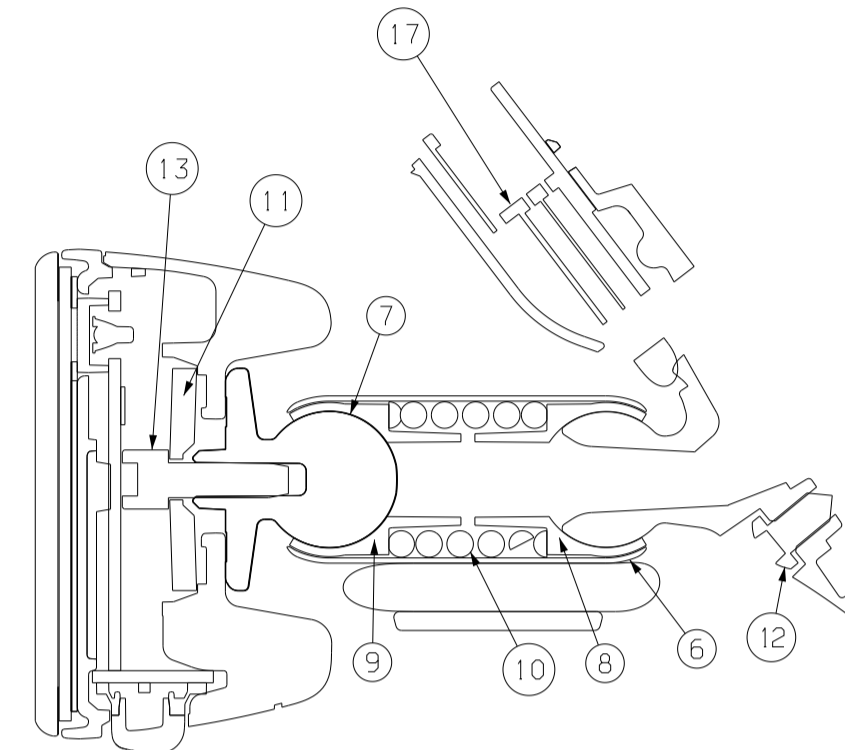
| MATING CONNECTOR ON VEHICLE HARNESS | |
|-------------------------------------|------------------------|
| HOUSING | TOYOTA P/N 90980-12368 |
| TERMINAL | TOYOTA P/N 90980-09895 |

| NO. | TOYOTA P/N | GENTEX P/N | PART NAME | MATERIAL | SURFACE TREATMENT | QUANTITY | MATERIAL TS |
|-----|-------------|------------|--------------------------------------|-----------------------|-------------------|----------|-------------|
| 1 | 87809-0WC40 | | CELL SUB-ASSY, INNER MIRROR W/DRIVER | | | 1 | |
| 2 | | 340-1272 | CASE FRONT S.A., INCLUDING BUTTONS | PC+ABS (COLOR: BLACK) | GNTX-130 | 1 | TSM5526G-1L |
| 3 | | 340-1223 | CASE REAR | PC+ABS (COLOR: BLACK) | GNTX-130 | 1 | TSM5526G-1L |
| 4 | | 343-0203 | LENS, AMBIENT | POLYCARBONATE | | 1 | TSM5513G-1 |
| 5 | | 350-0142 | MOUNT | ZINC | BLACK PAINT | 1 | |
| 6 | | 355-0010 | TUBE | STEEL | BLACK PAINT | 1 | |
| 7 | | 350-0169 | PIVOT BALL | ZINC | BLACK PAINT | 1 | |
| 8 | | 345-0822 | BEARING CUP, MOUNT | PP TALC | | 1 | |
| 9 | | 345-0821 | BEARING CUP, PIVOT | HOPE | | 1 | |
| 10 | | 418-0071 | SPRING | STEEL | | 1 | |
| 11 | | 409-0013 | WASHER | ALUMINUM | | 1 | |
| 12 | | 400-0037 | SCREW, TORX | STEEL | BLACK PAINT | 1 | |
| 13 | | 412-0010 | SCREW | STEEL | | 1 | |
| 14 | | 345-0868 | WIRE CLIP | ACETAL | | 1 | |
| 15 | | 345-0899 | LOWER WIRE COVER | PC+ABS | GNTX-130 | 1 | TSM5526G-1L |
| 16 | | 161-0161 | BUTTONS | SILICONE RUBBER | | 1 | |
| 17 | 90980-12367 | | HOUSING, CONNECTOR MALE | | | 1 | |

| CS | ISS | REV | MASS | REV. NO. | REVISION RECORD | E.C.NO. | DATE | REVR |
|----|-----|-----|------|----------|--|-----------|-----------|------------|
| | | 1 | 540g | | RELEASE FOR PRODUCTION PER R.D.D.P.: TYBK-5609 | 603WSY017 | 7/31/2013 | SLOTERBEEK |

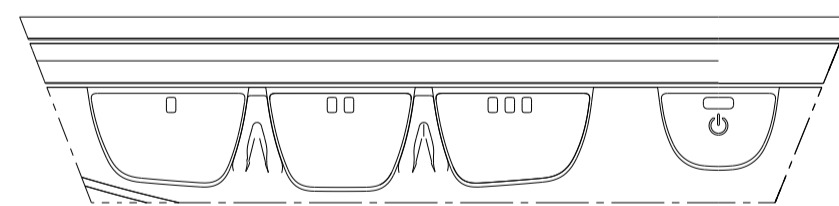
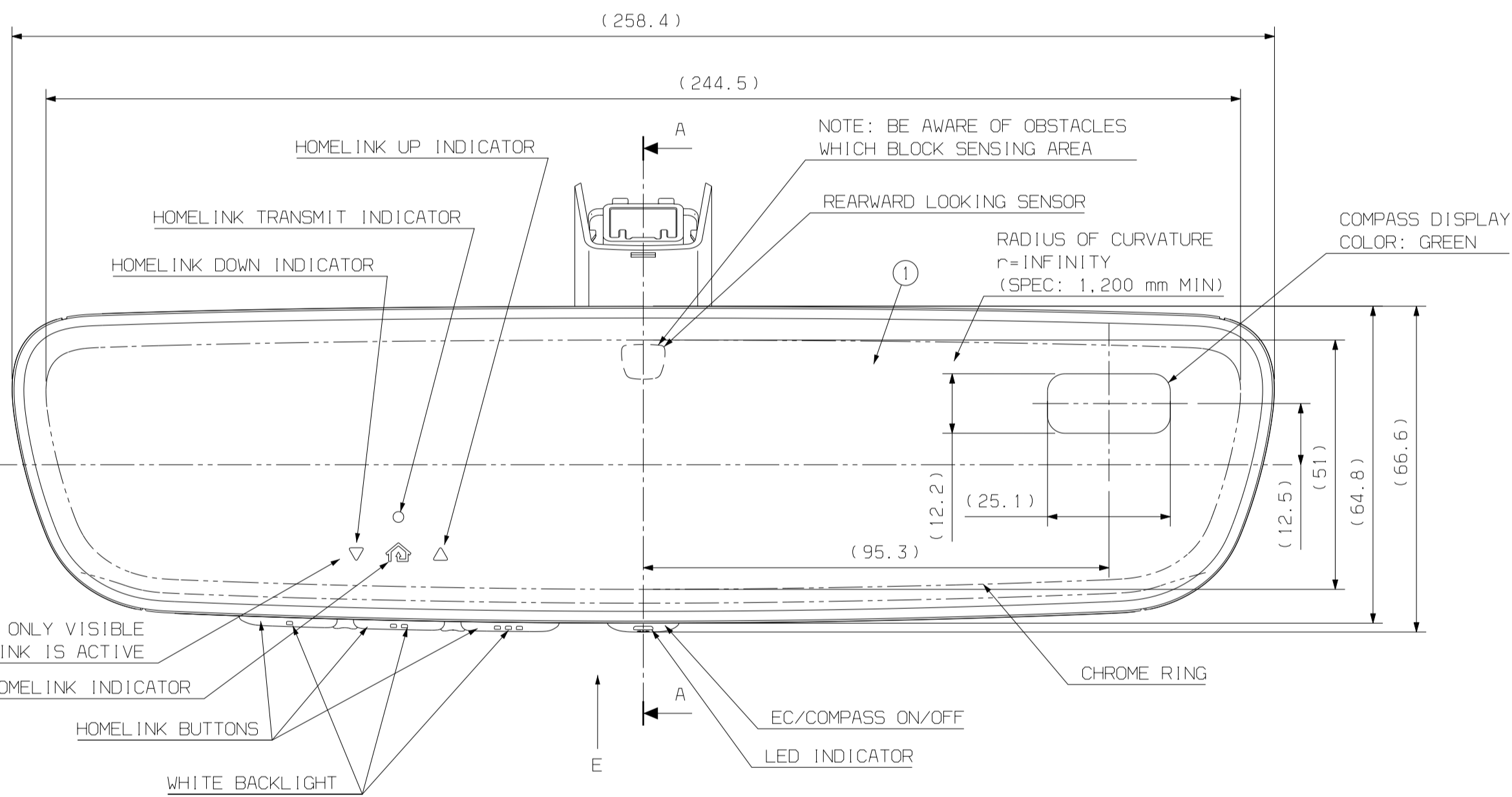
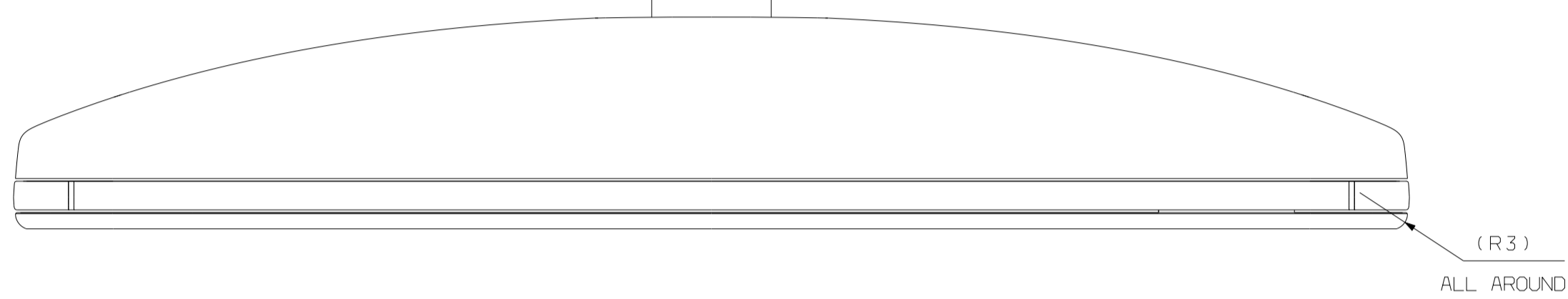


TOYOTA P/N 90980-12367
VIEW IN DIRECTION OF ARROW D



SECTION CUT A-A

| PIN | FUNCTION | CURRENT |
|--------------|--------------|-------------|
| 1 | IGNITION | 1500mA MAX |
| 2 | GROUND | 1500mA MAX |
| 3 | REVERSE | 15mA MAX |
| 4 | OEC FEED (+) | 300mA MAX * |
| 5 | OEC FEED (-) | 300mA MAX * |
| 6 | BATTERY | 300mA MAX |
| 7 | OPEN | NA |
| 8 | OPEN | NA |
| 9 | OPEN | NA |
| 10 | OPEN | NA |
| *PER ELEMENT | | |



VIEW IN DIRECTION OF ARROW E

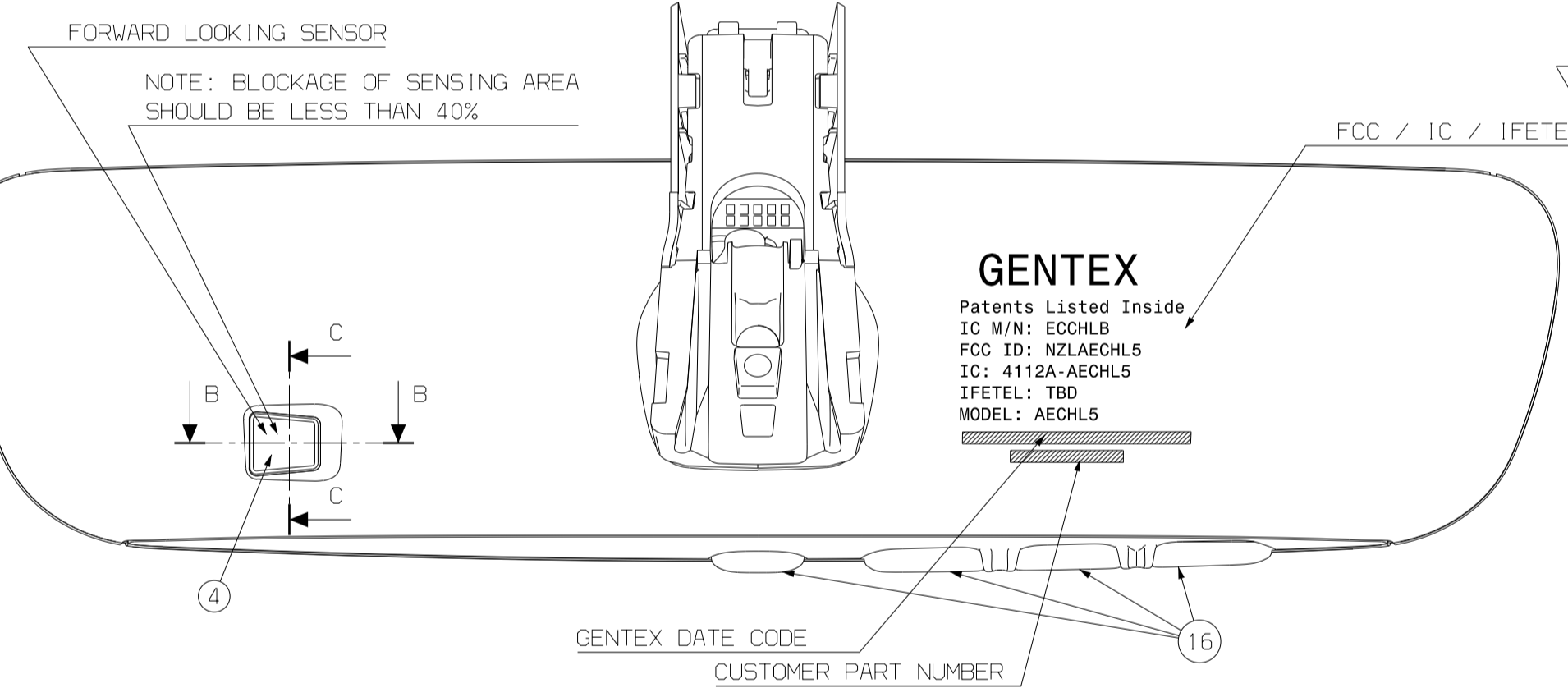
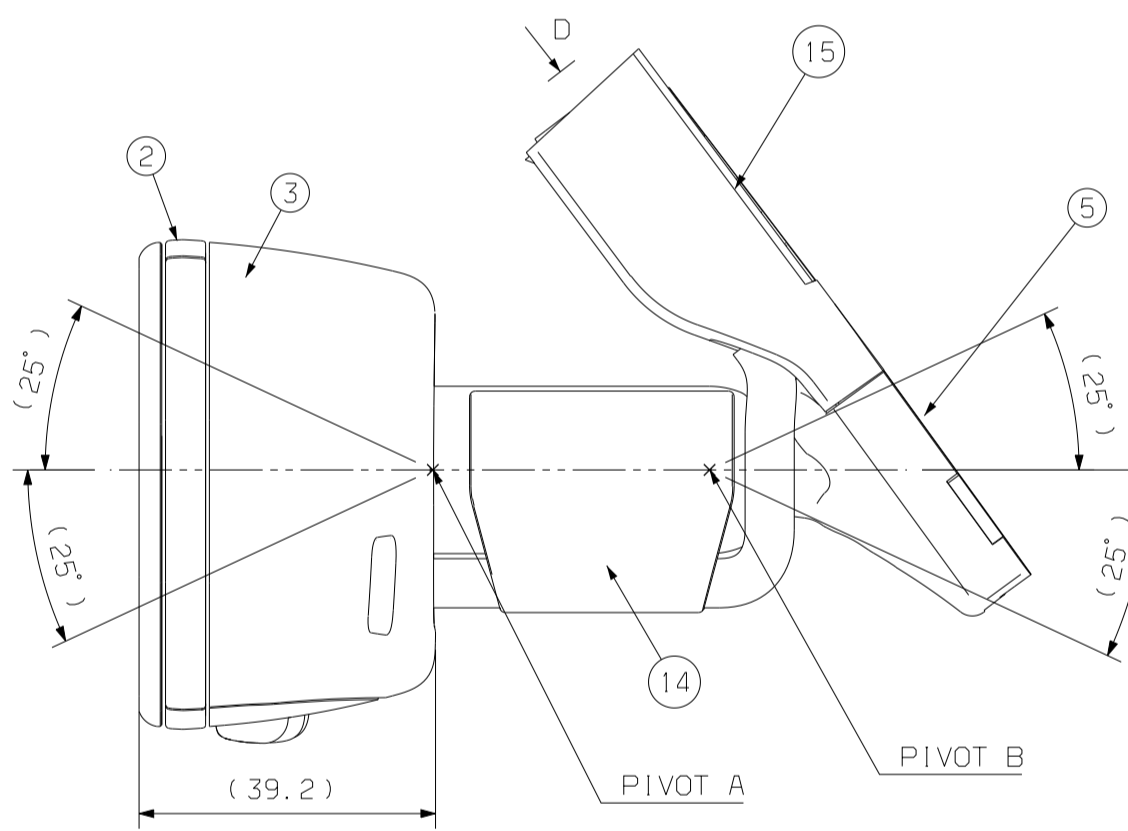


TABLE A:

| No. | Test Item | Test Method | Criteria | Responsibility Supplier | Toyota |
|-----|---------------------------------|---|---|-------------------------|--------|
| 1 | Mirror quality | As per TSC 3900G | As per TSC 3900G-1 (bubbles, inclusion, scratch and others). | 0 | |
| 2 | Mirror curvature | As per TSC 3900G | Concave face: R9000 MIN. Convex face: R3000 MIN. | 0 | |
| 3 | Mirror distortion factor | As per TSC 3900G | Within 2% | 0 | |
| 4 | Mirror angle adjustment range | As per TSC 3900G | Instruction in the drawing MIN. | 0 | |
| 5 | Mirror angle adjustment force | As per TSC 3900G | See Note #7. | 0 | |
| 6 | Chattering | As per TSC 3900G (Sweep from 20 to 200 Hz) | In range of the following graph (shaded area). Report results only. Actual pass/fail per vehicle test (No. 20). | 0 | |
| 7 | Wobbling | As per TSC 3900G | Shall be 1mm MAX. | 0 | |
| 8 | Angle adjustment durability | As per TSC 3900G (1500 cycles) | #1 to #7 shall be met. | 0 | |
| 9 | Vibration durability | As per TSC 3900G (4 hours vertical, 2 hours lateral, 2 hours longitudinal) | (1) Initial sample: #1 and #4 to #7 shall be met. No such defects as discoloration and cracking shall be found on the mirror surface. (2) High temp exposed sample: Rotational looseness shall not occur at the fastening part. #7 shall be met. | 0 | |
| 10 | Thermal cycle | As per TSC 3900G (-30° C X 7.5h, +23° C X 0.5h, +80° C X 15.5h, +23° C X 0.5h) X 4 cycles | Same as those in #9 (1). | 0 | |
| 11 | High temperature storage | As per TSC 3900G (+80° C X 240 hours) | Same as those in #9 (1). | 0 | |
| 12 | Low temperature storage | As per TSC 3900G (-30° C X 240 hours) | Same as those in #9 (1). | 0 | |
| 13 | Light resistance | As per TSL 0601G METHOD E | #1 shall be met. No such defects as discoloration and cracking shall be found on the mirror surface. | 0 | |
| 14 | Ozone resistance | As per TSC 3900G (Ozone Weatherometer; 72 hours) | Same as those in #13. | 0 | |
| 15 | Chemical resistance | As per TSC 3900G | Same as those in #13. | 0 | |
| 16 | Steam resistance | As per TSC 3900G (+90° C X 5 hours) | #1 shall be met. | 0 | |
| 17 | Energy absorbing | As per TSC 3902G | As per TSC 3902G-1 | 0 | |
| 18 | Flammability | Per FMVSS 302 | Burning speed 10 cm/min. MAX. | 0 | |
| 19 | Change in color by aging | As per TSL 0601G METHOD E | Measured color value: E*; 3.0 MAX. | 0 | |
| 20 | Chattering (vehicle drive test) | As per TSC3907G | Sensory evaluation: Grade 3 or better. | 0 | |

NOTES:

- THIS PART MUST COMPLY TO FMVSS #111, #302 AND FCC/IC/IFETEL.
- THIS PART MUST COMPLY TO TEST SPECIFICATION IN TABLE A.
- MOUNTING SCREW TORX T-20 TORQUE SPEC: 1.1- 1.9 NM.
- EXTERIOR SURFACES TO BE TEXTURED AS INDICATED PER GNTX-130 OR EQUIVALENT. A MASK OF 0.38mm (WIDTH) PERMITTED ON PARTING LINES.
- THIS MIRROR SHALL COMPLY WITH TSH3130G EXCLUDING SPOT AND FRICTION TEST.
- 0.25mm MISMATCH ALLOWED IN INSERTED AREAS.
- PIVOT ADJUSTMENT TORQUE
PIVOT A= 0.88 NM TO 3.30 NM
PIVOT B= 1.80 NM TO 4.60 NM
PIVOT B TORQUE SHALL BE GREATER THAN PIVOT A BY 0.10 NM MIN.
ADJUSTMENT ANGLE SHOWN IS FOR AN INDEPENDENT PIVOT FROM NEUTRAL POSITION. ADJUSTMENT AT A PIVOT IN COMBINATION WITH ADJUSTMENT OF OTHER PIVOT COULD RESULT IN INTERFERENCE.
- THIS PART SHALL CONFORM TO SUB-PARAGRAPH "SUBSTANCE PROHIBITION AND RESTRICTION" IN TS20001G.
- THIS PRODUCT INCORPORATES HOMELINK V UNIVERSAL TRANSCEIVER.
- THE VOLUME OF PART VOC MUST COMPLY TO TIS 01204-00232.
- THIS PRODUCT IS COMPENSATED FOR USE ON VEHICLES WITH NORMAL GLASS.
- PARTS SHALL CONFORM TO TSZ6005G. (NOT APPLICABLE. PLASTIC AND RUBBER PARTS OF THIS PRODUCT ARE LESS THAN 100g)
- BUTTONS SHOULD NOT STICK THROUGH -30°C TO +80°C TEMP RANGE.
- THIS COMPASS SETTING IS FOR THE DRIVER POSITIONED ON THE LH SIDE OF THE VEHICLE.

| CAD DATA IS MASTER | | | |
|--|---|--------------------------------|-------------------|
| 3D DATA LEVEL | DA | DATA PATTERN | 0:2D (1):3D+2D |
| E.CI NO. 603WSY017 | REVISION RECORD RELEASE FOR PRODUCTION PER R.D.D.P.: TYBK-5609 | MASS 540g | MASS TOL. ±MC |
| TOYOTA PART NAME MIRROR ASSY, INNER RR VIEW | | TOYOTA PART NO. 87810-0WM20 | |
| APPROVED | CHECKED | CHECKED | 1/1 |
| TYBK5 | | TOYOTA AUTO BODY CO., LTD | |

| APPROVED | DATE | TITLE | SCALE | DWG NO | REV |
|--|-----------|---|-------|-------------------------|-----|
| MIKE DEHAAN | 7/31/2013 | MIRROR ASSY, INNER RR VIEW | 1:1 | CP 87810-0WM20 | 1 |
| INTERPRET DIM AND TOL PER ASME Y14.5M - 1994 | | NVS SYMBOLS SPECIFY FEATURES REQUIRING SPECIAL CONSIDERATION. SEE CONTROL PLAN. | | DRAWN BY E. SLOTTERBEEK | |
| THIRD ANGLE PROJECTION | | SCALE 1:1 | | DATE 7/31/2013 | |
| GENTEX CORPORATION | | 600 NORTH CENTENNIAL ST ZEELAND, MICHIGAN 49464 (616) 772-1800 | | SHEET 1 OF 1 | |