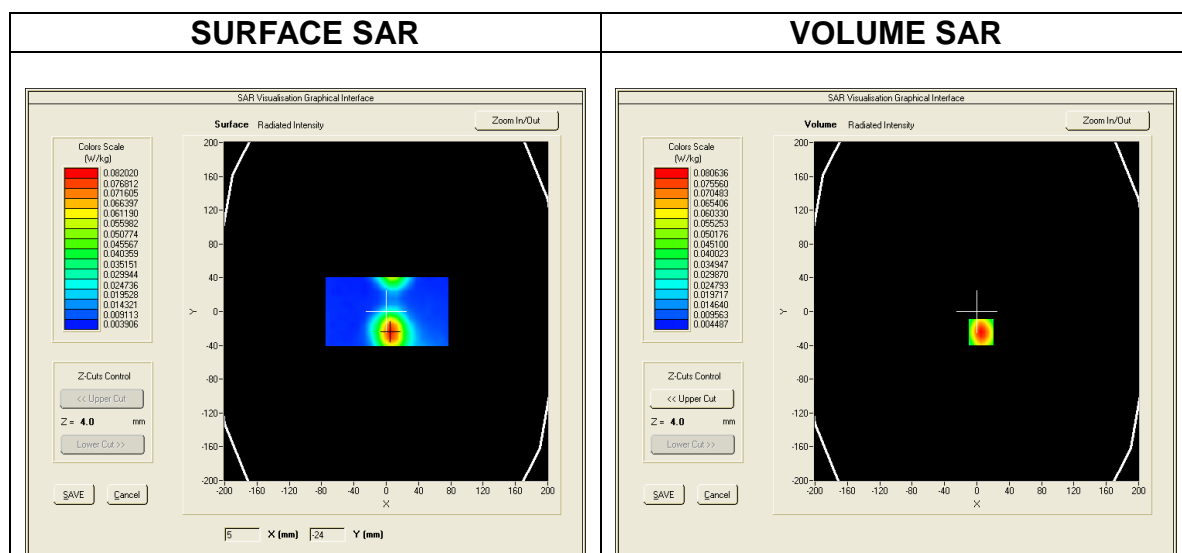


MEASUREMENT 21
Date of measurement: 2016/07/07

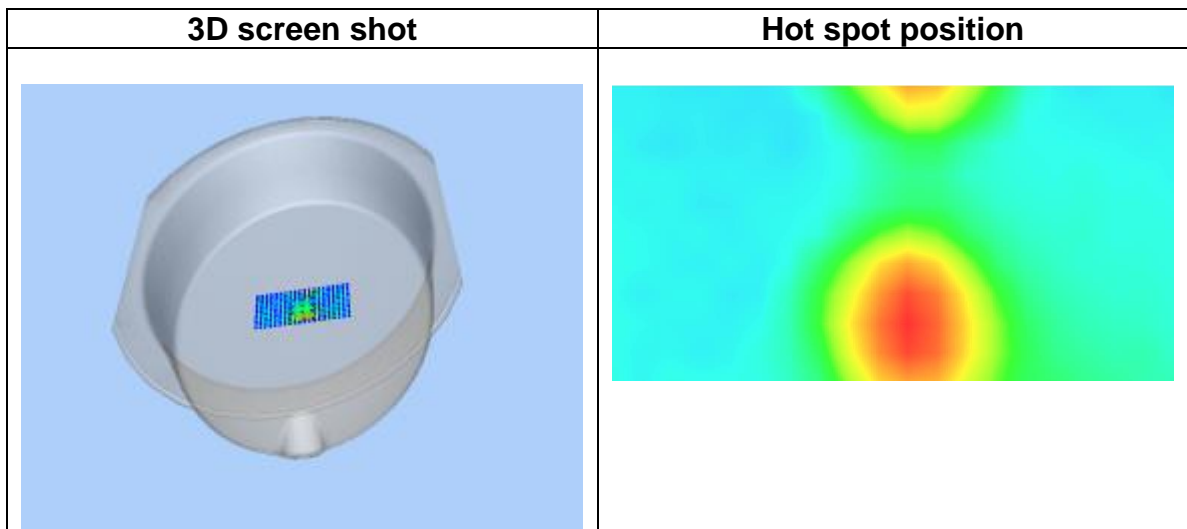
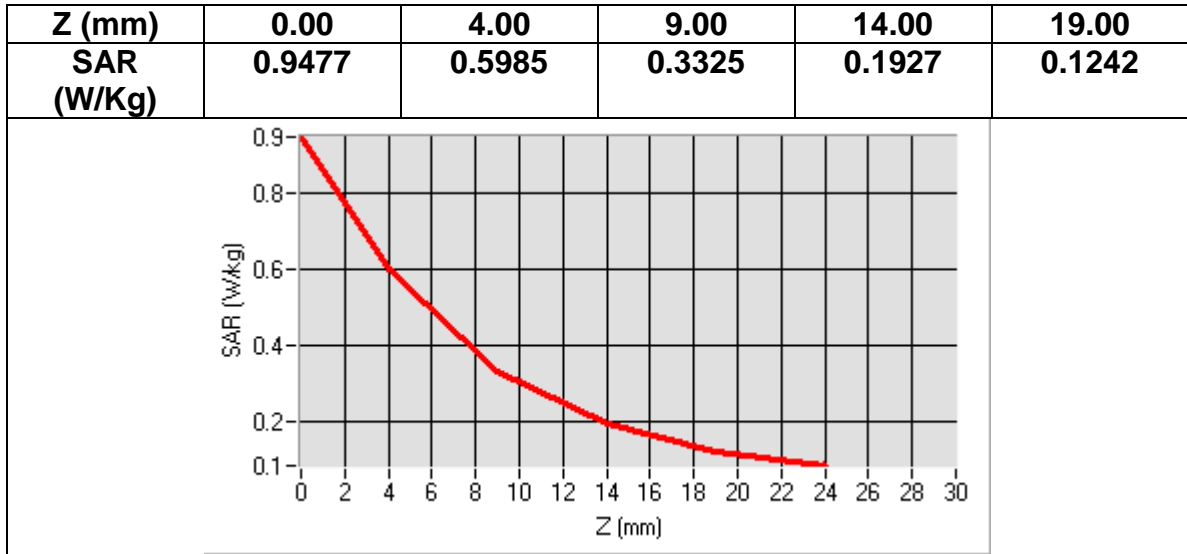
<u>Area Scan</u>	<u>dx=8mm dy=8mmh= 5.00 mm</u>
<u>Zoom Scan</u>	<u>7x7x7,dx=5mm dy=5mm dz=5mm, dx=8mm dy=8mm, h= 5.00 mm</u>
<u>Phantom</u>	<u>ELLI16</u>
<u>Device Position</u>	<u>Front</u>
<u>Band</u>	<u>GSM1900+VOCIE</u>
<u>Channels</u>	<u>Middle</u>
<u>Signal</u>	<u>TDMA (Crest factor: 8.0)</u>

Frequency (MHz)	1880.000000
Relative permittivity (real part)	51.181801
Relative permittivity (imaginary part)	14.969100
Conductivity (S/m)	1.563439
Variation (%)	-0.840000



Maximum location: X=-58.00, Y=7.00
SAR Peak: 1.06 W/kg

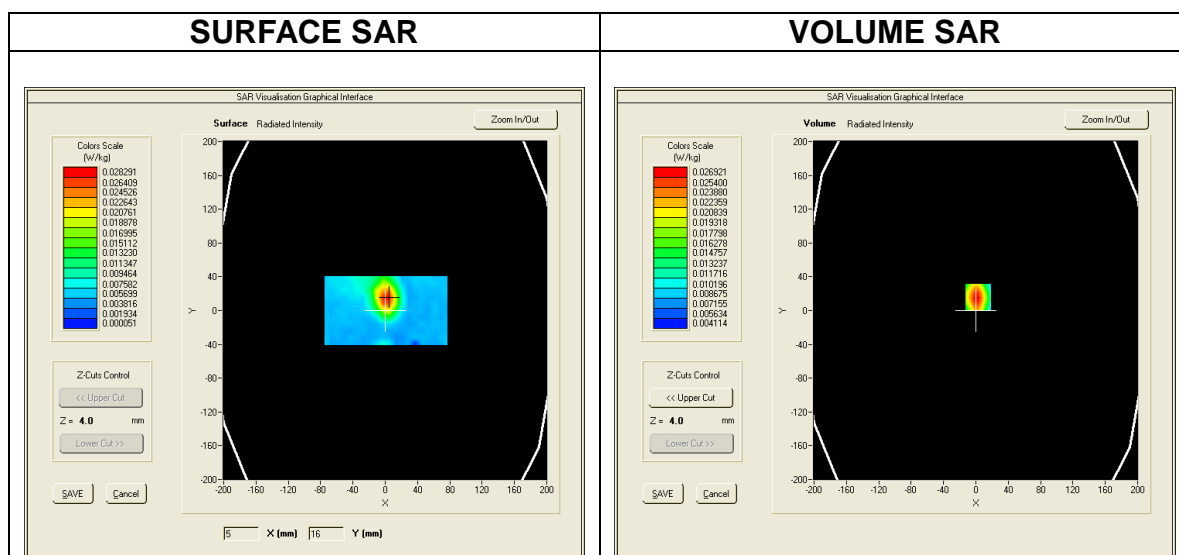
SAR 10g (W/Kg)	0.360372
SAR 1g (W/Kg)	0.638524



MEASUREMENT 22
Date of measurement: 2016/07/07

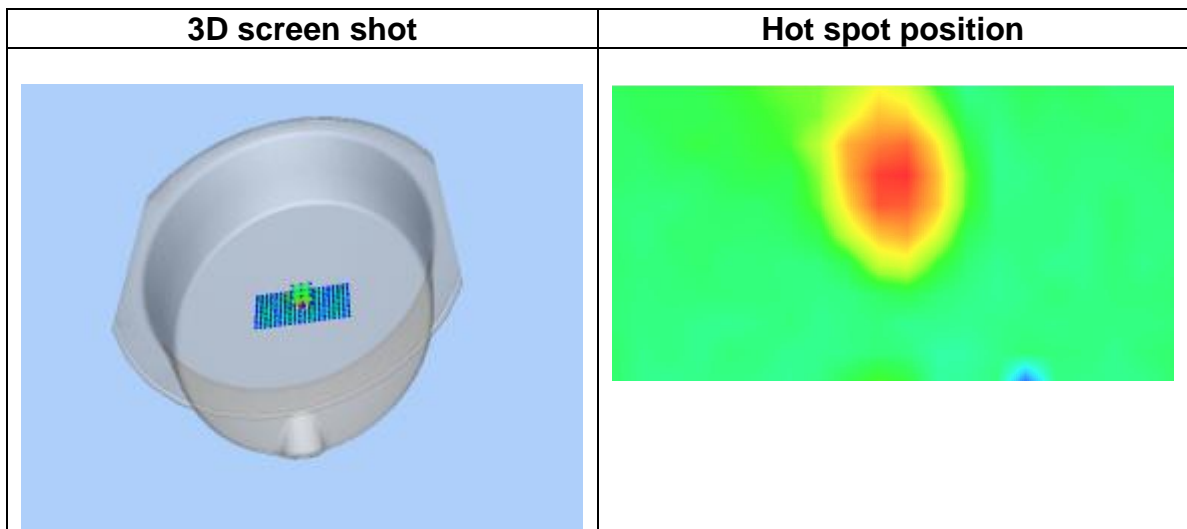
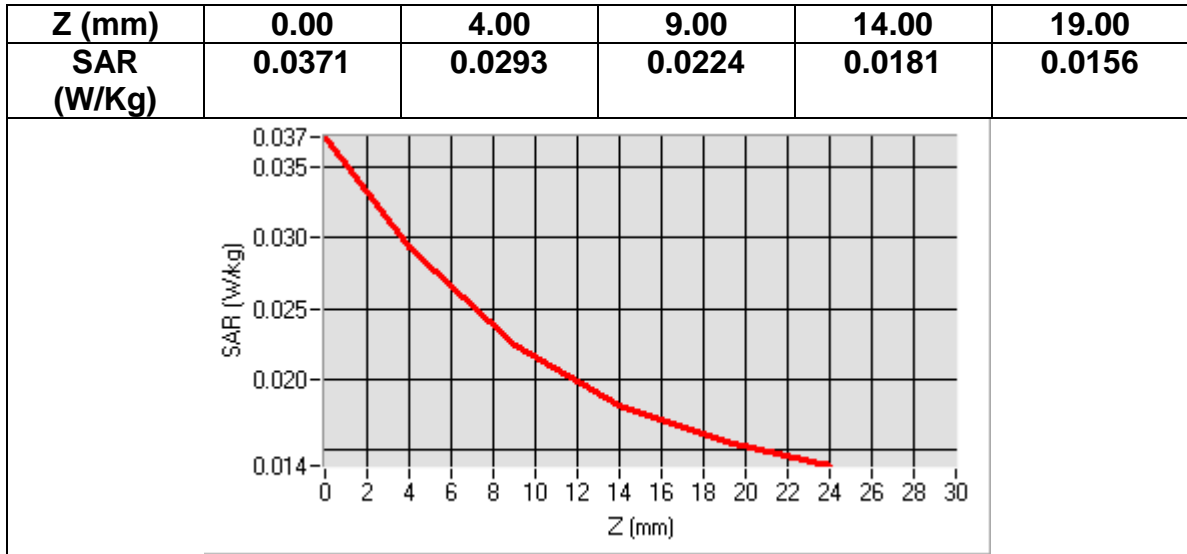
Area Scan	<u>dx=8mm dy=8mmh= 5.00 mm</u>
Zoom Scan	<u>7x7x7,dx=5mm dy=5mm dz=5mm, dx=8mm dy=8mm, h= 5.00 mm</u>
Phantom	<u>ELLI16</u>
Device Position	<u>Bottom</u>
Band	<u>GSM1900+VOICE</u>
Channels	<u>Middle</u>
Signal	<u>TDMA (Crest factor: 8.0)</u>

Frequency (MHz)	1880.000000
Relative permittivity (real part)	53.299999
Relative permittivity (imaginary part)	14.560000
Conductivity (S/m)	1.520711
Variation (%)	-3.680000



Maximum location: X=5.00, Y=9.00
SAR Peak: 0.05 W/kg

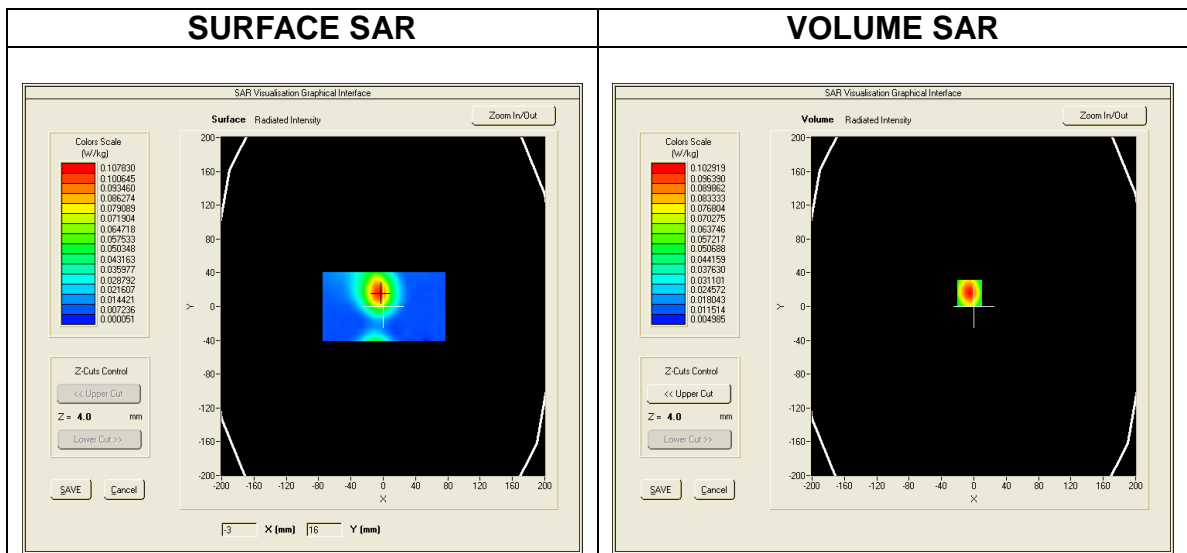
SAR 10g (W/Kg)	0.025402
SAR 1g (W/Kg)	0.033075



MEASUREMENT 23
 Date of measurement: 2016/07/07

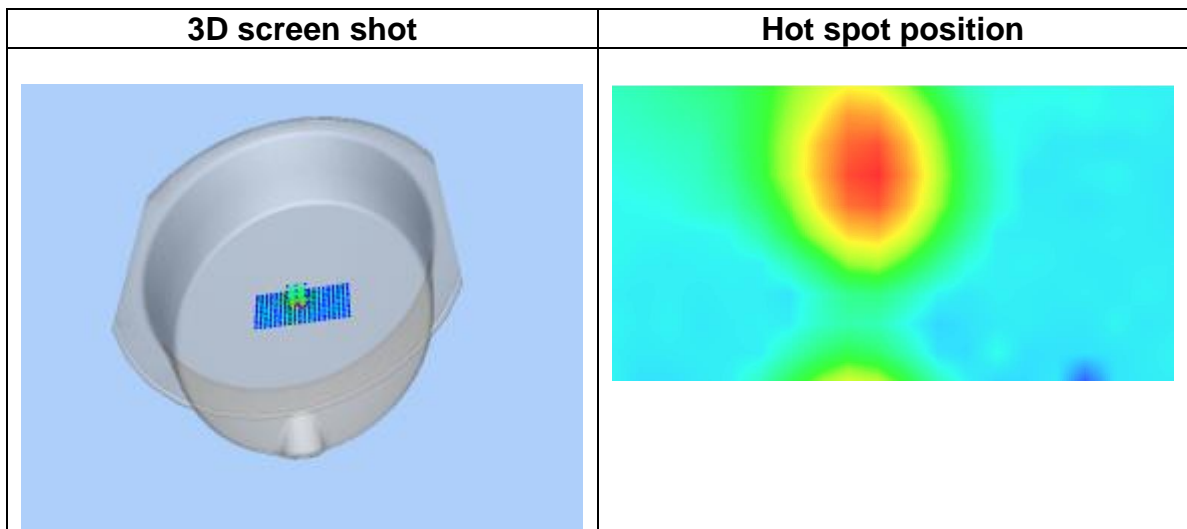
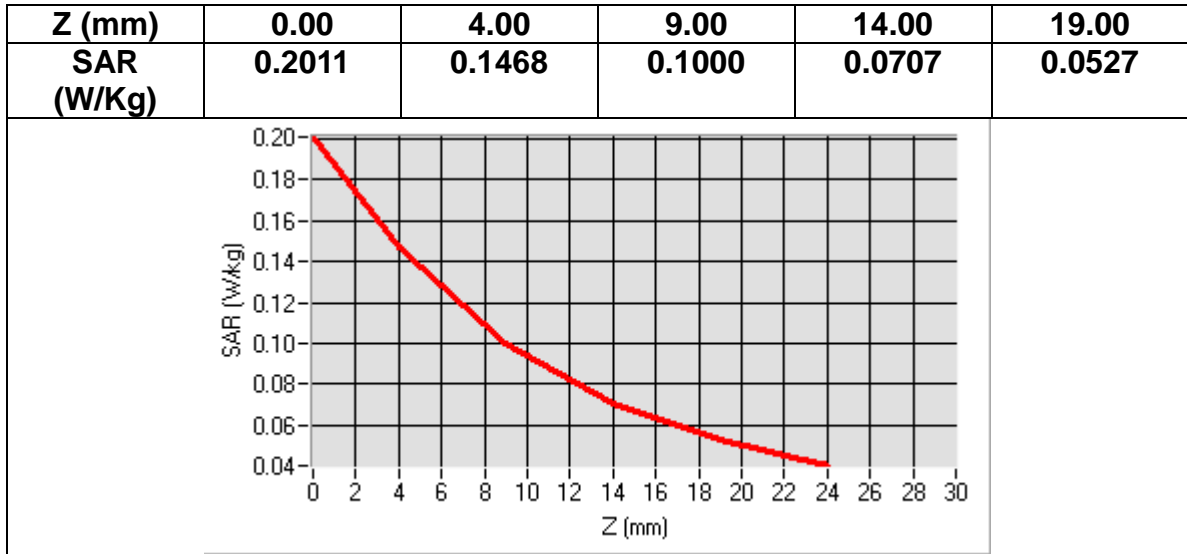
Area Scan	<u>dx=8mm dy=8mmh= 5.00 mm</u>
Zoom Scan	<u>7x7x7,dx=5mm dy=5mm dz=5mm, dx=8mm dy=8mm, h= 5.00 mm</u>
Phantom	<u>ELLI16</u>
Device Position	<u>Left</u>
Band	<u>GSM1900+VOICE</u>
Channels	<u>Middle</u>
Signal	<u>TDMA (Crest factor: 8.0)</u>

Frequency (MHz)	1880.000000
Relative permittivity (real part)	53.299999
Relative permittivity (imaginary part)	14.560000
Conductivity (S/m)	1.520711
Variation (%)	1.820000



Maximum location: X=3.00, Y=-16.00
SAR Peak: 0.22 W/kg

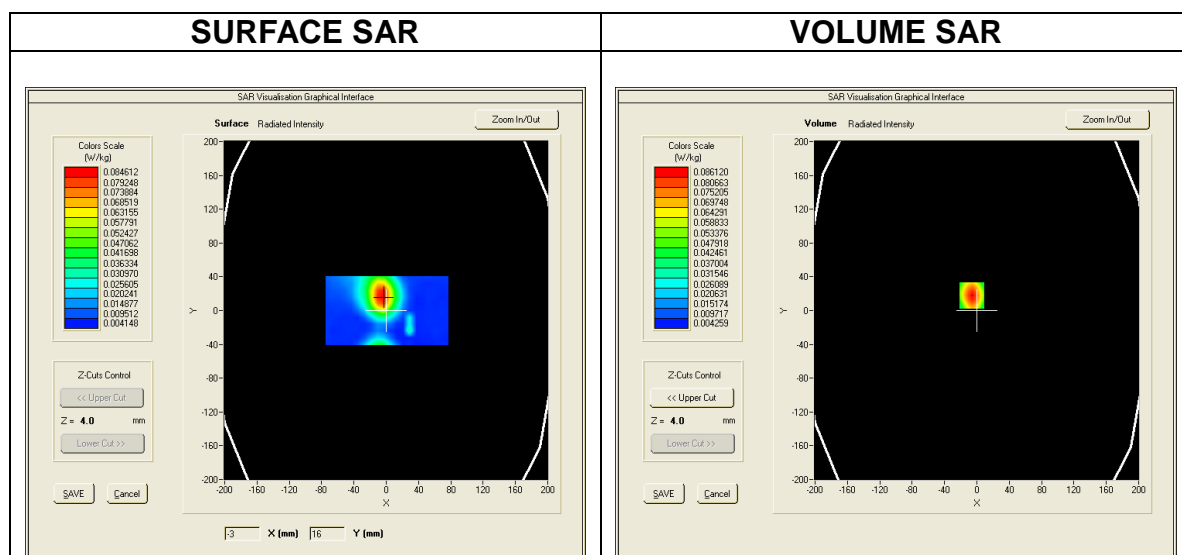
SAR 10g (W/Kg)	0.101670
SAR 1g (W/Kg)	0.152610



MEASUREMENT 24
Date of measurement: 2016/07/07

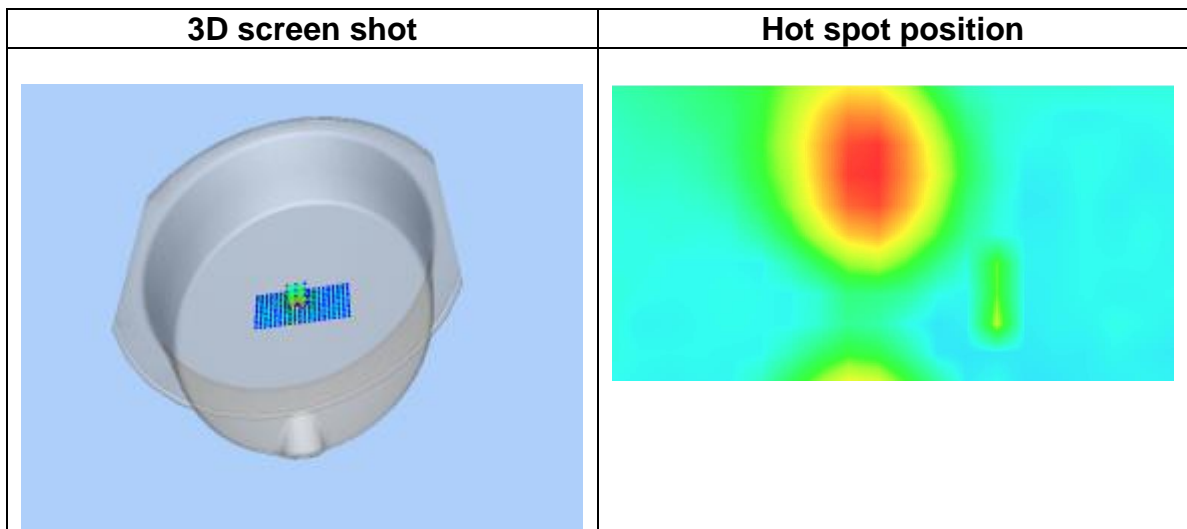
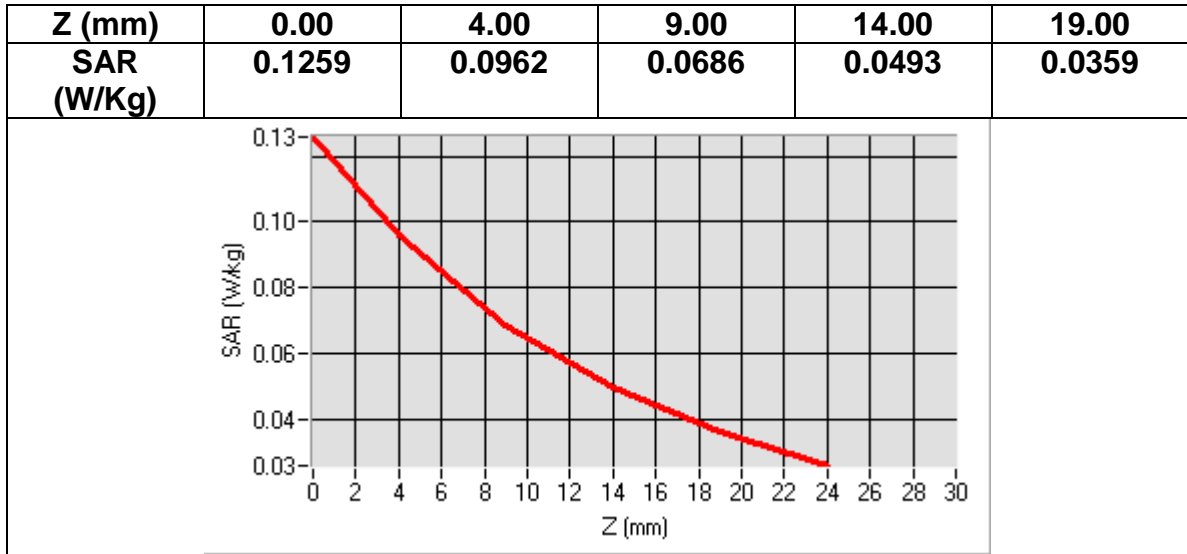
Area Scan	<u>dx=8mm dy=8mmh= 5.00 mm</u>
Zoom Scan	<u>7x7x7,dx=5mm dy=5mm dz=5mm, dx=8mm dy=8mm, h= 5.00 mm</u>
Phantom	<u>ELL16</u>
Device Position	<u>Right</u>
Band	<u>GSM1900+VOICE</u>
Channels	<u>Middle</u>
Signal	<u>TDMA (Crest factor: 8.0)</u>

Frequency (MHz)	1880.000000
Relative permittivity (real part)	53.299999
Relative permittivity (imaginary part)	14.560000
Conductivity (S/m)	1.520711
Variation (%)	-1.650000



Maximum location: X=-2.00, Y=15.00
SAR Peak: 0.14 W/kg

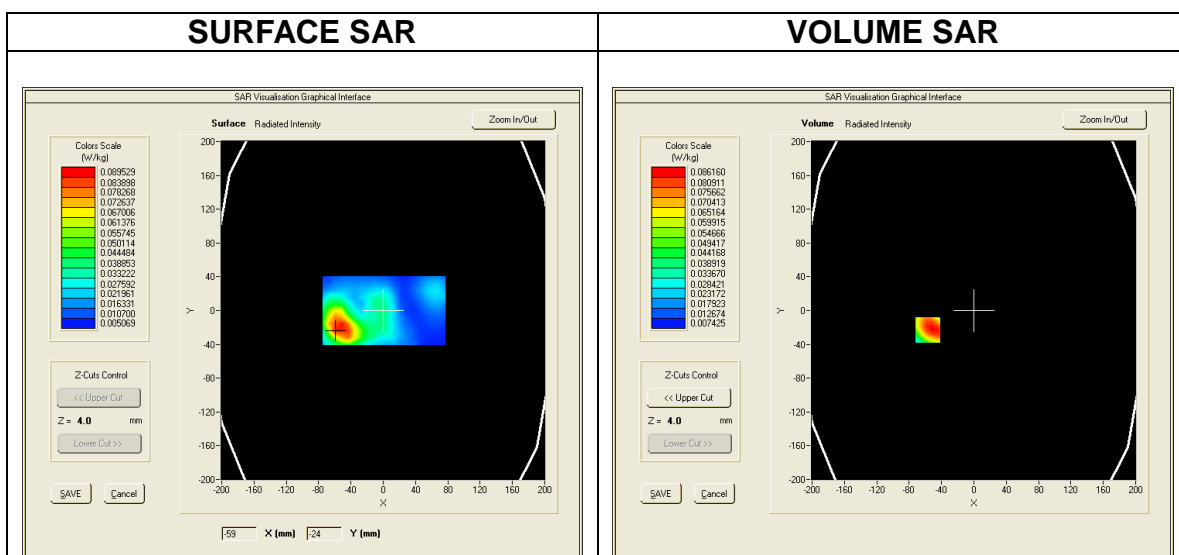
SAR 10g (W/Kg)	0.066745
SAR 1g (W/Kg)	0.099230



MEASUREMENT 25
Date of measurement: 2016/07/07

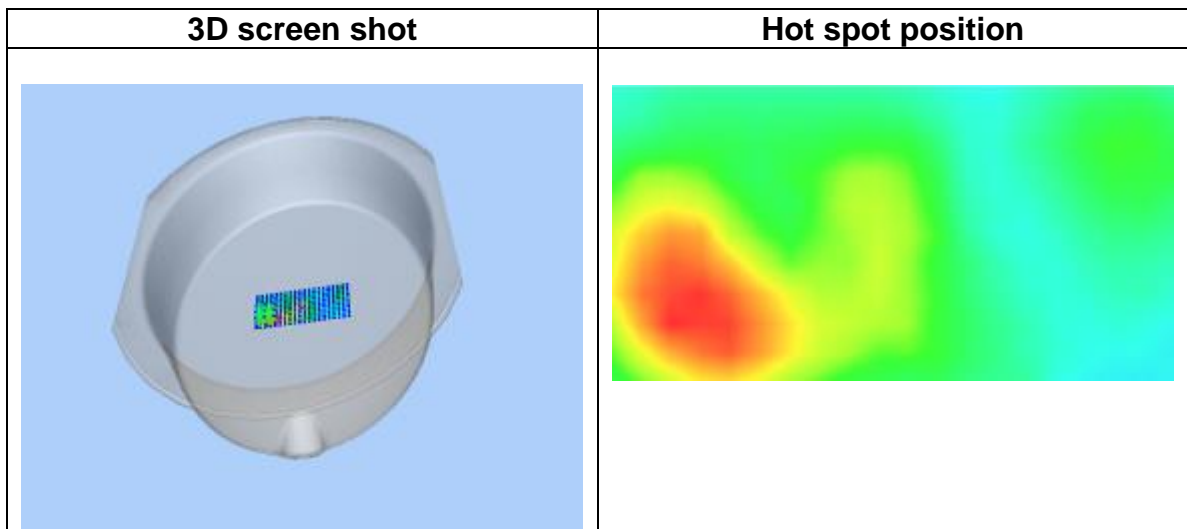
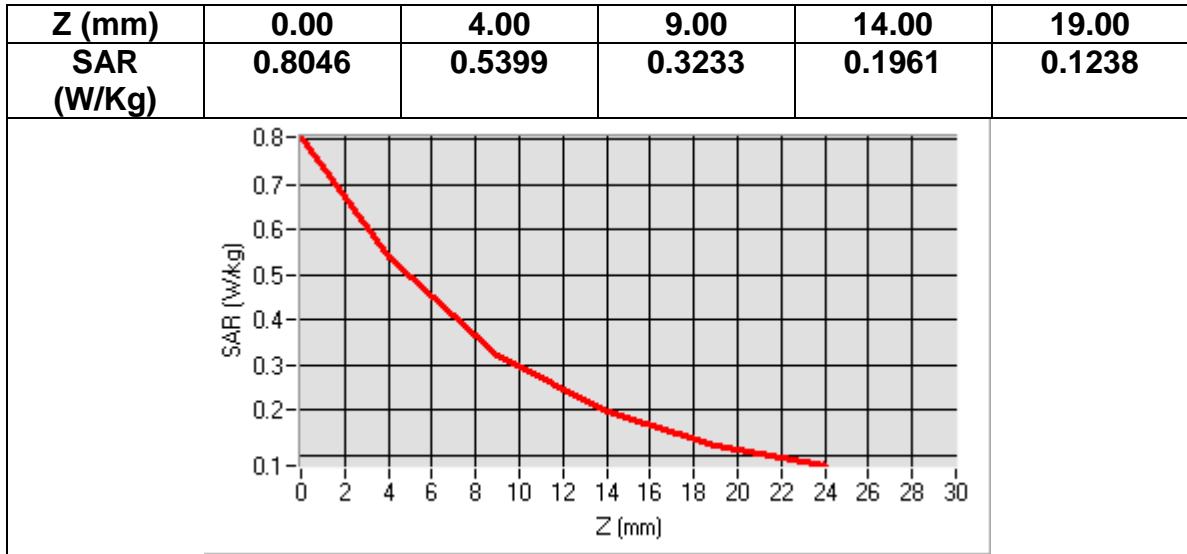
Area Scan	<u>dx=8mm dy=8mmh= 5.00 mm</u>
Zoom Scan	<u>7x7x7,dx=5mm dy=5mm dz=5mm, dx=8mm dy=8mm, h= 5.00 mm</u>
Phantom	<u>ELL116</u>
Device Position	<u>Back</u>
Band	<u>GSM1900+GPRS(4up1down)</u>
Channels	<u>Middle</u>
Signal	<u>TDMA (Crest factor: 2.0)</u>

Frequency (MHz)	1880.000000
Relative permittivity (real part)	53.299999
Relative permittivity (imaginary part)	14.560000
Conductivity (S/m)	1.520711
Variation (%)	0.390000



Maximum location: X=-51.00, Y=-22.00
SAR Peak: 0.89 W/kg

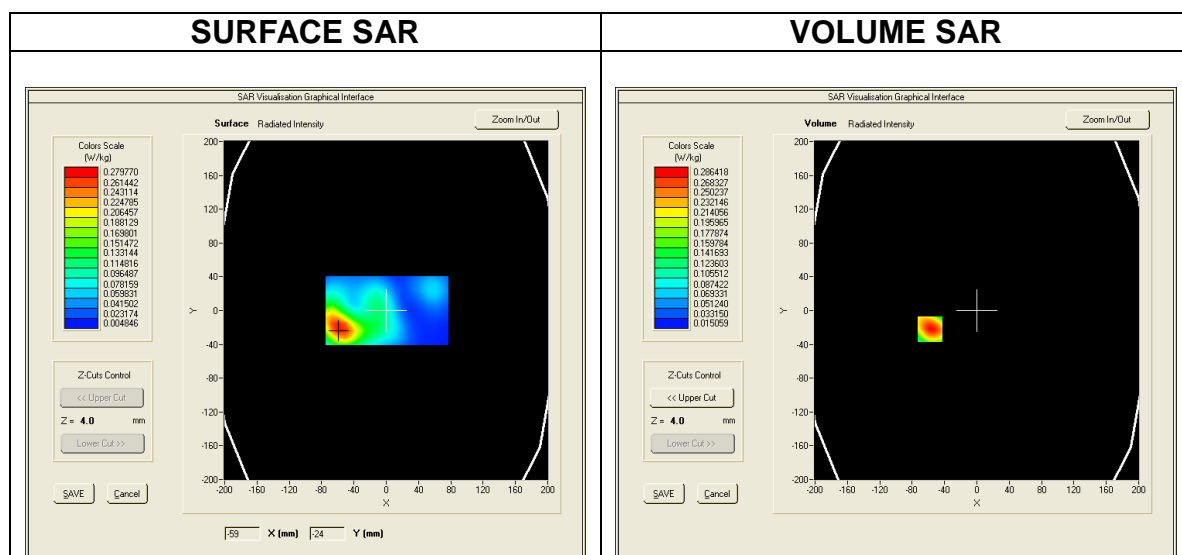
SAR 10g (W/Kg)	0.322408
SAR 1g (W/Kg)	0.553782



MEASUREMENT 26
Date of measurement: 2016/07/07

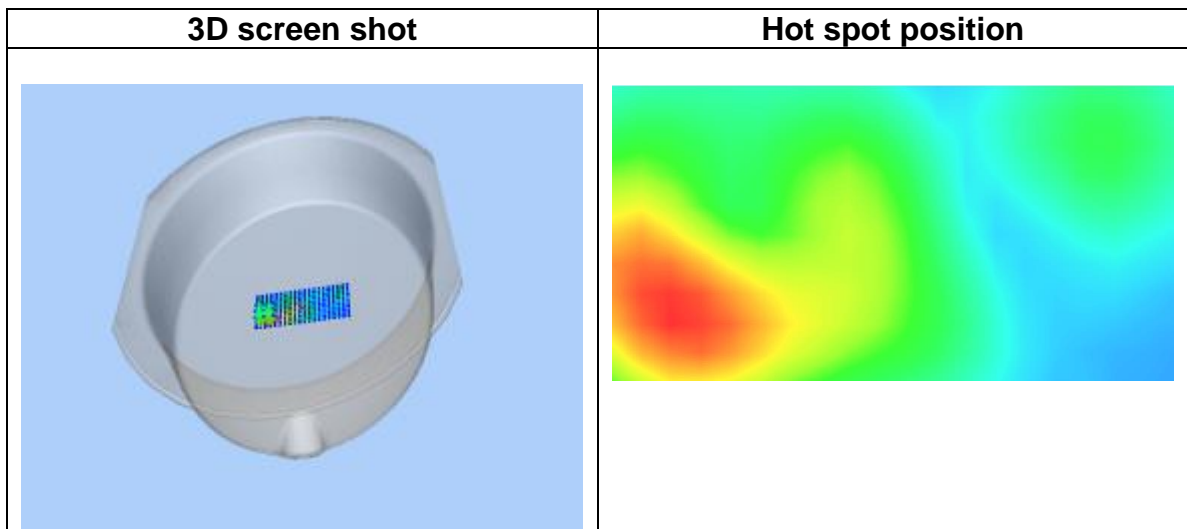
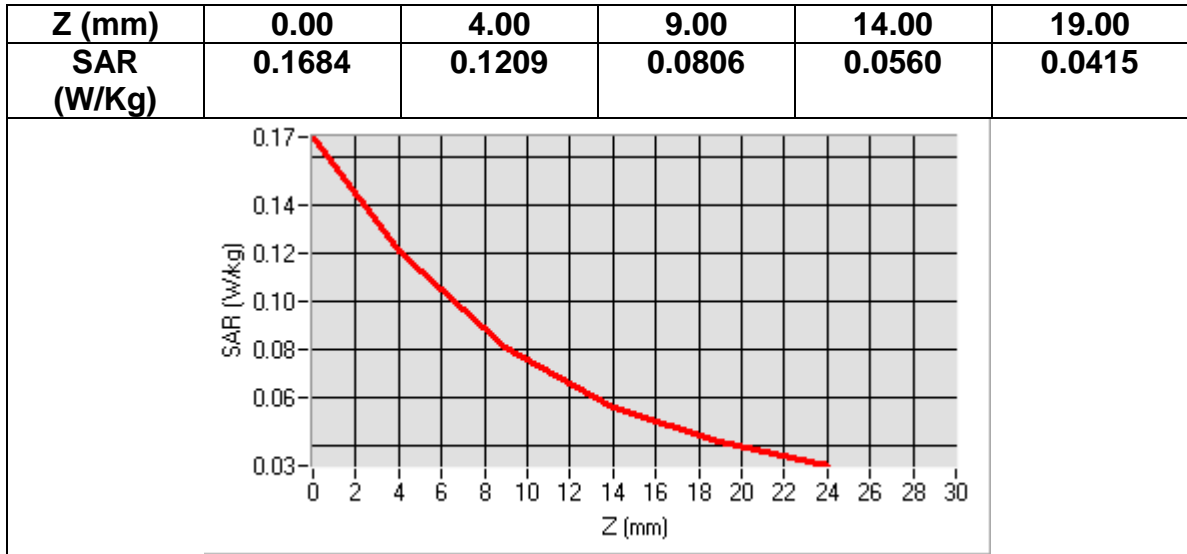
Area Scan	<u>dx=8mm dy=8mmh= 5.00 mm</u>
Zoom Scan	<u>7x7x7,dx=5mm dy=5mm dz=5mm, dx=8mm dy=8mm, h= 5.00 mm</u>
Phantom	<u>ELLI16</u>
Device Position	<u>Back</u>
Band	<u>GSM1900+EDGE(1up1down)</u>
Channels	<u>Middle</u>
Signal	<u>TDMA (Crest factor: 8.0)</u>

Frequency (MHz)	1880.000000
Relative permittivity (real part)	53.299999
Relative permittivity (imaginary part)	14.560000
Conductivity (S/m)	1.520711
Variation (%)	-2.880000



Maximum location: X=-59.00, Y=-24.00
SAR Peak: 0.19 W/kg

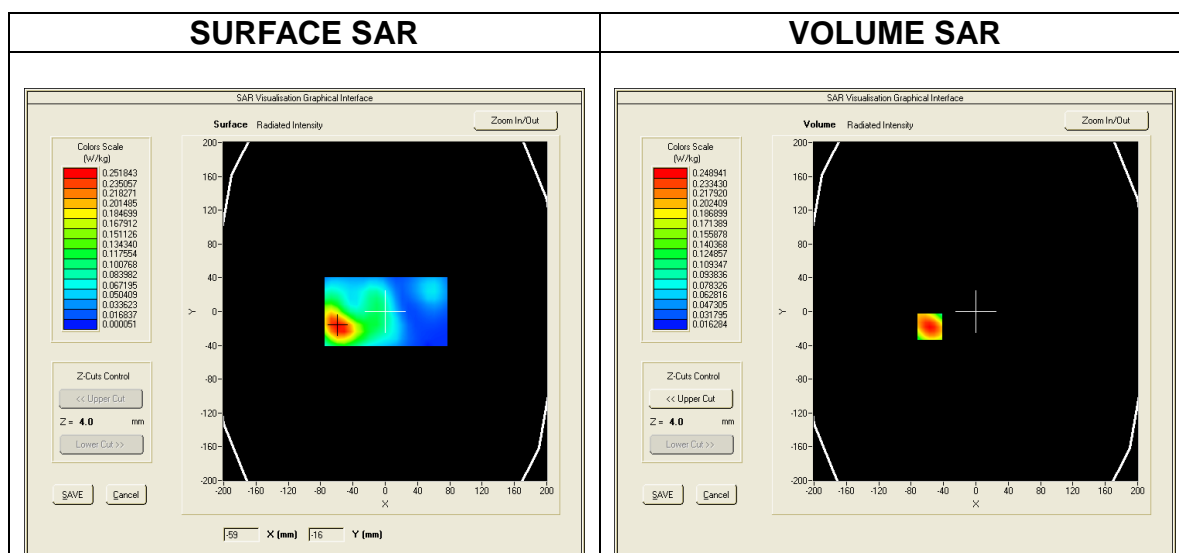
SAR 10g (W/Kg)	0.085339
SAR 1g (W/Kg)	0.131221



MEASUREMENT 27
Date of measurement: 2016/07/07

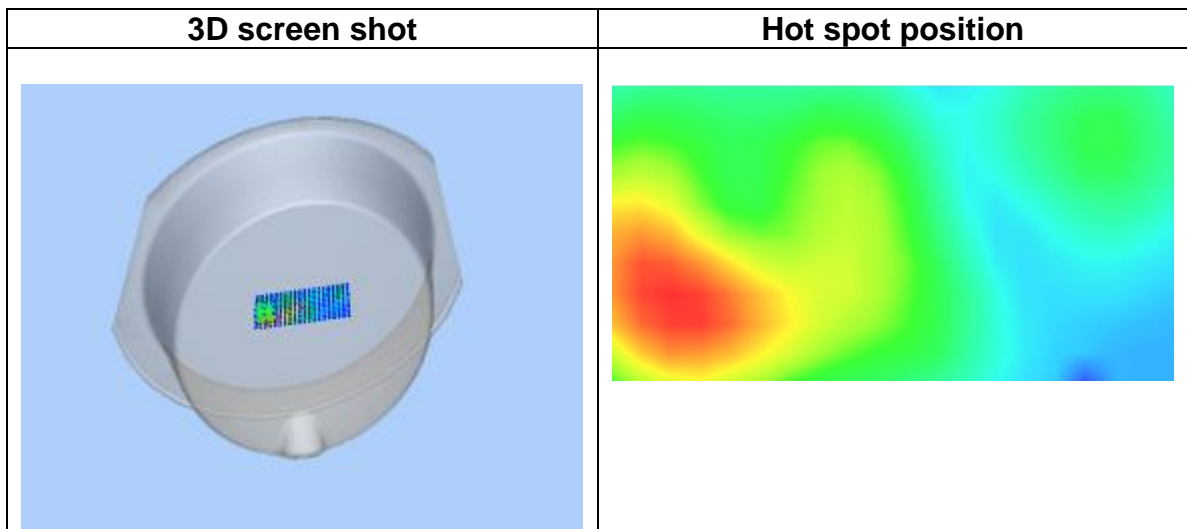
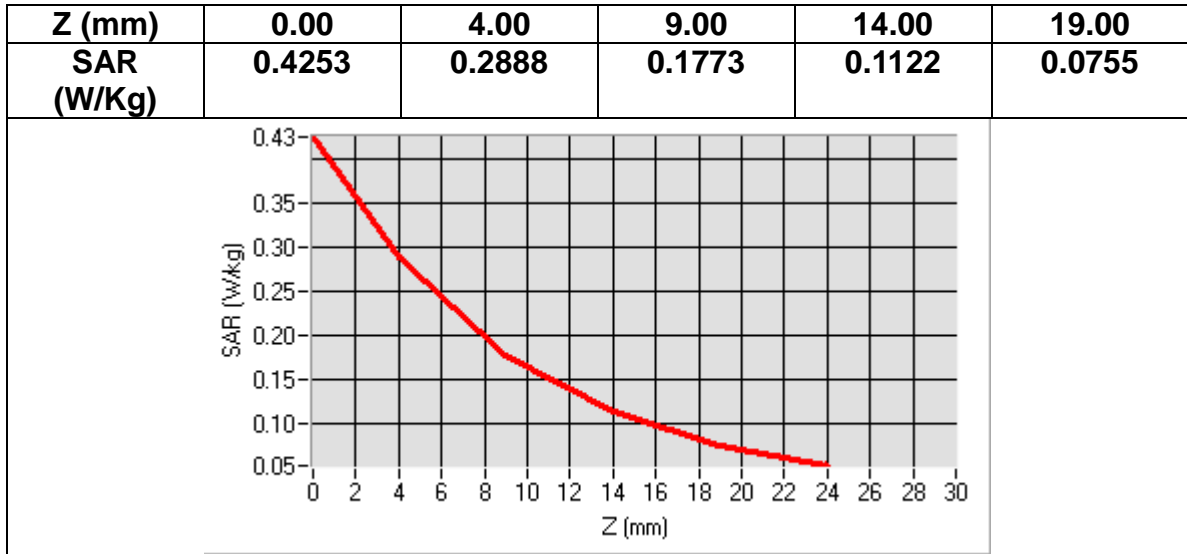
<u>Area Scan</u>	<u>dx=8mm dy=8mmh= 5.00 mm</u>
<u>Zoom Scan</u>	<u>7x7x7,dx=5mm dy=5mm dz=5mm, dx=8mm dy=8mm, h= 5.00 mm</u>
<u>Phantom</u>	<u>ELLI16</u>
<u>Device Position</u>	<u>Back</u>
<u>Band</u>	<u>GSM1900+VOICE</u>
<u>Channels</u>	<u>Middle</u>
<u>Signal</u>	<u>TDMA (Crest factor: 8.0)</u>

Frequency (MHz)	1880.000000
Relative permittivity (real part)	53.299999
Relative permittivity (imaginary part)	14.560000
Conductivity (S/m)	1.520711
Variation (%)	-0.660000



Maximum location: X=-60.00, Y=-23.00
SAR Peak: 0.48 W/kg

SAR 10g (W/Kg)	0.188489
SAR 1g (W/Kg)	0.311216

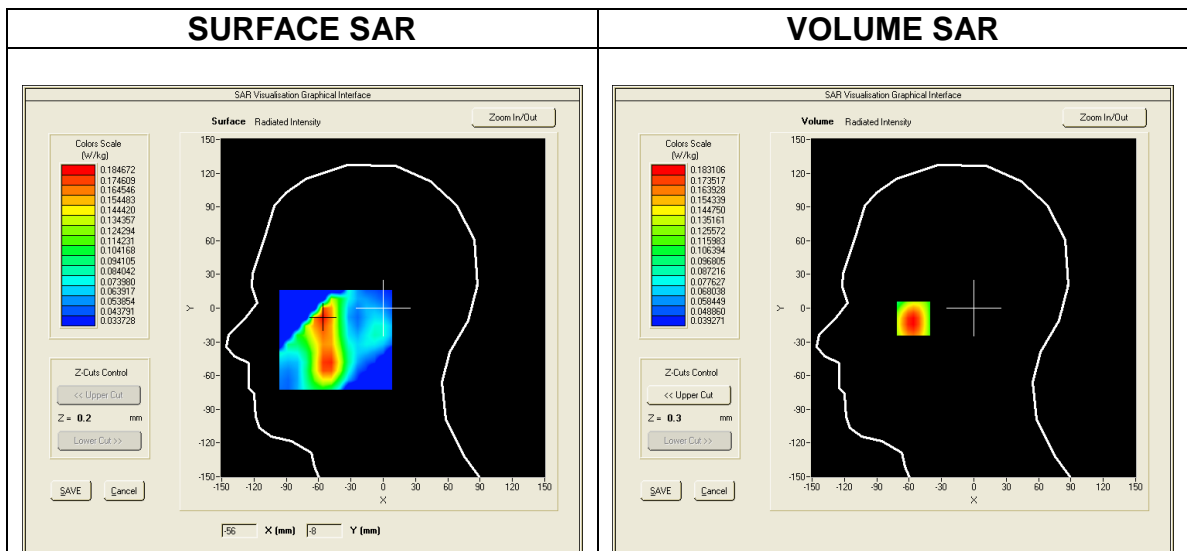


WCDMA BAND2

MEASUREMENT 1
 Date of measurement: 2016/07/02

Area Scan	<u>sam_direct_droit2_surf8mm.txt, h= 5.00 mm</u>
Zoom Scan	<u>7x7x7,dx=5mm dy=5mm dz=5mm, sam_direct_droit2_surf8mm.txt, h= 5.00 mm</u>
Phantom	<u>Right head</u>
Device Position	<u>Cheek</u>
Band	<u>Band2_WCDMA1900+HSPA</u>
Channels	<u>Middle</u>
Signal	<u>WCDMA (Crest factor: 1.0)</u>

Frequency (MHz)	1880.000000
Relative permittivity (real part)	40.000000
Relative permittivity (imaginary part)	13.408000
Conductivity (S/m)	1.400391
Variation (%)	-2.410000

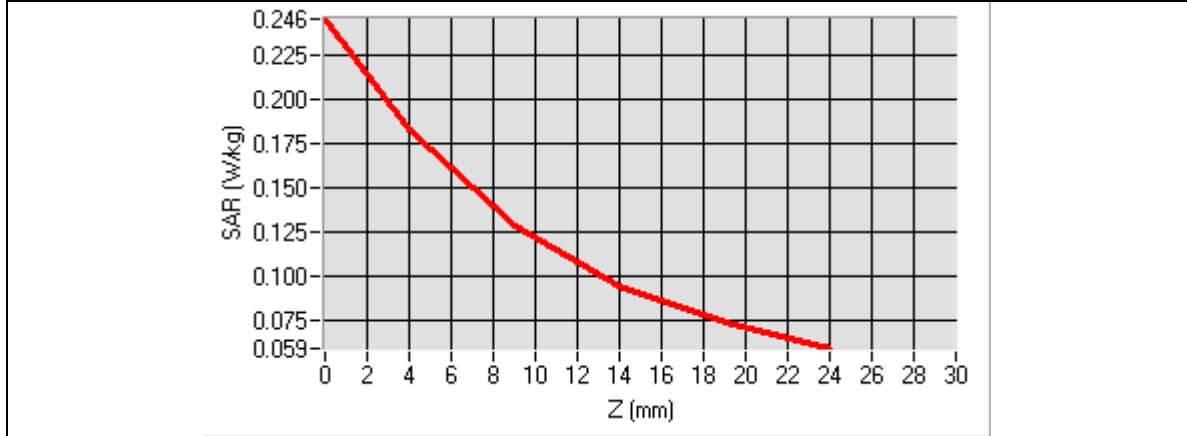


Maximum location: X=-56.00, Y=-8.00
SAR Peak: 0.25 W/kg

SAR 10g (W/Kg)	0.119720
-----------------------	----------

SAR 1g (W/Kg)	0.174356
----------------------	----------

Z (mm)	0.00	4.00	9.00	14.00	19.00
SAR (W/Kg)	0.2459	0.1829	0.1282	0.0940	0.0732

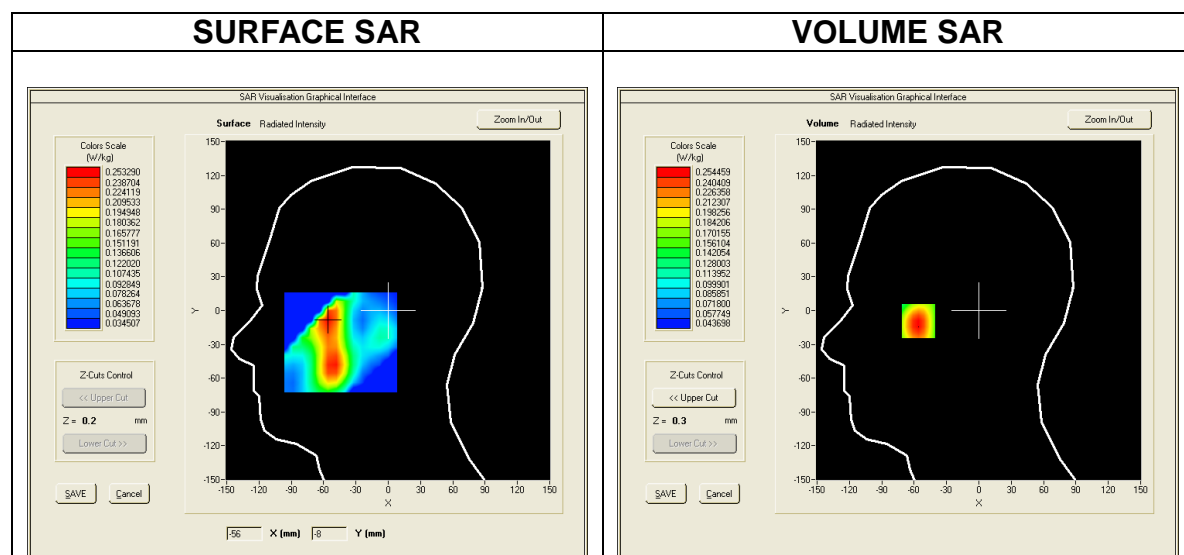


3D screen shot	Hot spot position

MEASUREMENT 2
Date of measurement: 2016/07/02

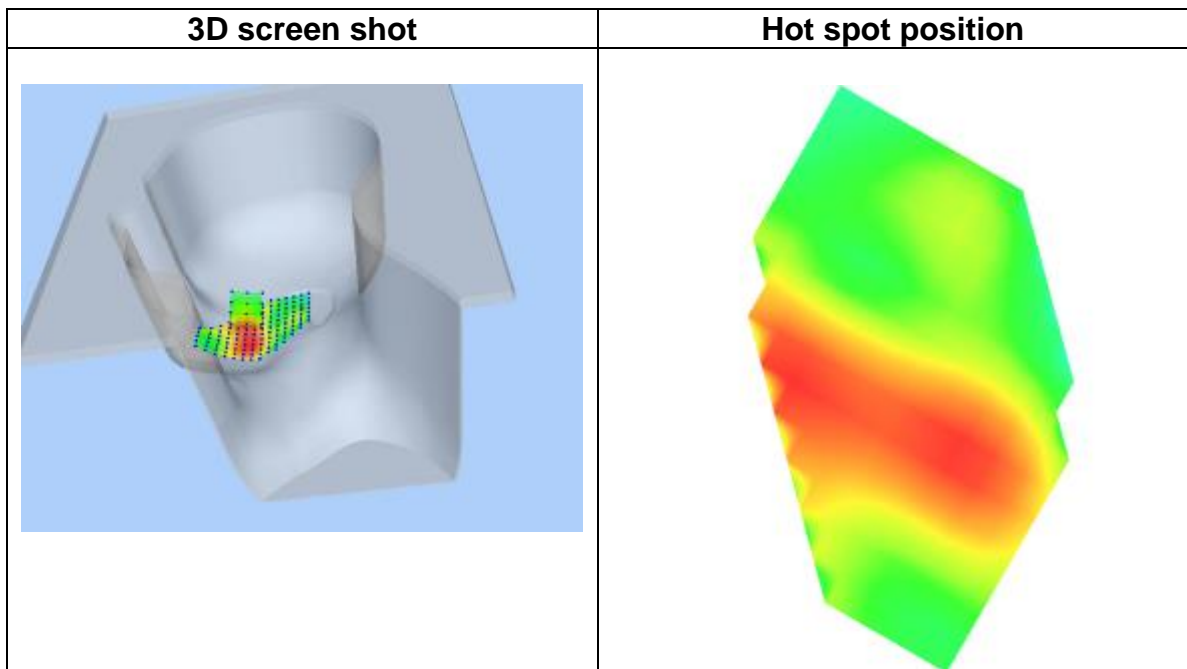
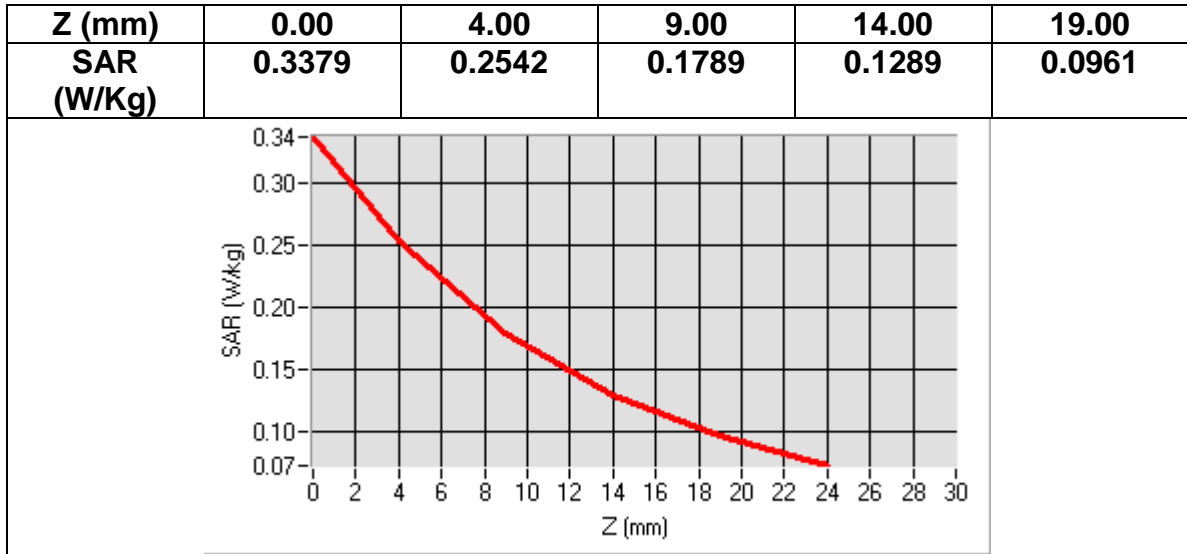
Area Scan	<u>sam_direct_droit2_surf8mm.txt, h= 5.00 mm</u>
Zoom Scan	<u>7x7x7,dx=5mm dy=5mm dz=5mm, sam_direct_droit2_surf8mm.txt, h= 5.00 mm</u>
Phantom	<u>Right head</u>
Device Position	<u>Cheek</u>
Band	<u>Band2 WCDMA1900+RMC</u>
Channels	<u>Middle</u>
Signal	<u>WCDMA (Crest factor: 1.0)</u>

Frequency (MHz)	1880.000000
Relative permittivity (real part)	40.000000
Relative permittivity (imaginary part)	13.408000
Conductivity (S/m)	1.400391
Variation (%)	-1.110000



Maximum location: X=-56.00, Y=-8.00
SAR Peak: 0.34 W/kg

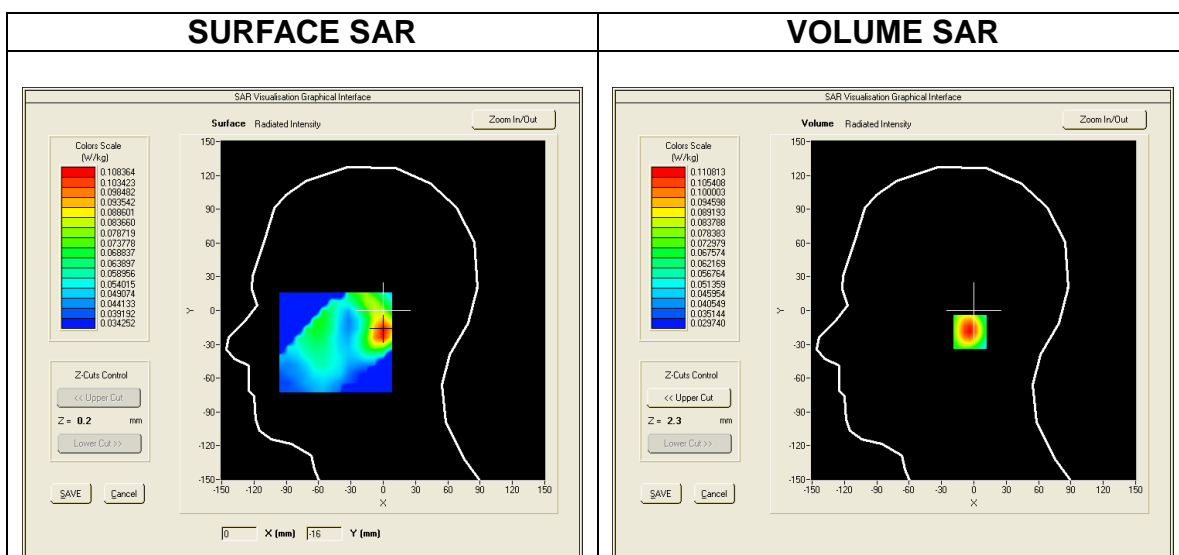
SAR 10g (W/Kg)	0.161930
SAR 1g (W/Kg)	0.241474



MEASUREMENT 3
Date of measurement: 2016/07/02

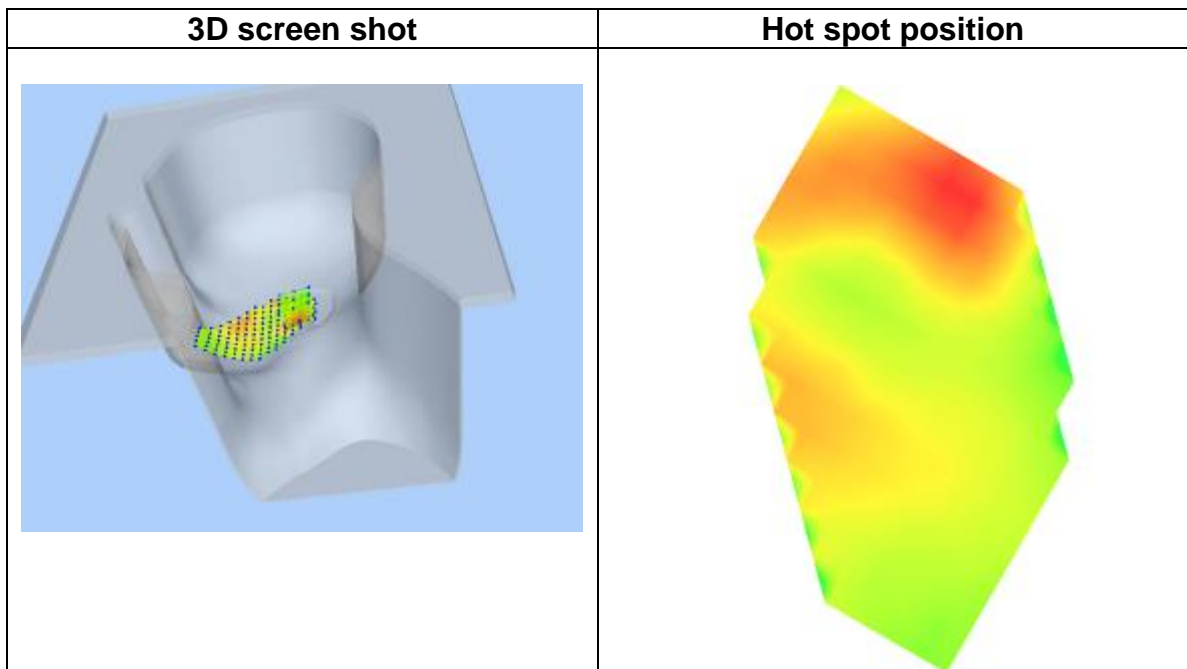
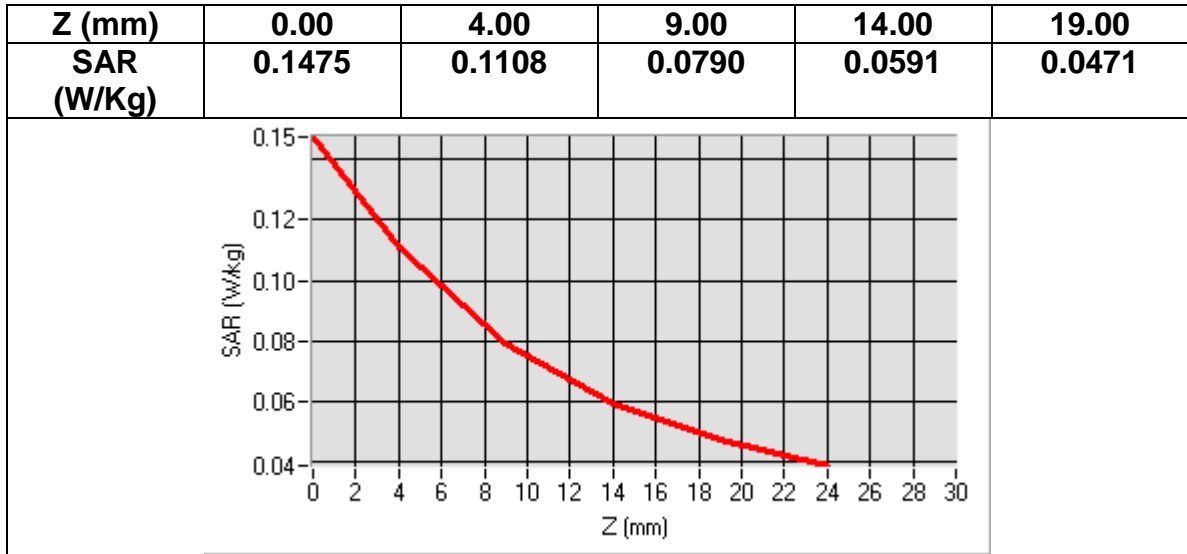
Area Scan	<u>sam_direct_droit2_surf8mm.txt, h= 5.00 mm</u>
Zoom Scan	<u>7x7x7,dx=5mm dy=5mm dz=5mm, sam_direct_droit2_surf8mm.txt, h= 5.00 mm</u>
Phantom	<u>Right head</u>
Device Position	<u>Tilt</u>
Band	<u>Band2 WCDMA1900+HSPA</u>
Channels	<u>Middle</u>
Signal	<u>WCDMA (Crest factor: 1.0)</u>

Frequency (MHz)	1880.000000
Relative permittivity (real part)	40.000000
Relative permittivity (imaginary part)	13.408000
Conductivity (S/m)	1.400391
Variation (%)	-3.130000



Maximum location: X=0.00, Y=-19.00
SAR Peak: 0.15 W/kg

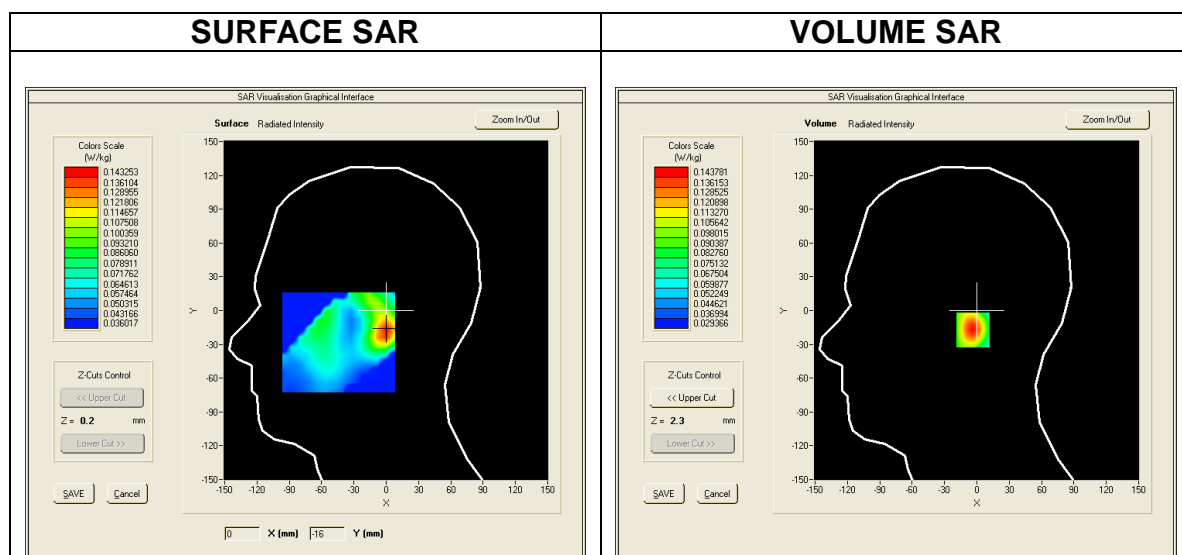
SAR 10g (W/Kg)	0.072205
SAR 1g (W/Kg)	0.104297



MEASUREMENT 4
Date of measurement: 2016/07/02

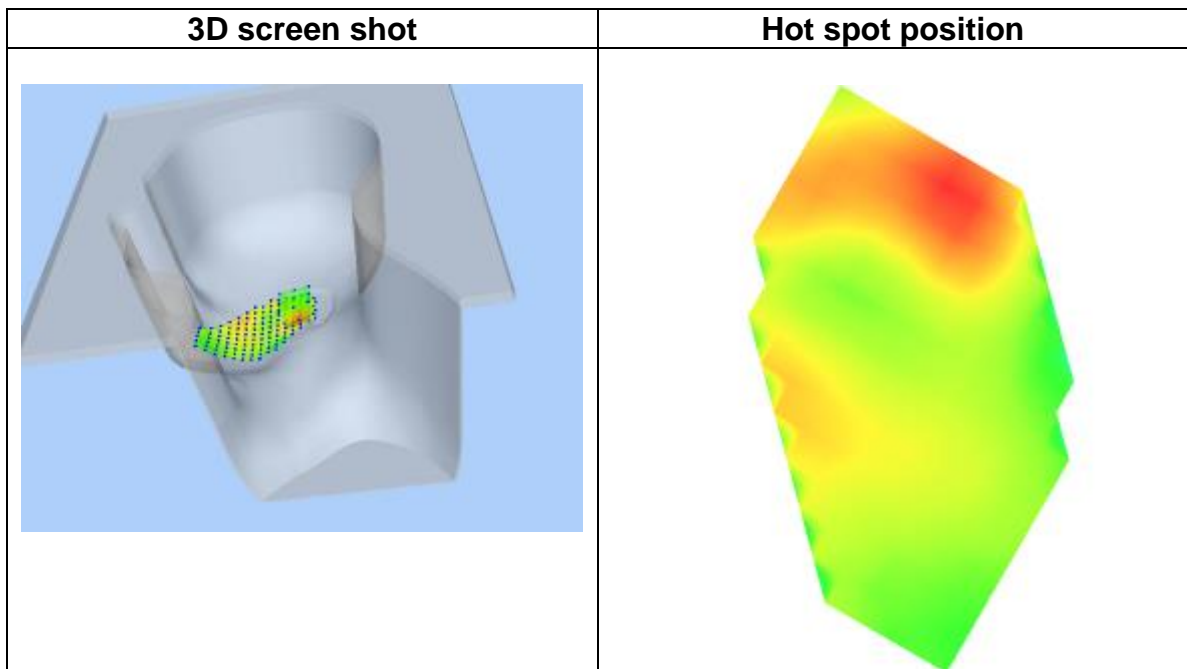
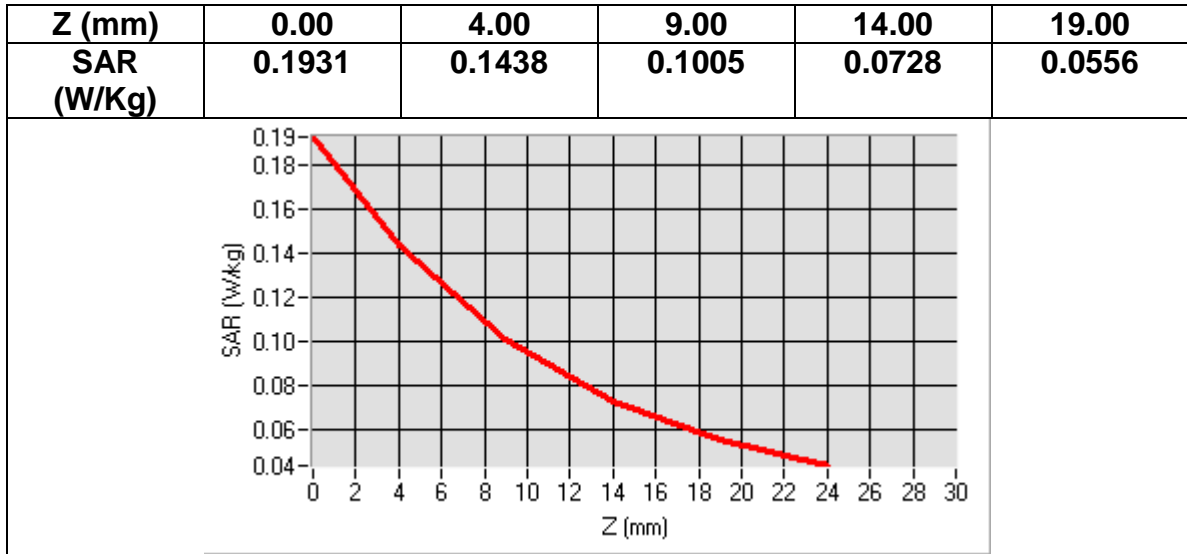
Area Scan	<u>sam_direct_droit2_surf8mm.txt, h= 5.00 mm</u>
ZoomScan	<u>7x7x7,dx=5mm dy=5mm dz=5mm, sam_direct_droit2_surf8mm.txt, h= 5.00 mm</u>
Phantom	<u>Right head</u>
Device Position	<u>Tilt</u>
Band	<u>Band2 WCDMA1900+RMC</u>
Channels	<u>Middle</u>
Signal	<u>WCDMA (Crest factor: 1.0)</u>

Frequency (MHz)	1880.000000
Relative permittivity (real part)	40.000000
Relative permittivity (imaginary part)	13.408000
Conductivity (S/m)	1.400391
Variation (%)	-1.130000



Maximum location: X=0.00, Y=-17.00
SAR Peak: 0.19 W/kg

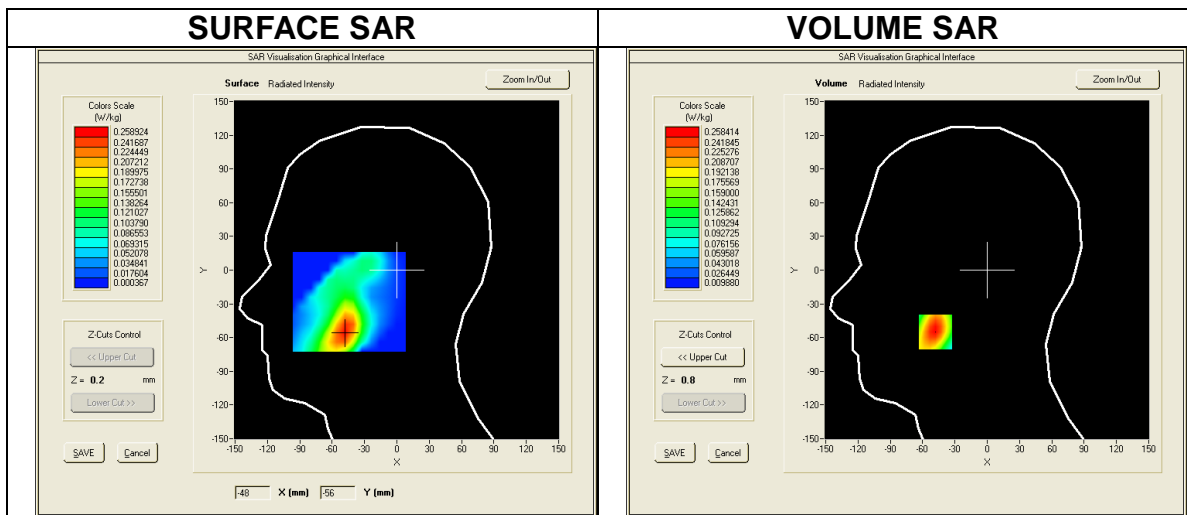
SAR 10g (W/Kg)	0.089394
SAR 1g (W/Kg)	0.134260



MEASUREMENT 5
Date of measurement: 2016/07/02

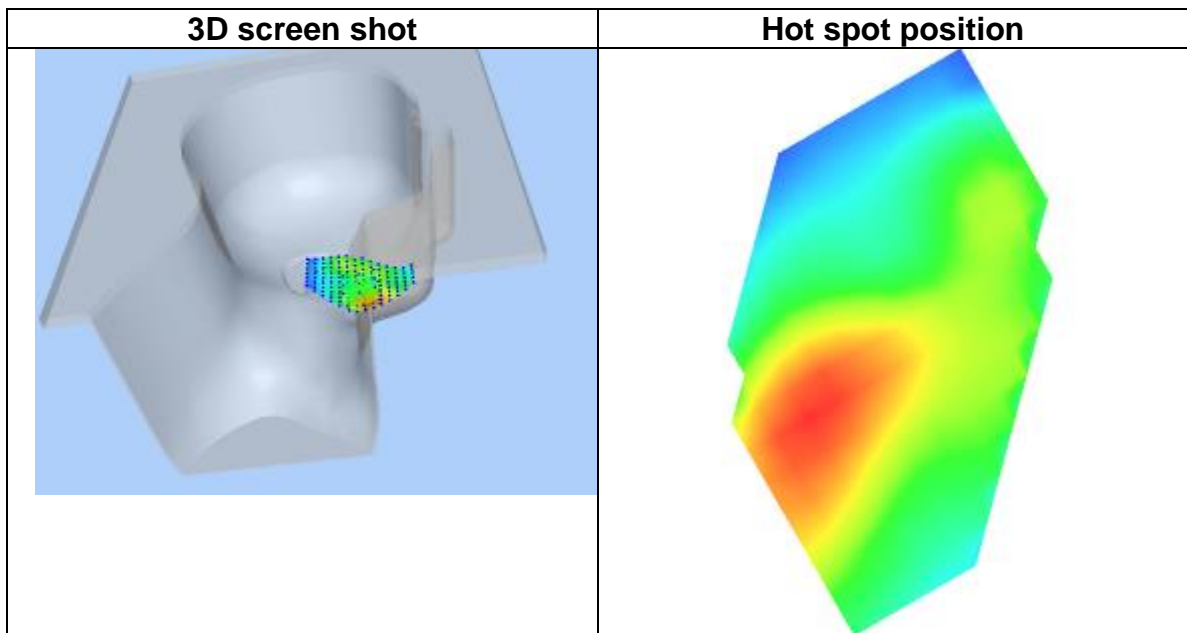
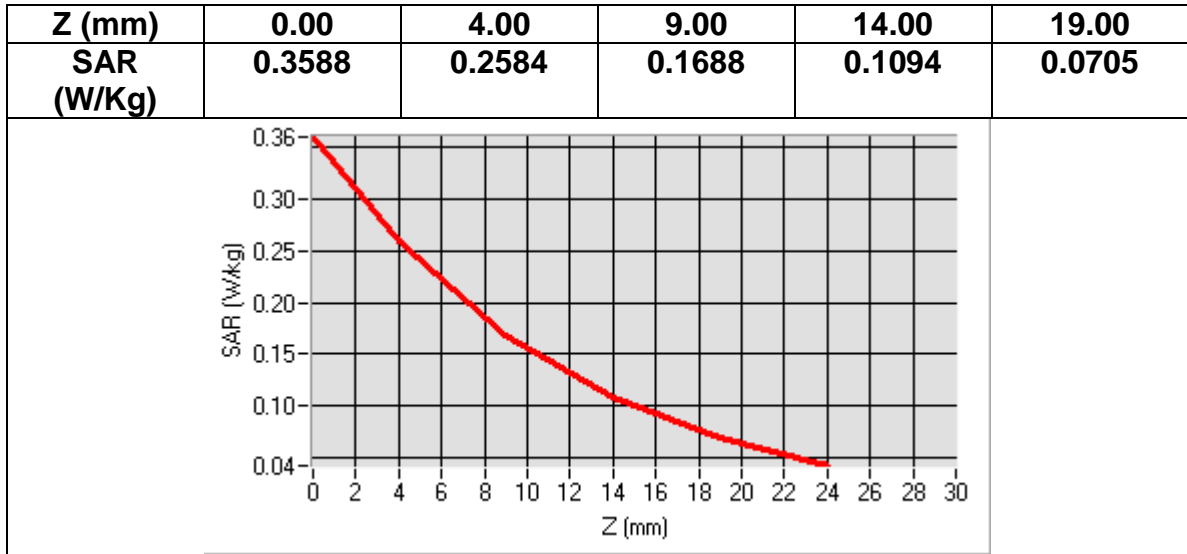
Area Scan	<u>sam_direct_droit2_surf8mm.txt, h= 5.00 mm</u>
Zoom Scan	<u>7x7x7,dx=5mm dy=5mm dz=5mm, sam_direct_droit2_surf8mm.txt, h= 5.00 mm</u>
Phantom	<u>Left head</u>
Device Position	<u>Cheek</u>
Band	<u>Band2 WCDMA1900+HSPA</u>
Channels	<u>Middle</u>
Signal	<u>WCDMA (Crest factor: 1.0)</u>

Frequency (MHz)	1880.000000
Relative permittivity (real part)	40.000000
Relative permittivity (imaginary part)	13.408000
Conductivity (S/m)	1.400391
Variation (%)	0.510000



Maximum location: X=-48.00, Y=-55.00
SAR Peak: 0.36 W/kg

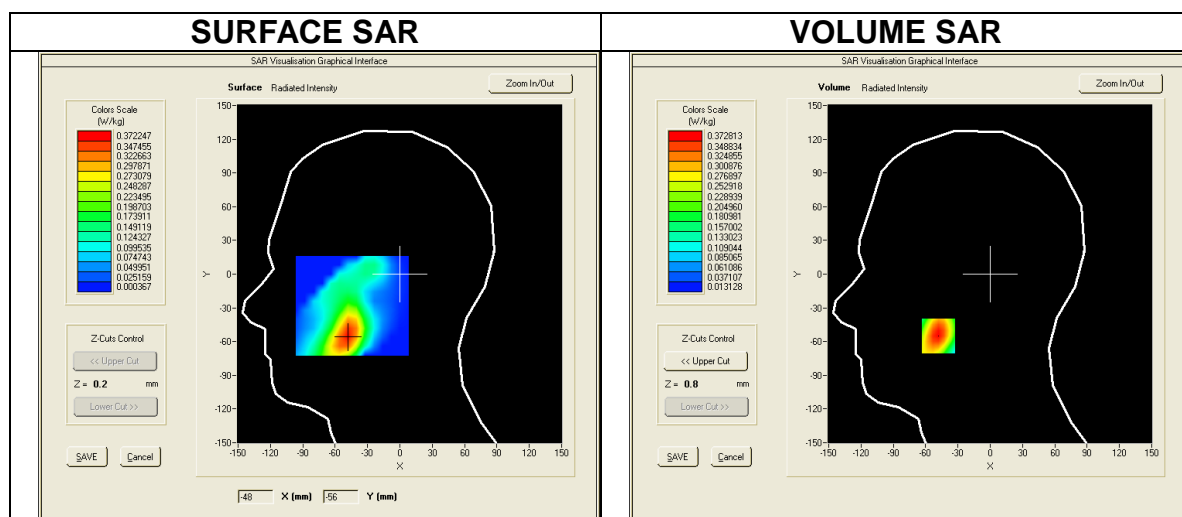
SAR 10g (W/Kg)	0.146512
SAR 1g (W/Kg)	0.241490



MEASUREMENT 6
Date of measurement: 2016/07/02

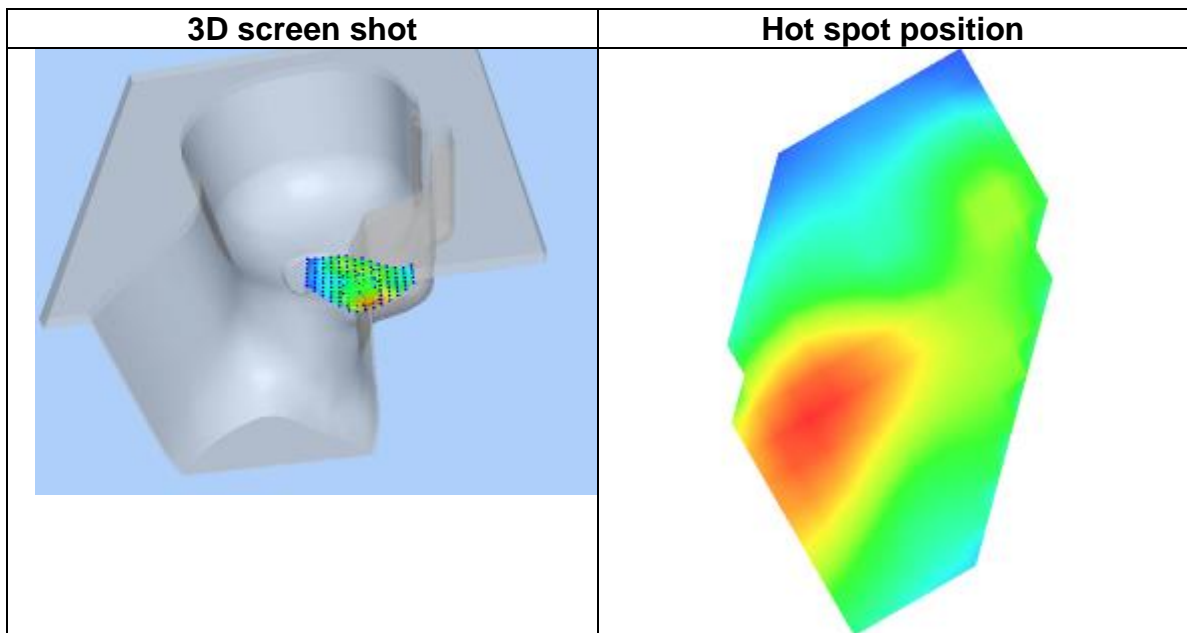
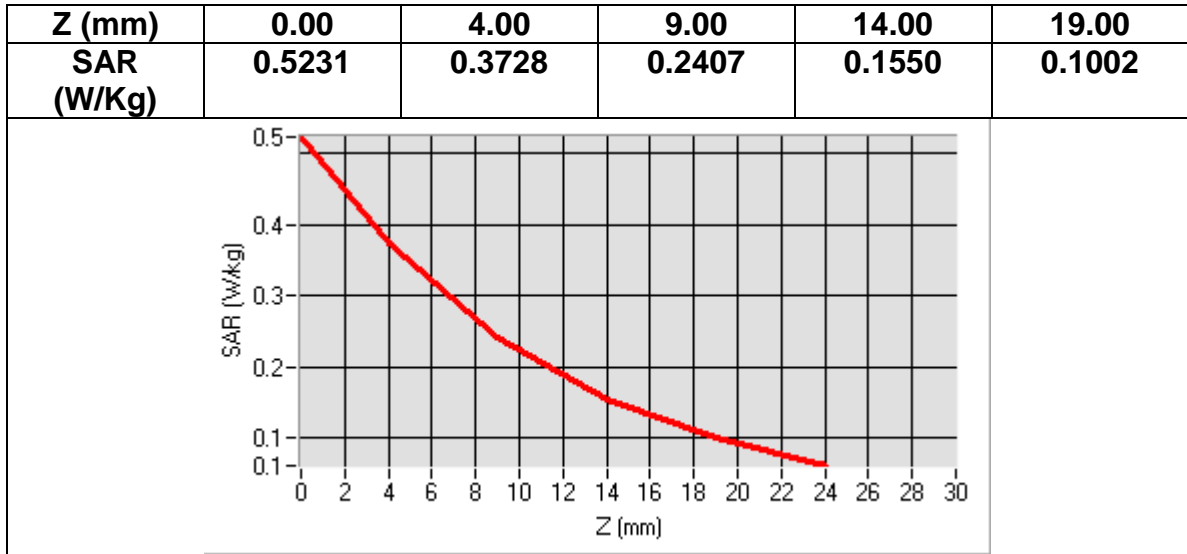
Area Scan	<u>sam_direct_droit2_surf8mm.txt, h= 5.00 mm</u>
Zoom Scan	<u>7x7x7,dx=5mm dy=5mm dz=5mm, sam_direct_droit2_surf8mm.txt, h= 5.00 mm</u>
Phantom	<u>Left head</u>
Device Position	<u>Cheek</u>
Band	<u>Band2 WCDMA1900+RMC</u>
Channels	<u>Middle</u>
Signal	<u>WCDMA (Crest factor: 1.0)</u>

Frequency (MHz)	1880.000000
Relative permittivity (real part)	40.000000
Relative permittivity (imaginary part)	13.408000
Conductivity (S/m)	1.400391
Variation (%)	1.370000



Maximum location: X=-48.00, Y=-55.00
SAR Peak: 0.52 W/kg

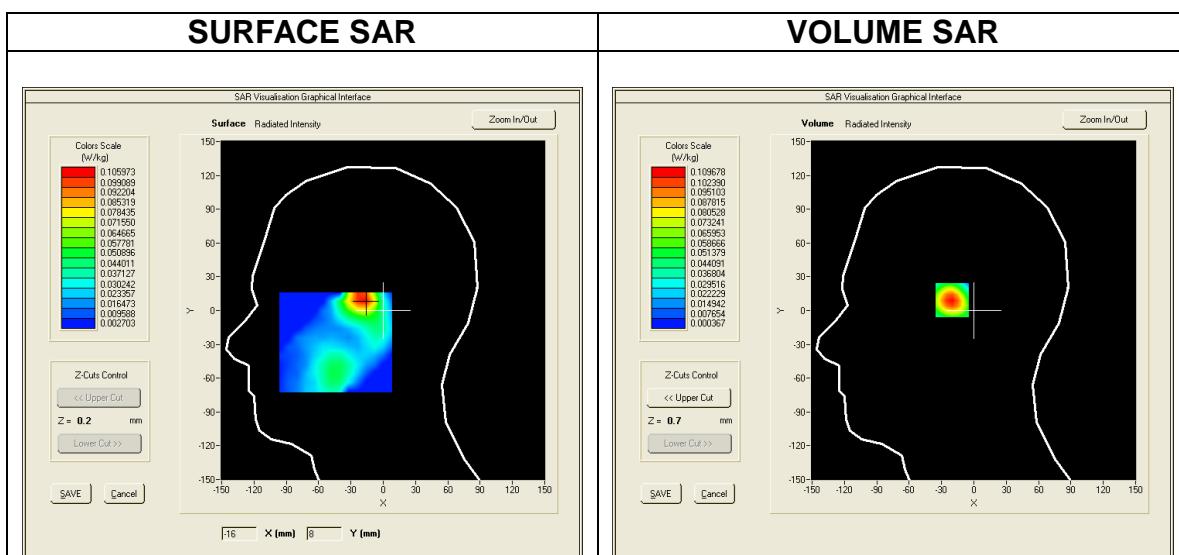
SAR 10g (W/Kg)	0.209524
SAR 1g (W/Kg)	0.347705



MEASUREMENT 7
Date of measurement: 2016/07/02

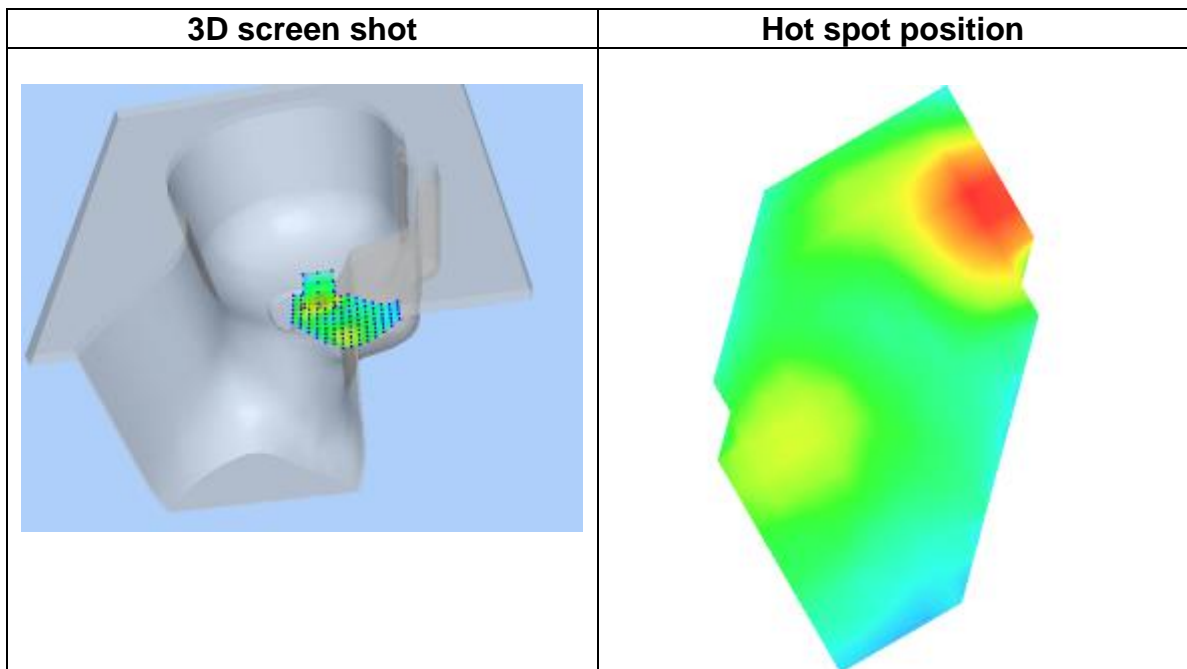
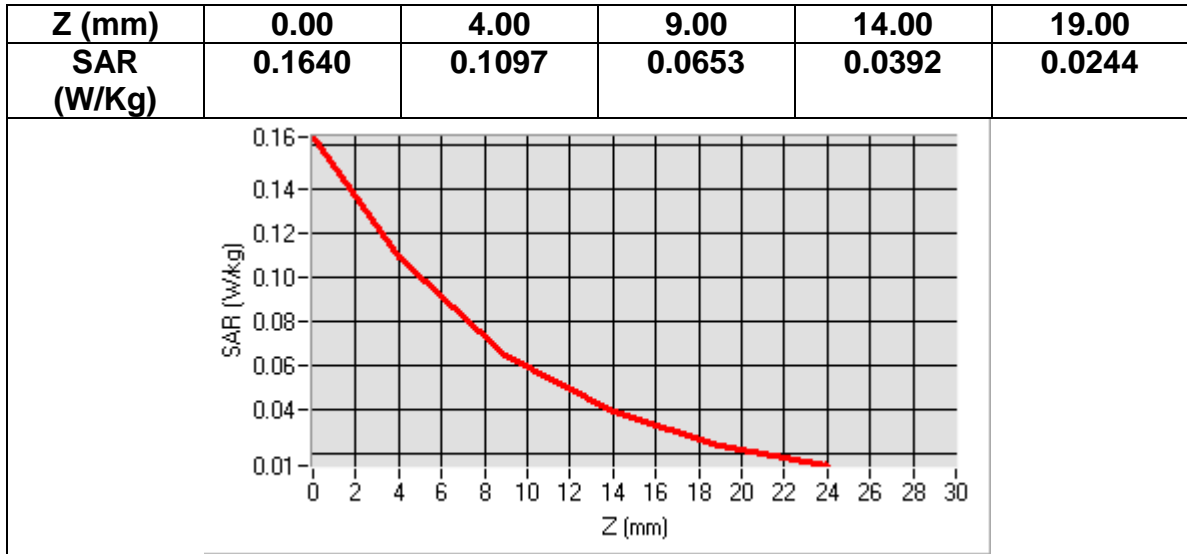
Area Scan	<u>sam_direct_droit2_surf8mm.txt, h= 5.00 mm</u>
Zoom Scan	<u>7x7x7,dx=5mm dy=5mm dz=5mm, sam_direct_droit2_surf8mm.txt, h= 5.00 mm</u>
Phantom	<u>Left head</u>
Device Position	<u>Tilt</u>
Band	<u>Band2 WCDMA1900+HSPA</u>
Channels	<u>Middle</u>
Signal	<u>WCDMA (Crest factor: 1.0)</u>

Frequency (MHz)	1880.000000
Relative permittivity (real part)	40.000000
Relative permittivity (imaginary part)	13.408000
Conductivity (S/m)	1.400391
Variation (%)	-3.150000



Maximum location: X=-19.00, Y=10.00
SAR Peak: 0.16 W/kg

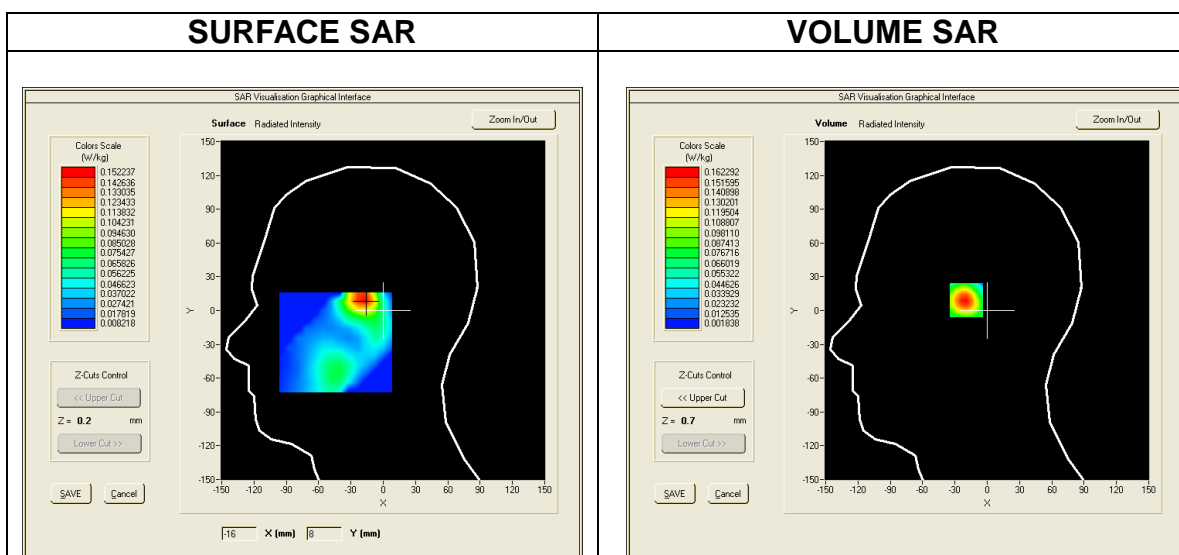
SAR 10g (W/Kg)	0.054735
SAR 1g (W/Kg)	0.100154



MEASUREMENT 8
Date of measurement: 2016/07/02

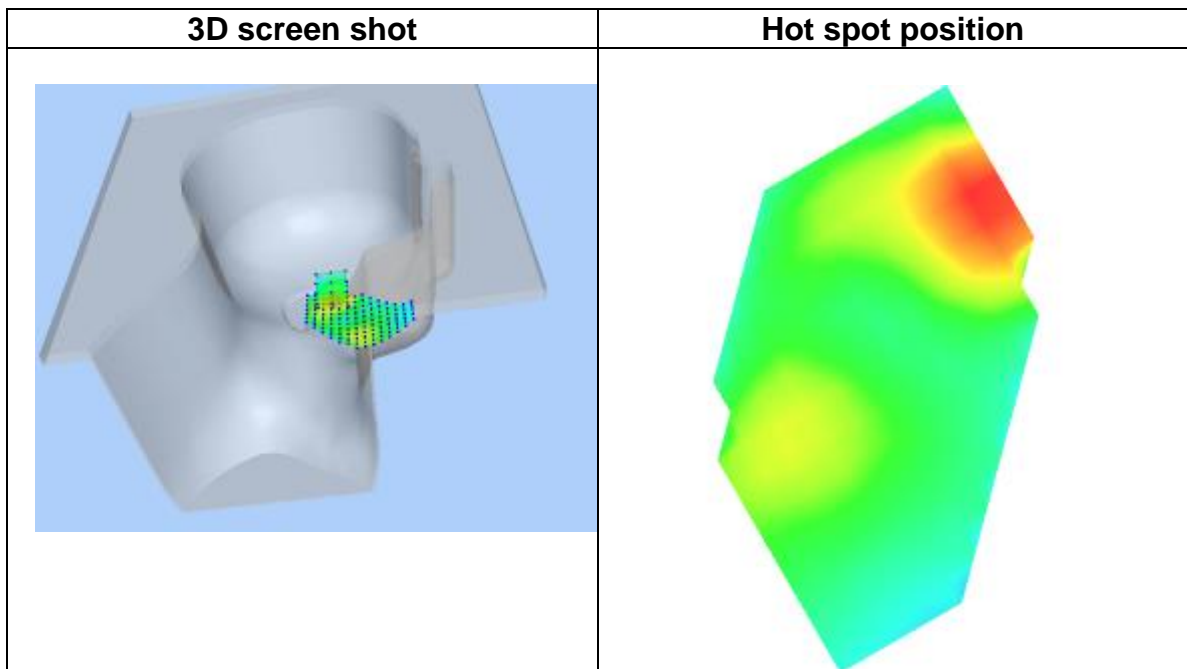
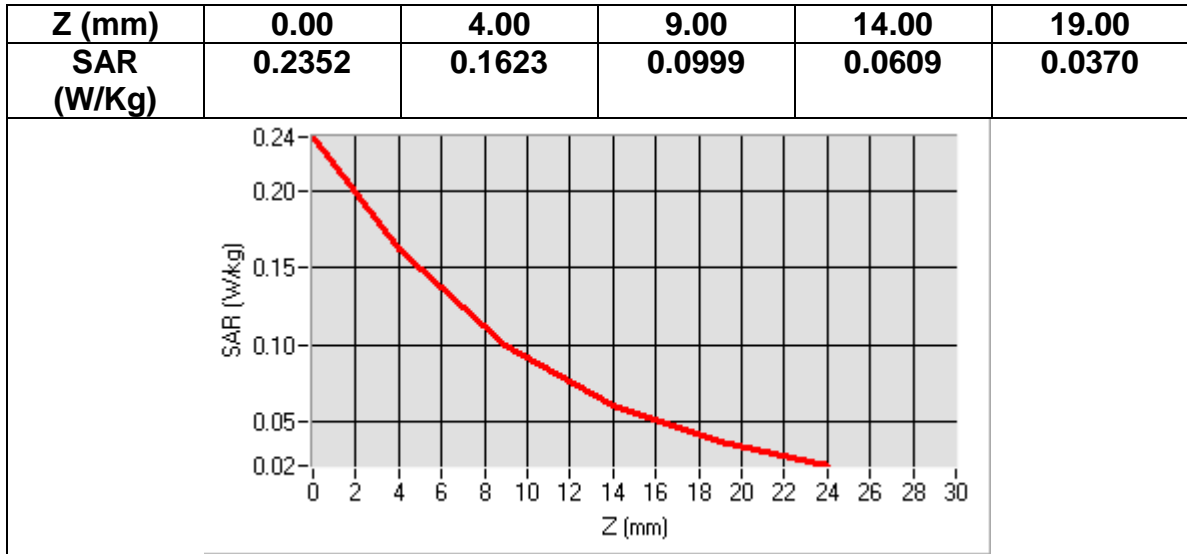
Area Scan	<u>sam_direct_droit2_surf8mm.txt, h= 5.00 mm</u>
Zoom Scan	<u>7x7x7,dx=5mm dy=5mm dz=5mm, sam_direct_droit2_surf8mm.txt, h= 5.00 mm</u>
Phantom	<u>Left head</u>
Device Position	<u>Tilt</u>
Band	<u>Band2 WCDMA1900+RMC</u>
Channels	<u>Middle</u>
Signal	<u>WCDMA (Crest factor: 1.0)</u>

Frequency (MHz)	1880.000000
Relative permittivity (real part)	40.000000
Relative permittivity (imaginary part)	13.408000
Conductivity (S/m)	1.400391
Variation (%)	-0.180000



Maximum location: X=-18.00, Y=10.00
SAR Peak: 0.24 W/kg

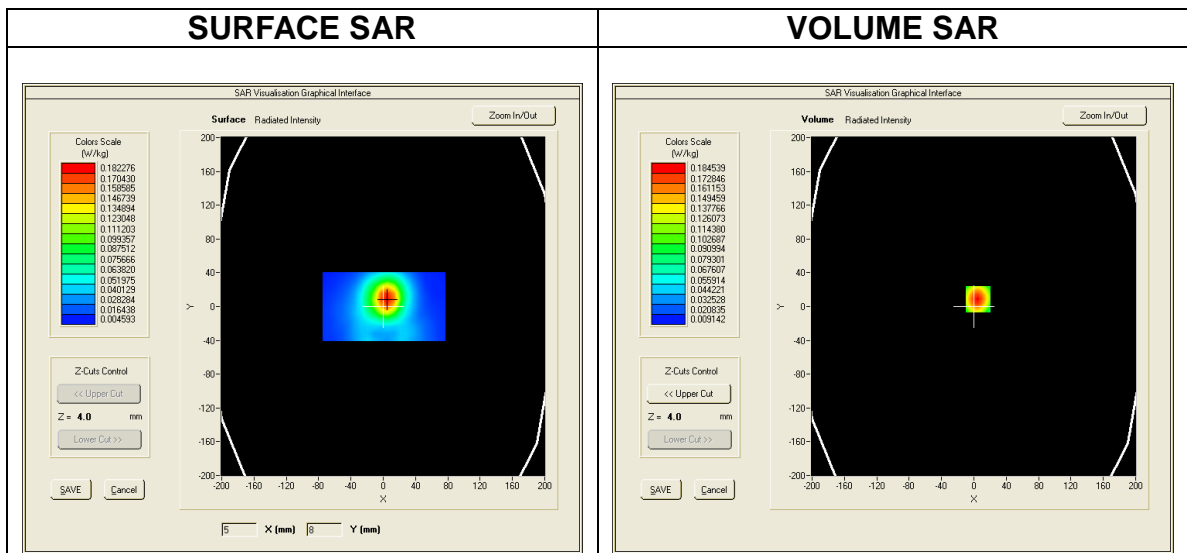
SAR 10g (W/Kg)	0.082648
SAR 1g (W/Kg)	0.148081



MEASUREMENT 9
 Date of measurement: 2016/07/07

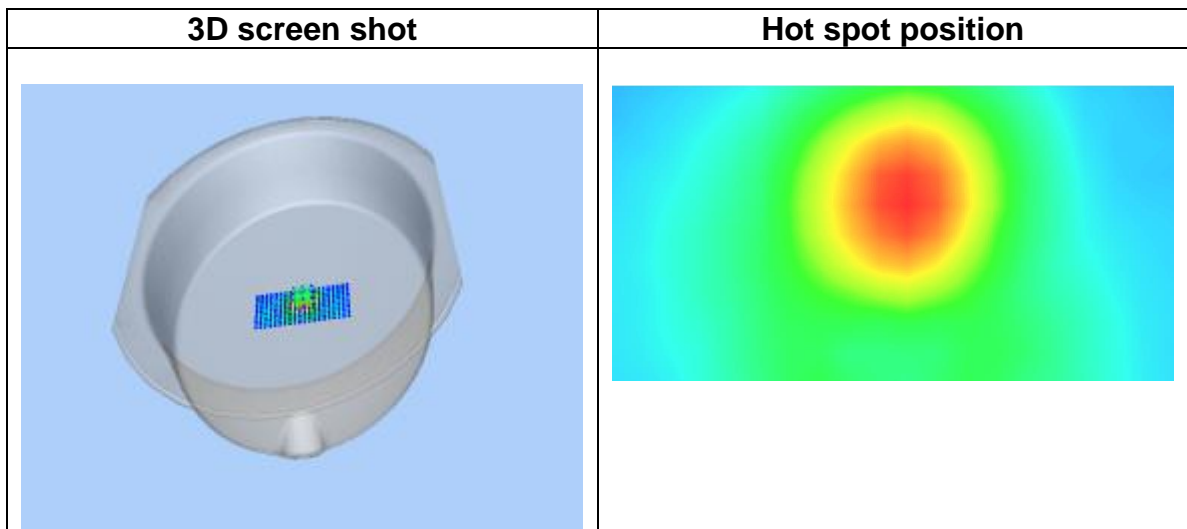
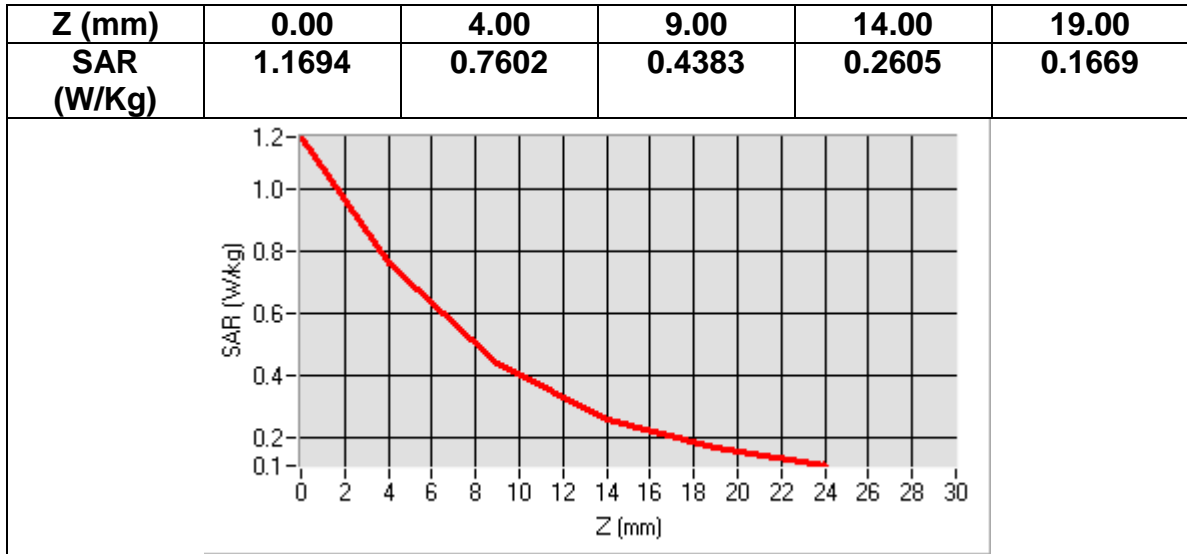
Area Scan	<u>dx=8mm dy=8mmh= 5.00 mm</u>
Zoom Scan	<u>7x7x7,dx=5mm dy=5mm dz=5mm, dx=8mm dy=8mm, h= 5.00 mm</u>
Phantom	<u>ELLI16</u>
Device Position	<u>Back</u>
Band	<u>Band2 WCDMA1900+HSPA</u>
Channels	<u>Middle</u>
Signal	<u>WCDMA (Crest factor: 1.0)</u>

Frequency (MHz)	1880.000000
Relative permittivity (real part)	51.181801
Relative permittivity (imaginary part)	14.969100
Conductivity (S/m)	1.563439
Variation (%)	0.820000



Maximum location: X=-52.00, Y=1.00
SAR Peak: 1.31 W/kg

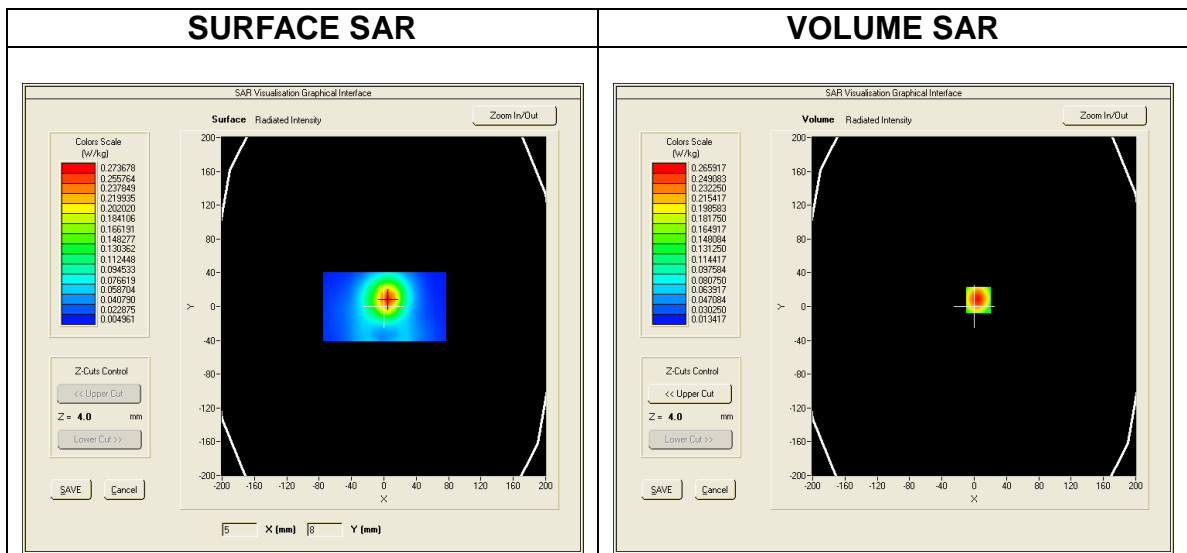
SAR 10g (W/Kg)	0.466109
SAR 1g (W/Kg)	0.814674



MEASUREMENT 10
 Date of measurement: 2016/07/07

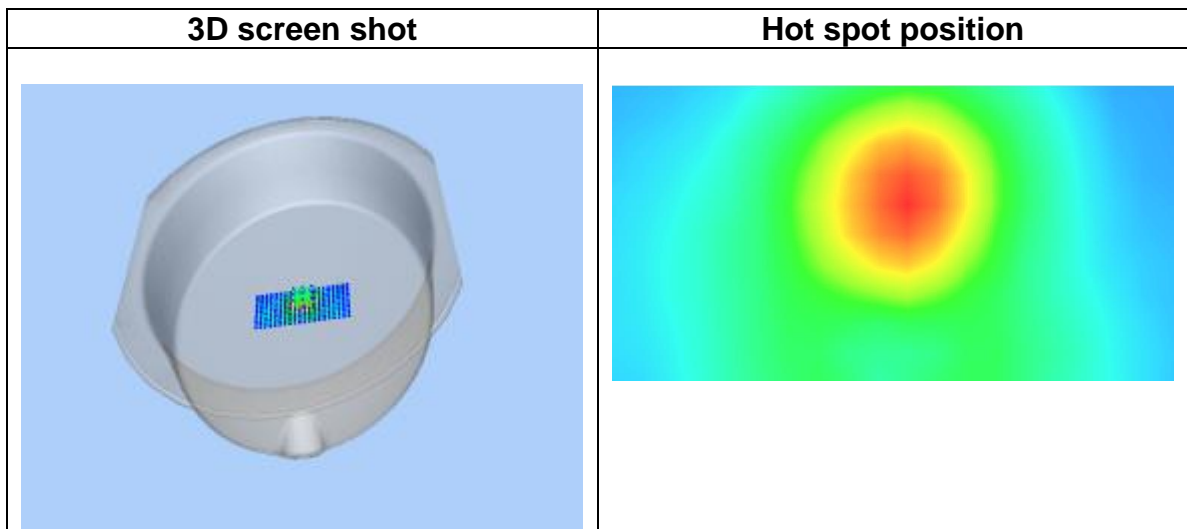
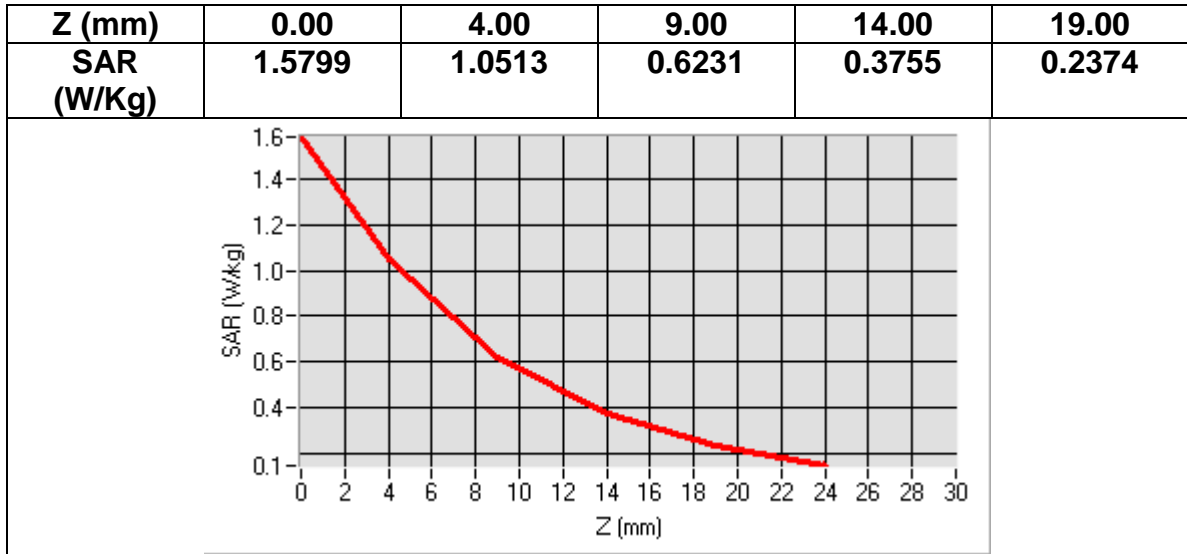
Area Scan	<u>dx=8mm dy=8mmh= 5.00 mm</u>
Zoom Scan	<u>7x7x7,dx=5mm dy=5mm dz=5mm, dx=8mm dy=8mm, h= 5.00 mm</u>
Phantom	<u>ELL16</u>
Device Position	<u>Back</u>
Band	<u>Band2 WCDMA1900+RMC</u>
Channels	<u>Middle</u>
Signal	<u>WCDMA (Crest factor: 1.0)</u>

Frequency (MHz)	1880.000000
Relative permittivity (real part)	51.181801
Relative permittivity (imaginary part)	14.969100
Conductivity (S/m)	1.563439
Variation (%)	1.600000



Maximum location: X=-52.00, Y=2.00
SAR Peak: 1.77 W/kg

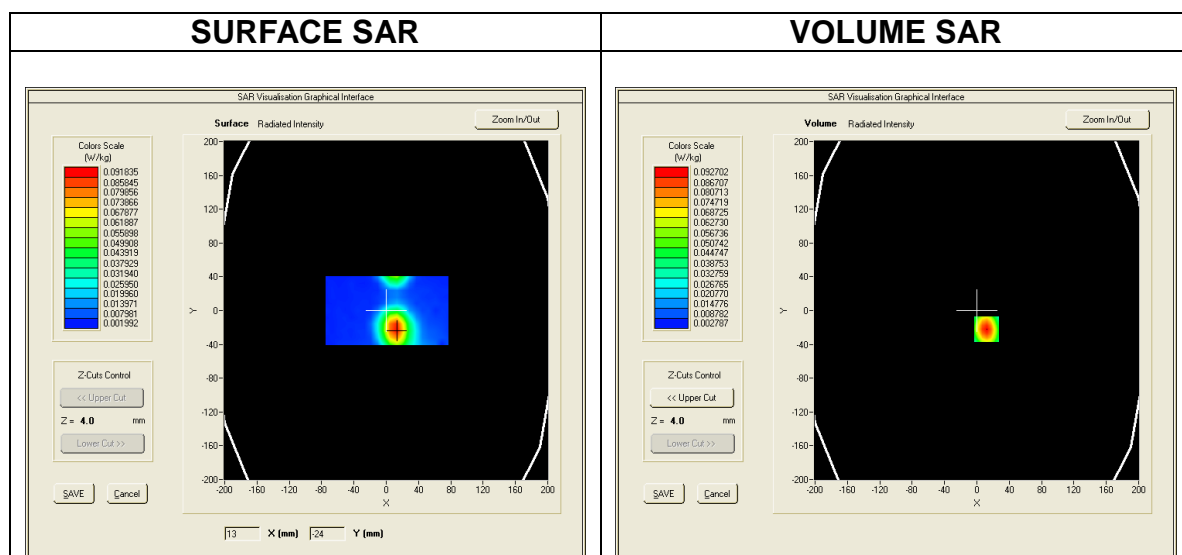
SAR 10g (W/Kg)	0.647945
SAR 1g (W/Kg)	1.123033



MEASUREMENT 11
Date of measurement: 2016/07/07

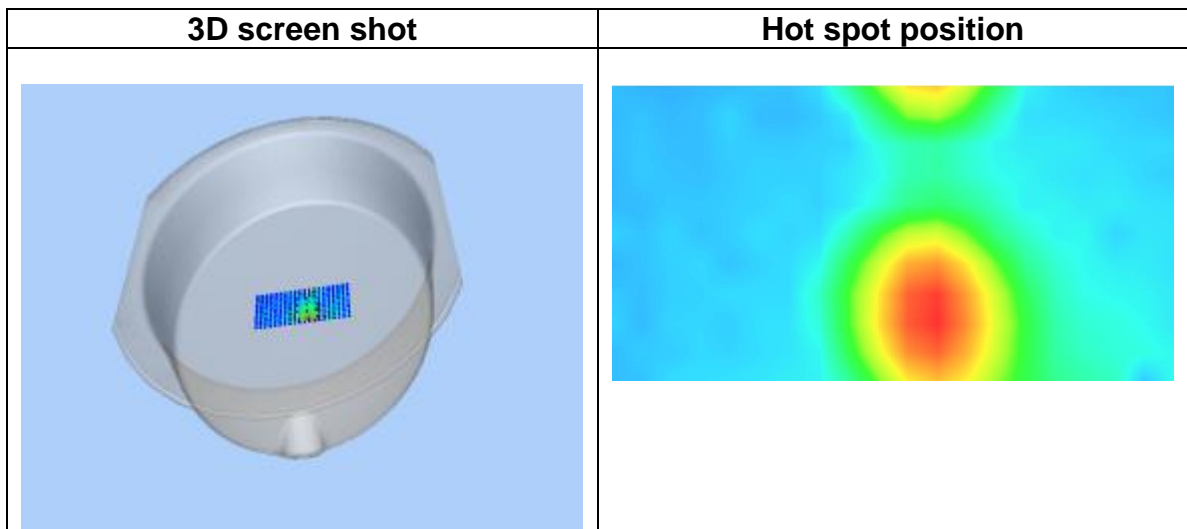
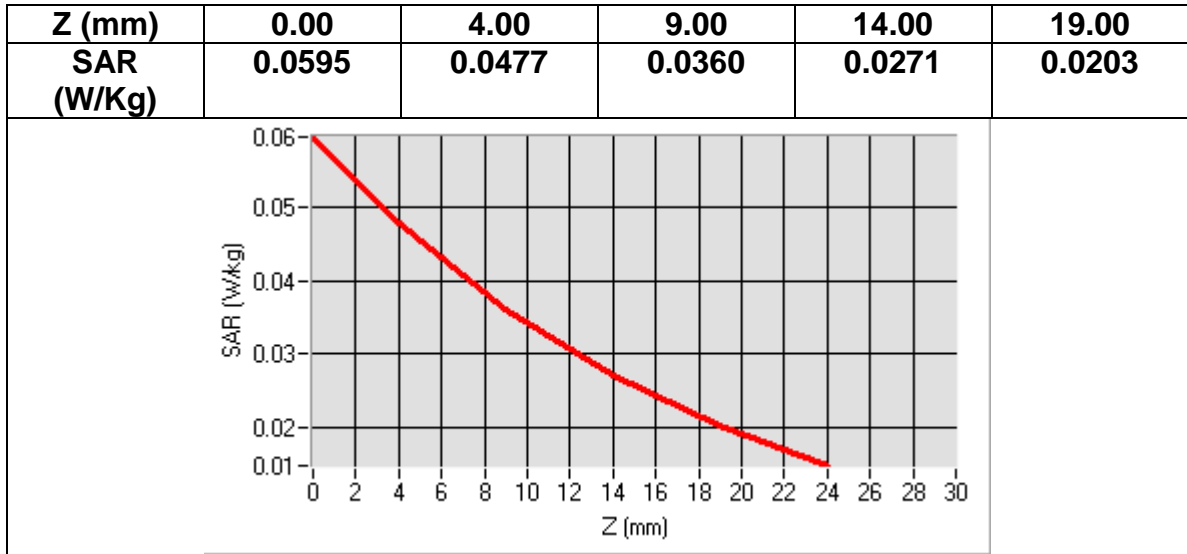
Area Scan	<u>dx=8mm dy=8mmh= 5.00 mm</u>
Zoom Scan	<u>7x7x7,dx=5mm dy=5mm dz=5mm, dx=8mm dy=8mm, h= 5.00 mm</u>
Phantom	<u>ELL16</u>
Device Position	<u>Bottom</u>
Band	<u>Band2 WCDMA1900+RMC</u>
Channels	<u>Middle</u>
Signal	<u>WCDMA (Crest factor: 1.0)</u>

Frequency (MHz)	1880.000000
Relative permittivity (real part)	51.181801
Relative permittivity (imaginary part)	14.969100
Conductivity (S/m)	1.563439
Variation (%)	-2.600000



Maximum location: X=-2.00, Y=3.00
SAR Peak: 0.08 W/kg

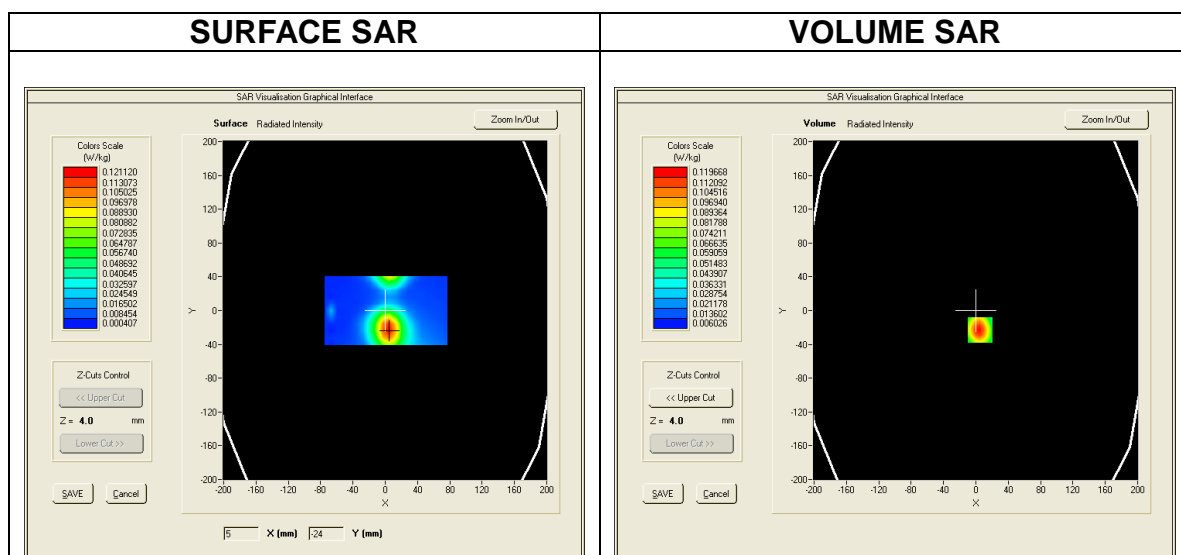
SAR 10g (W/Kg)	0.037873
SAR 1g (W/Kg)	0.054284



MEASUREMENT 12
Date of measurement: 2016/07/07

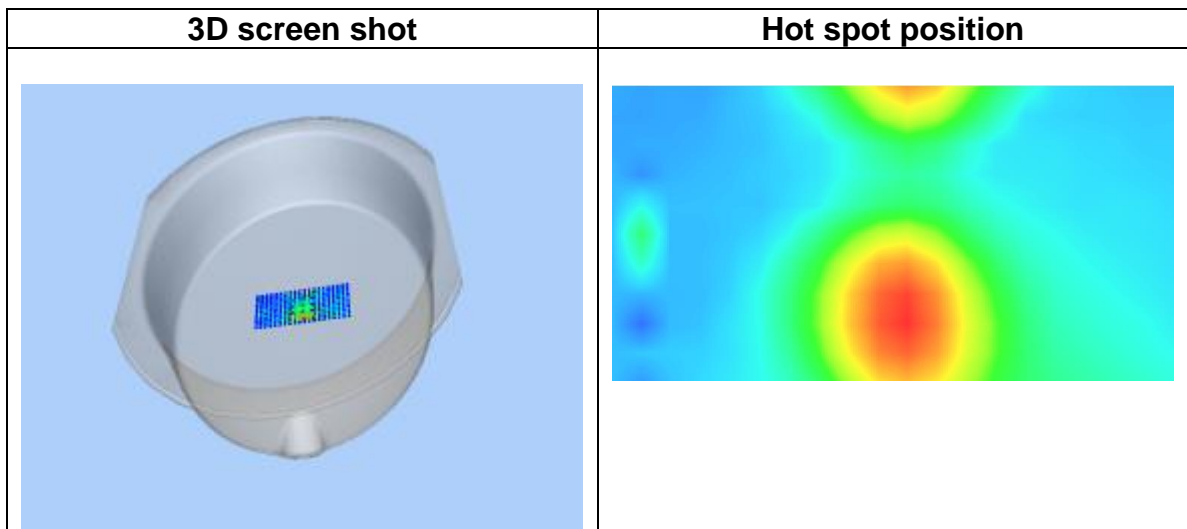
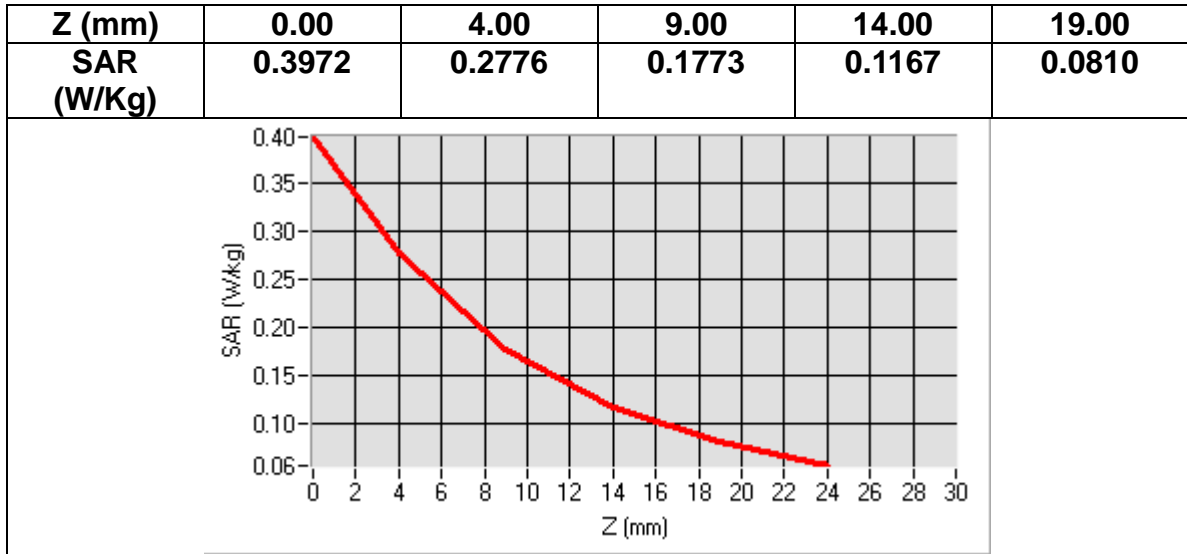
Area Scan	<u>dx=8mm dy=8mmh= 5.00 mm</u>
Zoom Scan	<u>7x7x7,dx=5mm dy=5mm dz=5mm, dx=8mm dy=8mm, h= 5.00 mm</u>
Phantom	<u>ELLI16</u>
Device Position	<u>Left</u>
Band	<u>Band2 WCDMA1900+RMC</u>
Channels	<u>Middle</u>
Signal	<u>WCDMA (Crest factor: 1.0)</u>

Frequency (MHz)	1880.000000
Relative permittivity (real part)	51.181801
Relative permittivity (imaginary part)	14.969100
Conductivity (S/m)	1.563439
Variation (%)	-0.140000



Maximum location: X=2.00, Y=-18.00
SAR Peak: 0.44 W/kg

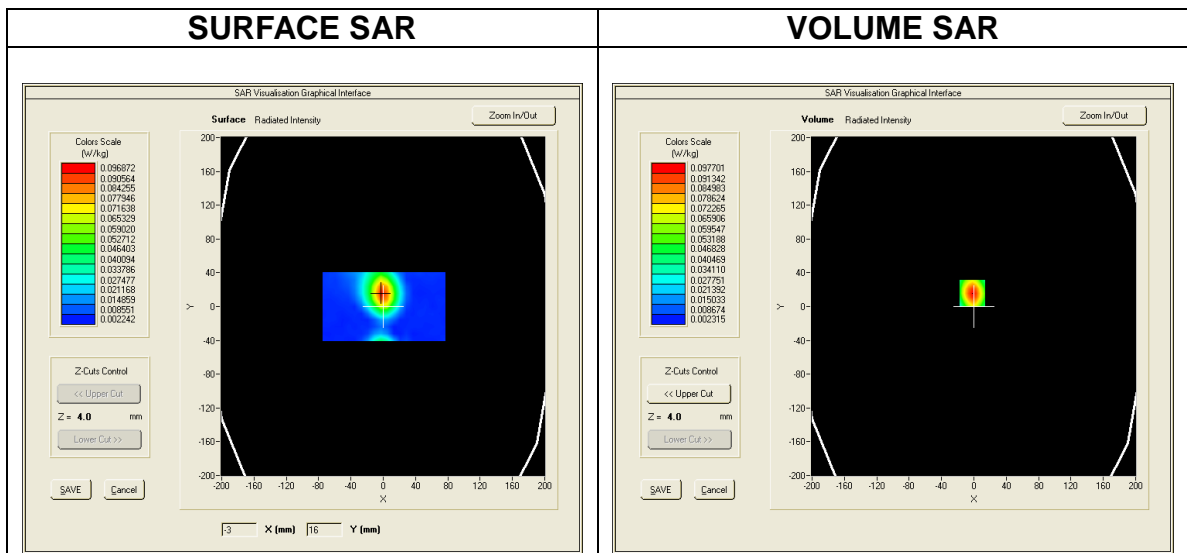
SAR 10g (W/Kg)	0.184882
SAR 1g (W/Kg)	0.298424



MEASUREMENT 13
 Date of measurement: 2016/07/07

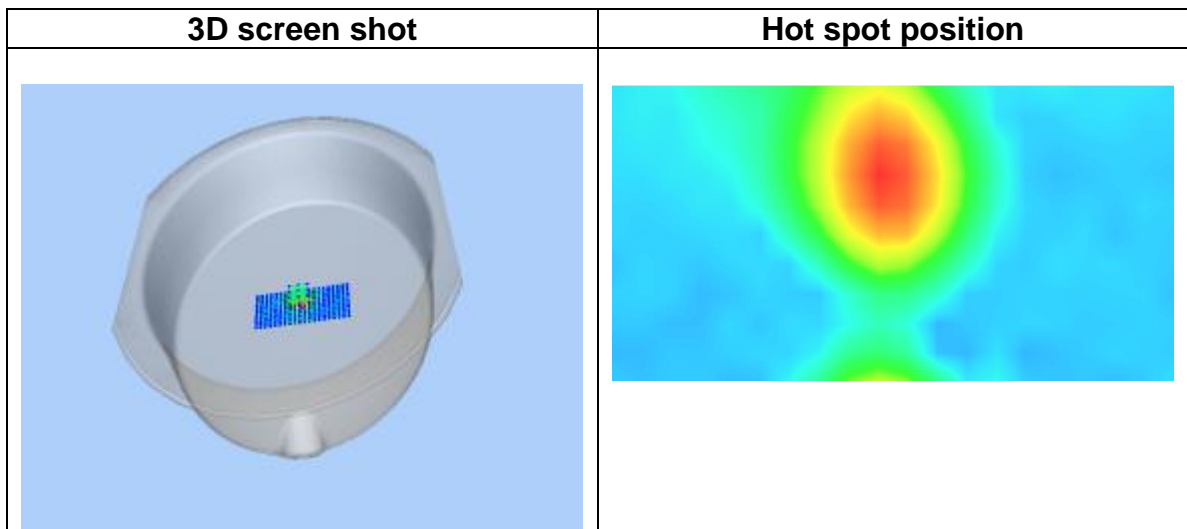
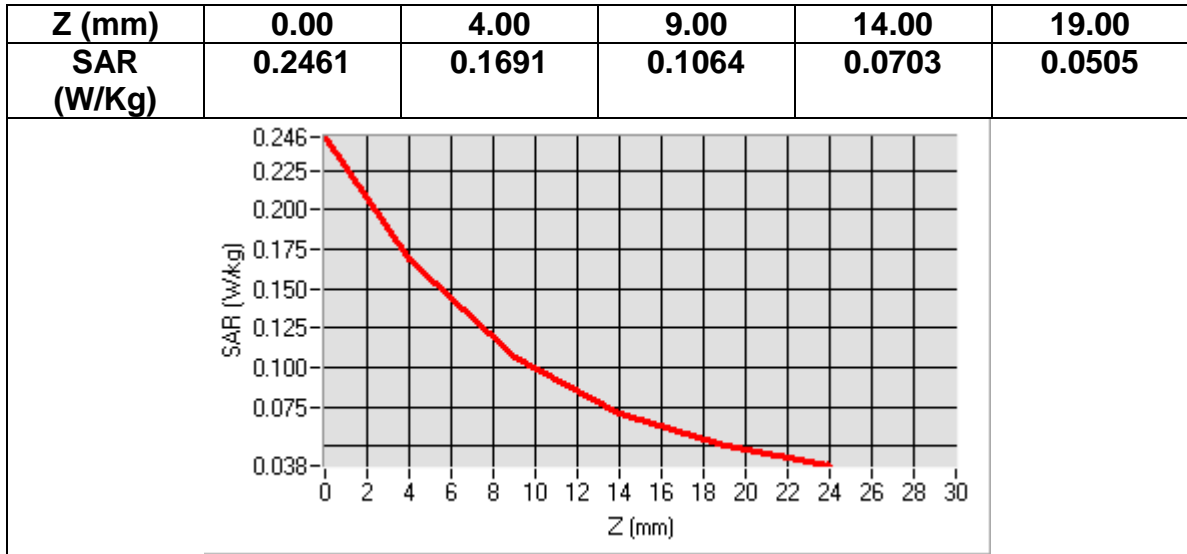
Area Scan	<u>dx=8mm dy=8mmh= 5.00 mm</u>
Zoom Scan	<u>7x7x7,dx=5mm dy=5mm dz=5mm, dx=8mm dy=8mm, h= 5.00 mm</u>
Phantom	<u>ELLI16</u>
Device Position	<u>Right</u>
Band	<u>Band2 WCDMA1900+RMC</u>
Channels	<u>Middle</u>
Signal	<u>WCDMA (Crest factor: 1.0)</u>

Frequency (MHz)	1880.000000
Relative permittivity (real part)	51.181801
Relative permittivity (imaginary part)	14.969100
Conductivity (S/m)	1.563439
Variation (%)	-0.540000



Maximum location: X=-1.00, Y=12.00
SAR Peak: 0.27 W/kg

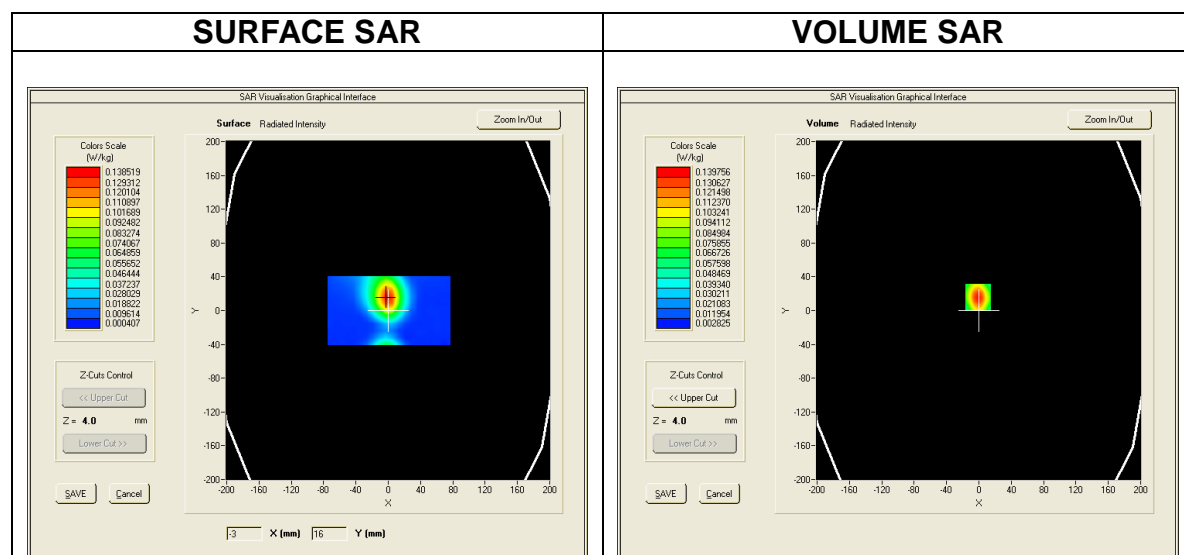
SAR 10g (W/Kg)	0.111583
SAR 1g (W/Kg)	0.181848



MEASUREMENT 14
Date of measurement: 2016/07/07

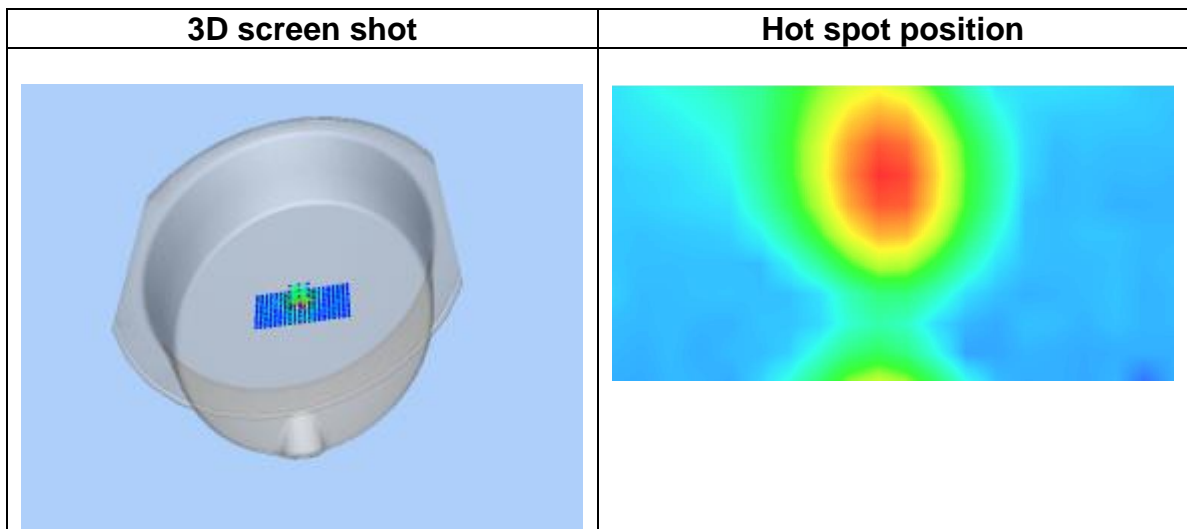
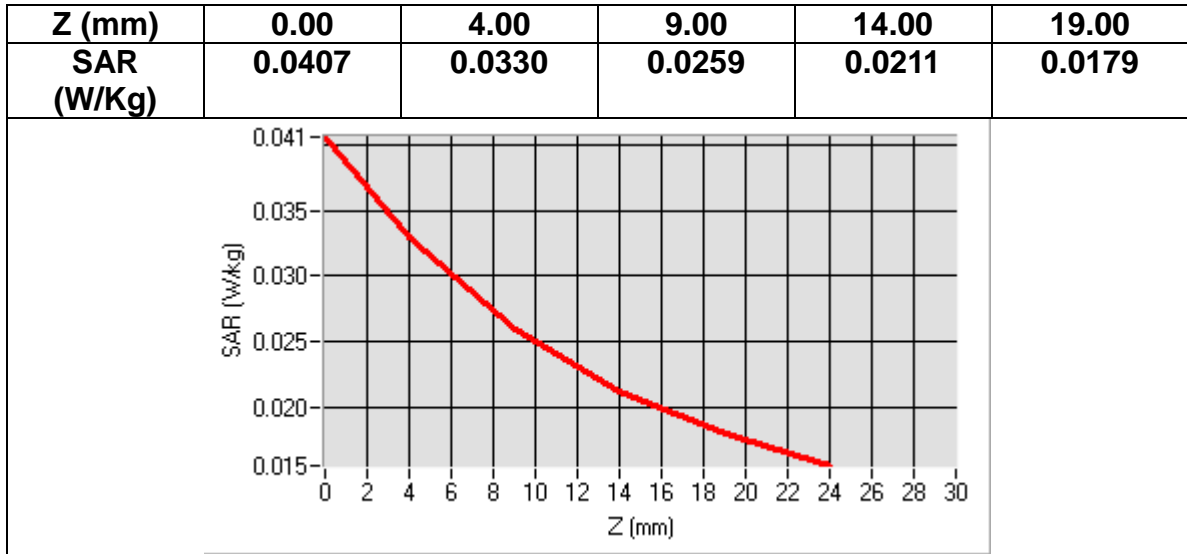
Area Scan	<u>dx=8mm dy=8mmh= 5.00 mm</u>
Zoom Scan	<u>7x7x7,dx=5mm dy=5mm dz=5mm, dx=8mm dy=8mm, h= 5.00 mm</u>
Phantom	<u>ELL16</u>
Device Position	<u>Bottom</u>
Band	<u>Band2 WCDMA1900+HSPA</u>
Channels	<u>Middle</u>
Signal	<u>WCDMA (Crest factor: 1.0)</u>

Frequency (MHz)	1880.000000
Relative permittivity (real part)	51.181801
Relative permittivity (imaginary part)	14.969100
Conductivity (S/m)	1.563439
Variation (%)	3.690000



Maximum location: X=5.00, Y=8.00
SAR Peak: 0.05 W/kg

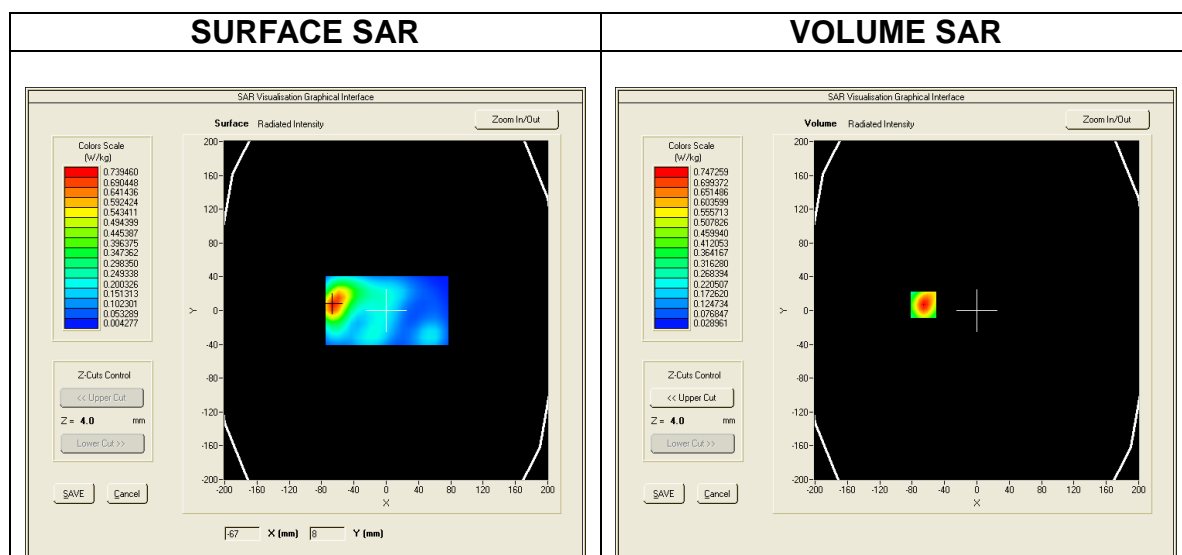
SAR 10g (W/Kg)	0.028664
SAR 1g (W/Kg)	0.038125



MEASUREMENT 15
Date of measurement: 2016/07/07

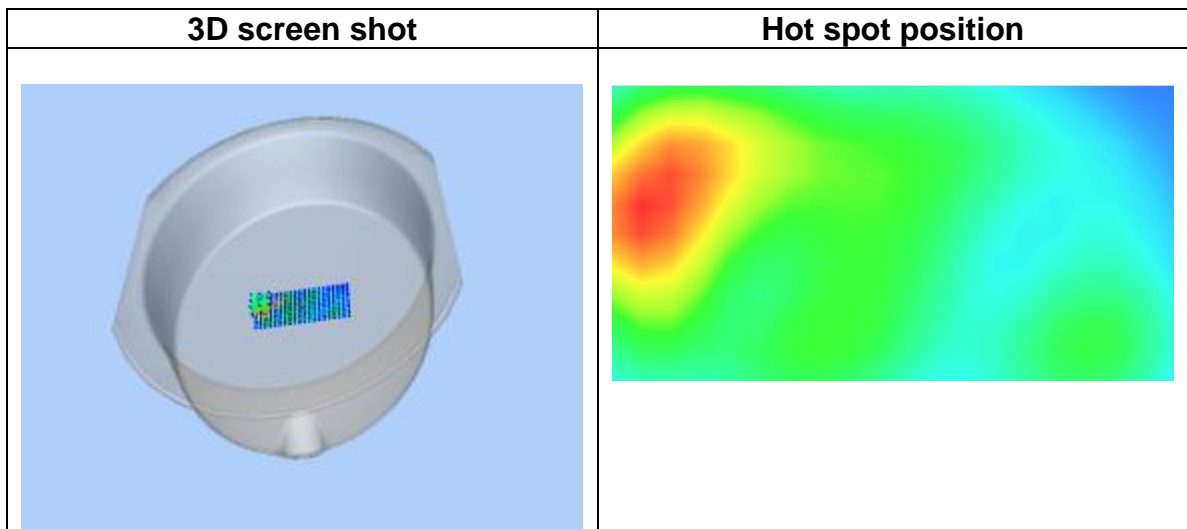
Area Scan	<u>dx=8mm dy=8mmh= 5.00 mm</u>
Zoom Scan	<u>7x7x7,dx=5mm dy=5mm dz=5mm, dx=8mm dy=8mm, h= 5.00 mm</u>
Phantom	<u>ELLI16</u>
Device Position	<u>Left</u>
Band	<u>Band2 WCDMA1900+HSPA</u>
Channels	<u>Middle</u>
Signal	<u>WCDMA (Crest factor: 1.0)</u>

Frequency (MHz)	1880.000000
Relative permittivity (real part)	51.181801
Relative permittivity (imaginary part)	14.969100
Conductivity (S/m)	1.563439
Variation (%)	1.470000



Maximum location: X=0.00, Y=-17.00
SAR Peak: 0.32 W/kg

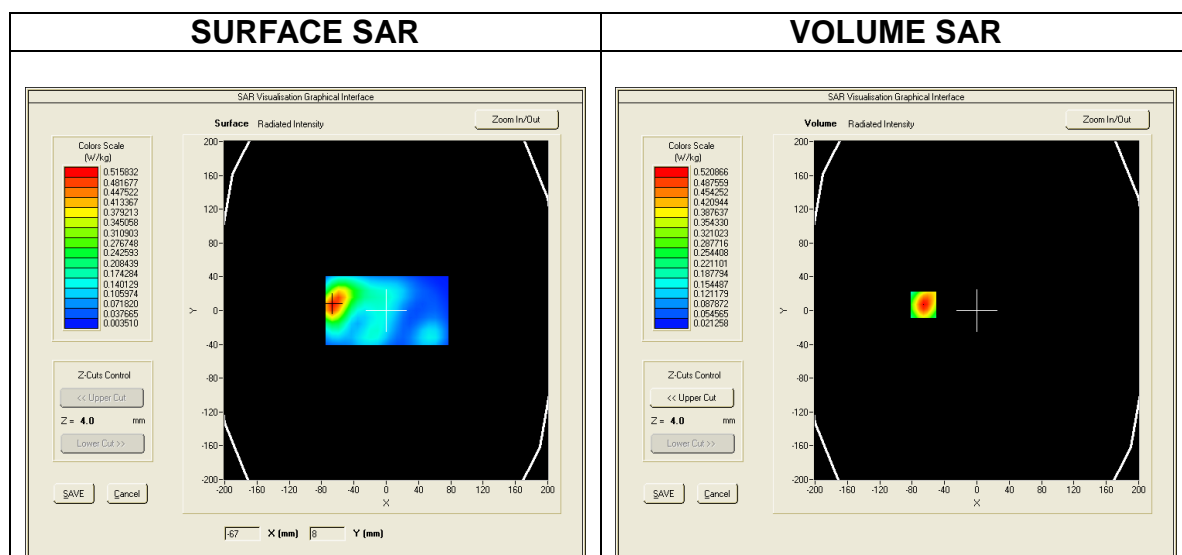
SAR 10g (W/Kg)	0.137466
SAR 1g (W/Kg)	0.221912



MEASUREMENT 16
Date of measurement: 2016/07/07

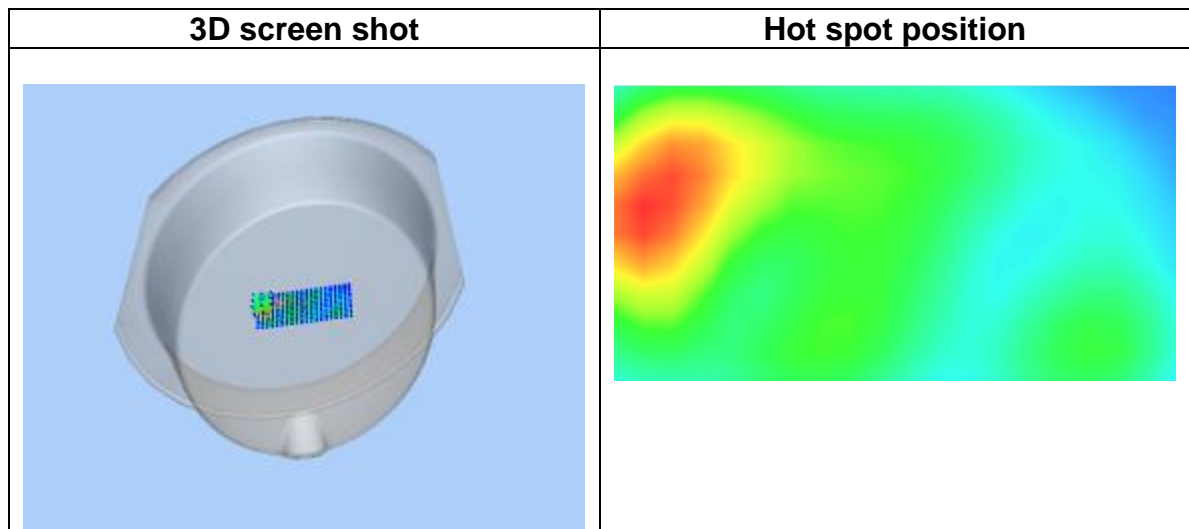
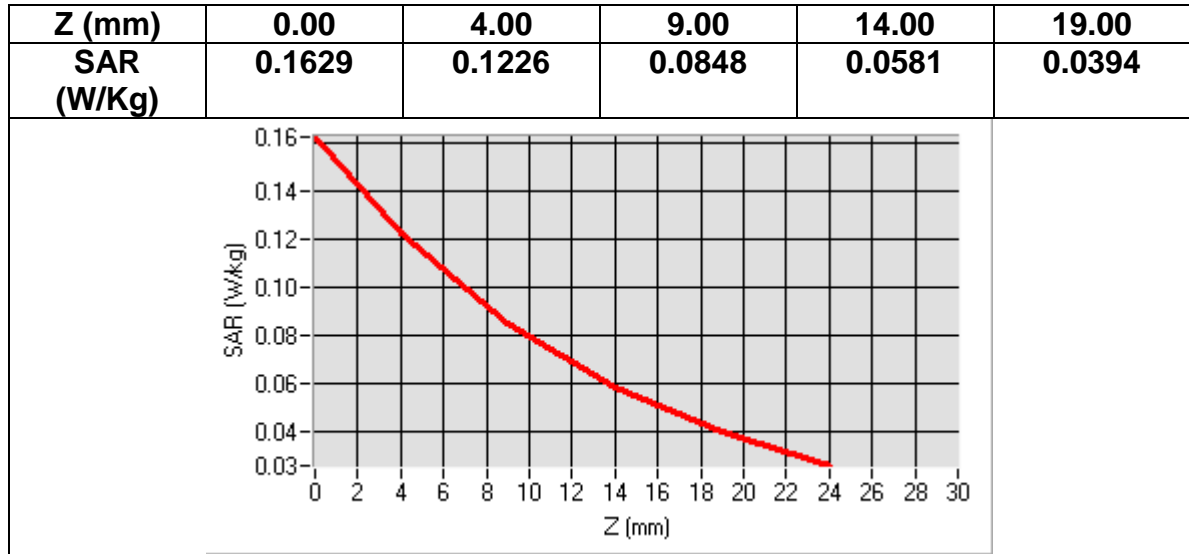
Area Scan	<u>dx=8mm dy=8mmh= 5.00 mm</u>
Zoom Scan	<u>7x7x7,dx=5mm dy=5mm dz=5mm, dx=8mm dy=8mm, h= 5.00 mm</u>
Phantom	<u>ELLI16</u>
Device Position	<u>Right</u>
Band	<u>Band2 WCDMA1900+HSPA</u>
Channels	<u>Middle</u>
Signal	<u>WCDMA (Crest factor: 1.0)</u>

Frequency (MHz)	1880.000000
Relative permittivity (real part)	51.181801
Relative permittivity (imaginary part)	14.969100
Conductivity (S/m)	1.563439
Variation (%)	-0.250000



Maximum location: X=-2.00, Y=16.00
SAR Peak: 0.18 W/kg

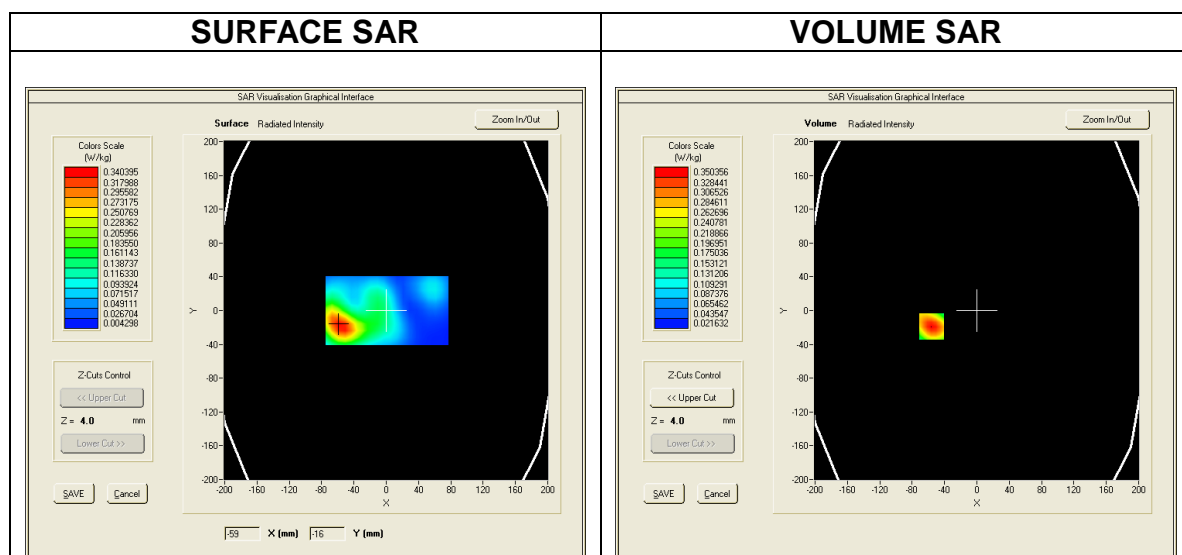
SAR 10g (W/Kg)	0.084791
SAR 1g (W/Kg)	0.132353



MEASUREMENT 17
Date of measurement: 2016/07/07

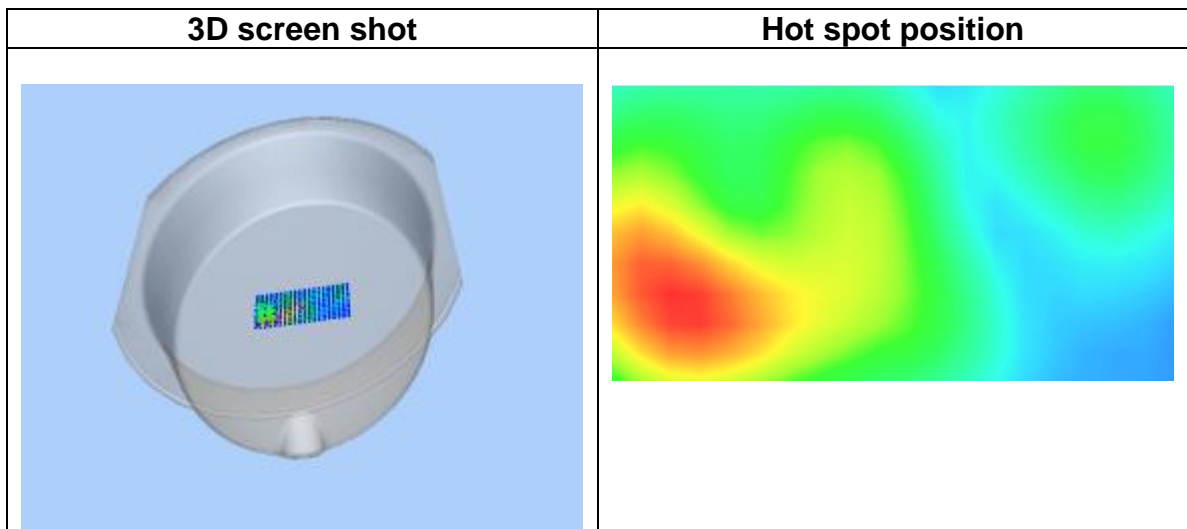
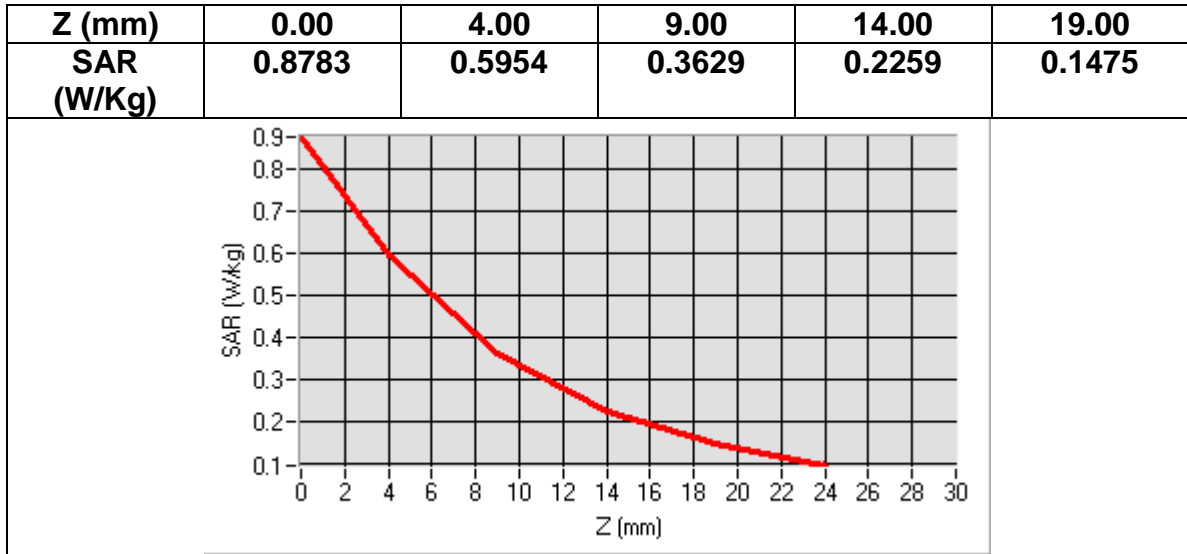
Area Scan	<u>dx=8mm dy=8mmh= 5.00 mm</u>
Zoom Scan	<u>7x7x7,dx=5mm dy=5mm dz=5mm, dx=8mm dy=8mm, h= 5.00 mm</u>
Phantom	<u>ELL16</u>
Device Position	<u>Front</u>
Band	<u>Band2 WCDMA1900+RMC</u>
Channels	<u>Middle</u>
Signal	<u>WCDMA (Crest factor: 1.0)</u>

Frequency (MHz)	1880.000000
Relative permittivity (real part)	51.181801
Relative permittivity (imaginary part)	14.969100
Conductivity (S/m)	1.563439
Variation (%)	0.120000



Maximum location: X=-51.00, Y=-21.00
SAR Peak: 0.99 W/kg

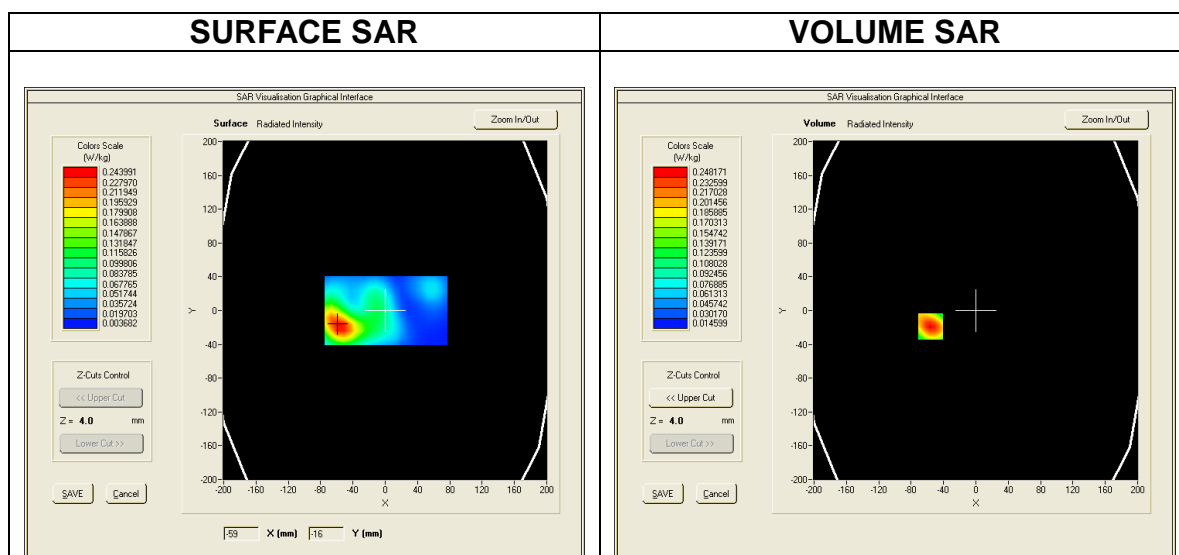
SAR 10g (W/Kg)	0.378796
SAR 1g (W/Kg)	0.639948



MEASUREMENT 18
Date of measurement: 2016/07/07

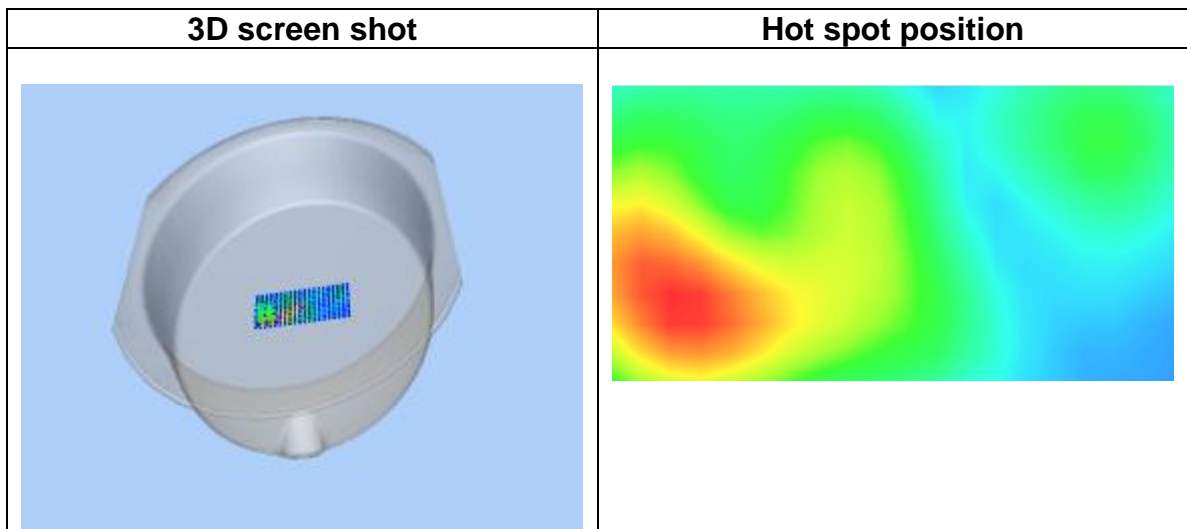
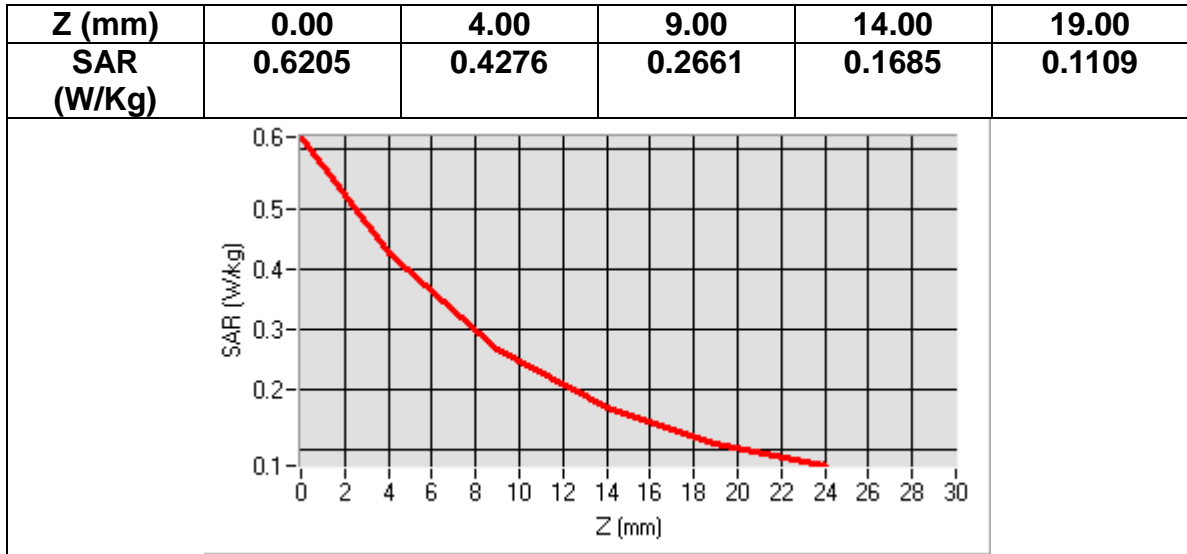
Area Scan	<u>dx=8mm dy=8mmh= 5.00 mm</u>
Zoom Scan	<u>7x7x7,dx=5mm dy=5mm dz=5mm, dx=8mm dy=8mm, h= 5.00 mm</u>
Phantom	<u>ELLI16</u>
Device Position	<u>Front</u>
Band	<u>Band2 WCDMA1900+HSPA</u>
Channels	<u>Middle</u>
Signal	<u>WCDMA (Crest factor: 1.0)</u>

Frequency (MHz)	1880.000000
Relative permittivity (real part)	51.181801
Relative permittivity (imaginary part)	14.969100
Conductivity (S/m)	1.563439
Variation (%)	0.580000



Maximum location: X=-51.00, Y=-21.00
SAR Peak: 0.70 W/kg

SAR 10g (W/Kg)	0.276134
SAR 1g (W/Kg)	0.460329

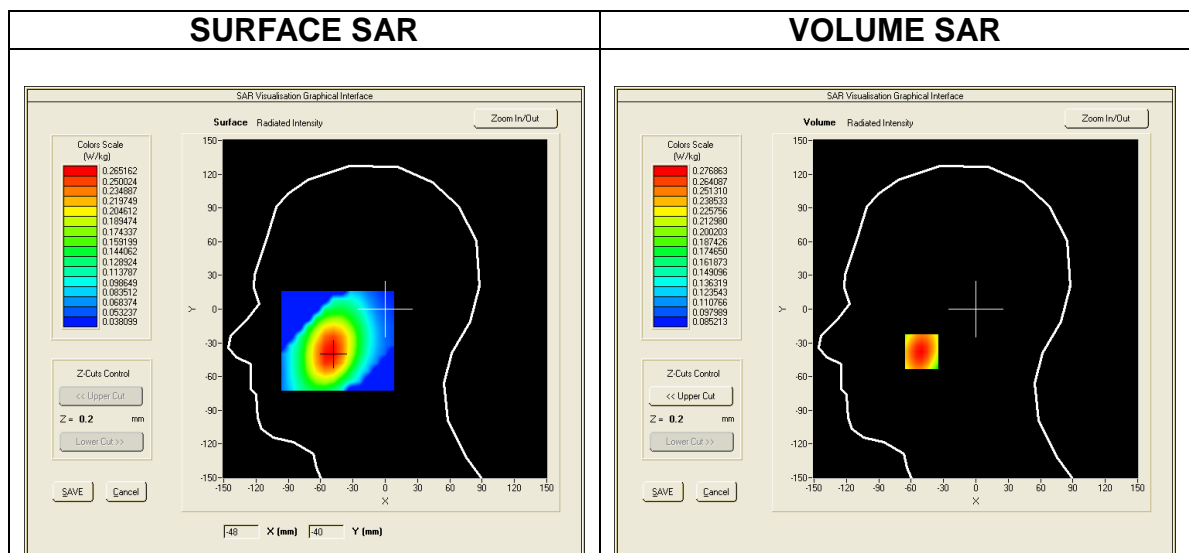


WCDMA BAND5

MEASUREMENT 1
 Date of measurement: 2016/07/02

Area Scan	<u>sam_direct_droit2_surf8mm.txt, h= 5.00 mm</u>
Zoom Scan	<u>7x7x7,dx=5mm dy=5mm dz=5mm, sam_direct_droit2_surf8mm.txt, h= 5.00 mm</u>
Phantom	<u>Right head</u>
Device Position	<u>Cheek</u>
Band	<u>Band5 WCDMA850+HSPA</u>
Channels	<u>Middle</u>
Signal	<u>WCDMA (Crest factor: 1.0)</u>

Frequency (MHz)	836.400024
Relative permittivity (real part)	41.500000
Relative permittivity (imaginary part)	19.400000
Conductivity (S/m)	0.901453
Variation (%)	2.650000

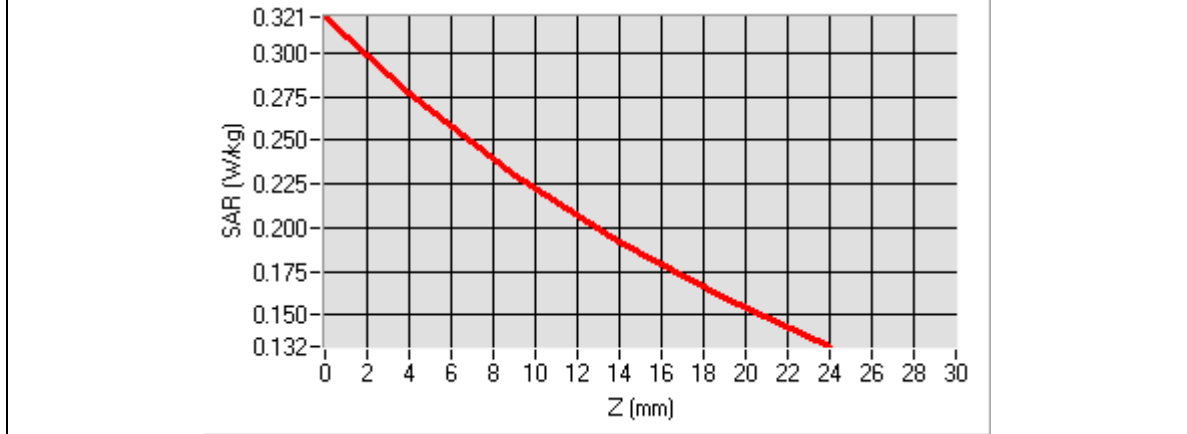


Maximum location: X=-50.00, Y=-38.00
SAR Peak: 0.32 W/kg

SAR 10g (W/Kg)	0.210483
-----------------------	----------

SAR 1g (W/Kg)	0.266878
----------------------	----------

Z (mm)	0.00	4.00	9.00	14.00	19.00
SAR (W/Kg)	0.3209	0.2769	0.2301	0.1915	0.1595

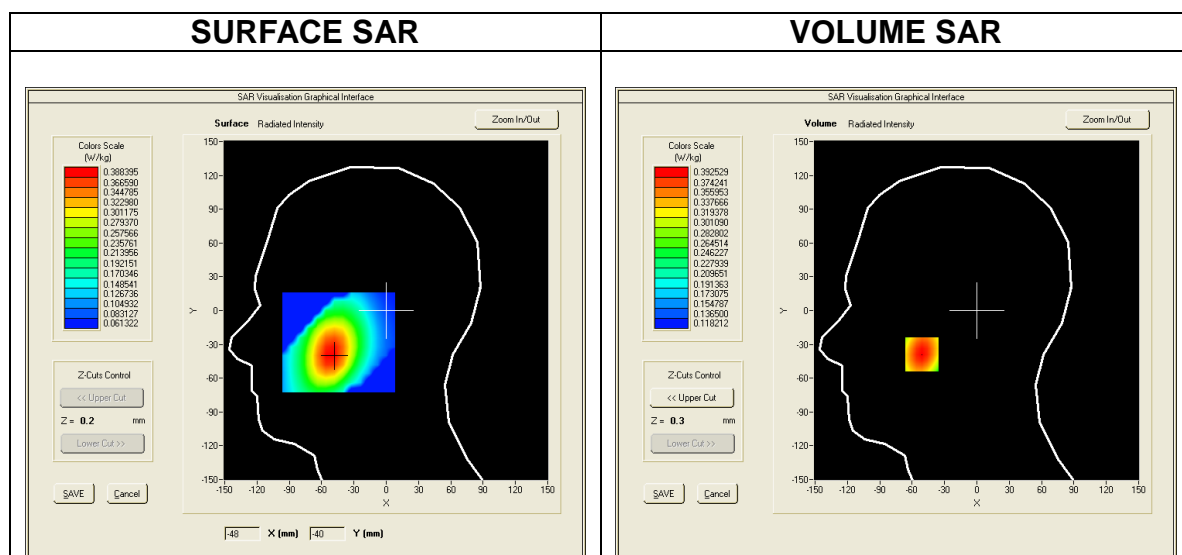


3D screen shot	Hot spot position

MEASUREMENT 2
Date of measurement: 2016/07/02

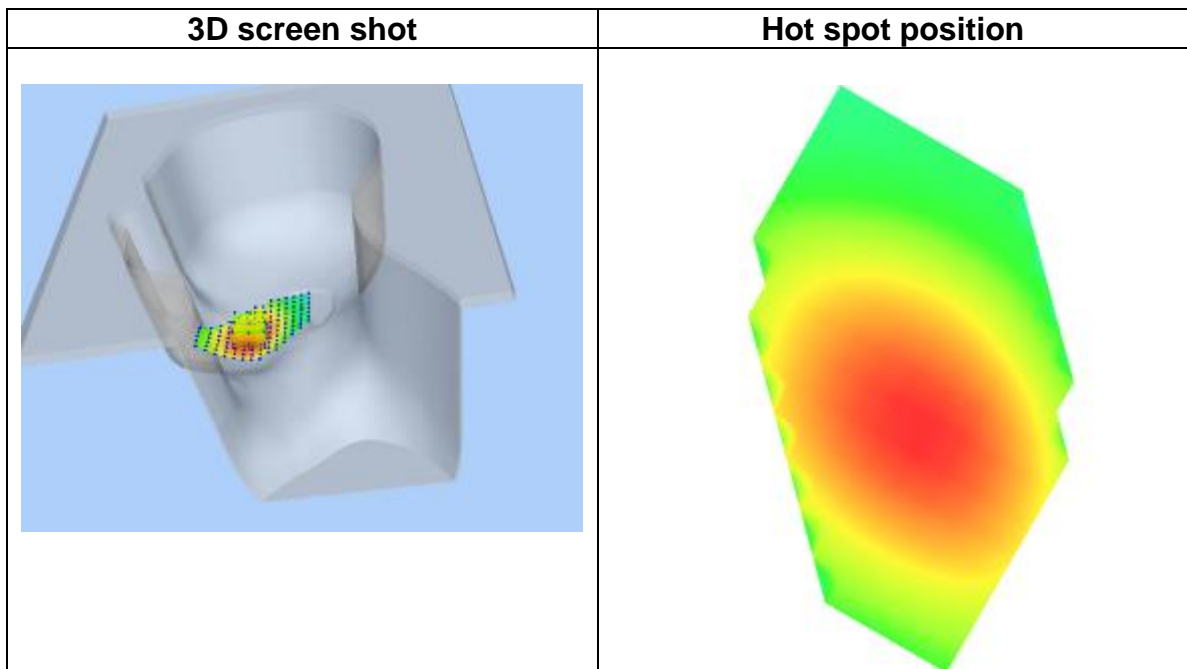
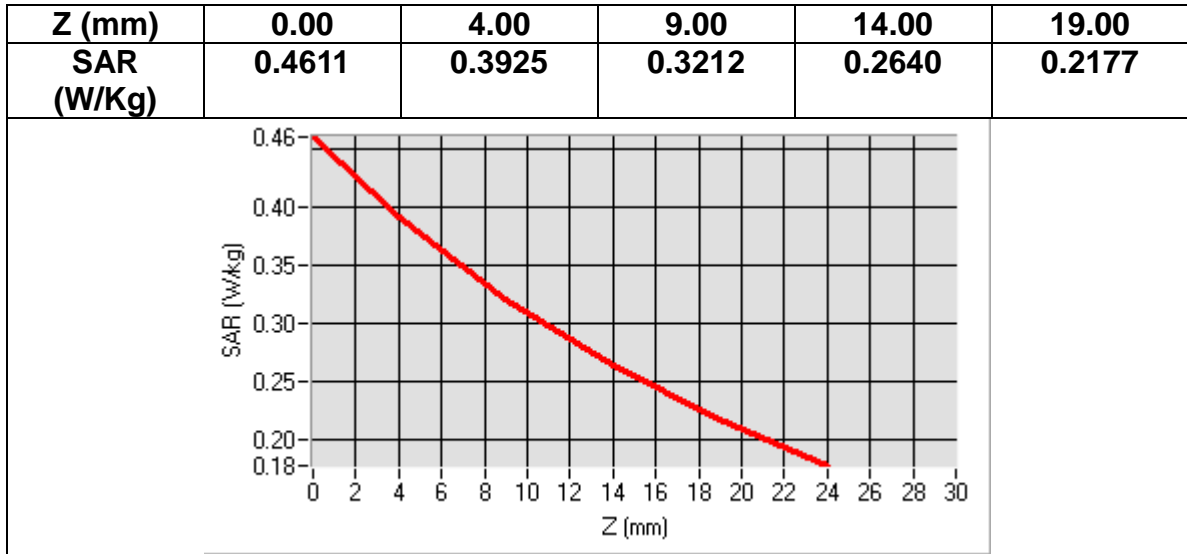
Area Scan	<u>sam_direct_droit2_surf8mm.txt, h= 5.00 mm</u>
Zoom Scan	<u>7x7x7,dx=5mm dy=5mm dz=5mm, sam_direct_droit2_surf8mm.txt, h= 5.00 mm</u>
Phantom	<u>Right head</u>
Device Position	<u>Cheek</u>
Band	<u>Band5 WCDMA850+RMC</u>
Channels	<u>Middle</u>
Signal	<u>WCDMA (Crest factor: 1.0)</u>

Frequency (MHz)	836.400024
Relative permittivity (real part)	41.500000
Relative permittivity (imaginary part)	19.400000
Conductivity (S/m)	0.901453
Variation (%)	3.010000



Maximum location: X=-51.00, Y=-39.00
SAR Peak: 0.46 W/kg

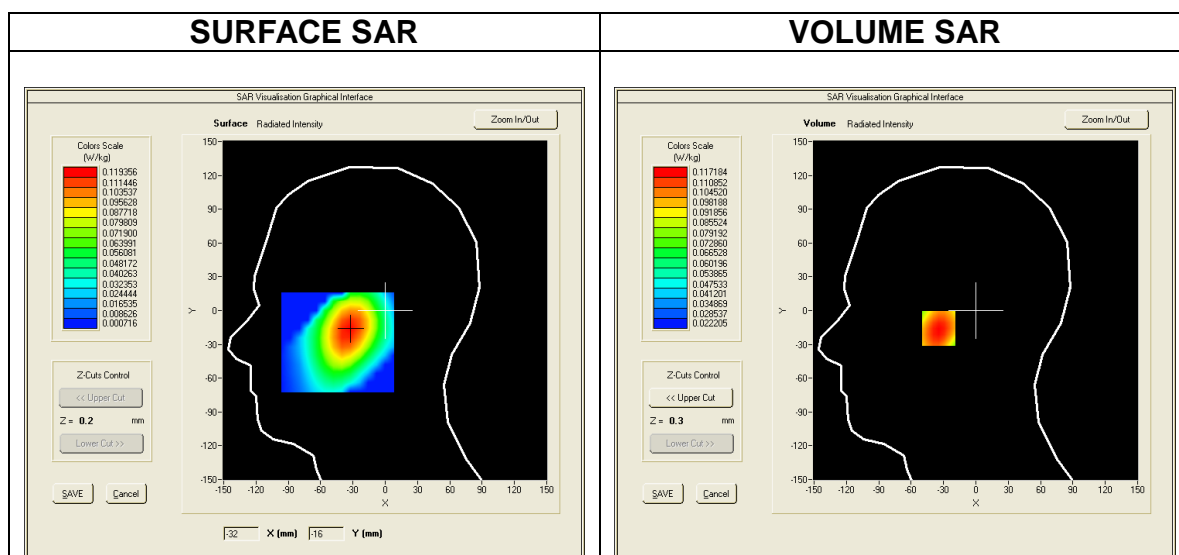
SAR 10g (W/Kg)	0.295381
SAR 1g (W/Kg)	0.378310



MEASUREMENT 3
Date of measurement: 2016/07/02

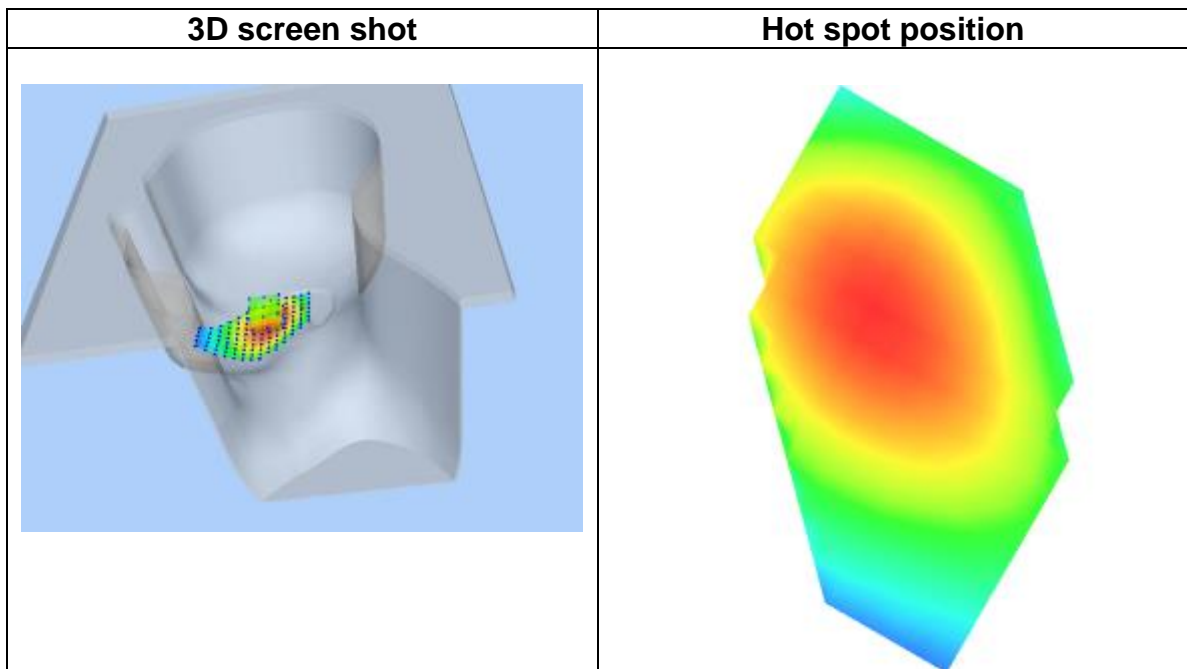
Area Scan	<u>sam_direct_droit2_surf8mm.txt, h= 5.00 mm</u>
Zoom Scan	<u>7x7x7,dx=5mm dy=5mm dz=5mm, sam_direct_droit2_surf8mm.txt, h= 5.00 mm</u>
Phantom	<u>Right head</u>
Device Position	<u>Tilt</u>
Band	<u>Band5 WCDMA850+HSPA</u>
Channels	<u>Middle</u>
Signal	<u>WCDMA (Crest factor: 1.0)</u>

Frequency (MHz)	836.400024
Relative permittivity (real part)	41.500000
Relative permittivity (imaginary part)	19.400000
Conductivity (S/m)	0.901453
Variation (%)	-1.470000



Maximum location: X=-33.00, Y=-16.00
SAR Peak: 0.14 W/kg

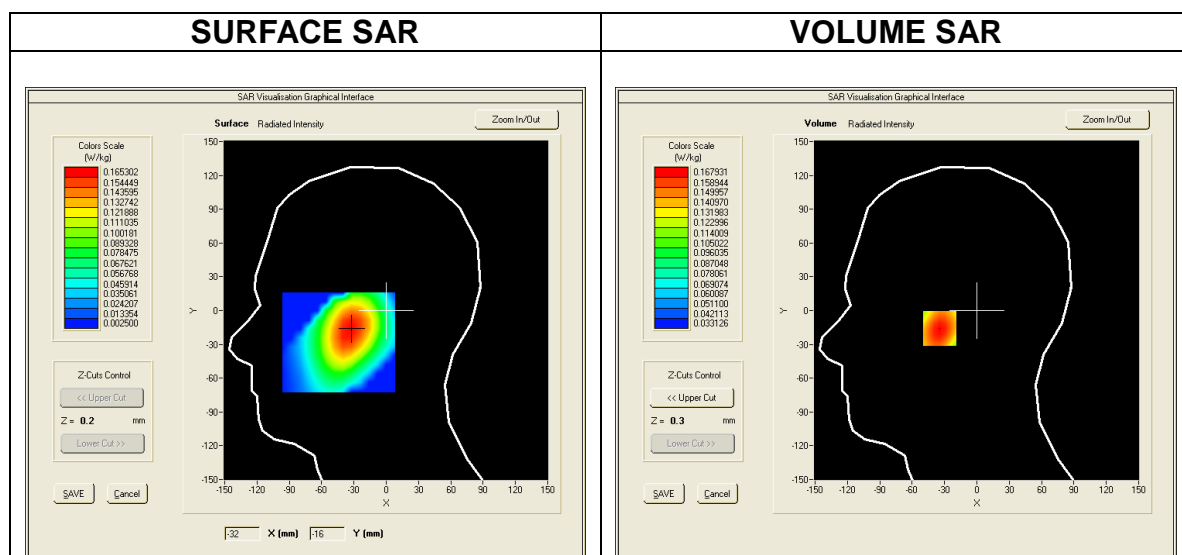
SAR 10g (W/Kg)	0.083305
SAR 1g (W/Kg)	0.112433



MEASUREMENT 4
Date of measurement: 2016/07/02

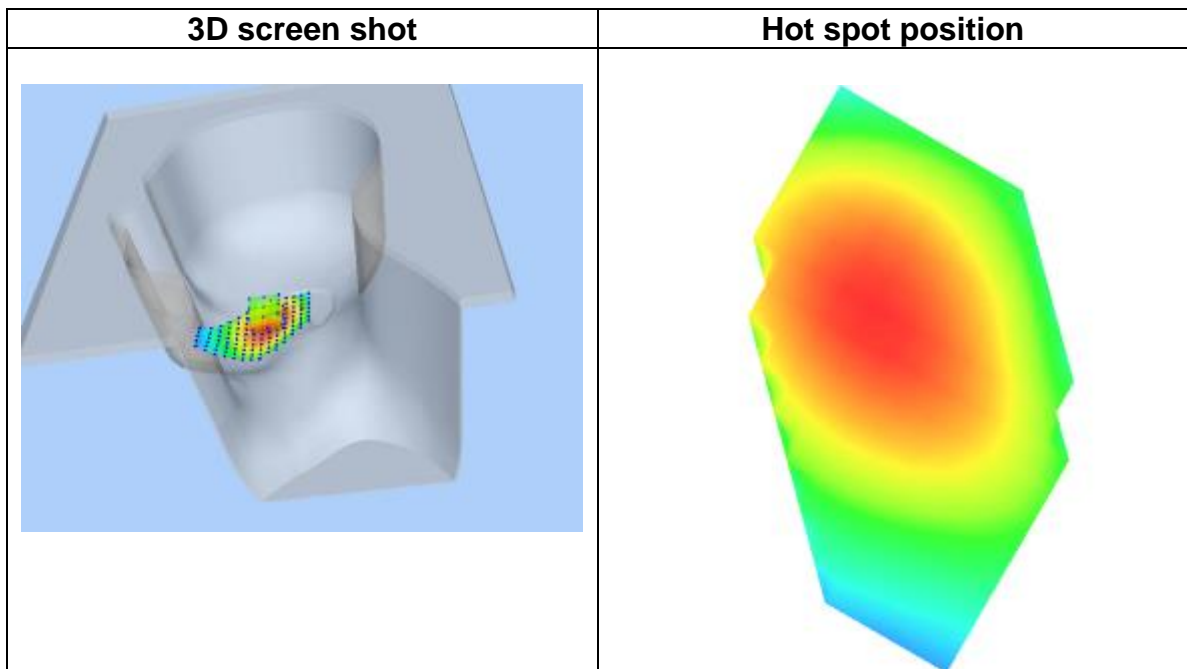
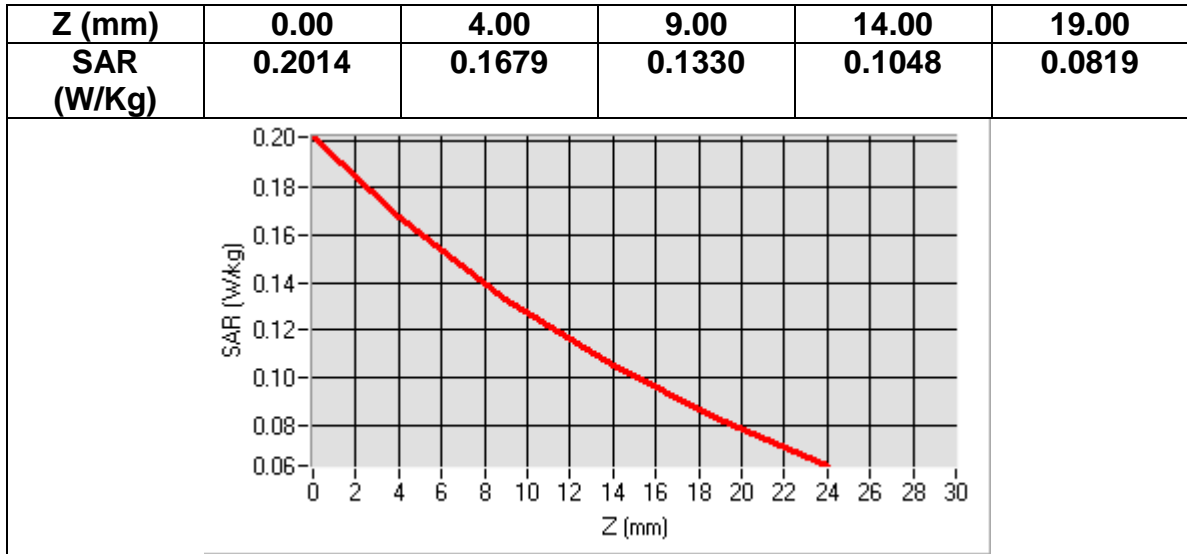
Area Scan	<u>sam_direct_droit2_surf8mm.txt, h= 5.00 mm</u>
Zoom Scan	<u>7x7x7,dx=5mm dy=5mm dz=5mm, sam_direct_droit2_surf8mm.txt, h= 5.00 mm</u>
Phantom	<u>Right head</u>
Device Position	<u>Tilt</u>
Band	<u>Band5 WCDMA850+RMC</u>
Channels	<u>Middle</u>
Signal	<u>WCDMA (Crest factor: 1.0)</u>

Frequency (MHz)	836.400024
Relative permittivity (real part)	41.500000
Relative permittivity (imaginary part)	19.400000
Conductivity (S/m)	0.901453
Variation (%)	-0.010000



Maximum location: X=-33.00, Y=-16.00
SAR Peak: 0.20 W/kg

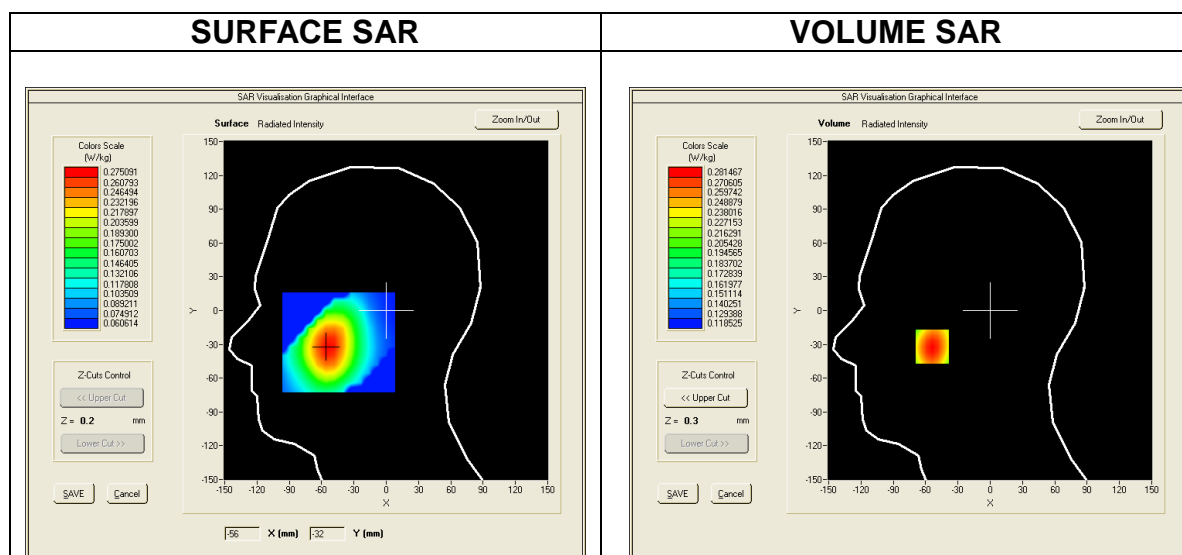
SAR 10g (W/Kg)	0.119797
SAR 1g (W/Kg)	0.161056



MEASUREMENT 5
Date of measurement: 2016/07/02

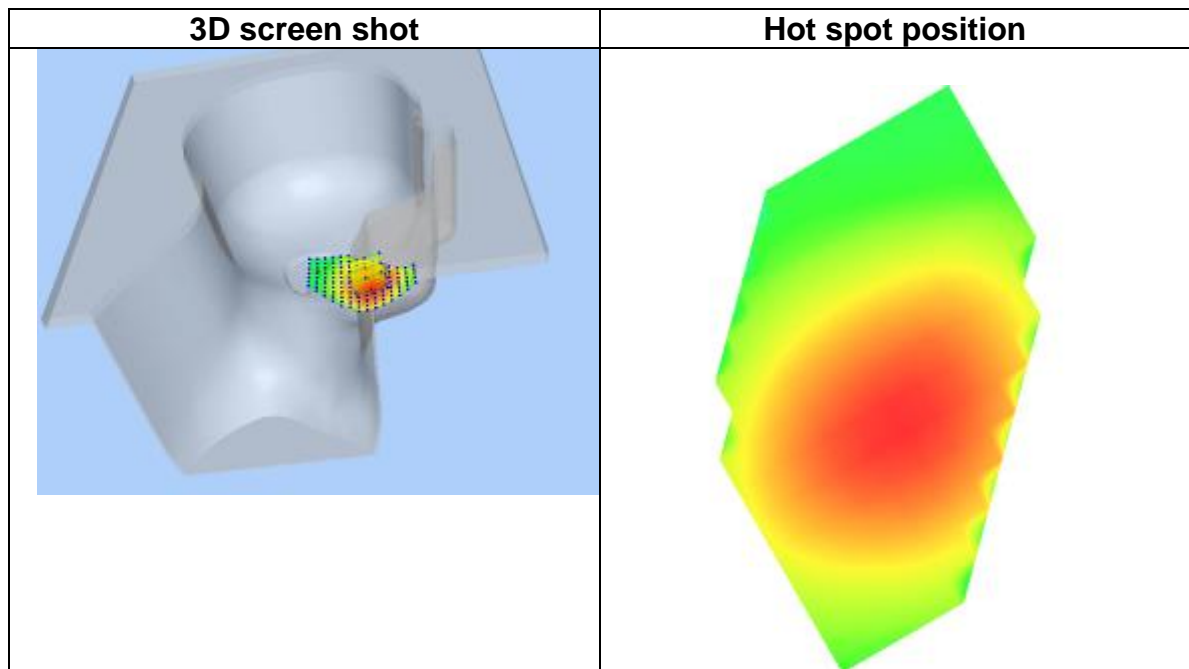
Area Scan	<u>sam_direct_droit2_surf8mm.txt, h= 5.00 mm</u>
Zoom Scan	<u>7x7x7,dx=5mm dy=5mm dz=5mm, sam_direct_droit2_surf8mm.txt, h= 5.00 mm</u>
Phantom	<u>Left head</u>
Device Position	<u>Cheek</u>
Band	<u>Band5 WCDMA850+HSPA</u>
Channels	<u>Middle</u>
Signal	<u>WCDMA (Crest factor: 1.0)</u>

Frequency (MHz)	836.400024
Relative permittivity (real part)	41.500000
Relative permittivity (imaginary part)	19.400000
Conductivity (S/m)	0.901453
Variation (%)	-0.120000



Maximum location: X=-54.00, Y=-32.00
SAR Peak: 0.32 W/kg

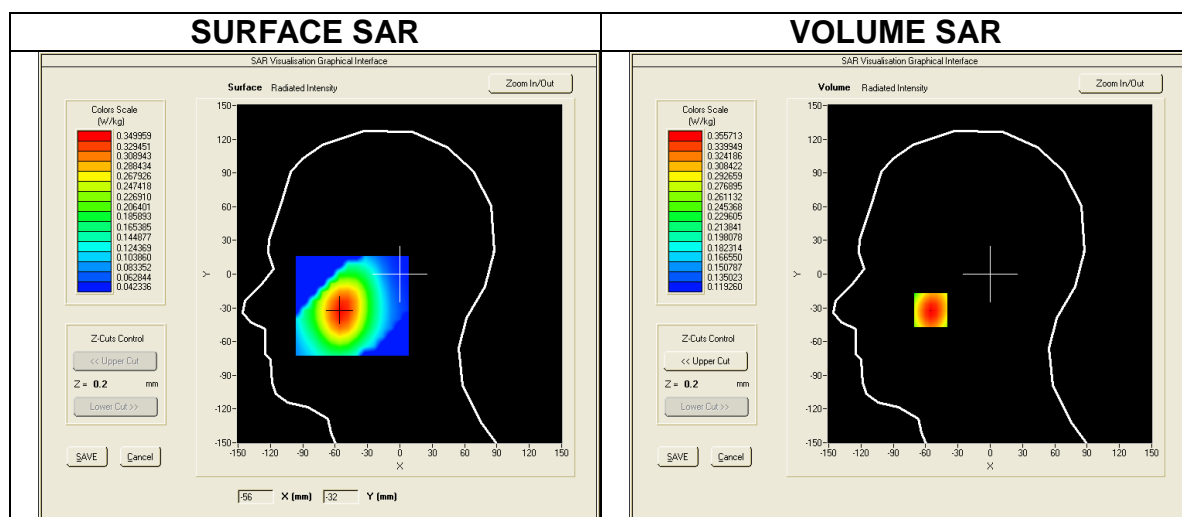
SAR 10g (W/Kg)	0.221907
SAR 1g (W/Kg)	0.272486



MEASUREMENT 6
Date of measurement: 2016/07/02

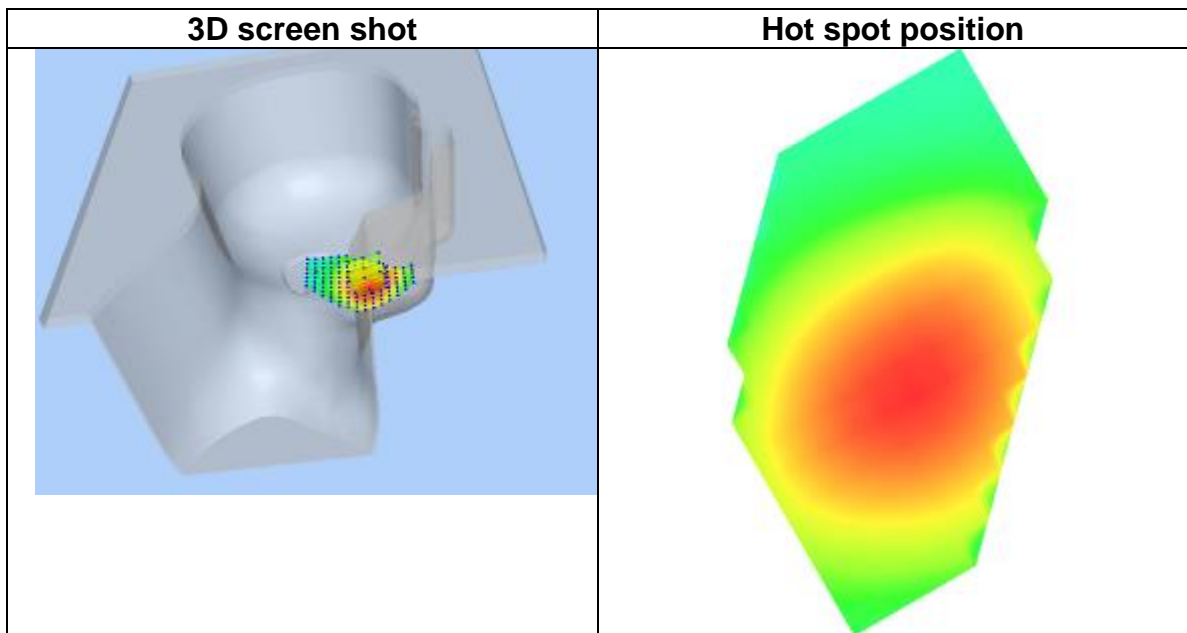
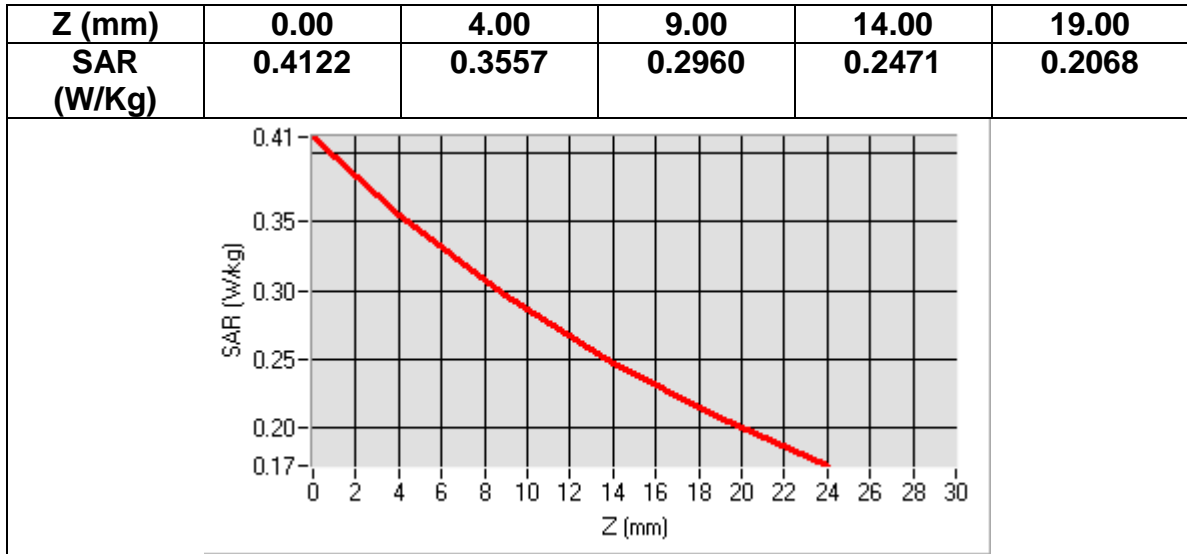
Area Scan	<u>sam_direct_droit2_surf8mm.txt, h= 5.00 mm</u>
Zoom Scan	<u>7x7x7,dx=5mm dy=5mm dz=5mm, sam_direct_droit2_surf8mm.txt, h= 5.00 mm</u>
Phantom	<u>Left head</u>
Device Position	<u>Cheek</u>
Band	<u>Band5 WCDMA850+RMC</u>
Channels	<u>Middle</u>
Signal	<u>WCDMA (Crest factor: 1.0)</u>

Frequency (MHz)	836.400024
Relative permittivity (real part)	41.500000
Relative permittivity (imaginary part)	19.400000
Conductivity (S/m)	0.901453
Variation (%)	-0.680000



Maximum location: X=-55.00, Y=-32.00
SAR Peak: 0.41 W/kg

SAR 10g (W/Kg)	0.269779
SAR 1g (W/Kg)	0.342986



MEASUREMENT 7
 Date of measurement: 2016/07/02

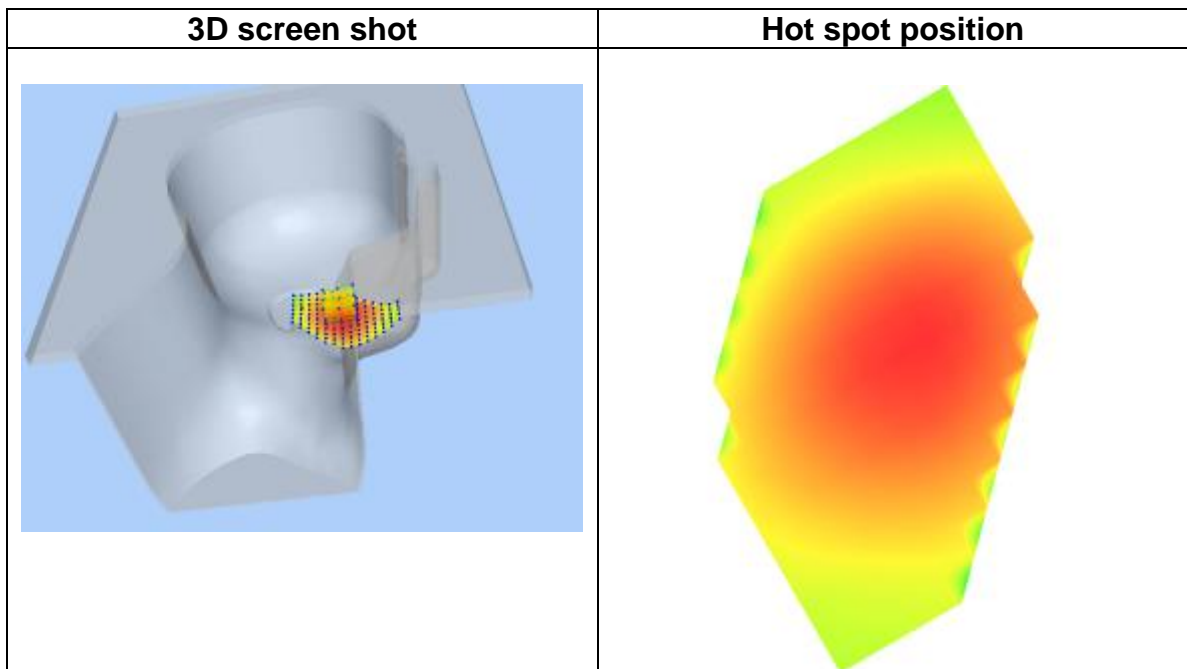
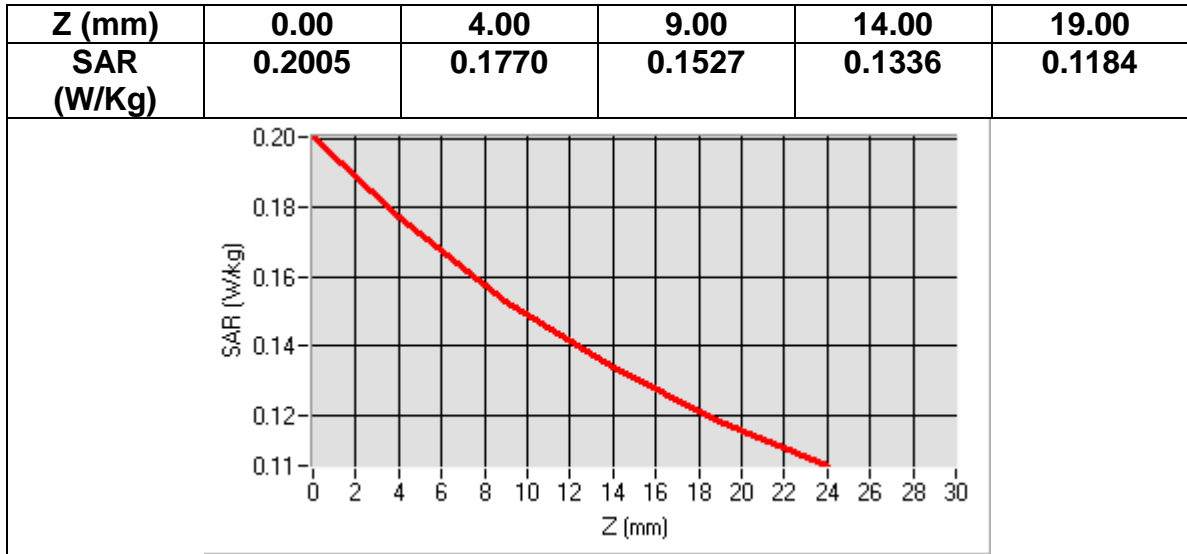
Area Scan	<u>sam_direct_droit2_surf8mm.txt, h= 5.00 mm</u>
Zoom Scan	<u>7x7x7,dx=5mm dy=5mm dz=5mm, sam_direct_droit2_surf8mm.txt, h= 5.00 mm</u>
Phantom	<u>Left head</u>
Device Position	<u>Tilt</u>
Band	<u>Band5 WCDMA850+HSPA</u>
Channels	<u>Middle</u>
Signal	<u>WCDMA (Crest factor: 1.0)</u>

Frequency (MHz)	836.400024
Relative permittivity (real part)	41.500000
Relative permittivity (imaginary part)	19.400000
Conductivity (S/m)	0.901453
Variation (%)	-0.080000



Maximum location: X=-40.00, Y=-18.00
SAR Peak: 0.20 W/kg

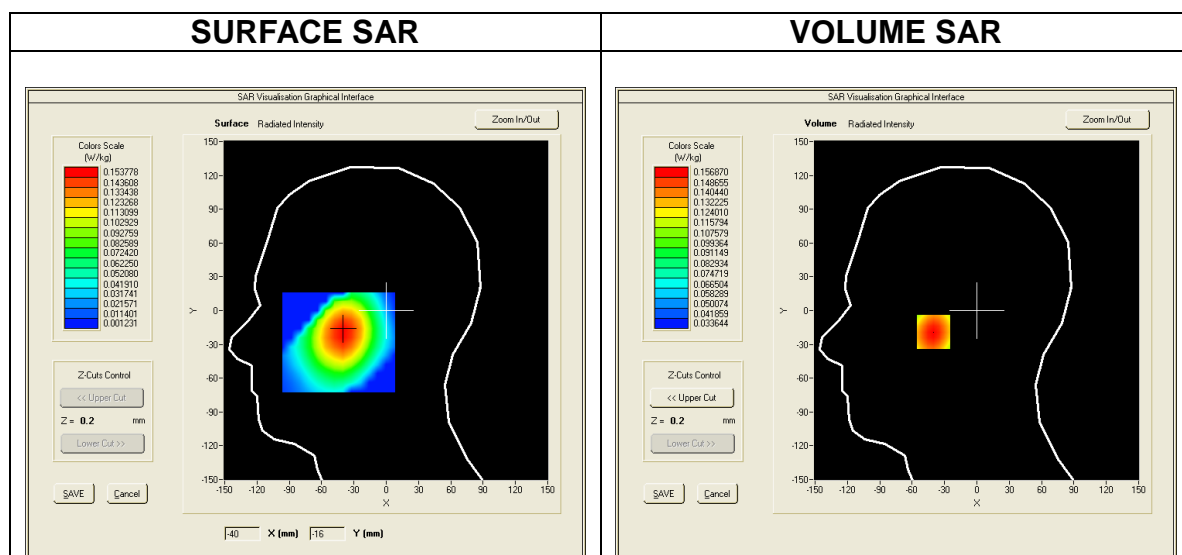
SAR 10g (W/Kg)	0.144342
SAR 1g (W/Kg)	0.172536



MEASUREMENT 8
Date of measurement: 2016/07/02

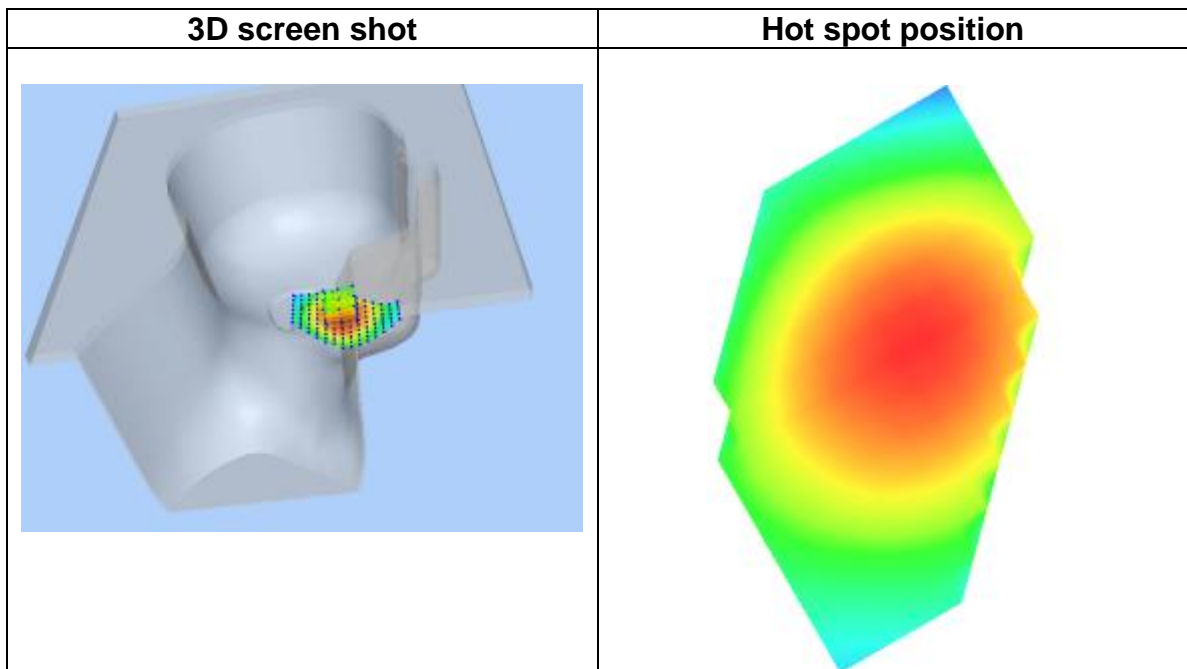
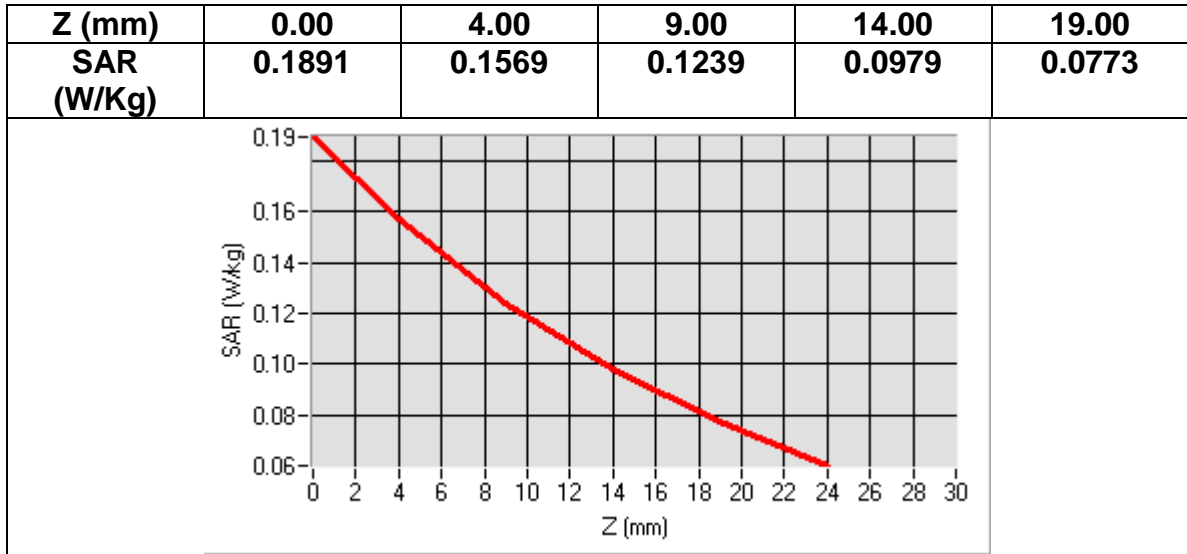
Area Scan	<u>sam_direct_droit2_surf8mm.txt, h= 5.00 mm</u>
Zoom Scan	<u>7x7x7,dx=5mm dy=5mm dz=5mm, sam_direct_droit2_surf8mm.txt, h= 5.00 mm</u>
Phantom	<u>Left head</u>
Device Position	<u>Tilt</u>
Band	<u>Band5 WCDMA850+RMC</u>
Channels	<u>Middle</u>
Signal	<u>WCDMA (Crest factor: 1.0)</u>

Frequency (MHz)	836.400024
Relative permittivity (real part)	41.500000
Relative permittivity (imaginary part)	19.400000
Conductivity (S/m)	0.901453
Variation (%)	-1.640000



Maximum location: X=-40.00, Y=-19.00
SAR Peak: 0.19 W/kg

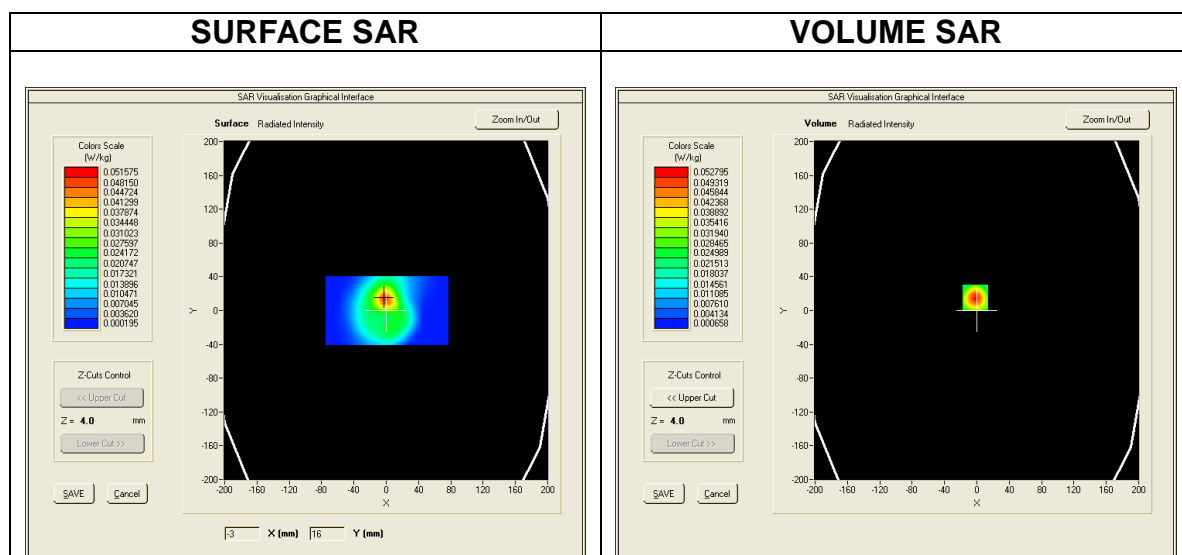
SAR 10g (W/Kg)	0.112282
SAR 1g (W/Kg)	0.150494



MEASUREMENT 9
Date of measurement: 2016/07/05

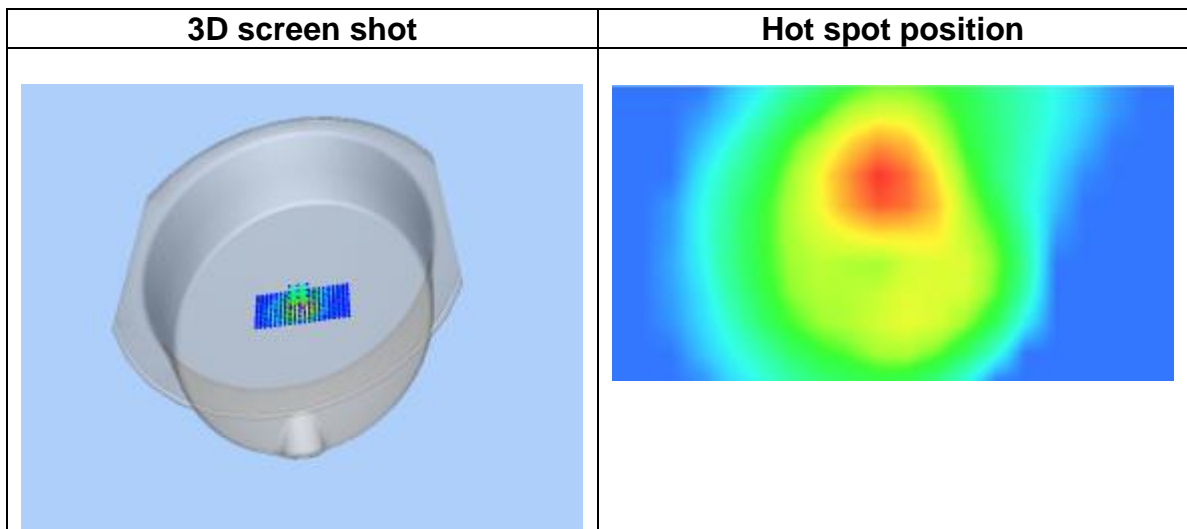
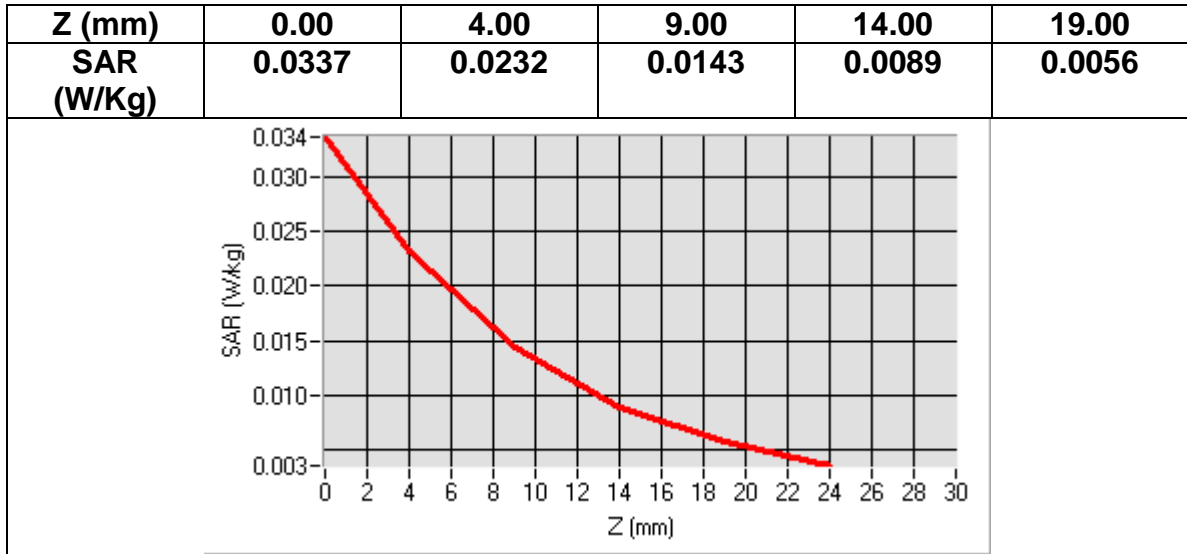
Area Scan	<u>dx=8mm dy=8mmh= 5.00 mm</u>
Zoom Scan	<u>7x7x7,dx=5mm dy=5mm dz=5mm, dx=8mm dy=8mm, h= 5.00 mm</u>
Phantom	<u>ELLI16</u>
Device Position	<u>Bottom</u>
Band	<u>Band5 WCDMA850+HSPA</u>
Channels	<u>Middle</u>
Signal	<u>WCDMA (Crest factor: 1.0)</u>

Frequency (MHz)	836.400024
Relative permittivity (real part)	55.195690
Relative permittivity (imaginary part)	20.911938
Conductivity (S/m)	0.971708
Variation (%)	-0.430000



Maximum location: X=-2.00, Y=15.00
SAR Peak: 0.04 W/kg

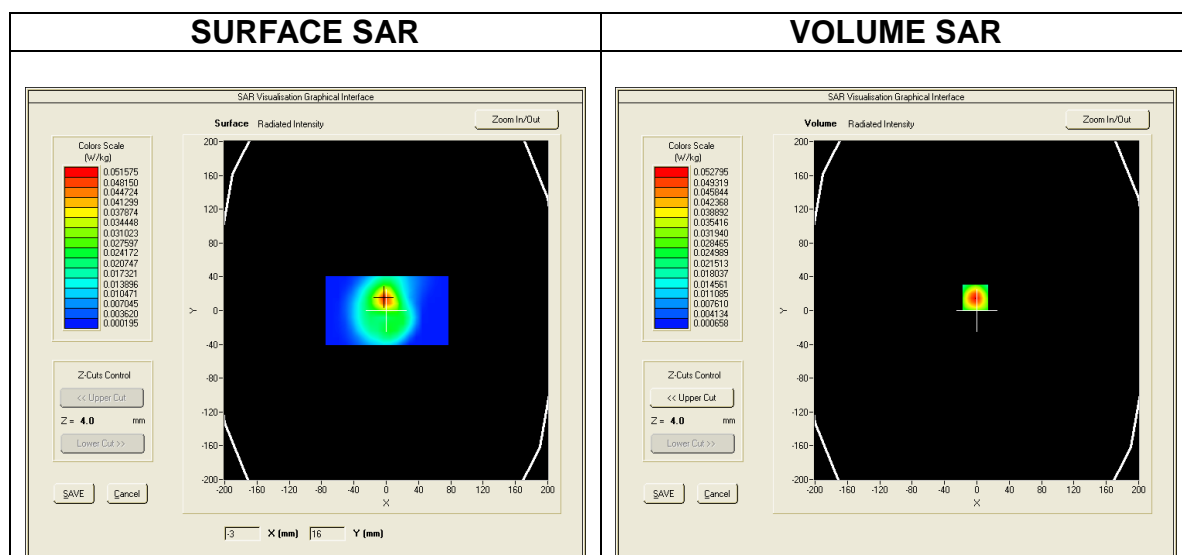
SAR 10g (W/Kg)	0.014187
SAR 1g (W/Kg)	0.023413



MEASUREMENT 10
Date of measurement: 2016/07/05

Area Scan	<u>dx=8mm dy=8mmh= 5.00 mm</u>
Zoom Scan	<u>7x7x7,dx=5mm dy=5mm dz=5mm, dx=8mm dy=8mm, h= 5.00 mm</u>
Phantom	<u>ELLI16</u>
Device Position	<u>Back</u>
Band	<u>Band5 WCDMA850+RMC</u>
Channels	<u>Middle</u>
Signal	<u>WCDMA (Crest factor: 1.0)</u>

Frequency (MHz)	836.400024
Relative permittivity (real part)	55.195690
Relative permittivity (imaginary part)	20.911938
Conductivity (S/m)	0.971708
Variation (%)	0.760000



Maximum location: X=-18.00, Y=-13.00
SAR Peak: 0.38 W/kg

SAR 10g (W/Kg)	0.225142
SAR 1g (W/Kg)	0.299389