

EMTAC

A2424

WLAN

PC CARD

**INSTALLTION
MENU**

FCC INFORMATION

The Federal Communication Commission Radio Frequency Interference Statement includes the following paragraph:

This equipment has been tested and found to comply with the limits for a Class B digital Device, pursuant to part 15 of the FCC Rules. These limits are designed to provide reasonable protection against harmful interference in a residential installation. This equipment generates, uses and can radiate radio frequency energy and, if not installed and used in accordance with the instruction, may cause harmful interference to radio communication.

However, there is no guarantee that interference will not occur in a particular installation. If this equipment does cause harmful interference to radio or television reception, which can be determined by turning the equipment off and on, the user is encouraged to try to correct the interference by one or more of following measures:

- Reorient or relocate the receiving antenna.
- Increase the separation between the equipment and receiver.
- Connect the equipment into and outlet on a circuit different from that to which the receiver is connected.
- Consult the dealer or an experienced radio/TV technician for help.

The user should not modify or change this equipment without written approval from EMTAC TECHNOLOGY CORP. Modification could void authority to use this equipment.

Notice

The information in this document is subject to change in order to improve reliability, design, or function without prior notice and does not represent a commitment on the part of EMTAC.

No part of this document may be reproduced or transmitted in any form or by any means without the prior written permission of EMTAC.

Trademark Acknowledgments

PRISM 2 is registered trademark of Intersil, Inc.

Microsoft Windows are registered trademarks of Microsoft Corp.

IBM and Thinkpad are a registered trademark s of International Business Machines Corp.

All other product names or trademarks are property of their respective owners. Product and cooperate names mention in this publication are used for identification purpose only.

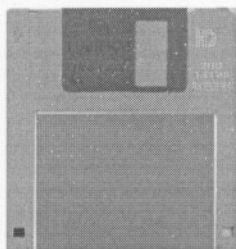
Package Contents

The package should contain following items:

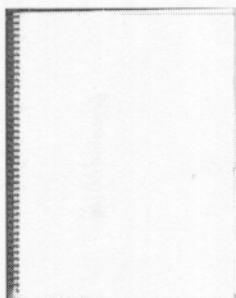
1. The EMTAC A2424 11Mbps WLAN PC Card.



2. The driver disk.



3. This User's Guide.



Software Installation Guide

Run the program "Setup.exe" in driver disk, in Win95/98. Then follow the instructions shown on the windows, you can setup the adapter to work correctly.

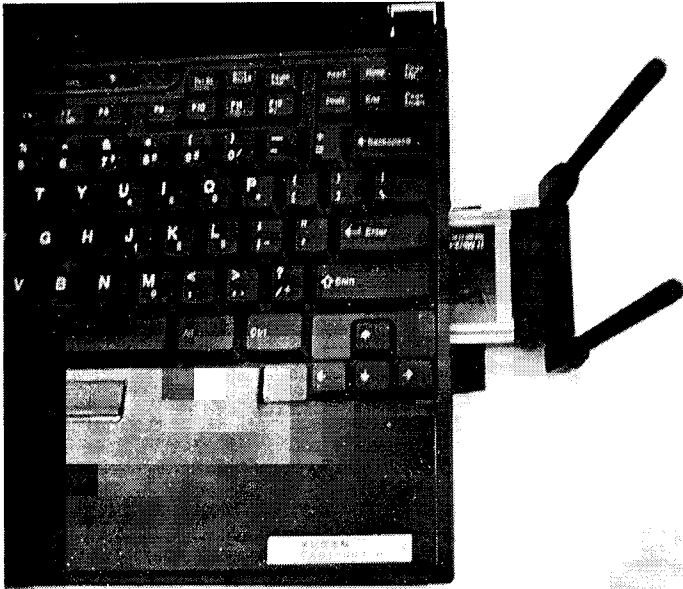
Notice: If you have an Access Point and want to setup your adapter in infrastructure mode, you just must know your **SSID** of your wireless LAN prior. Otherwise, must have the **SSID** and **channel** number in ad-hoc mod, the same with who you want to communicate.

Be Caution: Install this software before you install the hardware !!

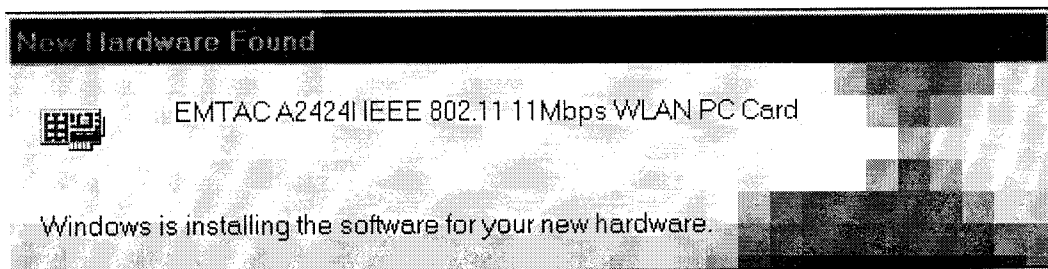
Hardware Installation Guide

Step1 –Turn on the Notebook/Desktop PC, and boot-up with Win95/98.

Step2 – Insert the EMTAC A2424 11Mbps WLAN PC Card into one of the Notebook/Desktop PC build-in PAMCIA slots.



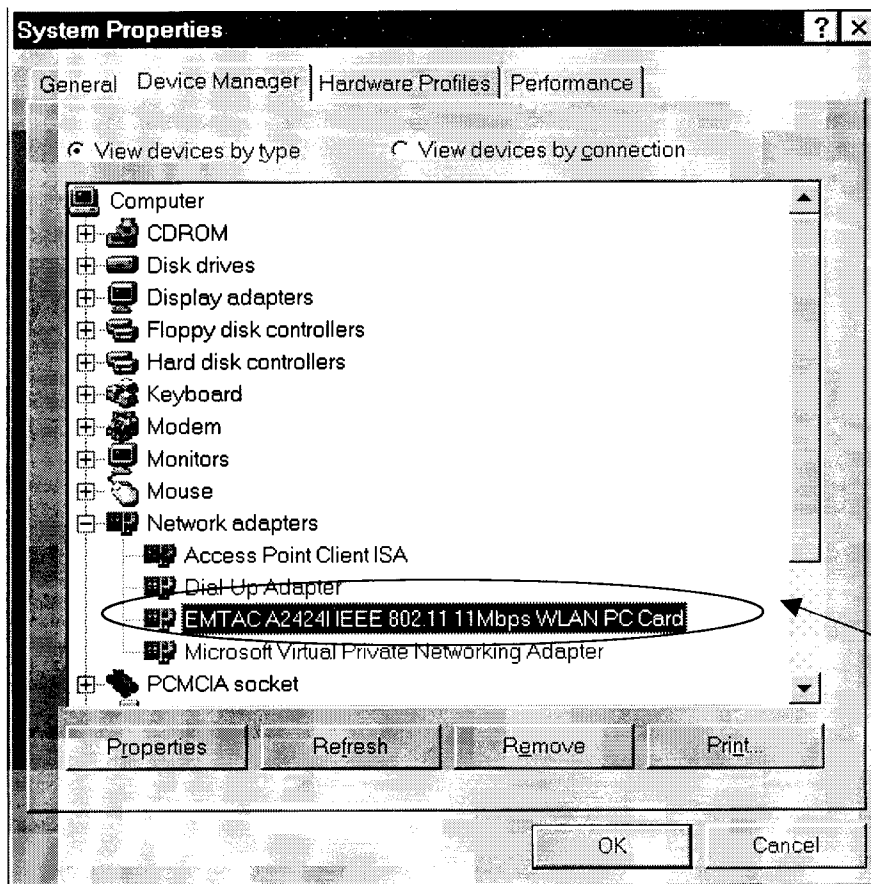
Step3 –The windows98/95 will show the message as below to indicate that there is a new device found.



You don't have to do anything in the rest of time. But sometimes, it will need some window system files. You just show it where can find you original Winodw95/98 files.

Step4 –Wait a moment, window98/95 will show that it has finished the installation of EMTAC A2424 11Mbps WLAN PC Card.

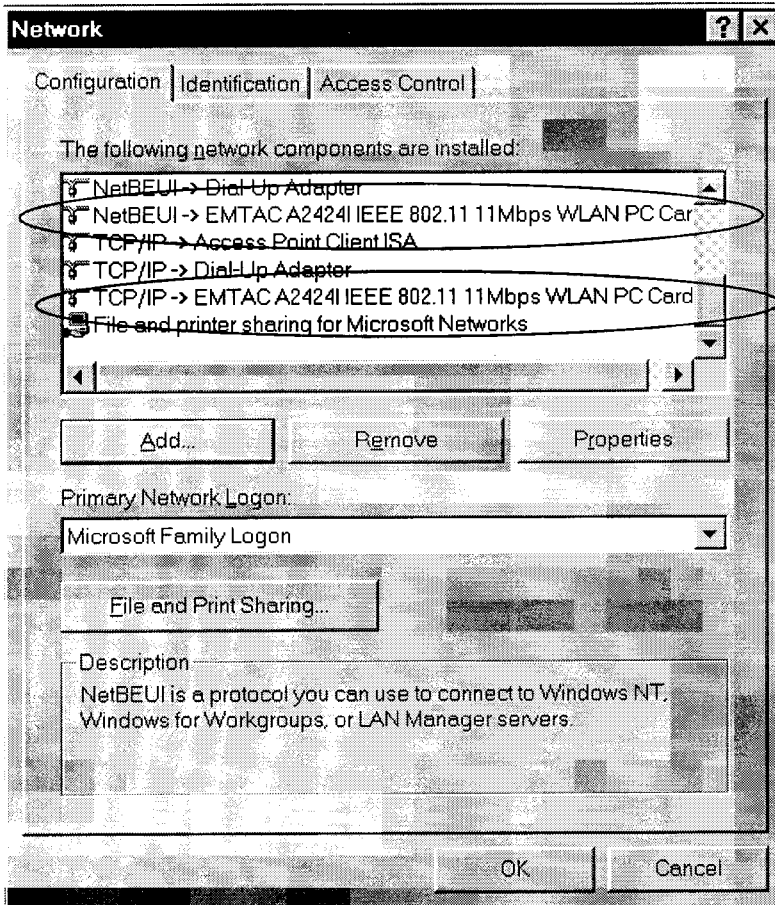
Step5 –Next, go to the “control panel” -> “system” -> “device manage”, you will see something like below.



If you don't see exclamation mark on the icon of “EMTAC A2424 IEEE 802.11 11Mbps WLAN PC Card”, it means O.K.

In general, you want to see your network neighbors , it's better has both of TCP/IP and NetBEUI network components included in you window's network configuration.

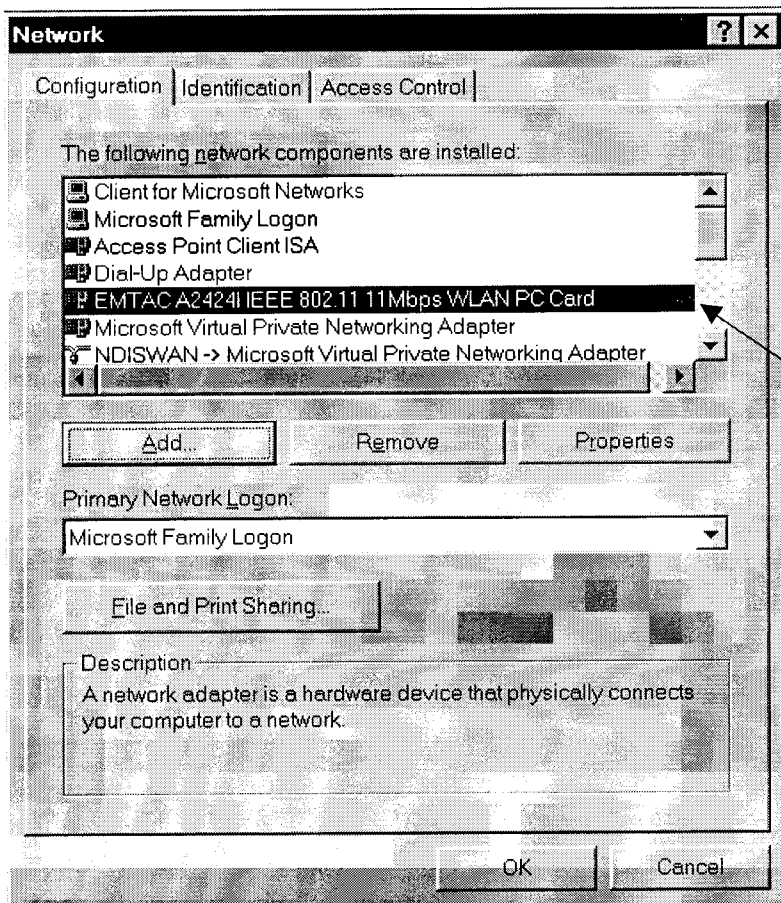
In "Control panel"->"network"->"configuration", you should look both, just like below.



Setting up your LAN card

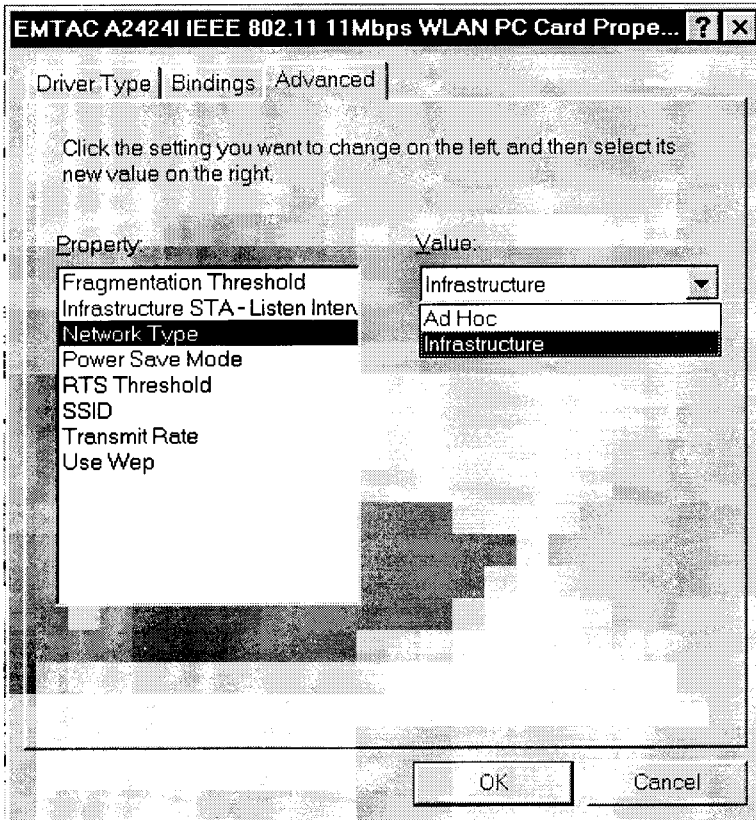
If you had installed your wireless LAN card, and you want to change your network setting. You can do as follow...

Step1 –In your Win95/98, go to “control panel”->”network”, which will show as following.

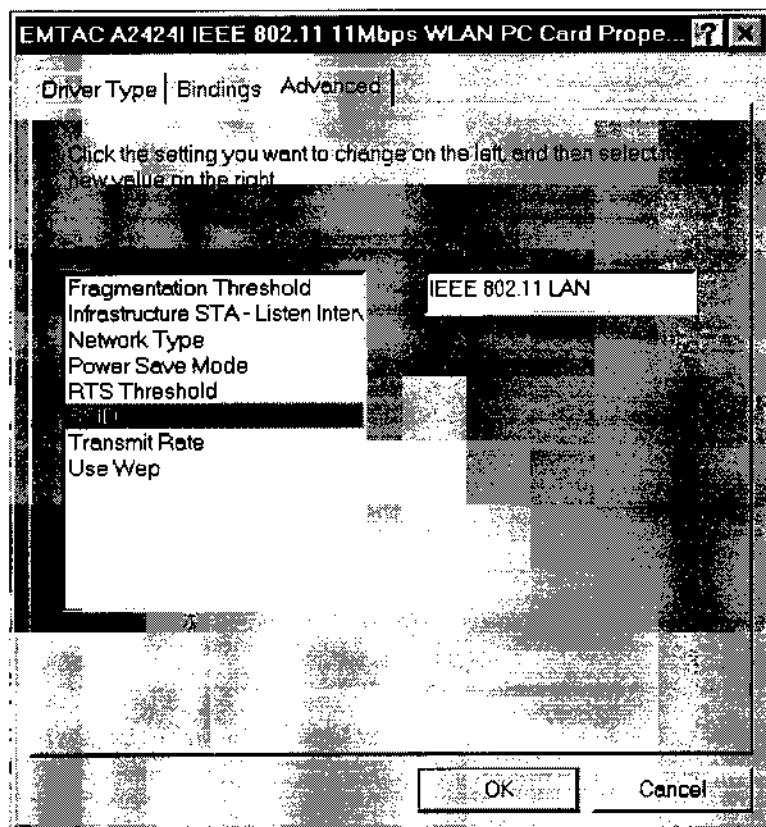


Double clicks on the item of “EMTAC A2424 IEEE802.11 11Mbps WLAN PC Card” to set up your adapter.

Step2 –Click on the item of “Network Type” in the “Property” filed, to determine your network type is either “infrastructure” or “Ad Hoc”, which will show in the field of “Value”.



Step3 –Click on the item of “SSID” in the “Property” filed, to determine your network name(or so called Service Set ID) in the field of “Value”.



Note: When setting the SSID, you must make sure your network type is either Infrastructure or Ad-Hoc.

- 1. In Infrastructure mode, the SSID must be the same with the SSID of your Access Point.**
- 2. In Ad-Hoc mod, the SSID must be the same with who you want to group with, and can not be duplicate with other network group**

Step5 –Click on the item of “Channel” in the “Property” filed, to determine you ad-hoc mode’s channel. This is only useful in ad-hoc mode. **Don’t try to setup channel in infrastructure mode.** It’s determined by your Access Point.

