

**PHOTOGRAPHS OF THE INTERIOR OF A
DCD: Part 15 Low Power Transmitter below 1705 kHz,
OPERATING on 125 kHz,
BRAND MYLAPS, MODEL X2 Prochip Decoder.**

15020602.p01
May 12, 2015

FCC listed : 90828
Industry Canada : 2932G-2
R&TTE, LVD, EMC Notified Body : 1856

TÜV Rheinland Nederland B.V.
Eiberkamp 10
9351VT Leek
The Netherlands

Telephone: +31 594 505005
Telefax: +31 594 504804
Internet: www.tuv.com/nl
E-mail: info@tuv-eps.com



Description of test item

Test item : DCD: Part 15 Low Power Transmitter below 1705 kHz
Manufacturer : MYLAPS BV
Brand : MYLAPS
Model(s) : X2 Prochip Decoder
Serial number(s) : 00-04-87-06-05-78
Revision : --
FCC ID : NXYX2PROCHIPD
IC : Not Applicable
Receipt date : April 08, 2015

Applicant information

Applicant's representative : Bas van Rens
Company : MYLAPS
Address : Zuiderhoutlaan 4
Postal code : 2012PJ
City : Haarlem
Country : Netherlands
Telephone number : +31 (0)23 7600100
Telefax number : --
E-mail : Bas.van.rens@mylaps.com

Report written by : R. van der Meer

Report date : May 12, 2015



Table of contents

1.1	INTERNAL VIEW 1, TOP COVER REMOVED.....	4
1.2	INTERNAL VIEW 2, PCB AS MOUNTED IN THE UNIT	5
1.3	INTERNAL VIEW 2, PCB REMOVED FROM HOUSING	6
1.4	INNER ASSEMBLY, PCB VIEW.....	7
1.4.1	<i>PCB view, component side</i>	<i>7</i>
1.4.2	<i>PCB view, front side, zoom in to the transmitter part</i>	<i>8</i>
1.4.3	<i>PCB view - Rear side</i>	<i>9</i>
1.4.4	<i>PCB view - Rear side, detail on pcb version info</i>	<i>10</i>

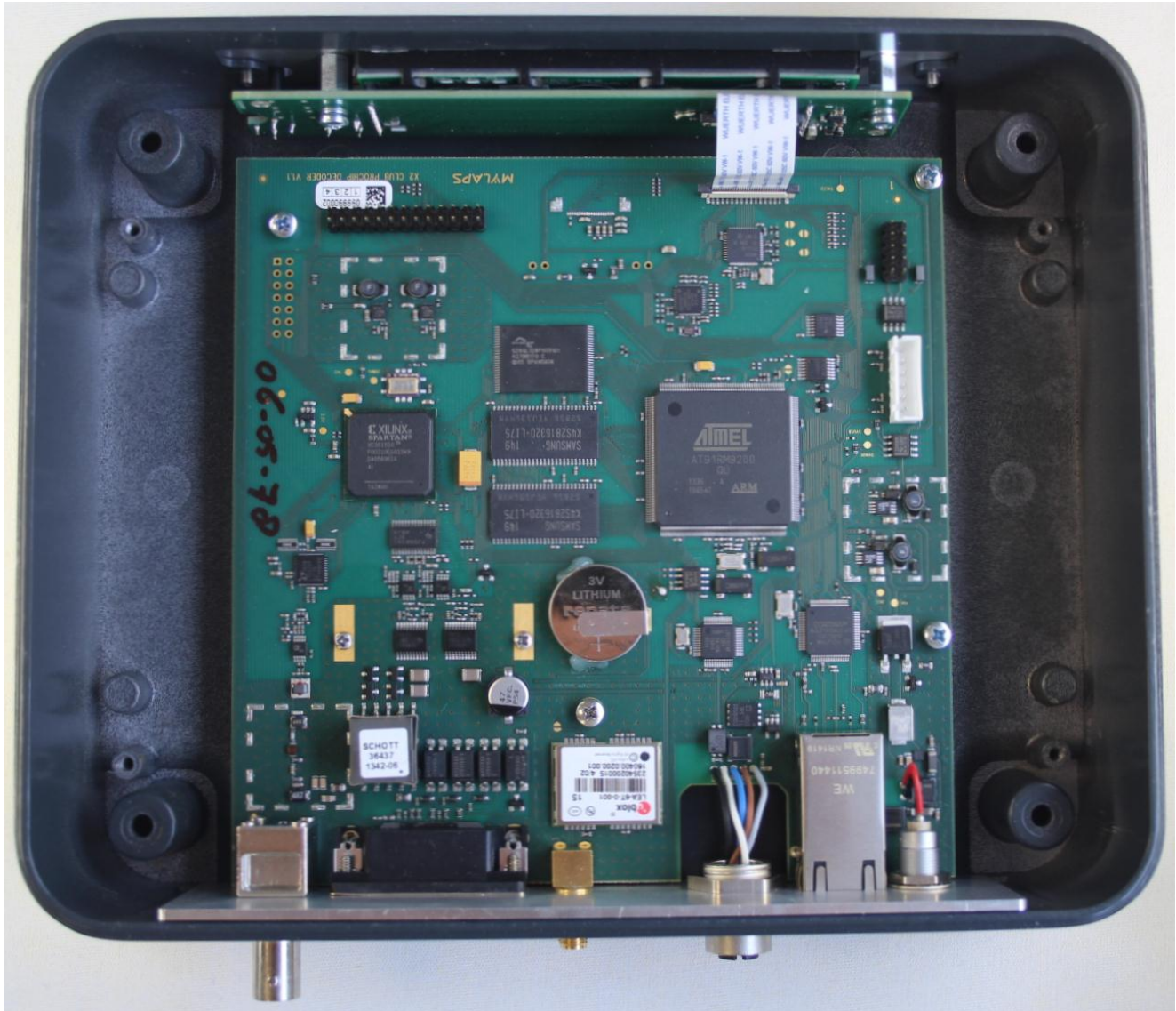


1.1 Internal view 1, top cover removed.



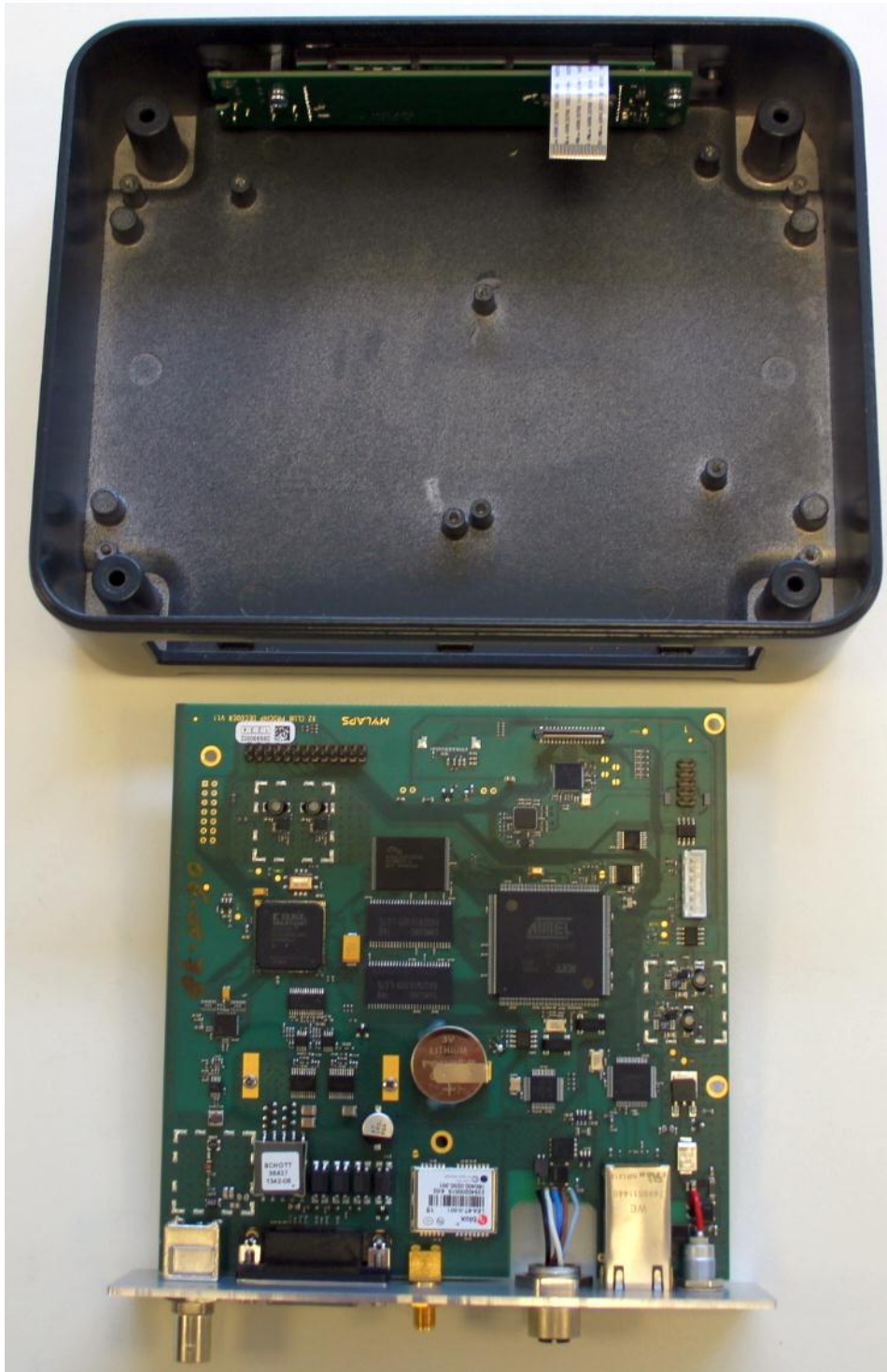


1.2 Internal view 2, PCB as mounted in the unit





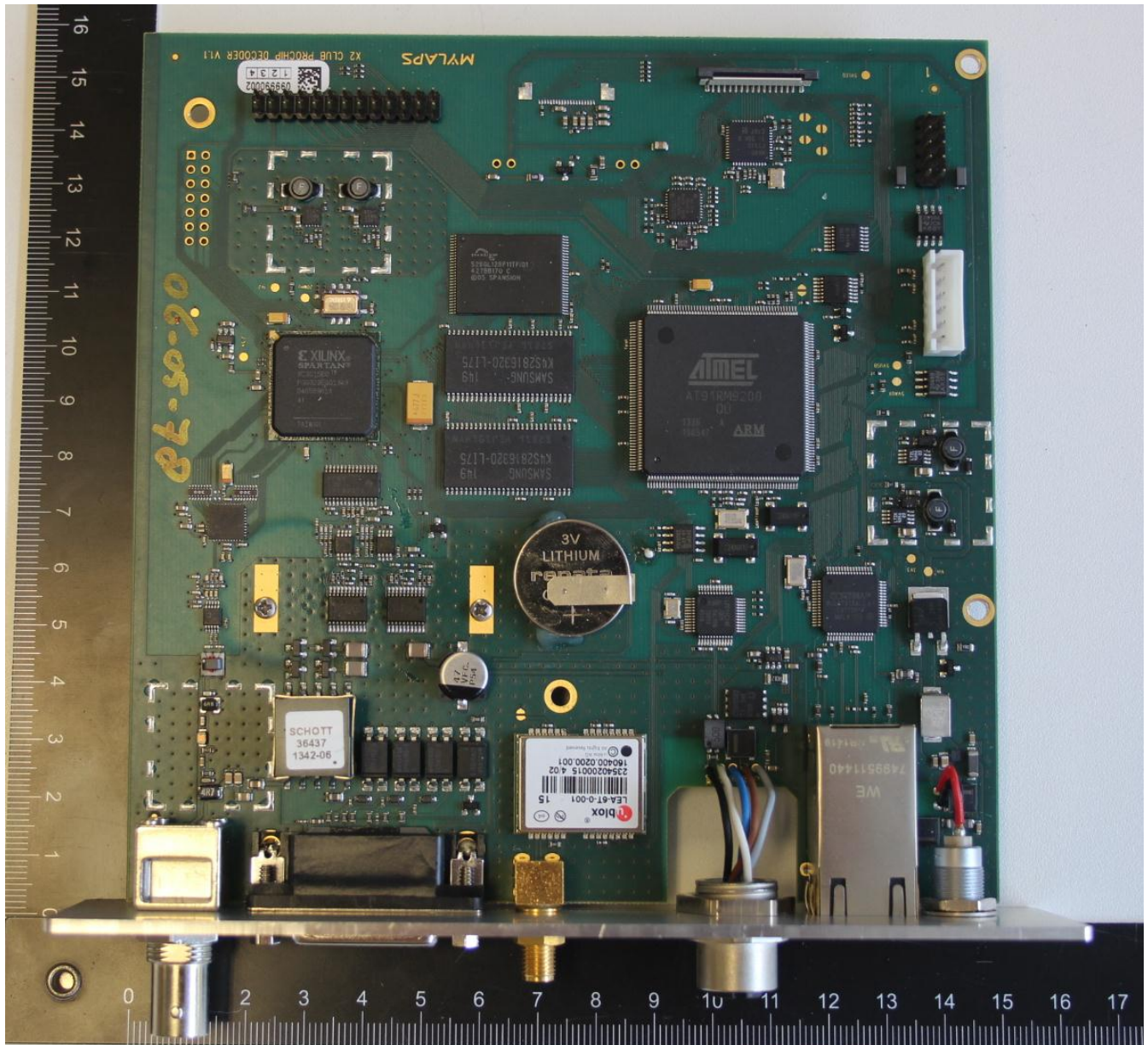
1.3 Internal view 2, PCB removed from housing





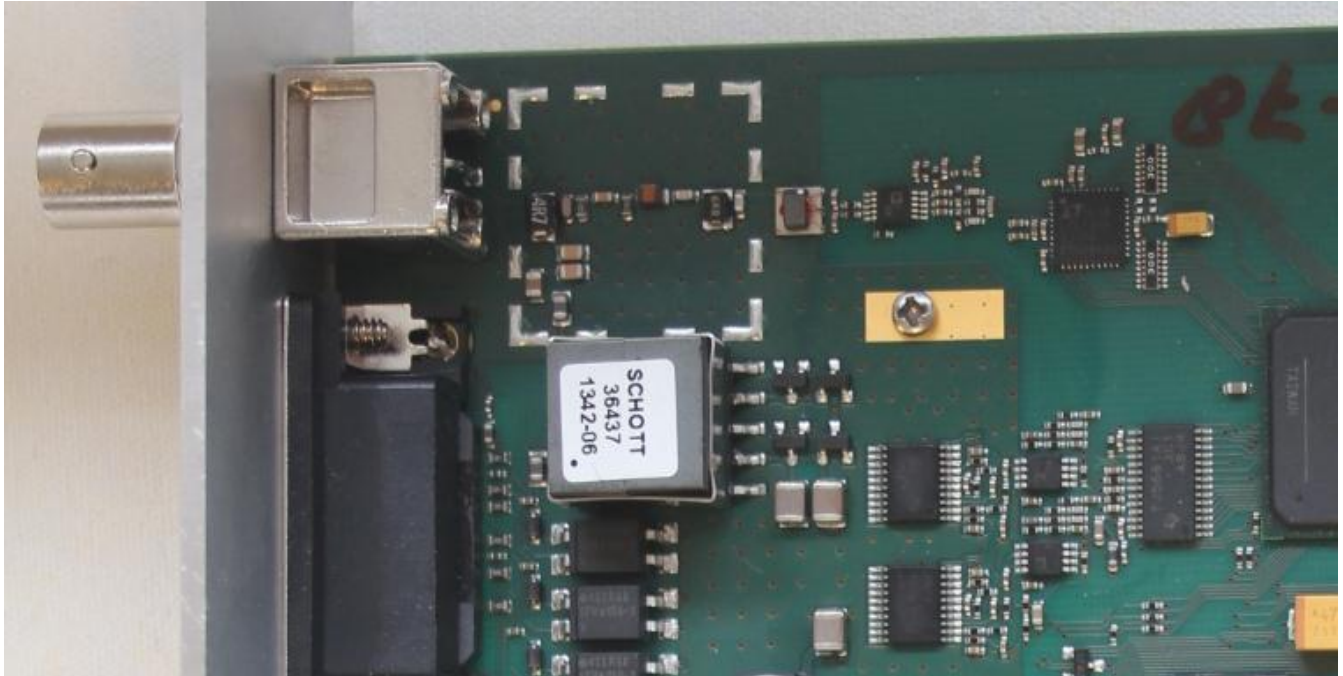
1.4 Inner assembly, PCB view

1.4.1 PCB view, component side



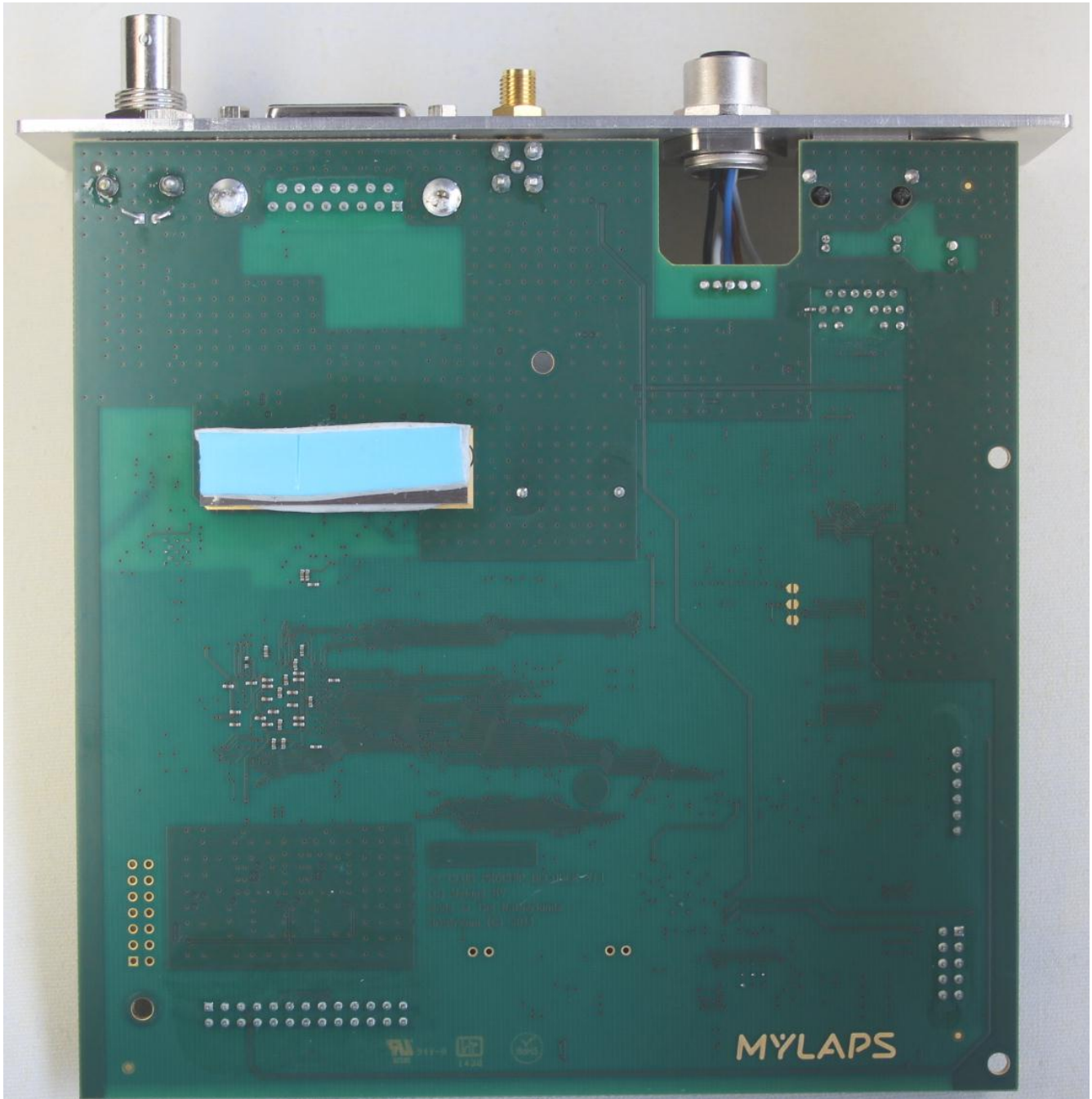


1.4.2 PCB view, front side, zoom in to the transmitter part





1.4.3 PCB view - Rear side





1.4.4 PCB view - Rear side, detail on pcb version info

