

**PHOTOGRAPHS OF THE INTERIOR OF A
DXX: Part 15 Low Power Device Transmitter,
OPERATING on 3.59 MHz,
BRAND MYLAPS, MODEL X2 Transponder.**

**15091401.p01
October 04, 2016**

FCC listed : 90828
Industry Canada : 2932G-2
:

TÜV Rheinland Nederland B.V.
Eiberkamp 10
9351VT Leek
The Netherlands

Telephone: +31 594 505005
Telefax: +31 594 504804
Internet: www.tuv.com/nl
E-mail: products@nl.tuv.com



Description of test item

Test item : DXX: Part 15 Low Power Device Transmitter
Manufacturer : MYLAPS BV
Brand : MYLAPS
Model(s) : X2 Transponder (MX, Kart and Car/Bike)
Serial number(s) : MX= 7882356, Kart= 9013607 and Car/Bike=5133630
Revision : --
FCC ID : NXYX2CLUBTX
IC : Not Applicable
Receipt date : October 26, 2015

Applicant information

Applicant's representative : Bas van Rens
Company : MYLAPS
Address : Zuiderhoutlaan 4
Postal code : 2012PJ
City : Haarlem
Country : Netherlands
Telephone number : +31 (0)23 7600100
Telefax number : --
E-mail : Bas.van.rens@mylaps.com

Report written by : R. van der Meer

Report date : October 04, 2016

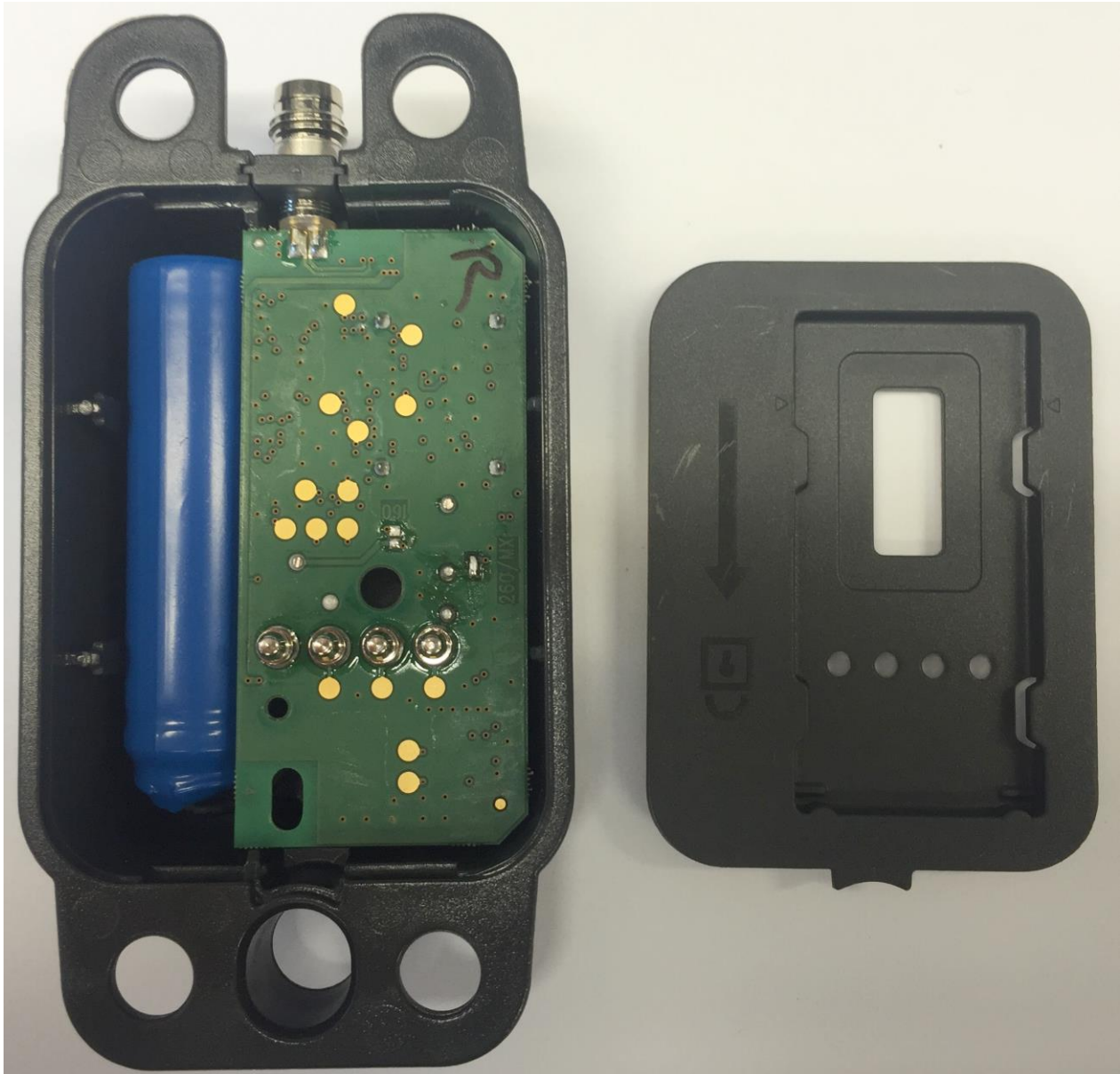


Table of contents

1.1	CAR/BIKE INTERNAL VIEW 1, TOP COVER REMOVED.	4
1.2	KART INTERNAL VIEW 1, TOP COVER REMOVED.....	5
1.3	MX INTERNAL VIEW 1, TOP COVER REMOVED.	6
1.4	INTERNAL VIEW 2, PCB ASSEMBLY A REMOVED FROM THE UNIT.....	7
	ASSEMBLY IS EXACTLY EQUAL FOR ALL 3 MODELS, THEREFOR ONLY ONE SHOWN.	7
1.5	INTERNAL VIEW 2, PCB SIDE VIEWS	8
1.6	INNER ASSEMBLY, PCB VIEW	10
1.6.1	<i>PCB view, component side, antenna and shield removed.</i>	<i>10</i>
1.6.2	<i>PCB view, front side, zoom in to the transmitter part.....</i>	<i>11</i>
1.6.3	<i>PCB view - Rear side</i>	<i>12</i>

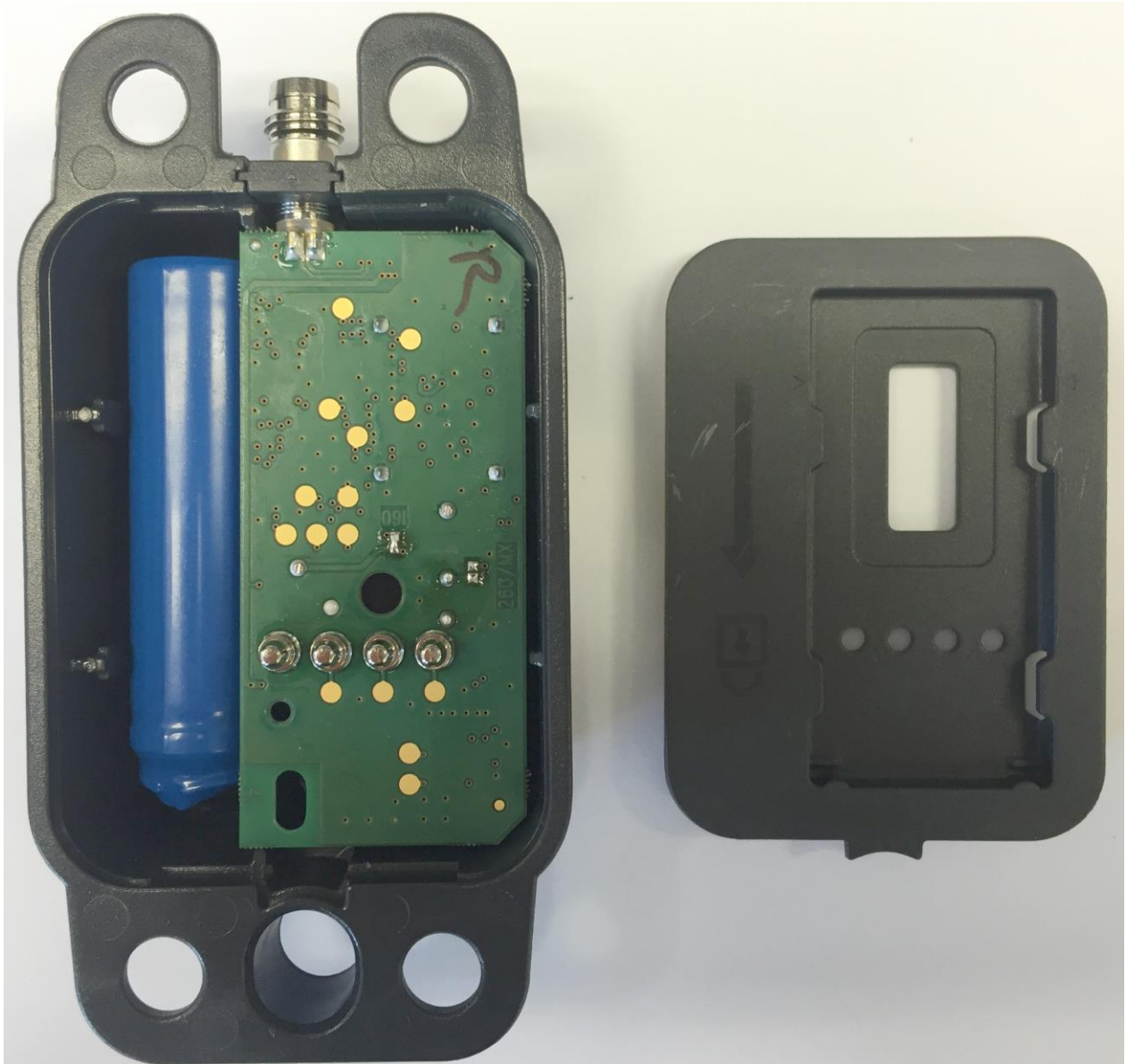


1.1 Car/Bike Internal view 1, top cover removed.



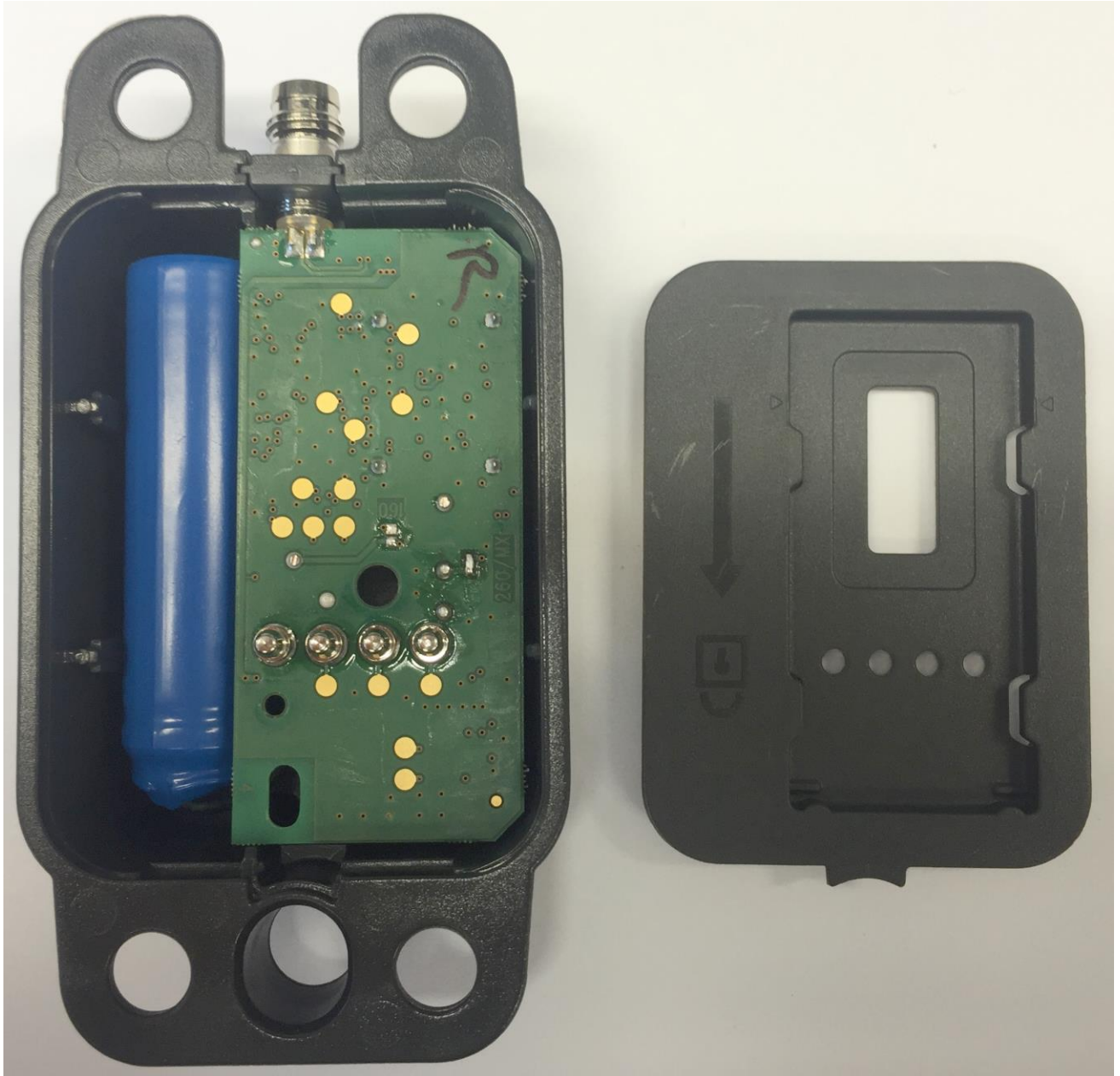


1.2 Kart Internal view 1, top cover removed.



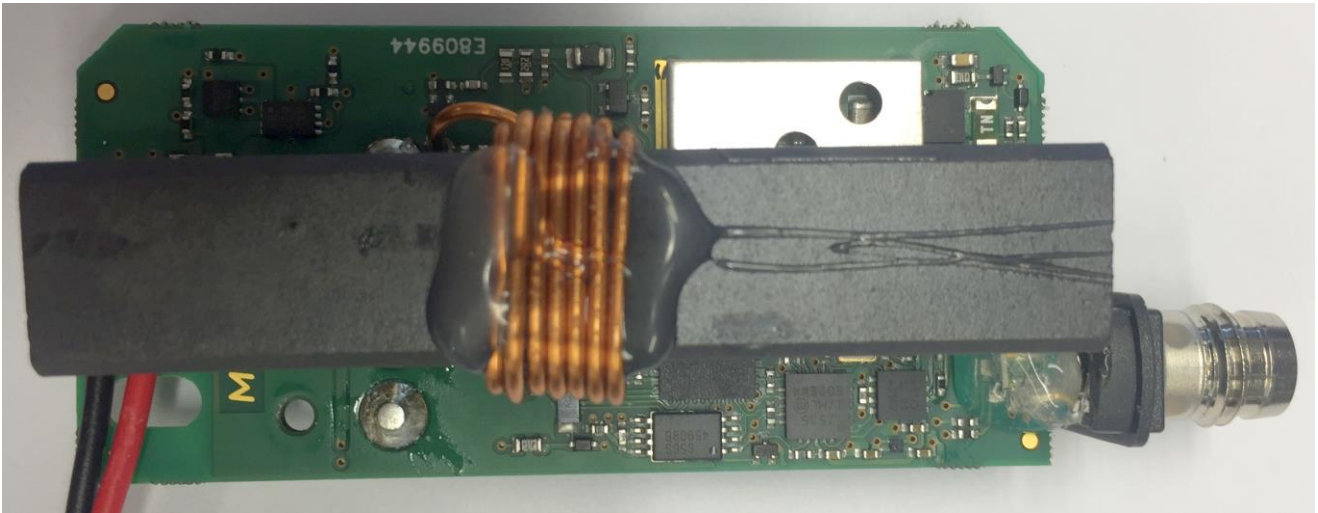


1.3 MX Internal view 1, top cover removed.



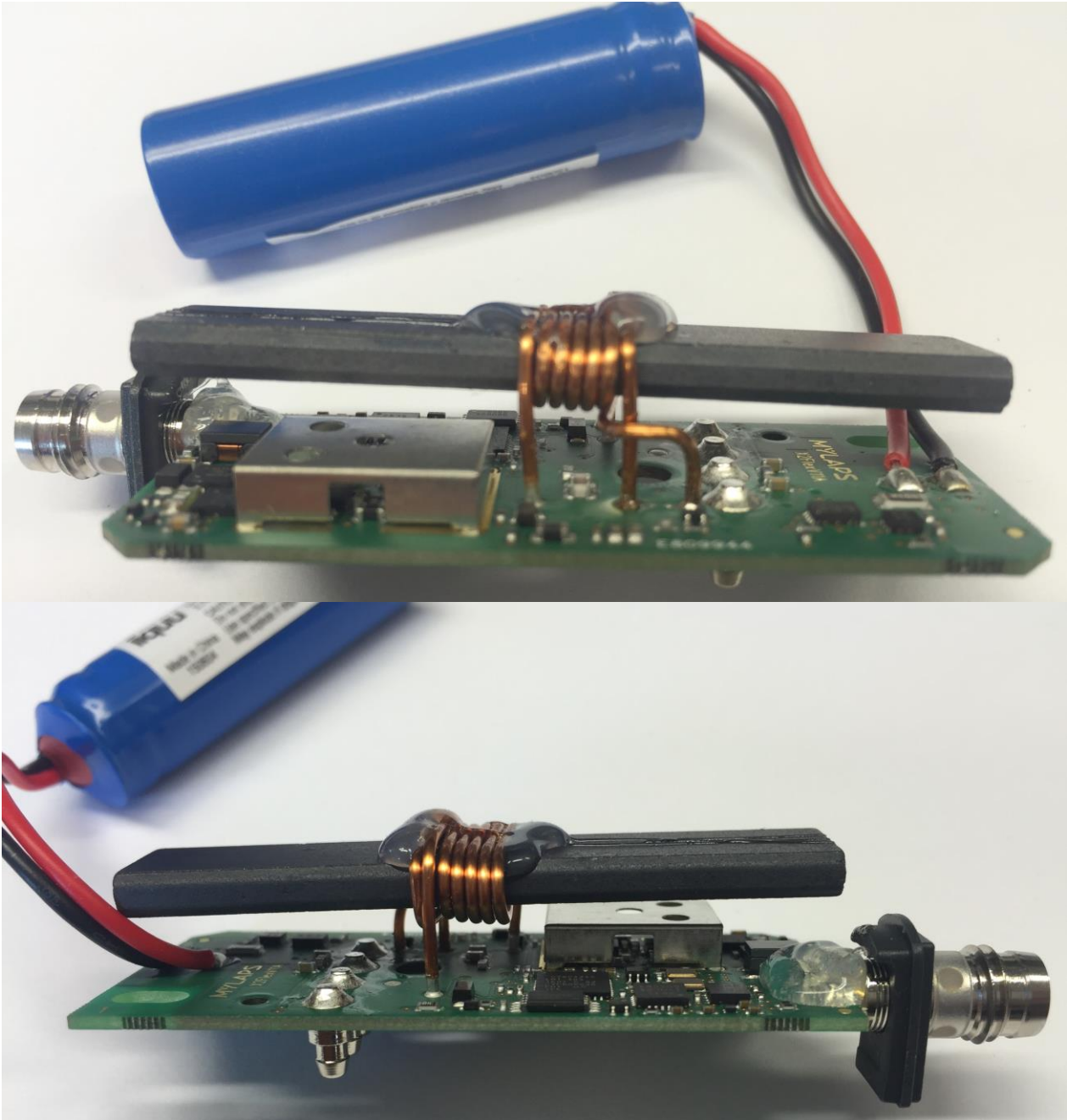
1.4 Internal view 2, PCB assembly a removed from the unit

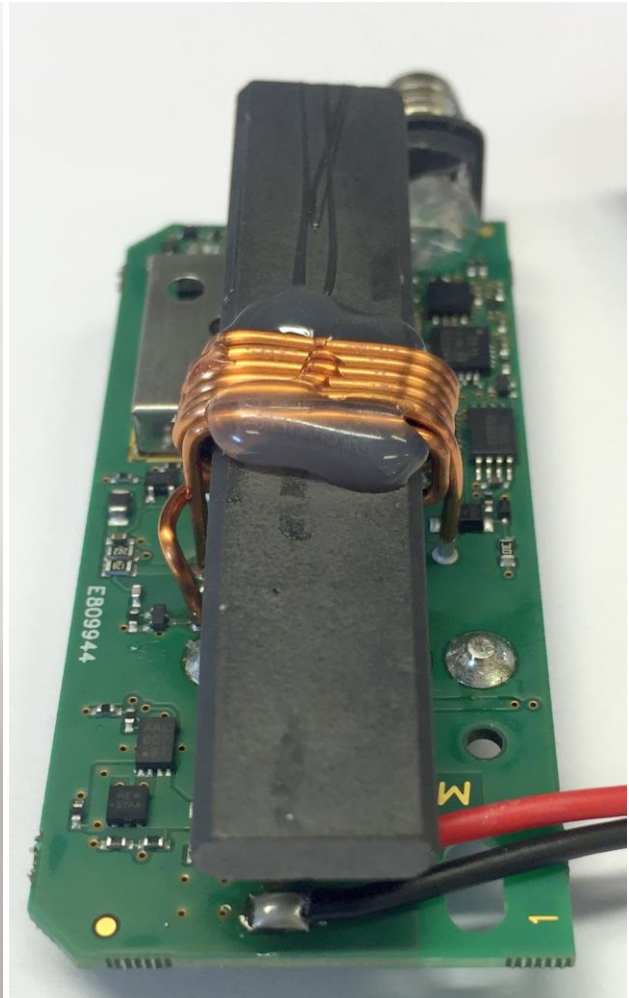
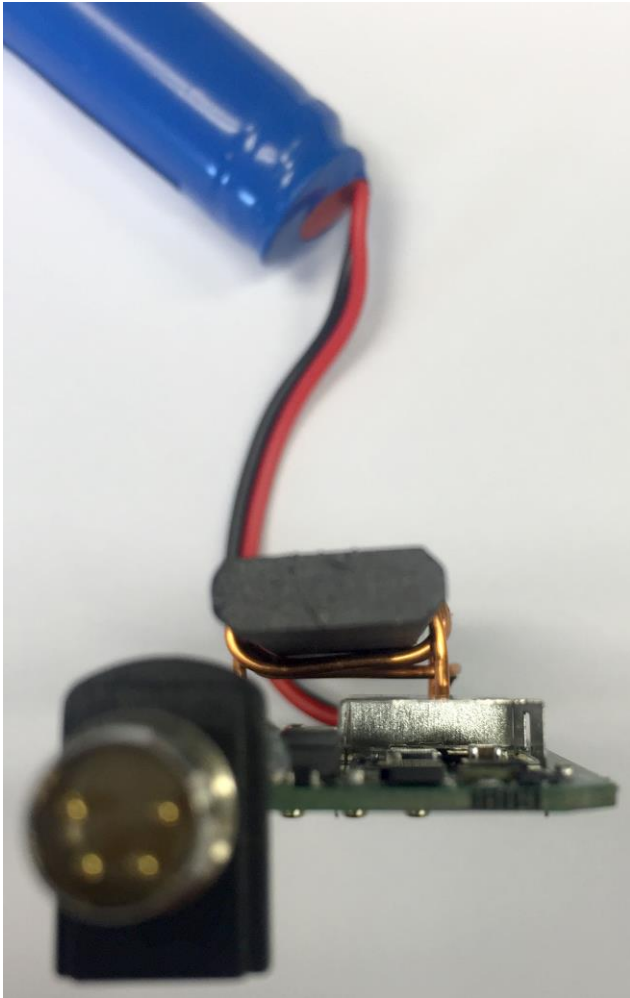
assembly is exactly equal for all 3 models, therefor only one shown.





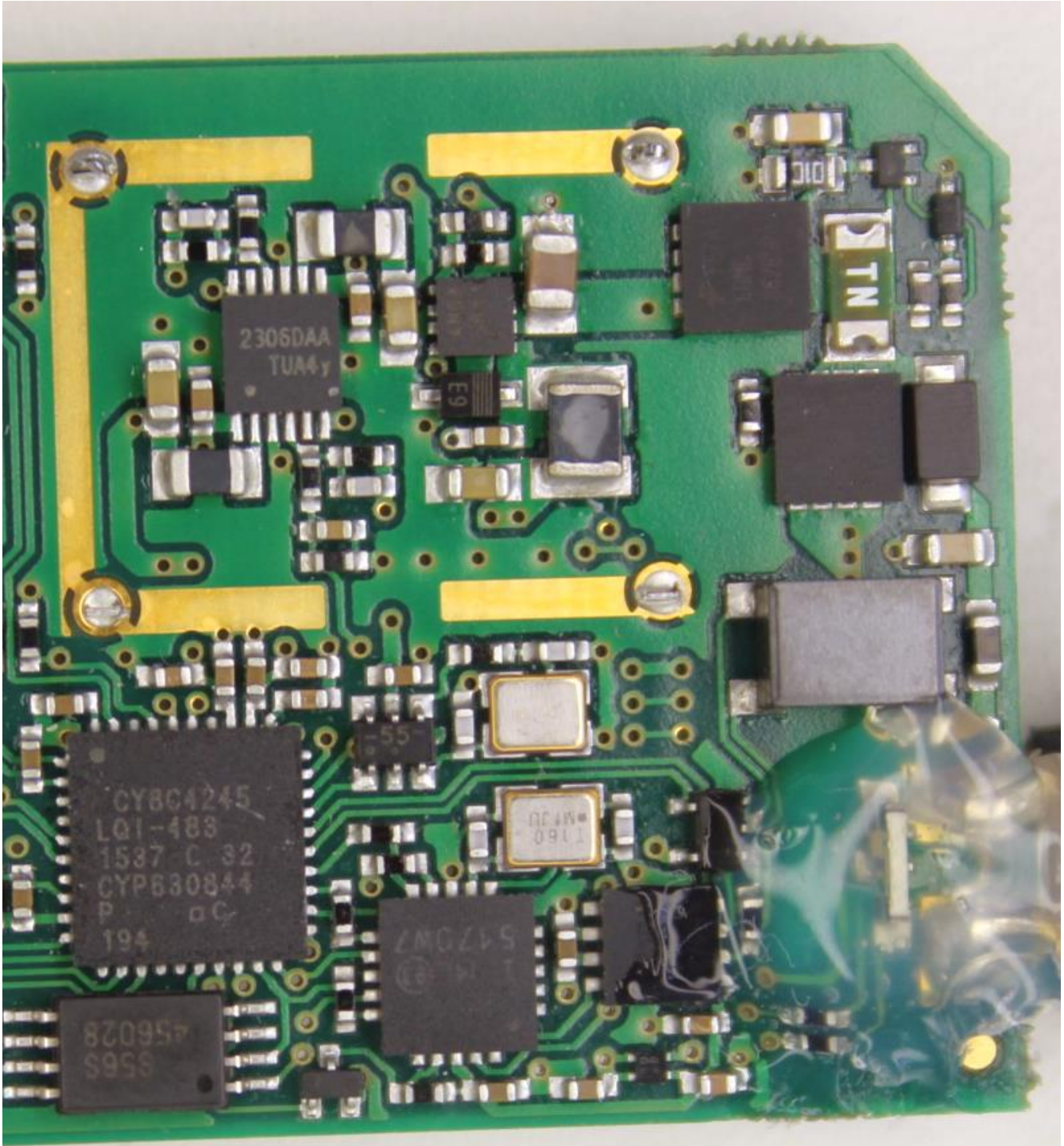
1.5 Internal view 2, PCB side views







1.6.2 PCB view, front side, zoom in to the transmitter part





1.6.3 PCB view - Rear side

