

EXHIBIT 8 TEST SETUP

Contents

- Test setup for TranX 120 (radiated emission measurements, front/back)**
- Test setup for TranX 160 (radiated emission measurements, front/back)**
- Test setup for TranX 260 (radiated emission measurements, front/back)**
- Test setup for TranX 260/TranX decoder (radiated emission measurements, front/back)**
- Test setup for TranX 260/TranX decoder (conducted emission measurements, front/back)**



Test setup for TranX 120 (front, radiated emission measurements)



Test setup for TranX 120 (back, radiated emission measurements)



Test setup for TranX 160 (front, radiated emission measurements)



Test setup for TranX 160 (back, radiated emission measurements)



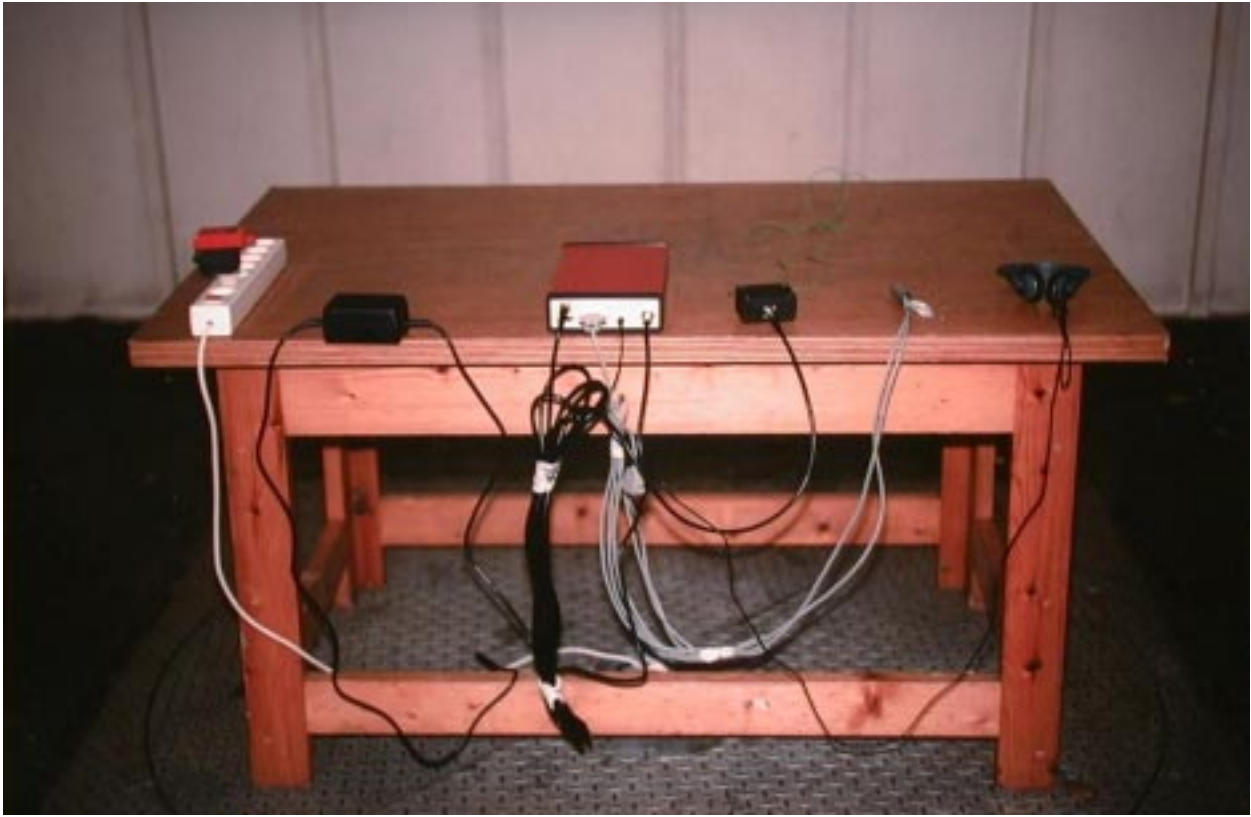
Test setup for TranX 260 (front, radiated emission measurements)



Test setup for TranX 260 (back, radiated emission measurements)



Test setup for TranX 260 and TranX decoder (front, radiated emission measurements)



Test setup for TranX 260 and TranX decoder (back, radiated emission measurements)



Test setup for TranX 260 and TranX decoder (front, conducted emission measurements)



Test setup for TranX 260 and TranX decoder (back, conducted emission measurements)