

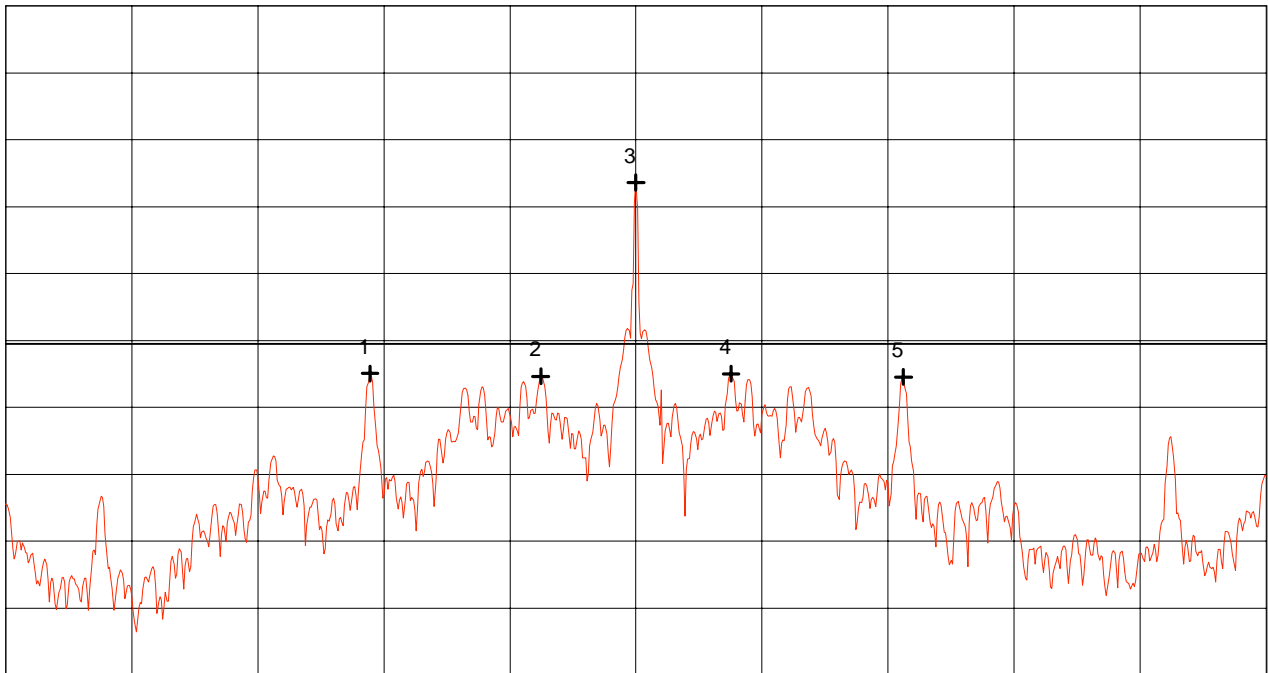
Radiated emission at band edges acc. to FCC Part 15 Subpart C, §15.225(b)

Model: SLG 70 Ant. 1	Mode: - reading transponder E 611 continuously - nominal operating frequency 13.56 MHz
Serial No.: ---	- with nominal supply voltage 24 V DC - environmental temperature +20°C
Applicant: Siemens AG	Limits: 13.553 - 13.567 MHz: 80.0 dB μ V/m outside the band: 29.5 dB μ V/m
	Note: Prescan for information only!

Ref.Level 80 dB μ V/m
10 dB dB/Div.

ATT 35 dB

Ref. Offset -52 dB



Start 13.060 MHz
RBW 1 kHz

VBW 10 kHz

Stop 14.060 MHz
SWP 3 s

**** Multi Marker ****		

Nr.1	13.348889 MHz	25.05 dB μ V/m
Nr.2	13.484444 MHz	24.65 dB μ V/m
Nr.3	13.560000 MHz	53.60 dB μ V/m
Nr.4	13.635556 MHz	25.03 dB μ V/m
Nr.5	13.772222 MHz	24.55 dB μ V/m
Nr.6		
Nr.7		
Nr.8		

Tested by: Rainer Heller	Project-No.: 51905-80638
Date: 12/14/1999	Page of pages

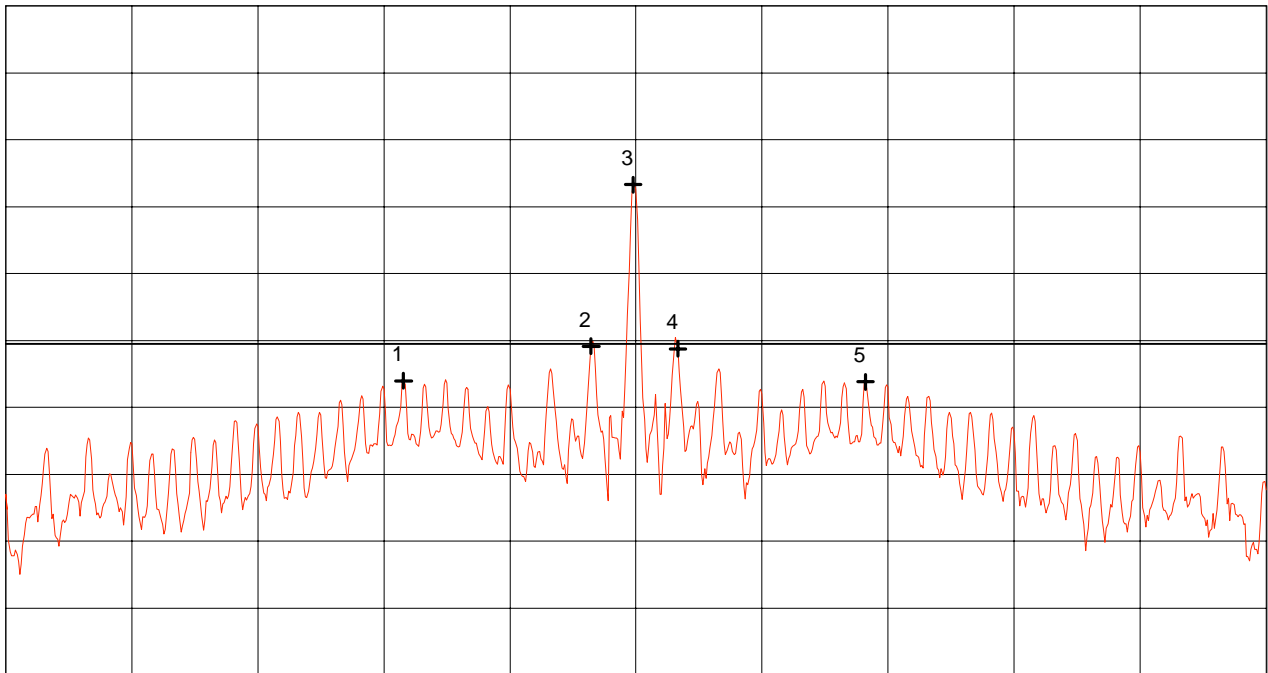
Radiated emission at band edges acc. to FCC Part 15 Subpart C, §15.225(b)

Model: SLG 70 Ant. 1	Mode: - reading transponder E 611 continuously - nominal operating frequency 13.56 MHz
Serial No.: ---	- with nominal supply voltage 24 V DC - environmental temperature +20°C
Applicant: Siemens AG	Limits: 13.553 - 13.567 MHz: 80.0 dB μ V/m outside the band: 29.5 dB μ V/m
	Result: Limits kept

Ref.Level 80 dB μ V/m
10 dB dB/Div.

ATT 35 dB

Ref. Offset -52 dB



Start 13.540 MHz
RBW 100 Hz

VBW 10 kHz

Stop 13.580 MHz
SWP 12 s

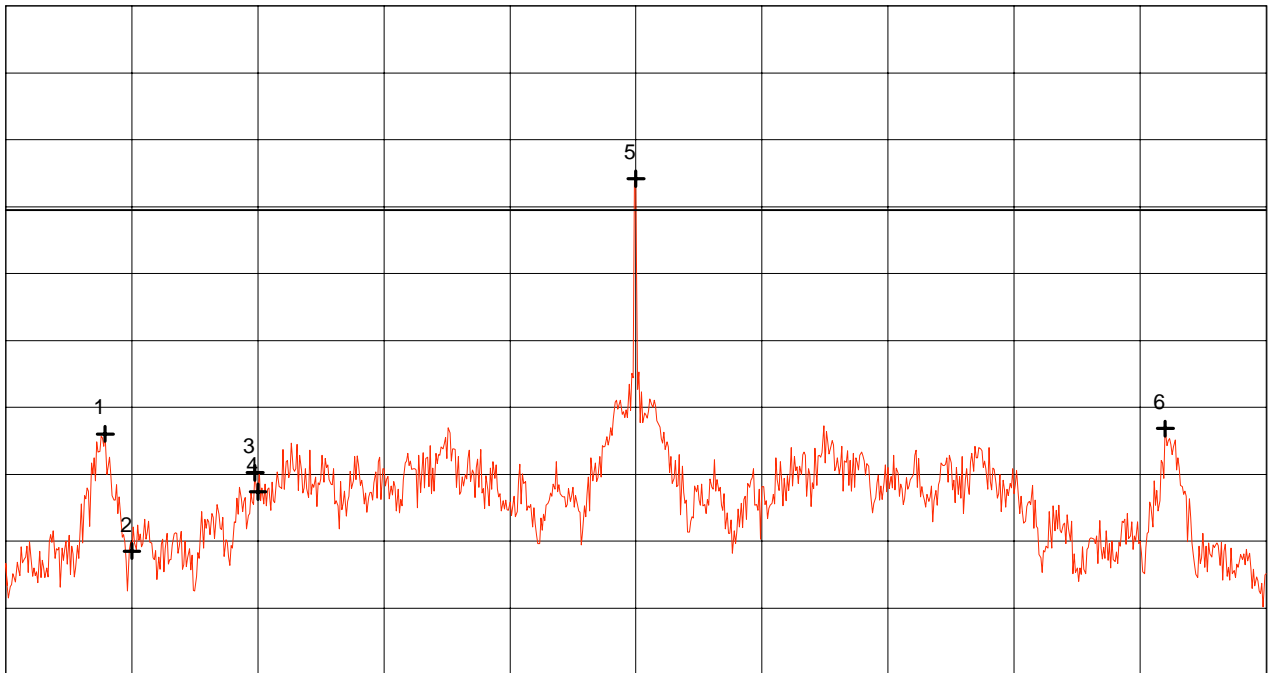
**** Multi Marker ****		
Nr.	Frequency (MHz)	Amplitude (dB μ V/m)
Nr.1	13.552622 MHz	23.96 dB μ V/m
Nr.2	13.558578 MHz	29.14 dB μ V/m
Nr.3	13.559911 MHz	53.29 dB μ V/m
Nr.4	13.561333 MHz	28.76 dB μ V/m
Nr.5	13.567289 MHz	23.81 dB μ V/m
Nr.6		
Nr.7		
Nr.8		

Tested by: Rainer Heller	Project-No.: 51905-80638
Date: 12/14/1999	Page of pages

Radiated emission at band edges acc. to FCC Part 15 Subpart C, §15.225(b)

Model: SLG 70 Ant. 1	Mode: - reading transponder E 611 continuously - nominal operating frequency 13.56 MHz - with nominal supply voltage 24 V DC
Serial No.: ---	Test distance: 3 meters Test environment: shielded room
Applicant: Siemens AG	Limits: 13.553 - 13.567 MHz: 120.0 dB μ V/m outside the band: 69.5 dB μ V/m
	Note: limits converted from 30 to 3 meters by using correction factor 40 dB / decade

Ref.Level 100 dB μ V/m ATT 10 dB Ref. Offset 20 dB
10 dB dB/Div.



Start 13.310 MHz Stop 13.810 MHz
RBW 100 Hz VBW 10 kHz SWP 150 s

**** Multi Marker ****		
Nr.	Frequency (MHz)	Power (dB μ V/m)
Nr.1	13.349444 MHz	36.04 dB μ V/m
Nr.2	13.360000 MHz	18.52 dB μ V/m
Nr.3	13.408889 MHz	30.20 dB μ V/m
Nr.4	13.410000 MHz	27.38 dB μ V/m
Nr.5	13.560000 MHz	74.18 dB μ V/m
Nr.6	13.770000 MHz	36.83 dB μ V/m
Nr.7		
Nr.8		

Tested by: Rainer Heller	Project-No.: 51905-80638
Date: 12/20/1999	Page of pages

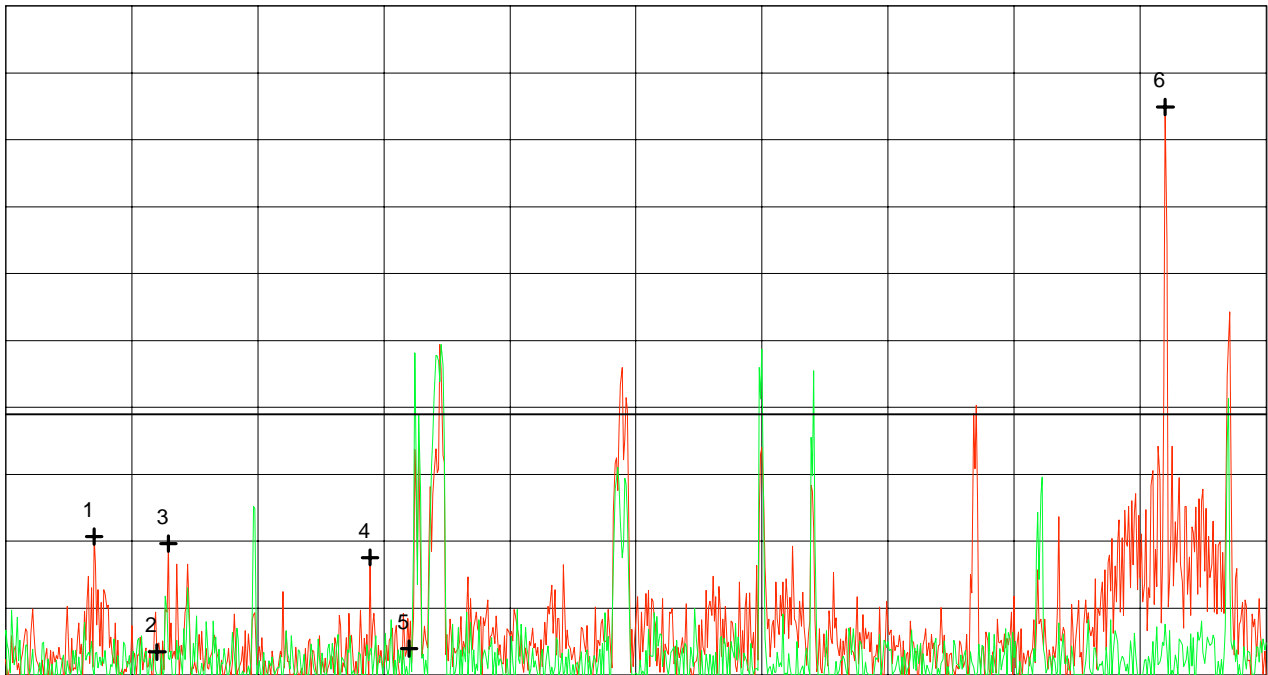
Radiated emission at band edges acc. to FCC Part 15 Subpart C, §15.225(b)

Model: SLG 70 Ant. 1	Mode: - reading transponder E 611 continuously - nominal operating frequency 13.56 MHz - with nominal supply voltage 24 V DC
Serial No.: ---	Test distance: 30 meters Test environment: open area test site
Applicant: Siemens AG	Limits: 13.553 - 13.567 MHz: 80.0 dB μ V/m outside the band: 29.5 dB μ V/m
	Restricted band: 13.36 - 13.41 MHz
	Note: emissions outside restricted band for reference only (carrier!)
	Channel A (red) = with EUT switched on Channel B (green) = with EUT switched off

Ref.Level 60 dB μ V/m
5 dB dB/Div.

ATT 10 dB

Ref. Offset 20 dB



Start 13.330 MHz
RBW 100 Hz

VBW 10 kHz

Stop 13.580 MHz
SWP 76 s

**** Multi Marker ****

Nr.	Frequency (MHz)	Level (dB μ V/m)	Channel
Nr.1	13.347500	20.34	(A)
Nr.2	13.360000	11.71	(A)
Nr.3	13.362222	19.81	(A)
Nr.4	13.402222	18.78	(A)
Nr.5	13.410000	11.97	(A)
Nr.6	13.560000	52.45	(A)
Nr.7			
Nr.8			

Tested by: Rainer Heller
Date: 12/21/1999

Project-No.: 51905-80638
Page of pages