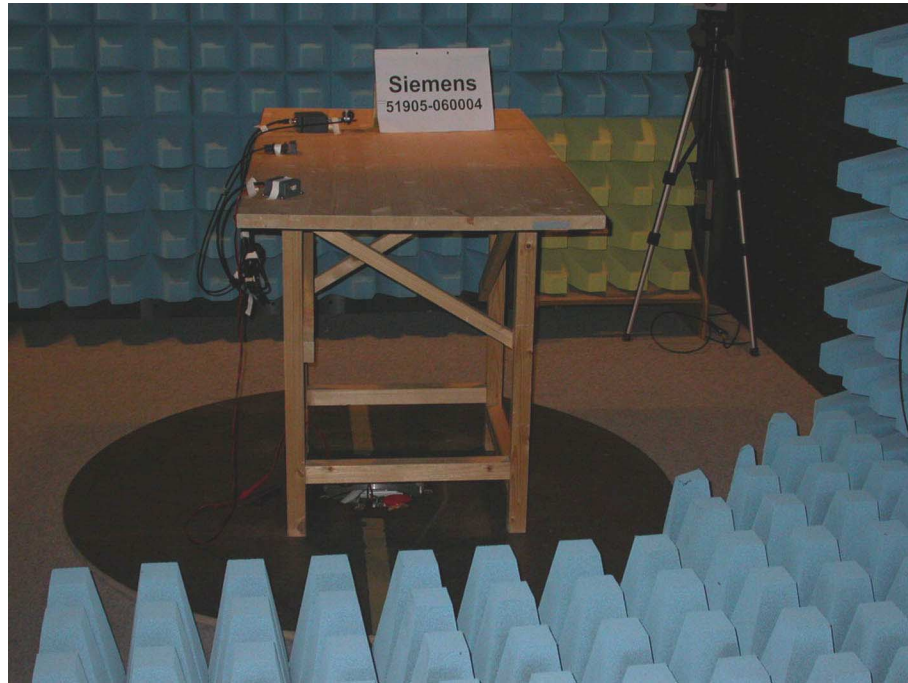
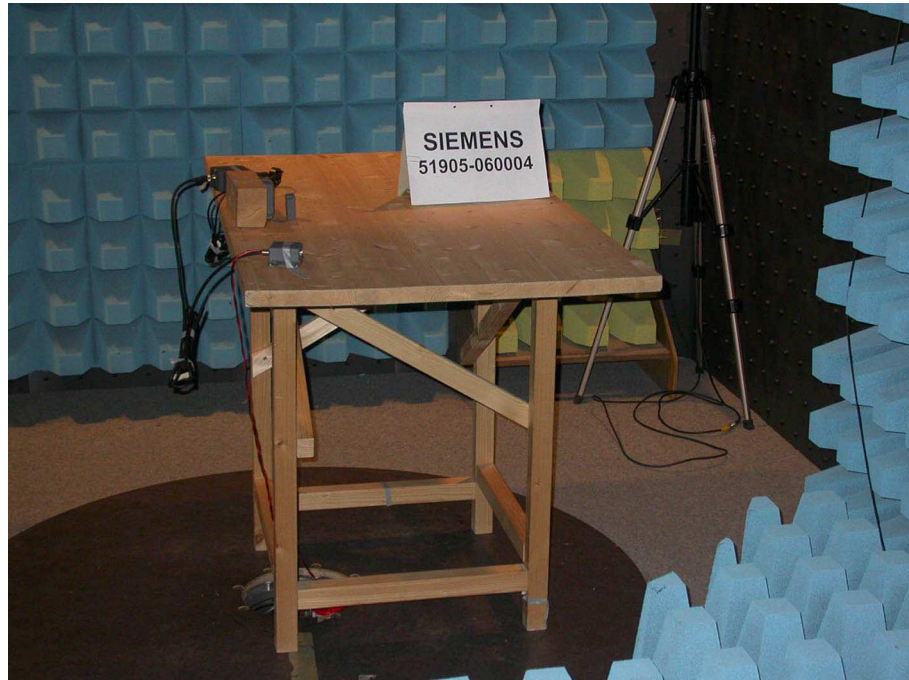


**Test setup for radiated emission measurement 9 kHz – 30 MHz**



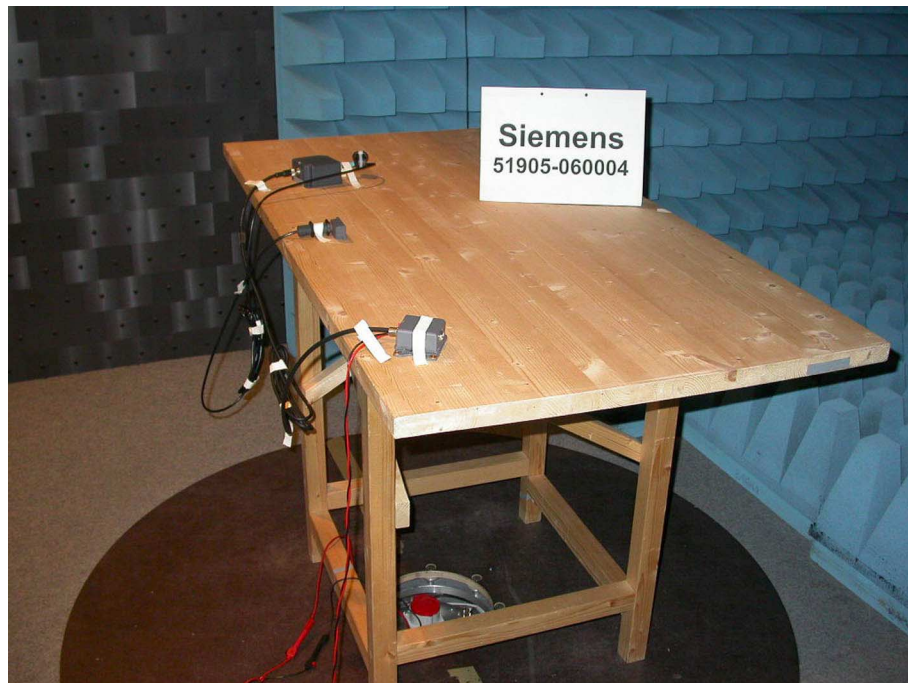
**Test setup for radiated emission measurement 9 kHz – 30 MHz  
- continued -**



**Test setup for radiated emission measurement 9 kHz – 30 MHz  
- continued -**



**Test setup for radiated emission measurement  
(fully anechoic room)**



**Test setup for radiated emission measurement  
(fully anechoic room) - continued -**



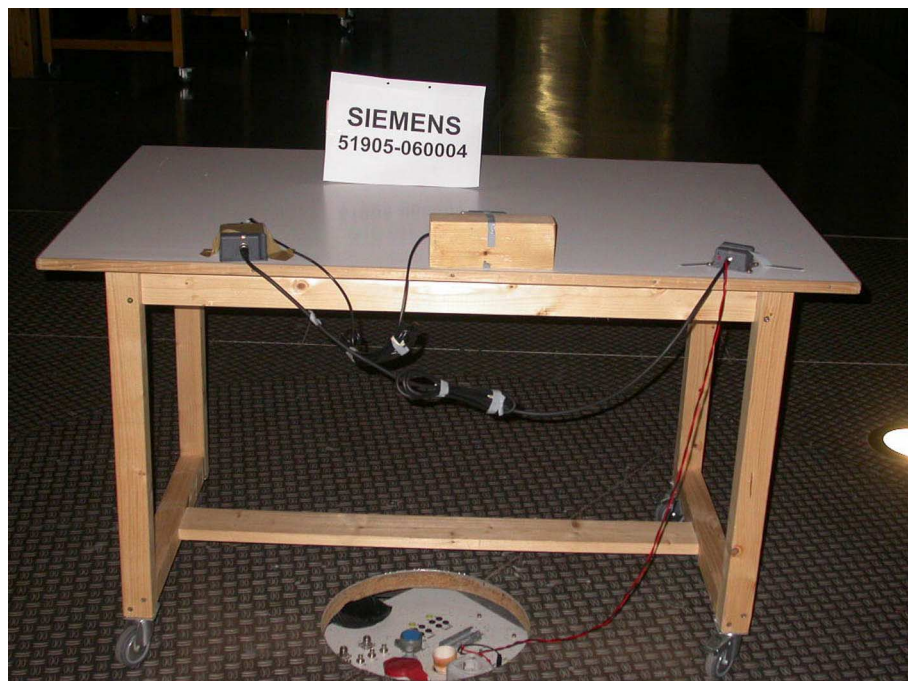
**Test setup for radiated emission measurement  
(fully anechoic room) - continued -**



**Test setup for radiated emission measurement  
(open field test site)**

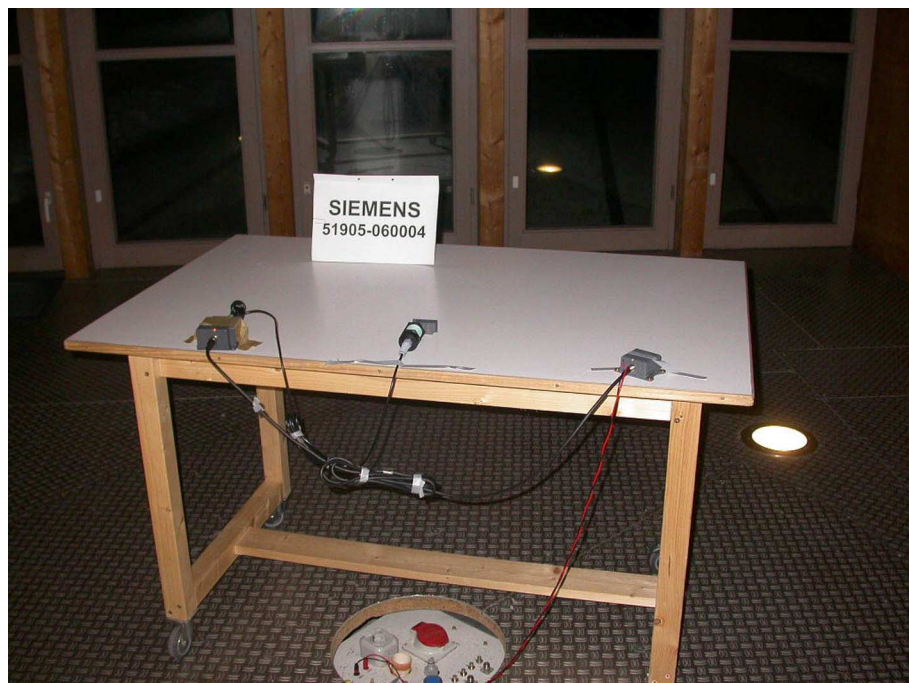


**Test setup for radiated emission measurement  
(open field test site) - continued -**





**Test setup for radiated emission measurement  
(open field test site) - continued -**



**Test setup for radiated emission measurement  
(open field test site) - continued -**

