

1 2 3 4

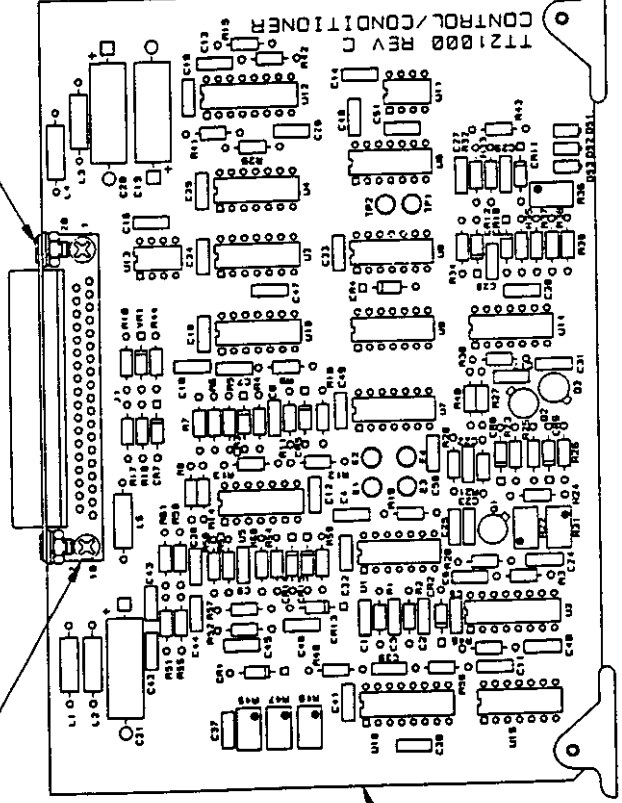
ZONE	REV	DESCRIPTION	DATE	APPROVED
	C	REVISED	01/05/98	

- 68 2 PL
- 70 2 PL
- 71 2 PL
- 72 2 PL

- 69 2 PL
- 70 2 PL
- 71 2 PL
- 72 2 PL

WIRING CHART

WIRE	FROM	TO
26AWG	E1	E2



SEE SEPARATE PARTS LIST

CONTRACT NO.		DATE	
APPROVALS		11/10/95	
DRAWN	K.KOENIG	CHECKED	
ISSUED		SCALE	NONE
UNLESS OTHERWISE SPECIFIED TOLERANCES ARE:		DO NOT SCALE DRAWING	
FRACTIONS	DECIMALS	ANGLES	
1/32	XX 0.03	±1°	
MATERIAL		FINISH	
NEXT ASSY		USED ON	
APPLICATION			

JAYCOR, HPM DIVISION	
CNTRL/CONDITIONER	
SIZE	TT21000A
DWG. NO.	TT21000A
REV.	C
SHEET	1 OF 1

5. USE SCHEMATIC NO. TT21000 FOR REFERENCE.
 4. MARK SERIAL NUMBER USING PERMANENT EPOXY INK.
 3. SQUARE PADS INDICATE PIN 1 OR CATHODE END.
 2. SOLDER PER MIL-STD-454, REQUIREMENT 5.
 1. COMPONENTS ARE IDENTIFIED BY REFERENCE DESIGNATOR.
- NOTES: UNLESS OTHERWISE SPECIFIED.

1 2 3 4

1
2
3
4

ZONE	REV	DESCRIPTION	DATE	APPROVED
	A	REVISED	01/13/98	

- 85 2 PL
- 87 2 PL
- 88 2 PL
- 89 2 PL

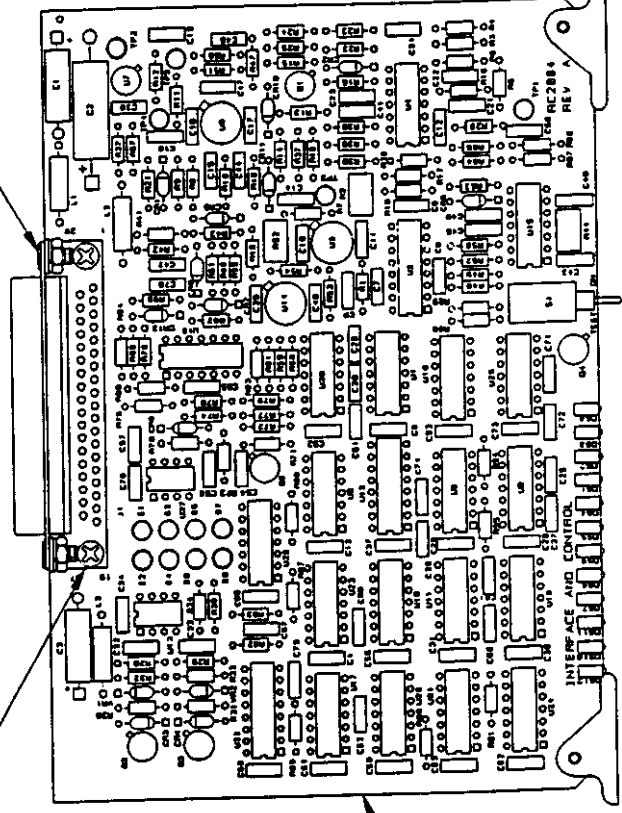
- 86 2 PL
- 87 2 PL
- 88 2 PL
- 89 2 PL

- 84 2 PL

- 83

WIRING CHART

CONFIGURATION	-1	-2
WIRE 1	E1-E2	E1-E4
WIRE 2	E3-E4	E3-E2
WIRE 3	E5-E6	E5-E8
WIRE 4	E7-E8	E7-E6



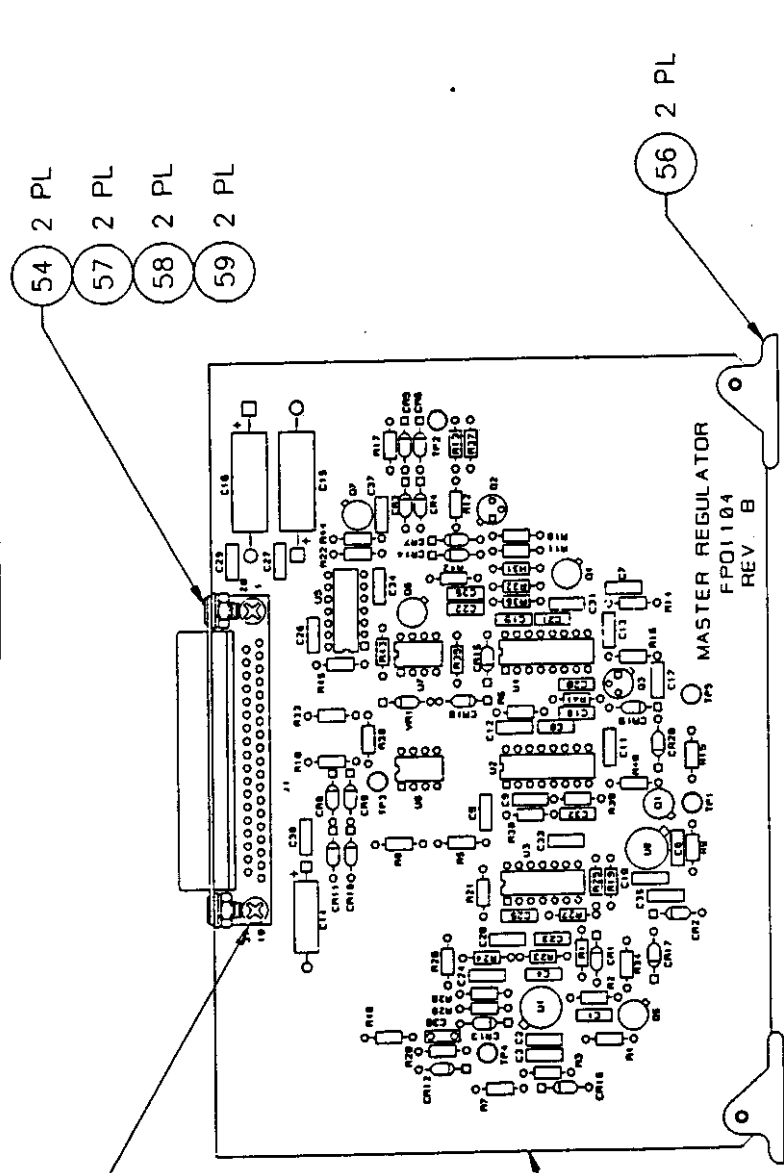
SEE SEPARATE PARTS LIST

CONTRACT NO.		DATE	
APPROVALS		08/14/97	
DRAWN K. KOENIG		CHECKED	
ISSUED		SCALE NONE	
UNLESS OTHERWISE SPECIFIED DIMENSIONS ARE:		DO NOT SCALE DRAWING	
FRACTIONS	DECIMALS	ANGLES	
1/16	XX 0.03	±1°	
	.XX 1.010		
MATERIAL		FINISH	
NEXT ASSY		USED ON	
APPLICATION			
JAYCOR, HPM DIVISION		INTERFACE/CONTROL	
SIZE	DWG. NO.	REV.	SHEET
B	RC2004	A	1 OF 1

5. USE SCHEMATIC NO. RC2004 FOR REFERENCE.
 4. MARK SERIAL NUMBER USING PERMANENT EPOXY INK.
 3. SQUARE PADS INDICATE PIN 1 OR CATHODE END.
 2. SOLDER PER MIL-STD-454, REQUIREMENT 5.
 1. COMPONENTS ARE IDENTIFIED BY REFERENCE DESIGNATOR.
- NOTES: UNLESS OTHERWISE SPECIFIED.

1
2
3
4

ZONE	REV	DESCRIPTION	DATE	APPROVED
	B	REVISED	01/05/98	



- 2 PL 55
- 2 PL 57
- 2 PL 58
- 2 PL 59

52

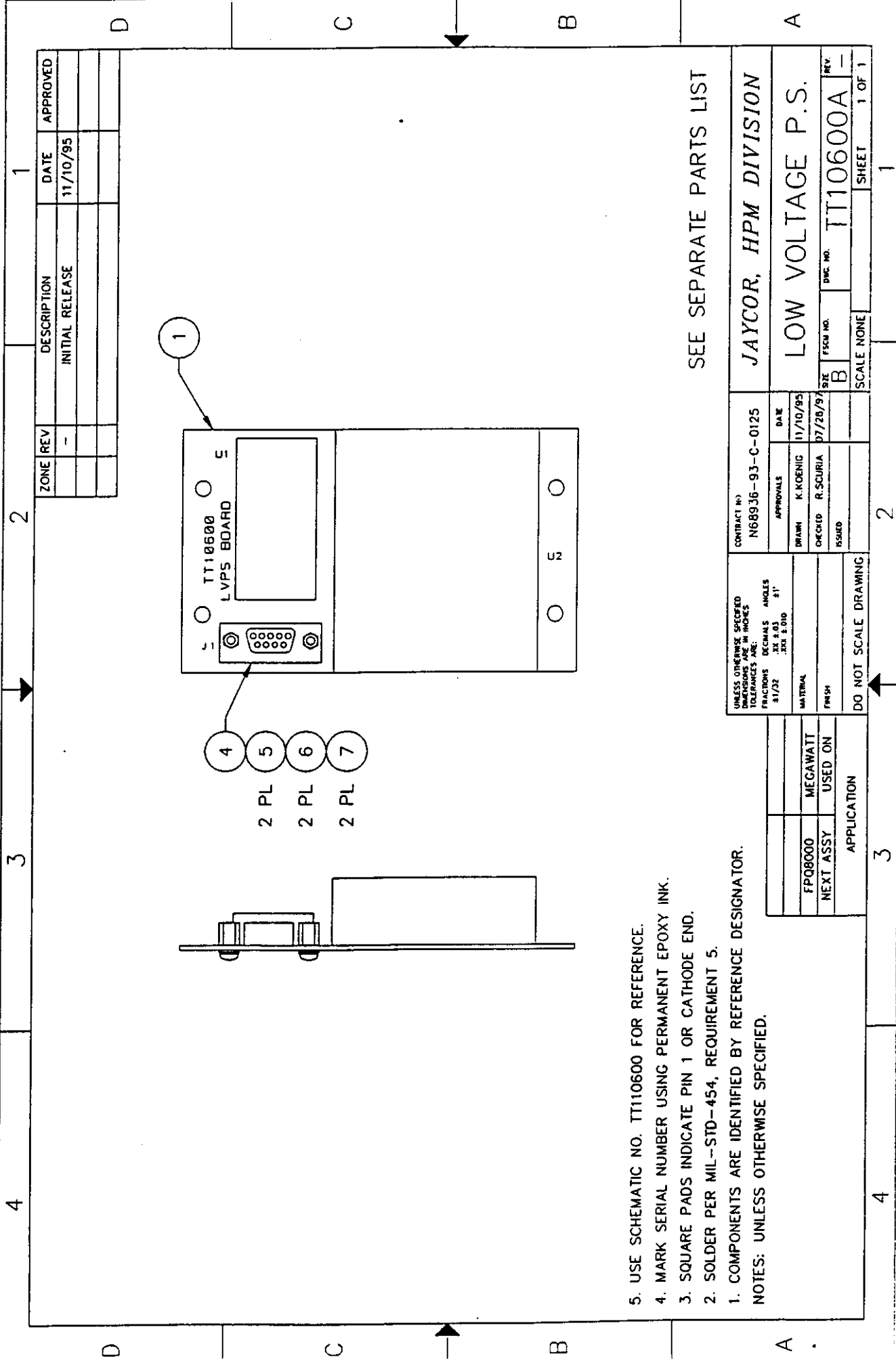
56 2 PL

- 5. USE SCHEMATIC NO. FPO1104 FOR REFERENCE.
 - 4. MARK SERIAL NUMBER USING PERMANENT EPOXY INK.
 - 3. SQUARE PADS INDICATE PIN 1 OR CATHODE END.
 - 2. SOLDER PER MIL-STD-454, REQUIREMENT 5.
 - 1. COMPONENTS ARE IDENTIFIED BY REFERENCE DESIGNATOR.
- NOTES: UNLESS OTHERWISE SPECIFIED.

SEE SEPARATE PARTS LIST

CONTRACT NO.		APPROVALS		DATE	
JAYCOR, HPM DIVISION		DRAWN K KOENIG		10/07/98	
MASTER REGULATOR		CHECKED			
FPO1104A		ISSUED			
SIZE B		FPO1104A		REV B	
SCALE NONE		SHEET 1		OF 1	

1 2 3 4



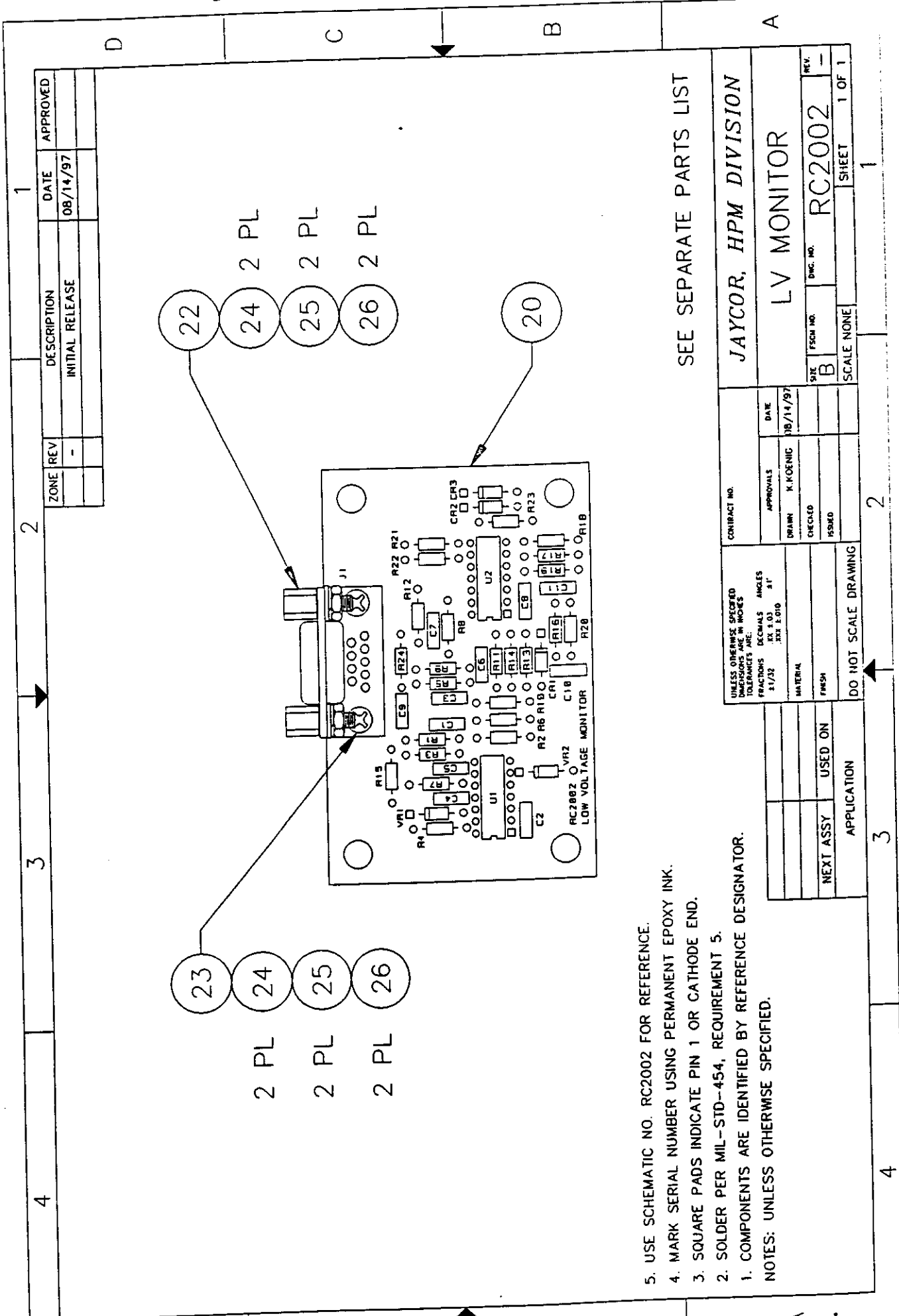
ZONE	REV	DESCRIPTION	DATE	APPROVED
		INITIAL RELEASE	11/10/95	

- 4 2 PL
- 5 2 PL
- 6 2 PL
- 7 2 PL

5. USE SCHEMATIC NO. TT110600 FOR REFERENCE.
 4. MARK SERIAL NUMBER USING PERMANENT EPOXY INK.
 3. SQUARE PADS INDICATE PIN 1 OR CATHODE END.
 2. SOLDER PER MIL-STD-454, REQUIREMENT 5.
 1. COMPONENTS ARE IDENTIFIED BY REFERENCE DESIGNATOR.
 NOTES: UNLESS OTHERWISE SPECIFIED.

SEE SEPARATE PARTS LIST

UNLESS OTHERWISE SPECIFIED DIMENSIONS ARE IN INCHES FRACTIONS DECIMALS ANGLES 81/32 .XX X.XX .X1°		CONTRACT NO. N68936-93-C-0125	
MATERIAL		APPROVALS	DATE
FRESH		DRAWN K. KOENIG	11/10/95
DO NOT SCALE DRAWING		CHECKED R. SCURIA	07/26/97
APPLICATION		ISSUED	
FPQ8000	MEGAWATT		
NEXT ASSY	USED ON		
		SCALE NONE	SHEET 1 OF 1
		JAYCOR, HPM DIVISION	
		LOW VOLTAGE P.S.	
		FSCU NO. B	REV. TT110600A



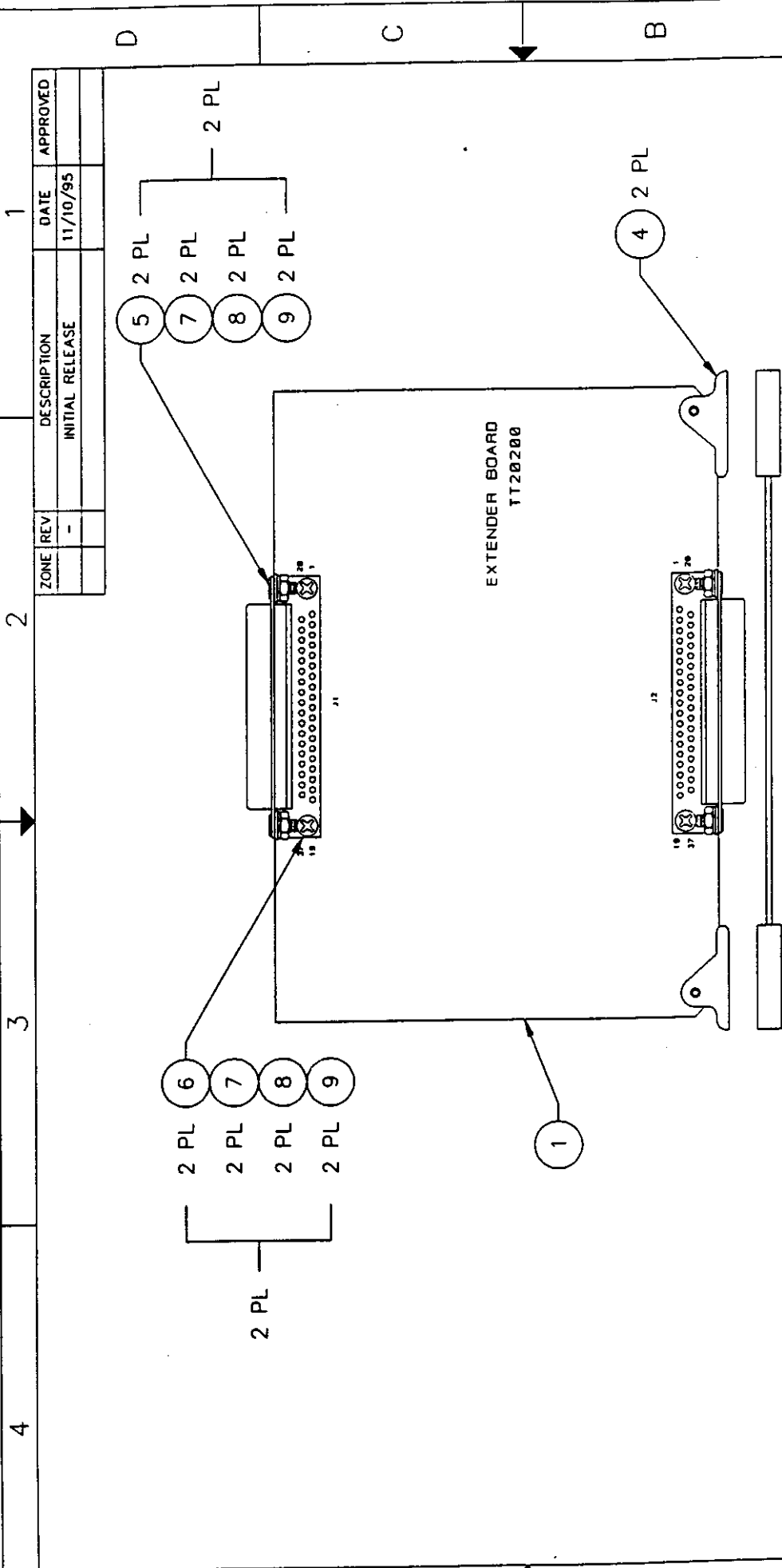
22 2 PL
 24 2 PL
 25 2 PL
 26 2 PL

23 2 PL
 24 2 PL
 25 2 PL
 26 2 PL

SEE SEPARATE PARTS LIST

UNLESS OTHERWISE SPECIFIED DIMENSIONS ARE IN INCHES FRACTIONS DECIMALS ANGLES 1/32 .001 .01 .01		CONTRACT NO.	
MATERIAL		APPROVALS	
FINISH		DRAWN K.KOENIG	
DO NOT SCALE DRAWING		CHECKED	
APPLICATION		DATE 08/14/97	
NEXT ASSY		SCALE NONE	
USED ON		SITE B	
APPLICATION		DWC. NO. RC2002	
APPLICATION		REV. -	
APPLICATION		SHEET 1 OF 1	

5. USE SCHEMATIC NO. RC2002 FOR REFERENCE.
 4. MARK SERIAL NUMBER USING PERMANENT EPOXY INK.
 3. SQUARE PADS INDICATE PIN 1 OR CATHODE END.
 2. SOLDER PER MIL-STD-454, REQUIREMENT 5.
 1. COMPONENTS ARE IDENTIFIED BY REFERENCE DESIGNATOR.
- NOTES: UNLESS OTHERWISE SPECIFIED.



4. MARK SERIAL NUMBER USING PERMANENT EPOXY INK.
 3. SQUARE PADS INDICATE PIN 1 OR CATHODE END.
 2. SOLDER PER MIL-STD-454, REQUIREMENT 5.
 1. COMPONENTS ARE IDENTIFIED BY REFERENCE DESIGNATOR.
- NOTES: UNLESS OTHERWISE SPECIFIED.

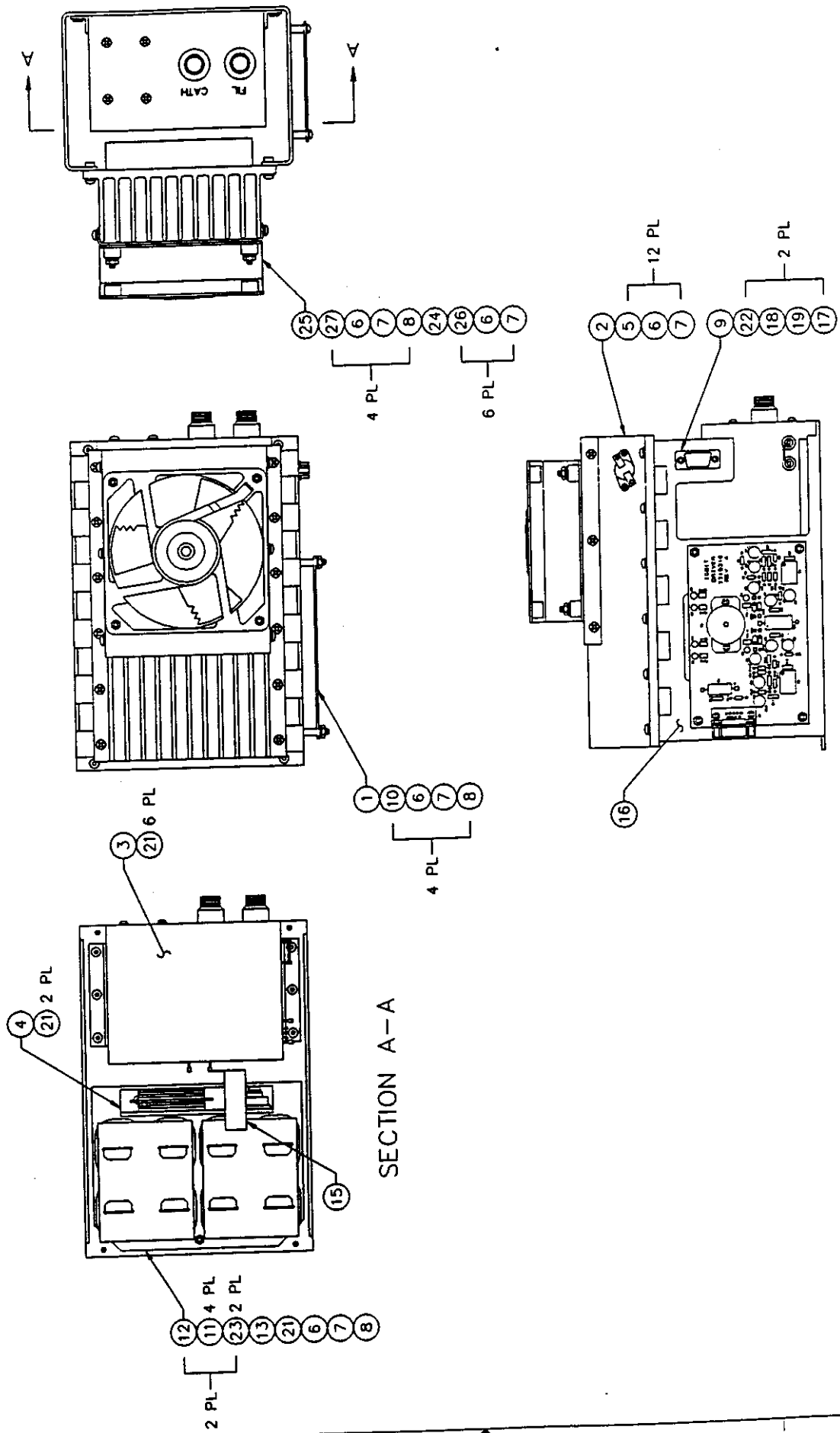
SEE SEPARATE PARTS LIST

ZONE	REV	DESCRIPTION	DATE	APPROVED
	-	INITIAL RELEASE	11/10/95	

UNLESS OTHERWISE SPECIFIED DIMENSIONS ARE IN INCHES		CONTRACT NO.		JAYCOR, HPM DIVISION	
FRACTIONS	DECIMALS	APPROVALS	DATE	EXTENDER BOARD	
1/32	.001	DRAWN K. KOENIG	11/10/95	SIZE	B
1/16	.002	CHECKED R. SCURIA	07/28/91	DWG. NO.	TT20200A
1/8	.005	ISSUED		SCALE	NONE
3/16	.015			SHEET	1 OF 1
1/2	.031				
3/4	.062				
1	.125				
2	.250				
3	.375				
4	.500				
5	.625				
6	.750				
7	.875				
8	1.000				
9	1.125				
10	1.250				
11	1.375				
12	1.500				
13	1.625				
14	1.750				
15	1.875				
16	2.000				
17	2.125				
18	2.250				
19	2.375				
20	2.500				
21	2.625				
22	2.750				
23	2.875				
24	3.000				
25	3.125				
26	3.250				
27	3.375				
28	3.500				
29	3.625				
30	3.750				
31	3.875				
32	4.000				
33	4.125				
34	4.250				
35	4.375				
36	4.500				
37	4.625				
38	4.750				
39	4.875				
40	5.000				
41	5.125				
42	5.250				
43	5.375				
44	5.500				
45	5.625				
46	5.750				
47	5.875				
48	6.000				
49	6.125				
50	6.250				
51	6.375				
52	6.500				
53	6.625				
54	6.750				
55	6.875				
56	7.000				
57	7.125				
58	7.250				
59	7.375				
60	7.500				
61	7.625				
62	7.750				
63	7.875				
64	8.000				
65	8.125				
66	8.250				
67	8.375				
68	8.500				
69	8.625				
70	8.750				
71	8.875				
72	9.000				
73	9.125				
74	9.250				
75	9.375				
76	9.500				
77	9.625				
78	9.750				
79	9.875				
80	10.000				
81	10.125				
82	10.250				
83	10.375				
84	10.500				
85	10.625				
86	10.750				
87	10.875				
88	11.000				
89	11.125				
90	11.250				
91	11.375				
92	11.500				
93	11.625				
94	11.750				
95	11.875				
96	12.000				
97	12.125				
98	12.250				
99	12.375				
100	12.500				

4 3 2 1

ZONE	REV	DATE	BY
		11/02/97	
INITIAL RELEASE			



BA16000

SEE SEPARATE PARTS LIST

CONTRACT NO.		DATE	
APPROVALS		11/02/97	
DRAWN		K. KOENIG	
CHECKED			
ISSUED			
MATERIAL		FINISH	
NEXT ASSY		USED ON	
APPLICATION			

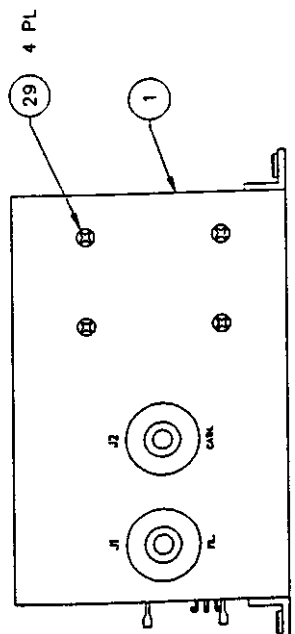
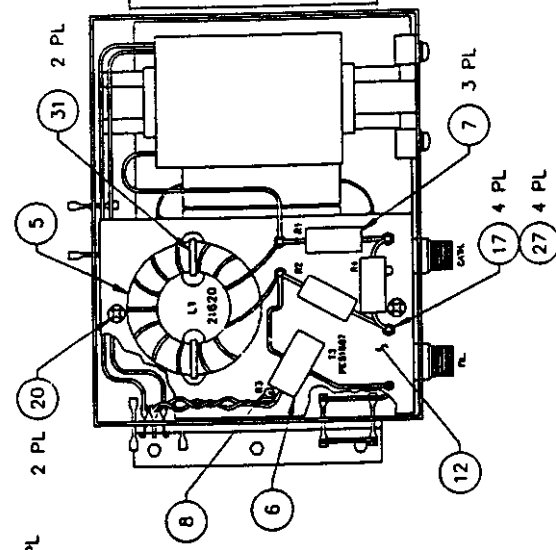
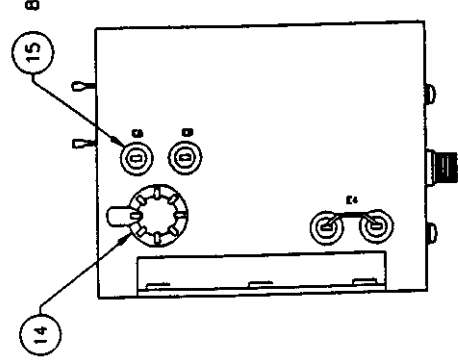
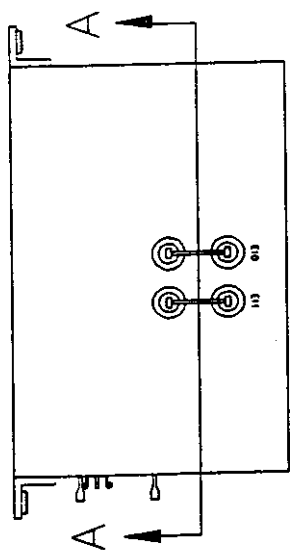
JAYCOR, HPM DIVISION
MODULATOR ASSY
PART NO. BA16000
SCALE NONE SHEET 1 OF 1

5. USE SCHEMATIC NO. BA16000 FOR REFERENCE.
 4. MARK SERIAL NUMBER USING PERMANENT EPOXY INK.
 3. SQUARE PADS INDICATE PIN 1 OR CATHODE END.
 2. SOLDER PER MIL-STD-454, REQUIREMENT 5.
 1. COMPONENTS ARE IDENTIFIED BY REFERENCE DESIGNATOR.
- NOTES: UNLESS OTHERWISE SPECIFIED.

1
2
3
4

ZONE	REV	DESCRIPTION	INITIAL	RELEASE	DATE	APPROVED
					10/22/97	

BA16500



SECTION A-A

SEE SEPARATE PARTS LIST

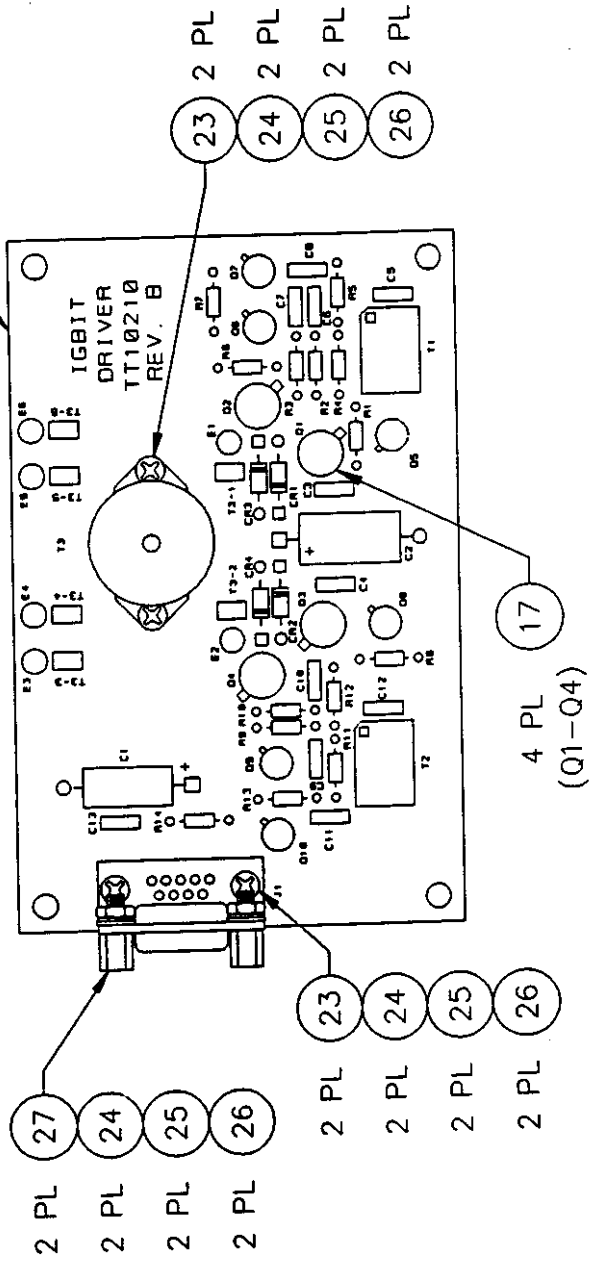
5. USE SCHEMATIC NO. BA16500 FOR REFERENCE.
 4. MARK SERIAL NUMBER USING PERMANENT EPOXY INK.
 3. SQUARE PADS INDICATE PIN 1 OR CATHODE END.
 2. SOLDER PER MIL-STD-454, REQUIREMENT 5.
 1. COMPONENTS ARE IDENTIFIED BY REFERENCE DESIGNATOR.
- NOTES: UNLESS OTHERWISE SPECIFIED.

UNLESS OTHERWISE SPECIFIED DIMENSIONS ARE IN INCHES FRACTIONS DECIMALS ANGLES 1/16 1/32 1/64 1/8 1/4 3/8 1/2 5/8 3/4 7/8 1 1 1/4 1 1/2 1 3/4 2 2 1/4 2 1/2 3 3 1/4 3 1/2 4 4 1/4 4 1/2 5 5 1/4 5 1/2 6 6 1/4 6 1/2 7 7 1/4 7 1/2 8 8 1/4 8 1/2 9 9 1/4 9 1/2 10 10 1/4 10 1/2 11 11 1/4 11 1/2 12 12 1/4 12 1/2 13 13 1/4 13 1/2 14 14 1/4 14 1/2 15 15 1/4 15 1/2 16 16 1/4 16 1/2 17 17 1/4 17 1/2 18 18 1/4 18 1/2 19 19 1/4 19 1/2 20 20 1/4 20 1/2 21 21 1/4 21 1/2 22 22 1/4 22 1/2 23 23 1/4 23 1/2 24 24 1/4 24 1/2 25 25 1/4 25 1/2 26 26 1/4 26 1/2 27 27 1/4 27 1/2 28 28 1/4 28 1/2 29 29 1/4 29 1/2 30 30 1/4 30 1/2 31 31 1/4 31 1/2 32 32 1/4 32 1/2 33 33 1/4 33 1/2 34 34 1/4 34 1/2 35 35 1/4 35 1/2 36 36 1/4 36 1/2 37 37 1/4 37 1/2 38 38 1/4 38 1/2 39 39 1/4 39 1/2 40 40 1/4 40 1/2 41 41 1/4 41 1/2 42 42 1/4 42 1/2 43 43 1/4 43 1/2 44 44 1/4 44 1/2 45 45 1/4 45 1/2 46 46 1/4 46 1/2 47 47 1/4 47 1/2 48 48 1/4 48 1/2 49 49 1/4 49 1/2 50 50 1/4 50 1/2 51 51 1/4 51 1/2 52 52 1/4 52 1/2 53 53 1/4 53 1/2 54 54 1/4 54 1/2 55 55 1/4 55 1/2 56 56 1/4 56 1/2 57 57 1/4 57 1/2 58 58 1/4 58 1/2 59 59 1/4 59 1/2 60 60 1/4 60 1/2 61 61 1/4 61 1/2 62 62 1/4 62 1/2 63 63 1/4 63 1/2 64 64 1/4 64 1/2 65 65 1/4 65 1/2 66 66 1/4 66 1/2 67 67 1/4 67 1/2 68 68 1/4 68 1/2 69 69 1/4 69 1/2 70 70 1/4 70 1/2 71 71 1/4 71 1/2 72 72 1/4 72 1/2 73 73 1/4 73 1/2 74 74 1/4 74 1/2 75 75 1/4 75 1/2 76 76 1/4 76 1/2 77 77 1/4 77 1/2 78 78 1/4 78 1/2 79 79 1/4 79 1/2 80 80 1/4 80 1/2 81 81 1/4 81 1/2 82 82 1/4 82 1/2 83 83 1/4 83 1/2 84 84 1/4 84 1/2 85 85 1/4 85 1/2 86 86 1/4 86 1/2 87 87 1/4 87 1/2 88 88 1/4 88 1/2 89 89 1/4 89 1/2 90 90 1/4 90 1/2 91 91 1/4 91 1/2 92 92 1/4 92 1/2 93 93 1/4 93 1/2 94 94 1/4 94 1/2 95 95 1/4 95 1/2 96 96 1/4 96 1/2 97 97 1/4 97 1/2 98 98 1/4 98 1/2 99 99 1/4 99 1/2 100 100 1/4 100 1/2	
---	--

JAYCOR, HPM DIVISION	
OIL CAN ASSY	
DATE	10/22/97
APPROVALS	
DESIGNED BY	K. ECKING
CHECKED BY	
SCALE	1 OF 1
PART NO.	BA16500
SCALE	1 OF 1

DO NOT SCALE DRAWING

ZONE	REV	DESCRIPTION	DATE	APPROVED
	B	REVISED	01/05/98	



SEE SEPARATE PARTS LIST

CONTRACT NO.		DATE	
APPROVALS		11/10/95	
DRAWN	K. KOENIG	ISSUED	
CHECKED		SCALE	NONE
JAYCOR, HPM DIVISION		SIZE	B
IGBT DRIVER		DWG. NO.	TT10210
REV	B	SHEET	1 OF 1

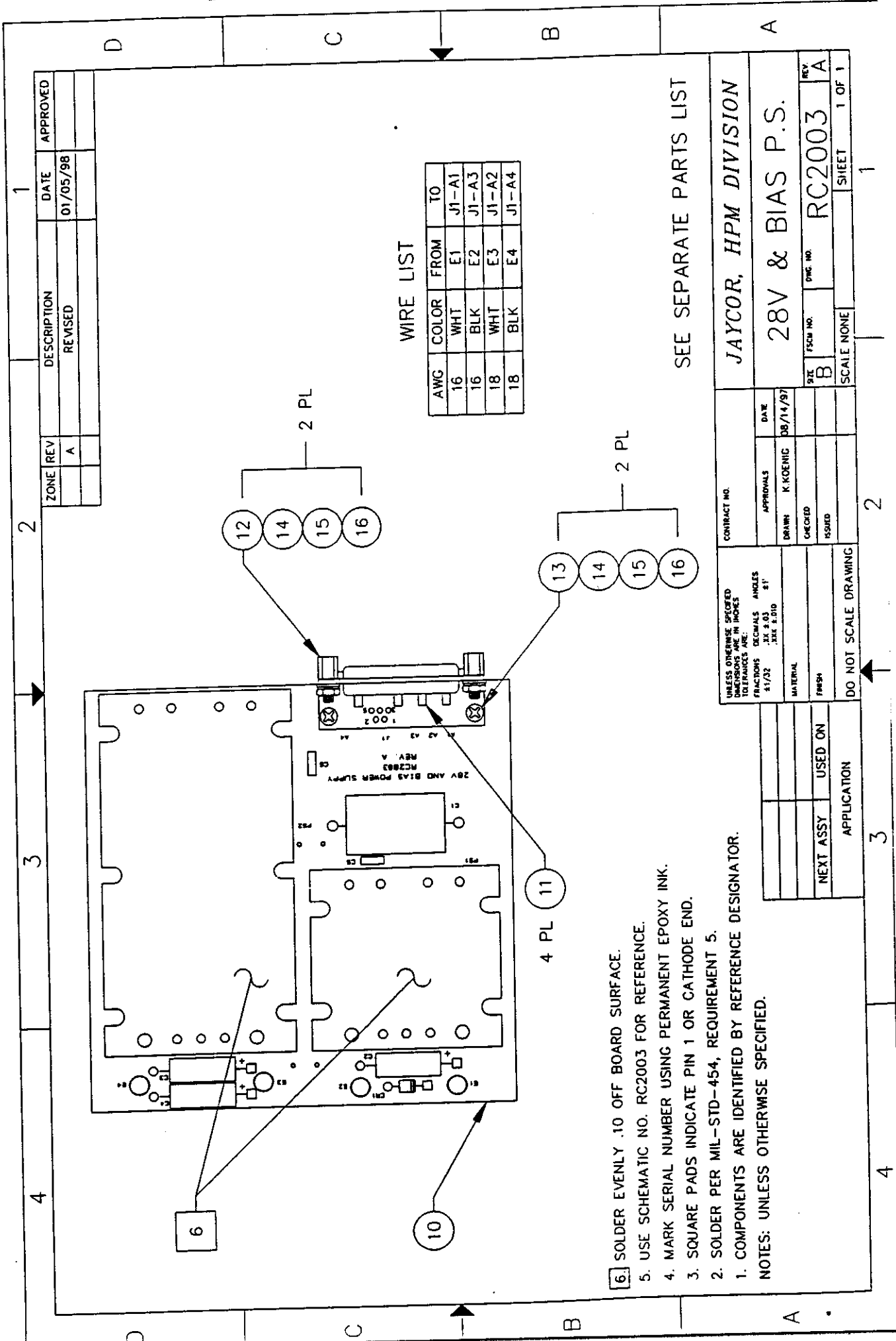
UNLESS OTHERWISE SPECIFIED DIMENSIONS ARE IN INCHES. TOLERANCES ARE:		FRACTIONS DECIMALS ANGLES	
		.XX 3.03 .51°	
MATERIAL		FINISH	
DO NOT SCALE DRAWING			

- 5. USE SCHEMATIC NO. TT10210 FOR REFERENCE.
 - 4. MARK SERIAL NUMBER USING PERMANENT EPOXY INK.
 - 3. SQUARE PADS INDICATE PIN 1 OR CATHODE END.
 - 2. SOLDER PER MIL-STD-454, REQUIREMENT 5.
 - 1. COMPONENTS ARE IDENTIFIED BY REFERENCE DESIGNATOR.
- NOTES: UNLESS OTHERWISE SPECIFIED.

DO NOT SCALE DRAWING

3

4



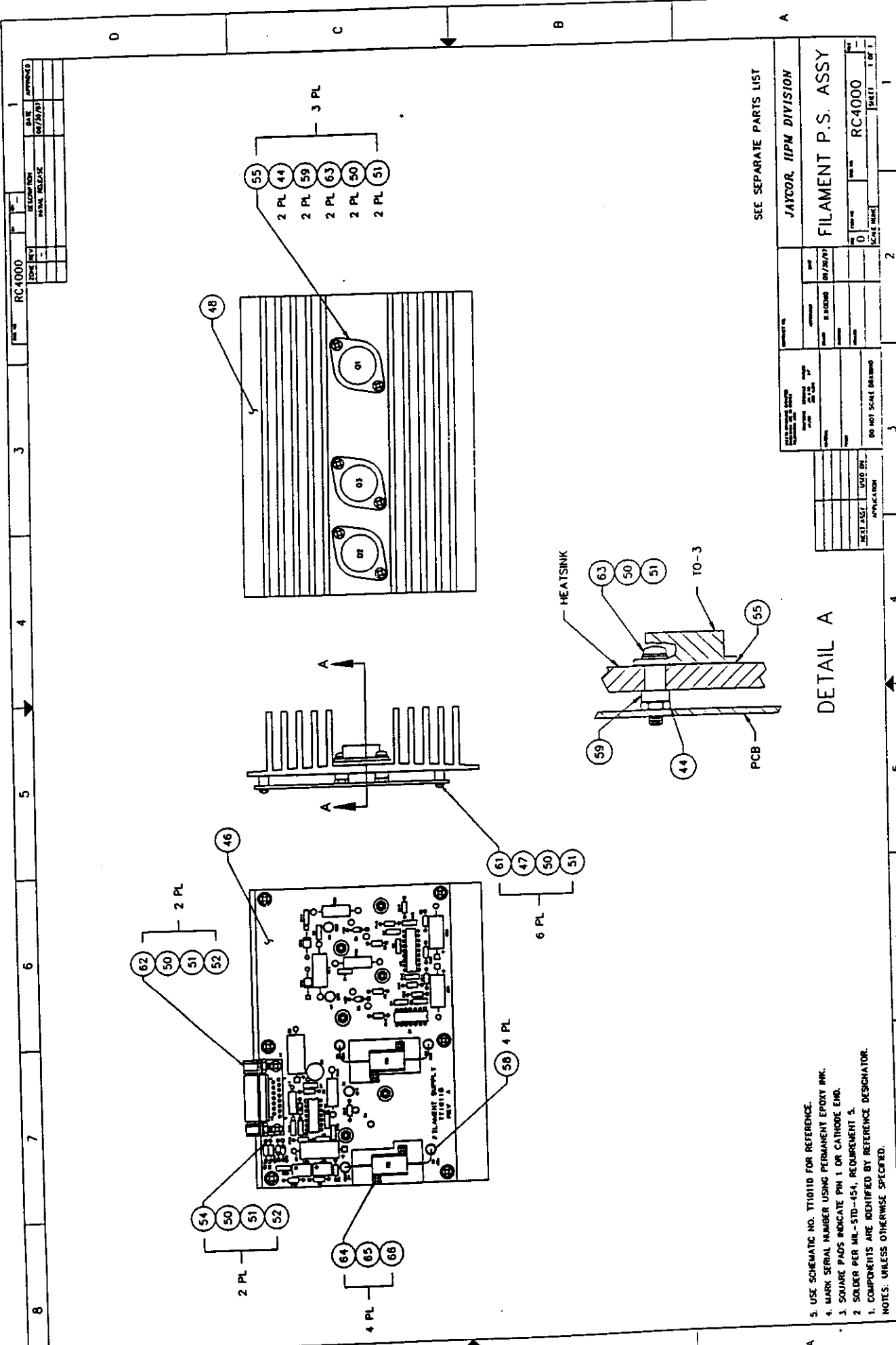
ZONE	REV	DESCRIPTION	DATE	APPROVED
	A	REVISED	01/05/98	

AWG	COLOR	FROM	TO
16	WHT	E1	J1-A1
16	BLK	E2	J1-A3
18	WHT	E3	J1-A2
18	BLK	E4	J1-A4

- 6. SOLDER EVENLY .10 OFF BOARD SURFACE.
 - 5. USE SCHEMATIC NO. RC2003 FOR REFERENCE.
 - 4. MARK SERIAL NUMBER USING PERMANENT EPOXY INK.
 - 3. SQUARE PADS INDICATE PIN 1 OR CATHODE END.
 - 2. SOLDER PER MIL-STD-454, REQUIREMENT 5.
 - 1. COMPONENTS ARE IDENTIFIED BY REFERENCE DESIGNATOR.
- NOTES: UNLESS OTHERWISE SPECIFIED.

SEE SEPARATE PARTS LIST

UNLESS OTHERWISE SPECIFIED DIMENSIONS ARE IN INCHES FRACTIONS DECIMALS ANGLES 1/32 .001 .015 .015		CONTRACT NO.	
MATERIAL		DATE 08/14/97	
FINISH		APPROVALS DRAWN K. KOENIG	
APPLICATION		CHECKED	
USED ON		ISSUED	
DO NOT SCALE DRAWING		SCALE NONE	
JAYCOR, HPM DIVISION		DWG. NO. RC2003	
28V & BIAS P.S.		SHEET 1 OF 1	



5. USE SCHEMATIC NO. T10110 FOR REFERENCE.
 4. MARK SERIAL NUMBER USING PERMANENT EPOXY INK.
 3. SQUARE PADS INDICATE PIN 1 OR CATHODE END.
 2. SOLDER PER MIL-STD-454, REQUIREMENT 5.
 1. COMPONENTS ARE IDENTIFIED BY REFERENCE DESIGNATOR.
 NOTES: UNLESS OTHERWISE SPECIFIED.

SEE SEPARATE PARTS LIST

PART NO.		REV.		DATE	
RC4000		1		06/25/97	
DESCRIPTION		REV.		DATE	
FILAMENT P.S. ASSY		1		06/25/97	
DRAWN BY		CHECKED BY		DATE	
JAYCOR, IIPM DIVISION		RC4000		06/25/97	
SCALE		SHEET		OF	
1		2		1	

DETAIL A

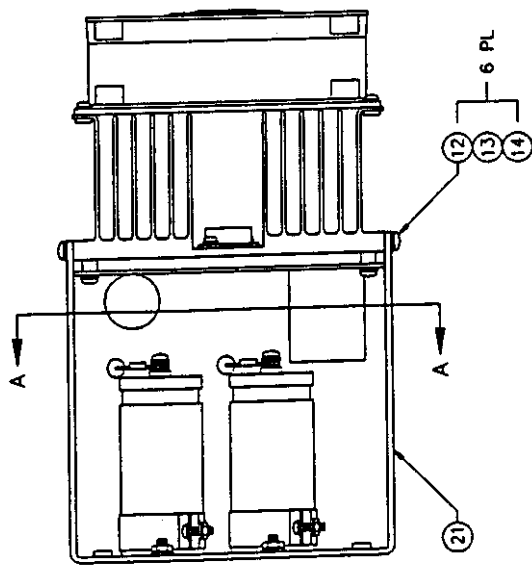
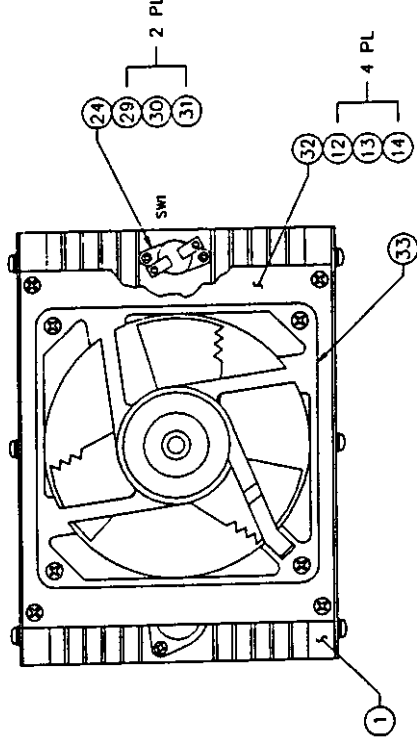
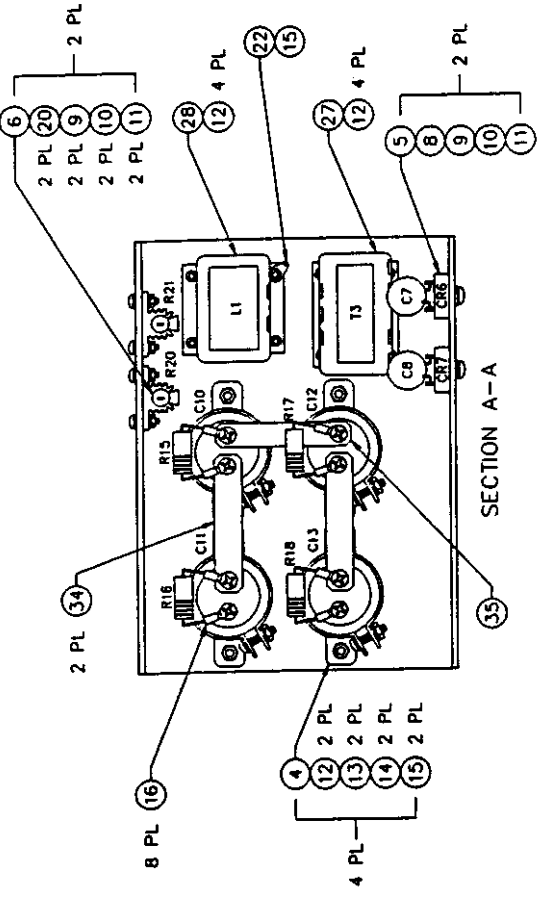
REV	DATE	APPROVED
1	10/7/71	
DESCRIPTION	SERIAL RELEASE	
FORM NO.	1	

REV	DATE	APPROVED
1	10/7/71	
DESCRIPTION	SERIAL RELEASE	
FORM NO.	1	

REV	DATE	APPROVED
1	10/7/71	
DESCRIPTION	SERIAL RELEASE	
FORM NO.	1	

REV	DATE	APPROVED
1	10/7/71	
DESCRIPTION	SERIAL RELEASE	
FORM NO.	1	

REV	DATE	APPROVED
1	10/7/71	
DESCRIPTION	SERIAL RELEASE	
FORM NO.	1	

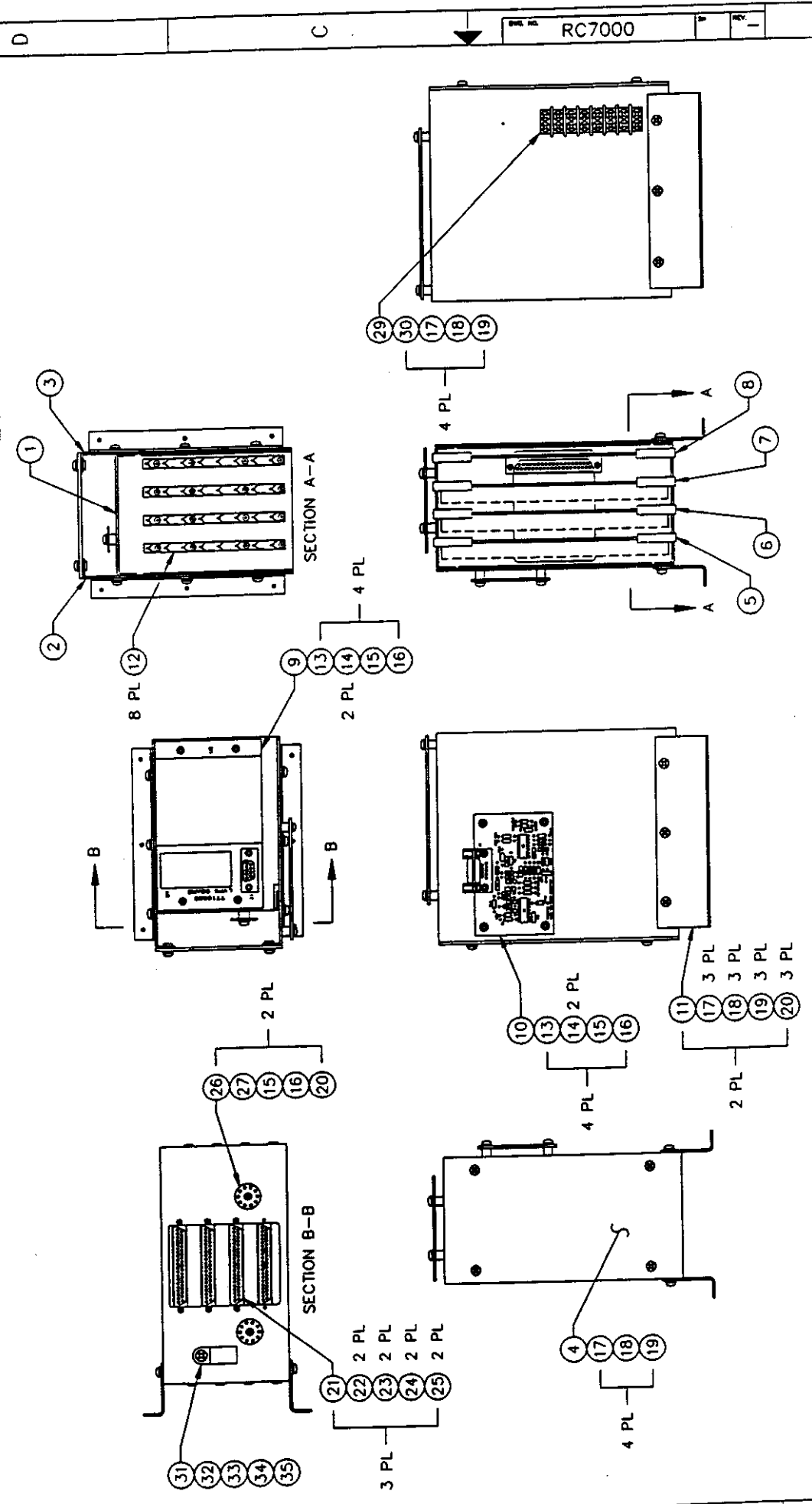


SEE SEPARATE PARTS LIST

JAYCOR, HPM DIVISION	
DC-DC CONV ASSY	
FORM NO.	RC3000
REV	1
DATE	10/7/71
DESCRIPTION	SERIAL RELEASE
FORM NO.	1

5. USE SCHEMATIC NO. T120130 FOR REFERENCE.
 4. MARK SERIAL NUMBER USING PERMANENT EPOXY INK.
 3. SQUARE PADS INDICATE PIN 1 OR CATHODE END.
 2. SOLDER PER MIL-STD-454, REQUIREMENT 5.
 1. COMPONENTS ARE IDENTIFIED BY REFERENCE DESIGNATOR.
- NOTES: UNLESS OTHERWISE SPECIFIED.

INITIAL RELEASE	09/24/97



SEE SEPARATE PARTS LIST

CONTRACT NO.		DATE	
APPROVALS		DATE	
DESIGN	FLIGHTING	CHECKER	DATE
CHECKED BY: _____ DATE: 09/24/97			
DRAWING NO.: RC7000 SHEET: 1 OF 1			
SCALE: NONE			
DO NOT SCALE DRAWING			
APPLICATION: _____			
NEXT ASSY USED ON: _____			

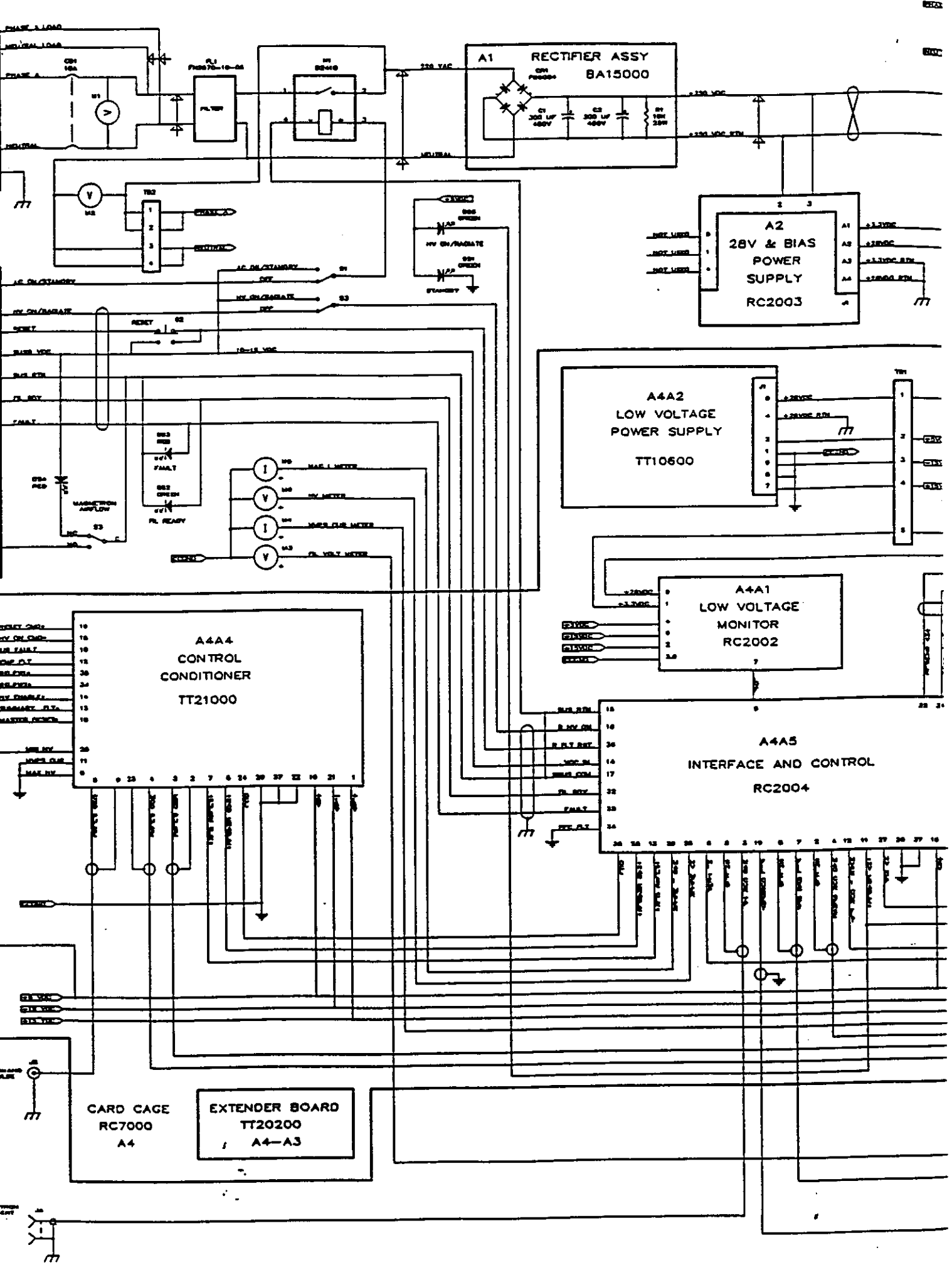
5. USE SCHEMATIC NO. RC9000 FOR REFERENCE.
 4. MARK SERIAL NUMBER USING PERMANENT EPOXY INK.
 3. SQUARE PADS INDICATE PIN 1 OR CATHODE END.
 2. SOLDER PER MIL-STD-454, REQUIREMENT 5.
 1. COMPONENTS ARE IDENTIFIED BY REFERENCE DESIGNATOR.
- NOTES: UNLESS OTHERWISE SPECIFIED.

1

2

3

4



A1 RECTIFIER ASSY
BA15000

220 VAC
NEUTRAL

1 2 3 4

C1 300 UF 400V
C2 300 UF 400V
R1 10K 20W

+120 VDC
+120 VDC RTN

A2 28V & BIAS POWER SUPPLY
RC2003

2 3
1 4

NOT USED
NOT USED
NOT USED

+12VDC
+28VDC
+12VDC RTN
+28VDC RTN

A4A2 LOW VOLTAGE POWER SUPPLY
TT10600

1 2 3 4 5 6 7

+28VDC
+28VDC RTN

1 2 3 4

1 2 3 4

A4A1 LOW VOLTAGE MONITOR
RC2002

0 1 2 3 4 5 6 7

+28VDC
+12VDC

0 1 2 3 4 5 6 7

A4A4 CONTROL CONDITIONER
TT21000

10 11 12 13 14 15 16 17 18 19 20 21 22 23 24 25 26 27 28 29 30 31 32 33 34 35 36 37 38 39 40 41 42 43 44 45 46 47 48 49 50

0 1 2 3 4 5 6 7 8 9 10 11 12 13 14 15 16 17 18 19 20 21 22 23 24 25 26 27 28 29 30 31 32 33 34 35 36 37 38 39 40 41 42 43 44 45 46 47 48 49 50

MAE I METER
HV METER
HVPS CLR METER
PL VOLT METER

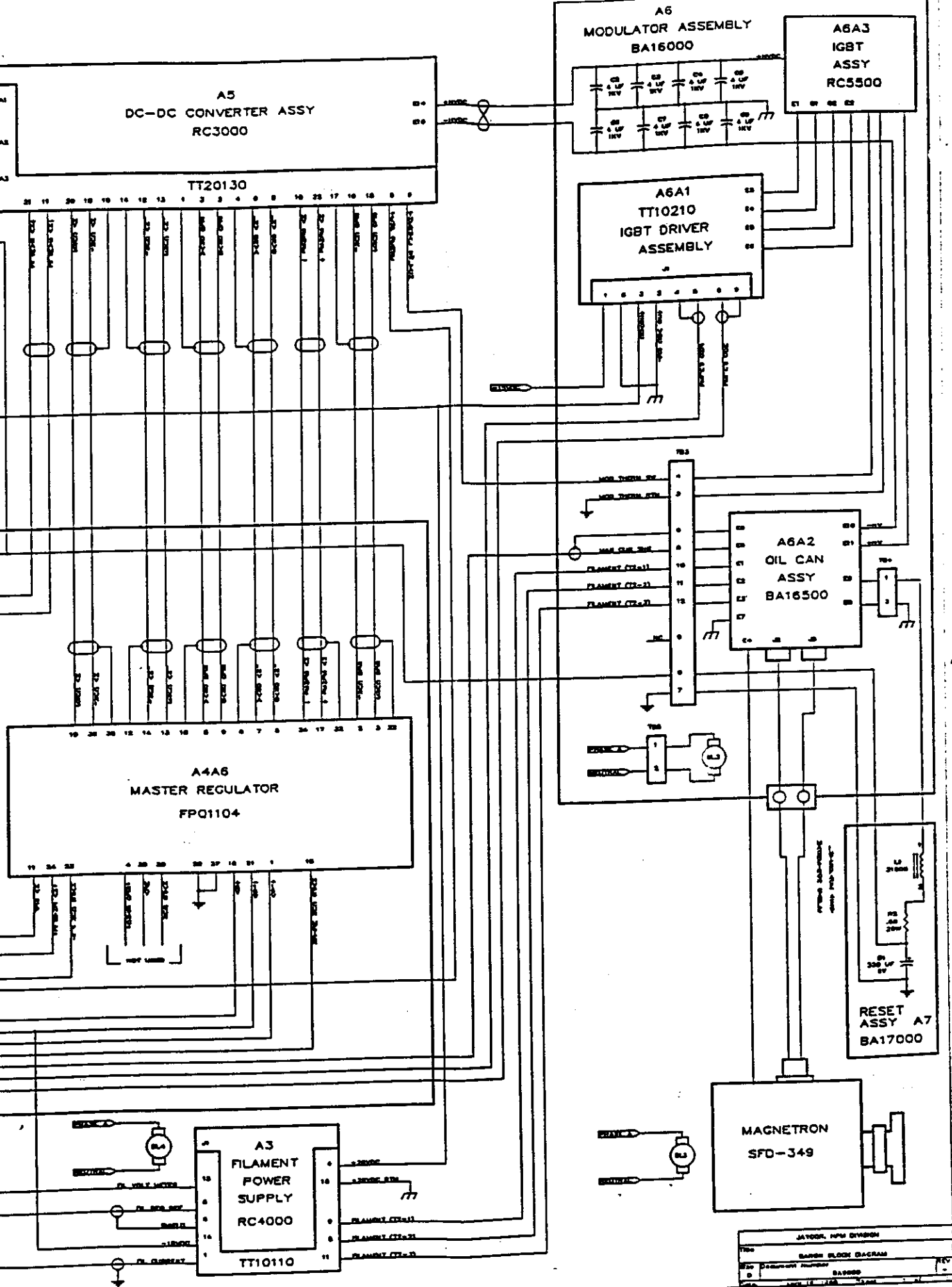
A4A5 INTERFACE AND CONTROL
RC2004

15 16 17 18 19 20 21 22 23 24 25 26 27 28 29 30 31 32 33 34 35 36 37 38 39 40 41 42 43 44 45 46 47 48 49 50

15 16 17 18 19 20 21 22 23 24 25 26 27 28 29 30 31 32 33 34 35 36 37 38 39 40 41 42 43 44 45 46 47 48 49 50

CARD CAGE
RC7000
A4

EXTENDER BOARD
TT20200
A4-A3



JATCOB, NPM DIVISION	
FIG. NO.	BA16000
REV.	1
DATE	1968-11-15

4 3 2 1

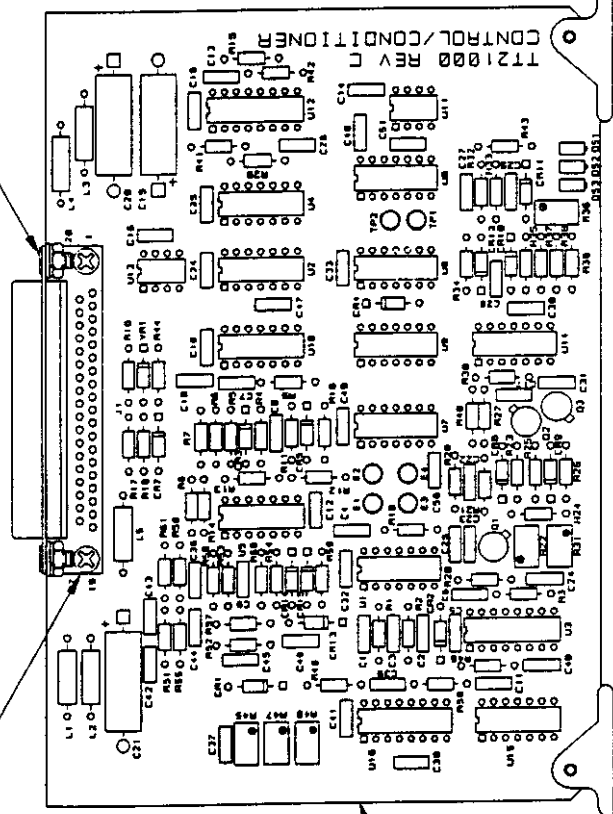
ZONE	REV	DESCRIPTION	DATE	APPROVED
	C	REVISED	01/05/98	

- 68 2 PL
- 70 2 PL
- 71 2 PL
- 72 2 PL

- 69 2 PL
- 70 2 PL
- 71 2 PL
- 72 2 PL

WIRING CHART

WIRE	FROM	TO
26AWG	E1	E2



- 67 2 PL

5. USE SCHEMATIC NO. TT21000 FOR REFERENCE.
 4. MARK SERIAL NUMBER USING PERMANENT EPOXY INK.
 3. SQUARE PADS INDICATE PIN 1 OR CATHODE END.
 2. SOLDER PER MIL-STD-454, REQUIREMENT 5.
 1. COMPONENTS ARE IDENTIFIED BY REFERENCE DESIGNATOR.
- NOTES: UNLESS OTHERWISE SPECIFIED.

SEE SEPARATE PARTS LIST

CONTRACT NO.		DATE	
APPROVALS		11/10/95	
DRAWN	K. K. DENIC	CHECKED	
ISSUED			
UNLESS OTHERWISE SPECIFIED		DO NOT SCALE DRAWING	
DIMENSIONS IN INCHES		FRACTIONS DECIMALS ANGLES	
1/32 .003125 .0005		.001 .001 90°	
MATERIAL		FINISH	
NEXT ASSY		USED ON	
APPLICATION			

JAYCOR, HPM DIVISION

CNTRL/CONDITIONER

REV C

TT21000A

REV C

SIZE B

DWG. NO. TT21000A

SCALE NONE

SHEET 1 OF 1

4 3 2 1

1 2 3 4

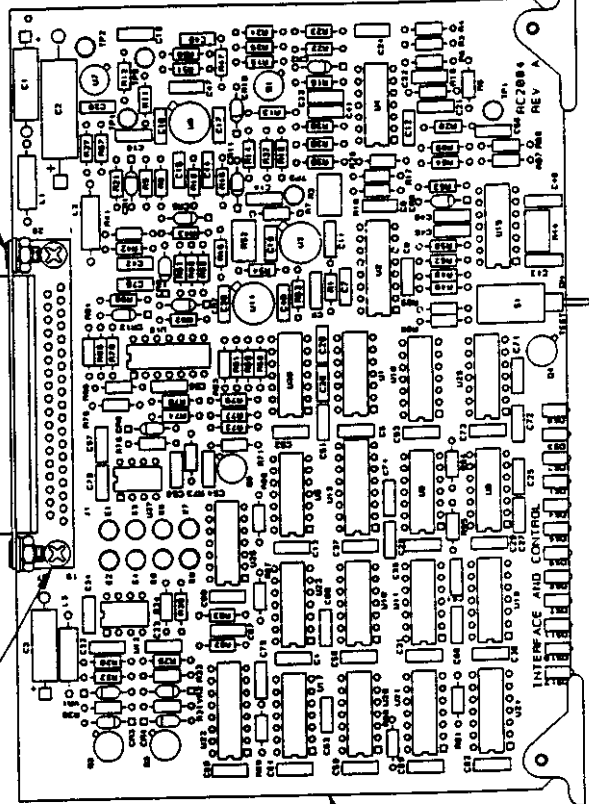
ZONE	REV	DESCRIPTION	DATE	APPROVED
	A	REVISED	01/13/98	

- 85 2 PL
- 87 2 PL
- 88 2 PL
- 89 2 PL

- 2 PL 86
- 2 PL 87
- 2 PL 88
- 2 PL 89

WIRING CHART

CONFIGURATION	-1	-2
WIRE 1	E1-E2	E1-E4
WIRE 2	E3-E4	E3-E2
WIRE 3	E5-E6	E5-E8
WIRE 4	E7-E8	E7-E6



SEE SEPARATE PARTS LIST

CONTRACT NO.		APPROVALS		DATE	
		K. KOENIG		08/14/97	
UNLESS OTHERWISE SPECIFIED DIMENSIONS ARE IN INCHES TOLERANCES ARE:		DRAWN		CHECKED	
FRACTIONS .XX .03 .1/32		K. KOENIG		ISSUED	
DECIMALS .XX .03 .1		MATERIAL		DO NOT SCALE DRAWING	
ANGLES .XX .03 .1		FINISH			
.XX .010		APPLICATION			
		NEXT ASSY		USED ON	
		SCALE NONE		SHEET 1 OF 1	
		SITE		REV.	
		B		A	
		FSCM NO.		RC2004	
		DWC NO.			

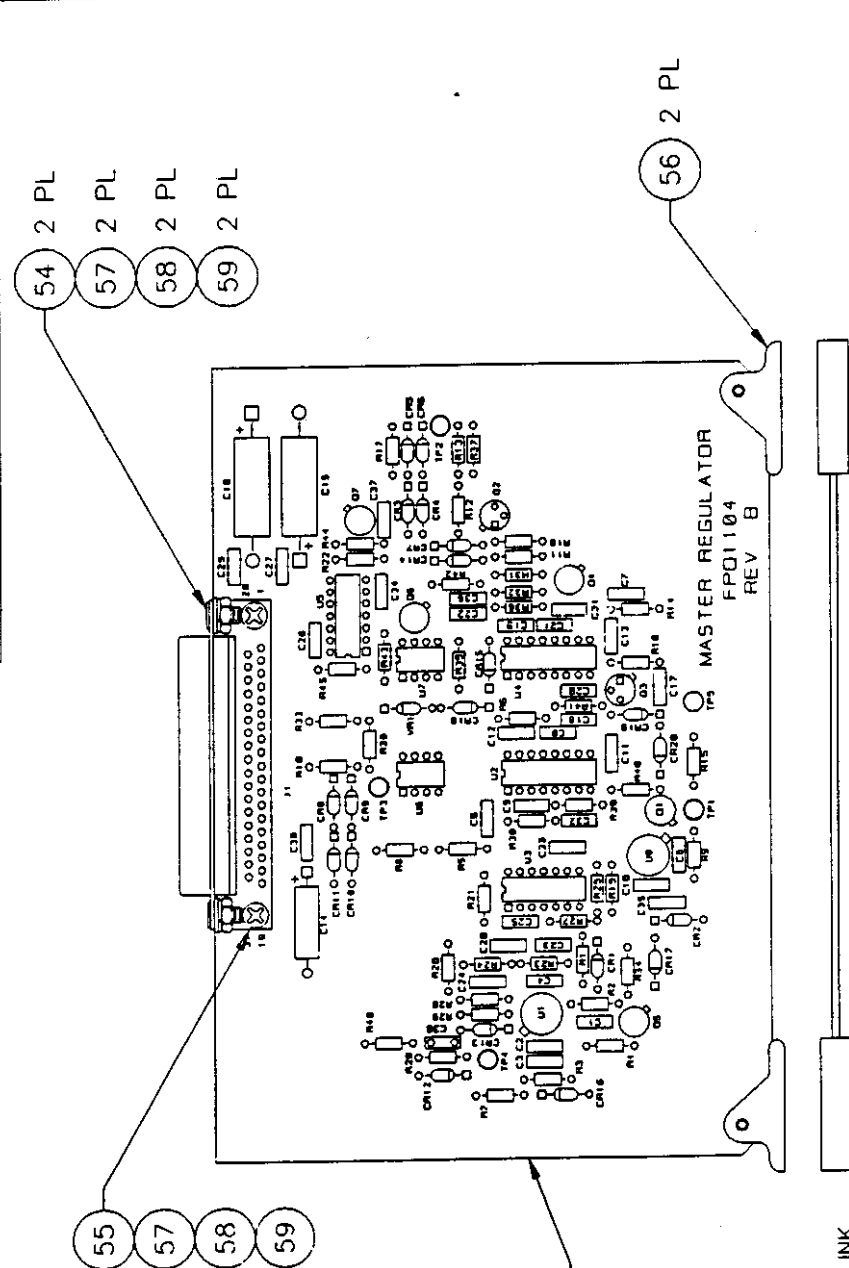
JAYCOR, HPM DIVISION
INTERFACE/CONTROL

5. USE SCHEMATIC NO. RC2004 FOR REFERENCE.
 4. MARK SERIAL NUMBER USING PERMANENT EPOXY INK.
 3. SQUARE PADS INDICATE PIN 1 OR CATHODE END.
 2. SOLDER PER MIL-STD-454, REQUIREMENT 5.
 1. COMPONENTS ARE IDENTIFIED BY REFERENCE DESIGNATOR.
- NOTES: UNLESS OTHERWISE SPECIFIED.

1 2 3 4

4 3 2 1

ZONE	REV	DESCRIPTION	DATE	APPROVED
	B	REVISED	01/05/98	



SEE SEPARATE PARTS LIST

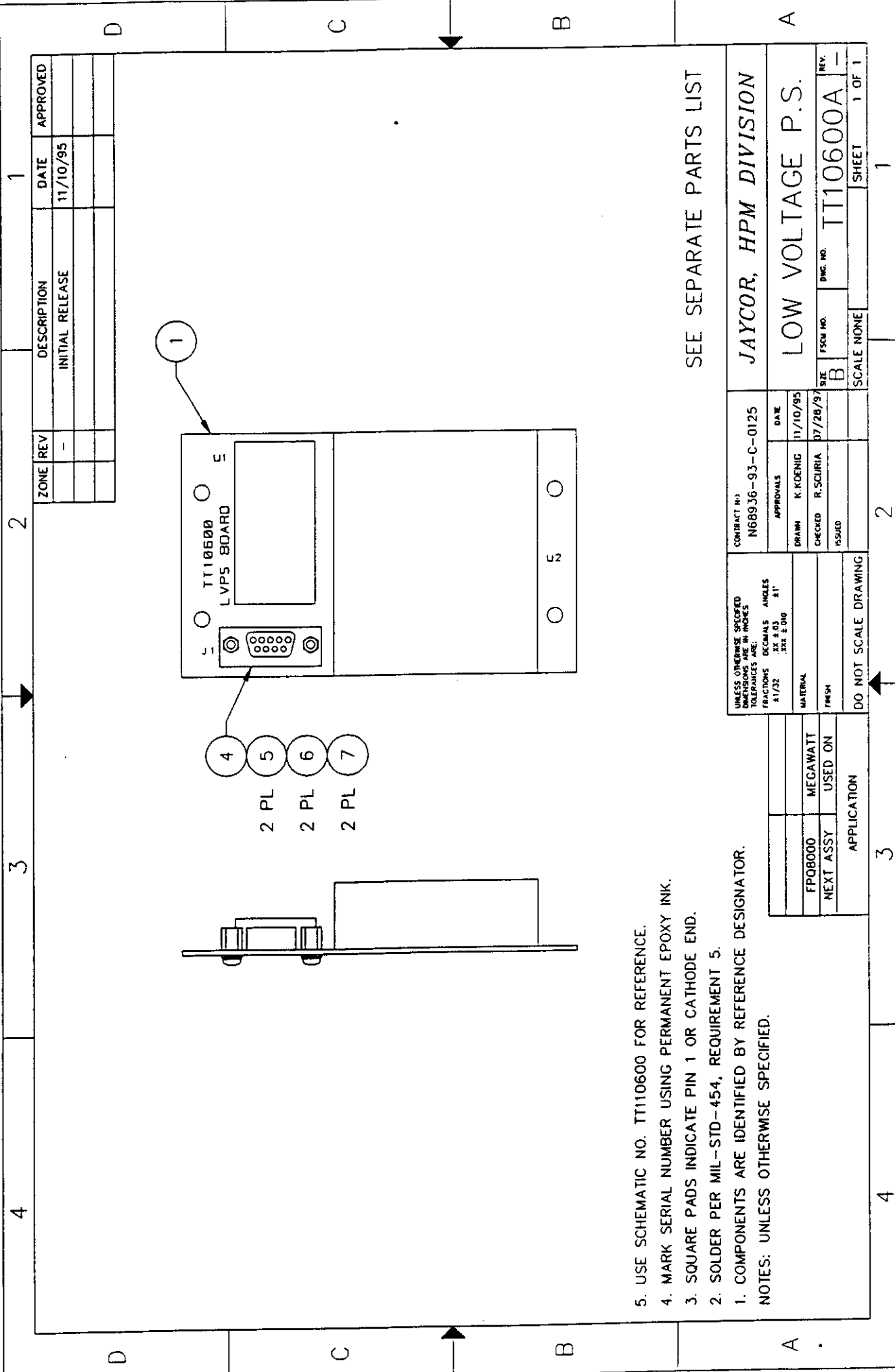
JAYCOR, HPM DIVISION
 MASTER REGULATOR

CONTRACT NO.	APPROVALS	DATE
	DRAWN K KOENIG	10/07/96
	CHECKED	
	ISSUED	

UNLESS OTHERWISE SPECIFIED DIMENSIONS ARE IN INCHES TOLERANCES ARE	FRACTIONS	DECIMALS	ANGLES
	±1/32	±0.01	±1°
MATERIAL			
FINISH			
DO NOT SCALE DRAWING			

NEXT ASSY	USED ON
APPLICATION	

5. USE SCHEMATIC NO. FPQ1104 FOR REFERENCE.
 4. MARK SERIAL NUMBER USING PERMANENT EPOXY INK.
 3. SQUARE PADS INDICATE PIN 1 OR CATHODE END.
 2. SOLDER PER MIL-STD-454, REQUIREMENT 5.
 1. COMPONENTS ARE IDENTIFIED BY REFERENCE DESIGNATOR.
- NOTES: UNLESS OTHERWISE SPECIFIED.



ZONE	REV	DESCRIPTION	DATE	APPROVED
	-	INITIAL RELEASE	11/10/95	

- 5. USE SCHEMATIC NO. TT10600 FOR REFERENCE.
 - 4. MARK SERIAL NUMBER USING PERMANENT EPOXY INK.
 - 3. SQUARE PADS INDICATE PIN 1 OR CATHODE END.
 - 2. SOLDER PER MIL-STD-454, REQUIREMENT 5.
 - 1. COMPONENTS ARE IDENTIFIED BY REFERENCE DESIGNATOR.
- NOTES: UNLESS OTHERWISE SPECIFIED.

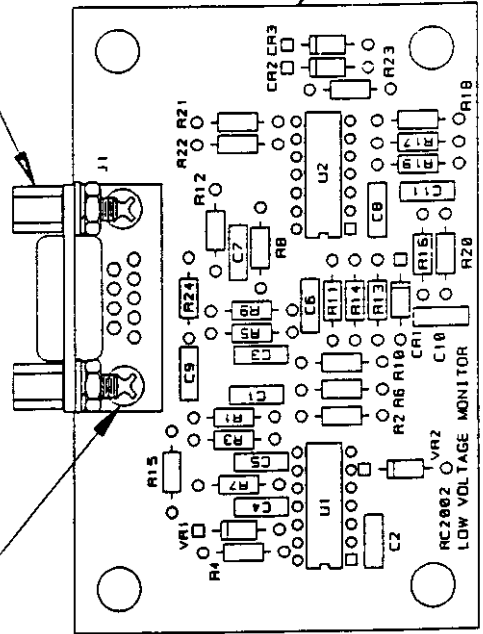
SEE SEPARATE PARTS LIST

UNLESS OTHERWISE SPECIFIED DIMENSIONS ARE IN INCHES TOLERANCES ARE:		CONTRACT NO.	
FRACTIONS	±.03	N68936-93-C-0125	
DECIMALS	±.01		
ANGLES	±1°		
	±.010		
MATERIAL		APPROVALS	
FP08000	MEGAWATT	DRAWN	K.KDENIG 11/10/95
NEXT ASSY	USED ON	CHECKED	R.SCURIA 07/28/95
APPLICATION		ISSUED	
		DATE	
		11/10/95	
DO NOT SCALE DRAWING		SCALE NONE	
3		2	
4		1	
JAYCOR, HPM DIVISION		LOW VOLTAGE P.S.	
REV.		TT10600A	
DWG. NO.		TT10600A	
SIZE		B	
SHEET		1 OF 1	

4 3 2 1

ZONE	REV	DESCRIPTION	DATE	APPROVED
	-	INITIAL RELEASE	08/14/97	

- 23 2 PL
- 24 2 PL
- 25 2 PL
- 26 2 PL



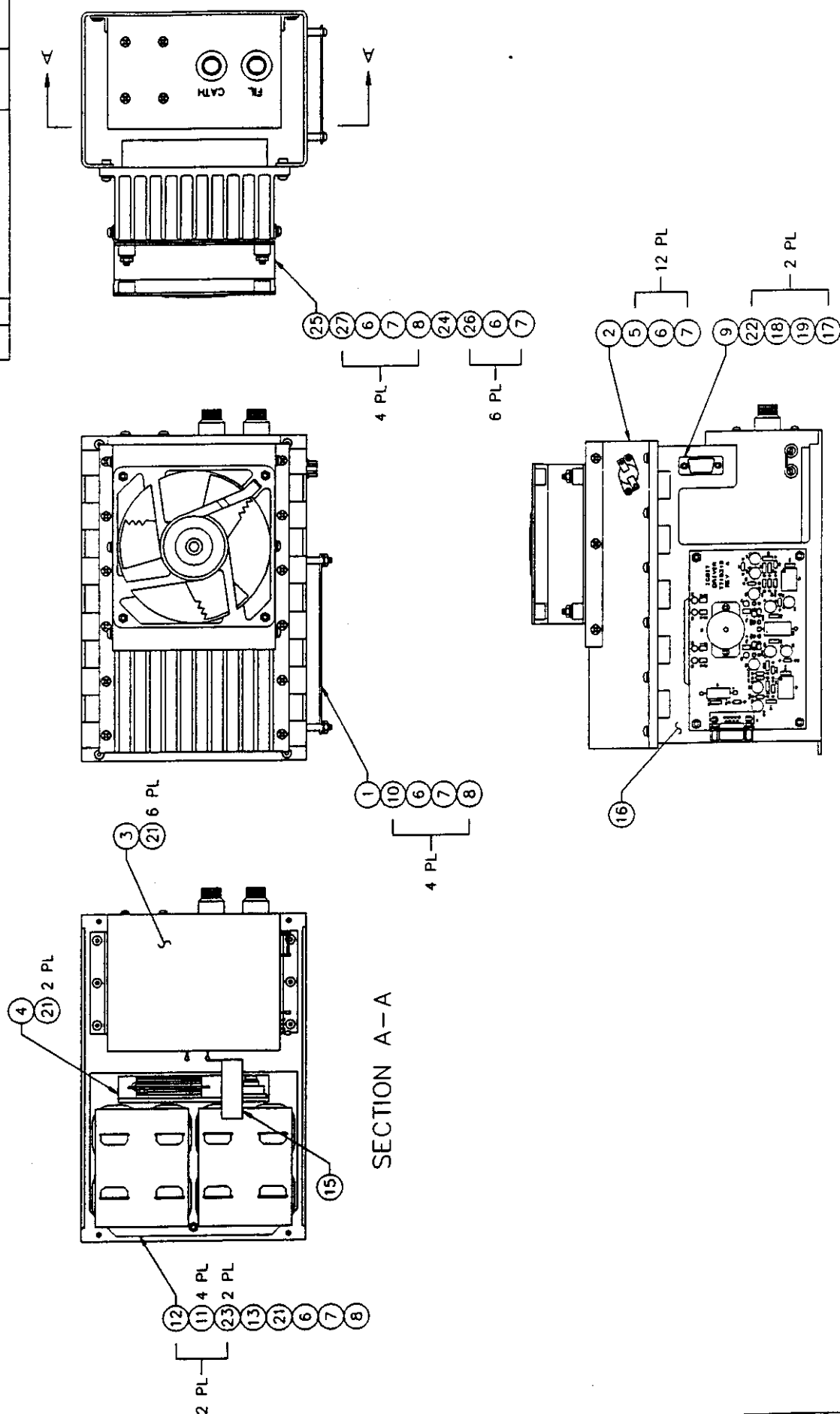
- 5. USE SCHEMATIC NO. RC2002 FOR REFERENCE.
 - 4. MARK SERIAL NUMBER USING PERMANENT EPOXY INK.
 - 3. SQUARE PADS INDICATE PIN 1 OR CATHODE END.
 - 2. SOLDER PER MIL-STD-454, REQUIREMENT 5.
 - 1. COMPONENTS ARE IDENTIFIED BY REFERENCE DESIGNATOR.
- NOTES: UNLESS OTHERWISE SPECIFIED.

SEE SEPARATE PARTS LIST

CONTRACT NO. UNLESS OTHERWISE SPECIFIED DIMENSIONS IN INCHES FRACTIONS DECIMALS ANGLES 1/32 32 1.01 1'		APPROVALS DRAWN K KOENIG CHECKED ISSUED		DATE 08/14/97	
MATERIAL RC2002 LOW VOLTAGE MONITOR		JAYCOR, HPM DIVISION LV MONITOR		SIZE B FSCU NO. B DMC NO. RC2002 REV. -	
NEXT ASSY APPLICATION		USED ON		SCALE NONE SHEET 1 OF 1	

4 3 2 1

ZONE	REV	DESCRIPTION	DATE	APPROVED
		INITIAL RELEASE	11/02/97	



SECTION A-A

SEE SEPARATE PARTS LIST

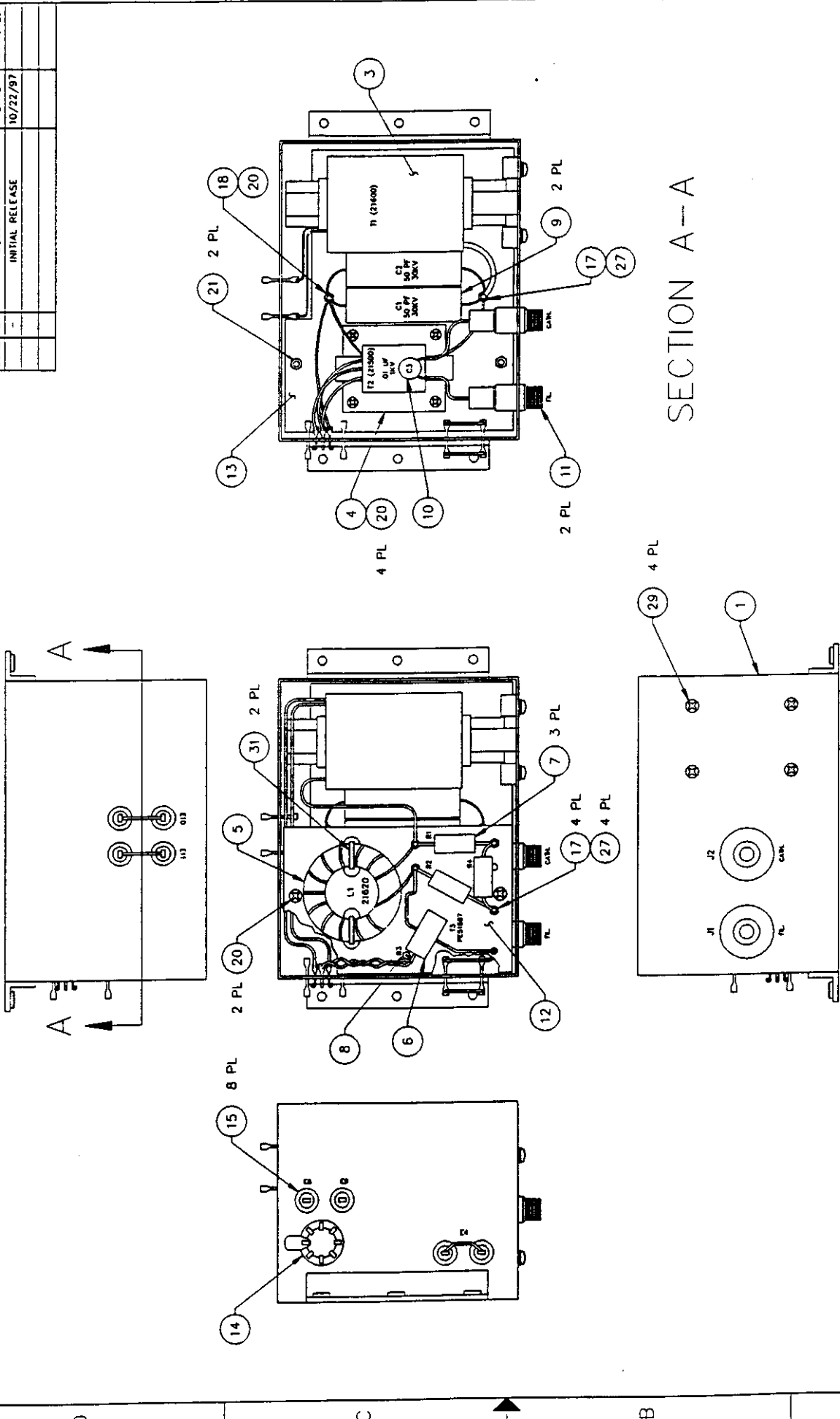
CONTRACT NO.		DATE	
APPROVALS		11/02/97	
DESIGN	K. KOCKING	DATE	
CHECKER		SCALE	1 OF 1
Welder			

UNLESS OTHERWISE SPECIFIED		DIMENSIONS IN INCHES	
FRACTIONS DECIMALS		ANGLES	
31/32 .0015		.125 .005	
MATERIAL		FINISH	
DO NOT SCALE DRAWING			

APPLICATION		SCALE NONE	
NEXT ASSY		USED ON	
JAYCOR, HPM DIVISION		PART NO. BA16000	
MODULATOR ASSY		SHEET 1 OF 1	

- 5. USE SCHEMATIC NO. BA16000 FOR REFERENCE.
 - 4. MARK SERIAL NUMBER USING PERMANENT EPOXY INK.
 - 3. SOLDER PADS INDICATE PIN 1 OR CATHODE END.
 - 2. SOLDER PER MIL-STD-454, REQUIREMENT 5.
 - 1. COMPONENTS ARE IDENTIFIED BY REFERENCE DESIGNATOR.
- NOTES: UNLESS OTHERWISE SPECIFIED.

ZONE	REV	DESCRIPTION	DATE	APPROVED
		INITIAL RELEASE	10/22/97	



SECTION A--A

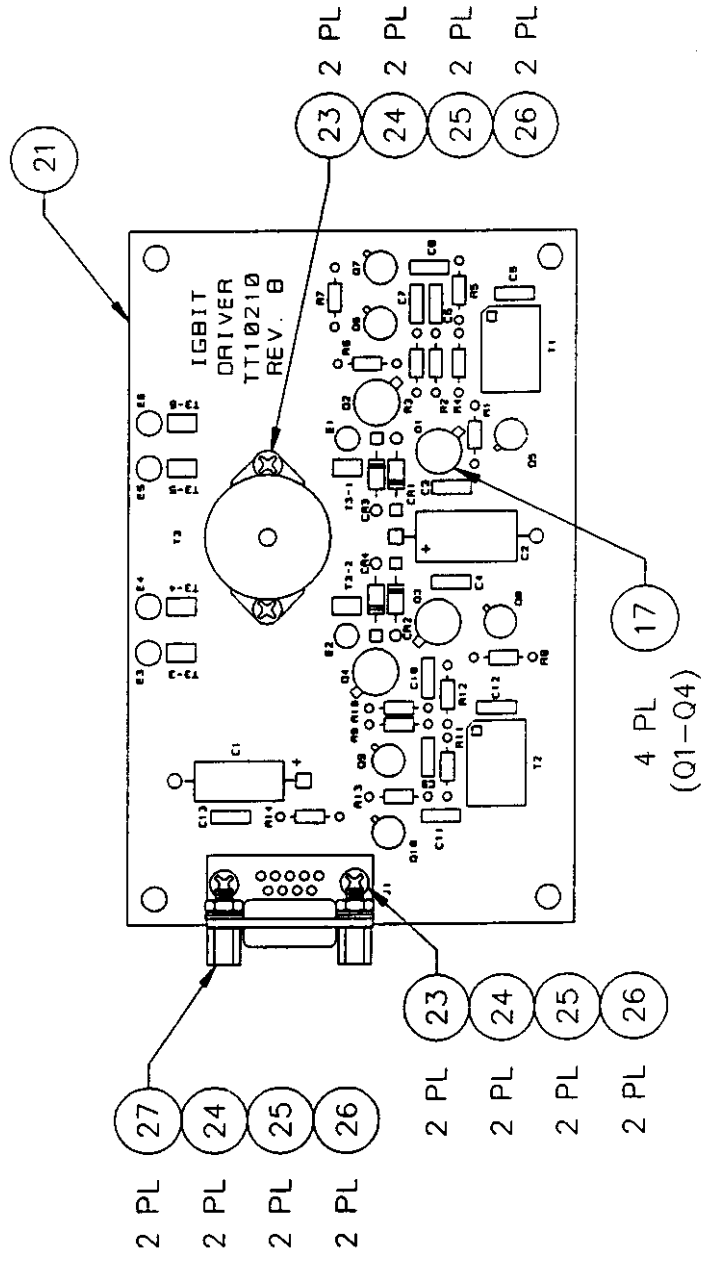
SEE SEPARATE PARTS LIST

CONTRACT NO. JAYCOR, HPM DIVISION		DATE 10/22/97	
DRAWN K. KOENIG		CHECKED [Signature]	
APPROVED [Signature]		TITLE OIL CAN ASSY	
PART NO. BA16500		SCALE 1 OF 1	
DO NOT SCALE DRAWING			

5. USE SCHEMATIC NO. BA16500 FOR REFERENCE.
 4. MARK SERIAL NUMBER USING PERMANENT EPOXY INK.
 3. SQUARE PADS INDICATE PIN 1 OR CATHODE END.
 2. SOLDER PER MIL-STD-454, REQUIREMENT 5.
 1. COMPONENTS ARE IDENTIFIED BY REFERENCE DESIGNATOR.
- NOTES: UNLESS OTHERWISE SPECIFIED.

4 3 2 1

ZONE	REV	DESCRIPTION	DATE	APPROVED
	B	REVISED	01/05/98	

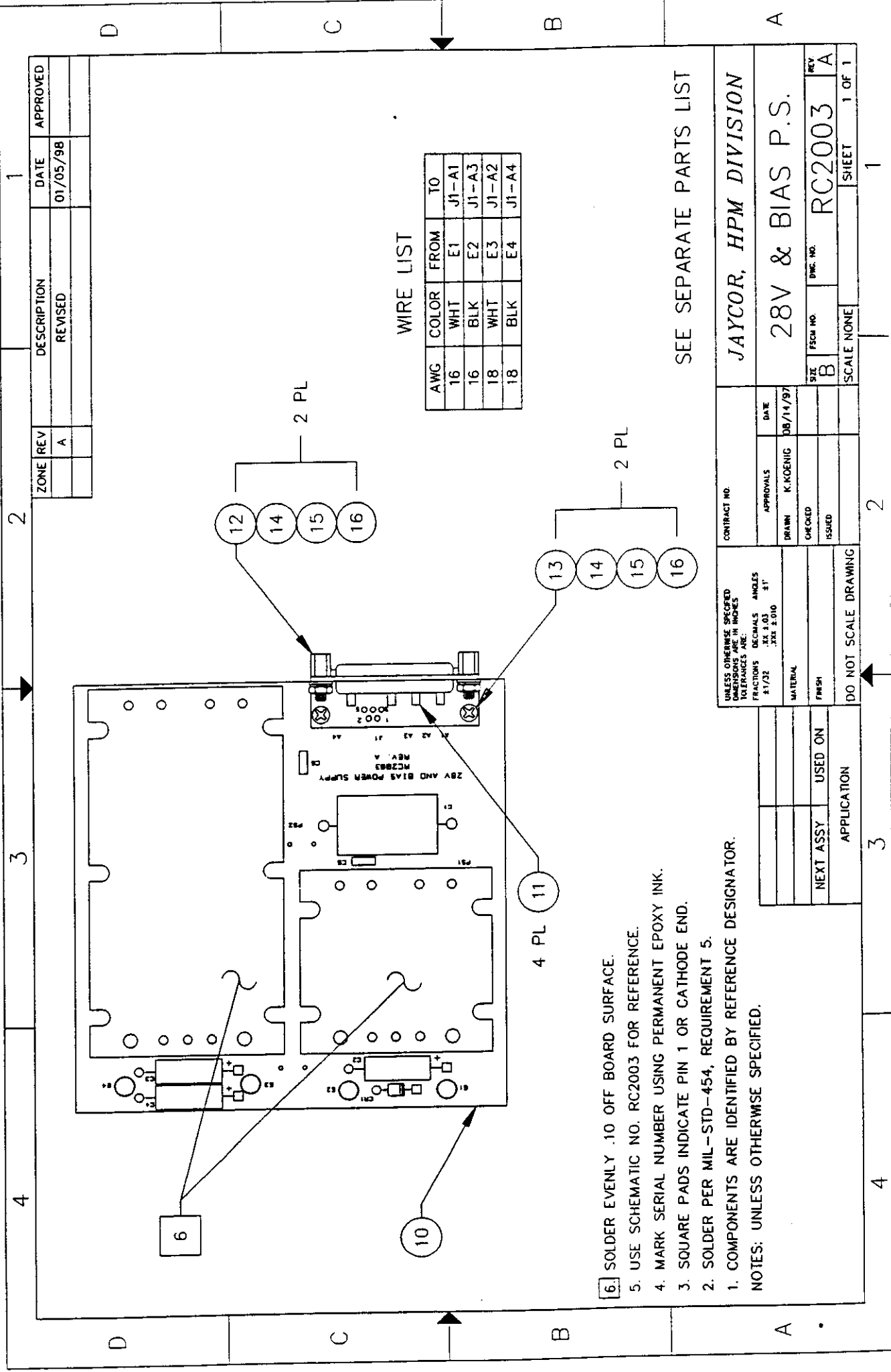


SEE SEPARATE PARTS LIST

- 5. USE SCHEMATIC NO. TT10210 FOR REFERENCE.
 - 4. MARK SERIAL NUMBER USING PERMANENT EPOXY INK.
 - 3. SQUARE PADS INDICATE PIN 1 OR CATHODE END.
 - 2. SOLDER PER MIL-STD-454, REQUIREMENT 5.
 - 1. COMPONENTS ARE IDENTIFIED BY REFERENCE DESIGNATOR.
- NOTES: UNLESS OTHERWISE SPECIFIED.

CONTRACT NO.		DATE	
UNLESS OTHERWISE SPECIFIED DIMENSIONS ARE IN INCHES TOLERANCES ARE: FRACTIONS .XX ±.03 DECIMALS .XX ±.03 ANGLES .XX ±.1°		11/10/95	
MATERIAL		APPROVALS	DATE
FINISH		DRAWN K. KIDENIC	
DO NOT SCALE DRAWING		CHECKED	
NEXT ASSY		ISSUED	
APPLICATION		SIZE	REV
		B	B
		FSCH NO.	DWG. NO.
			TT10210
		SCALE	SHEET
		NONE	1 OF 1

4 3 2 1



ZONE	REV	DESCRIPTION	DATE	APPROVED
	A	REVISED	01/05/98	

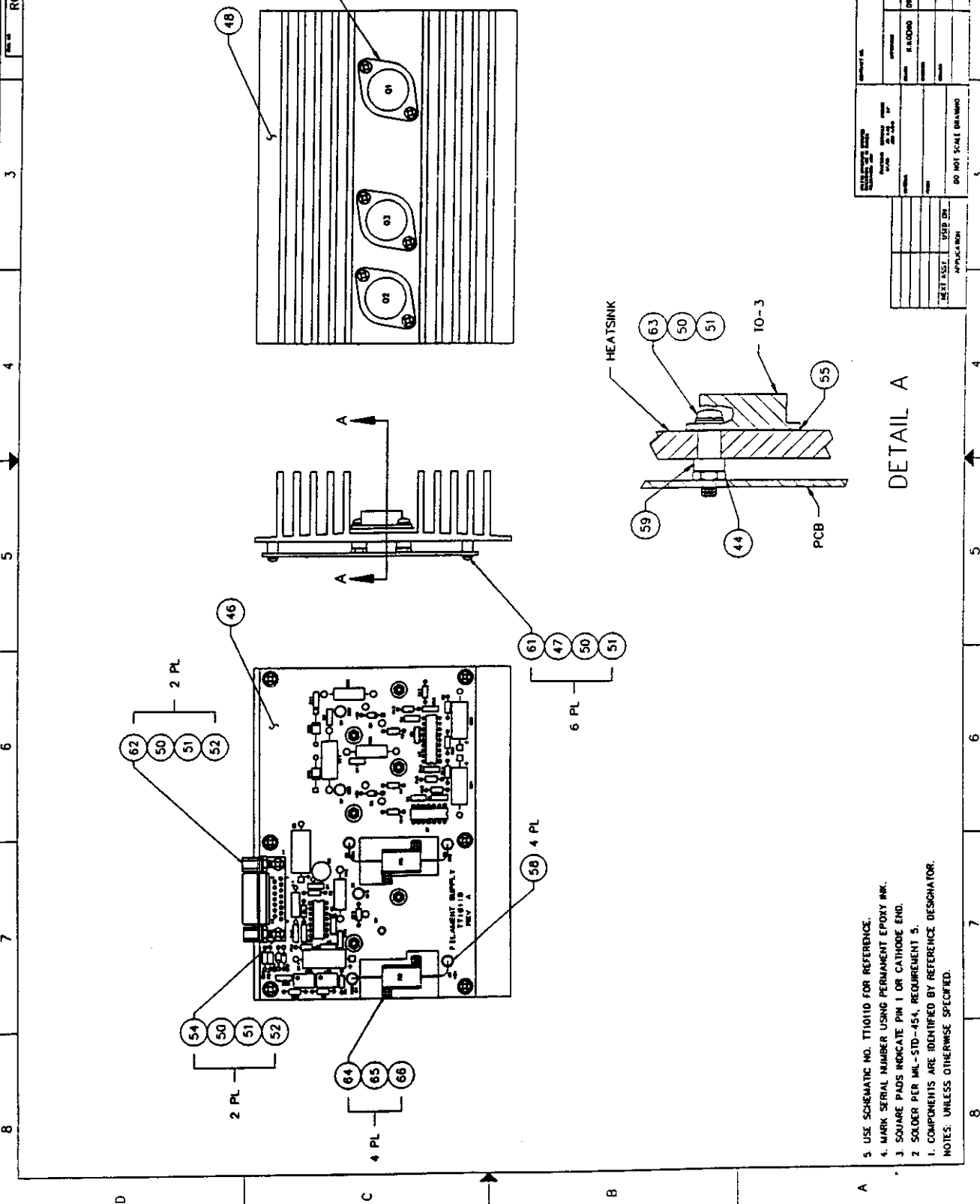
AWG	COLOR	FROM	TO
16	WHT	E1	J1-A1
16	BLK	E2	J1-A3
18	WHT	E3	J1-A2
18	BLK	E4	J1-A4

- 6. SOLDER EVENLY .10 OFF BOARD SURFACE.
 - 5. USE SCHEMATIC NO. RC2003 FOR REFERENCE.
 - 4. MARK SERIAL NUMBER USING PERMANENT EPOXY INK.
 - 3. SQUARE PADS INDICATE PIN 1 OR CATHODE END.
 - 2. SOLDER PER MIL-STD-454, REQUIREMENT 5.
 - 1. COMPONENTS ARE IDENTIFIED BY REFERENCE DESIGNATOR.
- NOTES: UNLESS OTHERWISE SPECIFIED.

SEE SEPARATE PARTS LIST

CONTRACT NO. UNLESS OTHERWISE SPECIFIED DIMENSIONS ARE IN INCHES TOLERANCES ARE:		CONTRACT NO. APPROVALS	
FRACTIONS 1/32 DECIMALS .XX 1.03 ANGLES .XX 1.010	MATERIAL FINISH	DRAWN K.KOENIG CHECKED ISSUED	DATE DB/11/97
NEXT ASSY USED ON APPLICATION		DO NOT SCALE DRAWING	
JAYCOR, HPM DIVISION 28V & BIAS P.S.		SIZE B SCALE NONE	
REV A		DWG. NO. RC2003	
SHEET 1 OF 1		1	

ZONE	RC-4000
DESCRIPTION	
DATE	
APPROVED	
REVISION	
RELEASE	



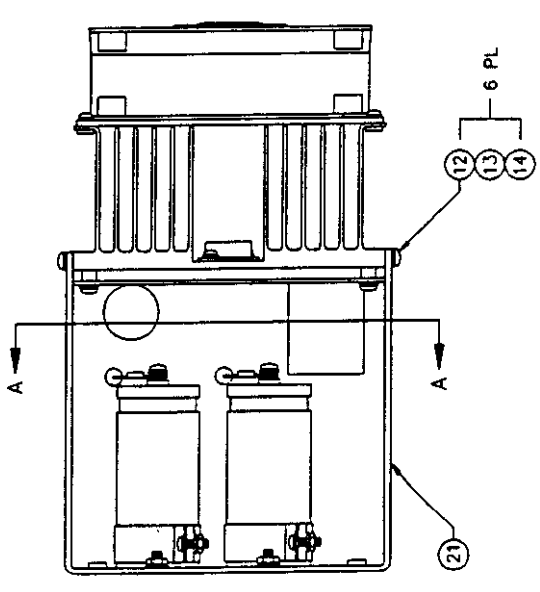
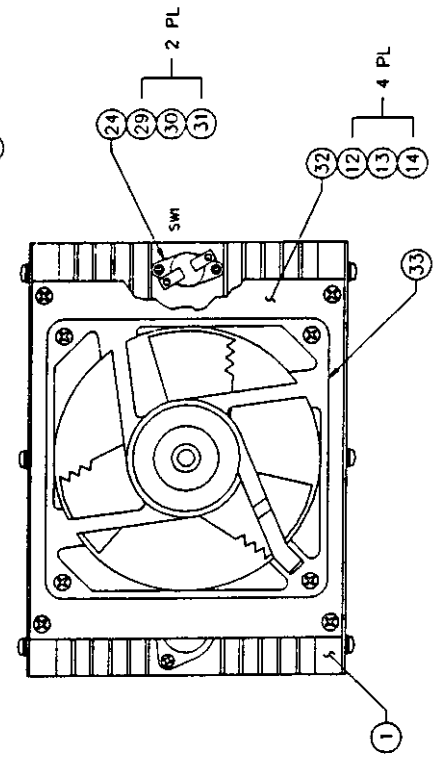
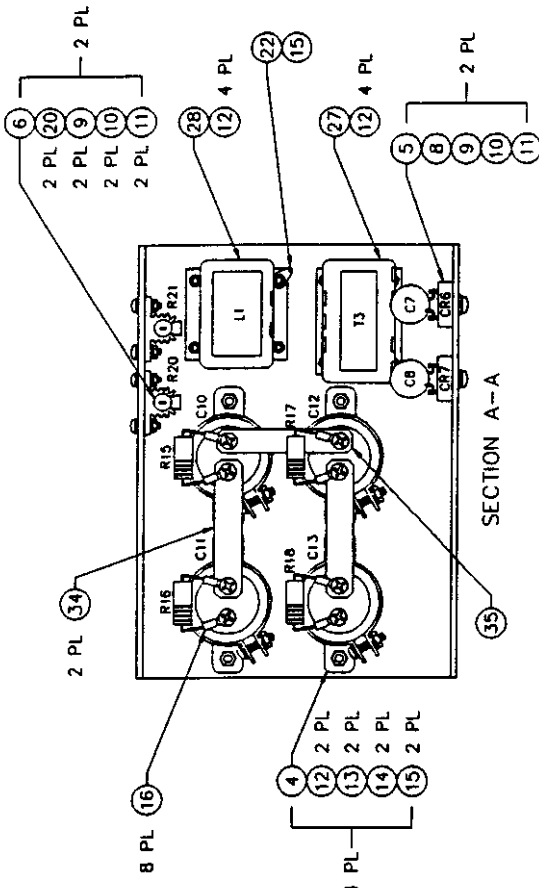
SEE SEPARATE PARTS LIST

PROJECT NO.	
DATE	
DESIGNED BY	
DATE	
APPROVED BY	
DATE	
SCALE	1 OF 1
RC-4000	

DETAIL A

- 5. USE SCHEMATIC NO. T110110 FOR REFERENCE.
 - 4. MARK SERIAL NUMBER USING PERMANENT EPOXY INK.
 - 3. SQUARE PADS INDICATE PIN 1 OR CATHODE END.
 - 2. SOLDER PER MIL-STD-454, REQUIREMENT 5.
 - 1. COMPONENTS ARE IDENTIFIED BY REFERENCE DESIGNATOR.
- NOTES: UNLESS OTHERWISE SPECIFIED.

FORM NO.	FPQ3000	REV.	1
DATE		APPROVED	
DESCRIPTION		DATE	
ISSUE		REVISION	



SEE SEPARATE PARTS LIST

JAYCOR HPM DIVISION	
DC-DC CONV ASSY	
DATE	08/27/73
REV.	1
FORM NO.	FPQ3000
REV.	1

5. USE SCHEMATIC NO. TT20130 FOR REFERENCE.
 4. MARK SERIAL NUMBER USING PERMANENT EPOXY INK.
 3. SQUARE PADS INDICATE PIN 1 OR CATHODE END.
 2. SOLDER PER MIL-STD-454, REQUIREMENT 5.
 1. COMPONENTS ARE IDENTIFIED BY REFERENCE DESIGNATOR.
- NOTES: UNLESS OTHERWISE SPECIFIED.

