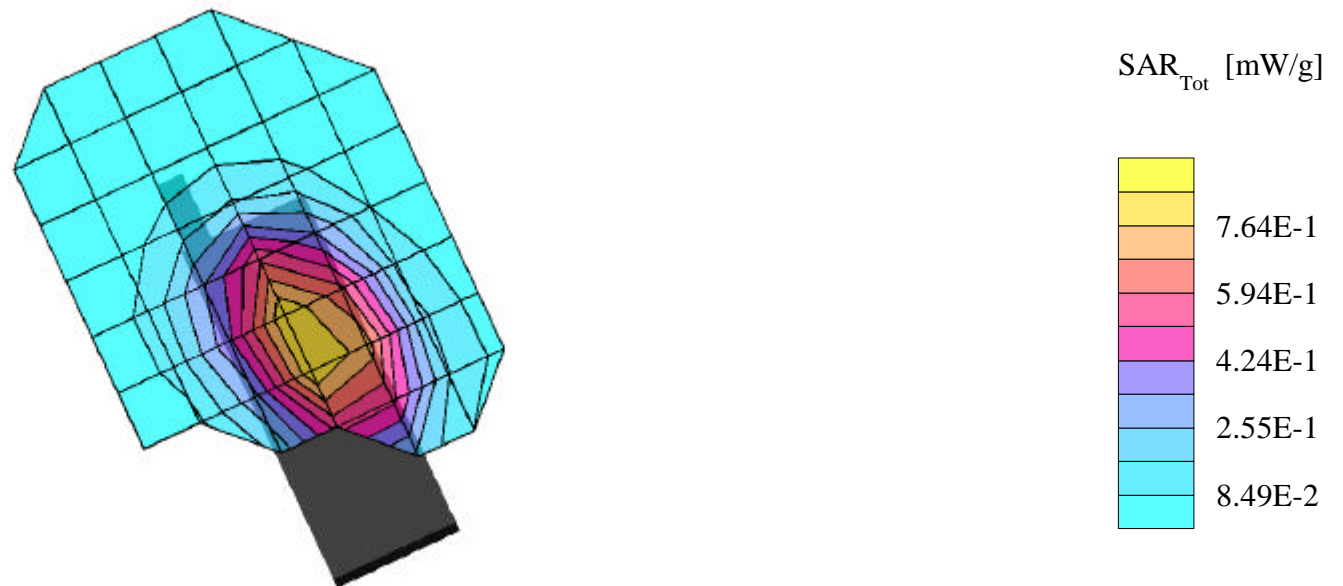


# PANASONIC FCC ID: NWJ10A007A -- FM Head SAR

Generic Twin Phantom; Right Hand Section; Probe: ET3DV6 - SN1560 -- Probe Cal Date 20/02/01  
Med. Parameters 835 MHz Brain:  $\sigma = 0.90$  mho/m  $\epsilon_r = 41.5$   $\rho = 1.00$  g/cm<sup>3</sup>; Antenna Position -- Out; Crest Factor 1.0  
**SAR (1g): 0.958 mW/g, SAR (10g): 0.683 mW/g**

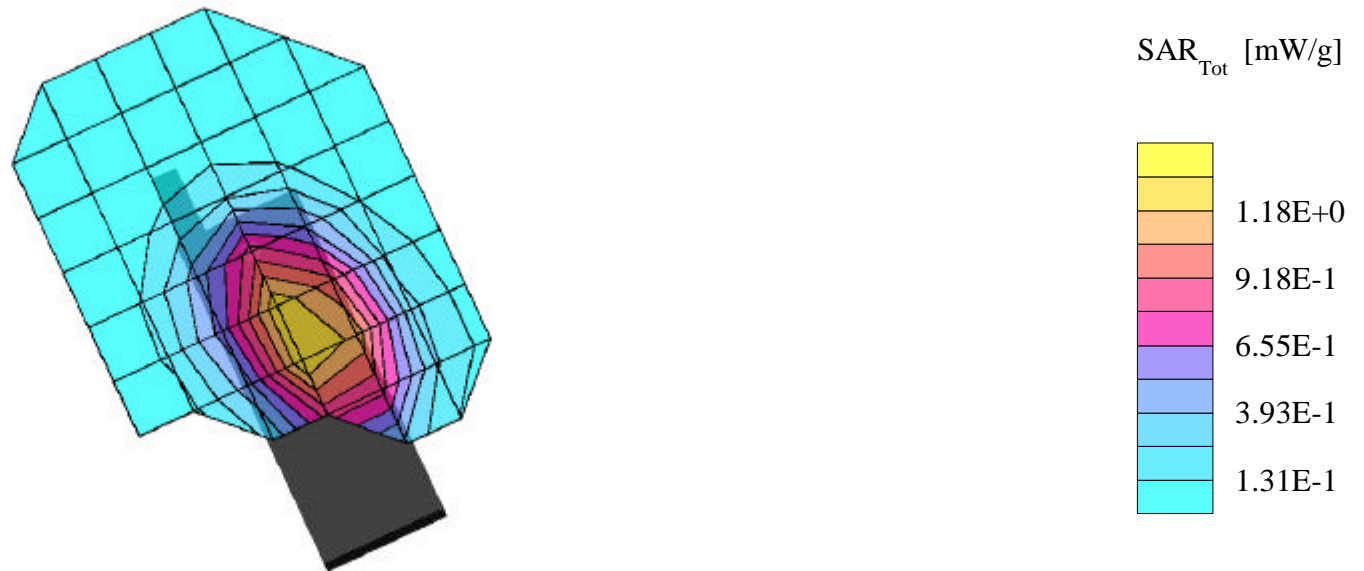
PANASONIC Tri-mode Model: EB-TX320  
FM Mode, Ch.0991 [824.04MHz]  
Conducted Power = 22.8dBm  
Test Date -- 05-07-2001



# PANASONIC FCC ID: NWJ10A007A -- FM Head SAR

Generic Twin Phantom; Right Hand Section; Probe: ET3DV6 - SN1560 -- Probe Cal Date 20/02/01  
Med. Parameters 835 MHz Brain:  $\sigma = 0.90$  mho/m  $\epsilon_r = 41.5$   $\rho = 1.00$  g/cm<sup>3</sup>; Antenna Position -- Out; Crest Factor 1.0  
**SAR (1g): 1.46 mW/g, SAR (10g): 1.04 mW/g**

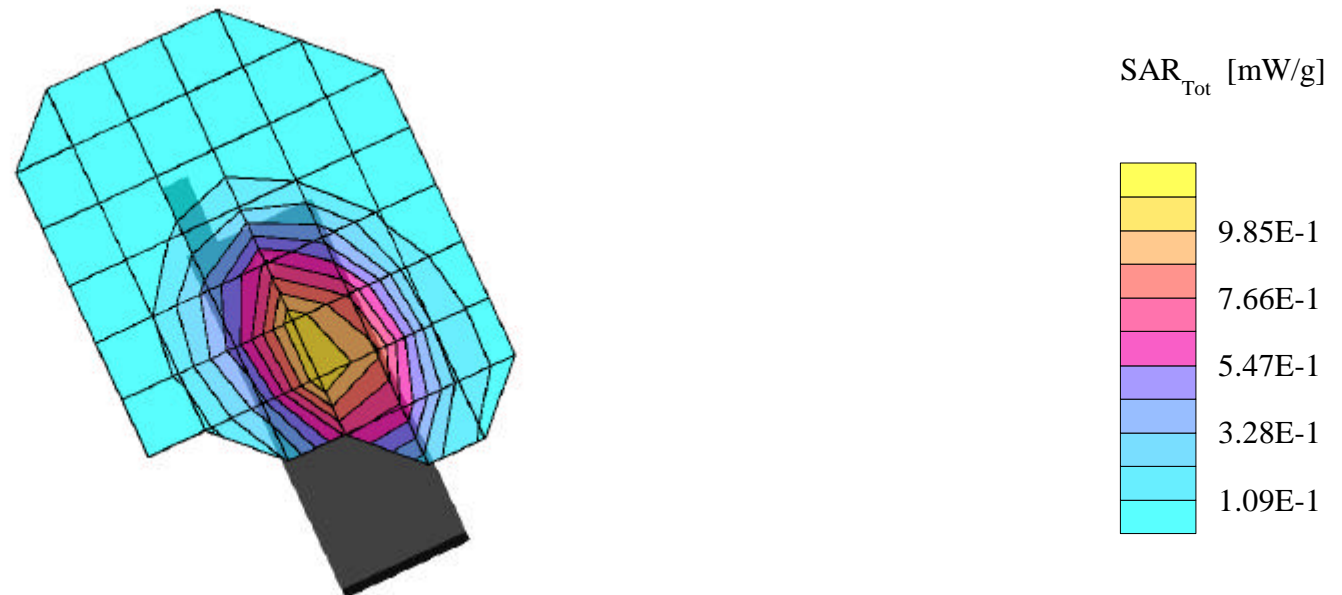
PANASONIC Tri-mode Model: EB-TX320  
FM Mode, Ch.0383 [836.49MHz]  
Conducted Power = 22.8dBm  
Test Date -- 05-07-2001



# PANASONIC FCC ID: NWJ10A007A -- FM Head SAR

Generic Twin Phantom; Right Hand Section; Probe: ET3DV6 - SN1560 -- Probe Cal Date 20/02/01  
Med. Parameters 835 MHz Brain:  $\sigma = 0.90$  mho/m  $\epsilon_r = 41.5$   $\rho = 1.00$  g/cm<sup>3</sup>; Antenna Position -- Out; Crest Factor 1.0  
**SAR (1g): 1.21 mW/g, SAR (10g): 0.849 mW/g**

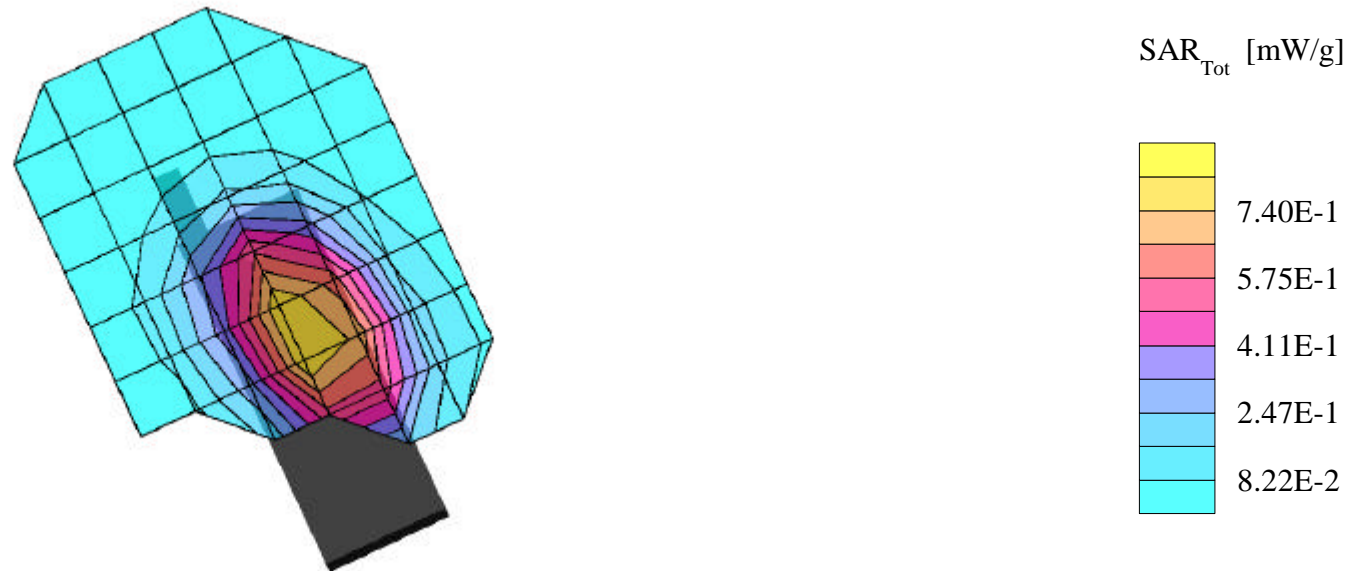
PANASONIC Tri-mode Model: EB-TX320  
FM Mode, Ch.0799 [848.97MHz]  
Conducted Power = 22.8dBm  
Test Date -- 05-07-2001



# PANASONIC FCC ID:NWJ10A007A -- Cellular TDMA Head SAR

Generic Twin Phantom; Right Hand Section; Probe: ET3DV6 - SN1560 -- Probe Cal Date 20/02/01  
Med. Parameters 835 MHz Brain:  $\sigma = 0.90$  mho/m  $\epsilon_r = 41.5$   $\rho = 1.00$  g/cm<sup>3</sup>; Antenna Position -- Out; Crest Factor 3.0  
**SAR (1g): 0.921 mW/g, SAR (10g): 0.653 mW/g**

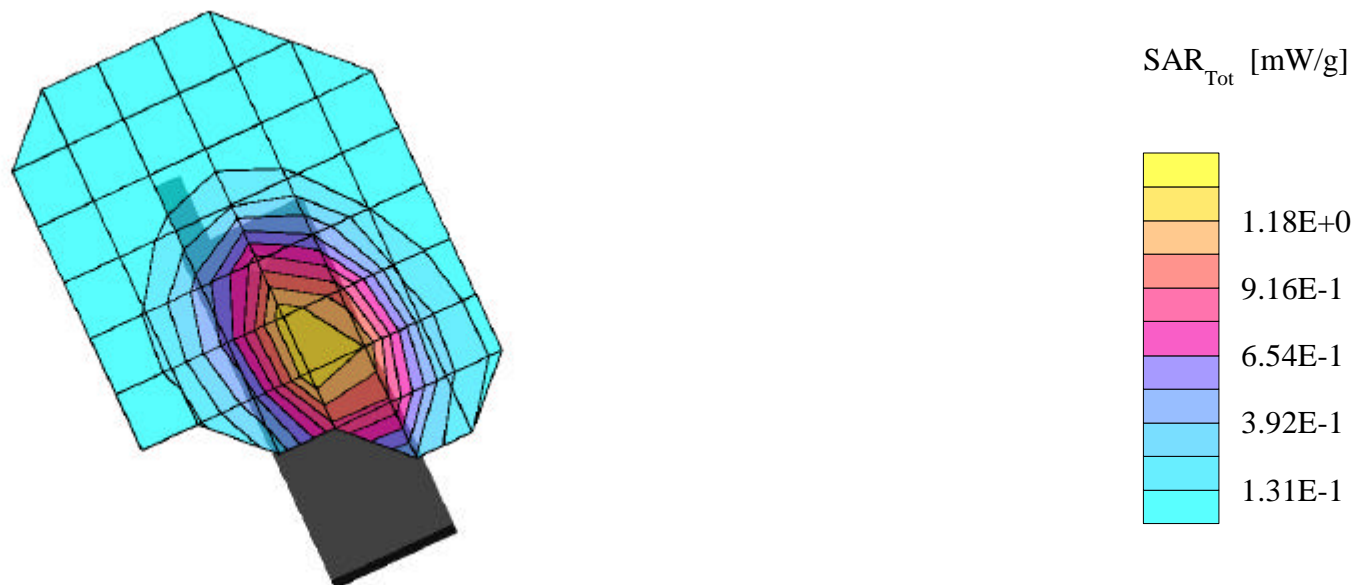
PANASONIC Tri-mode Model: EB-TX320  
Cellular TDMA Mode, Ch.0991 [824.04MHz]  
Conducted Power = 27.7dBm  
Test Date -- 05-07-2001



# PANASONIC FCC ID:NWJ10A007A -- Cellular TDMA Head SAR

Generic Twin Phantom; Right Hand Section; Probe: ET3DV6 - SN1560 -- Probe Cal Date 20/02/01  
Med. Parameters 835 MHz Brain:  $\sigma = 0.90$  mho/m  $\epsilon_r = 41.5$   $\rho = 1.00$  g/cm<sup>3</sup>; Antenna Position -- Out; Crest Factor 3.0  
**SAR (1g): 1.48 mW/g, SAR (10g): 1.05 mW/g**

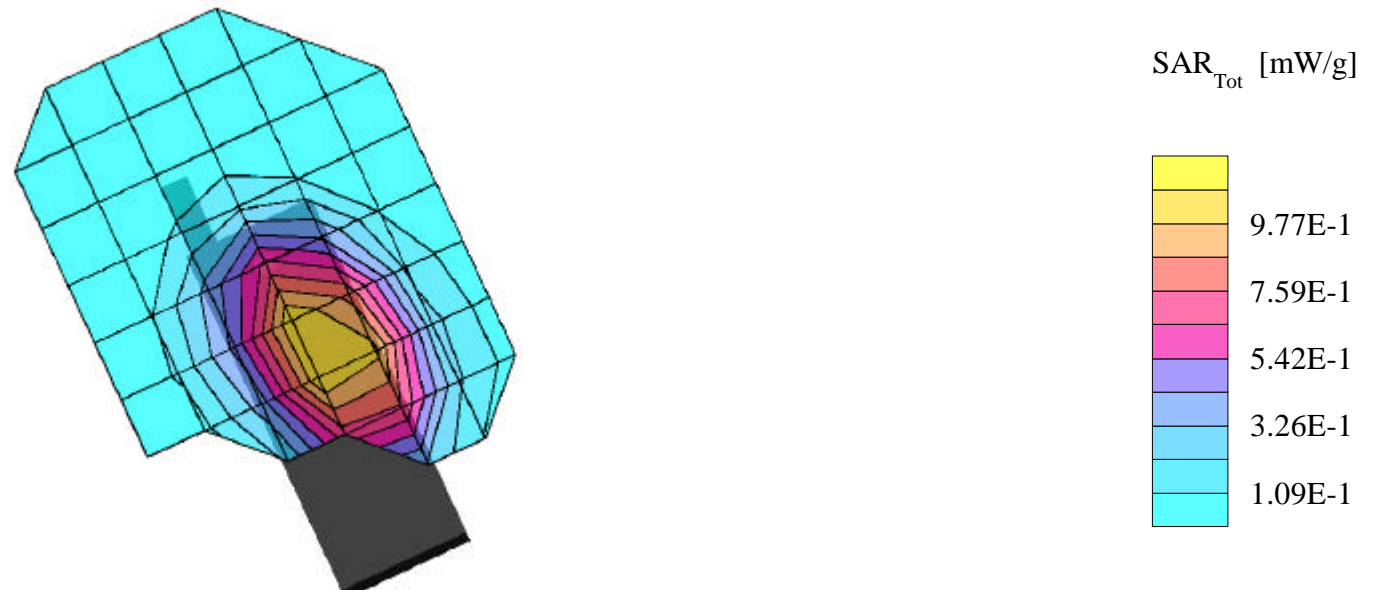
PANASONIC Tri-mode Model: EB-TX320  
Cellular TDMA Mode, Ch.0383 [836.49MHz]  
Conducted Power = 27.7dBm  
Test Date -- 05-07-2001



# PANASONIC FCC ID:NWJ10A007A -- Cellular TDMA Head SAR

Generic Twin Phantom; Right Hand Section; Probe: ET3DV6 - SN1560 -- Probe Cal Date 20/02/01  
Med. Parameters 835 MHz Brain:  $\sigma = 0.90$  mho/m  $\epsilon_r = 41.5$   $\rho = 1.00$  g/cm<sup>3</sup>; Antenna Position -- Out; Crest Factor 3.0  
**SAR (1g): 1.23 mW/g, SAR (10g): 0.860 mW/g**

PANASONIC Tri-mode Model: EB-TX320  
Cellular TDMA Mode, Ch.0799 [848.97MHz]  
Conducted Power = 27.7dBm  
Test Date -- 05-07-2001



# PANASONIC FCC ID:NWJ10A007A -- PCS TDMA Head SAR

Generic Twin Phantom; Right Hand Section; Probe: ET3DV6 - SN1560 -- Probe Cal Date 20/02/01

Med. Parameters 1900 MHz Brain:  $\sigma = 1.82$  mho/m  $\epsilon_r = 40.4$   $\rho = 1.00$  g/cm<sup>3</sup>; Antenna Position -- Out; Crest Factor 3.0

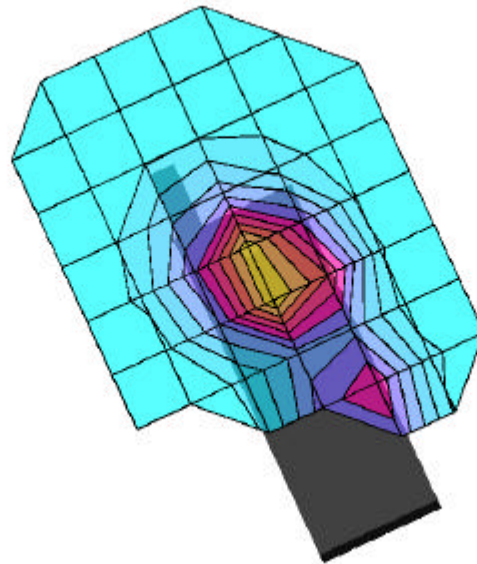
**SAR (1g): 1.50 mW/g**, SAR (10g): 0.853 mW/g

PANASONIC Tri-mode Model: EB-TX320

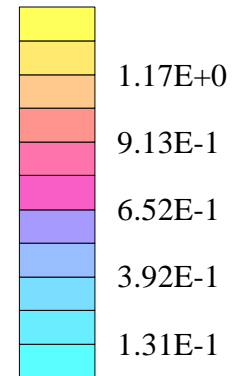
PCS TDMA Mode, Ch.0002 [1851MHz]

Conducted Power = 26.6dBm

Test Date -- 05-09-2001



SAR<sub>Tot</sub> [mW/g]



# PANASONIC FCC ID:NWJ10A007A -- PCS TDMA Head SAR

Generic Twin Phantom; Right Hand Section; Probe: ET3DV6 - SN1560 -- Probe Cal Date 20/02/01

Med. Parameters 1900 MHz Brain:  $\sigma = 1.82$  mho/m  $\epsilon_r = 40.4$   $\rho = 1.00$  g/cm<sup>3</sup>; Antenna Position -- Out; Crest Factor 3.0

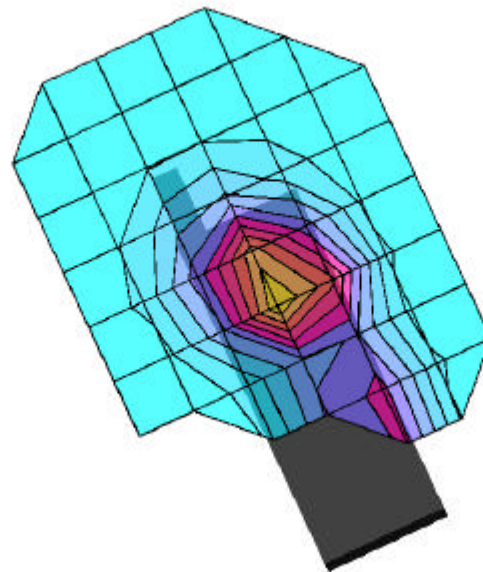
**SAR (1g): 1.40 mW/g**, SAR (10g): 0.801 mW/g

PANASONIC Tri-mode Model: EB-TX320

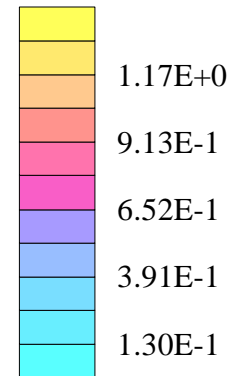
PCS TDMA Mode, Ch.1000 [1880MHz]

Conducted Power = 26.6dBm

Test Date -- 05-09-2001



SAR<sub>Tot</sub> [mW/g]





# PANASONIC FCC ID:NWJ10A007A -- PCS TDMA Head SAR

Generic Twin Phantom; Right Hand Section; Probe: ET3DV6 - SN1560 -- Probe Cal Date 20/02/01

Med. Parameters 1900 MHz Brain:  $\sigma = 1.82$  mho/m  $\epsilon_r = 40.4$   $\rho = 1.00$  g/cm<sup>3</sup>; Antenna Position -- Out; Crest Factor 3.0

**SAR (1g): 1.34 mW/g, SAR (10g): 0.757 mW/g**

PANASONIC Tri-mode Model: EB-TX320

PCS TDMA Mode, Ch.1998 [1910MHz]

Conducted Power = 26.6dBm

Test Date -- 05-09-2001

