

# PANASONIC FCC ID:NWJ10A007A -- FM Body SAR

Generic Twin Phantom; Flat Section; Probe: ET3DV6 - SN1560 -- Probe Cal Date 20/02/01

Med. Parameters 835 MHz Muscle:  $\sigma = 0.95$  mho/m  $\epsilon_r = 56.2$   $\rho = 1.00$  g/cm<sup>3</sup>; Antenna Position -- Out; Crest Factor 1.0

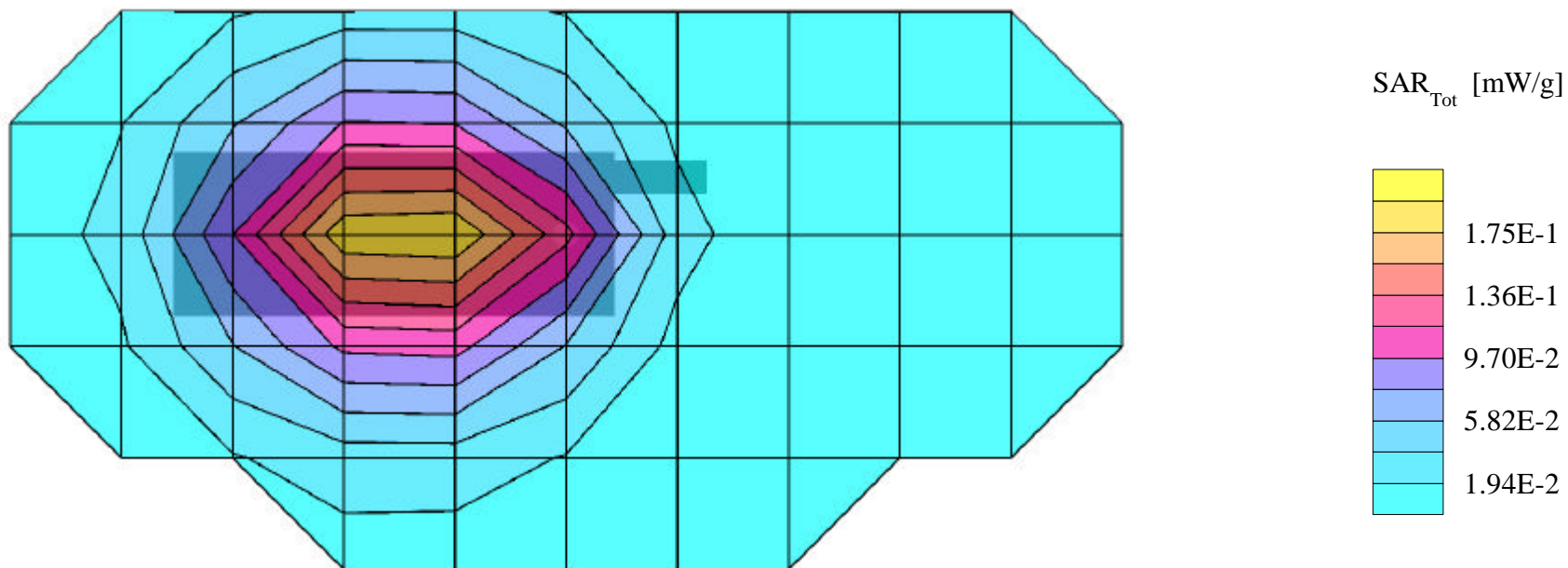
**SAR (1g): 0.198 mW/g, SAR (10g): 0.143 mW/g**

PANASONIC Tri-mode Model: EB-TX320

FM Mode, Ch.0991 [824.04MHz]

Conducted Power = 22.8dBm; Spacing = 2.0cm from flat phantom, w/beltclip

Test Date -- 05-08-2001



# PANASONIC FCC ID: NWJ10A007A -- FM Body SAR

Generic Twin Phantom; Flat Section; Probe: ET3DV6 - SN1560 -- Probe Cal Date 20/02/01

Med. Parameters 835 MHz Muscle:  $\sigma = 0.95$  mho/m  $\epsilon_r = 56.2$   $\rho = 1.00$  g/cm<sup>3</sup>; Antenna Position -- Out; Crest Factor 1.0

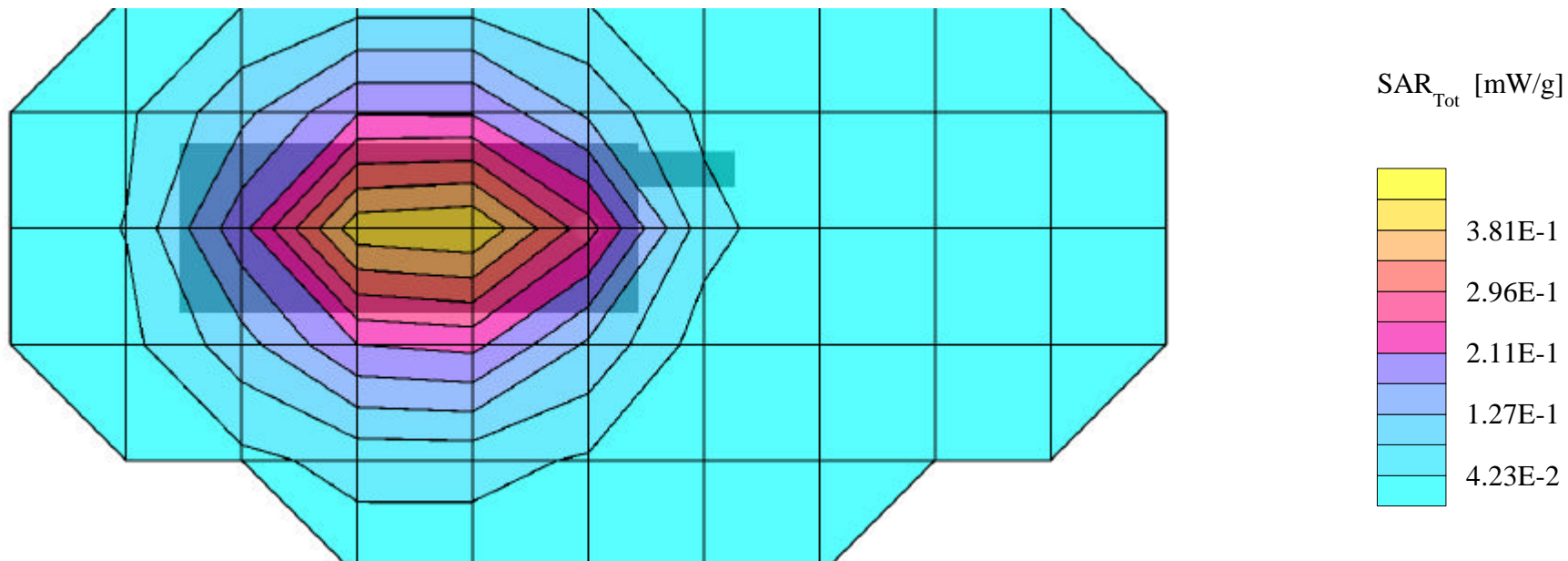
**SAR (1g): 0.437 mW/g, SAR (10g): 0.317 mW/g**

PANASONIC Tri-mode Model: EB-TX320

FM Mode, Ch.0383 [836.49MHz]

Conducted Power = 22.8dBm; Spacing = 2.0cm from flat phantom, w/beltclip

Test Date -- 05-08-2001



# PANASONIC FCC ID:NWJ10A007A -- FM Body SAR

Generic Twin Phantom; Flat Section; Probe: ET3DV6 - SN1560 -- Probe Cal Date 20/02/01

Med. Parameters 835 MHz Muscle:  $\sigma = 0.95$  mho/m  $\epsilon_r = 56.2$   $\rho = 1.00$  g/cm<sup>3</sup>; Antenna Position -- Out; Crest Factor 1.0

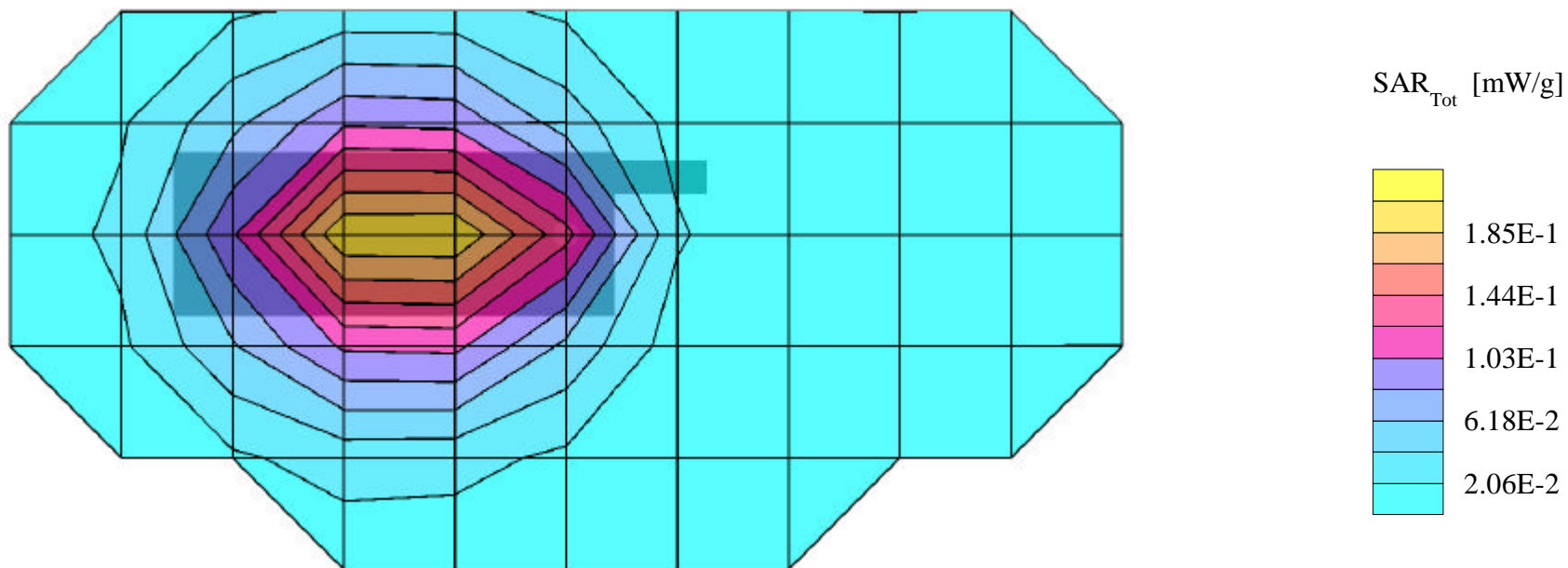
**SAR (1g): 0.213 mW/g, SAR (10g): 0.153 mW/g**

PANASONIC Tri-mode Model: EB-TX320

FM Mode, Ch.0799 [848.97MHz]

Conducted Power = 22.8dBm; Spacing = 2.0cm from flat phantom, w/beltclip

Test Date -- 05-08-2001



# PANASONIC FCC ID:NWJ10A007A -- Cellular TDMA Body SAR

Generic Twin Phantom; Flat Section; Probe: ET3DV6 - SN1560 -- Probe Cal Date 20/02/01

Med. Parameters 835 MHz Muscle:  $\sigma = 0.95$  mho/m  $\epsilon_r = 56.2$   $\rho = 1.00$  g/cm<sup>3</sup>; Antenna Position -- Out; Crest Factor 3.0

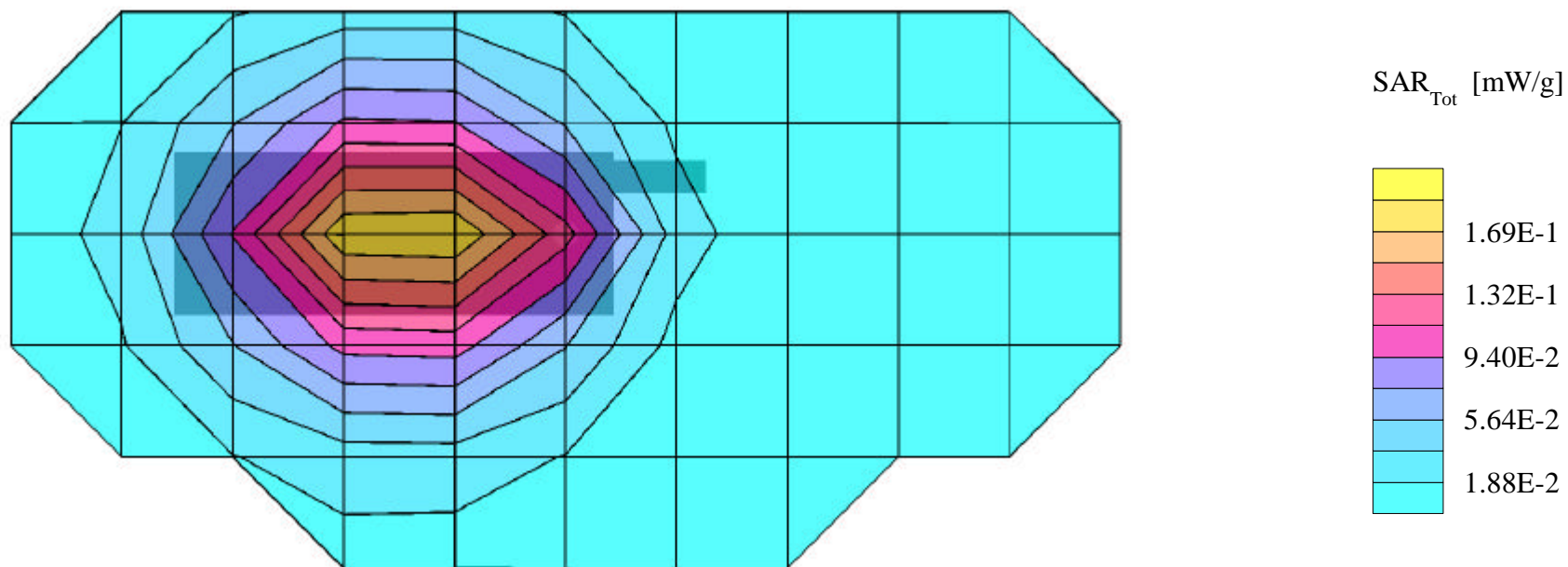
**SAR (1g): 0.187 mW/g, SAR (10g): 0.136 mW/g**

PANASONIC Tri-mode Model: EB-TX320

Cellular TDMA Mode, Ch.0991 [824.04MHz]

Conducted Power = 27.7dBm; Spacing = 2.0cm from flat phantom, w/beltclip

Test Date -- 05-08-2001



# PANASONIC FCC ID:NWJ10A007A -- Cellular TDMA Body SAR

Generic Twin Phantom; Flat Section; Probe: ET3DV6 - SN1560 -- Probe Cal Date 20/02/01

Med. Parameters 835 MHz Muscle:  $\sigma = 0.95$  mho/m  $\epsilon_r = 56.2$   $\rho = 1.00$  g/cm<sup>3</sup>; Antenna Position -- Out; Crest Factor 3.0

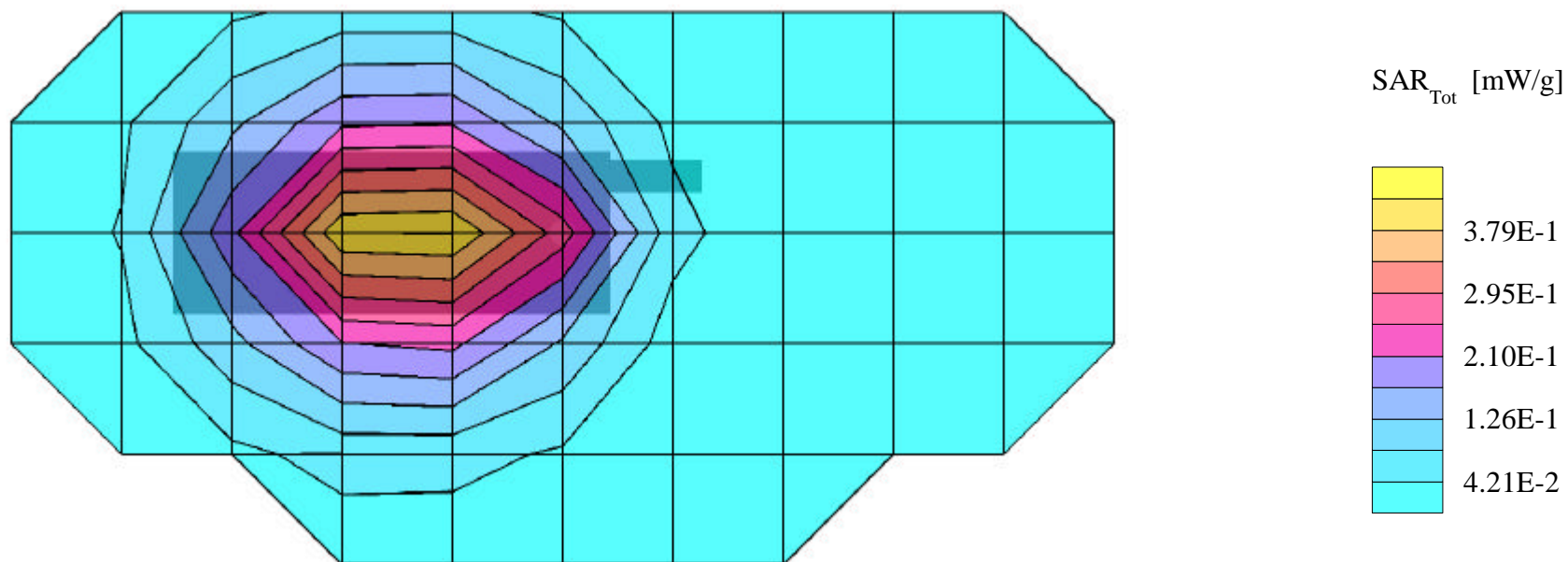
**SAR (1g): 0.426 mW/g, SAR (10g): 0.309 mW/g**

PANASONIC Tri-mode Model: EB-TX320

Cellular TDMA Mode, Ch.0383 [836.49MHz]

Conducted Power = 27.7dBm; Spacing = 2.0cm from flat phantom, w/beltclip

Test Date -- 05-08-2001



# PANASONIC FCC ID:NWJ10A007A -- Cellular TDMA Body SAR

Generic Twin Phantom; Flat Section; Probe: ET3DV6 - SN1560 -- Probe Cal Date 20/02/01

Med. Parameters 835 MHz Muscle:  $\sigma = 0.95$  mho/m  $\epsilon_r = 56.2$   $\rho = 1.00$  g/cm<sup>3</sup>; Antenna Position -- Out; Crest Factor 3.0

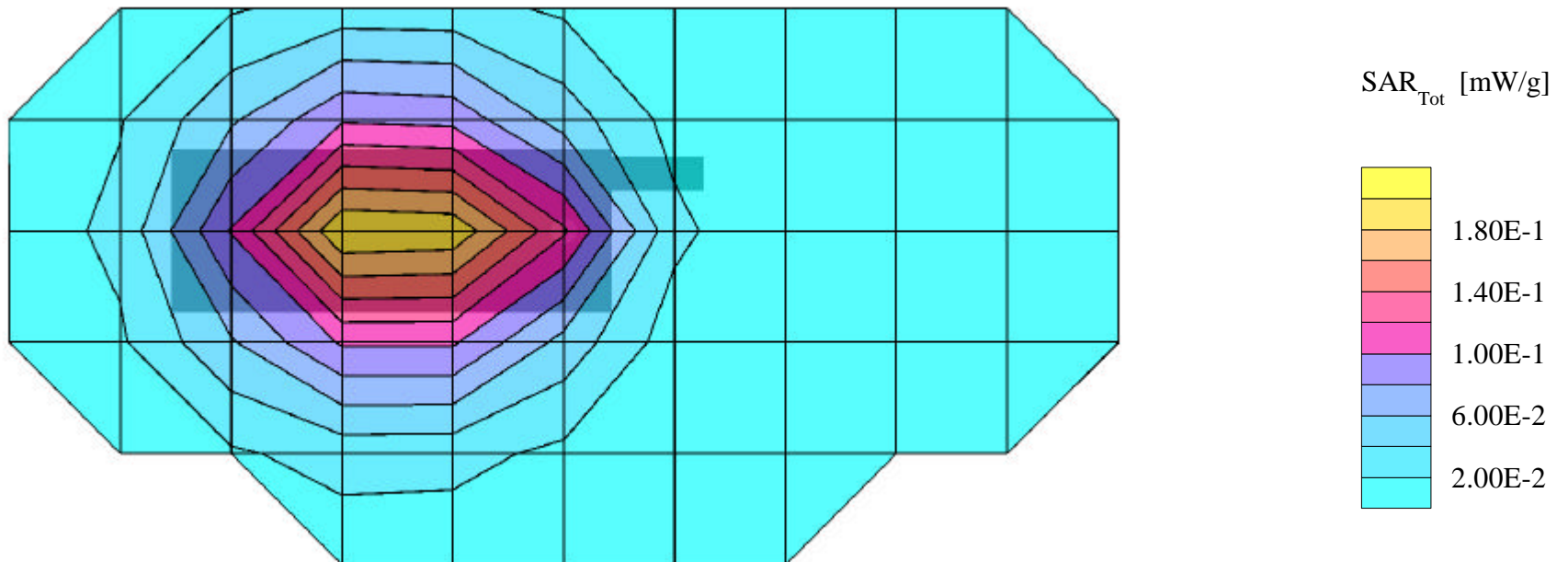
**SAR (1g): 0.203 mW/g, SAR (10g): 0.147 mW/g**

PANASONIC Tri-mode Model: EB-TX320

Cellular TDMA Mode, Ch.0799 [848.97MHz]

Conducted Power = 27.7dBm; Spacing = 2.0cm from flat phantom, w/beltclip

Test Date -- 05-08-2001





# PANASONIC FCC ID:NWJ10A007A -- Cellular TDMA Body SAR

Generic Twin Phantom; Flat Section; Probe: ET3DV6 - SN1560 -- Probe Cal Date 20/02/01

Med. Parameters 1900 MHz Muscle:  $\sigma = 1.85$  mho/m  $\epsilon_r = 54.2$   $\rho = 1.00$  g/cm<sup>3</sup>; Antenna Position -- Out; Crest Factor 3.0

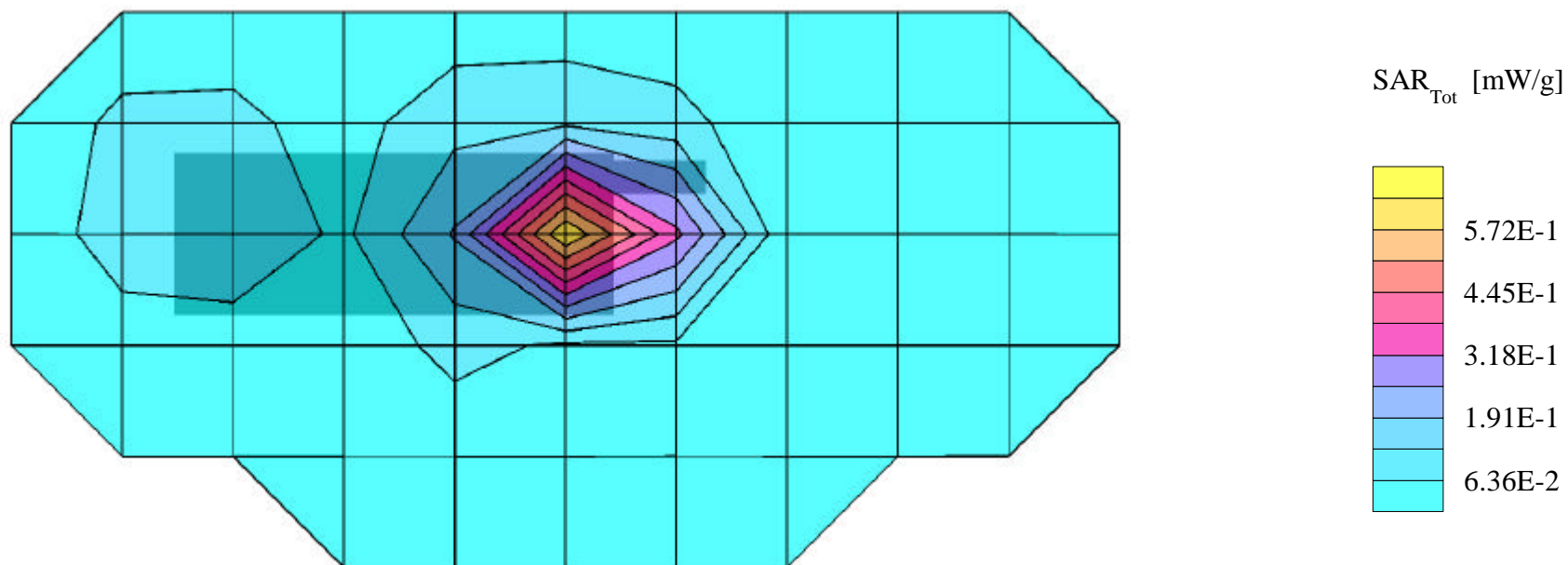
**SAR (1g): 0.835 mW/g, SAR (10g): 0.428 mW/g**

PANASONIC Tri-mode Model: EB-TX320

PCS TDMA Mode, Ch.0002 [1851MHz]

Conducted Power = 26.6dBm; Spacing = 2.0cm from flat phantom, w/beltclip

Test Date -- 05-09-2001



# PANASONIC FCC ID:NWJ10A007A -- Cellular TDMA Body SAR

Generic Twin Phantom; Flat Section; Probe: ET3DV6 - SN1560 -- Probe Cal Date 20/02/01

Med. Parameters 1900 MHz Muscle:  $\sigma = 1.85$  mho/m  $\epsilon_r = 54.2$   $\rho = 1.00$  g/cm<sup>3</sup>; Antenna Position -- Out; Crest Factor 3.0

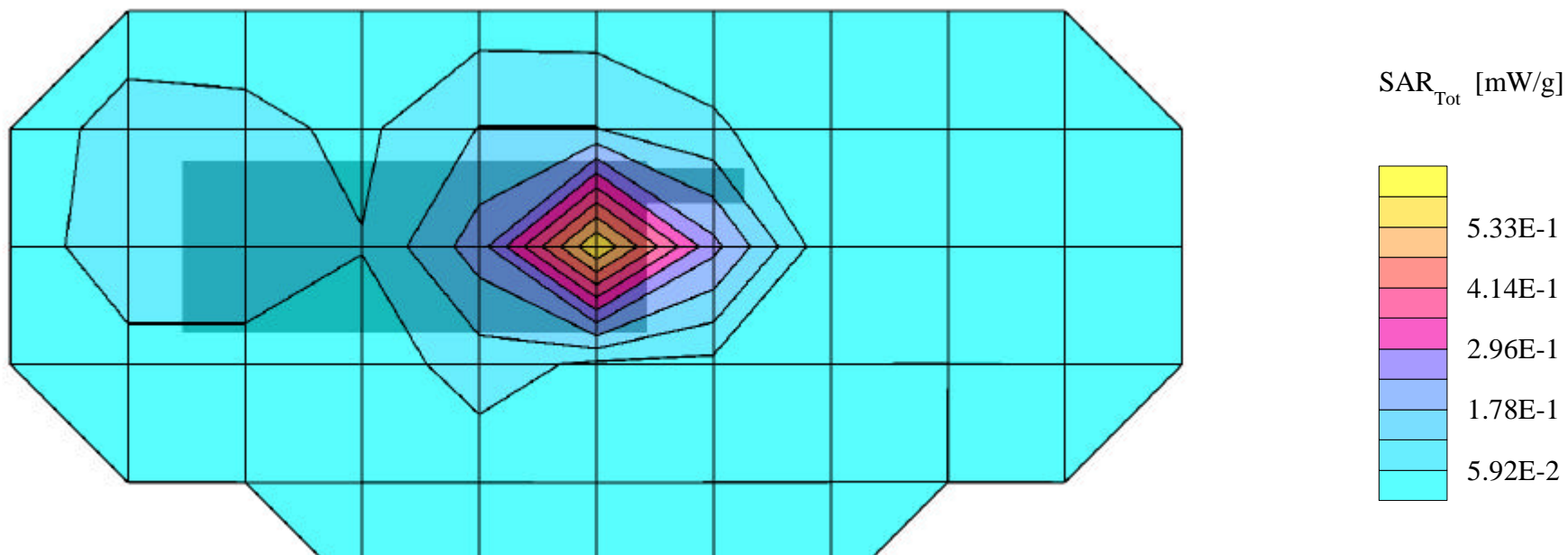
**SAR (1g): 0.722 mW/g, SAR (10g): 0.355 mW/g**

PANASONIC Tri-mode Model: EB-TX320

PCS TDMA Mode, Ch.1000 [1880MHz]

Conducted Power = 26.6dBm; Spacing = 2.0cm from flat phantom, w/beltclip

Test Date -- 05-09-2001





# PANASONIC FCC ID:NWJ10A007A -- Cellular TDMA Body SAR

Generic Twin Phantom; Flat Section; Probe: ET3DV6 - SN1560 -- Probe Cal Date 20/02/01

Med. Parameters 1900 MHz Muscle:  $\sigma = 1.85$  mho/m  $\epsilon_r = 54.2$   $\rho = 1.00$  g/cm<sup>3</sup>; Antenna Position -- Out; Crest Factor 3.0

**SAR (1g): 0.636 mW/g, SAR (10g): 0.314 mW/g**

PANASONIC Tri-mode Model: EB-TX320

PCS TDMA Mode, Ch.1998 [1910MHz]

Conducted Power = 26.6dBm; Spacing = 2.0cm from flat phantom, w/beltclip

Test Date -- 05-09-2001

