

PANASONIC FCC ID: NWJ10A002A -- FM Body SAR

Generic Twin Phantom; Flat Section; Probe: ET3DV5 - SN1370 -- Probe Cal Date 02/00

Med. Parameters 835 MHz Muscle: $\sigma = 0.95$ mho/m $\epsilon_r = 56.2$ $\rho = 1.00$ g/cm³; Antenna Position -- Out; Crest Factor 1.0

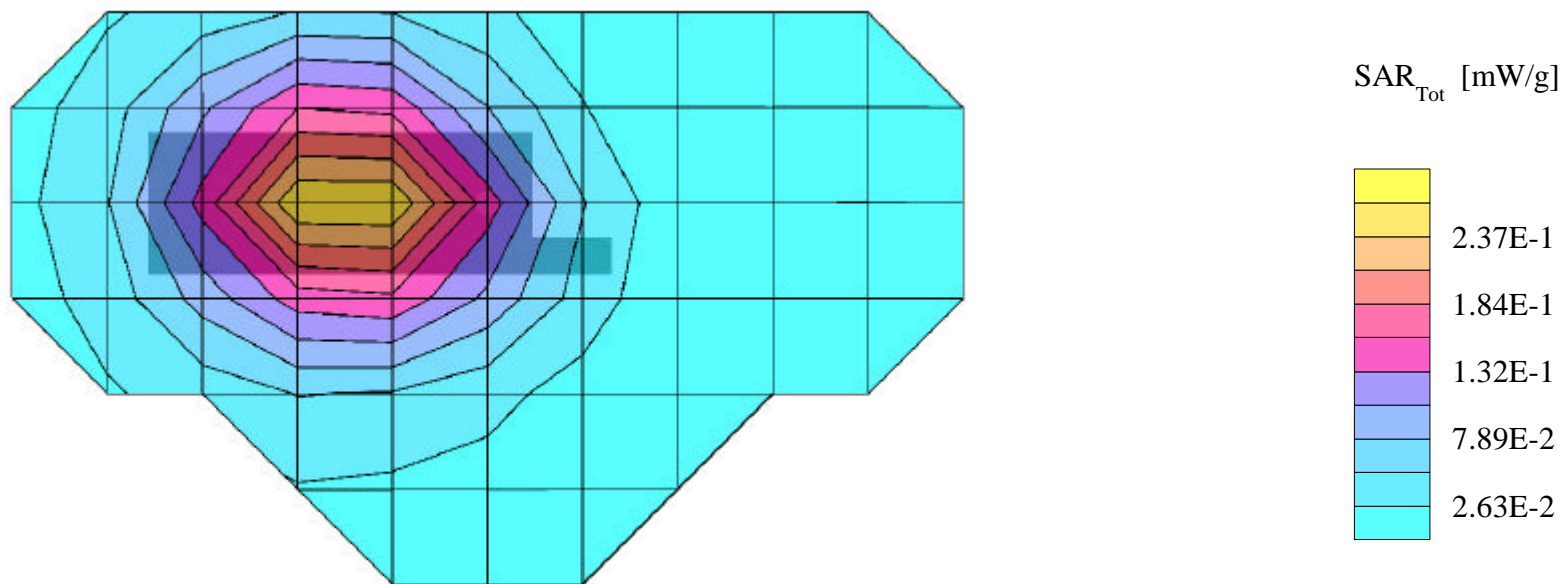
SAR (1g): 0.291 mW/g, SAR (10g): 0.212 mW/g

Panasonic Tri-mode Model: EBTX-220

FM Mode, Ch.0991 [824.04MHz]; Spacing = 2.5cm from flat phantom to phone, w/Holster

Conducted Power = 23.6dBm [Level: PL2]; S/N: P8.2-4, standard battery

Test Date - 10/26/2000



PANASONIC FCC ID: NWJ10A002A -- FM Body SAR

Generic Twin Phantom; Flat Section; Probe: ET3DV5 - SN1370 -- Probe Cal Date 02/00

Med. Parameters 835 MHz Muscle: $\sigma = 0.95$ mho/m $\epsilon_r = 56.2$ $\rho = 1.00$ g/cm³; Antenna Position -- Out; Crest Factor 1.0

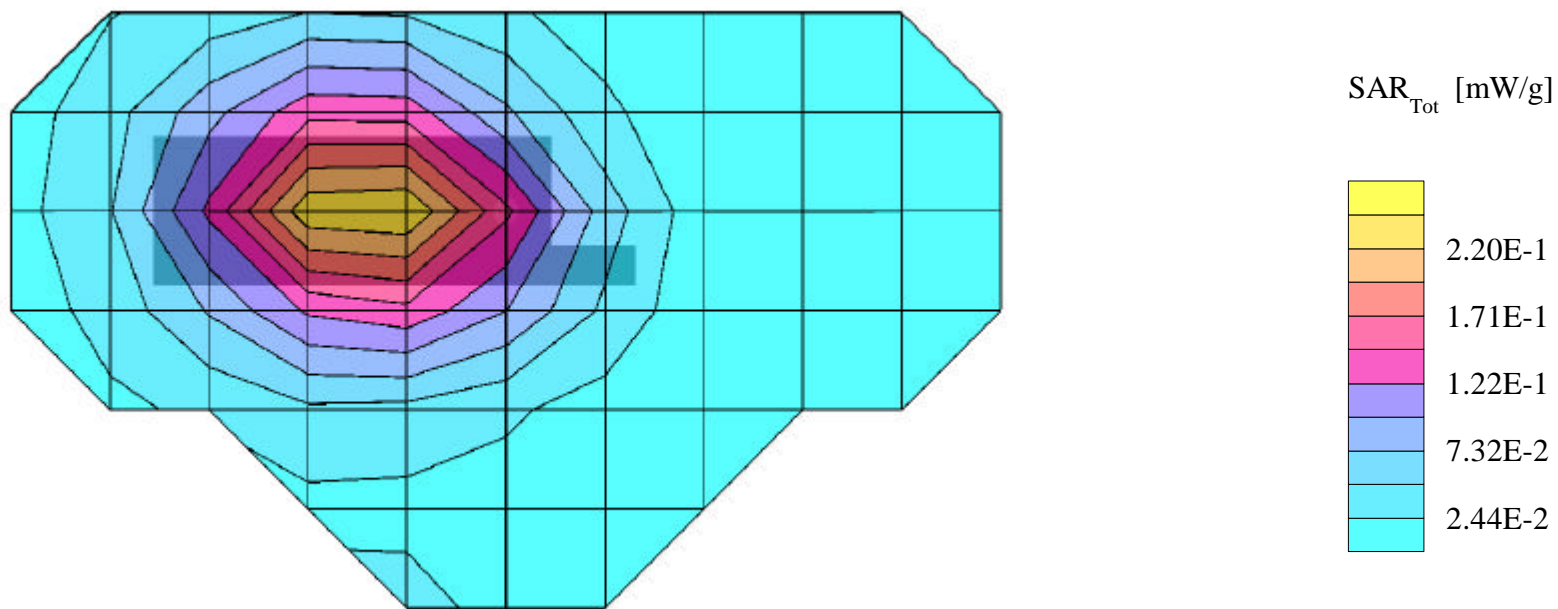
SAR (1g): 0.258 mW/g, SAR (10g): 0.189 mW/g

Panasonic Tri-mode Model: EBTX-220

FM Mode, Ch.0383 [836.49MHz]; Spacing = 2.5cm from flat phantom to phone, w/Holster

Conducted Power = 23.6dBm [Level: PL2]; S/N: P8.2-4, standard battery

Test Date - 10/26/2000



PANASONIC FCC ID:NWJ10A002A -- FM Body SAR

Generic Twin Phantom; Flat Section; Probe: ET3DV5 - SN1370 -- Probe Cal Date 02/00

Med. Parameters 835 MHz Muscle: $\sigma = 0.95$ mho/m $\epsilon_r = 56.2$ $\rho = 1.00$ g/cm³; Antenna Position -- Out; Crest Factor 1.0

SAR (1g): 0.210 mW/g, SAR (10g): 0.152 mW/g

Panasonic Tri-mode Model:EBTX-220

FM Mode, Ch.0799 [848.97MHz]; Spacing = 2.5cm from flat phantom to phone, w/Holster

Conducted Power = 23.6dBm [Level: PL2]; S/N: P8.2-4, standard battery

Test Date - 10/26/2000

