

PANASONIC FCC ID: NWJ10A002A -- FM Head SAR

Generic Twin Phantom; Right Hand Section; Probe: ET3DV5 - SN1370 -- Probe Cal Date 02/00

Med. Parameters 835 MHz Brain: $\sigma = 0.86$ mho/m $\epsilon_r = 42.5$ $\rho = 1.00$ g/cm³; Antenna Position -- Out; Crest Factor 1.0

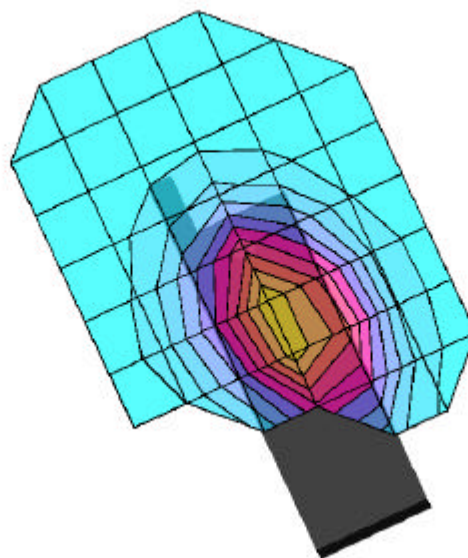
SAR (1g): 1.33 mW/g, SAR (10g): 0.903 mW/g

Panasonic Tri-mode Model: EBTX-210

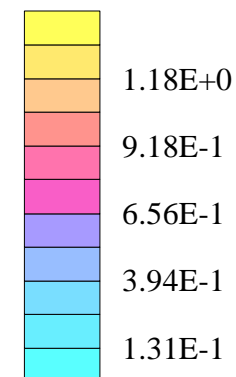
FM Mode, Ch.0991 [824.04MHz]

Conducted Power = 23.6dBm [Level: PL2]; S/N: P8.2-1, standard battery

Test Date - 10/25/2000



SAR_{Tot} [mW/g]



PANASONIC FCC ID:NWJ10A002A -- FM Head SAR

Generic Twin Phantom; Right Hand Section; Probe: ET3DV5 - SN1370 -- Probe Cal Date 02/00

Med. Parameters 835 MHz Brain: $\sigma = 0.86$ mho/m $\epsilon_r = 42.5$ $\rho = 1.00$ g/cm³; Antenna Position -- Out; Crest Factor 1.0

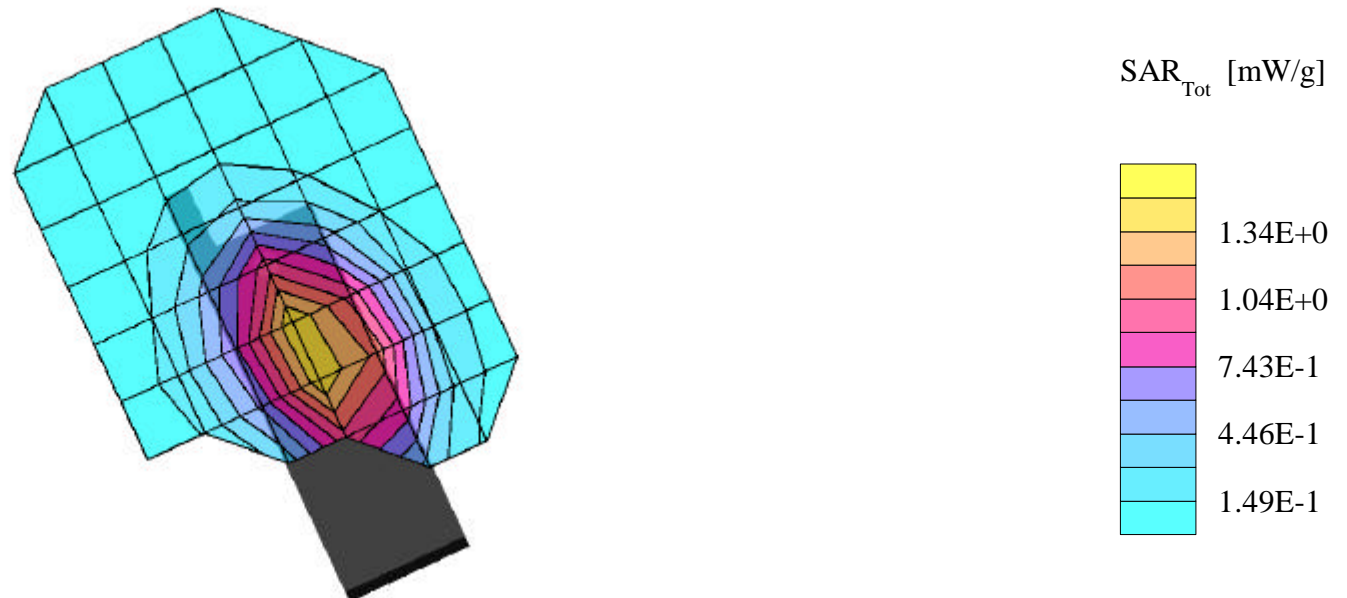
SAR (1g): 1.49 mW/g, SAR (10g): 1.02 mW/g

Panasonic Tri-mode Model:EBTX-210

FM Mode, Ch.0383 [836.49MHz]

Conducted Power = 23.6dBm [Level: PL2]; S/N: P8.2-1, standard battery

Test Date - 10/25/2000



PANASONIC FCC ID:NWJ10A002A -- FM Head SAR

Generic Twin Phantom; Right Hand Section; Probe: ET3DV5 - SN1370 -- Probe Cal Date 02/00

Med. Parameters 835 MHz Brain: $\sigma = 0.86$ mho/m $\epsilon_r = 42.5$ $\rho = 1.00$ g/cm³; Antenna Position -- Out; Crest Factor 1.0

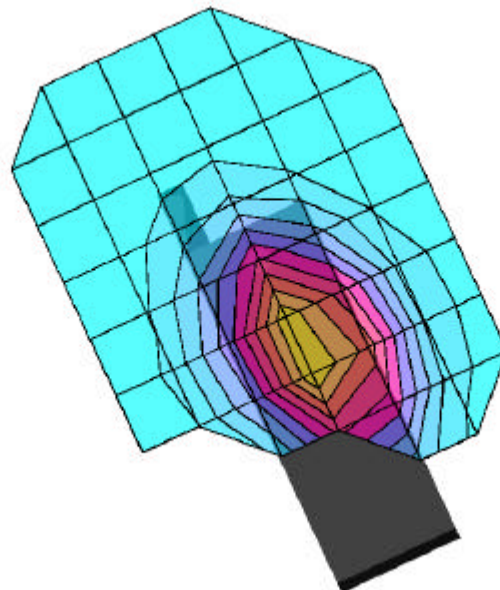
SAR (1g): 1.30 mW/g, SAR (10g): 0.885 mW/g

Panasonic Tri-mode Model:EBTX-210

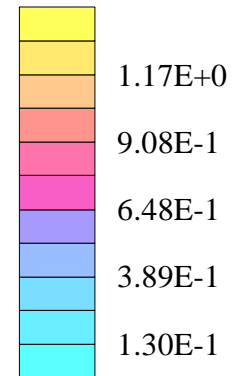
FM Mode, Ch.0799 [848.97MHz]

Conducted Power = 23.6dBm [Level: PL2]; S/N: P8.2-1, standard battery

Test Date - 10/25/2000



SAR_{Tot} [mW/g]



PANASONIC FCC ID:NWJ10A002A -- FM Head SAR

Generic Twin Phantom; Right Hand Section; Probe: ET3DV5 - SN1370 -- Probe Cal Date 02/00

Med. Parameters 835 MHz Brain: $\sigma = 0.86$ mho/m $\epsilon_r = 42.5$ $\rho = 1.00$ g/cm³; Antenna Position -- Out; Crest Factor 1.0

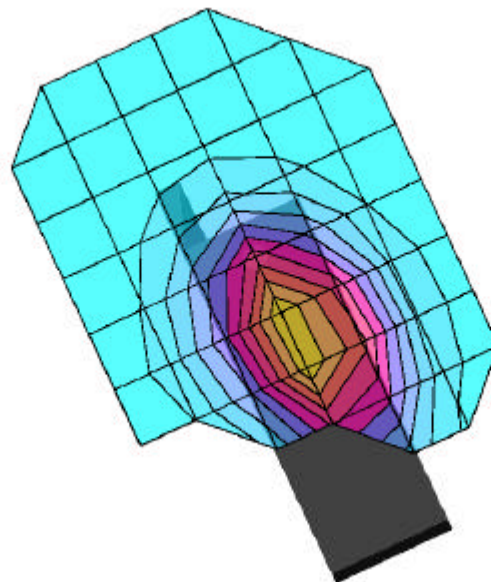
SAR (1g): 1.32 mW/g, SAR (10g): 0.898 mW/g

Panasonic Tri-mode Model:EBTX-210

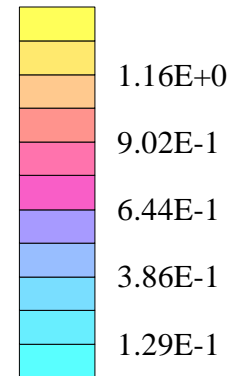
FM Mode, Ch.0991 [824.04MHz]

Conducted Power = 23.6dBm [Level: PL2]; S/N: P8.2-1, extended battery

Test Date - 10/25/2000



SAR_{Tot} [mW/g]



PANASONIC FCC ID:NWJ10A002A -- FM Head SAR

Generic Twin Phantom; Right Hand Section; Probe: ET3DV5 - SN1370 -- Probe Cal Date 02/00

Med. Parameters 835 MHz Brain: $\sigma = 0.86$ mho/m $\epsilon_r = 42.5$ $\rho = 1.00$ g/cm³; Antenna Position -- Out; Crest Factor 1.0

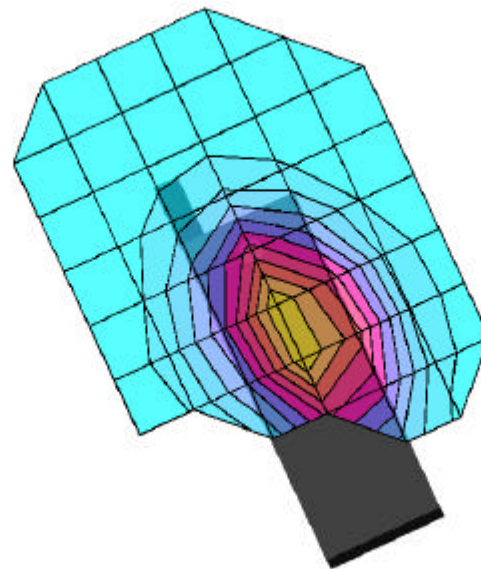
SAR (1g): 1.49 mW/g, SAR (10g): 1.01 mW/g

Panasonic Tri-mode Model:EBTX-210

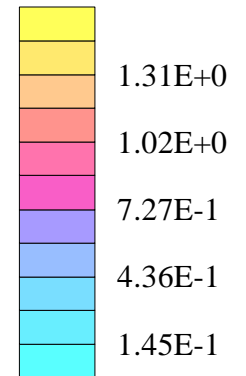
FM Mode, Ch.0383 [836.49MHz]

Conducted Power = 23.6dBm [Level: PL2]; S/N: P8.2-1, extended battery

Test Date - 10/25/2000



SAR_{Tot} [mW/g]



PANASONIC FCC ID: NWJ10A002A -- FM Head SAR

Generic Twin Phantom; Right Hand Section; Probe: ET3DV5 - SN1370 -- Probe Cal Date 02/00

Med. Parameters 835 MHz Brain: $\sigma = 0.86$ mho/m $\epsilon_r = 42.5$ $\rho = 1.00$ g/cm³; Antenna Position -- Out; Crest Factor 1.0

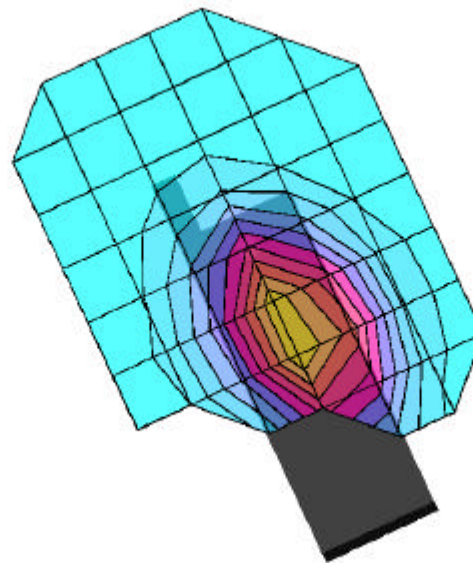
SAR (1g): 1.26 mW/g, SAR (10g): 0.858 mW/g

Panasonic Tri-mode Model: EBTX-210

FM Mode, Ch.0799 [848.97MHz]

Conducted Power = 23.6dBm [Level: PL2]; S/N: P8.2-1, extended battery

Test Date - 10/25/2000



SAR_{Tot} [mW/g]

