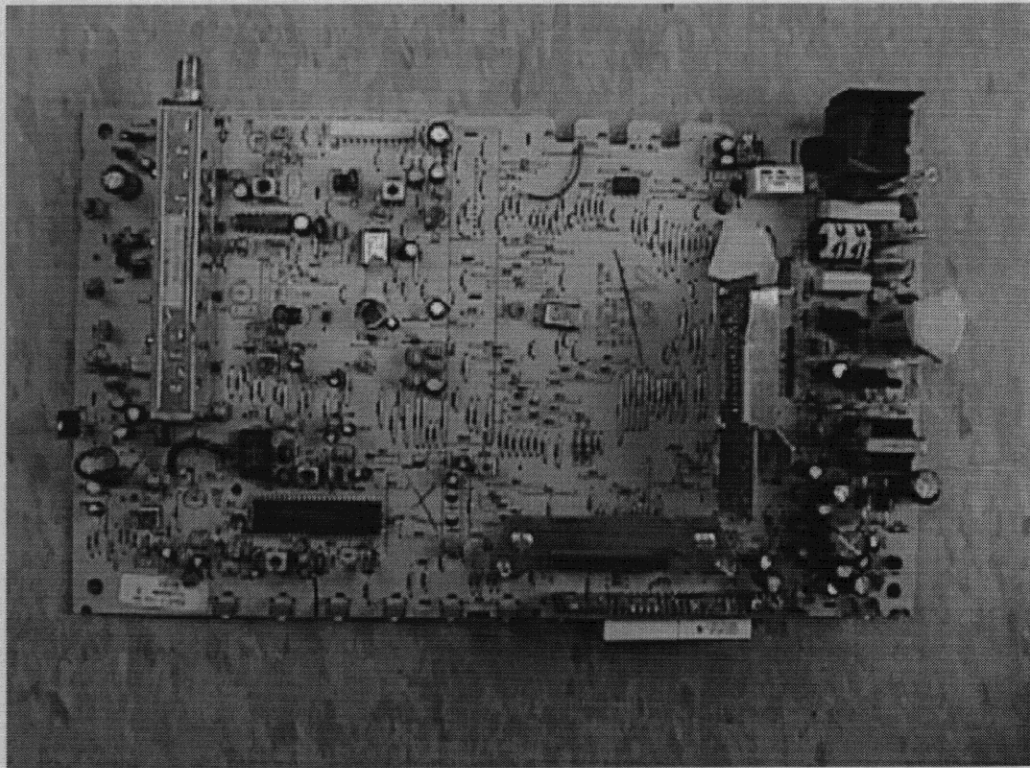


FCC ID NO NVV2200I-01

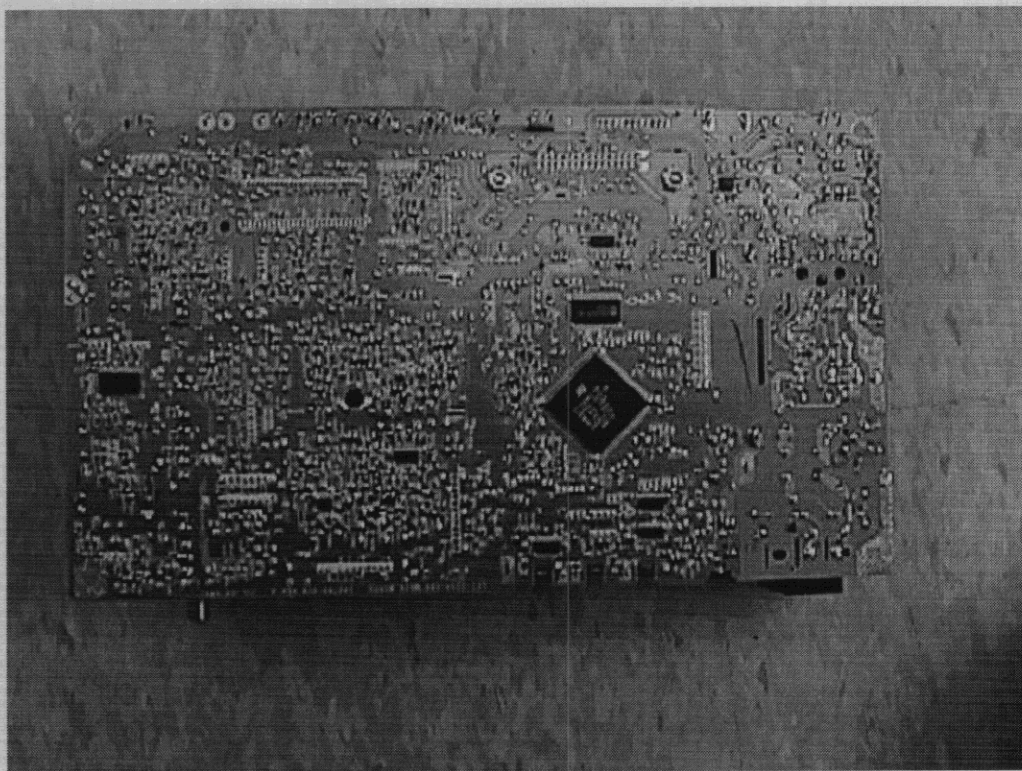
WordGate Model CFT2200I

Internal view Showing  
Location of SM2200

TOP VIEW OF MAIN PCB WITH SHIELD REMOVED

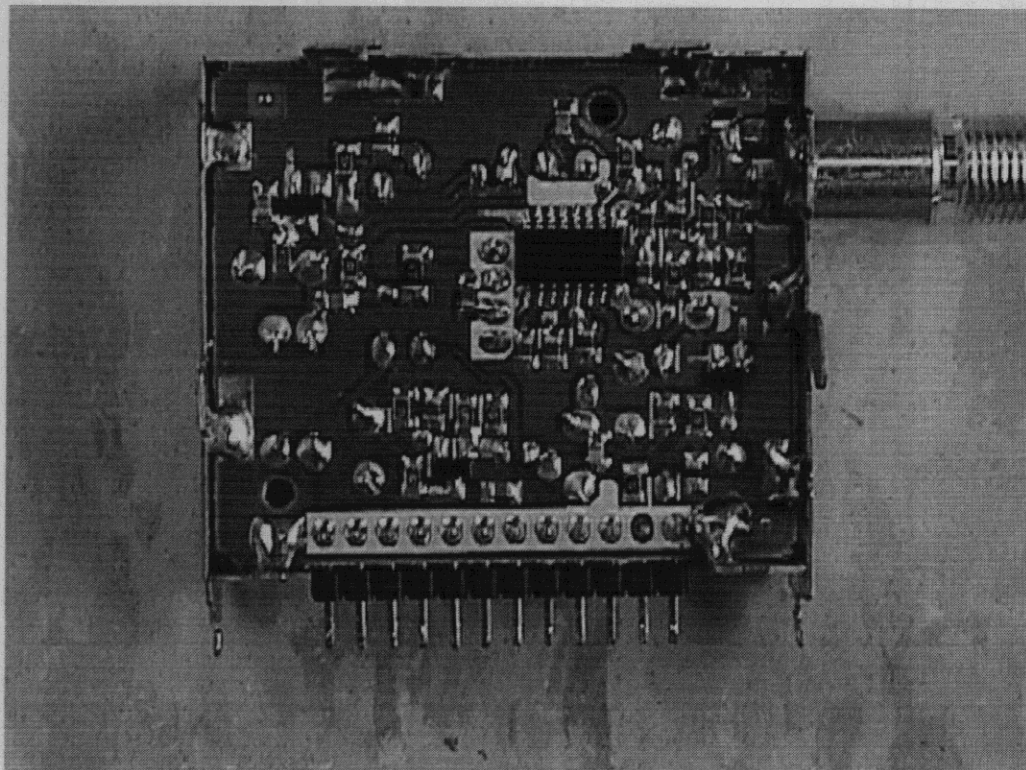


VIEW OF BOTTOM OF MAIN PCB WITH SHIELDS REMOVED





VIEW OF CIRCUIT SIDE OF RF MODULATOR



If you need any additional information, I may be contacted at (215)323-2481.

Sincerely,  
General Instrument Corp.

Walter S. Kenworthy  
Compliance Engineer