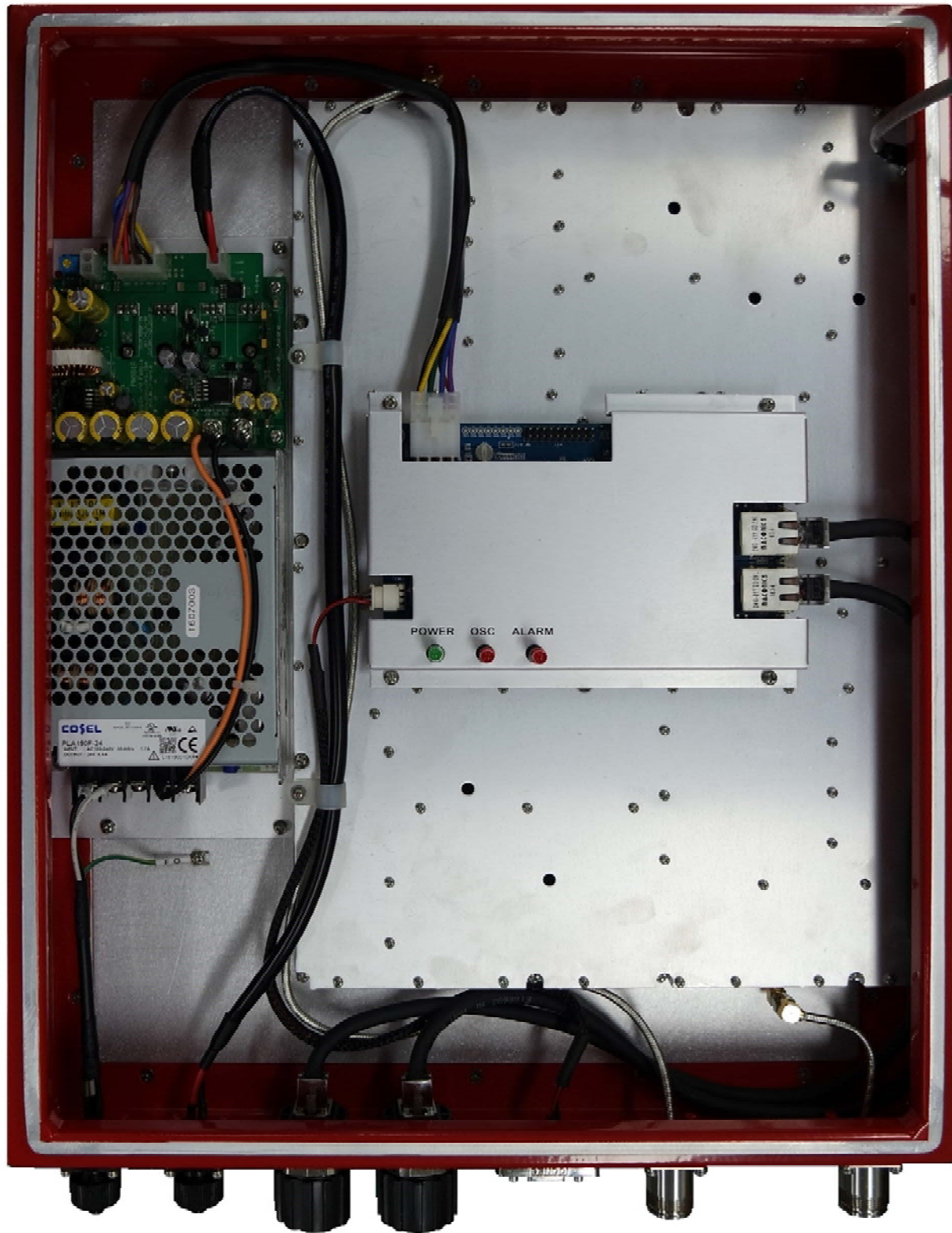
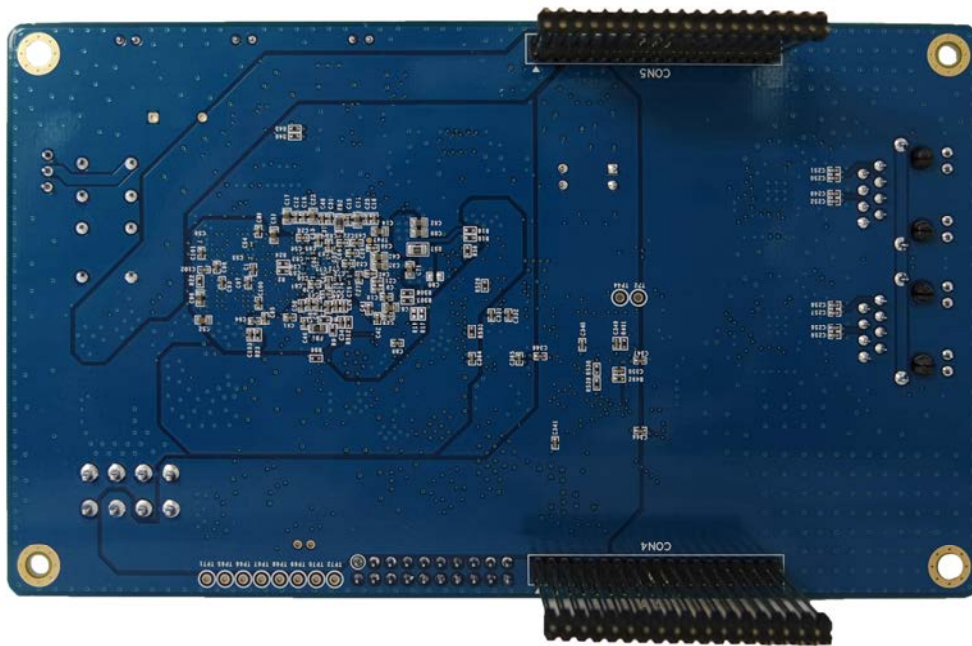
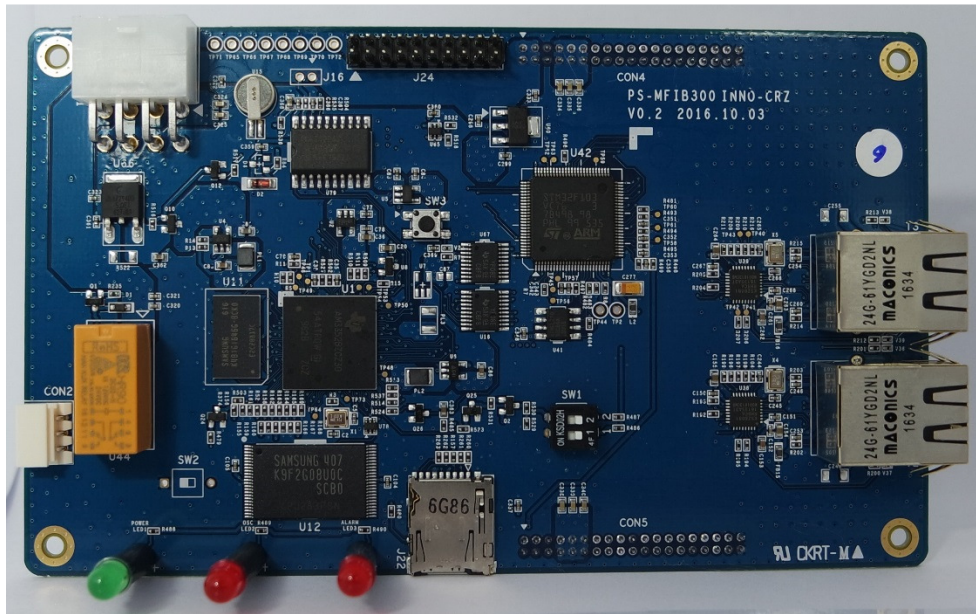


# INSIDE TOP ASSEMBLY

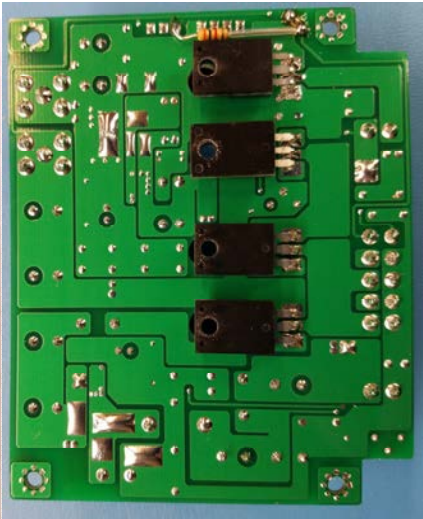
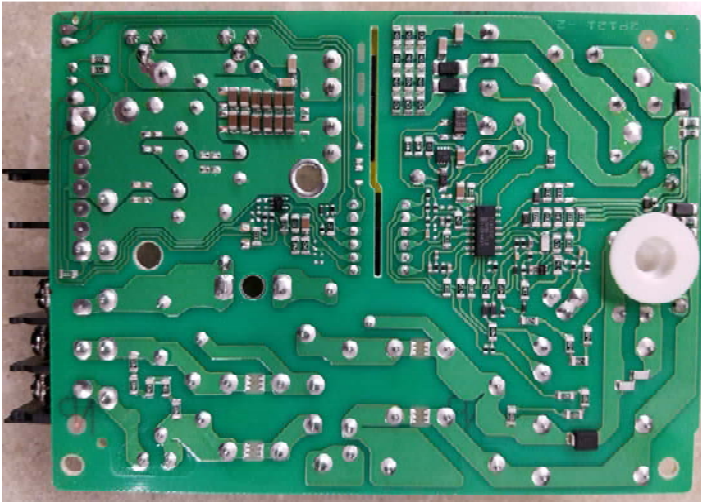
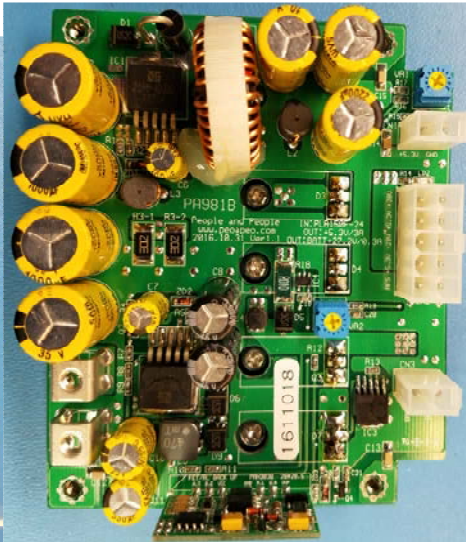
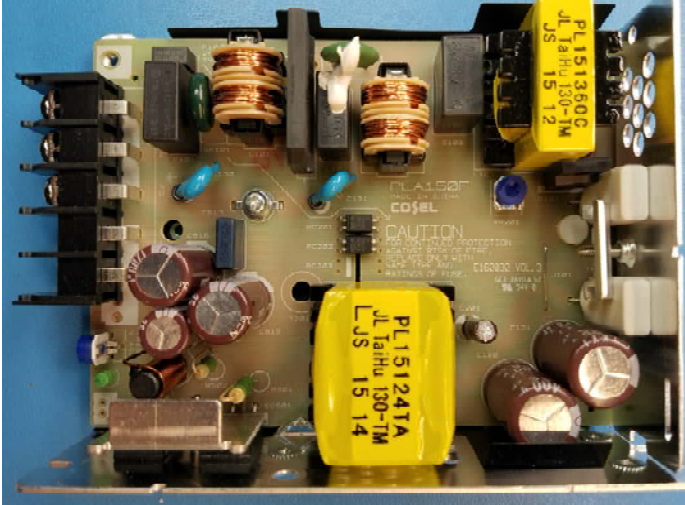


# CPU PCB TOP AND BOTTOM

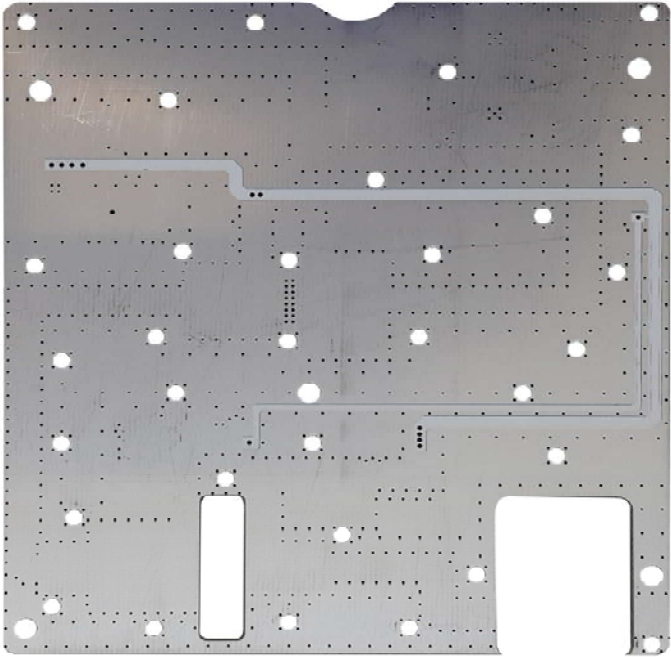
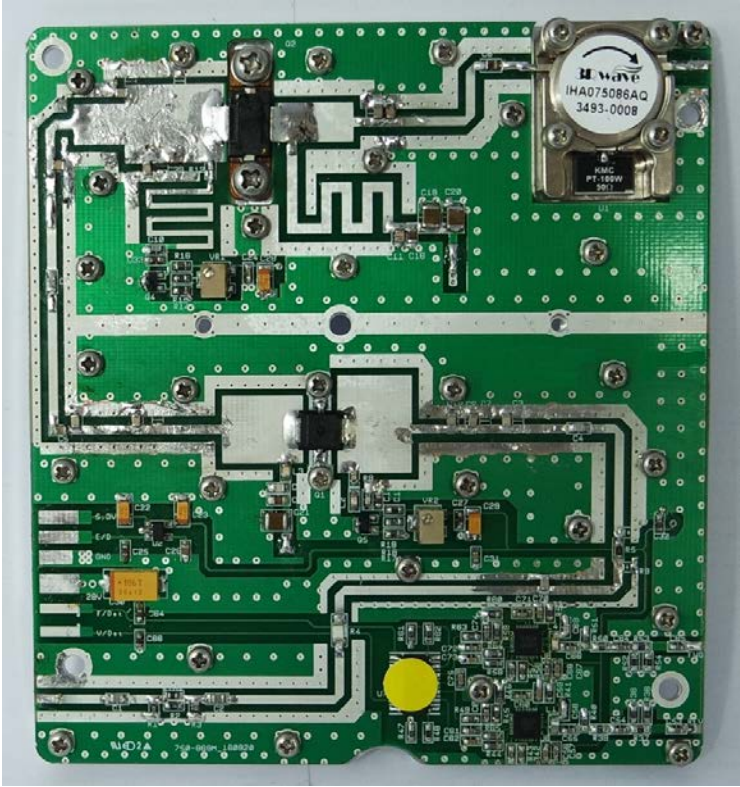




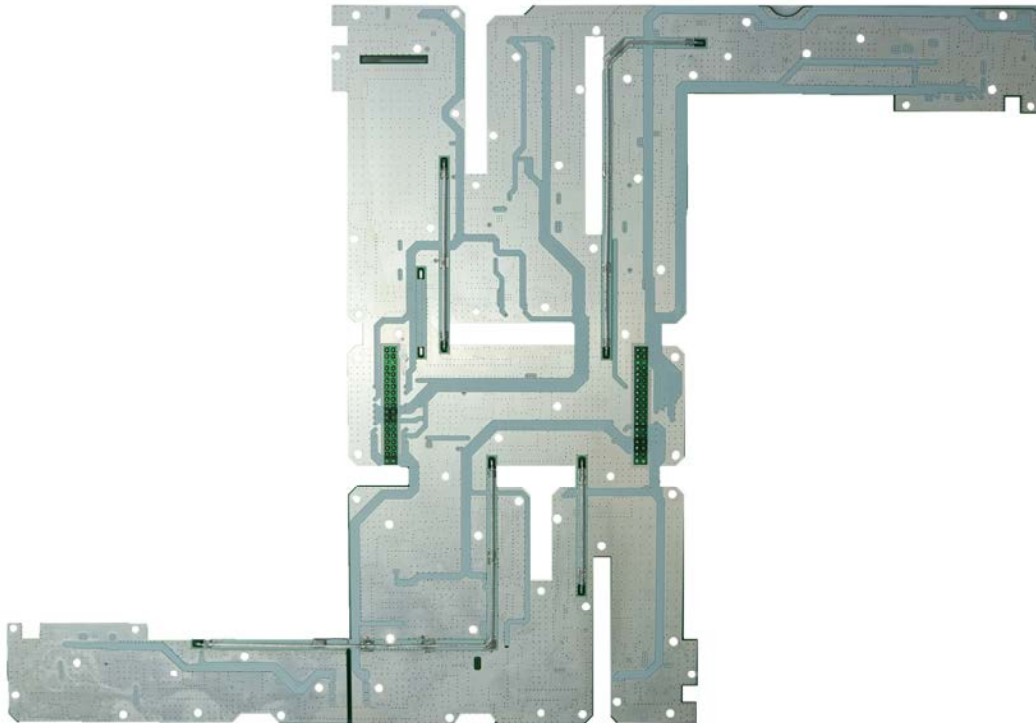
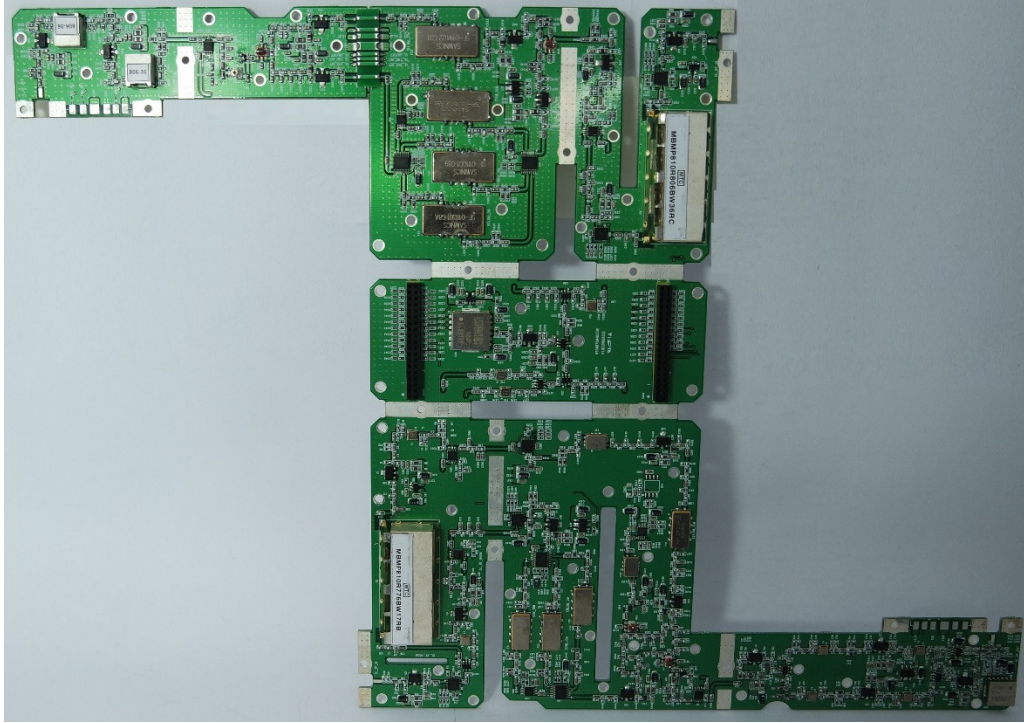
# POWER SUPPLY PCBs TOP AND BOTTOM



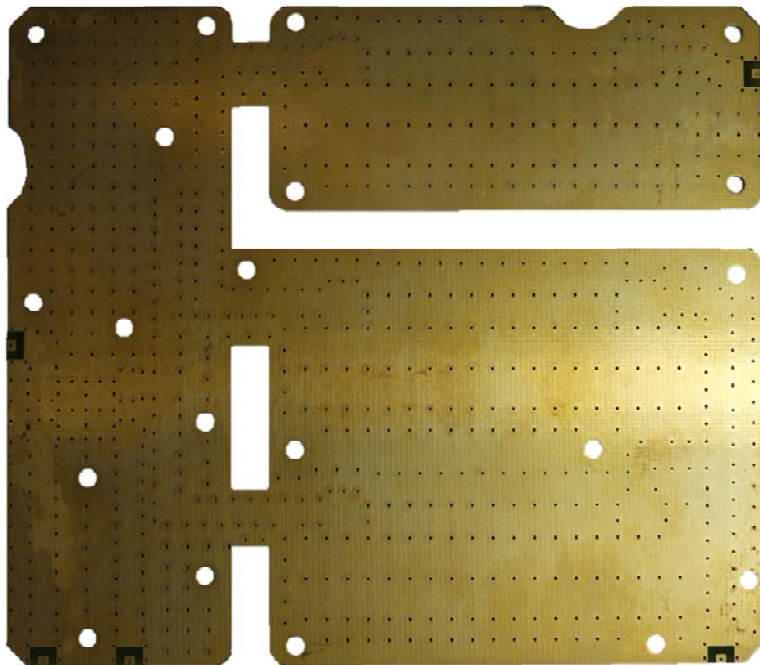
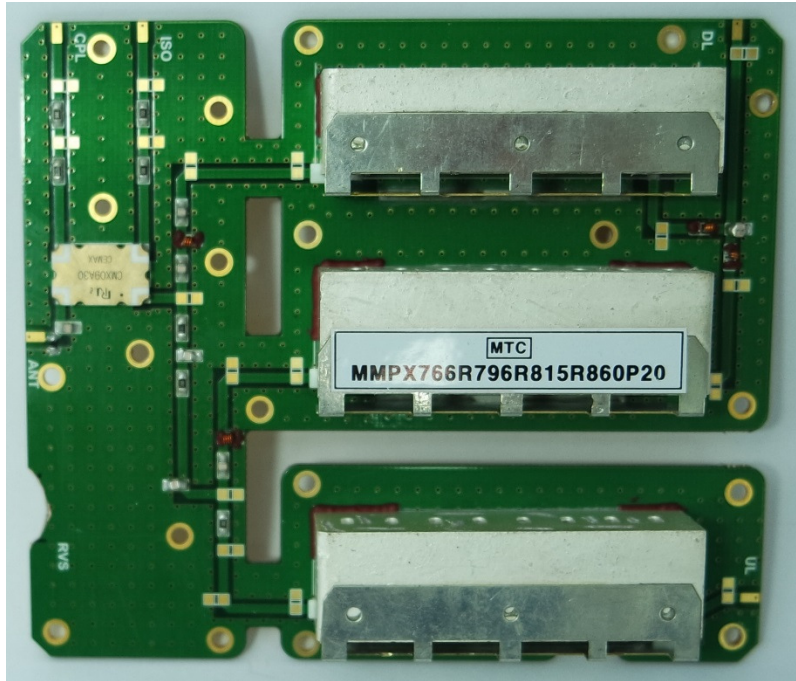
# HPA DL PCB TOP AND BOTTOM



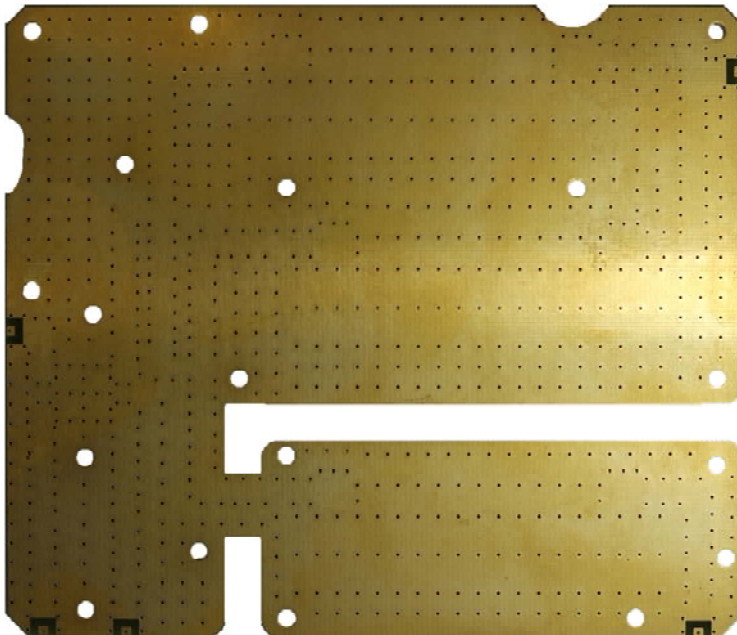
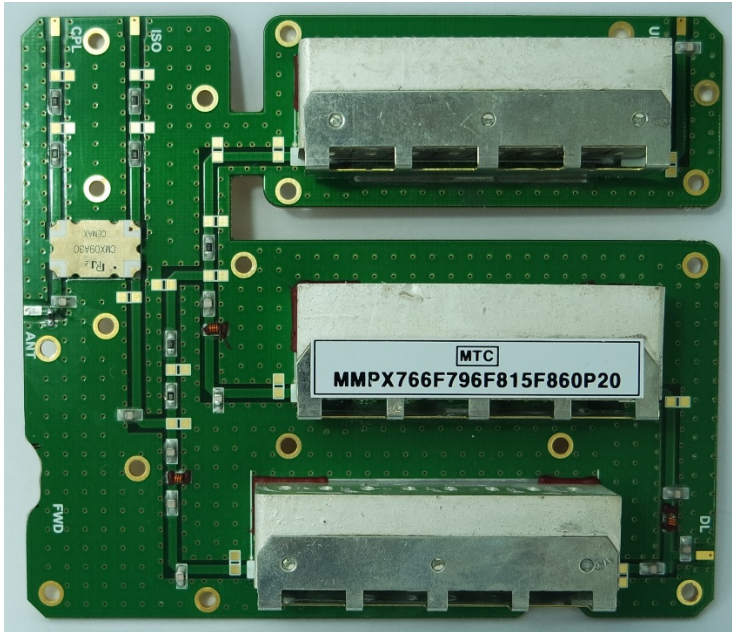
# RF PCB TOP AND BOTTOM



# DL MUX PCB TOP AND BOTTOM



# UL MUX PCB TOP AND BOTTOM





# UL HPA PCB TOP AND BOTTOM

