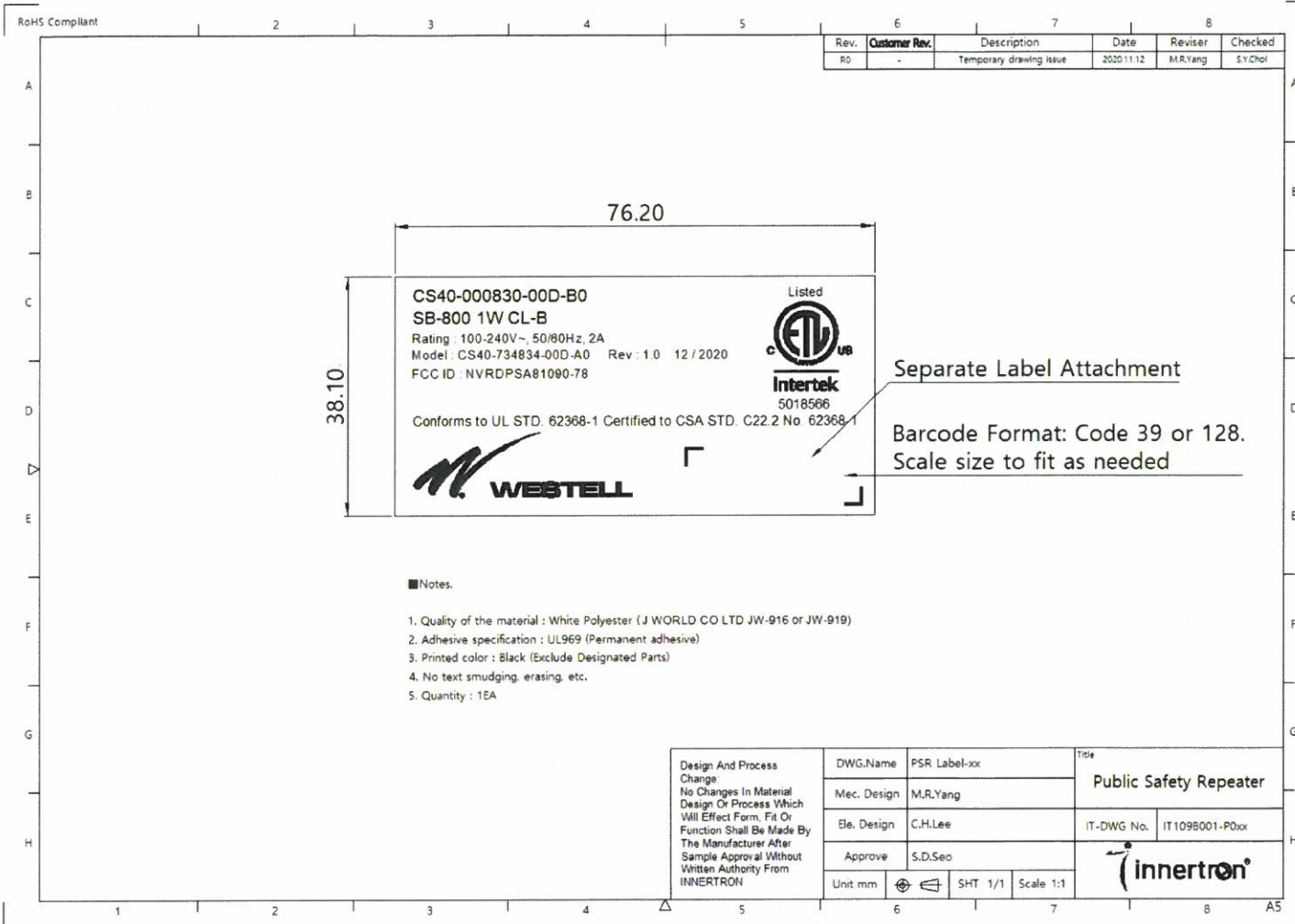




Labels:

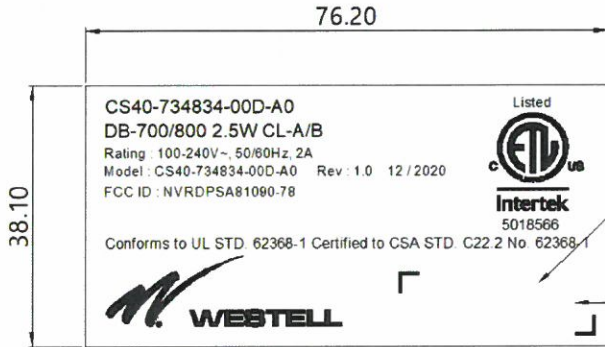


750 North Commons Drive
 Aurora, IL 60504 USA
 (630) 898-2500



RoHS Compliant

Rev.	Customer Rev.	Description	Date	Reviser	Checked
RD	-	Temporary drawing issue	2020.11.12	M.R.Yang	S.Y.Choi



■ Notes.

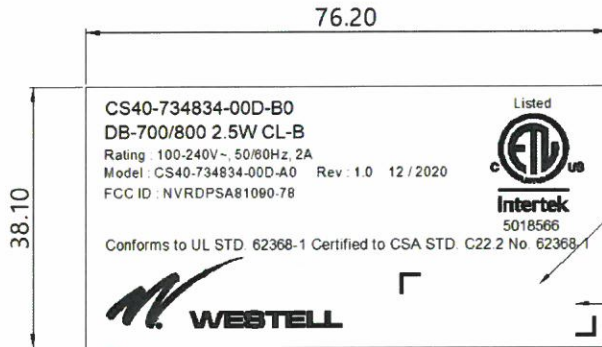
1. Quality of the material : White Polyester (J WORLD CO LTD JW-916 or JW-919)
2. Adhesive specification : UL969 (Permanent adhesive)
3. Printed color : Black (Exclude Designated Parts)
4. No text smudging, erasing, etc.
5. Quantity : 1EA

Design And Process Change: No Changes In Material Design Or Process Which Will Effect Form, Fit Or Function Shall Be Made By The Manufacturer After Sample Approval Without Written Authority From INNERTRON	DWG.Name	PSR Label-1	Title	
	Mec. Design	M.R.Yang	Public Safety Repeater	
	Ele. Design	C.H.Lee	IT-DWG No.	IT1098001-P001
	Approve	S.D.Seo		
	Unit mm	SHT 1/1 Scale 1:1		



RoHS Compliant

Rev.	Customer Rev.	Description	Date	Reviser	Checked
RD	-	Temporary drawing issue	2020.11.12	M.R.Yang	S.Y.Choi



Separate Label Attachment

Barcode Format: Code 39 or 128.
Scale size to fit as needed

Notes.

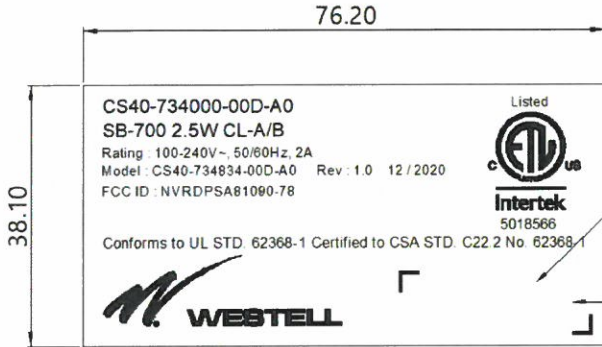
1. Quality of the material : White Polyester (J WORLD CO LTD JW-916 or JW-919)
2. Adhesive specification : UL969 (Permanent adhesive)
3. Printed color : Black (Exclude Designated Parts)
4. No text smudging, erasing, etc.
5. Quantity : 1EA

Design And Process Change: No Changes In Material Design Or Process Which Will Effect Form, Fit Or Function Shall Be Made By The Manufacturer After Sample Approval Without Written Authority From INNERTRON	DWG.Name	PSR Label-2	Title	
	Mec. Design	M.R.Yang	Public Safety Repeater	
	Ele. Design	C.H.Lee	IT-DWG No.	IT109B001-P002
	Approve	S.D.Seo		
	Unit mm	SHT 1/1 Scale 1:1		



RoHS Compliant

Rev.	Customer Rev.	Description	Date	Reviser	Checked
RO	-	Temporary drawing issue	2020.11.12	M.R.Yang	S.Y.Choi



Separate Label Attachment

Barcode Format: Code 39 or 128.
Scale size to fit as needed

Notes.

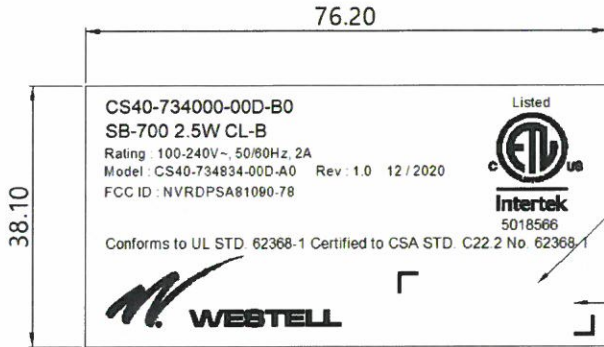
1. Quality of the material : White Polyester (J WORLD CO LTD JW-916 or JW-919)
2. Adhesive specification : UL969 (Permanent adhesive)
3. Printed color : Black (Exclude Designated Parts)
4. No text smudging, erasing, etc.
5. Quantity : 1EA

Design And Process Change No Changes In Material Design Or Process Which Will Effect Form, Fit Or Function Shall Be Made By The Manufacturer After Sample Approval Without Written Authority From INNERTRON	DWG.Name	PSR Label-3	Title	
	Mec. Design	M.R.Yang	Public Safety Repeater	
	Ele. Design	C.H.Lee	IT-DWG No.	IT1098001-P003
	Approve	S.D.Sec		
	Unit mm	SHT 1/1 Scale 1:1		



RoHS Compliant

Rev.	Customer Rev.	Description	Date	Reviser	Checked
R0	-	Temporary drawing issue	2020.11.12	M.R.Yang	SY.Choi



Separate Label Attachment

Barcode Format: Code 39 or 128.
Scale size to fit as needed

Notes.

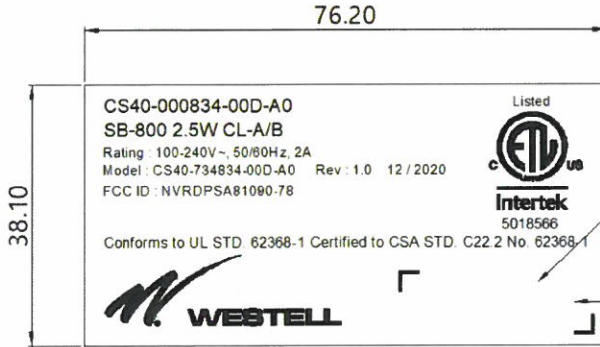
1. Quality of the material : White Polyester (J WORLD CO LTD JW-916 or JW-919)
2. Adhesive specification : UL969 (Permanent adhesive)
3. Printed color : Black (Exclude Designated Parts)
4. No text smudging, erasing, etc.
5. Quantity : 1EA

Design And Process Change No Changes In Material Design Or Process Which Will Effect Form, Fit Or Function Shall Be Made By The Manufacturer After Sample Approval Without Written Authority From INNERTRON	DWG.Name	PSR Label-4	Title	
	Mec. Design	M.R.Yang	Public Safety Repeater	
	Ele. Design	C.H.Lee	IT-DWG No.	IT1098001-P004
	Approve	S.D.Sec		
	Unit mm	SHT 1/1 Scale 1:1		



RoHS Compliant

Rev.	Customer Rev.	Description	Date	Reviser	Checked
R0	-	Temporary drawing issue	2020.11.12	M.R.Yang	S.Y.Choi



Notes.

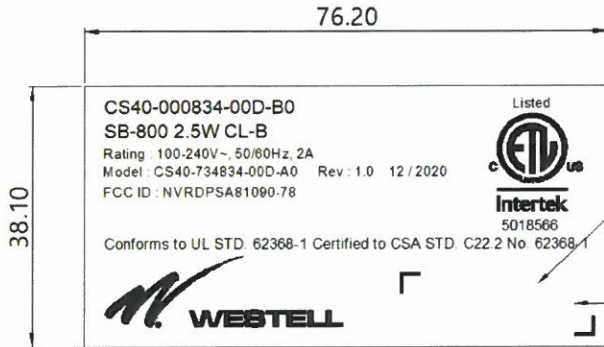
1. Quality of the material : White Polyester (J WORLD CO LTD JW-916 or JW-919)
2. Adhesive specification : UL969 (Permanent adhesive)
3. Printed color : Black (Exclude Designated Parts)
4. No text smudging, erasing, etc.
5. Quantity : 1EA

Design And Process Change No Changes In Material Design Or Process Which Will Effect Form, Fit Or Function Shall Be Made By The Manufacturer After Sample Approval Without Written Authority From INNERTRON	DWG.Name	PSR Label-5	Title	
	Mec. Design	M.R.Yang	Public Safety Repeater	
	Ele. Design	C.H.Lee	IT-DWG No.	IT109B001-P005
	Approve	S.D.Seo		
	Unit mm			



RoHS Compliant

Rev.	Customer Rev.	Description	Date	Reviser	Checked
RD	-	Temporary drawing issue	2020.11.12	M.R.Yang	S.Y.Choi



Separate Label Attachment

Barcode Format: Code 39 or 128.
Scale size to fit as needed

■ Notes.

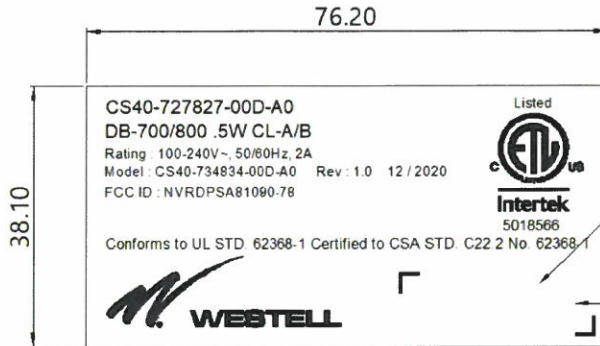
1. Quality of the material : White Polyester (J WORLD CO LTD JW-916 or JW-919)
2. Adhesive specification : UL969 (Permanent adhesive)
3. Printed color : Black (Exclude Designated Parts)
4. No text smudging, erasing, etc.
5. Quantity : 1EA

Design And Process Change No Changes In Material Design Or Process Which Will Effect Form, Fit Or Function Shall Be Made By The Manufacturer After Sample Approval Without Written Authority From INNERTRON	DWG.Name	PSR Label-6	Title	
	Mec. Design	M.R.Yang	Public Safety Repeater	
	Ele. Design	C.H.Lee	IT-DWG No.	IT1098001-P006
	Approve	S.D.Seo		
	Unit mm	SHT 1/1 Scale 1:1		



RoHS Compliant

Rev.	Customer Rev.	Description	Date	Reviser	Checked
R0	-	Temporary drawing issue	2020.11.12	M.R.Yang	S.Y.Choi



■ Notes.

1. Quality of the material : White Polyester (J WORLD CO LTD JW-916 or JW-919)
2. Adhesive specification : UL969 (Permanent adhesive)
3. Printed color : Black (Exclude Designated Parts)
4. No text smudging, erasing, etc.
5. Quantity : 1EA

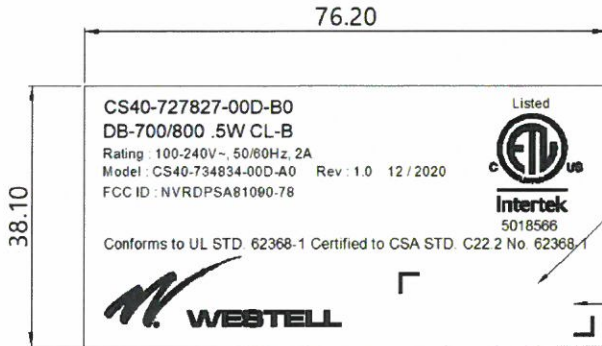
Design And Process Change No Changes In Material Design Or Process Which Will Effect Form, Fit Or Function Shall Be Made By The Manufacturer After Sample Approval Without Written Authority From INNERTRON	DWG.Name	PSR Label-7		Title	
	Mec. Design	M.R.Yang		Public Safety Repeater	
	Ele. Design	C.H.Lee		IT-DWG No.	IT1098001-P007
	Approve	S.D.Seo			
	Unit mm		SHT 1/1		

750 North Commons Drive
 Aurora, IL 60504 USA
 (630) 898-2500



RoHS Compliant

Rev.	Customer Rev.	Description	Date	Reviser	Checked
R0	-	Temporary drawing issue	2020/11/12	M.R.Yang	S.Y.Choi



Separate Label Attachment

Barcode Format: Code 39 or 128.
Scale size to fit as needed

■ Notes.

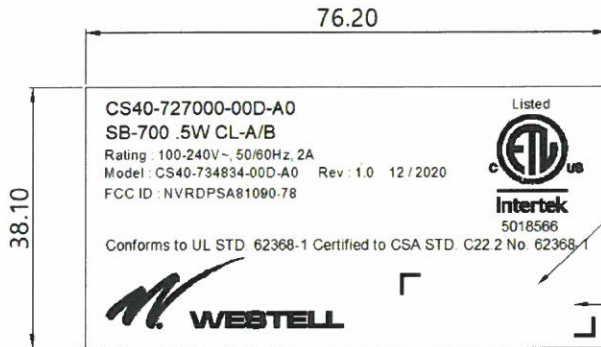
1. Quality of the material : White Polyester (J WORLD CO LTD JW-916 or JW-919)
2. Adhesive specification : UL969 (Permanent adhesive)
3. Printed color : Black (Exclude Designated Parts)
4. No text smudging, erasing, etc.
5. Quantity : 1EA

Design And Process Change: No Changes In Material Design Or Process Which Will Effect Form, Fit Or Function Shall Be Made By The Manufacturer After Sample Approval Without Written Authority From INNERTRON	DWG.Name	PSR Label-B		Title	
	Mec. Design	M.R.Yang		Public Safety Repeater	
	Ele. Design	C.H.Lee		IT-DWG No.	IT1098001-P008
	Approve	S.D.Sec			
	Unit mm		SHT 1/1		



RoHS Compliant

Rev.	Customer Rev.	Description	Date	Reviser	Checked
R0	-	Temporary drawing issue	2020.11.12	M.R.Yang	S.Y.Choi



■ Notes.

1. Quality of the material : White Polyester (J WORLD CO LTD JW-916 or JW-919)
2. Adhesive specification : UL969 (Permanent adhesive)
3. Printed color : Black (Exclude Designated Parts)
4. No text smudging, erasing, etc.
5. Quantity : 1EA

Design And Process Change No Changes In Material Design Or Process Which Will Effect Form, Fit Or Function Shall Be Made By The Manufacturer After Sample Approval Without Written Authority From INNERTRON	DWG.Name	PSR Label-9	Title	
	Mec. Design	M.R.Yang	Public Safety Repeater	
	Ele. Design	C.H.Lee	IT-DWG No.	IT1098001-P009
	Approve	S.D.Sec		
	Unit mm	SHT 1/1 Scale 1:1		



RoHS Compliant

Rev.	Customer Rev.	Description	Date	Reviser	Checked
R0	-	Temporary drawing issue	2020.11.12	M.R.Yang	S.Y.Choi



Notes.

1. Quality of the material : White Polyester (J WORLD CO.LTD JW-916 or JW-919)
2. Adhesive specification : UL969 (Permanent adhesive)
3. Printed color : Black (Exclude Designated Parts)
4. No text smudging, erasing, etc.
5. Quantity : 1EA

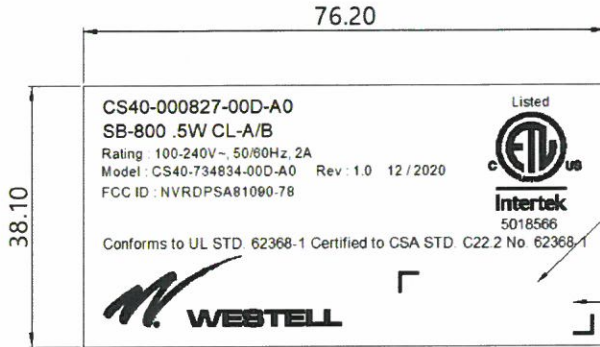
Design And Process Change No Changes In Material Design Or Process Which Will Effect Form, Fit Or Function Shall Be Made By The Manufacturer After Sample Approval Without Written Authority From INNERTRON	DWG.Name	PSR Label-10	Title	
	Mec. Design	M.R.Yang	Public Safety Repeater	
	Ele. Design	C.H.Lee	IT-DWG No.	IT1098001-P010
	Approve	S.D.Seo		
	Unit mm	SHT 1/1 Scale 1:1		

750 North Commons Drive
 Aurora, IL 60504 USA
 (630) 898-2500



RoHS Compliant

Rev.	Customer Rev.	Description	Date	Reviser	Checked
R0	-	Temporary drawing issue	2020.11.12	M.R.Yang	S.Y.Choi



Separate Label Attachment

Barcode Format: Code 39 or 128.
Scale size to fit as needed

Notes.

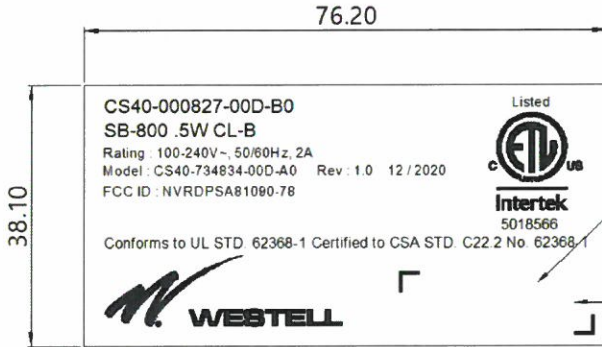
1. Quality of the material : White Polyester (J WORLD CO LTD JW-916 or JW-919)
2. Adhesive specification : UL969 (Permanent adhesive)
3. Printed color : Black (Exclude Designated Parts)
4. No text smudging, erasing, etc.
5. Quantity : 1EA

Design And Process Change No Changes In Material Design Or Process Which Will Effect Form, Fit Or Function Shall Be Made By The Manufacturer After Sample Approval Without Written Authority From INNERTRON	DWG.Name	PSR Label-11	Title	
	Mec. Design	M.R.Yang	Public Safety Repeater	
	Ele. Design	C.H.Lee	IT-DWG No.	IT1098001-P011
	Approve	S.D.Seo		
	Unit mm			



RoHS Compliant

Rev.	Customer Rev.	Description	Date	Reviser	Checked
RO	-	Temporary drawing issue	2020.11.12	M.R.Yang	S.Y.Choi



Separate Label Attachment

Barcode Format: Code 39 or 128.
Scale size to fit as needed

Notes.

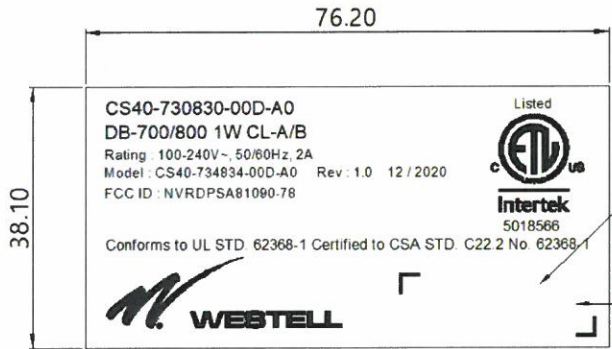
1. Quality of the material : White Polyester (J WORLD CO LTD JW-916 or JW-919)
2. Adhesive specification : UL969 (Permanent adhesive)
3. Printed color : Black (Exclude Designated Parts)
4. No text smudging, erasing, etc.
5. Quantity : 1EA

Design And Process Change No Changes In Material Design Or Process Which Will Effect Form, Fit Or Function Shall Be Made By The Manufacturer After Sample Approval Without Written Authority From INNERTRON	DWG.Name	PSR Label-12	Title	
	Mec. Design	M.R.Yang	Public Safety Repeater	
	Ele. Design	C.H.Lee	IT-DWG No.	IT1098001-P012
	Approve	S.D.Seo		
	Unit mm	SHT 1/1 Scale 1:1		



RoHS Compliant

Rev.	Customer Rev.	Description	Date	Reviser	Checked
R0	-	Temporary drawing issue	20201112	M.R.Yang	S.Y.Choi



Separate Label Attachment

Barcode Format: Code 39 or 128.
Scale size to fit as needed

Notes.

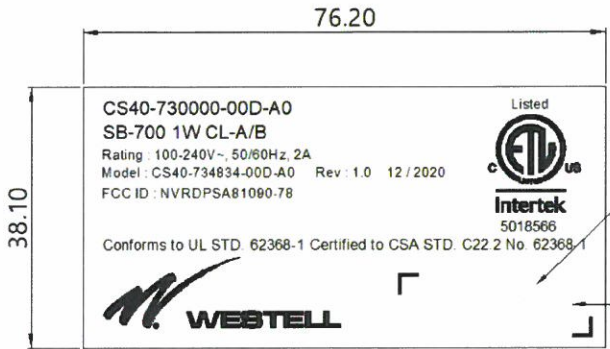
1. Quality of the material : White Polyester (J WORLD CO LTD JW-916 or JW-919)
2. Adhesive specification : UL969 (Permanent adhesive)
3. Printed color : Black (Exclude Designated Parts)
4. No text smudging, erasing, etc.
5. Quantity : 1EA

Design And Process Change No Changes In Material Design Or Process Which Will Effect Form, Fit Or Function Shall Be Made By The Manufacturer After Sample Approval Without Written Authority From INNERTRON	DWG.Name	PSR Label-xxx	Title	
	Mec. Design	M.R.Yang	Public Safety Repeater	
	Ele. Design	C.H.Lee	IT-DWG No.	IT1098001-POxx
	Approve	S.D.Sec		
	Unit mm	SHT 1/1 Scale 1:1		



RoHS Compliant

Rev.	Customer Rev.	Description	Date	Reviser	Checked
RD	-	Temporary drawing issue	2020.11.12	M.R.Yang	S.Y.Choi



Notes.

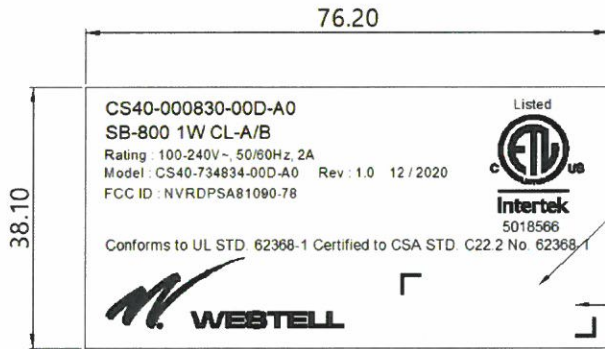
1. Quality of the material : White Polyester (J WORLD CO LTD JW-916 or JW-919)
2. Adhesive specification : UL969 (Permanent adhesive)
3. Printed color : Black (Exclude Designated Parts)
4. No text smudging, erasing, etc.
5. Quantity : 1EA

Design And Process Change No Changes In Material Design Or Process Which Will Effect Form, Fit Or Function Shall Be Made By The Manufacturer After Sample Approval Without Written Authority From INNERTRON	DWG.Name	PSR Label-xxx	Title	
	Mec. Design	M.R.Yang	Public Safety Repeater	
	Ele. Design	C.H.Lee	IT-DWG No.	IT1098001-POxx
	Approve	S.D.Sec		
	Unit mm	SHT 1/1 Scale 1:1		



RoHS Compliant

Rev.	Customer Rev.	Description	Date	Reviser	Checked
R0	-	Temporary drawing issue	2020.11.12	M.R.Yang	S.Y.Choi



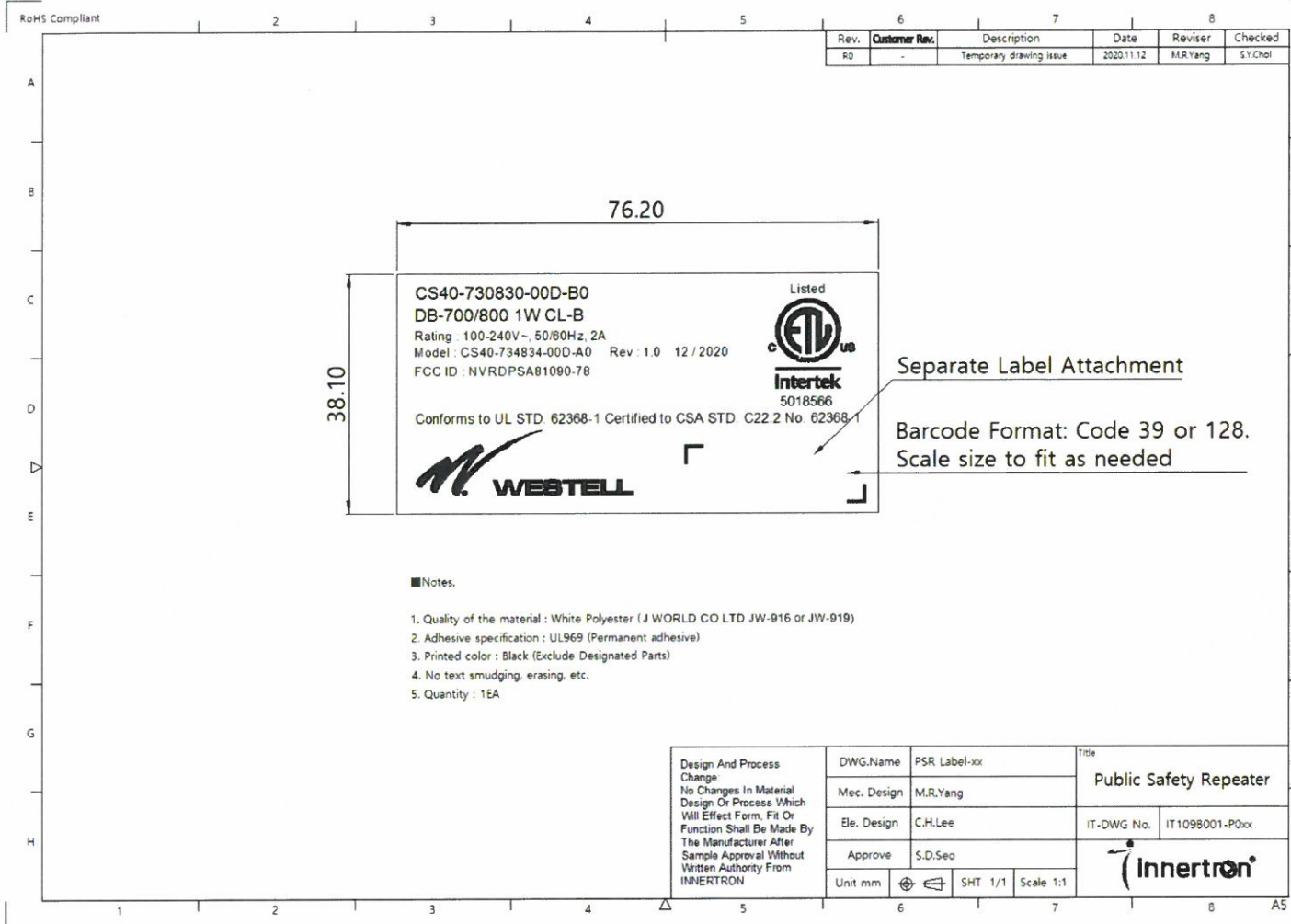
Separate Label Attachment

Barcode Format: Code 39 or 128.
Scale size to fit as needed

■ Notes.

1. Quality of the material : White Polyester (J WORLD CO LTD JW-916 or JW-919)
2. Adhesive specification : UL969 (Permanent adhesive)
3. Printed color : Black (Exclude Designated Parts)
4. No text smudging, erasing, etc.
5. Quantity : 1EA

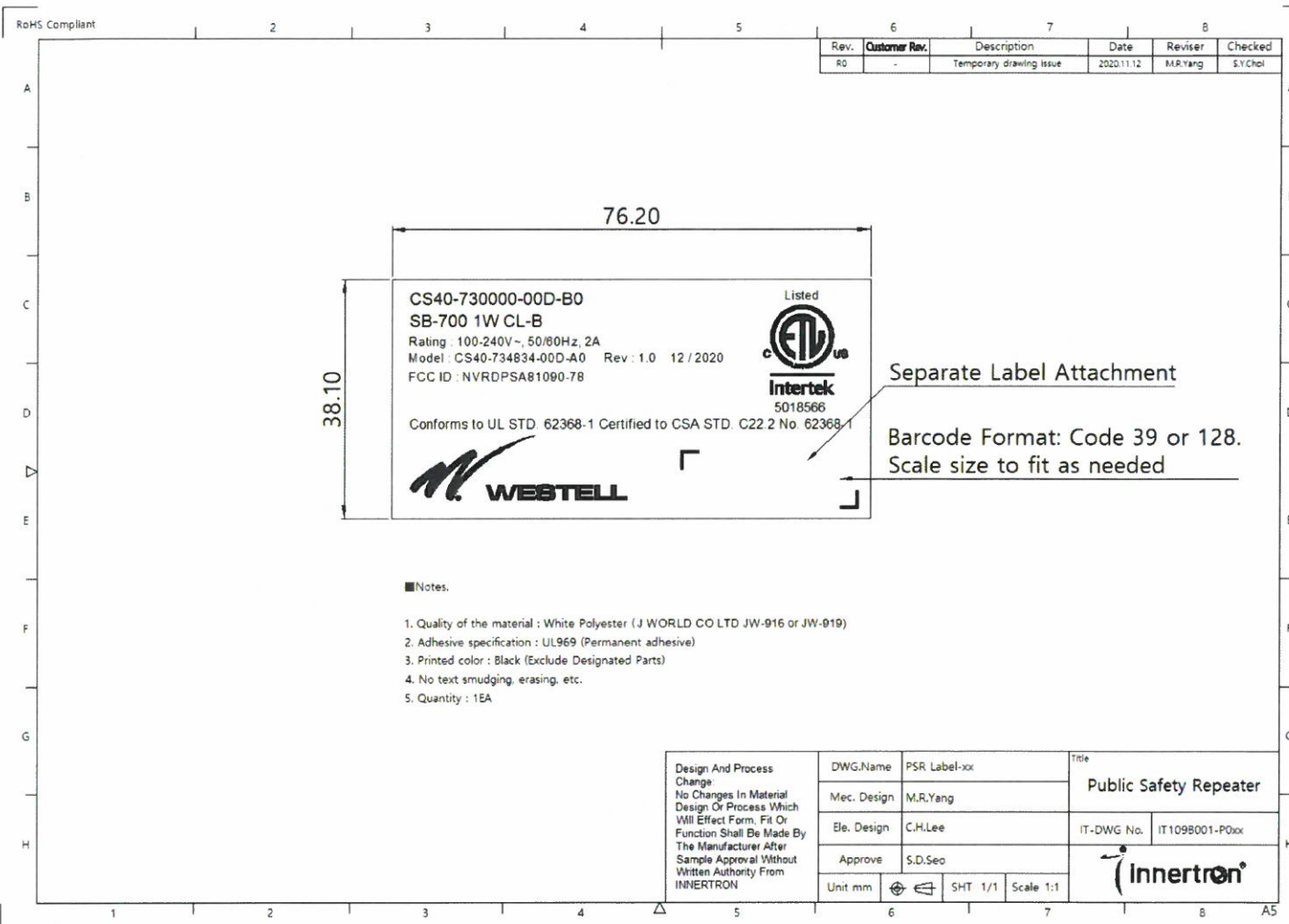
Design And Process Change: No Changes In Material Design Or Process Which Will Effect Form, Fit Or Function Shall Be Made By The Manufacturer After Sample Approval Without Written Authority From INNERTRON	DWG.Name	PSR_Label-xxx	Title	
	Mec. Design	M.R.Yang	Public Safety Repeater	
	Ele. Design	C.H.Lee	IT-DWG No.	IT1098001-P0xx
	Approve	S.D.Sec		
	Unit mm	SHT 1/1 Scale 1:1		



- Notes.
1. Quality of the material : White Polyester (J WORLD CO LTD JW-916 or JW-919)
 2. Adhesive specification : UL969 (Permanent adhesive)
 3. Printed color : Black (Exclude Designated Parts)
 4. No text smudging, erasing, etc.
 5. Quantity : 1EA

Design And Process Change No Changes In Material Design Or Process Which Will Effect Form, Fit Or Function Shall Be Made By The Manufacturer After Sample Approval Without Written Authority From INNERTRON	DWG.Name	PSR Label-xxx	Title	
	Mec. Design	M.R.Yang	Public Safety Repeater	
	Ele. Design	C.H.Lee	IT-DWG No.	IT109B001-P0xx
	Approve	S.D.Seo		
Unit mm	SHT 1/1 Scale 1:1			

750 North Commons Drive
 Aurora, IL 60504 USA
 (630) 898-2500



Signature: Date: 12/4/2020

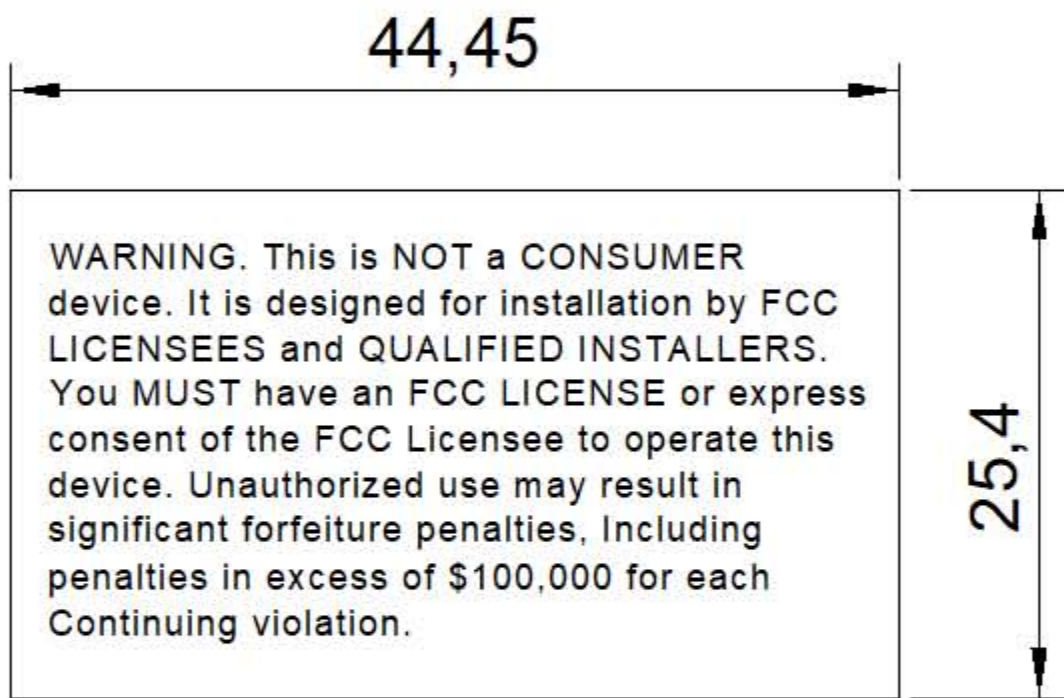
Name: Joseph Gage

Title: Compliance Engineer

Company: Westell, Inc.

750 North Commons Drive
 Aurora, IL 60504 USA
 (630) 898-2500

Rev.	Customer Rev.	Description	Date	Revised	Checked
R0	-	Temporary drawing issue	2020.09.02	C.H.Lee	C.H.Lee



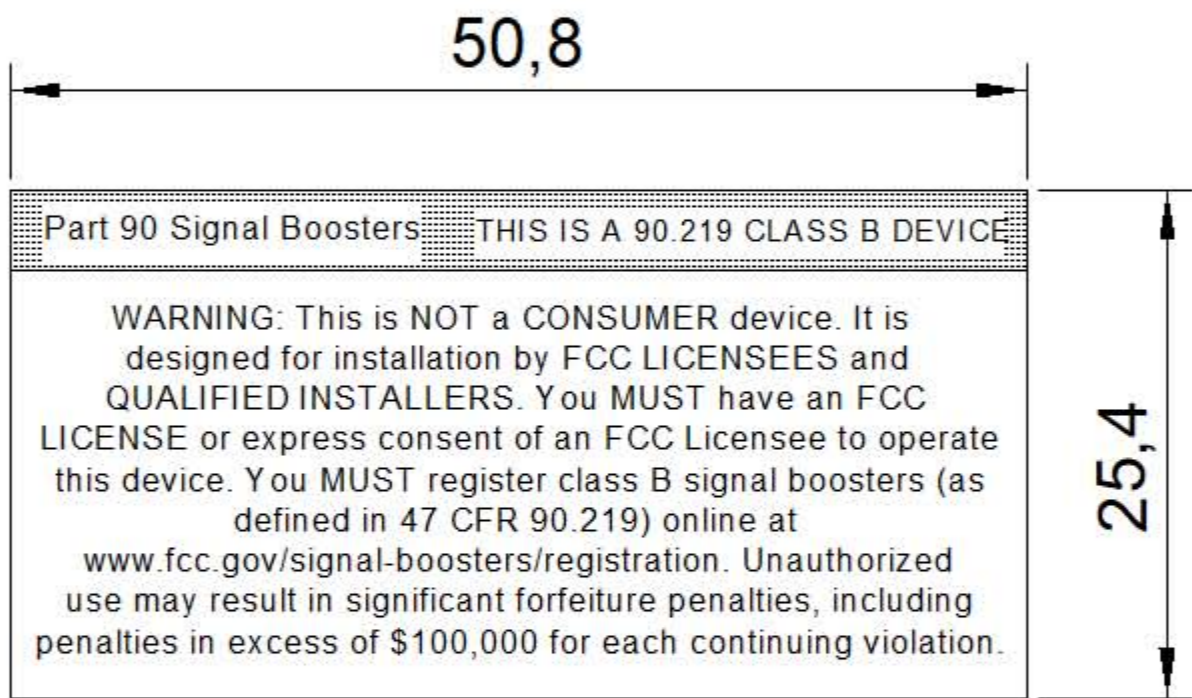
NOTE : Unless otherwise specified

- 1. J WORLD CO LTD JW-916 or JW-919
- 2. Print Color : Black

Design And Process Change: No Changes In Material Design Or Process Which Will Effect Form, Fit Or Function Shall Be Made By The Manufacturer After Sample Approval Without Written Authority From INNERTRON	DWG Name		Outline Drawing		Title	
	Mec. Design		C.H.Lee		FCC WARNING LABEL	
	Elec. Design		C.H.Lee		IT-DWG No.	
	Approve		S.D.Seo			
	Unit mm		SHT: 1/1	Scale 1:1		





Rev.	Customer Rev.	Description	Date	Revised	Checked
R0	-	Temporary drawing issue	2020.09.02	C.H.Lee	C.H.Lee

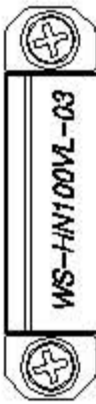


NOTE : Unless otherwise specified

- 1. J WORLD CO LTD JW-916 or JW-919
- 2. Print Color : Black

Design And Process Change: No Changes In Material Design Or Process Which Will Effect Form, Fit Or Function Shall Be Made By The Manufacturer After Sample Approval Without Written Authority From INNERTRON	DWG Name Outline Drawing		Title FCC PART 90 LABEL	
	Mec. Design C.H.Lee		IT-DWG No.	
	Ele. Design C.H.Lee			
	Approve S.D.Seo			
	Unit mm	 SHT 1/1		

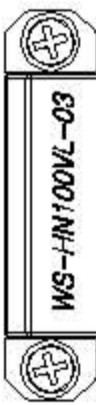




WS-IN100VL-03



WOOBUNG-M100



WS-IN100VL-03



WOOBUNG-M100

WARNING: This is NOT a CONSUMER device. It is designed for installation by FCC LICENSEES and QUALIFIED INSTALLERS. You MUST have an FCC LICENSE to operate this device. Unauthorized use may result in significant forfeiture penalties, including penalties in excess of \$100,000 for each Continuing violation.

FOR FCC PART 90 USE ONLY

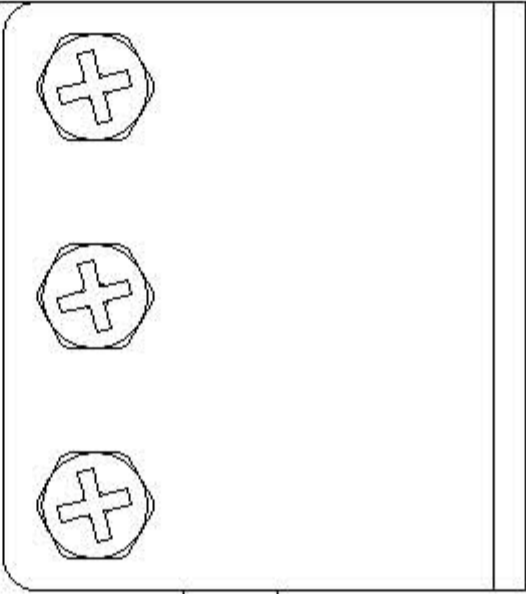
WARNING: This is NOT a CONSUMER device. It is designed for installation by FCC LICENSEES and QUALIFIED INSTALLERS. You MUST have an FCC LICENSE or express consent of an FCC Licensee to operate this device. Unauthorized use may result in significant forfeiture penalties, including penalties in excess of \$100,000 for each Continuing violation.

Model: CS40-734834-000-A0
 DESC: DB-700800 2.5W CL-A8
 Rating: 100-200V, 50/60Hz, 3A
 FCC ID: XXXXXXXXXX
 IC: XXXXXXXXXX

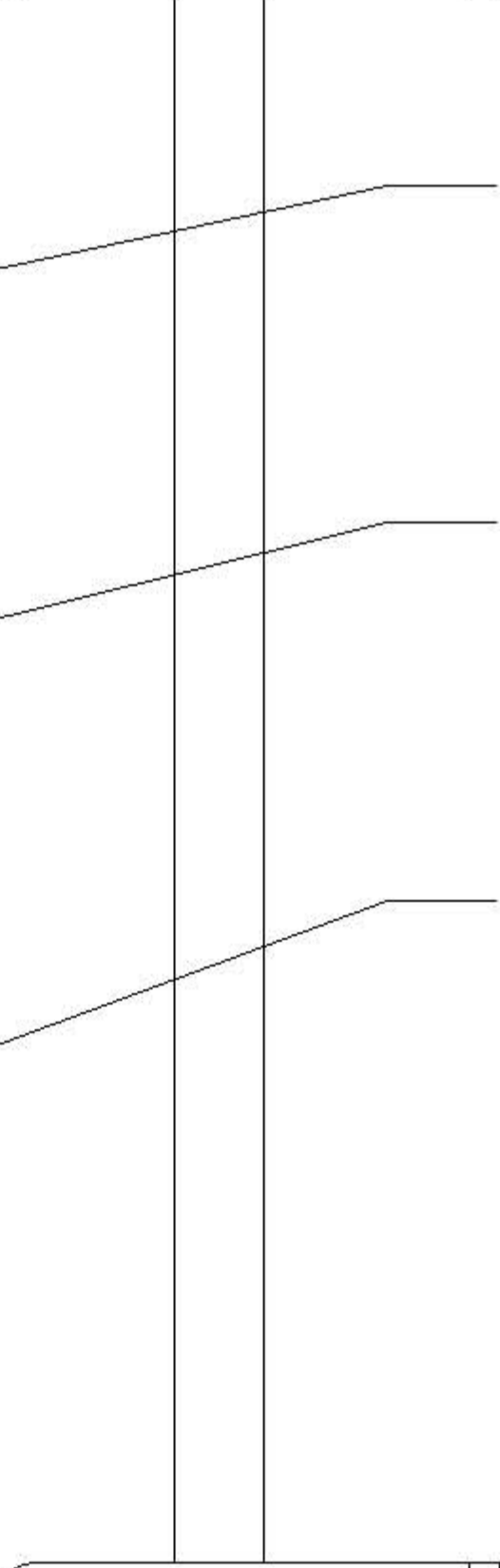
WESTELL XXXXXXXX No. 923884-1

CONFORMS TO
 U.S. STD. R278A-1
 CAN. STD. 110
 CSA STD. C22.2
 No. 923884-1

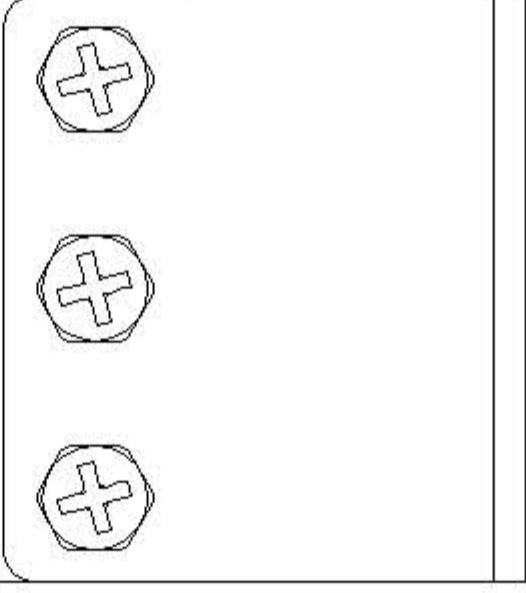




FCC WARNING LABEL



FCC PART 90 LABEL



ETL LABEL