

DSP IC

(10) -28V

ANTENNA

Alarm (Charge)
Alarm ID
Dist. Assistor

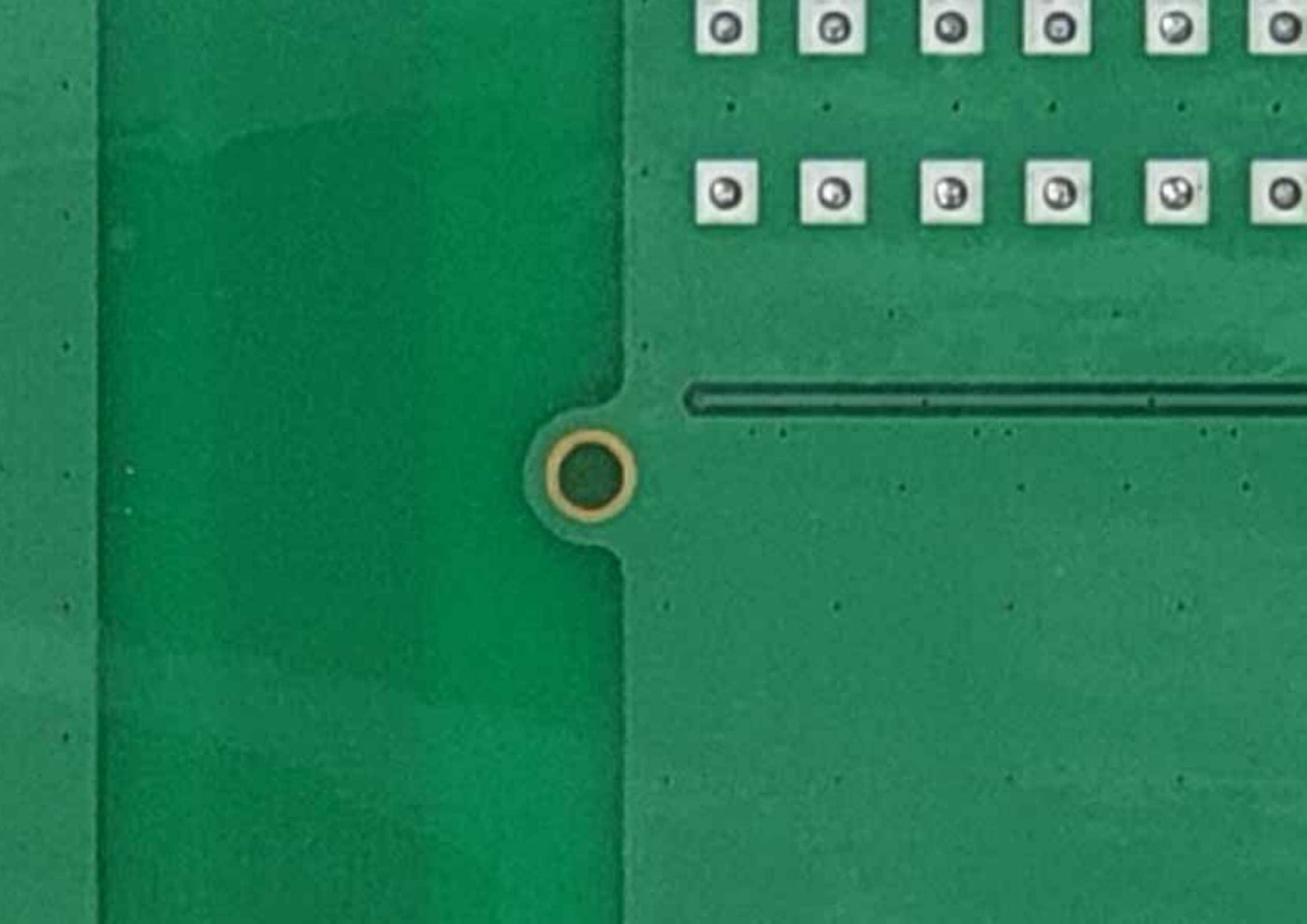
FACTORY RESET

EMERGENCY POWER OFF
AC POWER NORMAL
LOSS AC POWER
BATTERY CAPACITY LOW
BATTERY CHARGER FAIL
RF EMITTER FAIL
DONOR ANTENNA MALFUNCTION
DONOR ANTENNA DISCONNECT
SYSTEM COMPONENT FAIL

Alarm (HEAD END DAS)
Alarm (RS485)
Alarm (+28V)
Alarm (Local)

ON
OFF
CPU DC

12V
12V
AC
N
AC
N
P.O.



B



C32



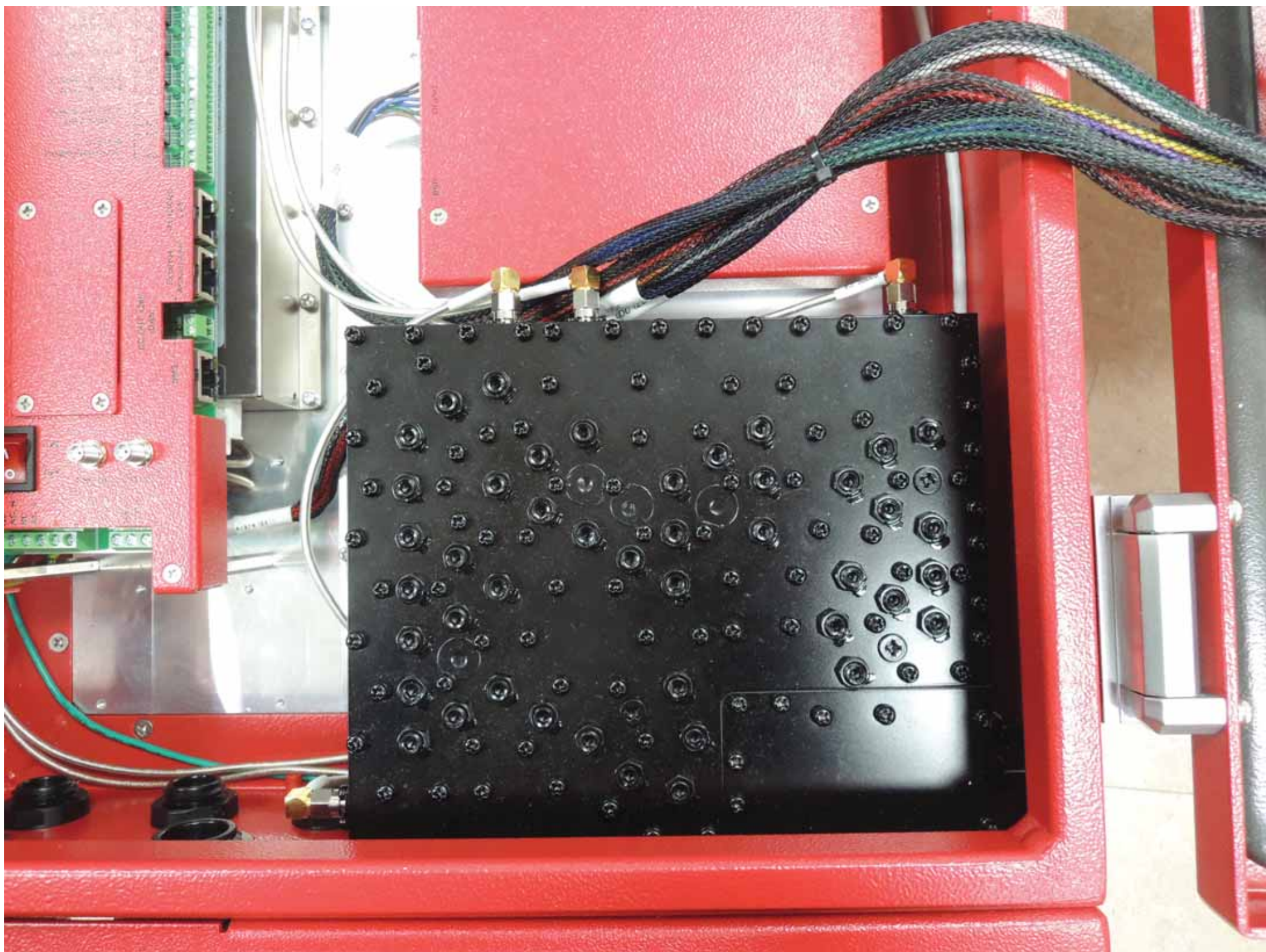
C31



HEAD END
(Customer Installed)



ator
(Left)





R4035T19D1
DAVE

R4035P18E3
DAVE

R836
023

R4035P18E3
DAVE

5781
016

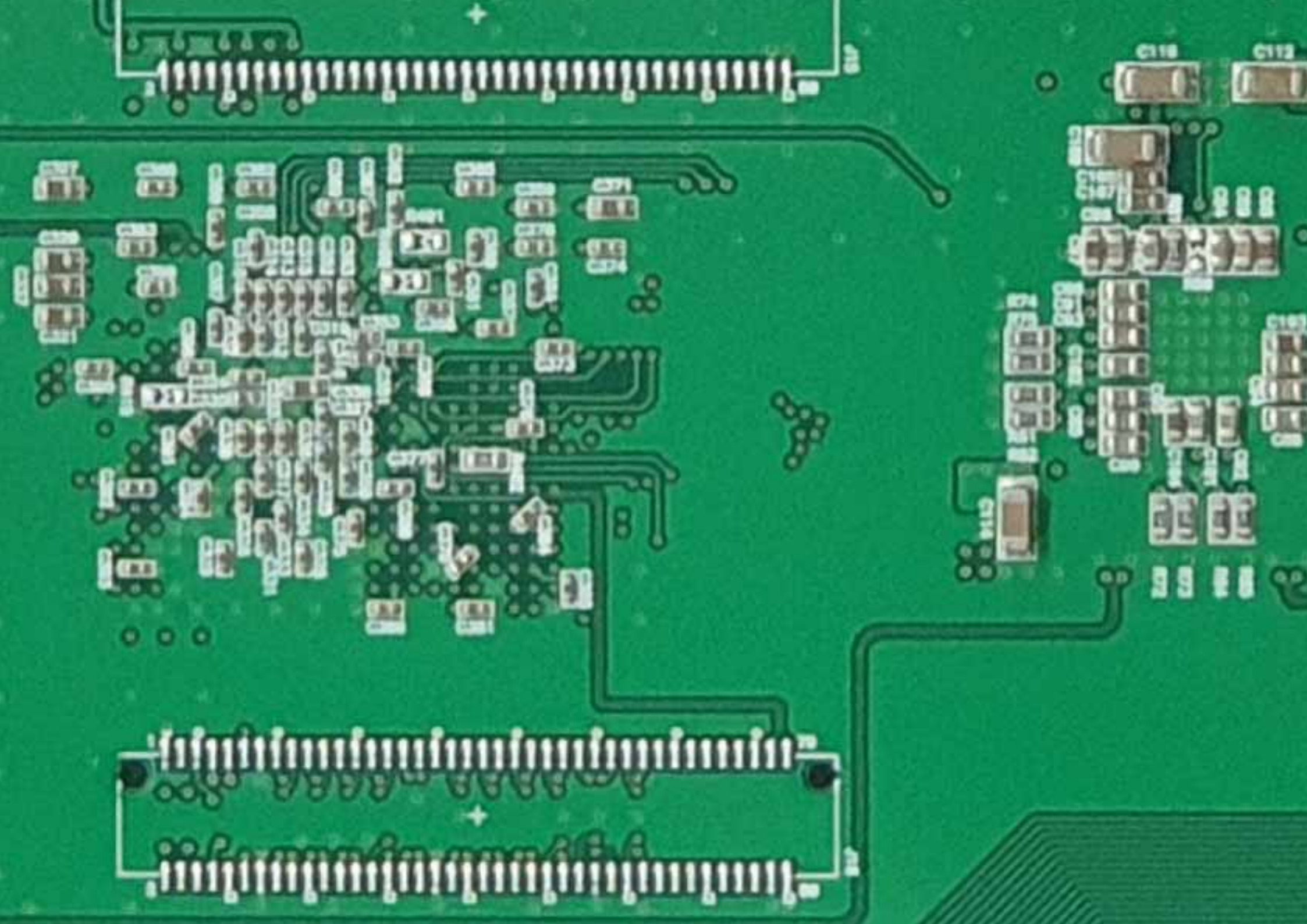


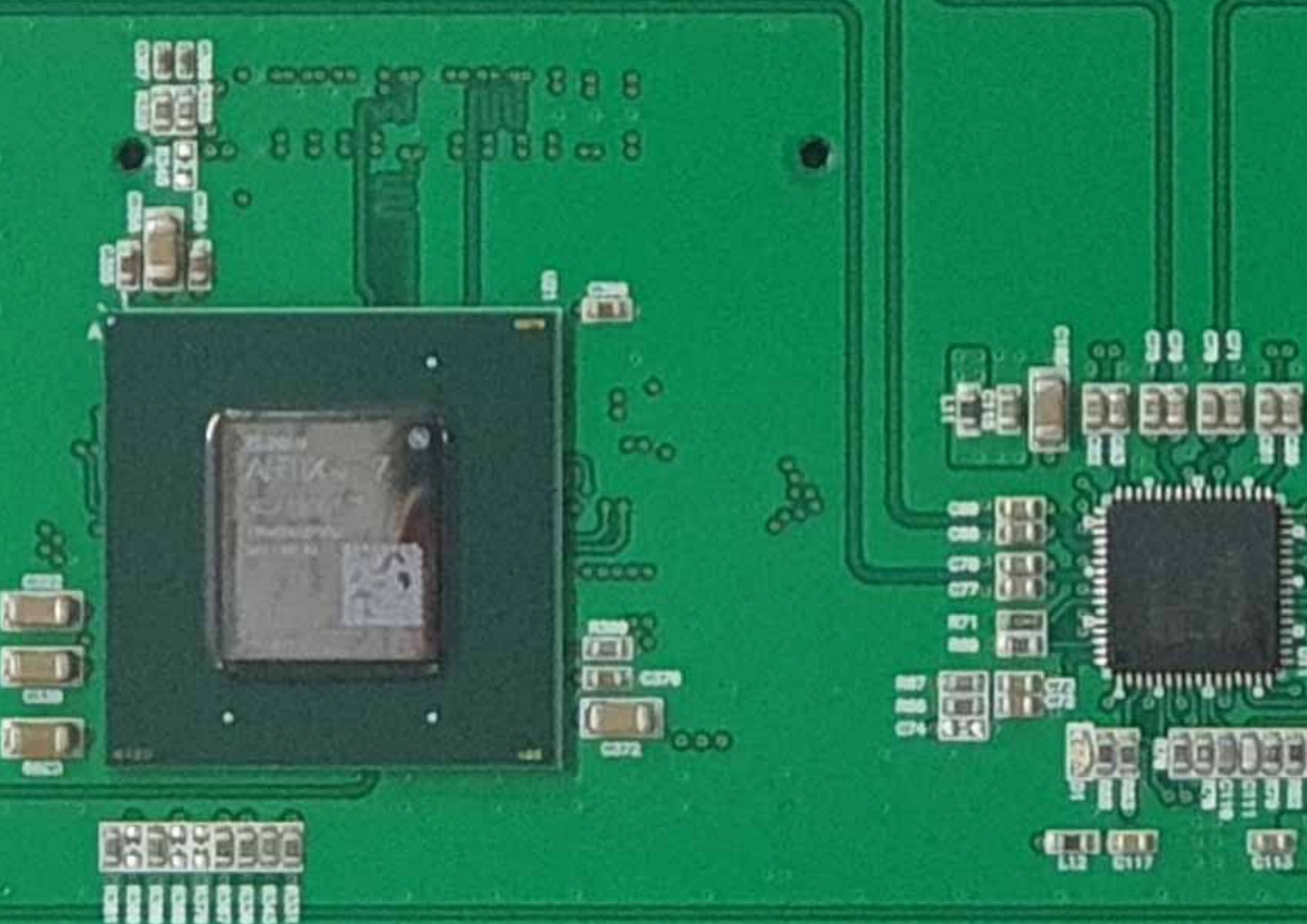
PSR UDC Module
B-PCB (U.A. DAC & Interface)
REV 0.3 200808

1 2 3 4 5 6 7 8 9 10 11 12 13 14 15 16 17 18 19 20 21 22 23 24 25 26 27 28 29 30 31 32 33 34 35 36 37 38 39 40 41 42 43 44 45 46 47 48 49 50 51 52 53 54 55 56 57 58 59 60 61 62 63 64 65 66 67 68 69 70 71 72 73 74 75 76 77 78 79 80 81 82 83 84 85 86 87 88 89 90 91 92 93 94 95 96 97 98 99 100

MIL-OK









Satellite

GPS

MCU (Serial/USB/Network)

MCU (I2C)

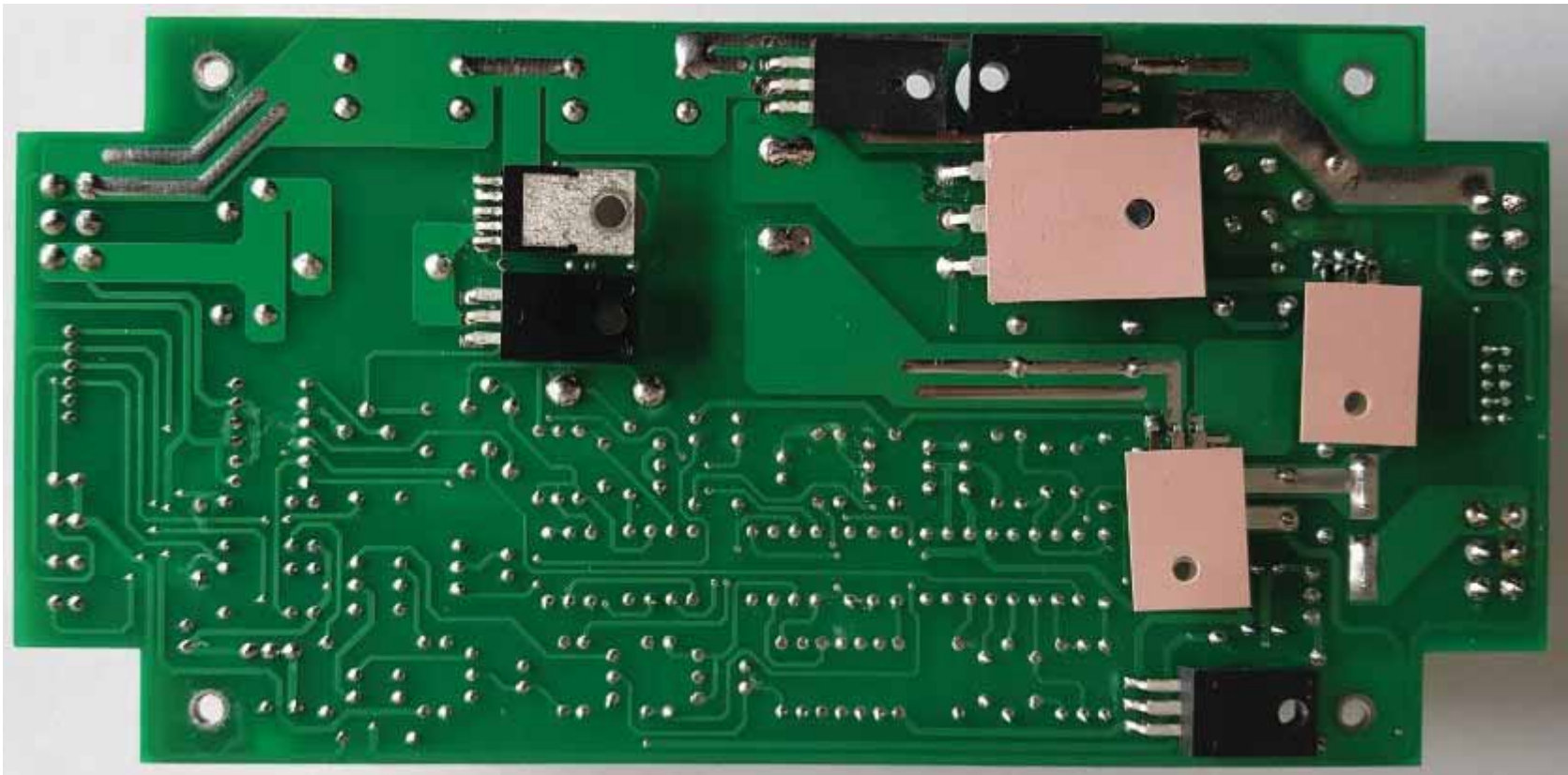
MCU (I2C)

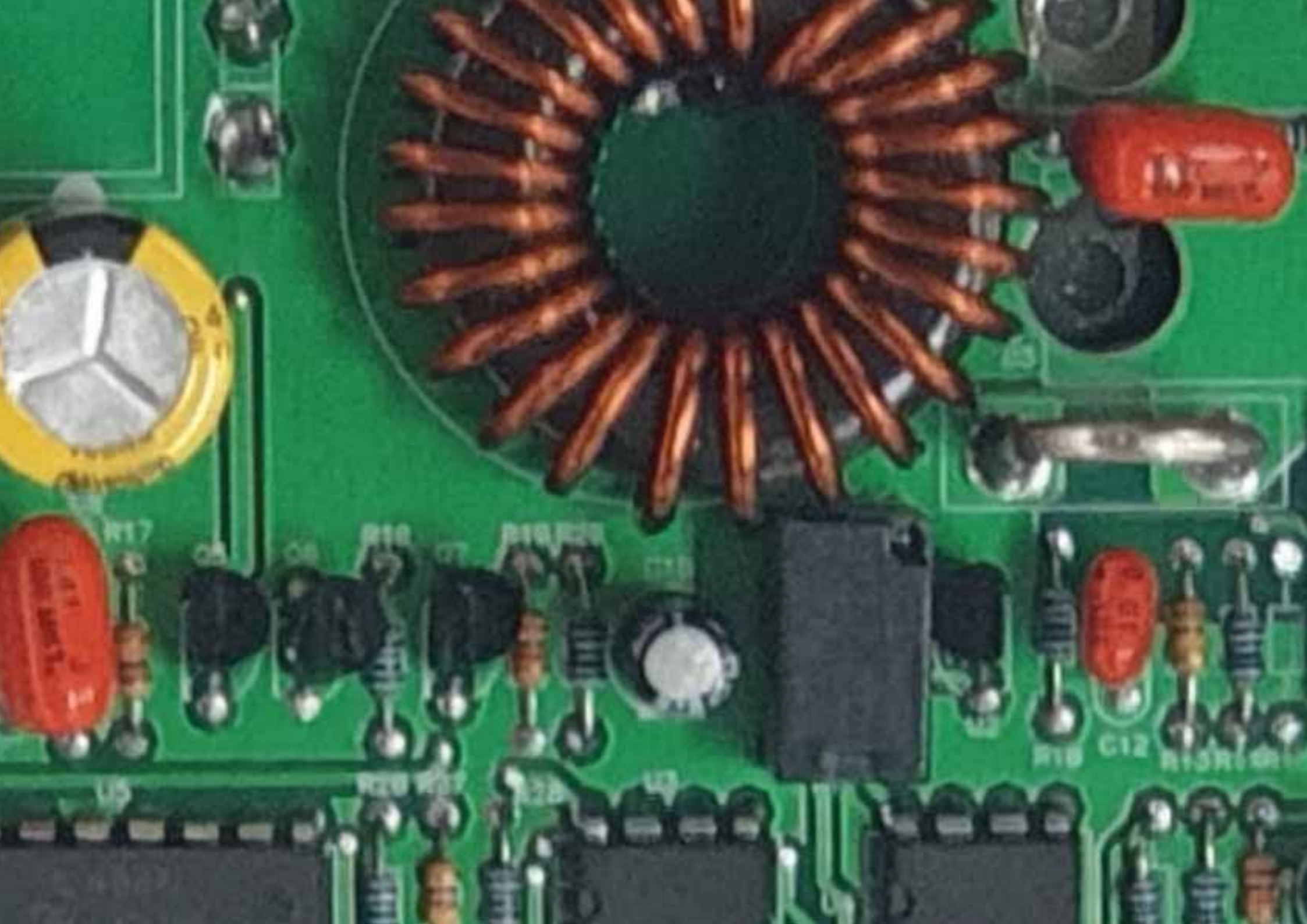
DC OUT PUT
+28V +28V
GND GND
+5V +5V

AC IN	+	-
BAT+ LOW	+	-
BAT+ HIGH	+	-
BAT- LOW	+	-
BAT- HIGH	+	-

DC IN - PUT
+28V +28V
+28V GND
GND GND

BATTERY IN
BAT+ BATT+
BAT+ GND
GND GND





1A5000

1A5000

R17

C8

C8

R18

C7

R19

R20

C11

R18

C12

R13

R14

U5

R21

R22

R23

R24

U4

U3

R15

R16

R17



OPEN RS-485
SHORT RS-422

< J7 : JUMPER Setting >

OPEN Normal
SHORT cMAC Write

< J6 : JUMPER Setting >

