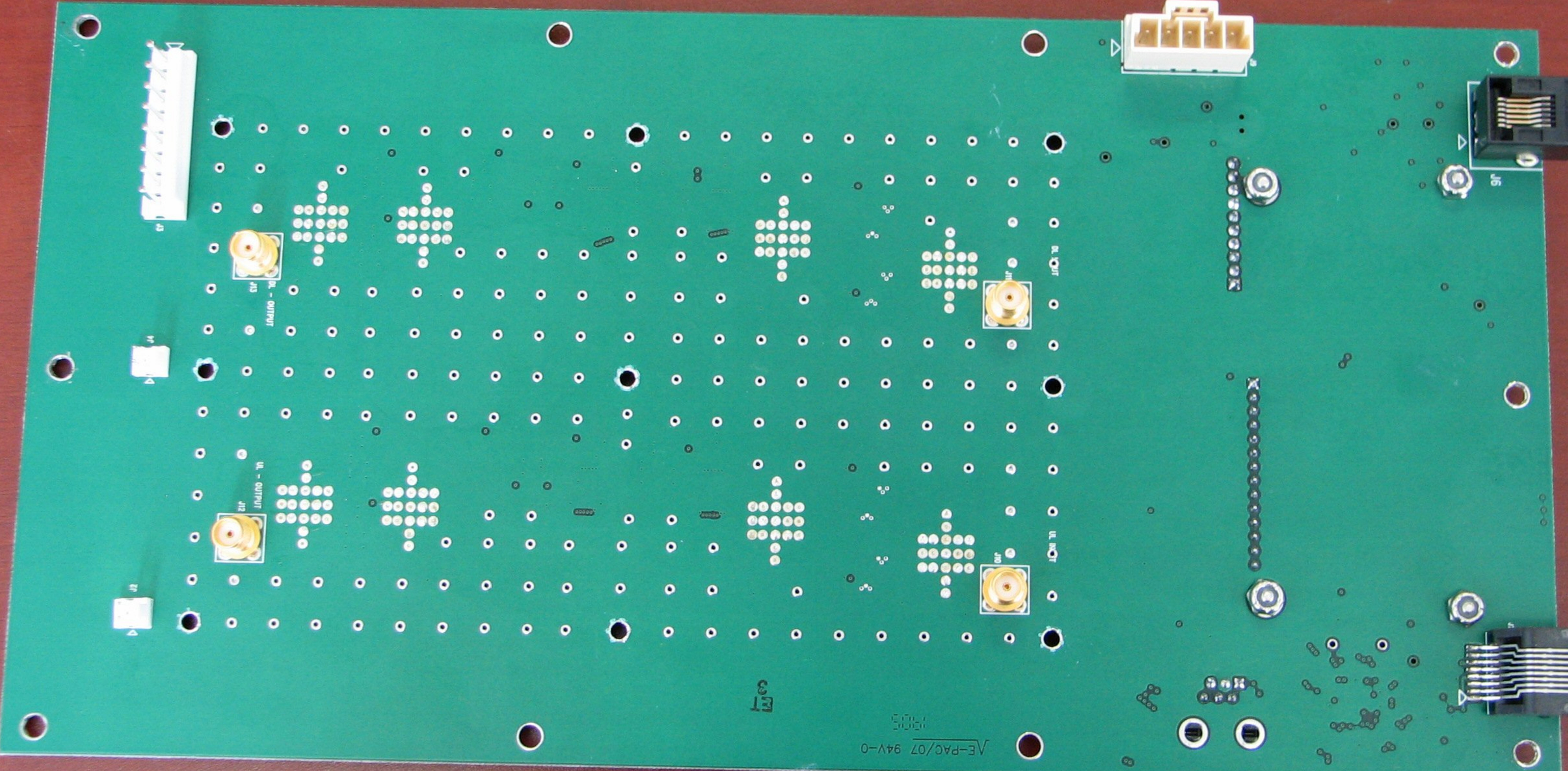


INSIDE ANTENNA

POWER

FAULT

OUTSIDE ANTENNA



VE-PAC/07 94V-0
1905

3571

J13
IN - OUTPUT

J12
IN - OUTPUT

J11

J14

J15

J16

010-2051-080-C

P/N

05511302

S/N

Order Specialist, Inc
Control of Access PCB
130-2041-001 Rev 0

+24 VDC
Fan 2

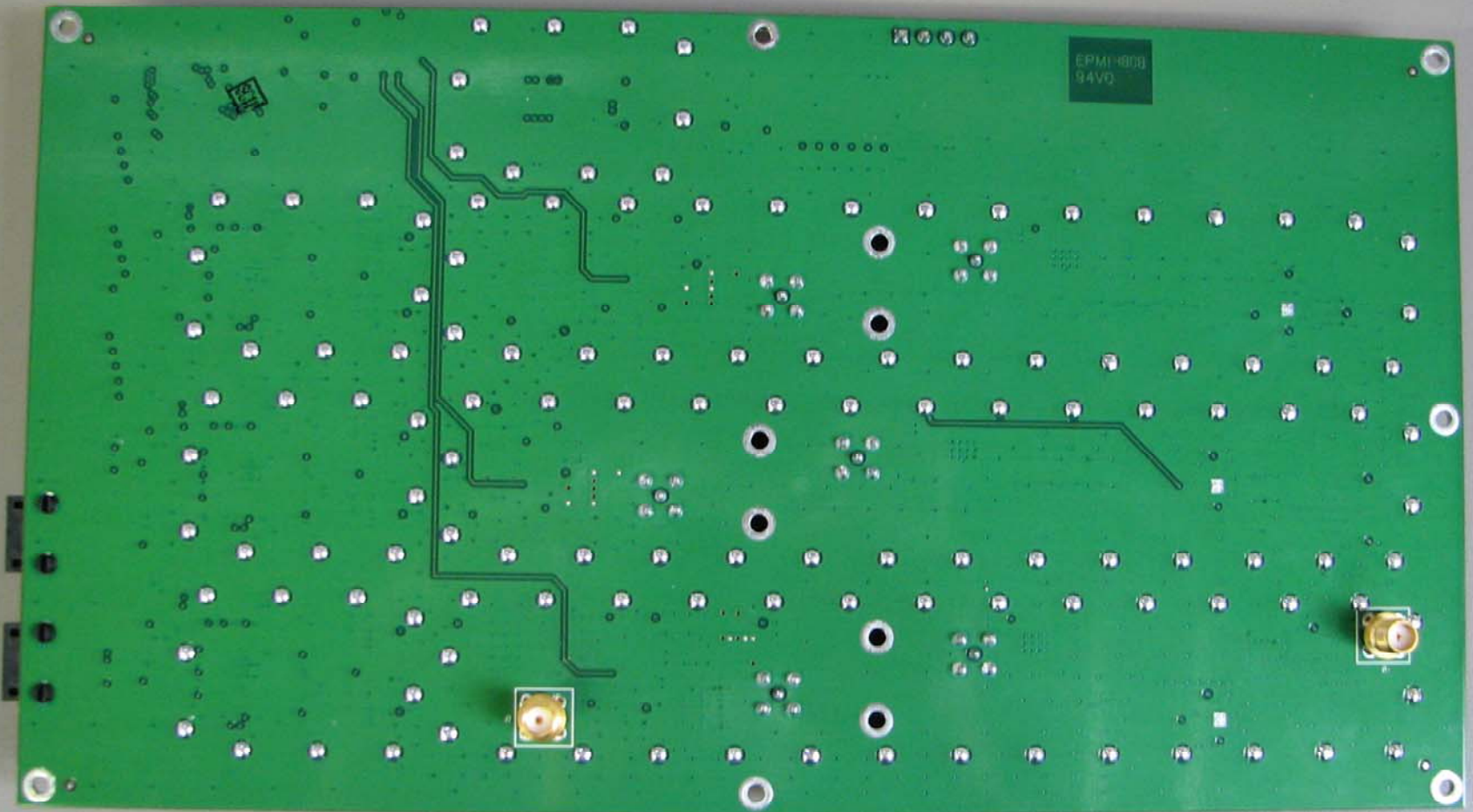
+24 VDC
Fan 1

Thermistor
B. Detector
D. Detector
+24 VDC
+24 VDC
+5 VDC
+5 VDC

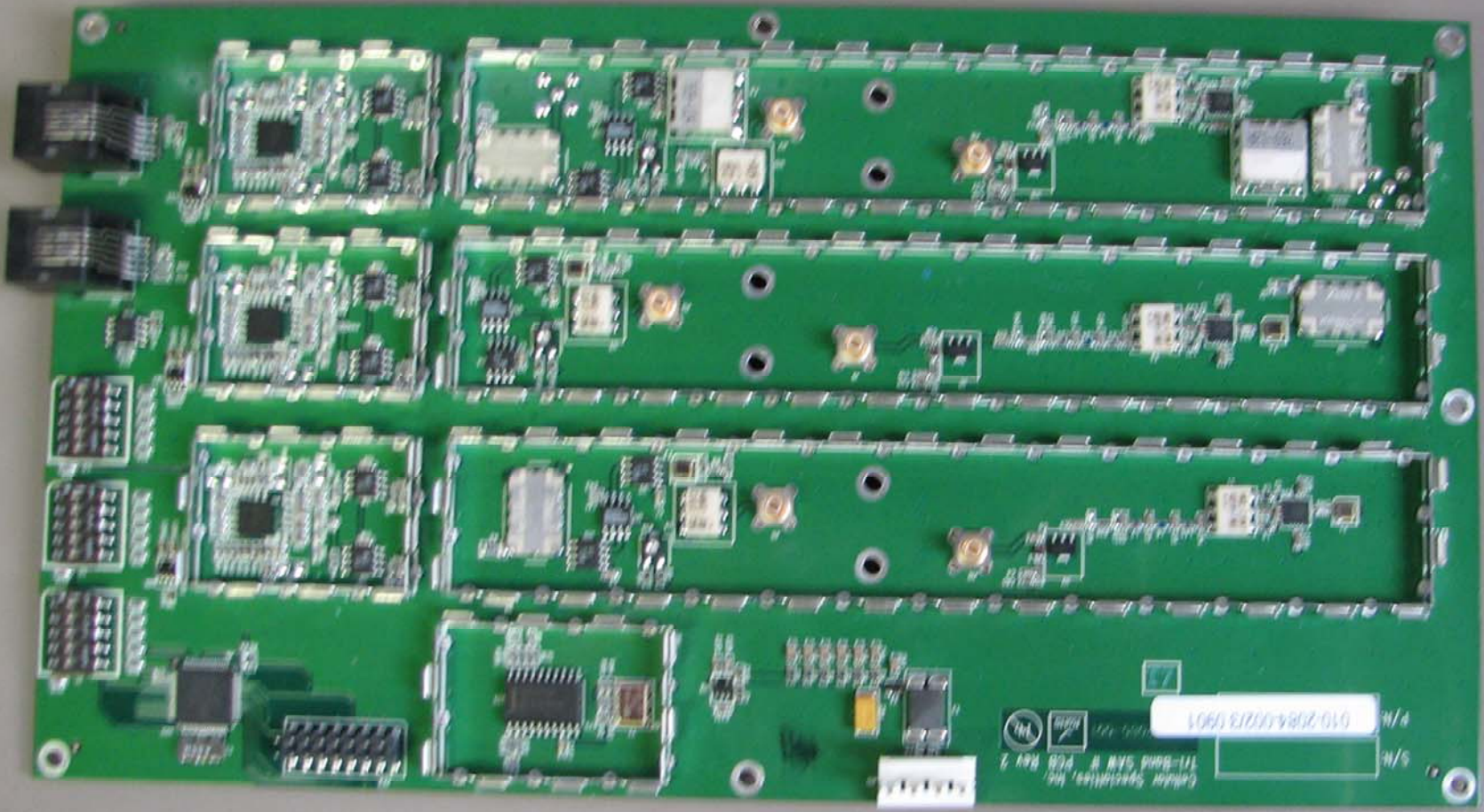
The image shows two large white PCB modules mounted on a green PCB. Each module contains several integrated circuits (ICs) and other components. The components are labeled with various alphanumeric codes such as U1, U2, U3, U4, U5, U6, U7, U8, U9, U10, U11, U12, U13, U14, U15, U16, U17, U18, U19, U20, U21, U22, U23, U24, U25, U26, U27, U28, U29, U30, U31, U32, U33, U34, U35, U36, U37, U38, U39, U40, U41, U42, U43, U44, U45, U46, U47, U48, U49, U50, U51, U52, U53, U54, U55, U56, U57, U58, U59, U60, U61, U62, U63, U64, U65, U66, U67, U68, U69, U70, U71, U72, U73, U74, U75, U76, U77, U78, U79, U80, U81, U82, U83, U84, U85, U86, U87, U88, U89, U90, U91, U92, U93, U94, U95, U96, U97, U98, U99, U100. The modules are connected to a central bus or power distribution network.

Downlink

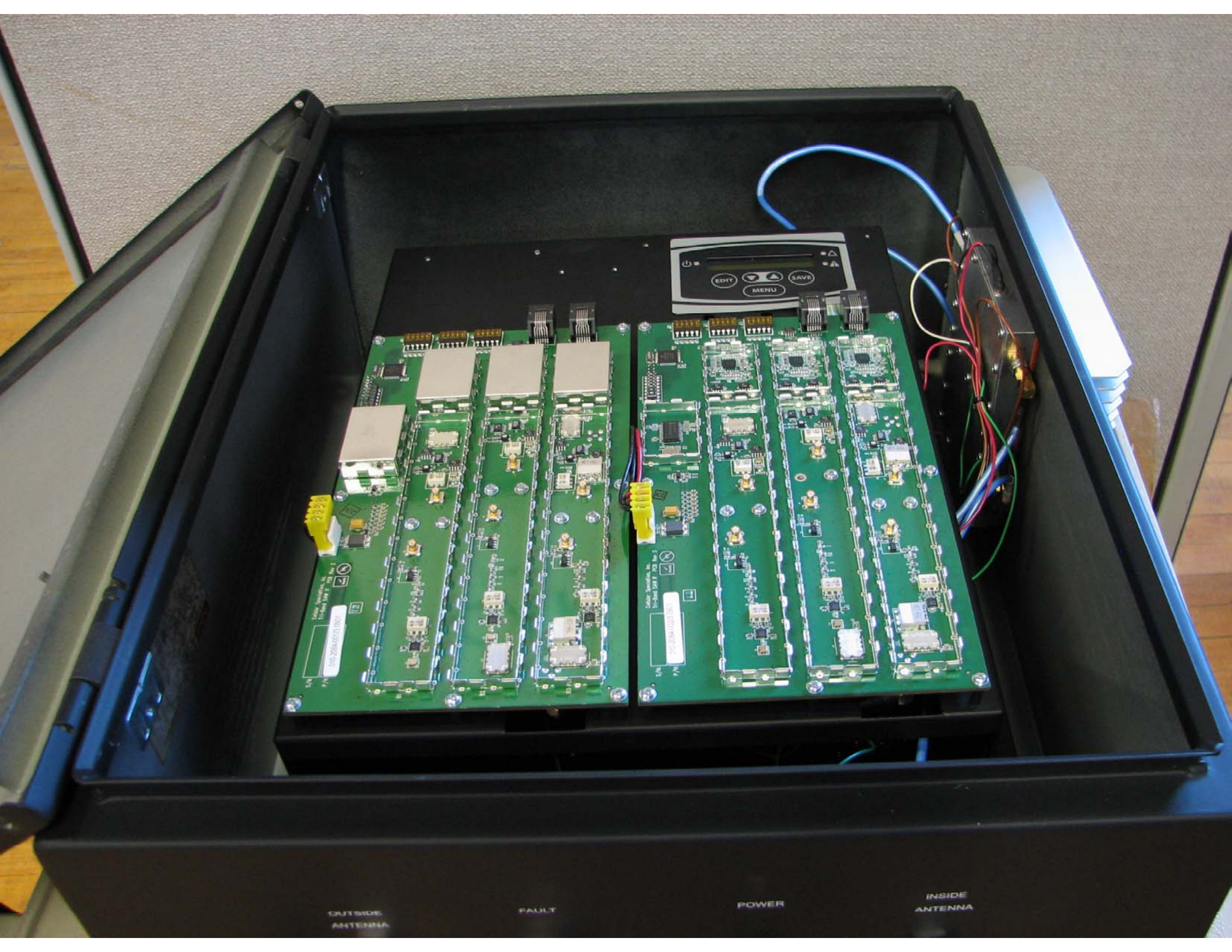
This section of the PCB contains several peripheral components. At the top right, there is a PDC1602M display module. Below it, there are several connectors, including a multi-pin connector labeled J1 and a smaller connector labeled J2. There are also several integrated circuits (ICs) and other components, including a chip labeled 2430. The PCB is populated with various passive components like resistors and capacitors, and is connected to other parts of the system via various cables and connectors.

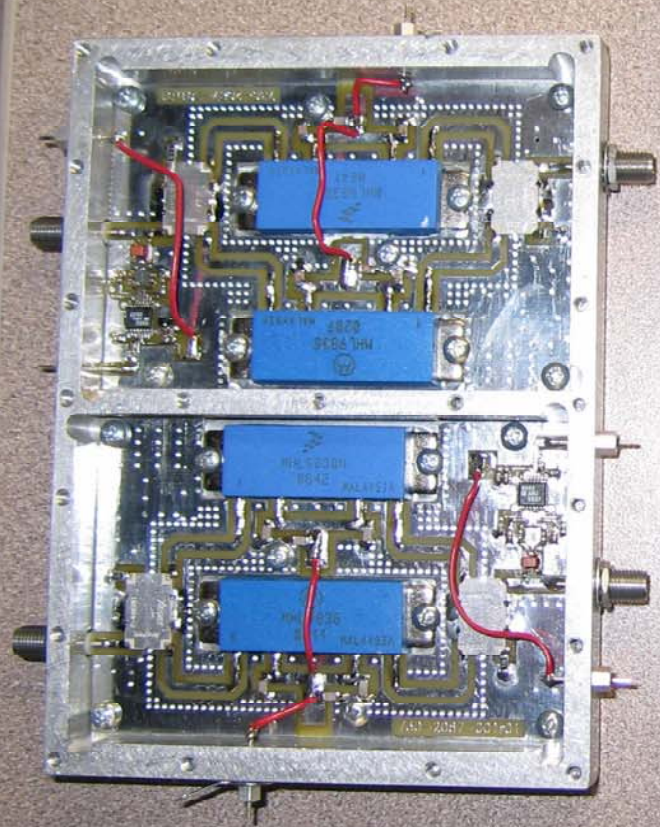


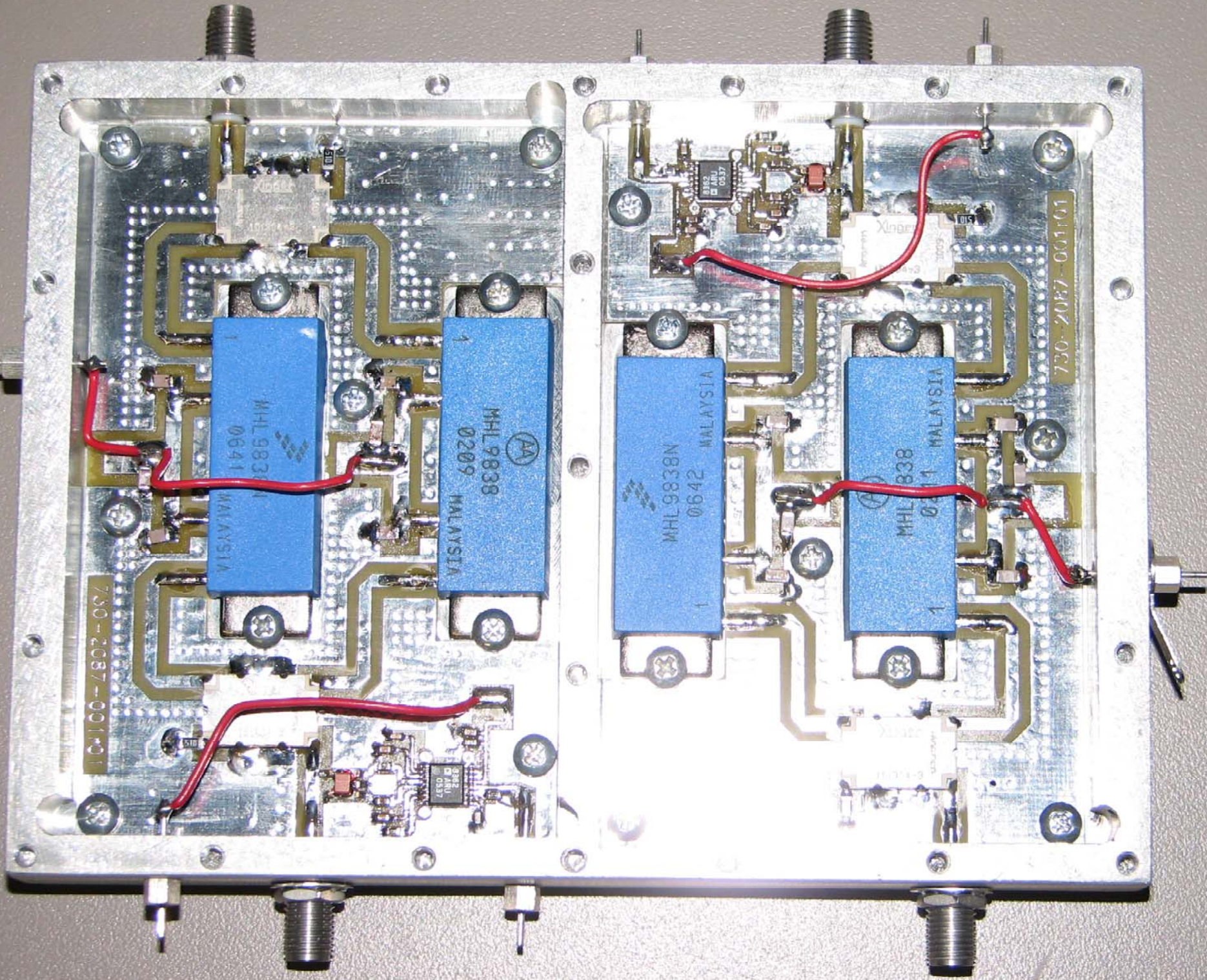
EPM10K10
94V0



S/N:
 P/N: 010-20845773-0901
 711-Band SAW R PCB Rev 2
 Caliber Specialists, Inc.
 10/10/07







730-2087-00101

MHL 9838
0641
MALAYSIA

MHL 9838
0209
MALAYSIA

MHL 9838N
0642
MALAYSIA

MHL 838
0111
MALAYSIA

730-2087-00101