

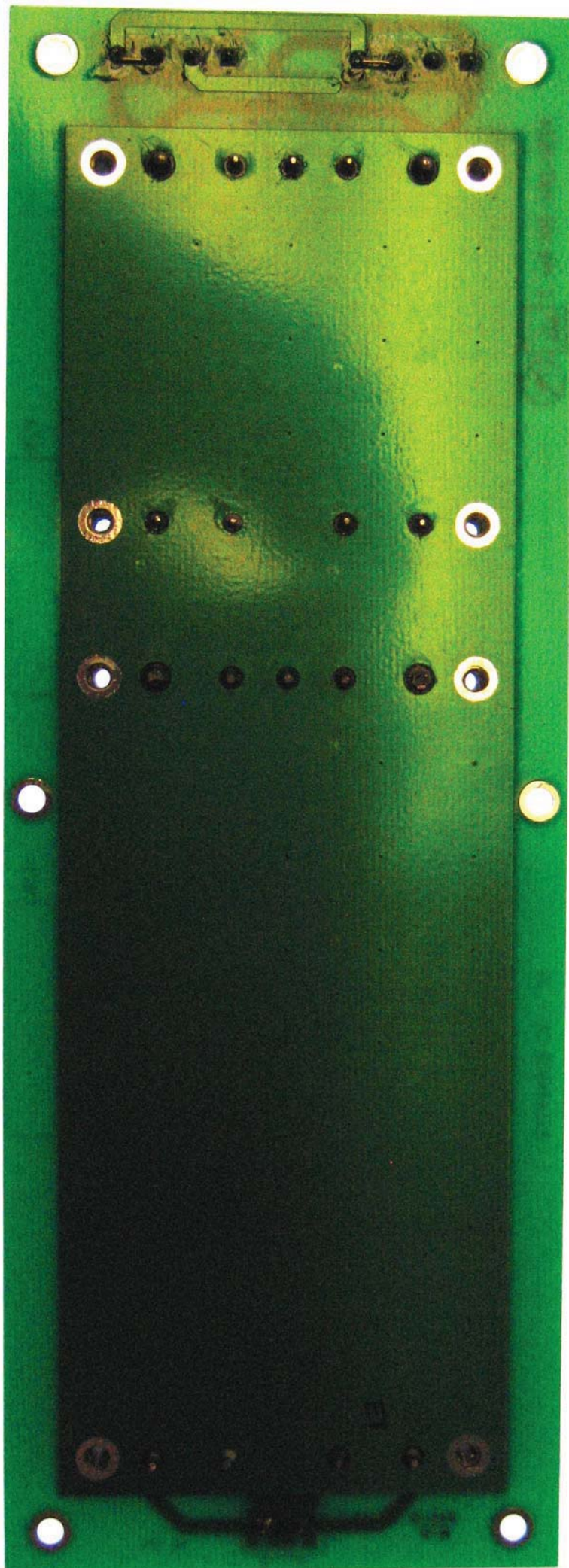
R730-2104-001 Rev 2

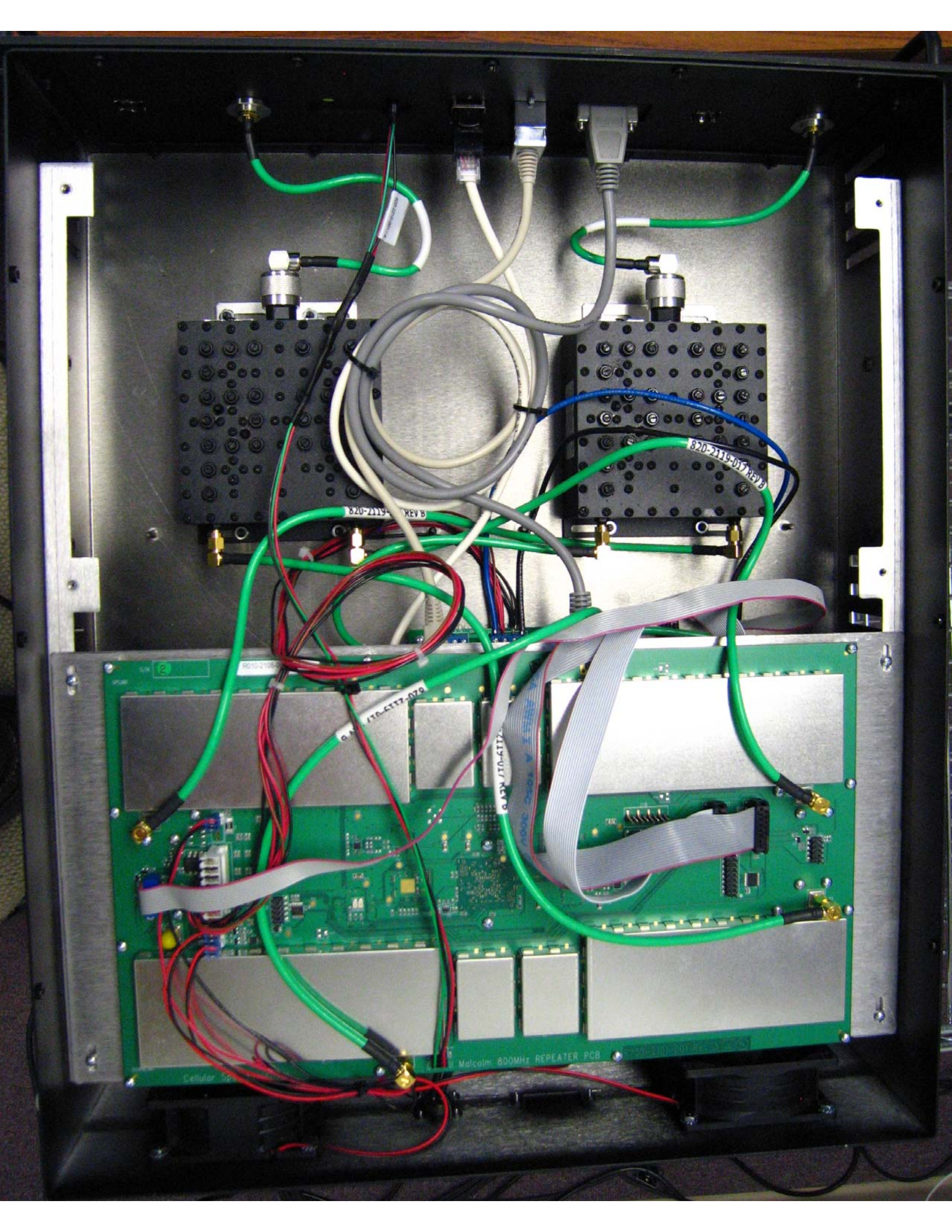


DC - DC CONVERTER

WE528

DC - DC CONVERTER





820-2119-017 REV B

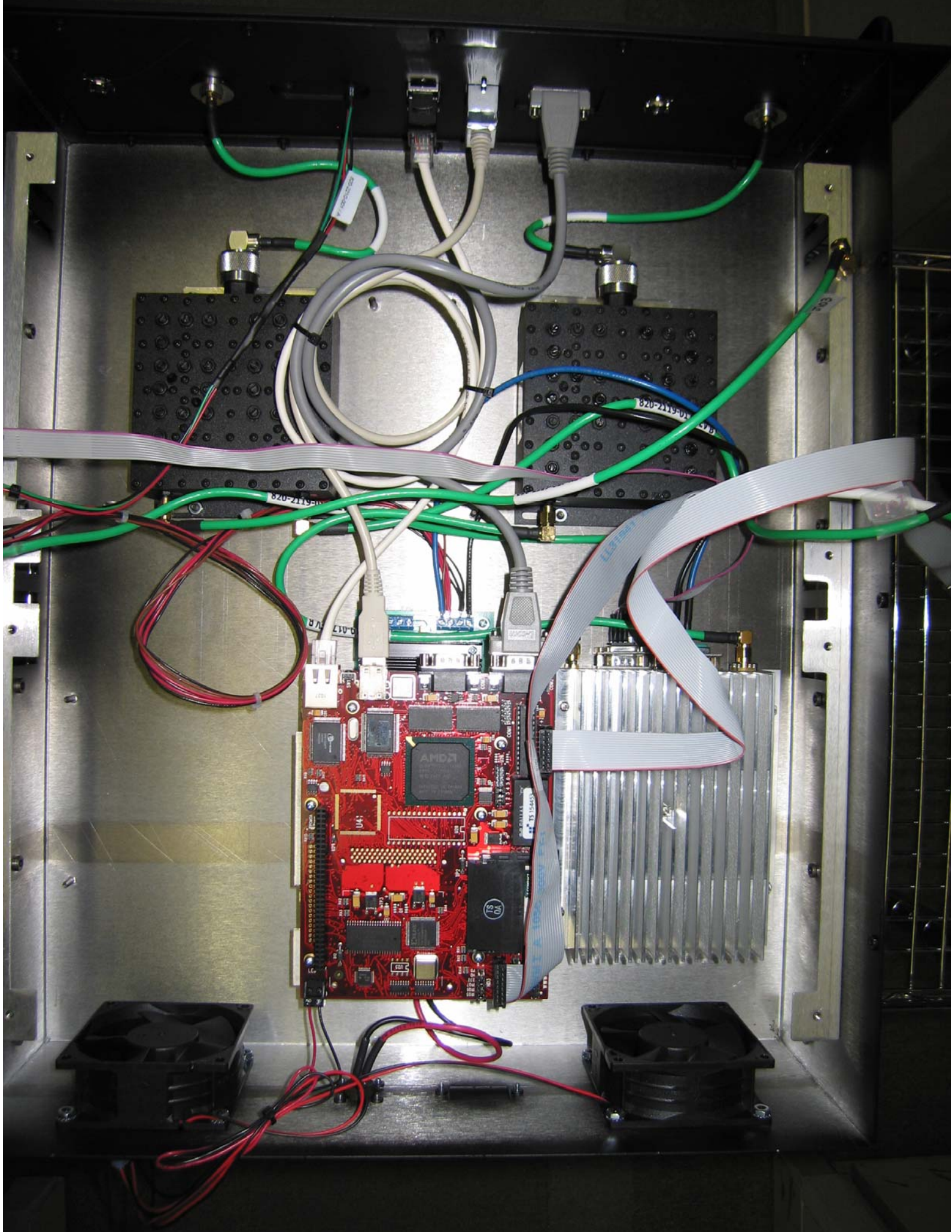
820-2119-017 REV B

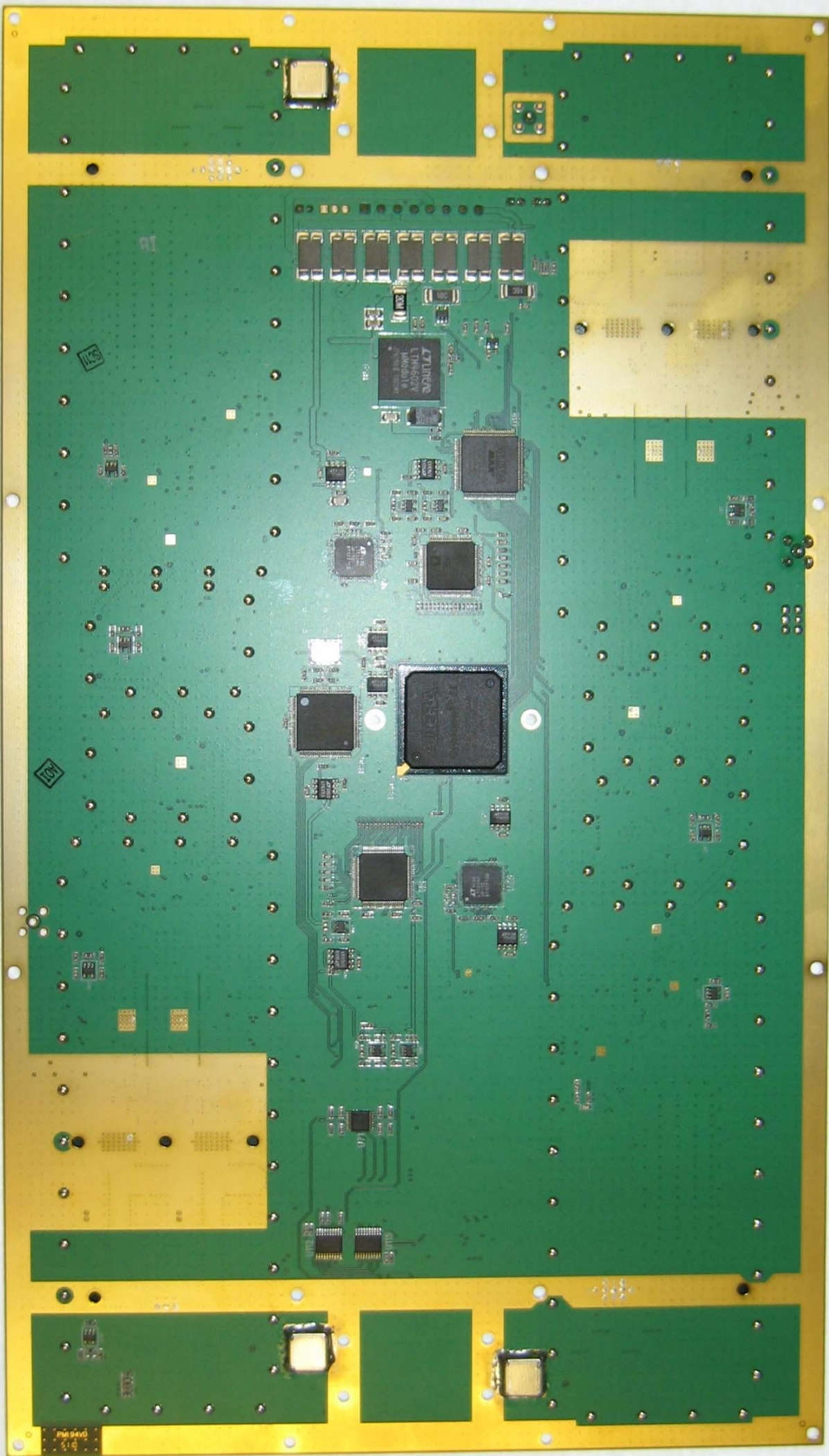
170-6177-079

170-6177-079

Malcolm 800MHz REPEATER PCB

Cellular 50





113

104

MS94V0
519

Cellular Specialties, Inc.

Malcolm 800MHz REPEATER PCB

9730-2101-001 Rev. 1.0

2

3

Left side of the PCB containing various electronic components, including integrated circuits, capacitors, and connectors. It features a large multi-pin connector at the top and a yellow component near the center.

Two smaller PCB modules mounted side-by-side in the middle section of the main board.

Bottom-left section of the PCB, featuring a large multi-pin connector and several integrated circuits.

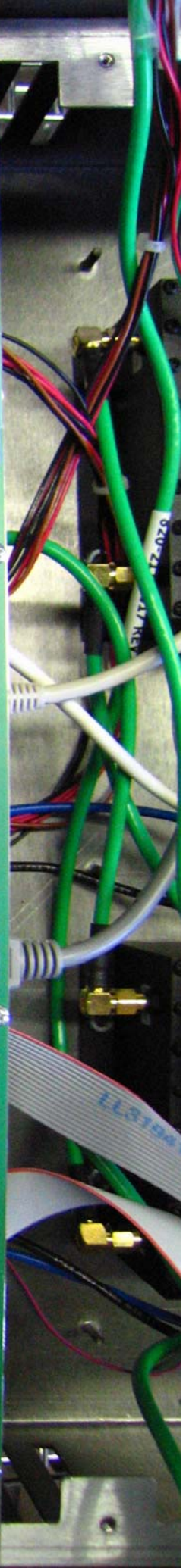
Central section of the PCB, densely packed with various electronic components, including integrated circuits, capacitors, and connectors.

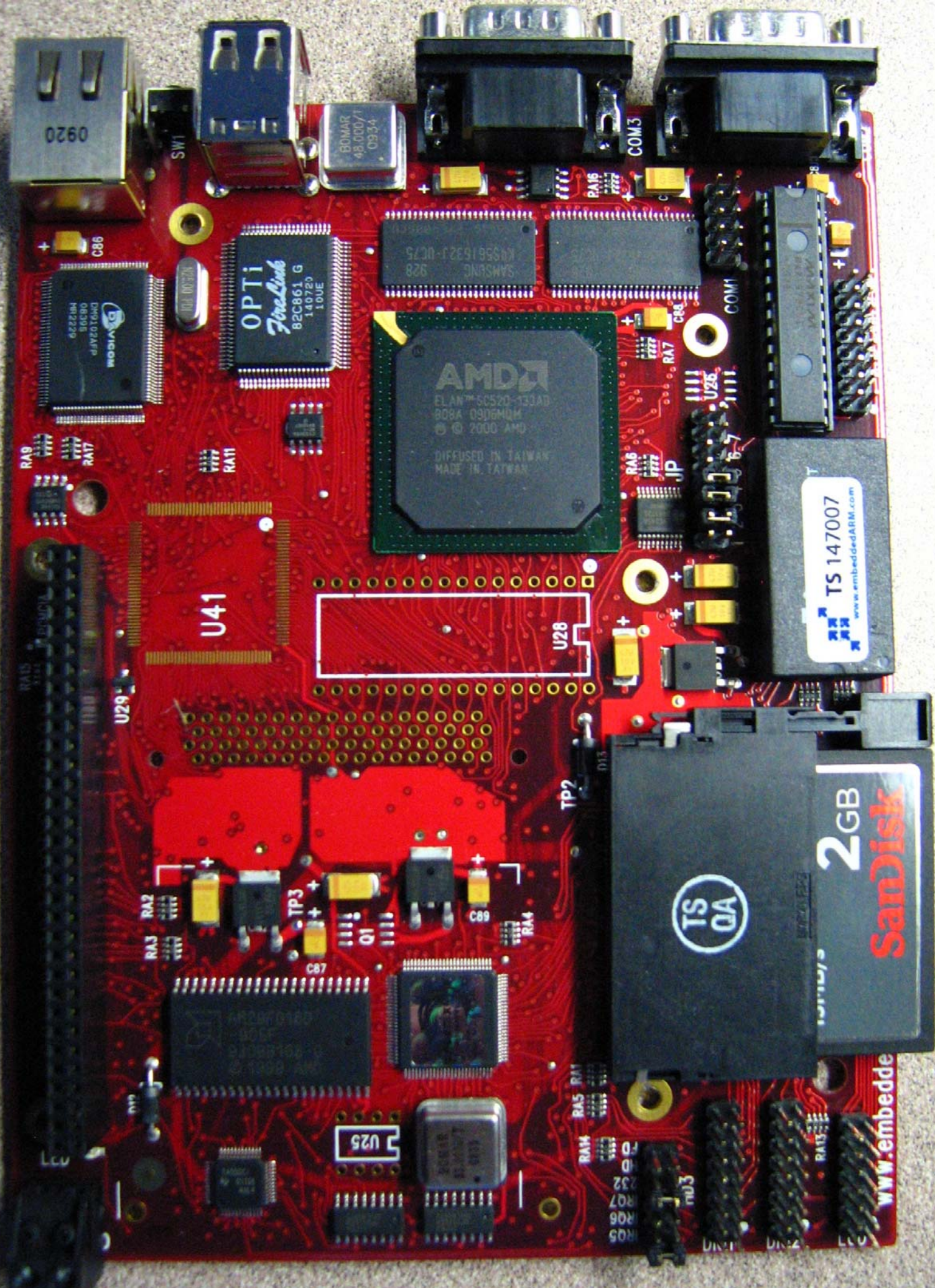
Top-right section of the PCB, containing a large multi-pin connector and several integrated circuits.

Small PCB module mounted in the middle-right section.

Another small PCB module mounted in the middle-right section.

Bottom-right section of the PCB, featuring a large multi-pin connector and several integrated circuits.





AMD
ELAN™ 6C520-133AD
808A 09D6MUM
© © 2000 AMD
DIFFUSED IN TAIWAN
MADE IN TAIWAN

OPTi
FireLink
82C861 G
140720
10UE

ROSA
62228M
56630
dJY20TGM

TS 147007
www.embeddedARM.com

SanDisk
2GB
TS
QA

www.embedded

0920

SW1

80MAR
48.000/1
0934

COM3

COM1

U41

U28

U29

TP2

RA2

TP3

C87

Q1

C89

RAM

RA3

Realtek
RTL8101C

U25

TS
QA

RAM

FD

Q32

RQ7

RQ6

RQ5

mu3

DN1

DN2

RAM

Q33

RQ8

RQ9

LCC

LCC

