

Cellular Specialties, Inc.
Repeater PCB

P/N: R01021200011/1 1240

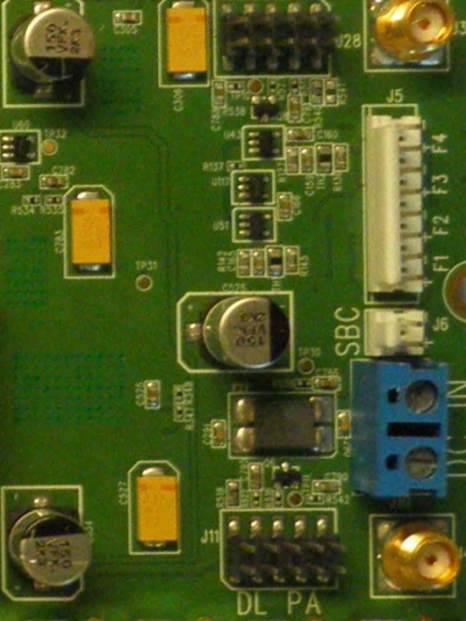
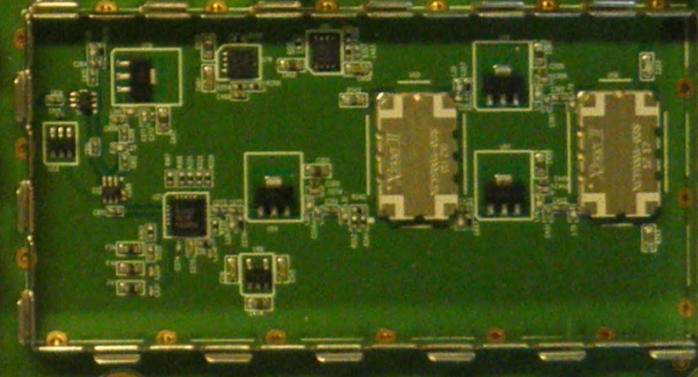
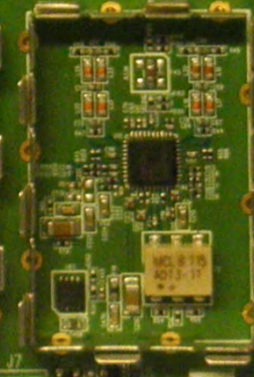
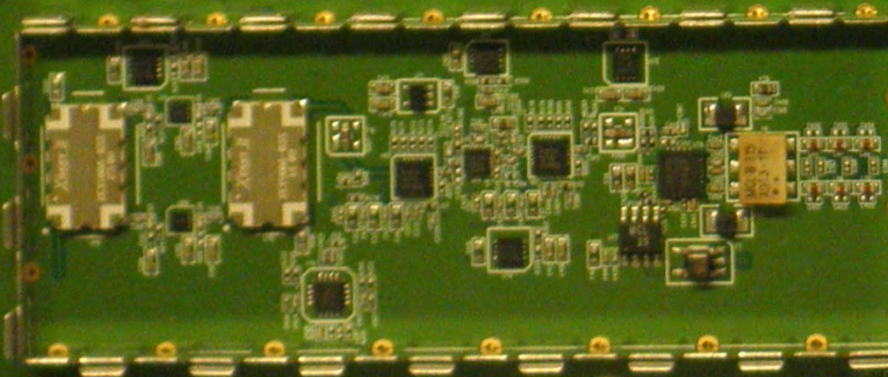
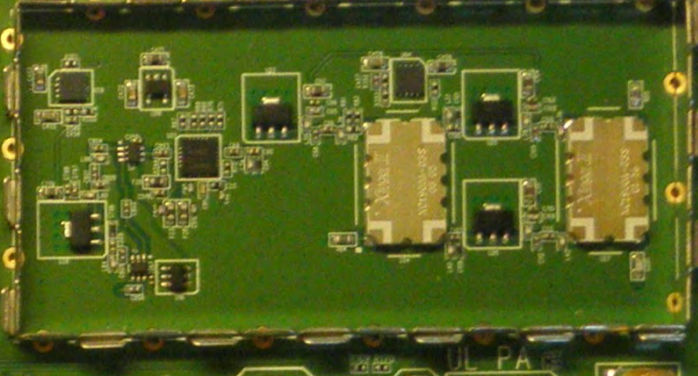
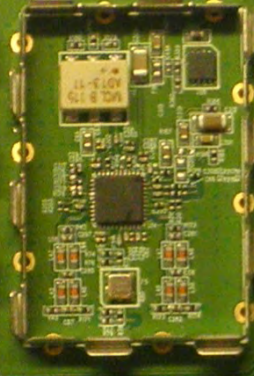
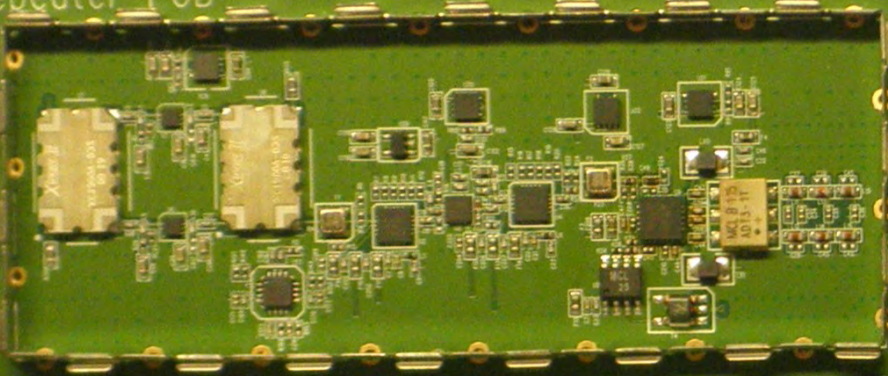
S/N: S/N: 0009

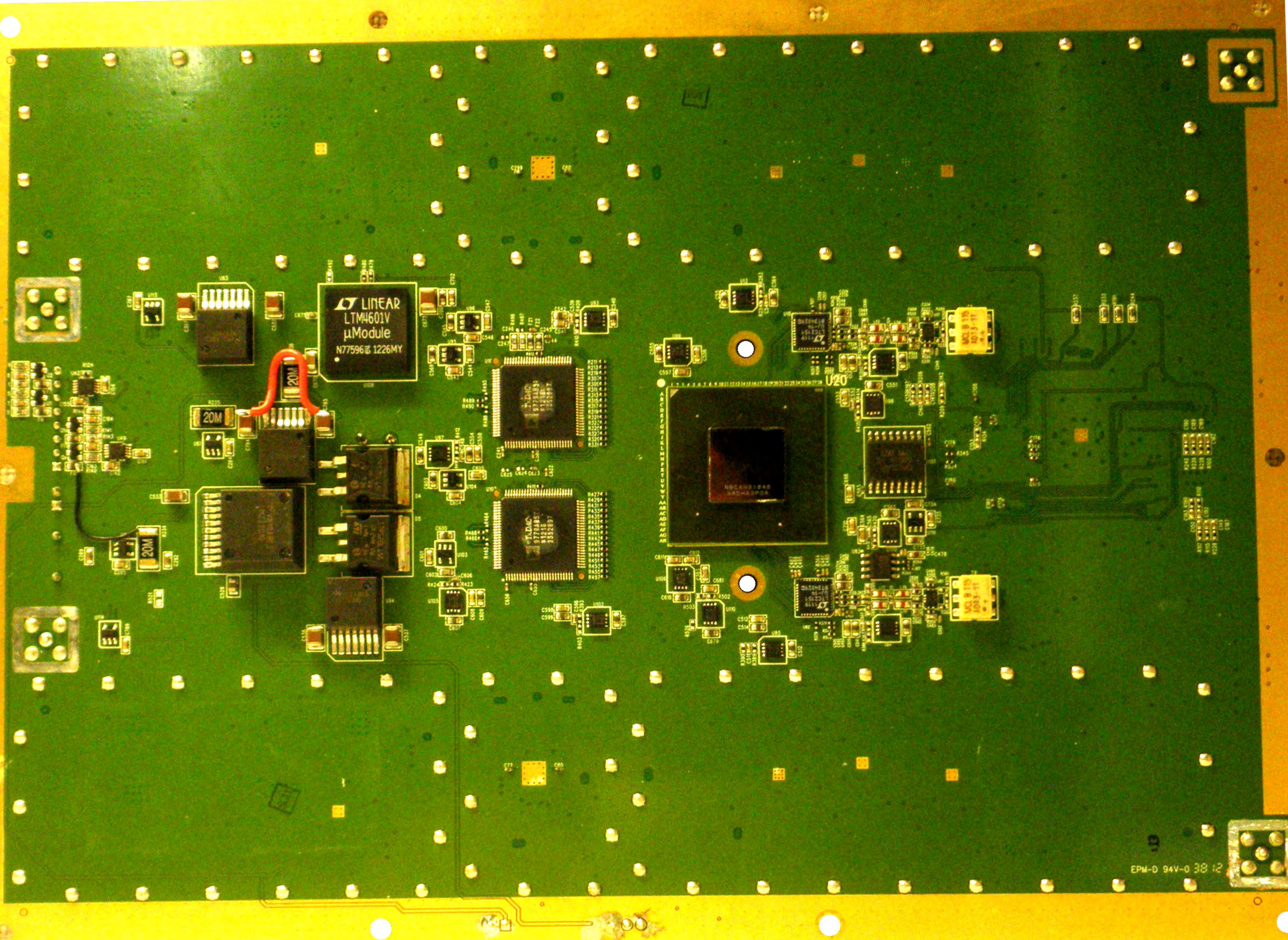
UPLINK

OUTPUT

DC IN

DOWNLINK





LINEAR
LTM4601V
μModule
N77596 1226MY

20M

20M

U20
M32C01000
30SHASPOA

T.D.M.C.
97791857
81210
2332897

T.D.M.C.
97791853
81210
2332897

Cellular Specialties, Inc.

S/N: 0012

R01021210011/1.1 1239

J10

J1

J5

In

SH1

A blue terminal block with two screw terminals is located at the top left. Below it are two gold SMA connectors labeled J1 and J5. The word "In" is printed near J5. At the bottom left, there is a circular hole labeled SH1.

J2

R234

F27

C289

C290

C532

C306

C305

R169

R170

U63

This section contains a multi-pin connector J2, a resistor R234, a fuse F27, two capacitors C289 and C290, a yellow electrolytic capacitor C532, another yellow electrolytic capacitor C306, a capacitor C305, and resistors R169 and R170. A component U63 is also present.

C304

150 VFK 2R1

A circular component, likely a capacitor or filter, with the text "150 VFK 2R1" printed on its top surface. It is labeled C304.

R23

C23

R9

C24

RL13

C30

C29

C28

R7

U4

R10

C25

R12

C22

R22

C32

C7

R2

C8

R3

C4

R5

C3

R19

R20

R21

R17

C103

C101

C1

C102

C100

C98

R119

R18

R16

R15

R14

R13

R12

R11

R10

R9

R8

R7

R6

R5

R4

R3

R2

R1

F1

F2

R28

C11

C10

C9

C8

C7

C6

C5

C4

C3

C2

C1

C0

U2

U3

U4

U5

U6

U7

U8

U9

U10

U11

U12

U13

U14

U15

U16

U17

U18

U19

U20

U21

U22

U23

U24

U25

U26

U27

U28

U29

U30

U31

U32

U33

U34

U35

U36

U37

U38

U39

U40

U41

U42

U43

U44

U45

U46

U47

U48

U49

U50

U51

U52

U53

U54

U55

U56

U57

U58

U59

U60

U61

U62

U63

U64

U65

U66

U67

U68

U69

U70

U71

U72

U73

U74

U75

U76

U77

U78

U79

U80

U81

U82

U83

U84

U85

U86

U87

U88

U89

U90

U91

U92

U93

U94

U95

U96

U97

U98

U99

U100

The central area of the PCB is densely packed with components. It features two large integrated circuits labeled U2 and U3, both marked "Xtremor II". A central component U4 is also present. The board is populated with numerous resistors (R1-R28), capacitors (C1-C32), and other passive components. There are also several circular holes and a blue terminal block on the left side.

J4

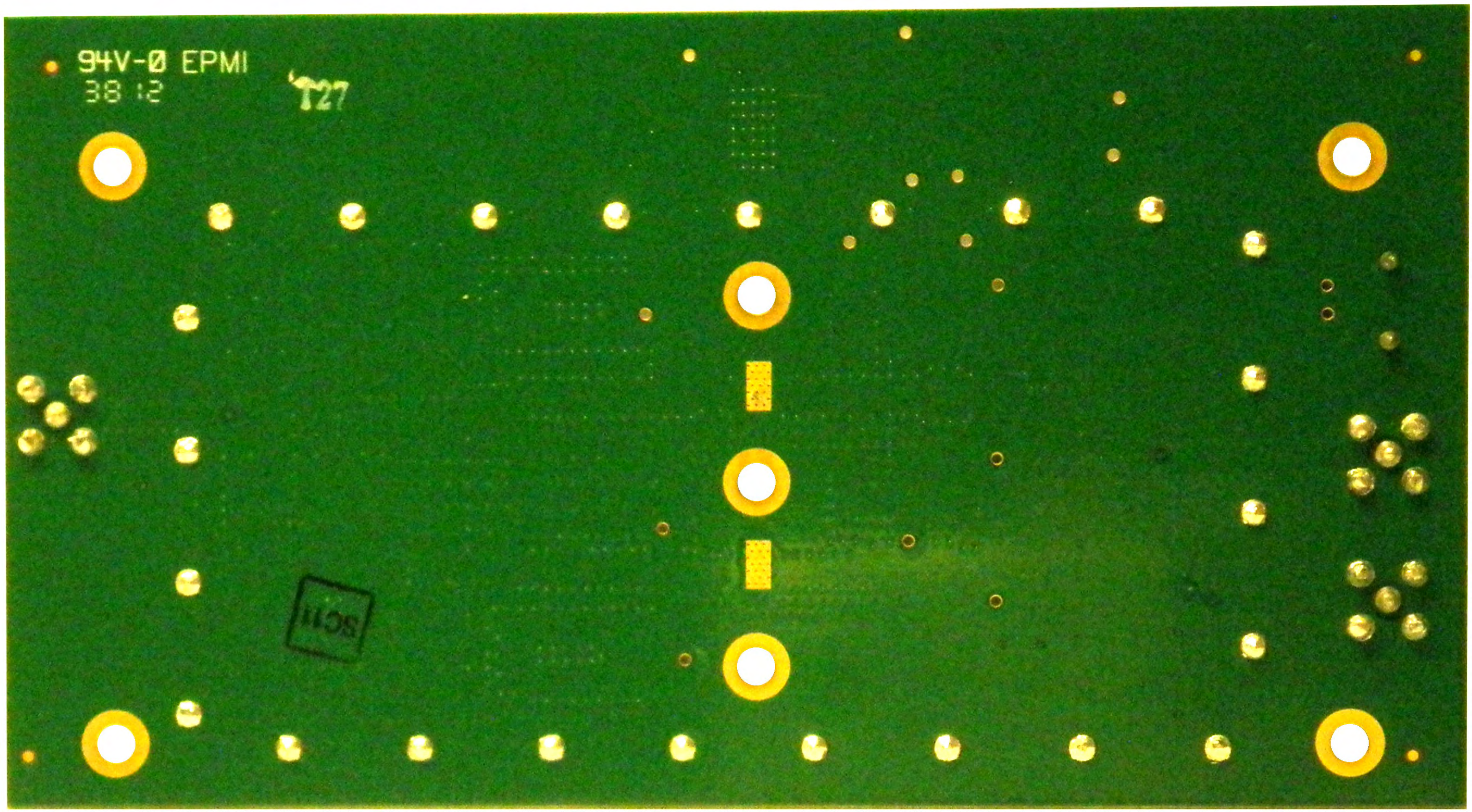
Out

A gold SMA connector labeled J4 is located on the right side of the PCB. The word "Out" is printed below it.

94V-0 EPMI
38 12

T27

SCM



JTAG 6 94V-0 D10 TS-7350

995

1025

CIRUS LOGIC
EP9302-CQZ
EFWAE2GT1030
ARM™
TAIWAN
SN 162715

3.3V
1.8V
5V

V82-A5
5V

SAMSUNG 943 K4S511632D-UC75
SAMSUNG 943 K4S511632D-UC75

bq3287EAMT
1042
0AZ013W

Lattice
LFXP2-5E
50N2080
A948RH09

COM 1
3V
COM 1

Rev B

www.embeddedARM.com

D1

U10

R28

R97

U10

R21 R80

U11

R56

U25

R99

U13

R42

R49

R22

R41

R40

R55

R44

C94

R98

U7

C99

U2

SS268

F10

Pf1

U4

RN7

U21

U9

RN2 R15

C97

U4

U21

U9

RN5

R39

R43

R38

U22

R37

R32

R26

C22

F84

F92

K32

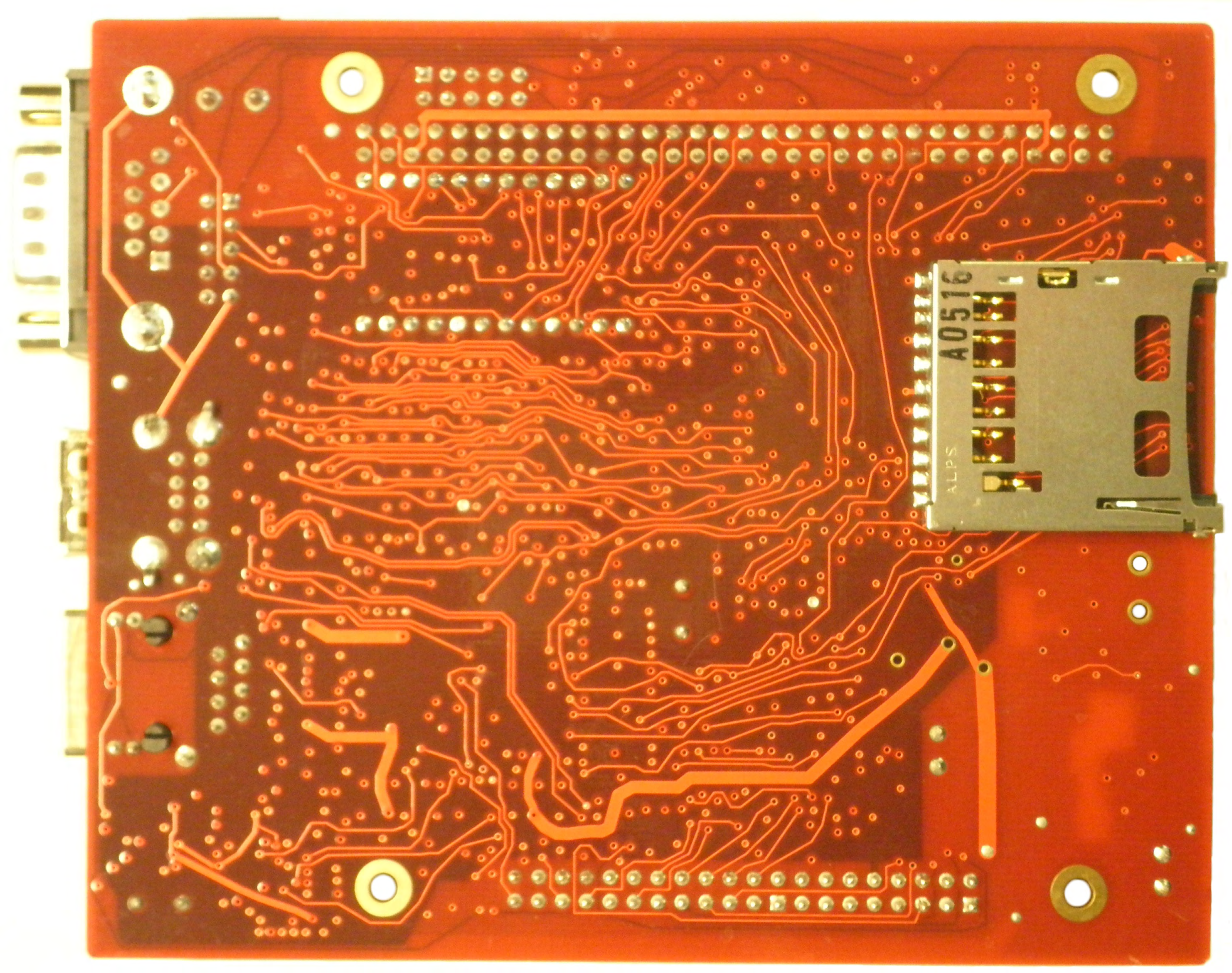
R45

601M305.00M01

KS287218L

1041A40

MICREL



R730-2085-00 Rev A



LT LINEAR
LT1529
CQ-33
9060651

220
01K
845

0809 95181

QUALCOMM
NO
PRODUCT OF CHINA
IC: 2417C - MCT750
FCC ID: N7NMCT750
VZW
10
1101341
CA1182058010
IMEI # 990000560293401
21
MCT750
SIERRA WIRELESS
AirPrime™
MAIN GPS AUX

P/N: 010-2085-00 REV A

S/N:

J1

J3

J2

J8

J4

P/N:

S/N:

