



P/N: 010-2084-001  
Rev 6.2

S/N: 07004507

MP10C836F2

UPLINK

DOWNLINK

Cellular Specialties, Inc.

DSP II 800MHz REPEATER PCB

P/N: 010-2085-001  
Rev 4.7

S/N: 07085493

MP10C881F2

UPLINK

DOWNLINK

010-2074-001 Rev 4.2

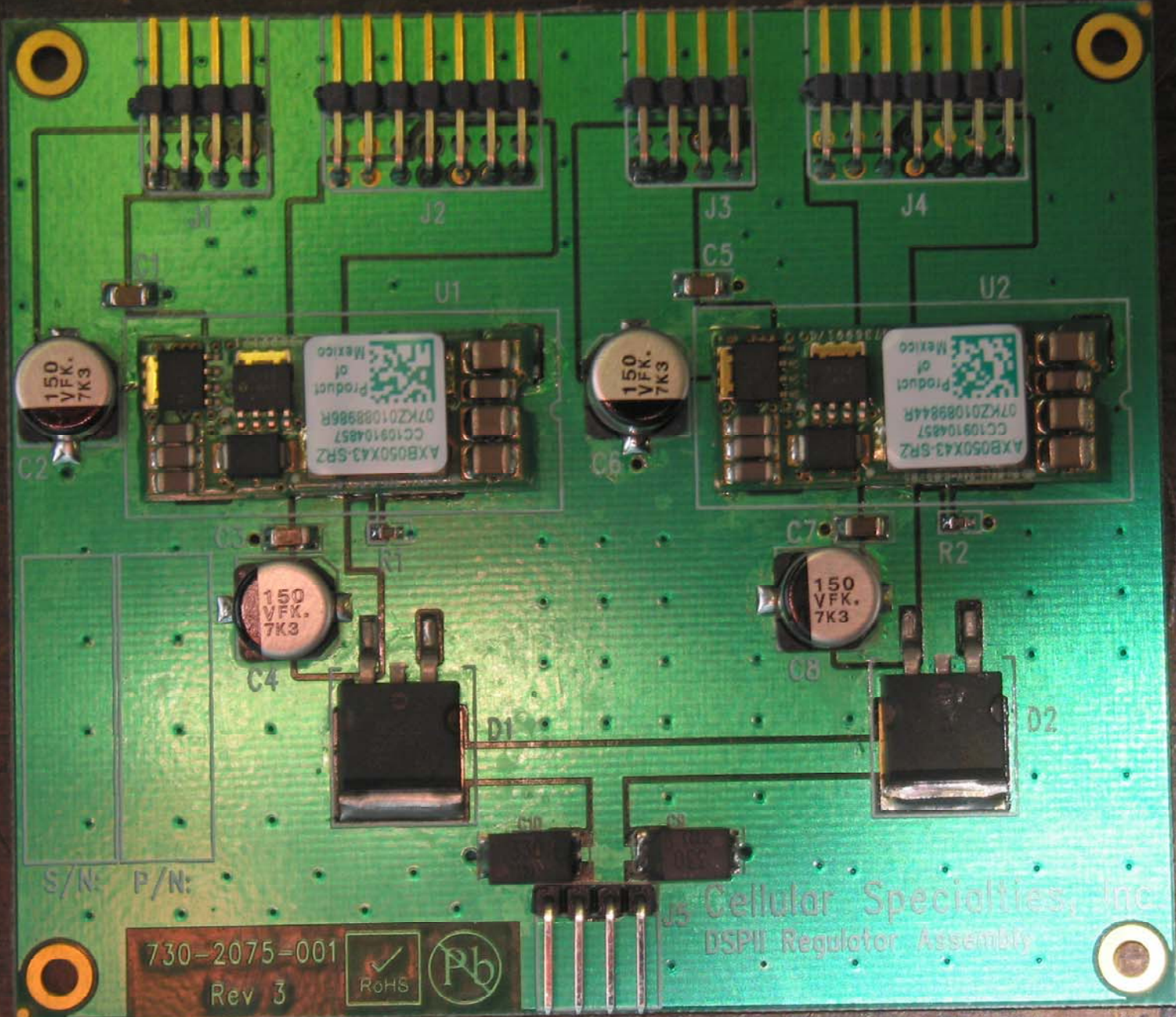




M-b 36-07  
94V-0

ET





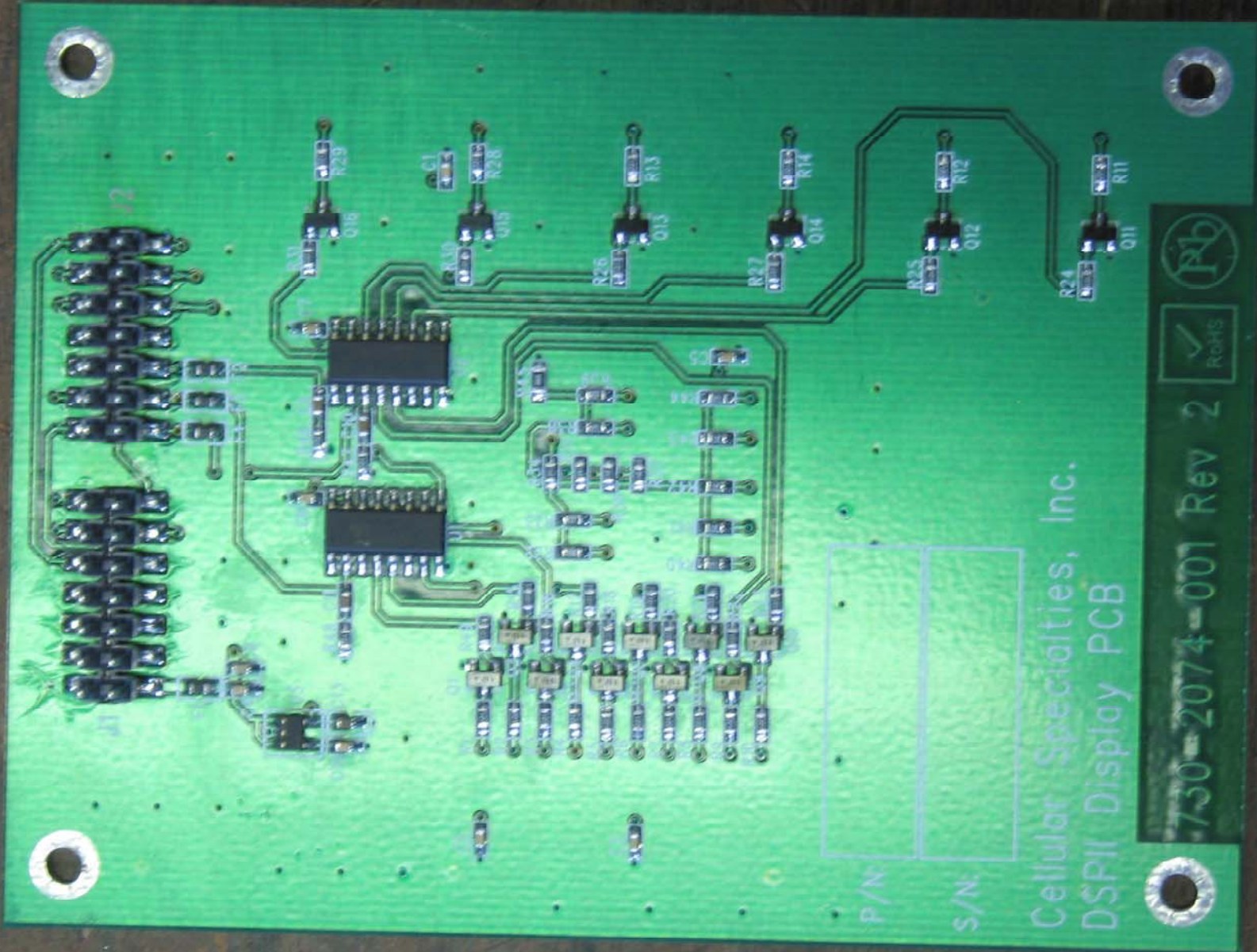
S/N: P/N:

730-2075-001  
Rev 3



Cellular Specialties, Inc  
DSPII Regulator Assembly





P/N:

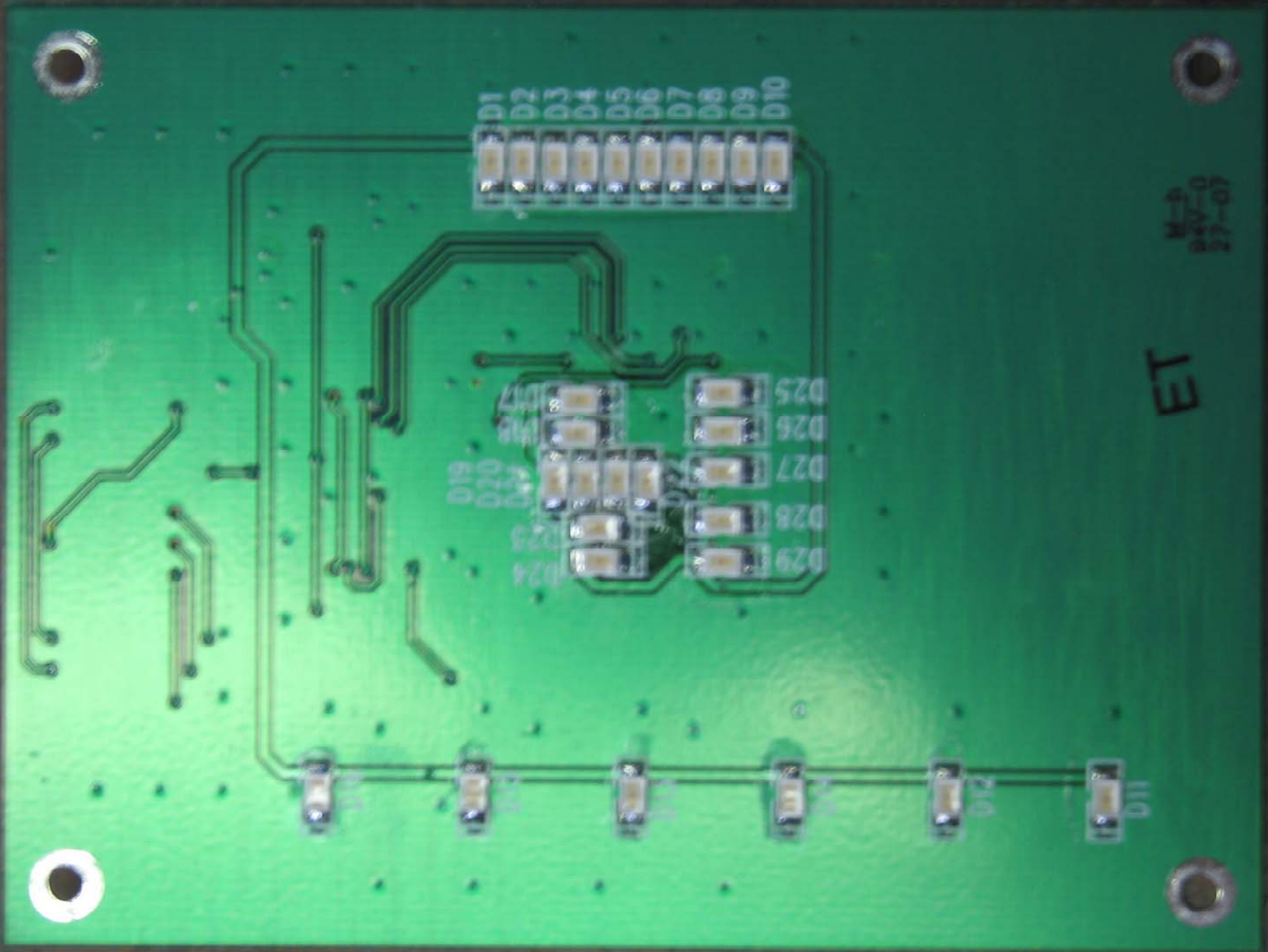
S/N:

Cellular Specialties, Inc.  
DSPII Display PCB

730-2074-001 Rev 2







D1  
D2  
D3  
D4  
D5  
D6  
D7  
D8  
D9  
D10

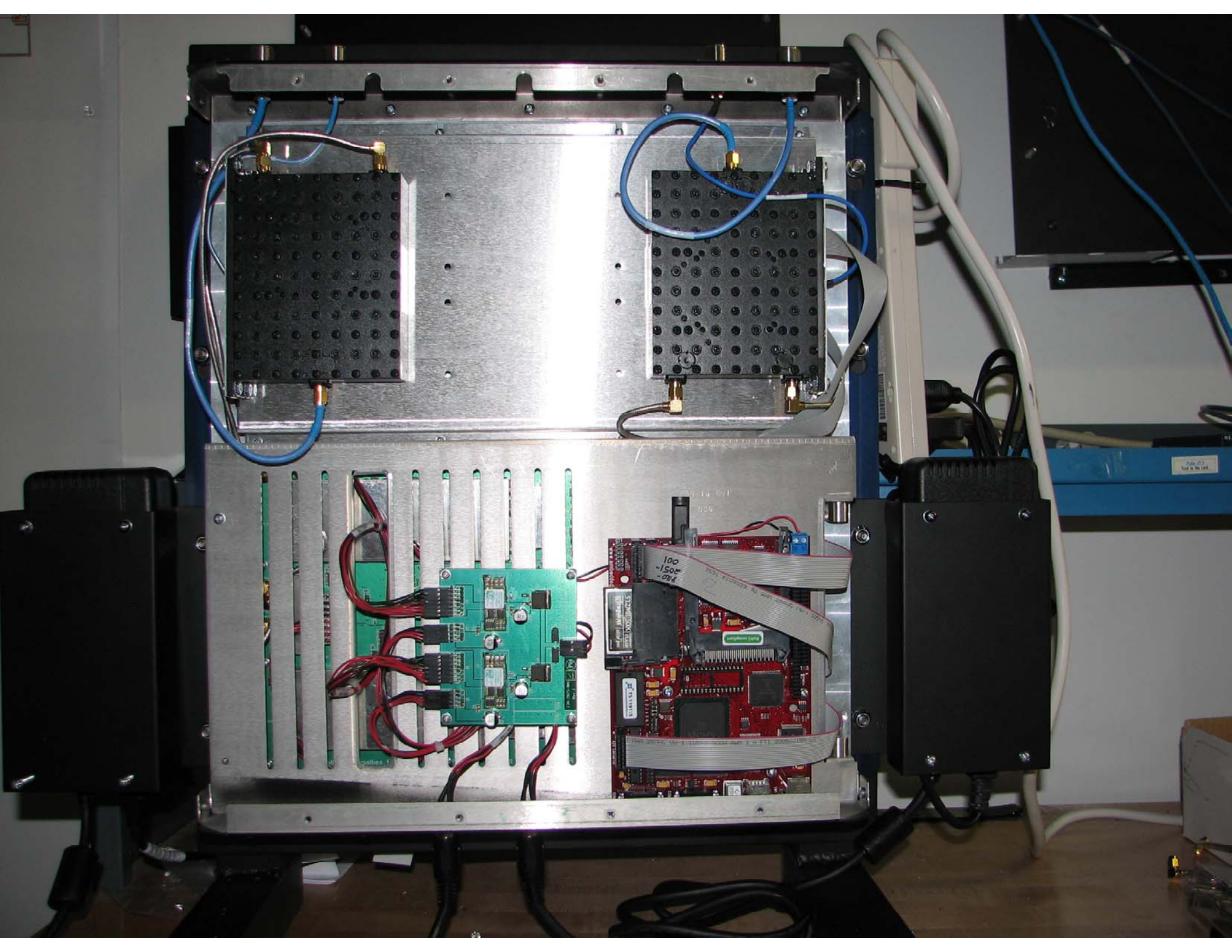
D25  
D26  
D27  
D28  
D29  
D24  
D23  
D22  
D21  
D20  
D19  
D18  
D17

D10  
D11  
D12  
D13  
D14  
D15  
D16  
D17  
D18  
D19

ET

M-9  
94V-0  
27-01







Cellular Specialties, Inc. DSP I REPEATER PCB 730-2071-001 Rev 6.2

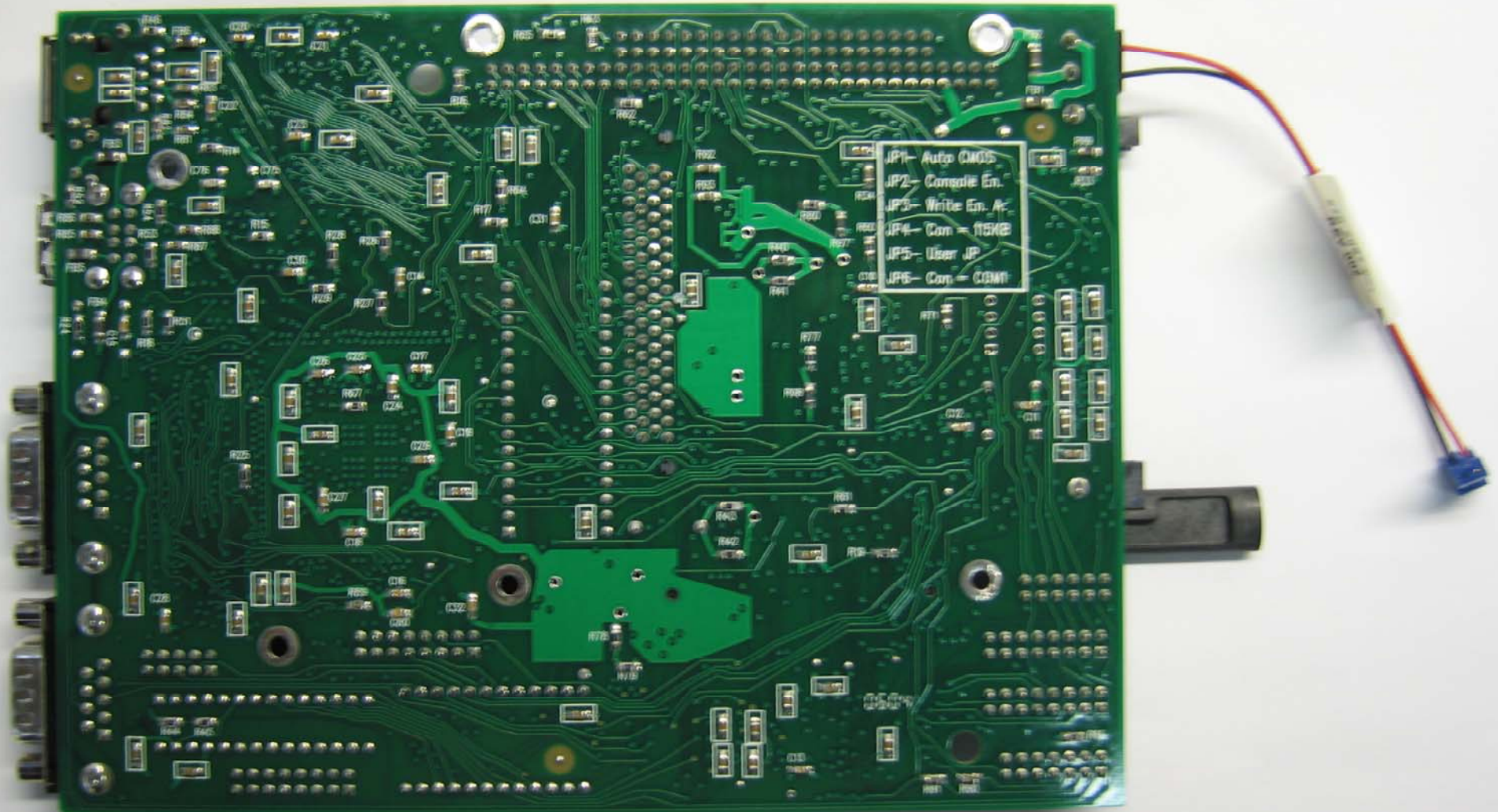
P/N: 010-2085-001 S/N: 07095398

The main DSP I Repeater PCB assembly is a green printed circuit board populated with numerous components. It features several integrated circuits, including a central DSP chip. A prominent component is a memory module labeled 'MP10C1880F60CC'. The board is densely packed with surface-mount components, including capacitors, resistors, and connectors. A multi-colored ribbon cable (red, black, and white) is connected to a connector on the left side. The board is secured with several screws along its perimeter.

Cellular Specialties, Inc. DSP II 2GHz REPEATER PCB

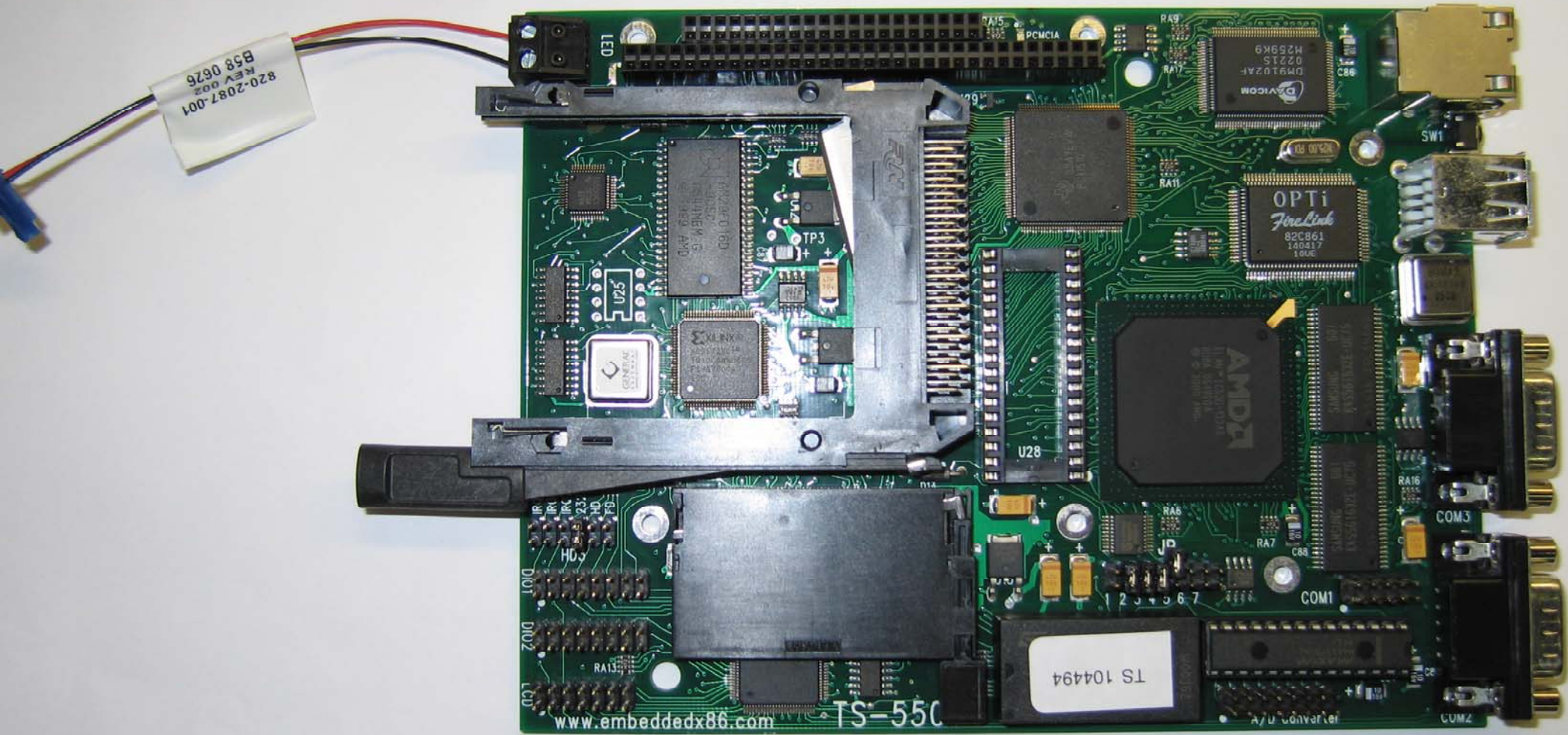






JP1- Auto CMOS  
JP2- Console En.  
JP3- Write En. A.  
JP4- Com = 115KB  
JP5- User JP  
JP6- Com = COM1



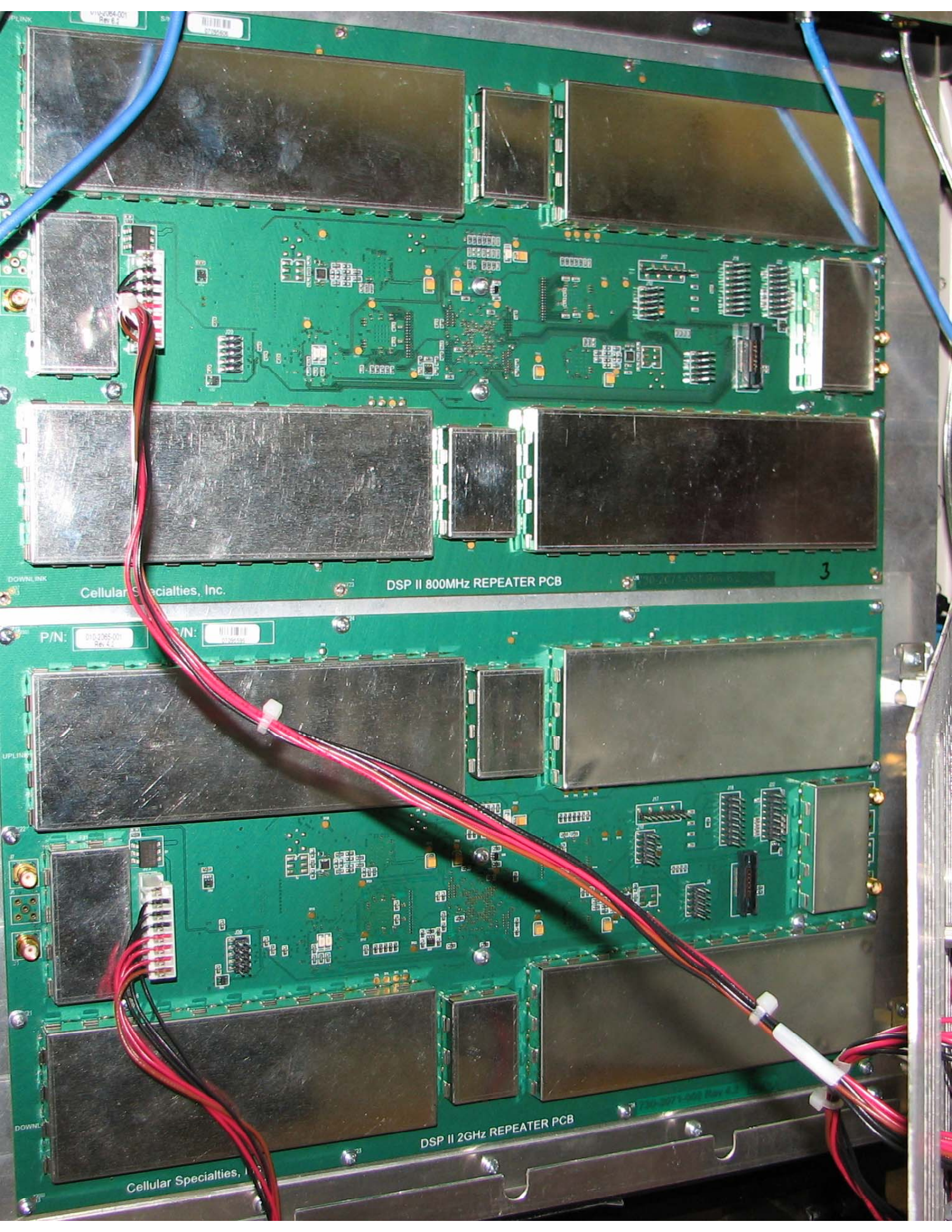


820-2087-001  
REV 002  
B58 0626

TS 104494

www.embeddedx86.com 055-S1





Cellular Specialties, Inc.

DSP II 800MHz REPEATER PCB

3

P/N: 016-2085-001 Rev. 4.0

P/N: 016-2085-001 Rev. 4.0

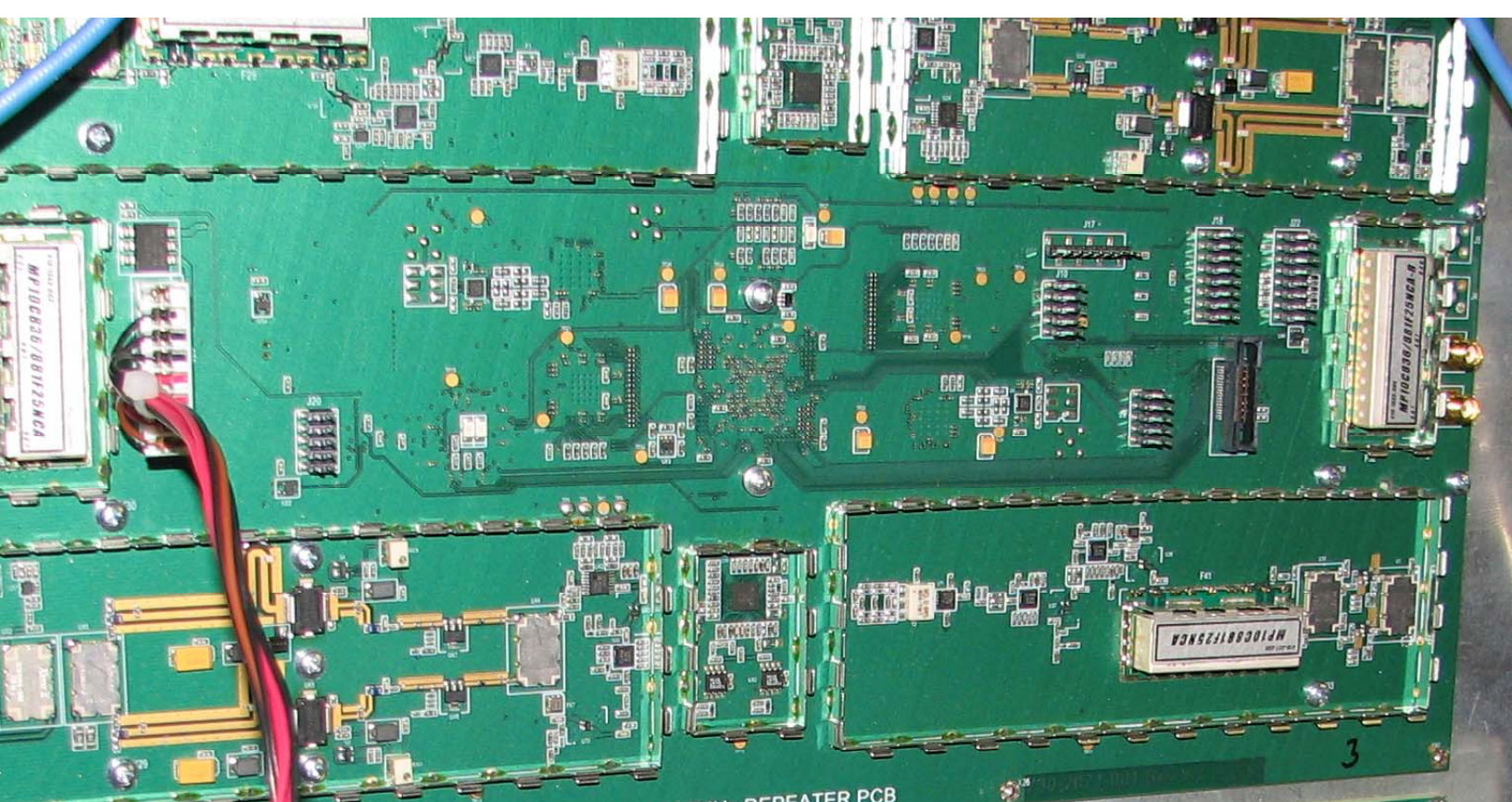
UPLINK

DOWNLINK

DSP II 2GHz REPEATER PCB

Cellular Specialties, Inc.

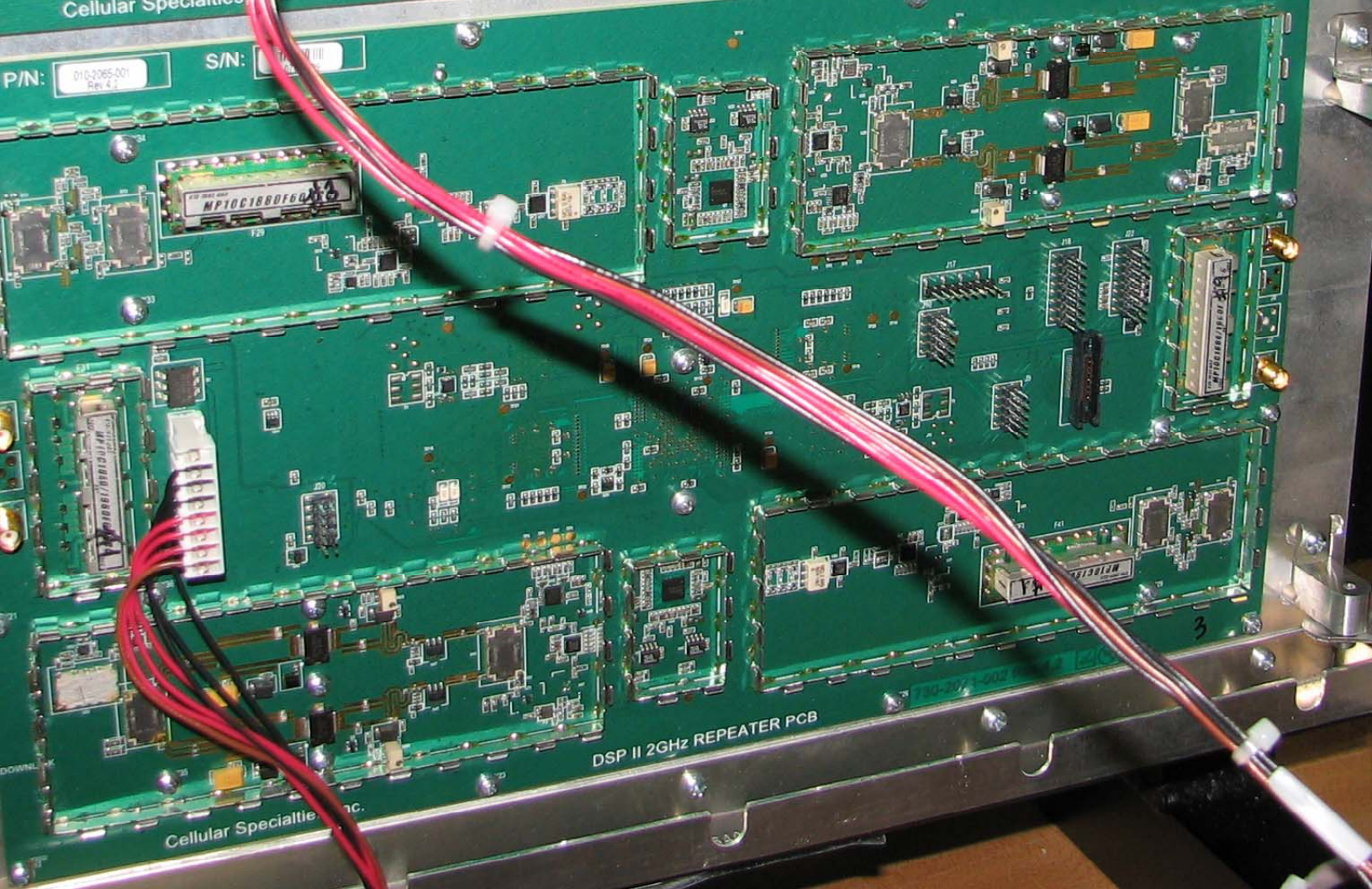




DSP II 800MHz REPEATER PCB

Cellular Specialties

P/N: 0102065-001 S/N: [ ]



DSP II 2GHz REPEATER PCB

Cellular Specialties