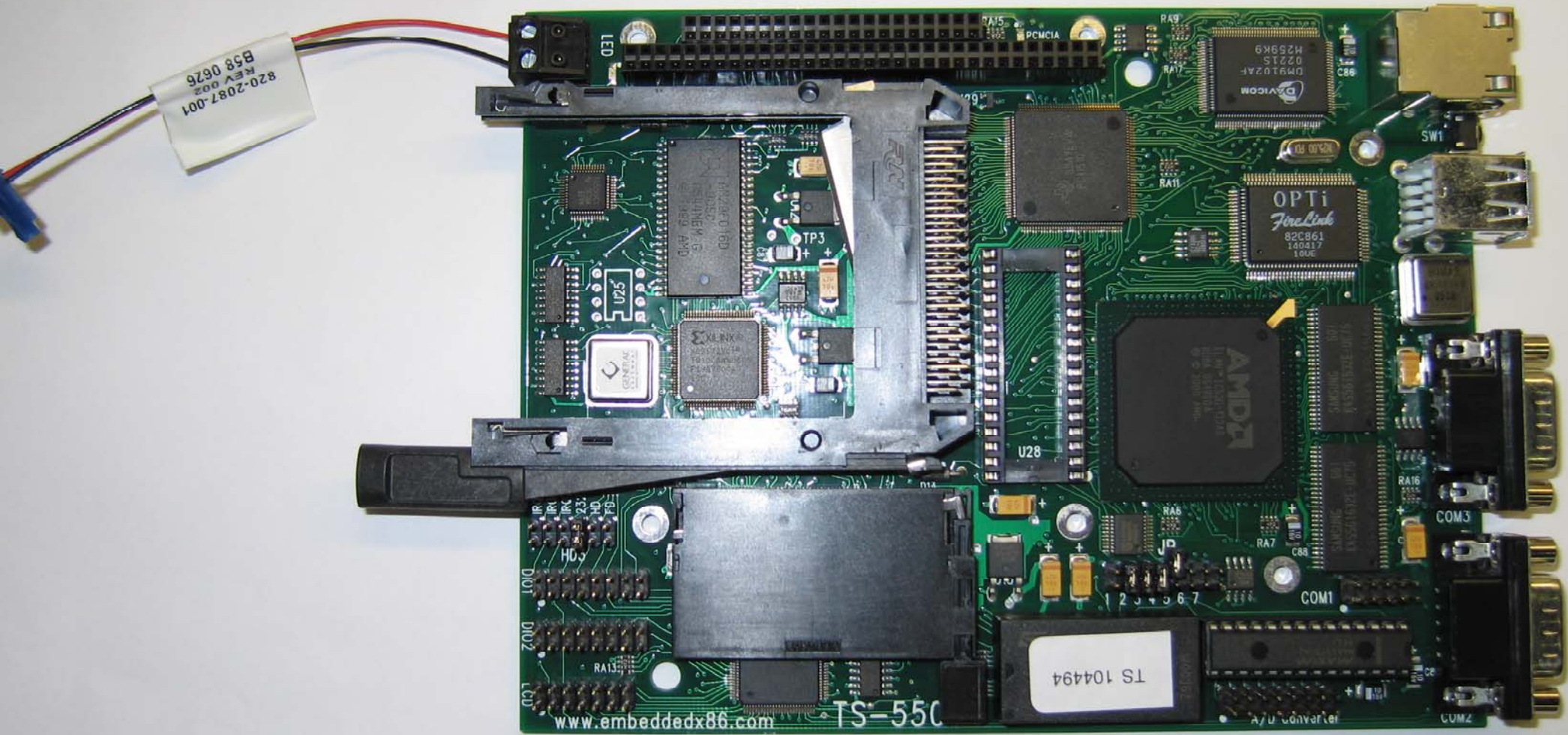


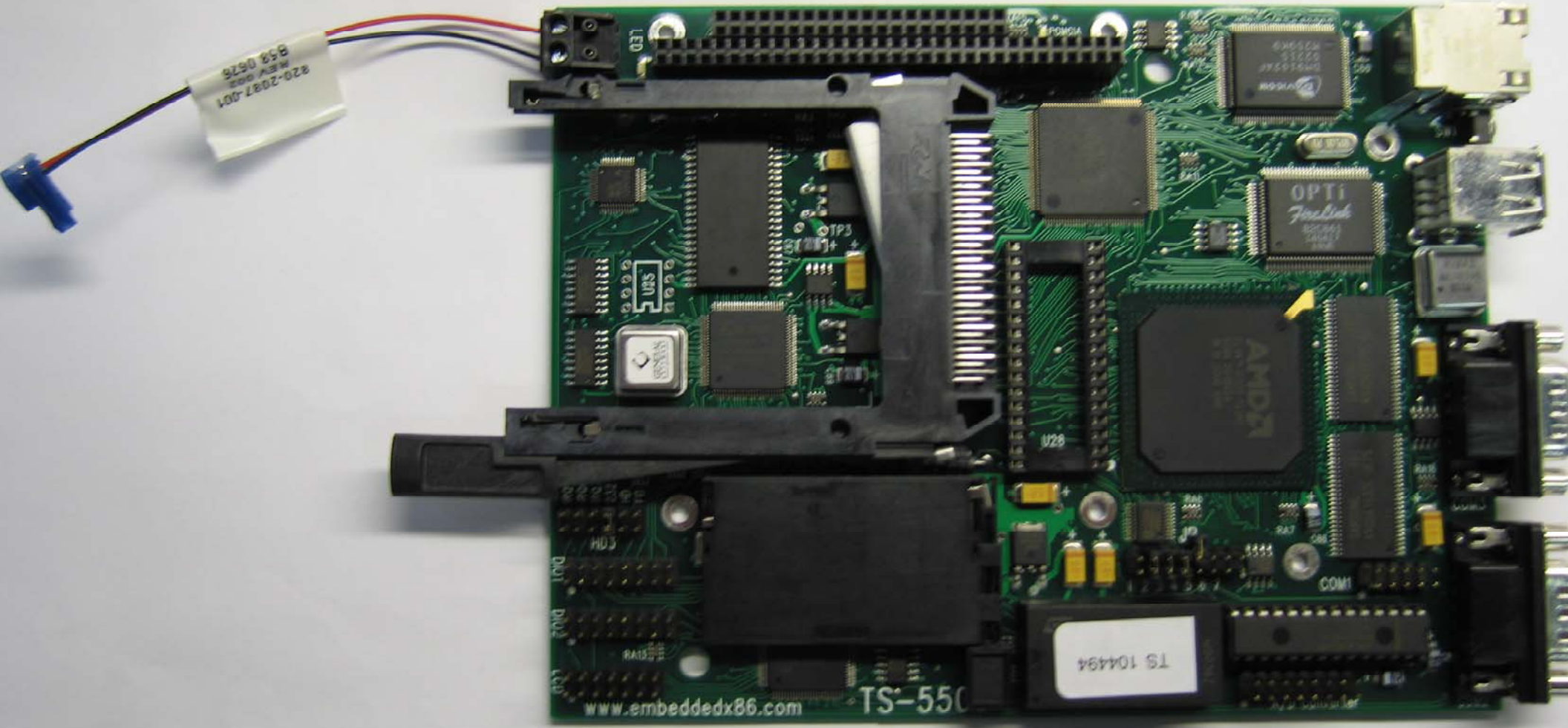
JP1- Auto CMOS  
JP2- Console En.  
JP3- Write En. A.  
JP4- Com = 115KB  
JP5- User JP  
JP6- Com = COM1



820-2087-001  
REV 002  
B58 0626

TS 104494

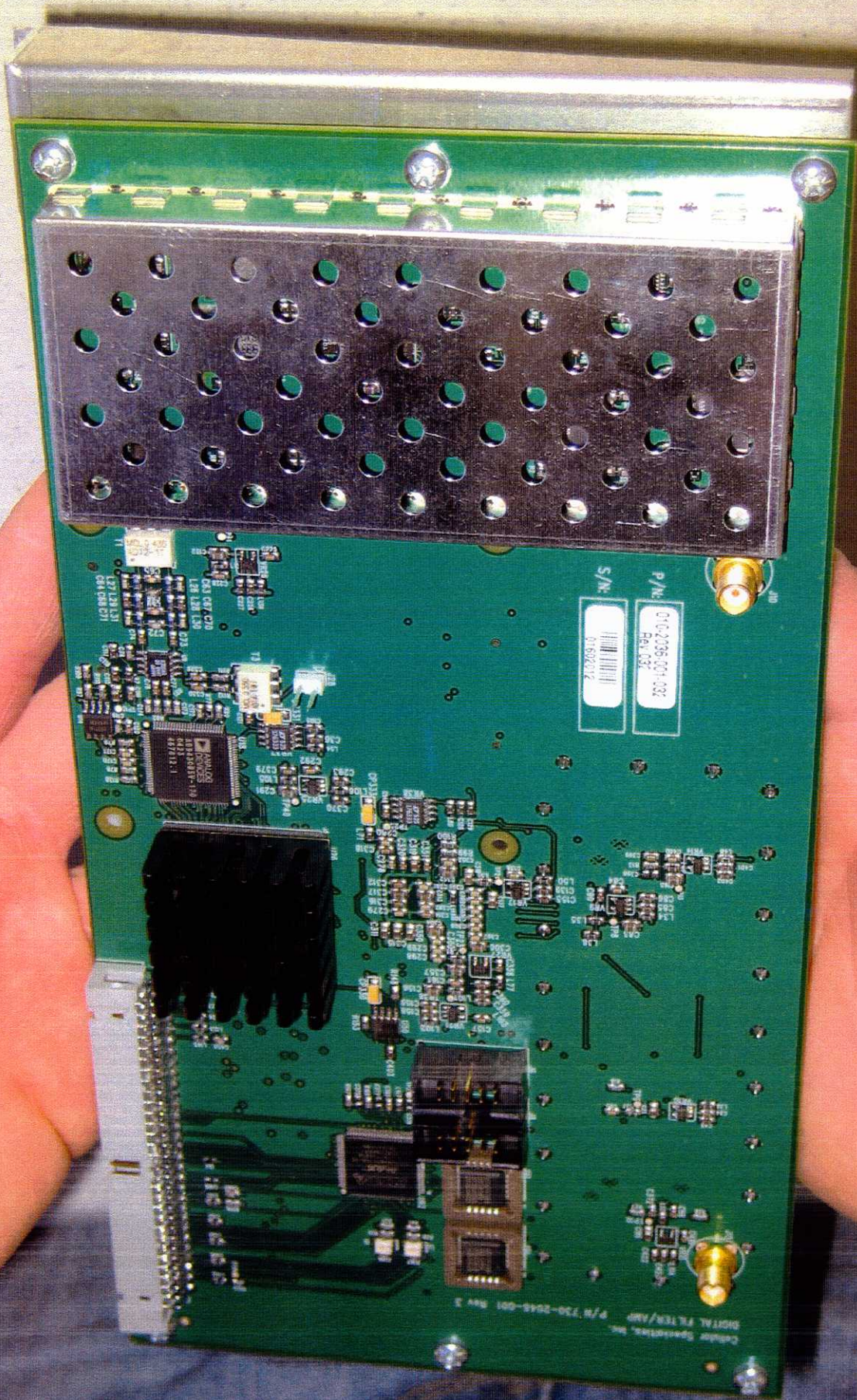
www.embeddedx86.com 055-S1



829-2087-001  
REV 002  
959 0676

TS 104494

www.embeddedx86.com TS-550

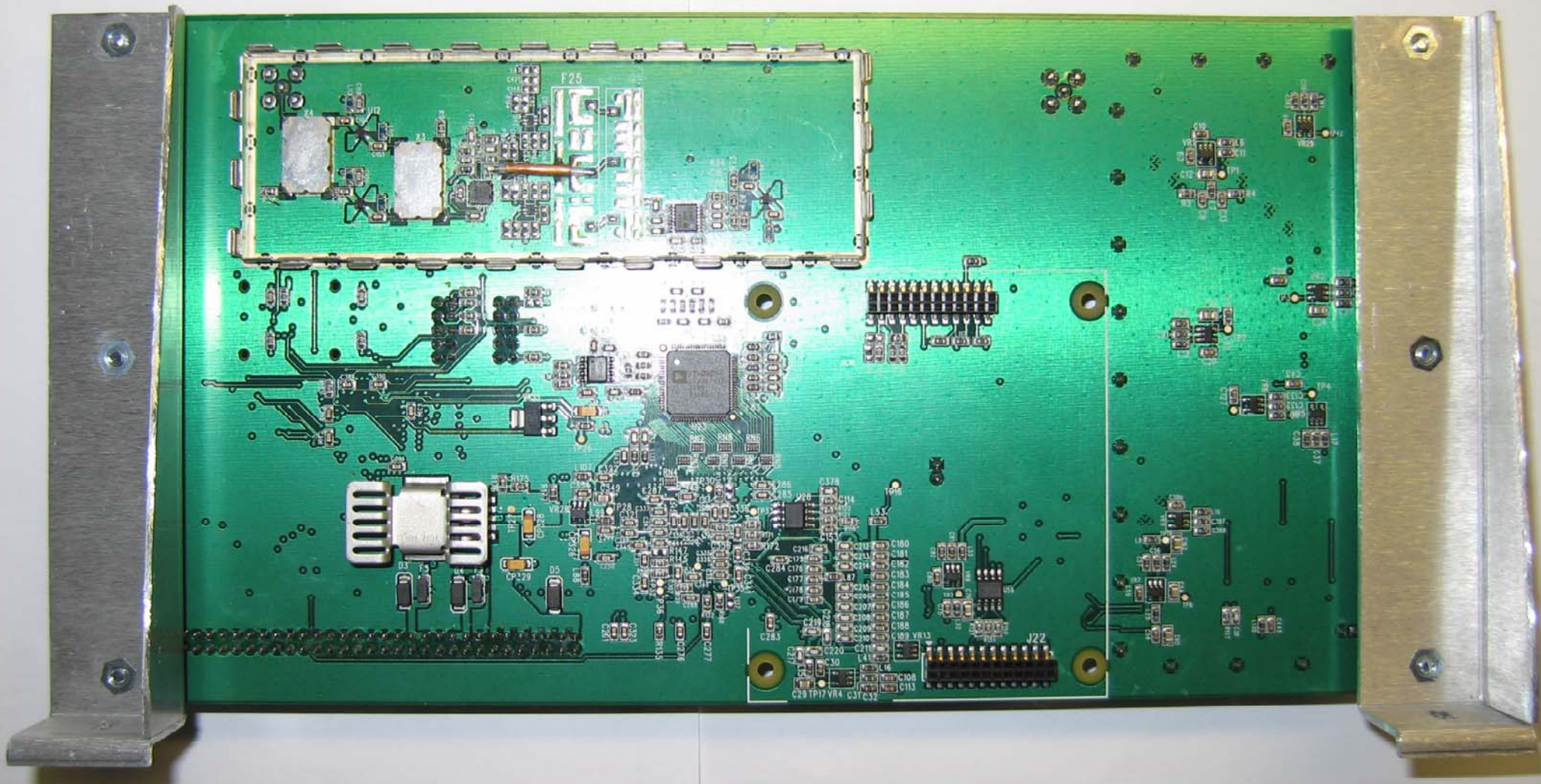


P/N: 010-2386-001-002  
Rev: 001  
S/N: 01502012

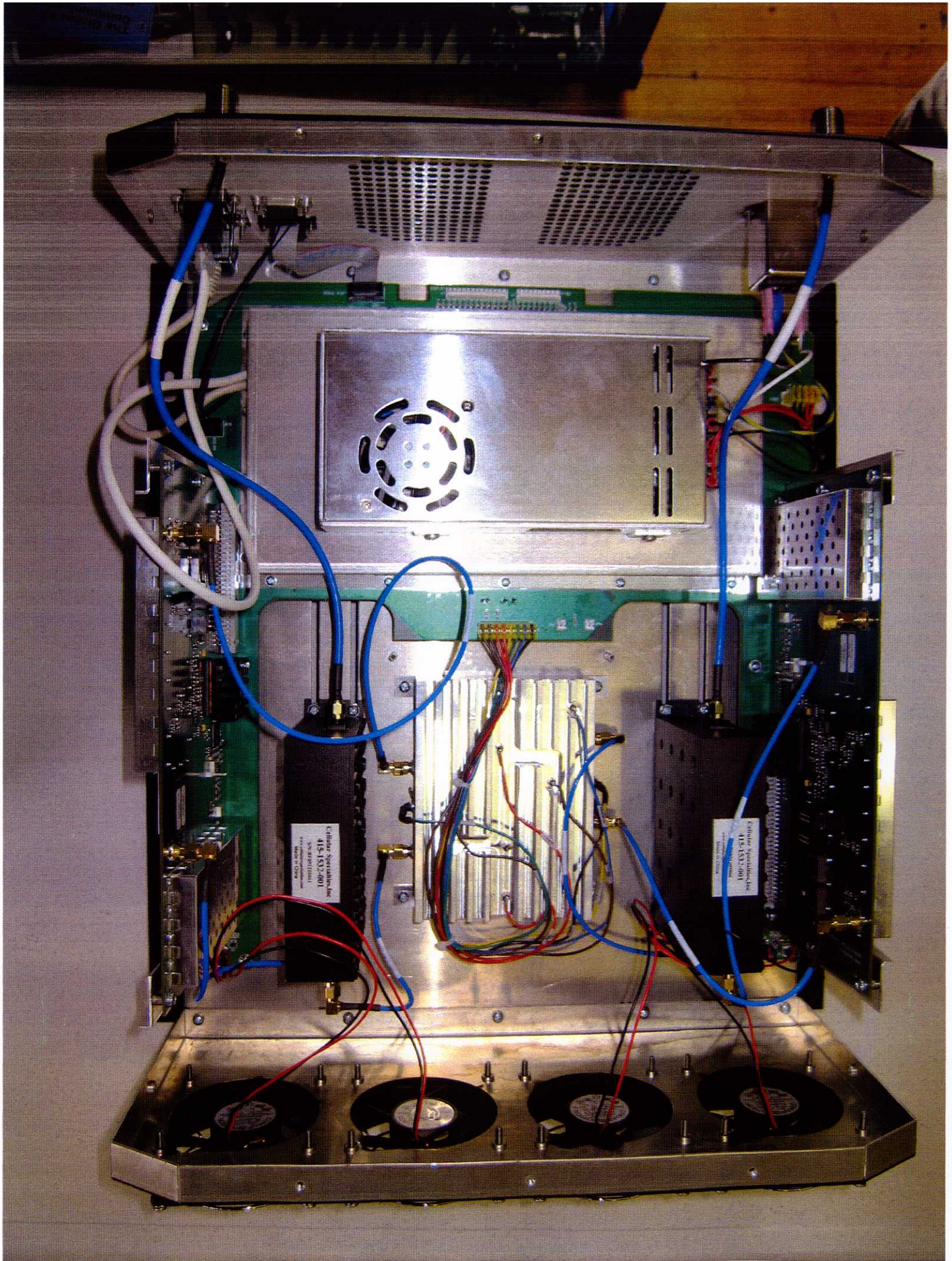
108 1.00 1.00  
081 081 071  
027 1.28 1.31  
081 081 071

PARADES  
8181481811-10  
487112.1

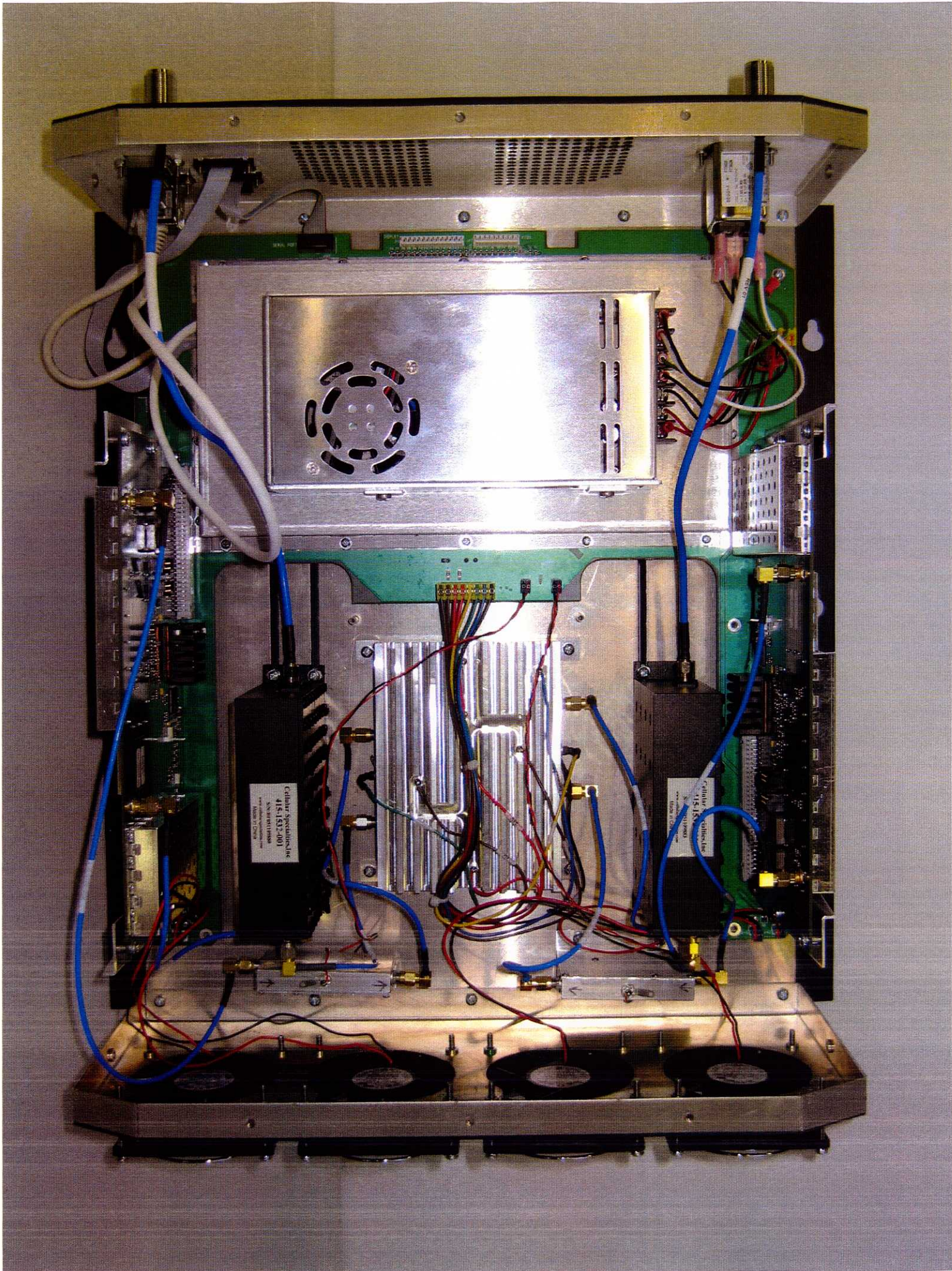
DIGITAL FILTER/AMP P/N 730-2048-001 Rev 2  
Cindler Speakers, Inc.

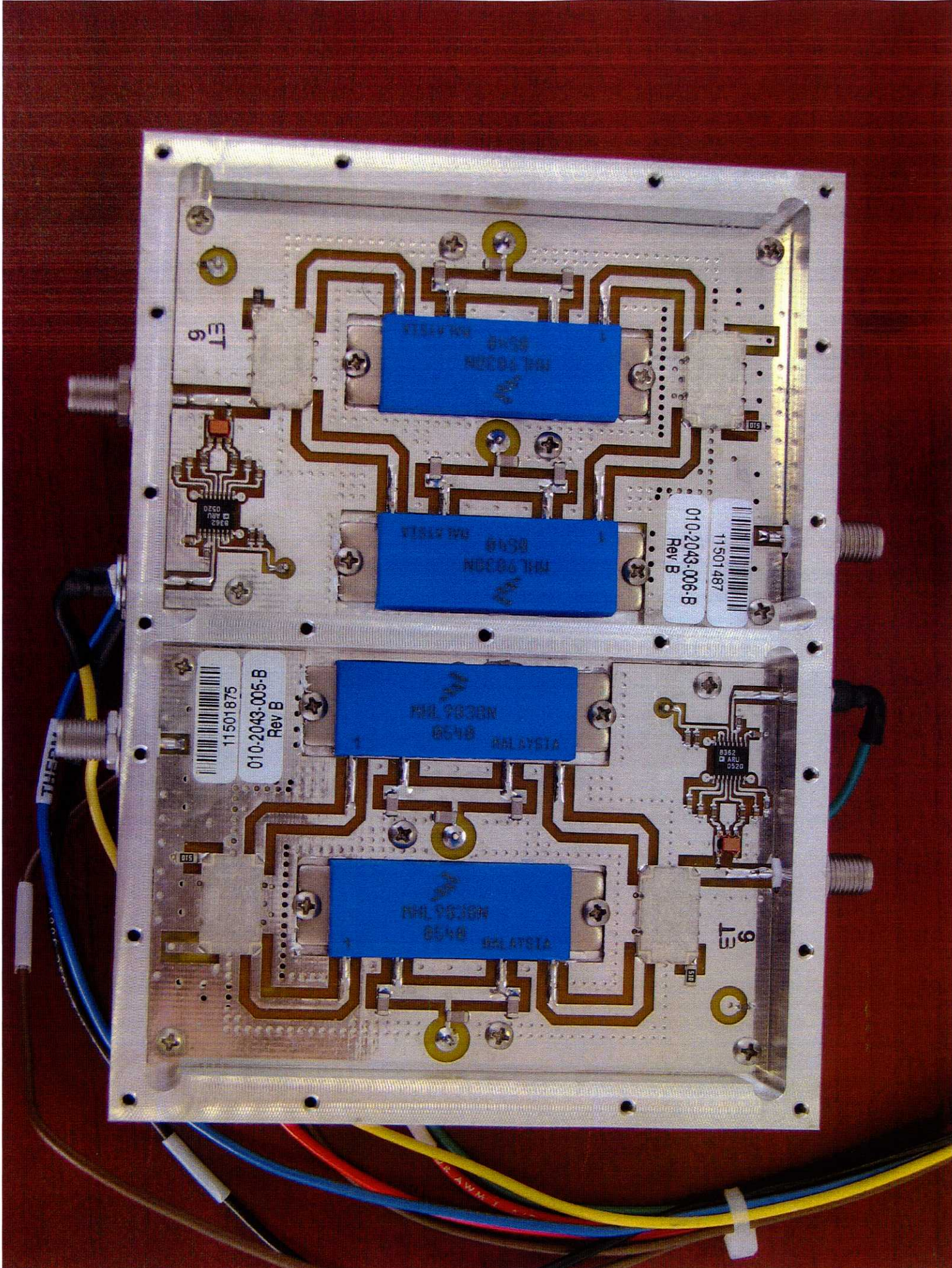












ET 6

010-2043-006-B  
Rev B  
11501487

010-2043-005-B  
Rev B  
11501875

9 L3

THERM

PHL 9830N  
6548  
MALAYSIA

PHL 9830N  
6548  
MALAYSIA

PHL 9830N  
6548  
MALAYSIA

PHL 9830N  
6548  
MALAYSIA