

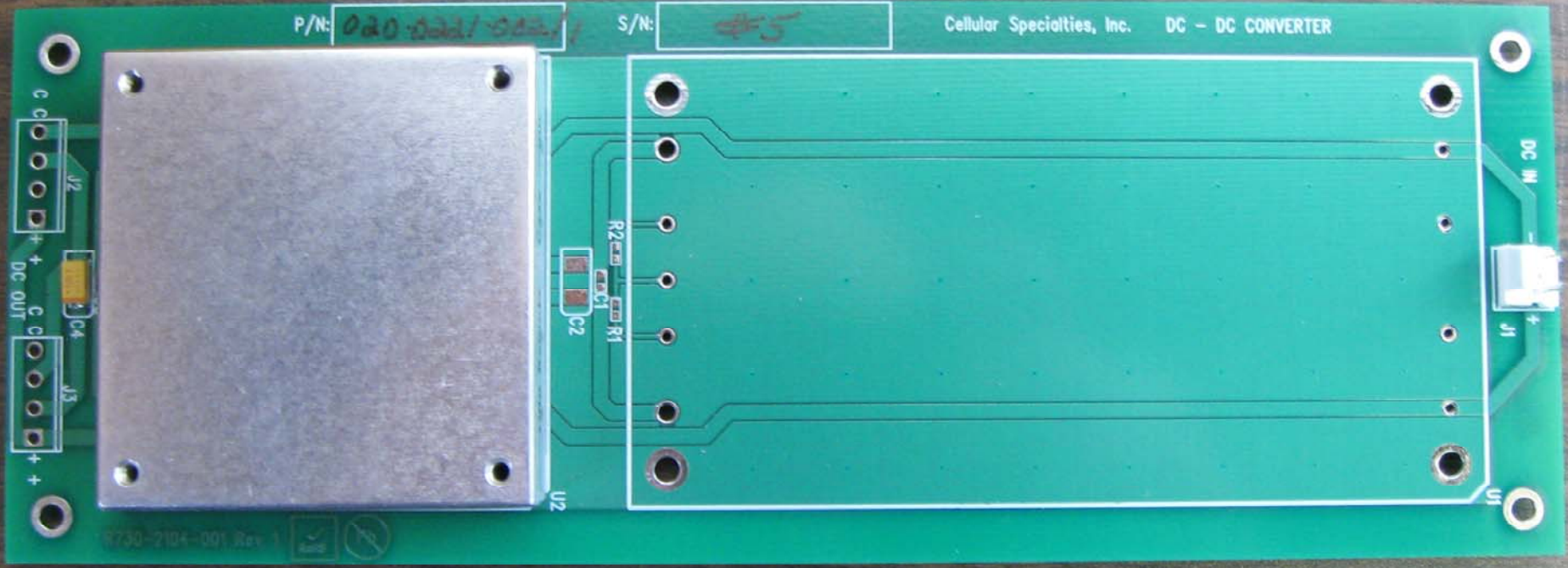




P/N: 020-0221-0221

S/N: #5

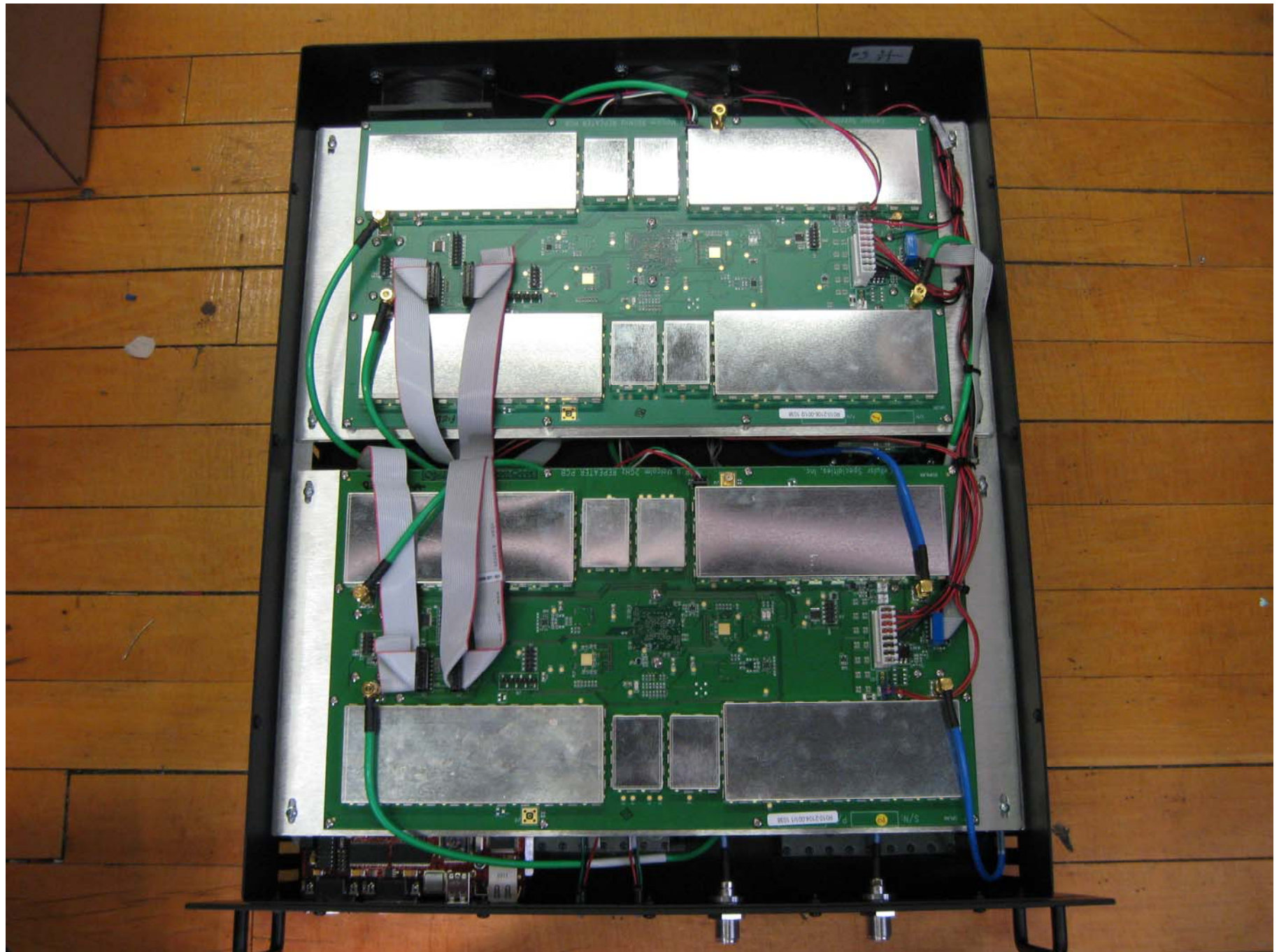
Cellular Specialties, Inc. DC - DC CONVERTER



6730-2104-001 Rev. 1



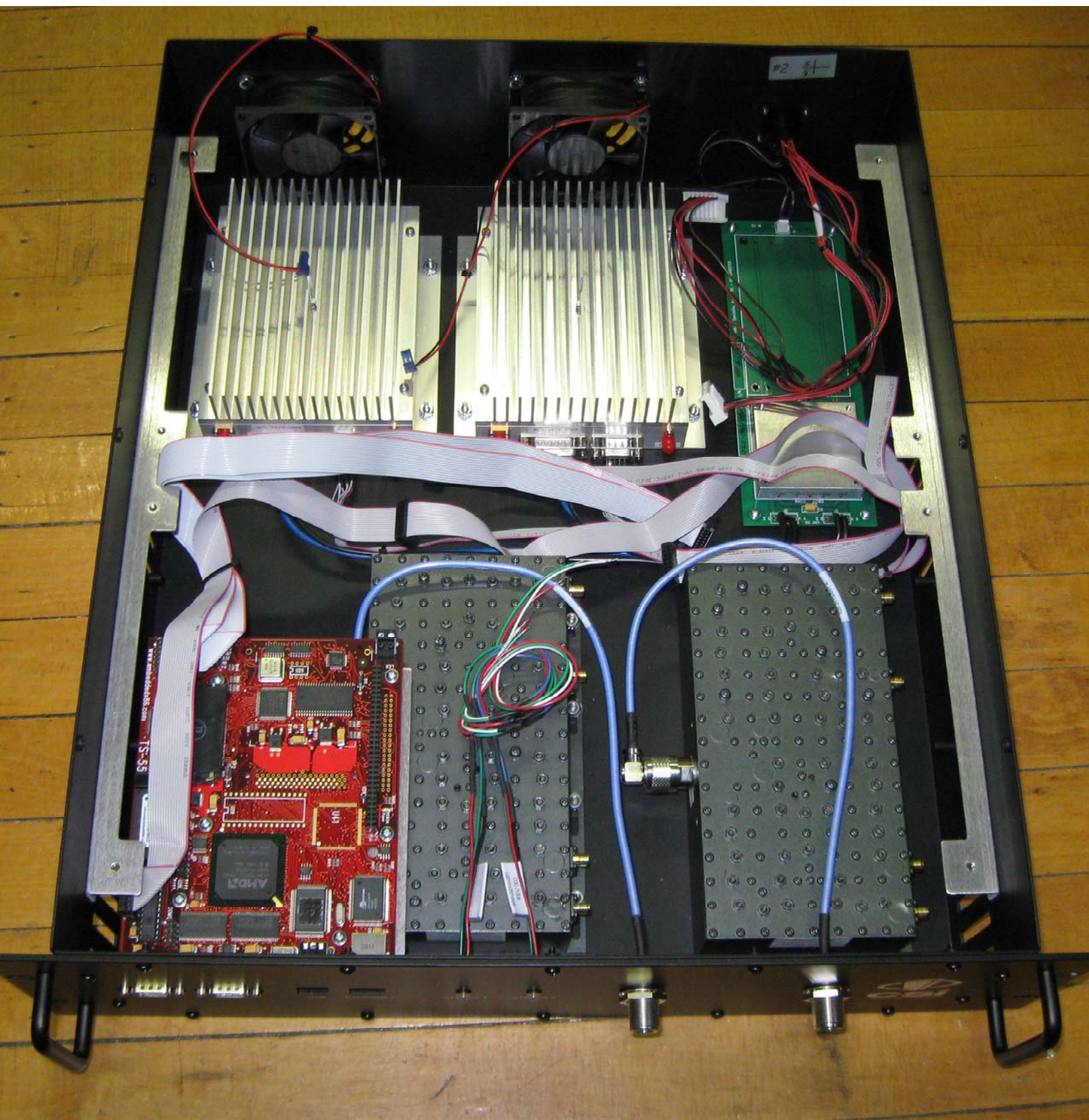




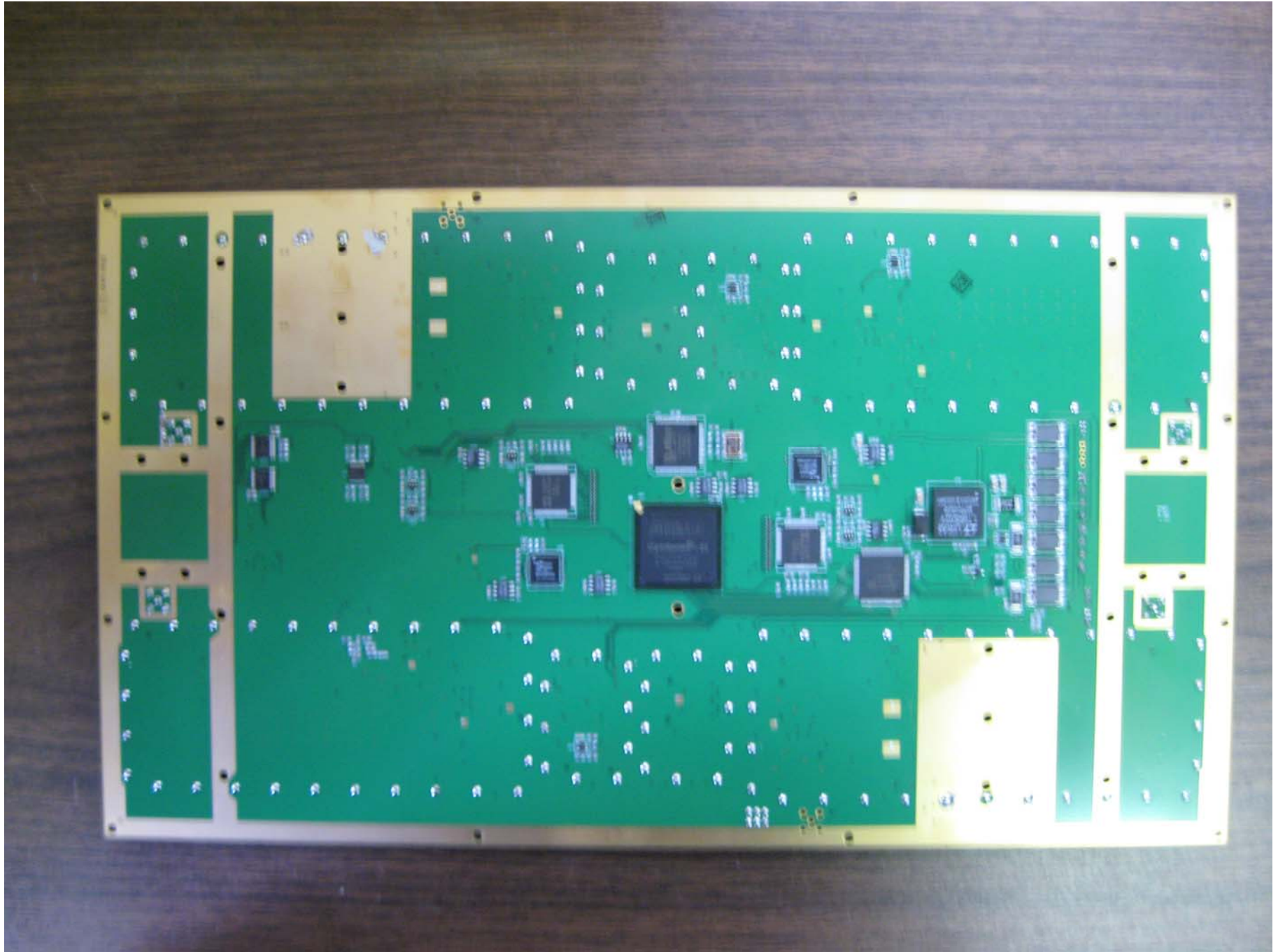




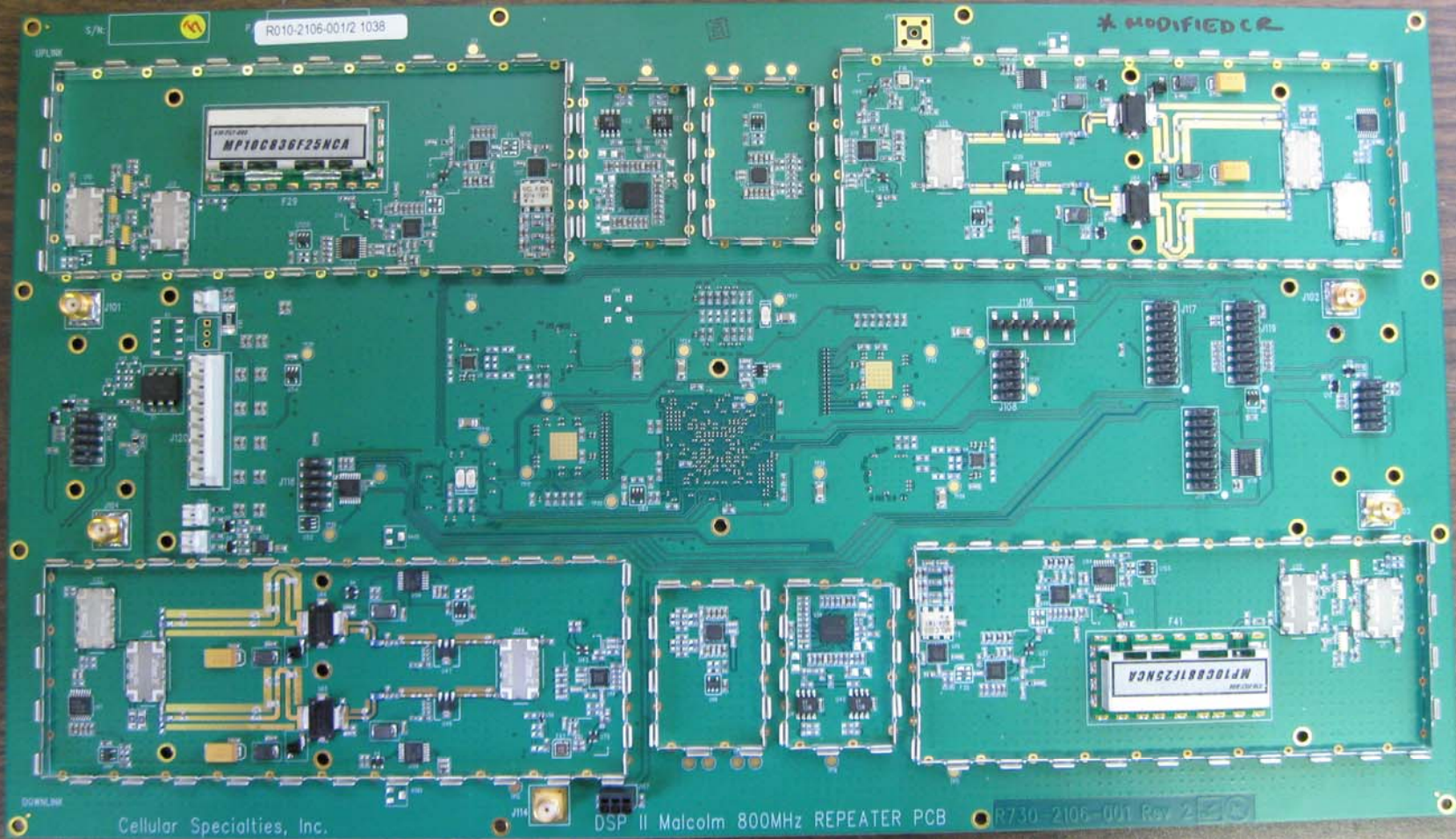












R010-2106-001/2 1038

\* MODIFIED CR

MP10C836F25NCA

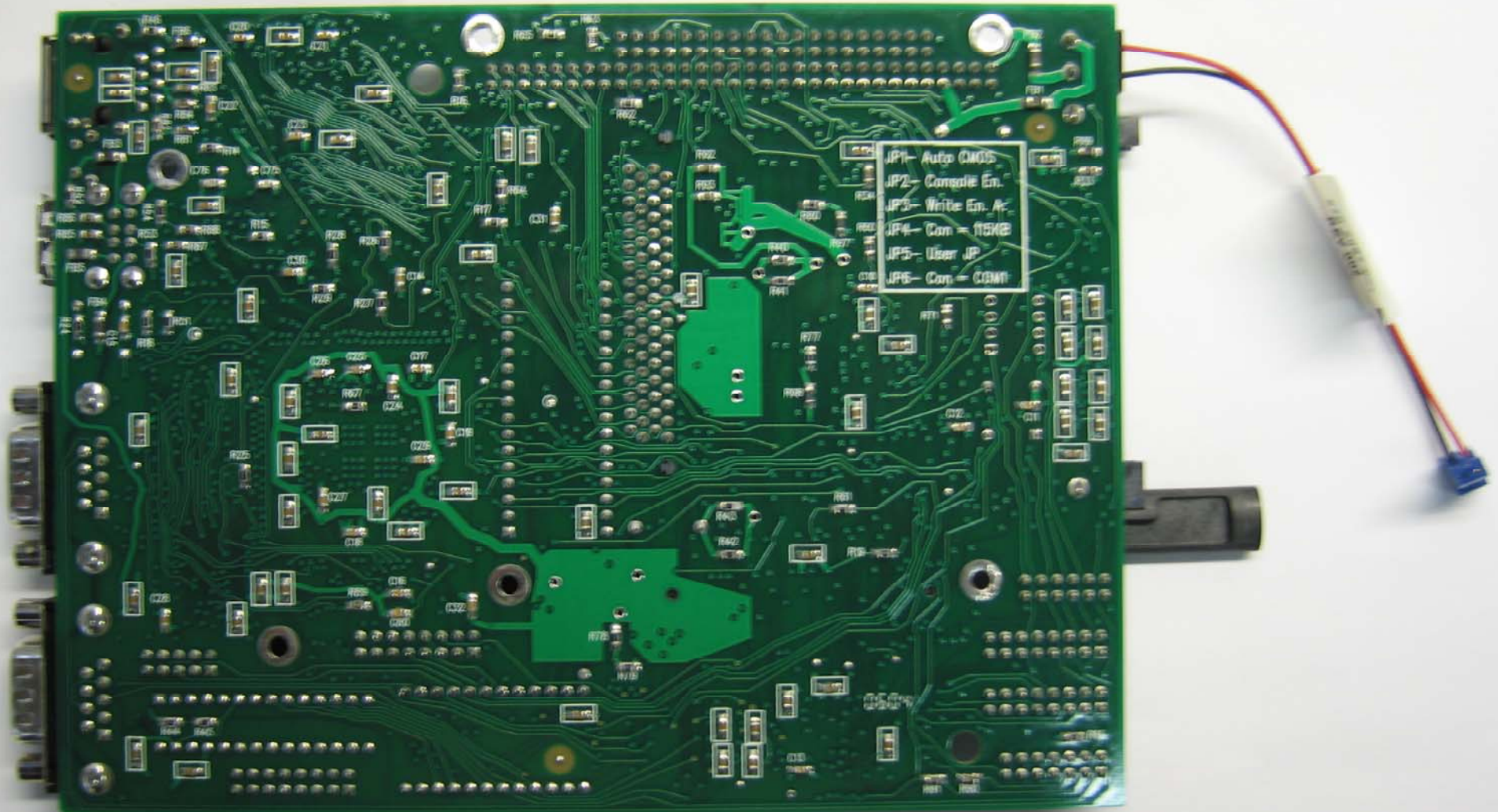
MP10C836F25NCA

Cellular Specialties, Inc.

DSP II Malcolm 800MHz REPEATER PCB

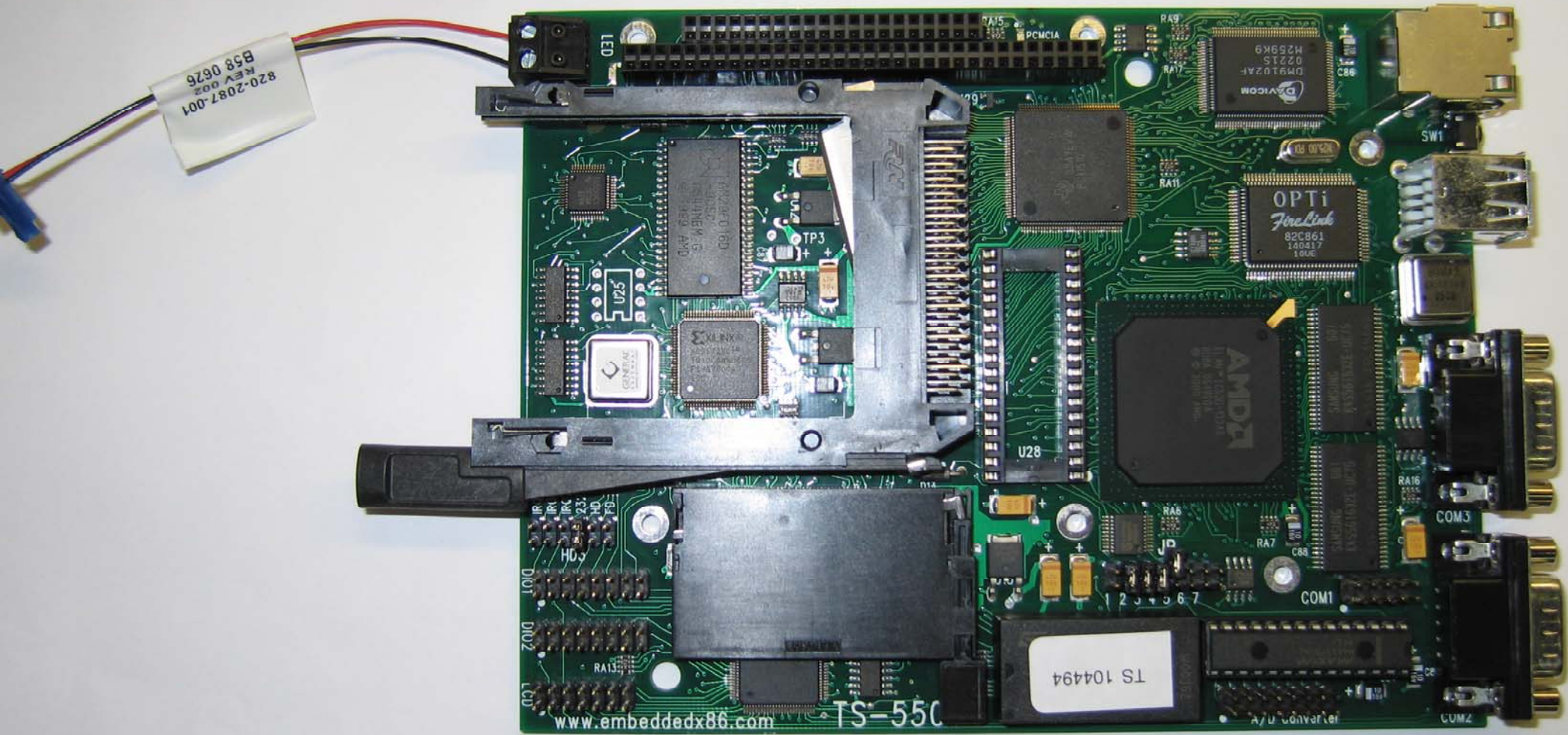
R730-2106-001 Rev 2





JP1- Auto CMOS  
JP2- Console En.  
JP3- Write En. A.  
JP4- Com = 115KB  
JP5- User JP  
JP6- Com = COM1





820-2087-001  
REV 002  
B58 0626

TS 104494

www.embeddedx86.com 055-S1