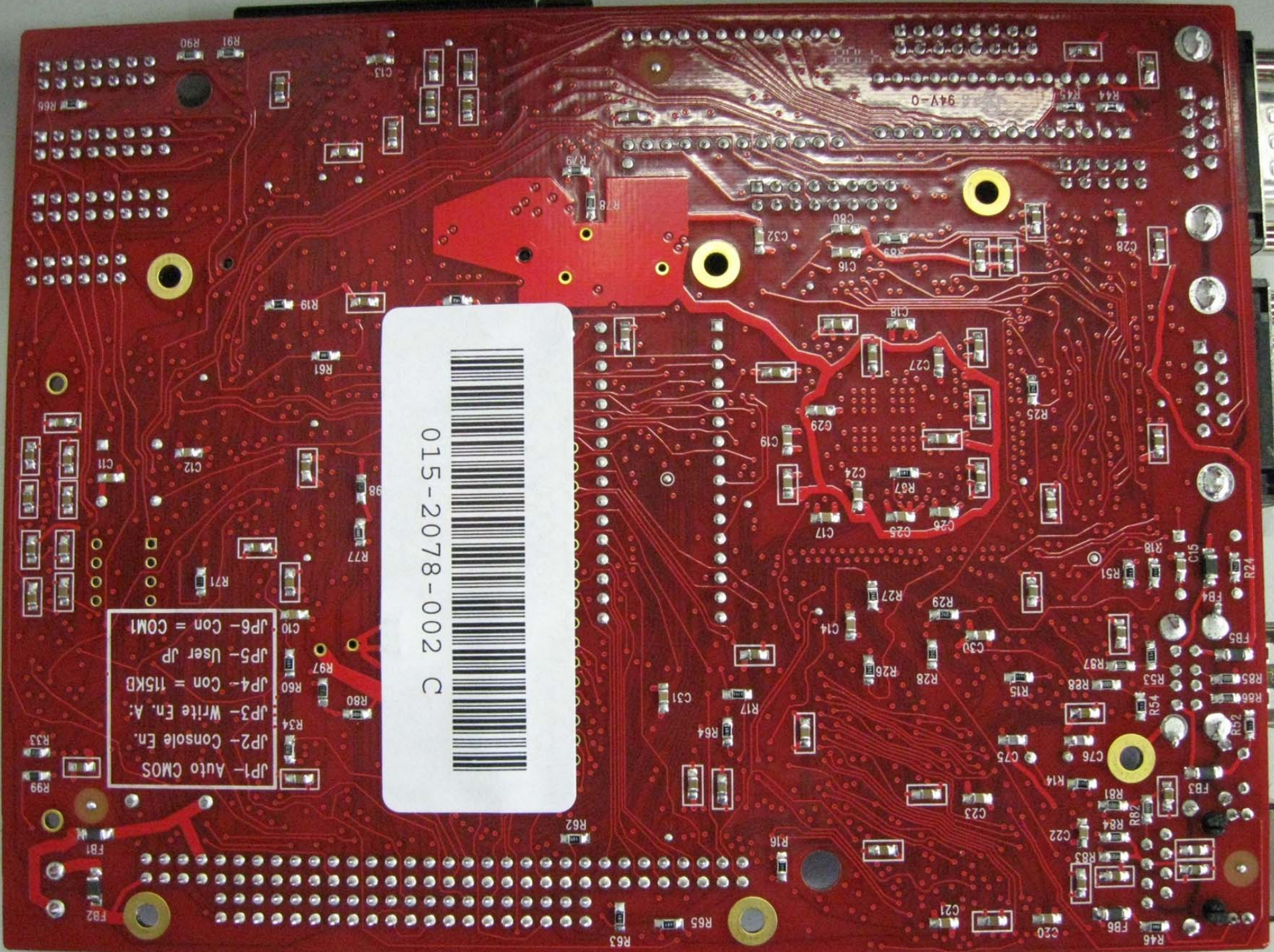
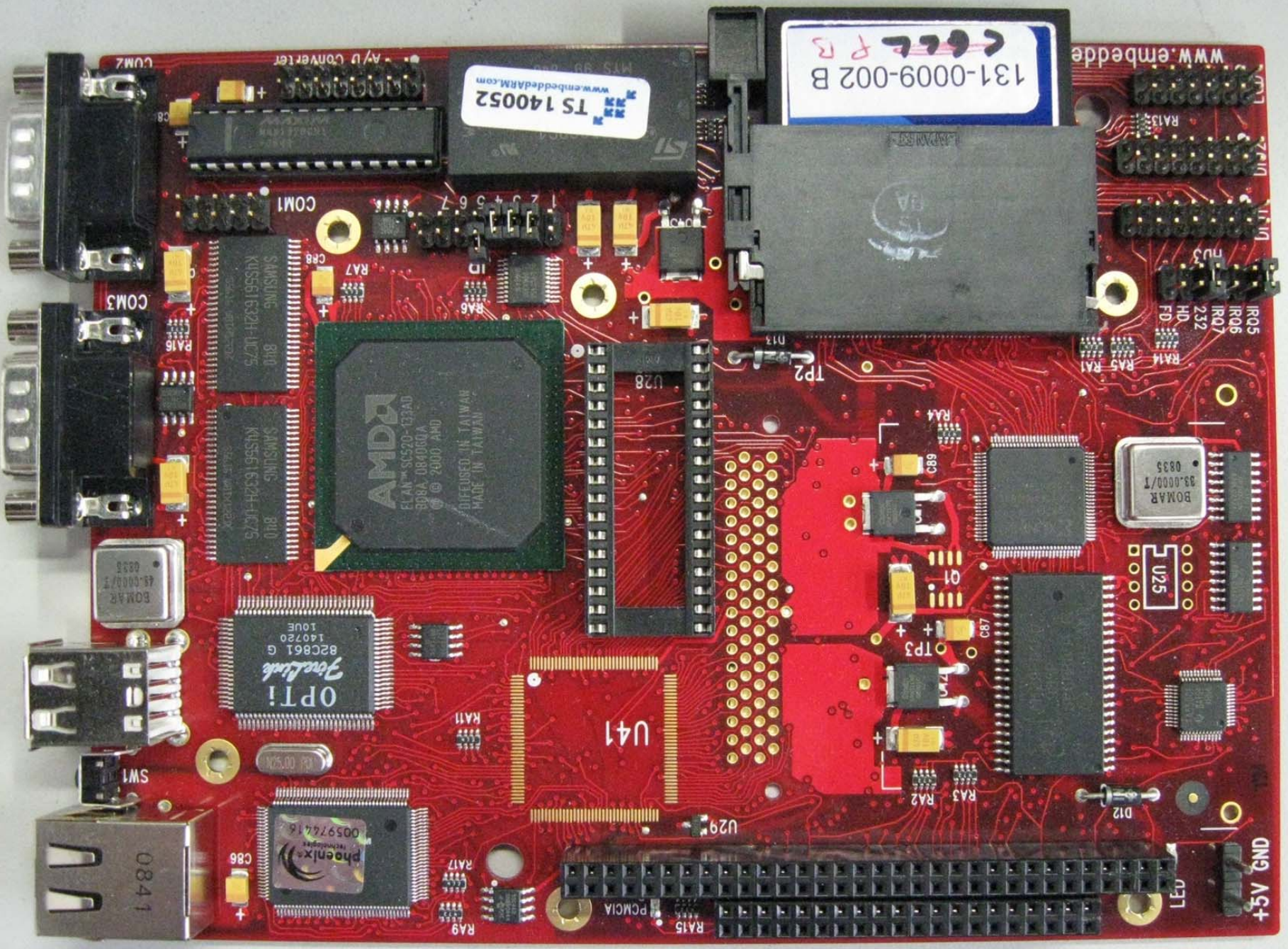


JP1- Auto CMOS
JP2- Console En.
JP3- Write En. A:
JP4- Con = 115KB
JP5- User JP
JP6- Con = COM1

015-2078-002 C





www.embeddedARM.com
TS 140052

131-0009-002 B
www.embeddedARM.com

AMD
R520
EYAN™ SCS20-ES3AD
308A 084000A
© 2000 AMD
DIEFUSED IN TAIWAN
MADE IN TAIWAN

Realtek
OPT!
82C861 G
140720
10UE

Phoenix
00597416

BOMAR
83.0000/1
0835

BOMAR
43.0000/1
0835

+5V GND

COM2
COM3

SW1
0841

PCMCIA

U25

U41

U28

COM1

A31

RA05
RA06
RA07
232
FD
RA14
RA5
RA1

RA13
RA12

RA11
RA10

RA9
RA8

RA7
RA6

RA5
RA4

RA3
RA2

RA1

RA0

RA-1

RA-2

RA-3

RA-4

RA-5

RA-6

RA-7

RA-8

RA-9

RA-10

RA-11

RA-12

RA-13

RA-14

RA-15

RA-16

RA-17

RA-18

RA-19

RA-20

RA-21

RA-22

RA-23

RA-24

RA-25

RA-26

RA-27

RA-28

RA-29

RA-30

RA-31

RA-32

RA-33

RA-34

RA-35

RA-36

RA-37

RA-38

RA-39

RA-40

RA-41

RA-42

RA-43

RA-44

RA-45

RA-46

RA-47

RA-48

RA-49

RA-50

RA-51

RA-52

RA-53

RA-54

RA-55

RA-56

RA-57

RA-58

RA-59

RA-60

RA-61

RA-62

RA-63

RA-64

RA-65

RA-66

RA-67

RA-68

RA-69

RA-70

RA-71

RA-72

RA-73

RA-74

RA-75

RA-76

RA-77

RA-78

RA-79

RA-80

RA-81

RA-82

RA-83

RA-84

RA-85

RA-86

RA-87

RA-88

RA-89

RA-90

RA-91

RA-92

RA-93

RA-94

RA-95

RA-96

RA-97

RA-98

RA-99

RA-100

RA-101

RA-102

RA-103

RA-104

RA-105

RA-106

RA-107

RA-108

RA-109

RA-110

RA-111

RA-112

RA-113

RA-114

RA-115

RA-116

RA-117

RA-118

RA-119

RA-120

RA-121

RA-122

RA-123

RA-124

RA-125

RA-126

RA-127

RA-128

RA-129

RA-130

RA-131

RA-132

RA-133

RA-134

RA-135

RA-136

RA-137

RA-138

RA-139

RA-140

RA-141

RA-142

RA-143

RA-144

RA-145

RA-146

RA-147

RA-148

RA-149

RA-150

RA-151

RA-152

RA-153

RA-154

RA-155

RA-156

RA-157

RA-158

RA-159

RA-160

RA-161

RA-162

RA-163

RA-164

RA-165

RA-166

RA-167

RA-168

RA-169

RA-170

RA-171

RA-172

RA-173

RA-174

RA-175

RA-176

RA-177

RA-178

RA-179

RA-180

RA-181

RA-182

RA-183

RA-184

RA-185

RA-186

RA-187

RA-188

RA-189

RA-190

RA-191

RA-192

RA-193

RA-194

RA-195

RA-196

RA-197

RA-198

RA-199

RA-200

RA-201

RA-202

RA-203

RA-204

RA-205

RA-206

RA-207

RA-208

RA-209

RA-210

RA-211

RA-212

RA-213

RA-214

RA-215

RA-216

RA-217

RA-218

RA-219

RA-220

RA-221

RA-222

RA-223

RA-224

RA-225

RA-226

RA-227

RA-228

RA-229

RA-230

RA-231

RA-232

RA-233

RA-234

RA-235

RA-236

RA-237

RA-238

RA-239

RA-240

RA-241

RA-242

RA-243

RA-244

RA-245

RA-246

RA-247

RA-248

RA-249

RA-250

RA-251

RA-252

RA-253

RA-254

RA-255

RA-256

RA-257

RA-258

RA-259

RA-260

RA-261

RA-262

RA-263

RA-264

RA-265

RA-266

RA-267

RA-268

RA-269

RA-270

RA-271

RA-272

RA-273

RA-274

RA-275

RA-276

RA-277

RA-278

RA-279

RA-280

RA-281

RA-282

RA-283

RA-284

RA-285

RA-286

RA-287

RA-288

RA-289

RA-290

RA-291

RA-292

RA-293

RA-294

RA-295

RA-296

RA-297

RA-298

RA-299

RA-300

RA-301

RA-302

RA-303

RA-304

RA-305

RA-306

RA-307

RA-308

RA-309

RA-310

RA-311

RA-312

RA-313

RA-314

RA-315

RA-316

RA-317

RA-318

RA-319

RA-320





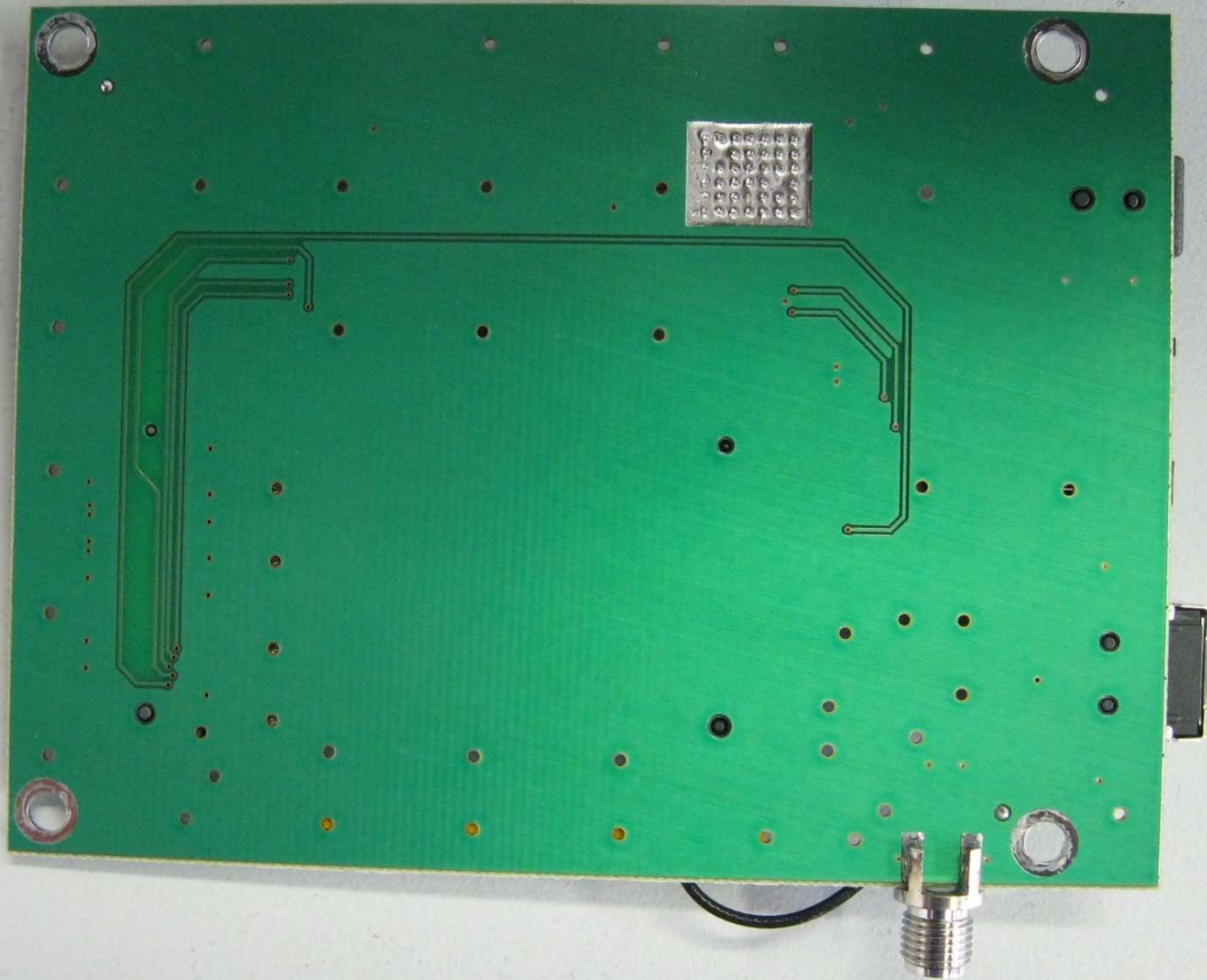




SIGNAL

DL
IN

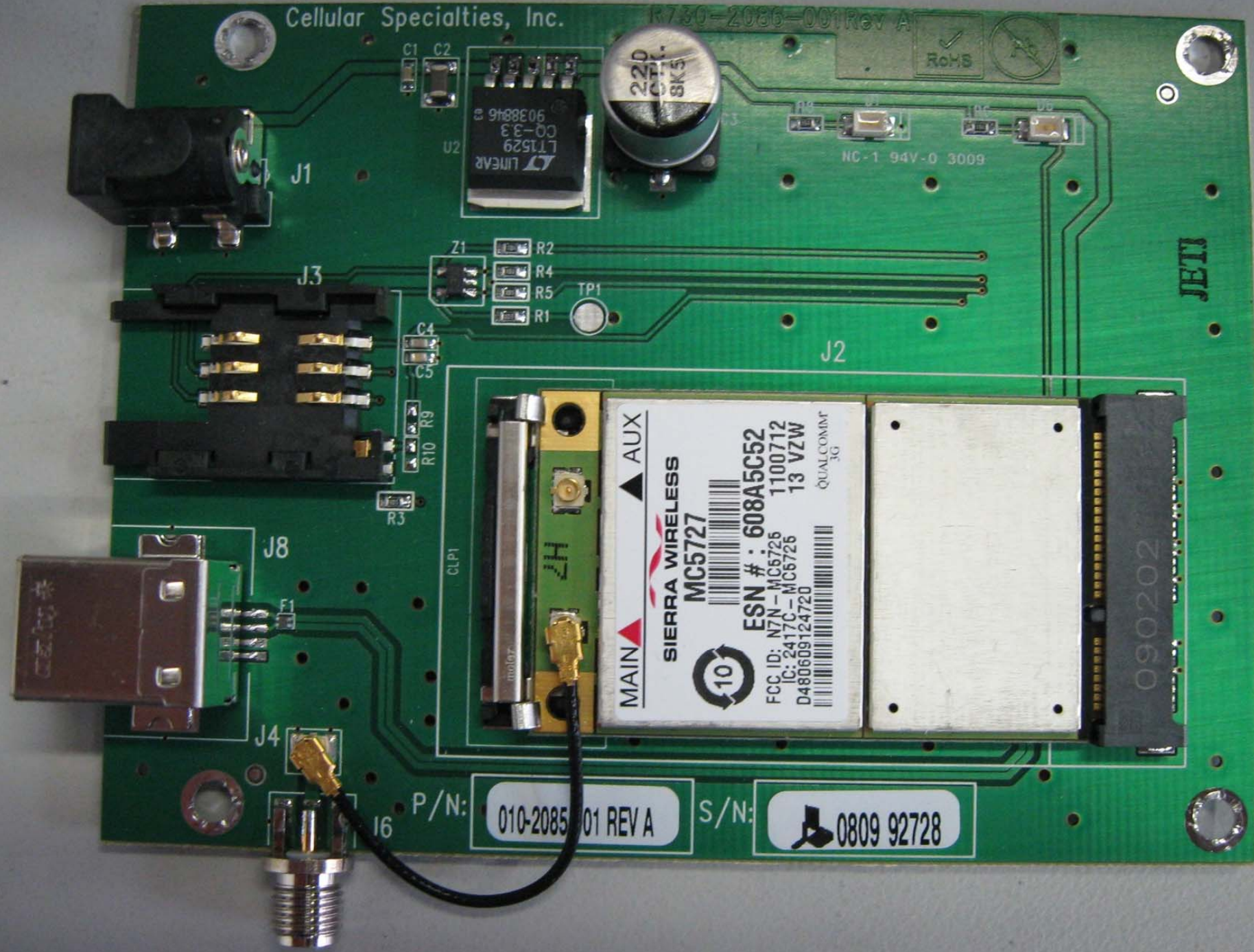




Cellular Specialties, Inc.

R730-2085-001 Rev A

RoHS



NC-1 94V-0 3009

JET

MAIN ▲ AUX

SIERRA WIRELESS

MC5727

ESN #: 608A5C52

FCC ID: N7N-MC5726 1100712

IC: 2417C-MC5726 13 VZW

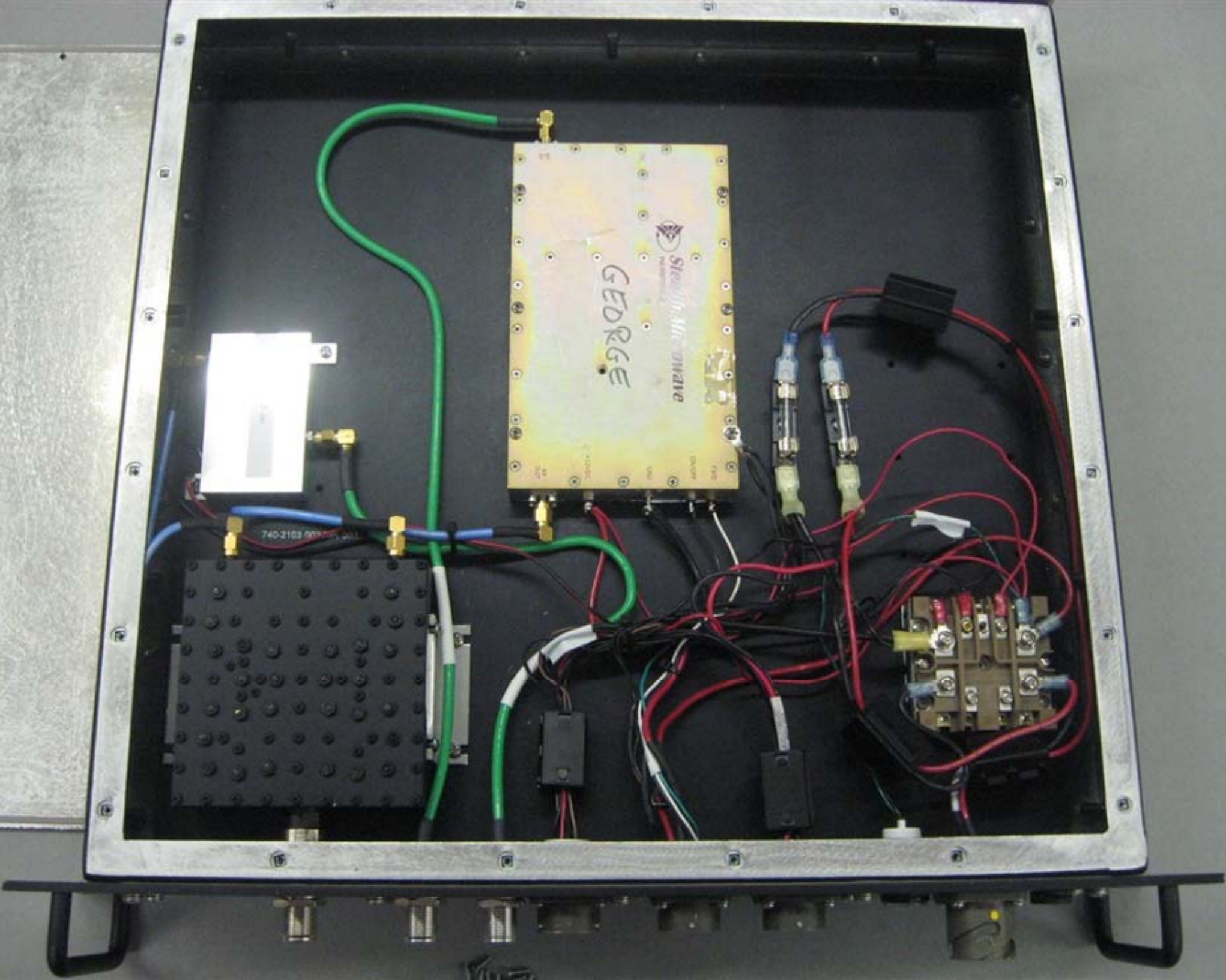
D480609124720

QUALCOMM 3G

090202

P/N: 010-2085 001 REV A

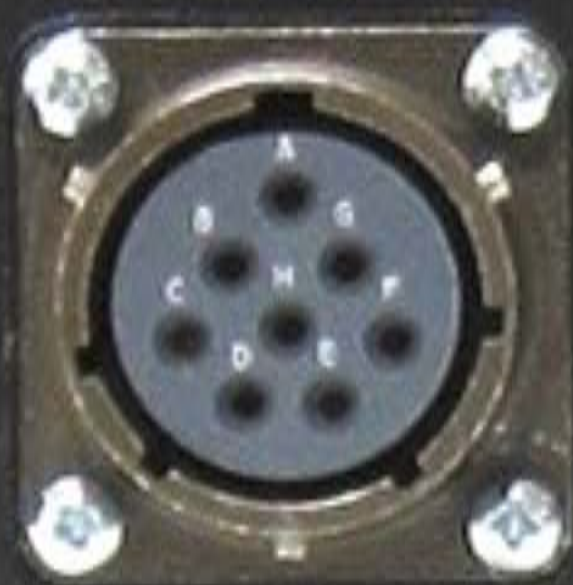
S/N: 0809 92728



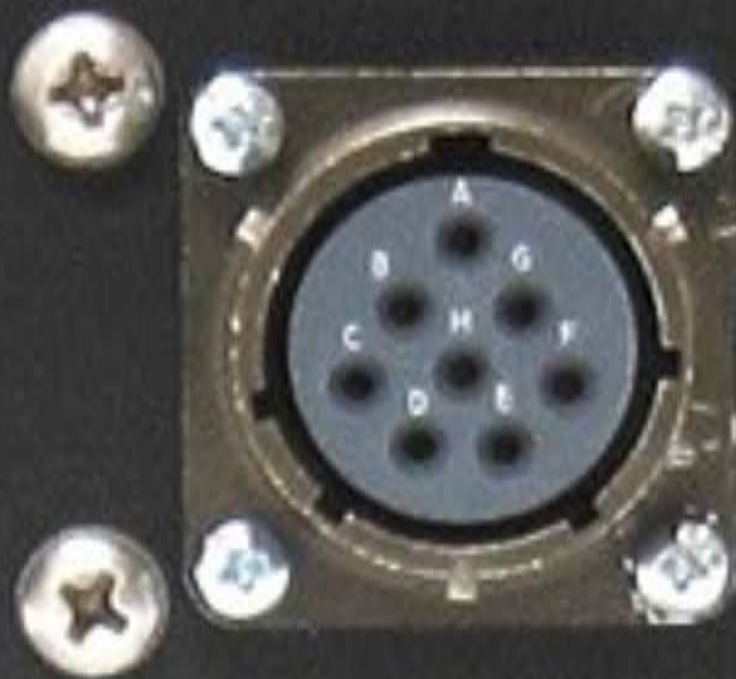


GEORGE

SIGNAL

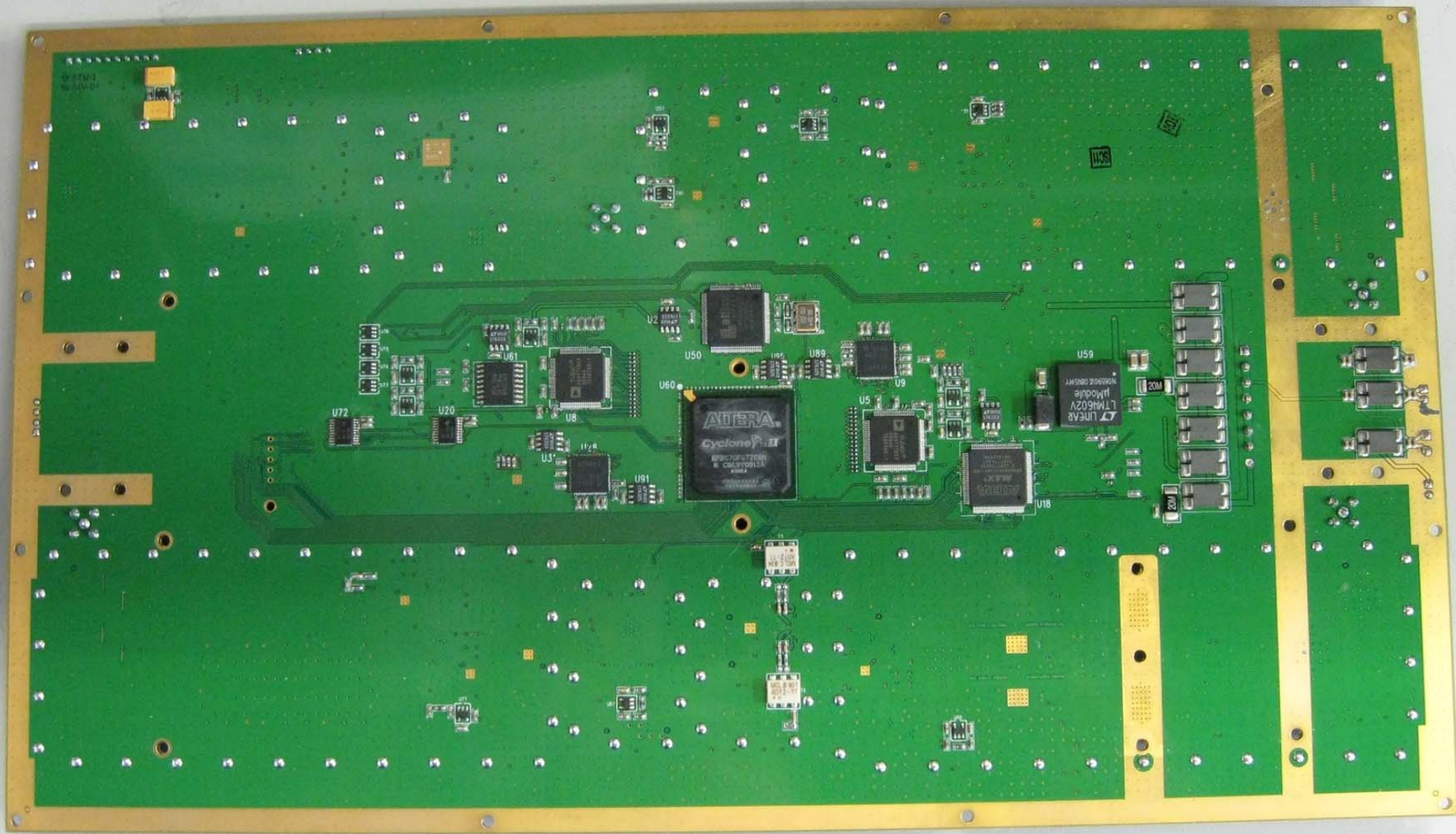


FANS



DL
OUT





010-2091-001/1 0921

S/N S/N-003

MP10CR36F25NCA

MP10CB1725NCA

Cellular Specialties, Inc.

800MHz REPEATER PCB

R730-2092-001 Rev. 1

b Saw Rework Done
Cap Rework Done

