

Cellular Specialties, Inc.
Dual Modem USB 2.0 Hub PCB
730-2083-001 Rev 3

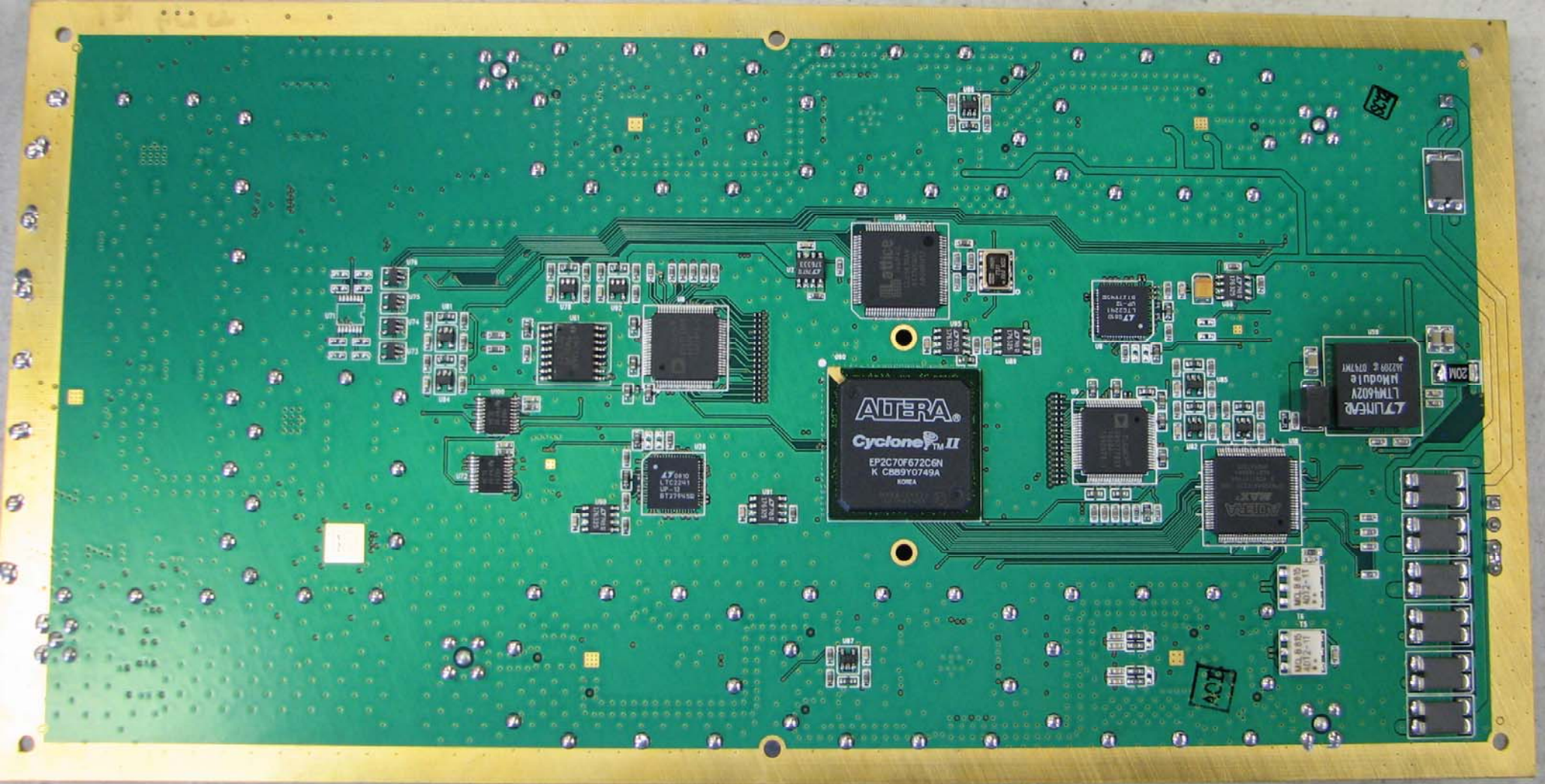
010-2082-001/3 0831

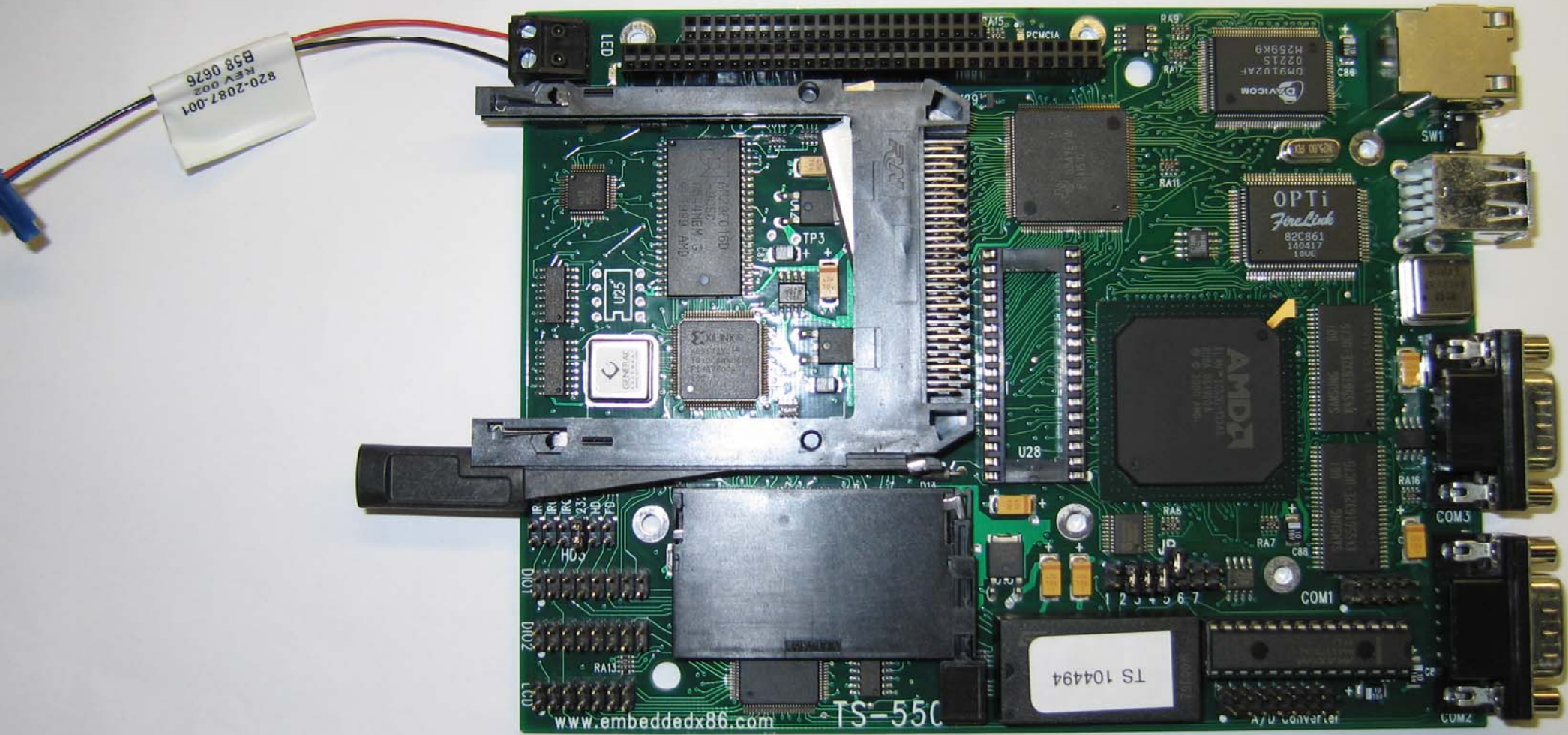
AOI

080604

080604

R49 R48 R47 R46 R45 R44 R43 R42 R41
R39 R38 R37
R35 R34 R33 R32 R31 R30 R29 R28 R27 R26 R25 R24 R23 R22 R21 R20 R19 R18 R17 R16 R15 R14 R13 R12 R11 R10 R9 R8 R7 R6 R5 R4 R3 R2 R1
C17 C16 C15 C14 C13 C12 C11 C10 C9 C8 C7 C6 C5 C4 C3 C2 C1
U1 U2 U3 U4 U5 U6 U7 U8 U9 U10 U11 U12 U13 U14 U15 U16 U17 U18 U19 U20 U21 U22 U23 U24 U25 U26 U27 U28 U29 U30 U31 U32 U33 U34 U35 U36 U37 U38 U39 U40 U41 U42 U43 U44 U45 U46 U47 U48 U49 U50 U51 U52 U53 U54 U55 U56 U57 U58 U59 U60 U61 U62 U63 U64 U65 U66 U67 U68 U69 U70 U71 U72 U73 U74 U75 U76 U77 U78 U79 U80 U81 U82 U83 U84 U85 U86 U87 U88 U89 U90 U91 U92 U93 U94 U95 U96 U97 U98 U99 U100

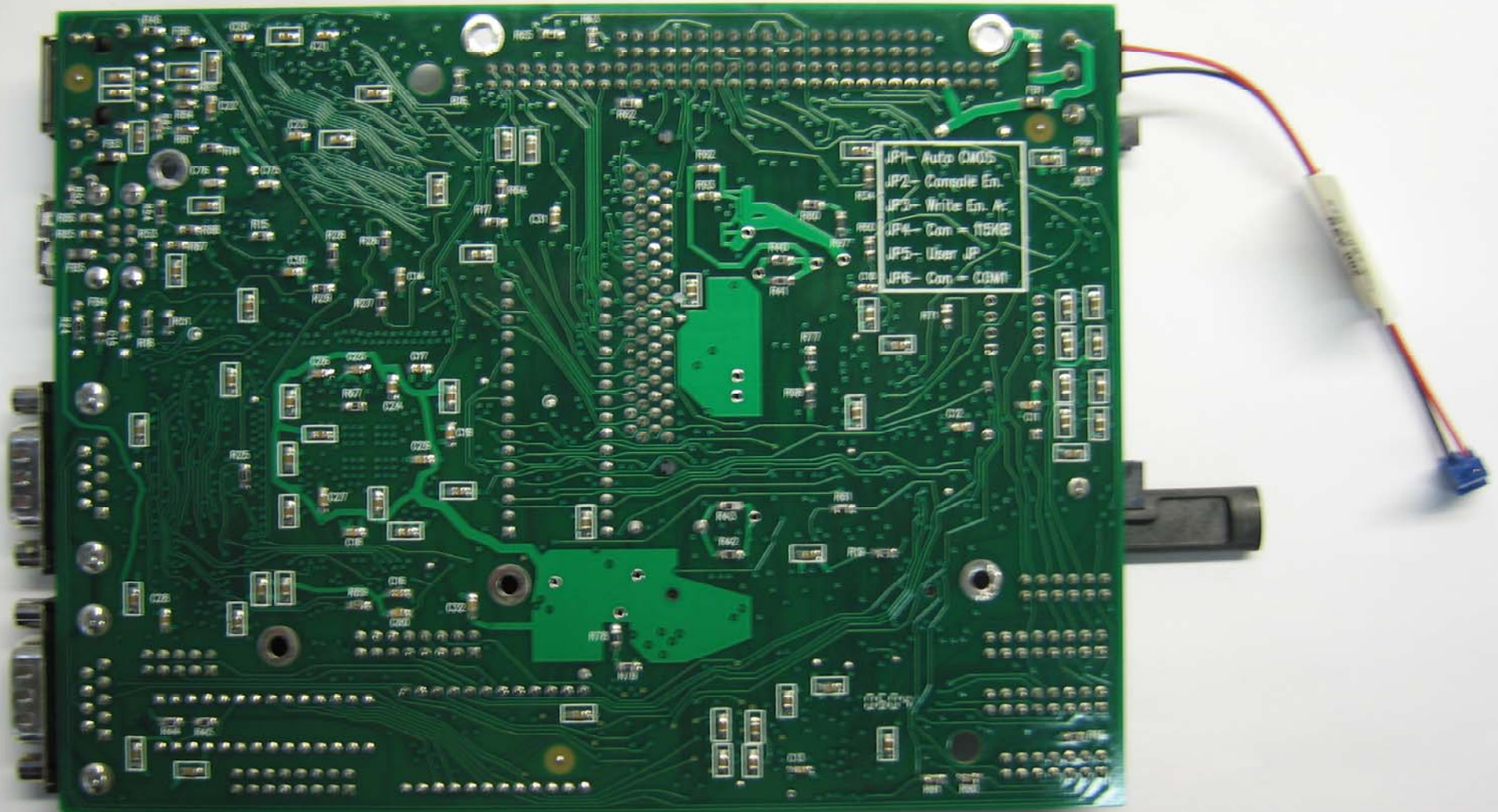




820-2087-001
REV 002
B58 0626

TS 104494

www.embeddedx86.com 550-S1



JP1- Auto CMOS
JP2- Console En.
JP3- Write En. A.
JP4- Com = 115KB
JP5- User JP
JP6- Com = COM1

010-2072-001/5 0826

S/N:

MP10C1880F60NC

F29

J5

J6

J7

J2

J13

J23

J4

MP10C1880F60NC

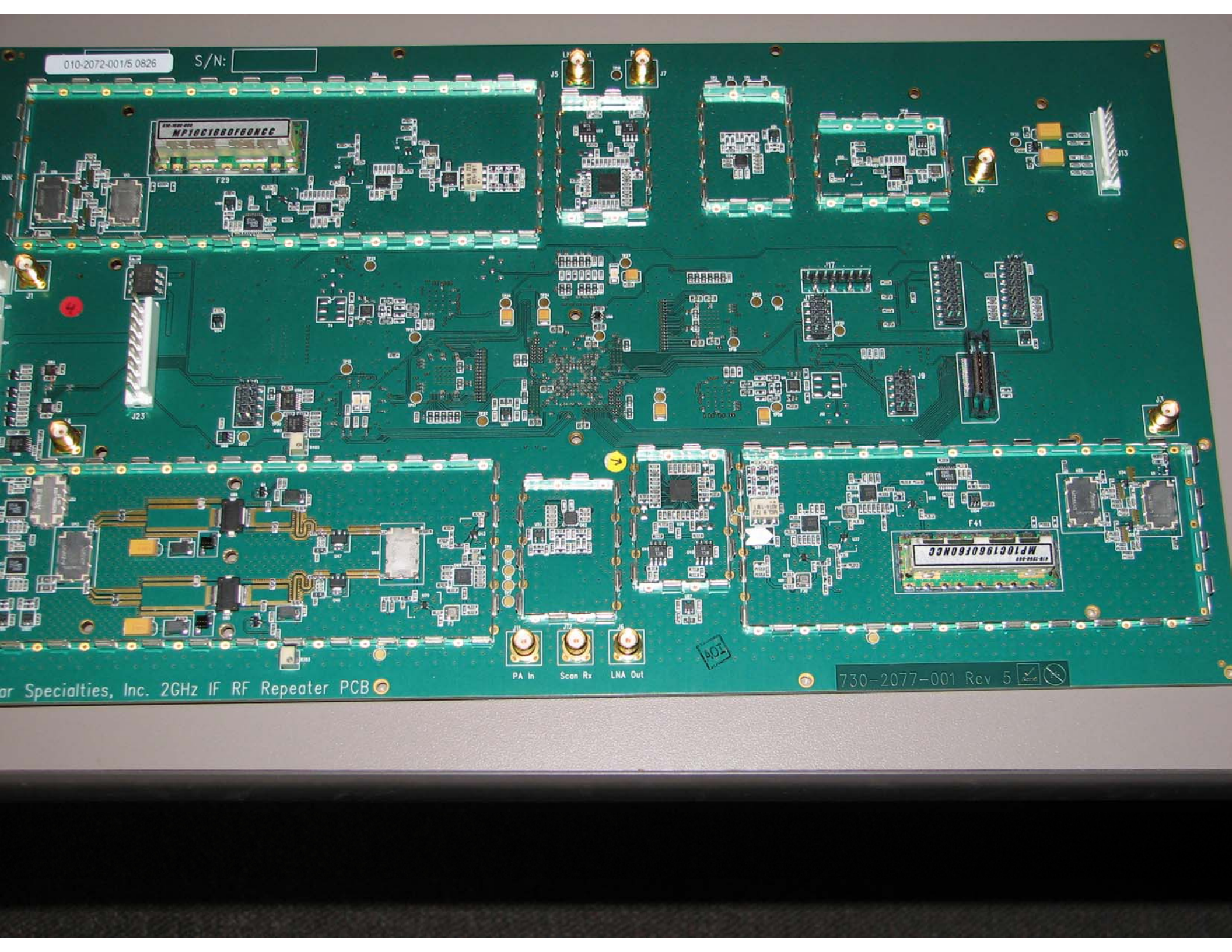
F41

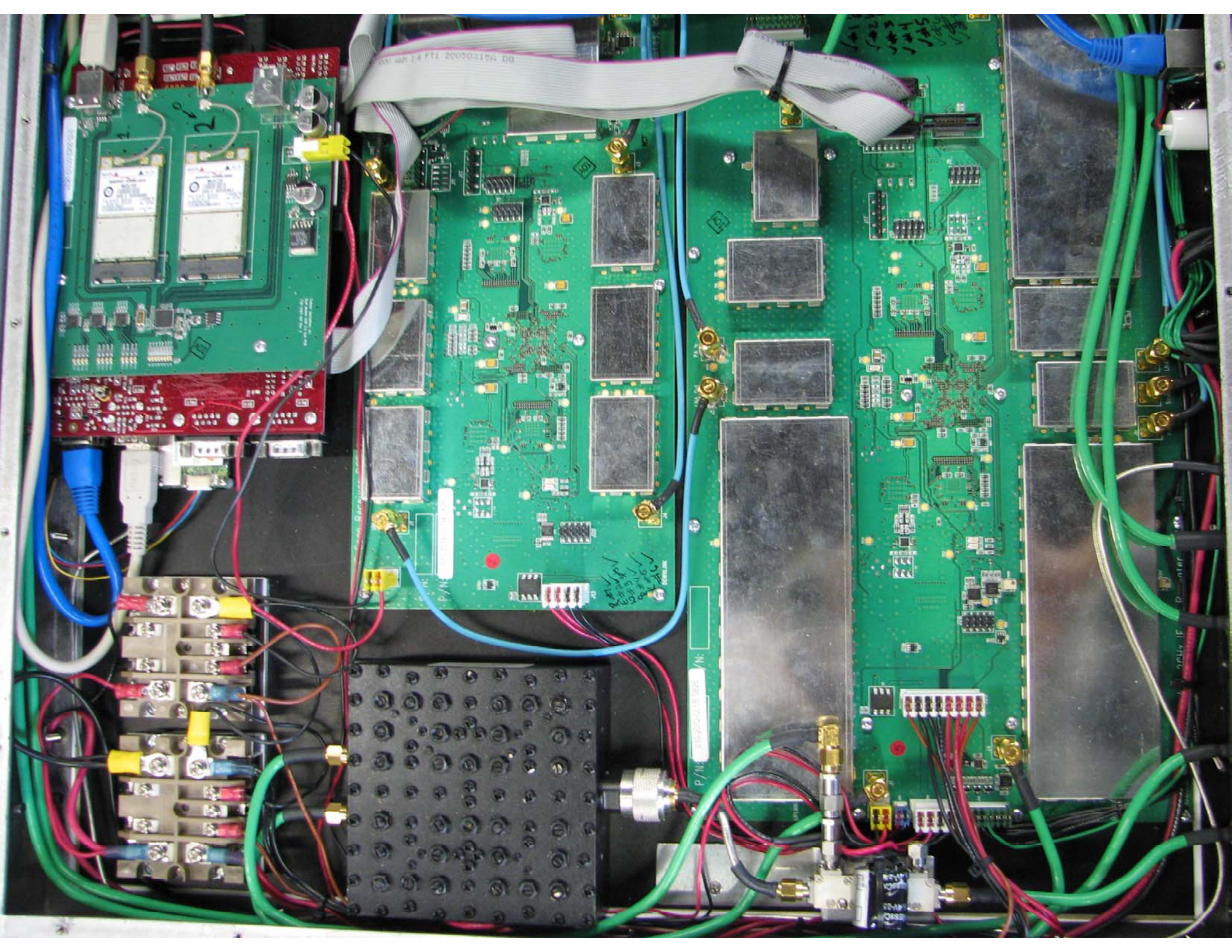
PA In
Scan Rx
LNA Out

401

730-2077-001 Rev 5

Specialties, Inc. 2GHz IF RF Repeater PCB





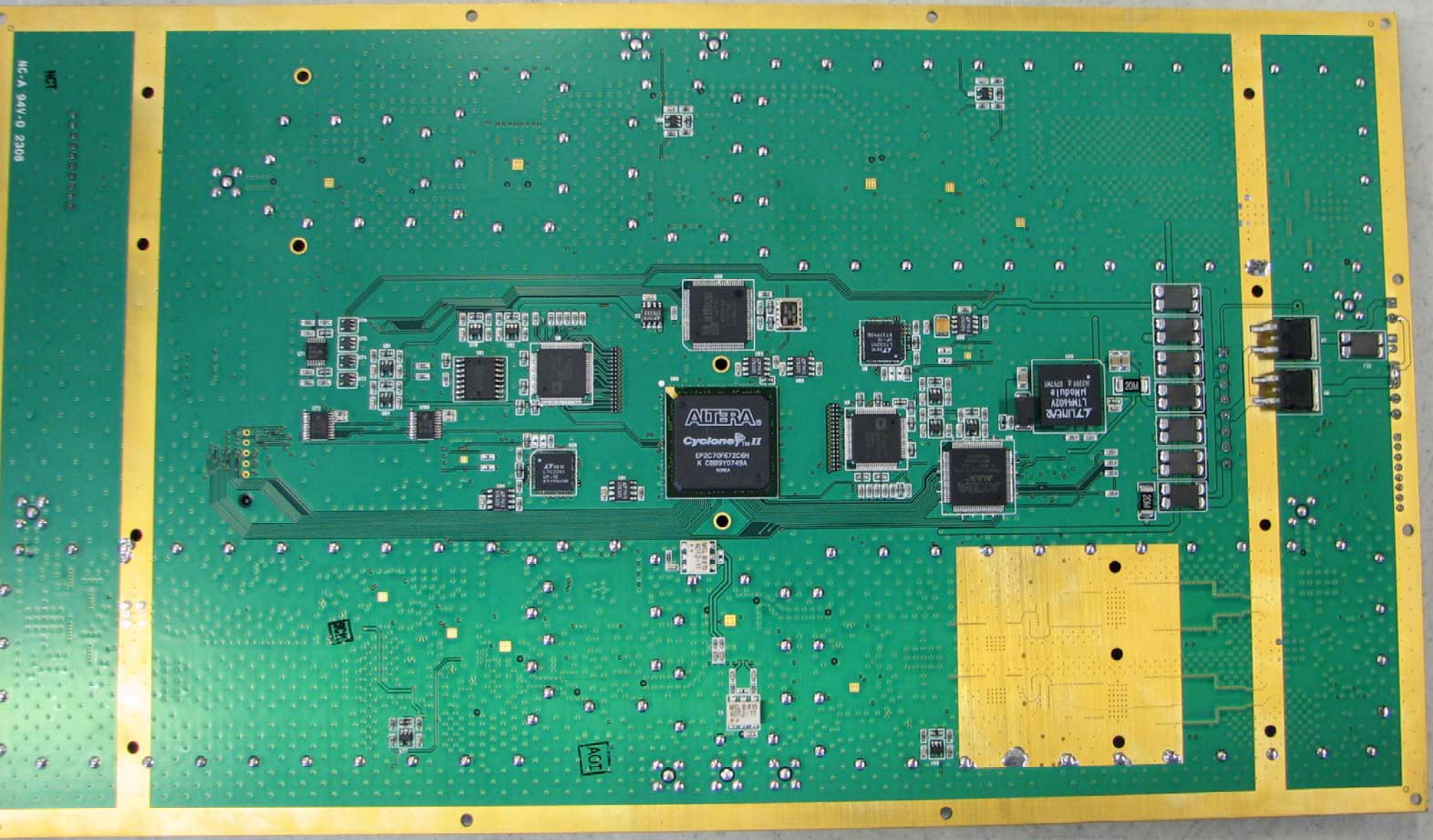
HC-A-94V-D 2303

WCT

ALTERA
Cyclone II
EP2C70682C0H
A 0309Y0749A

ALTERA
Module
L71M02V
120M x 60MM

10V

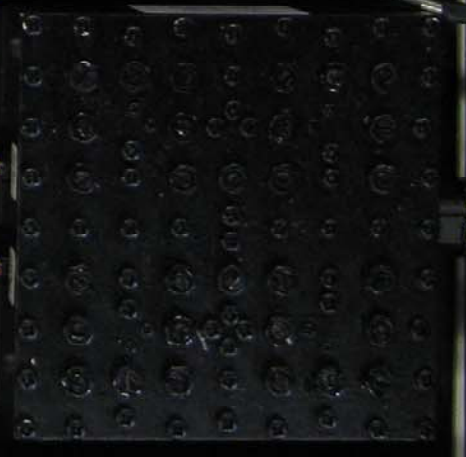
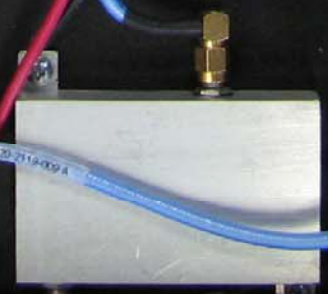
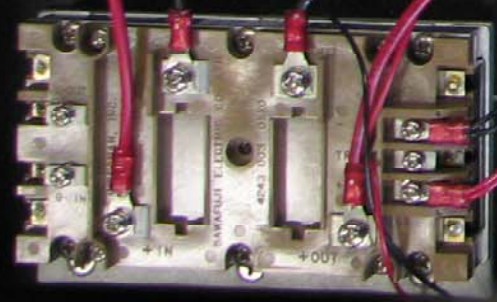


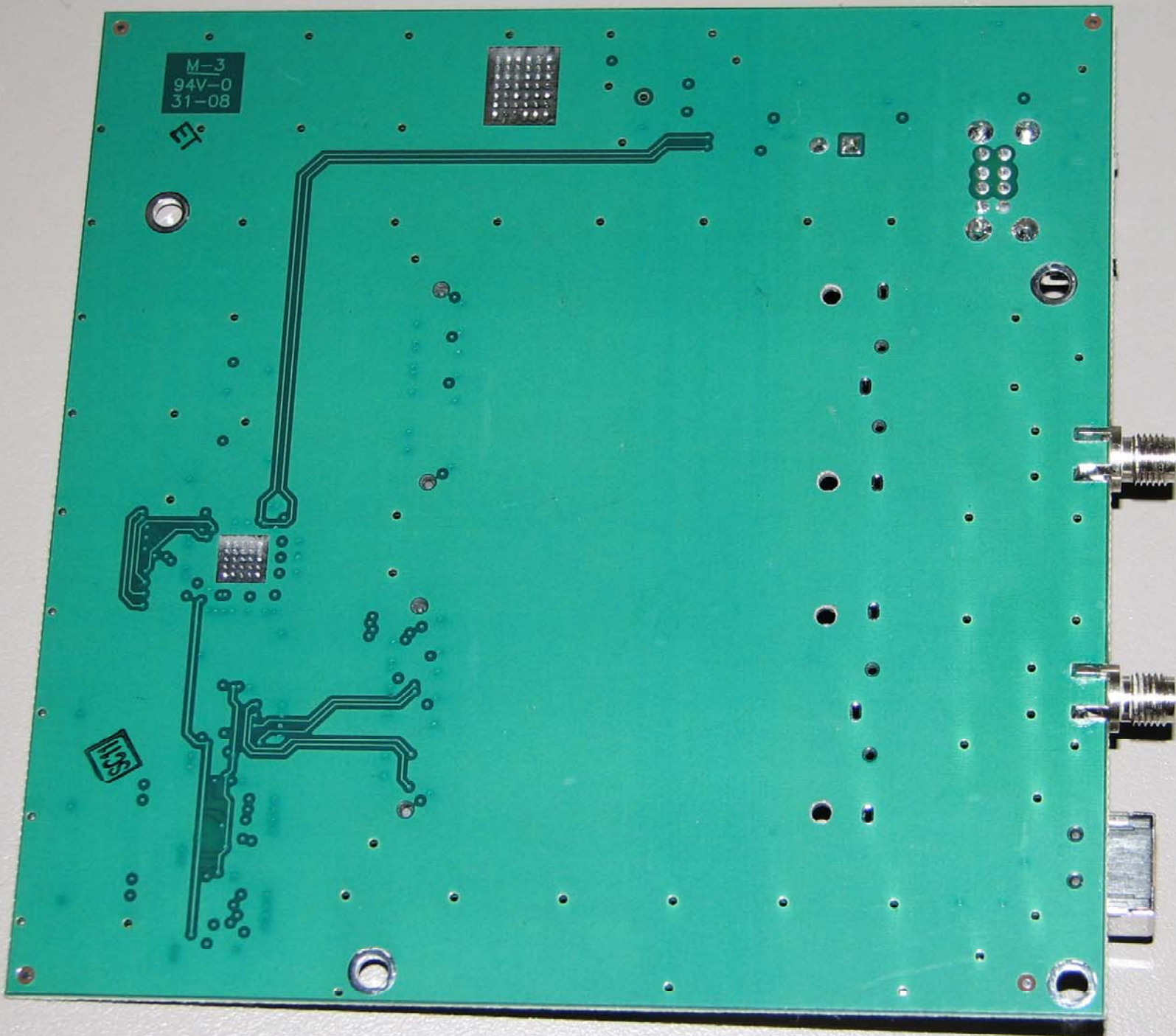


Stealth Microwave
INCORPORATED

Model: SM1919-47LQCS-01-02-13-24-26
S/N: 31029 Lot: 08-310

Made in USA





IF Scan Receiver PCB 730-2078-001 Rev 4

UPLINK

S/N:

P/N:

010-2078-001/A 0926

NGT

NO-A 94V-0 2308
Cellular Specialties, Inc.

