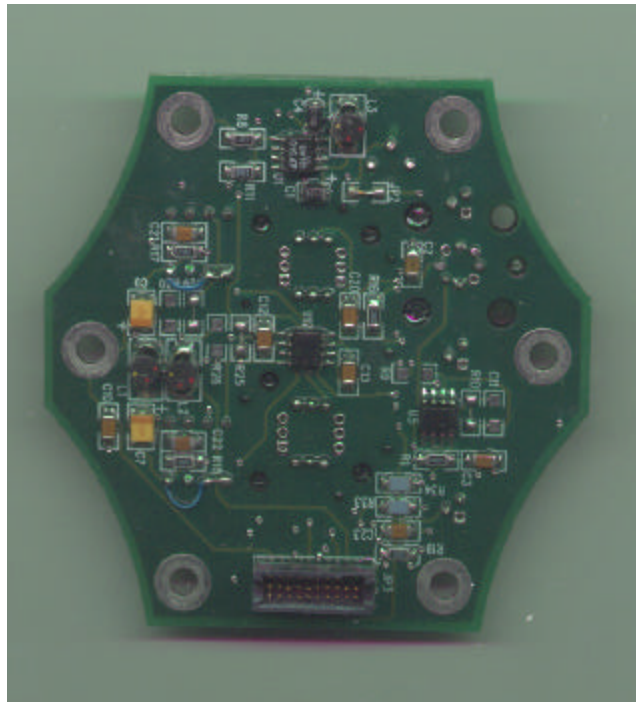
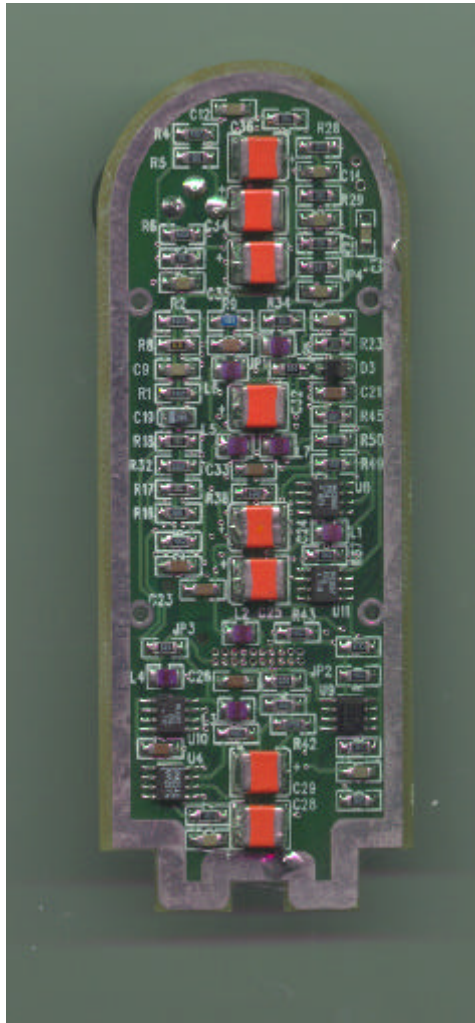


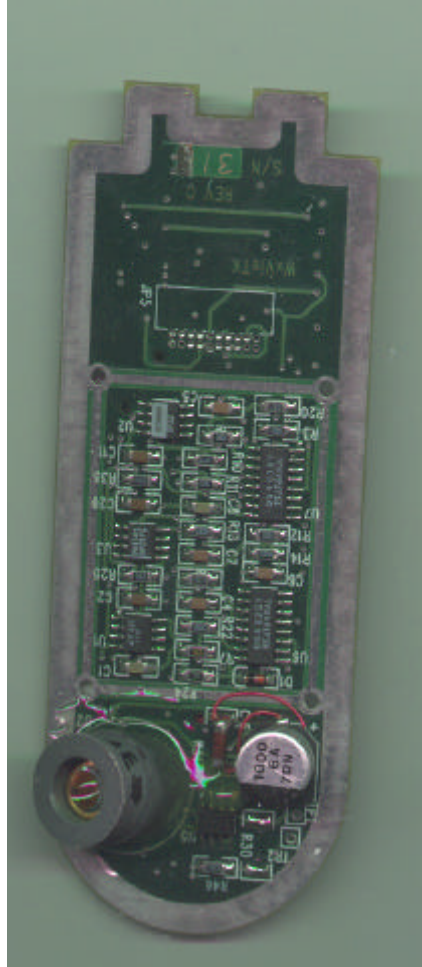
Part # 29-Serial #WxSENSOR Rev. B Component Side



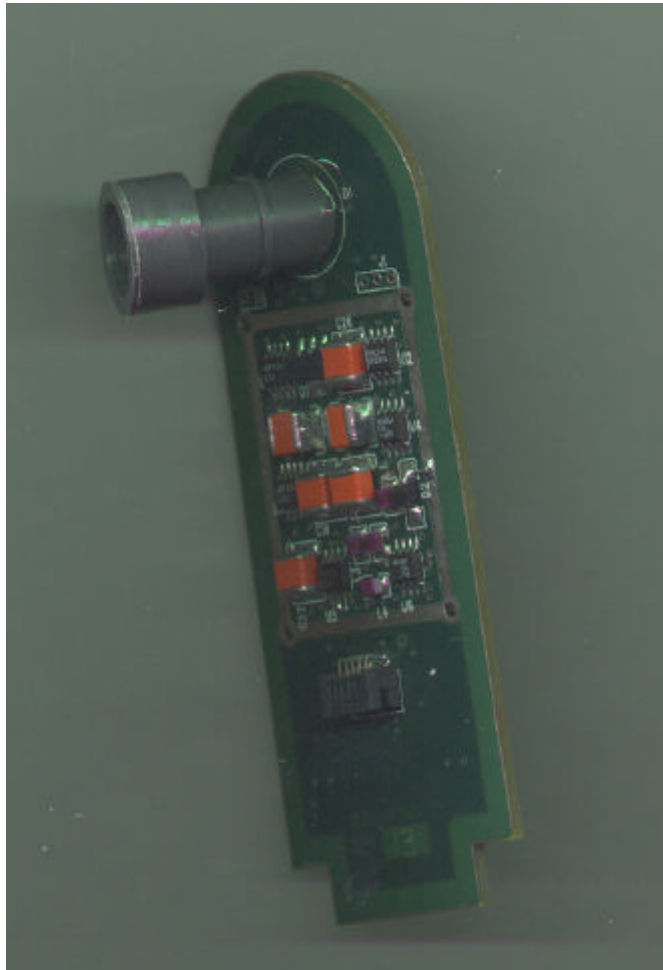
Part # 29-Serial #WxSENSOR Rev. B Solder Side



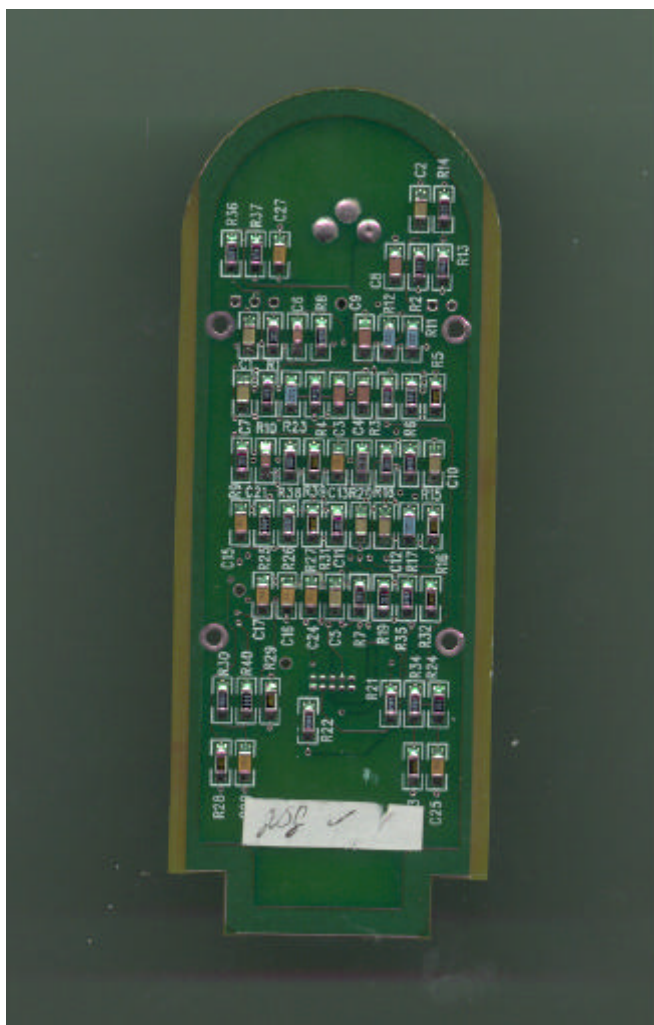
Part #31-Serial#WxVisTX Rev. C component side



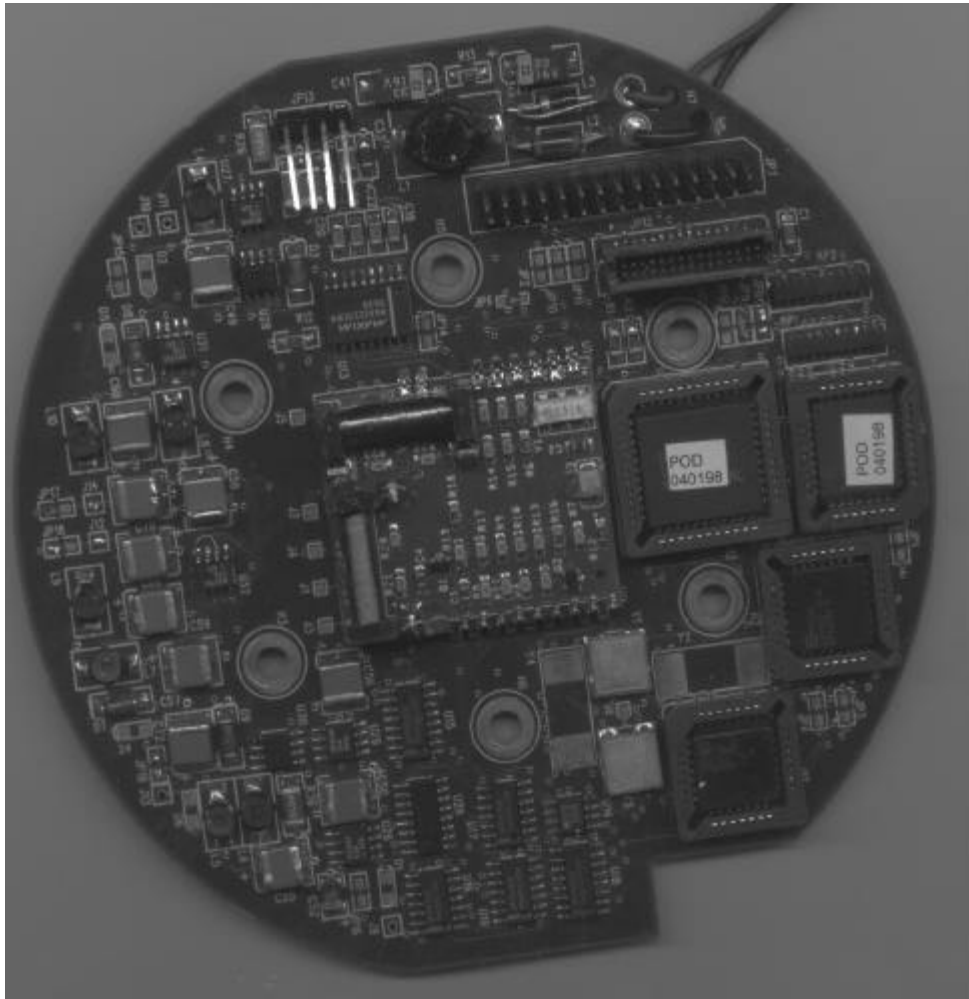
Part #31-Serial#WxVisTX Rev. C solder side



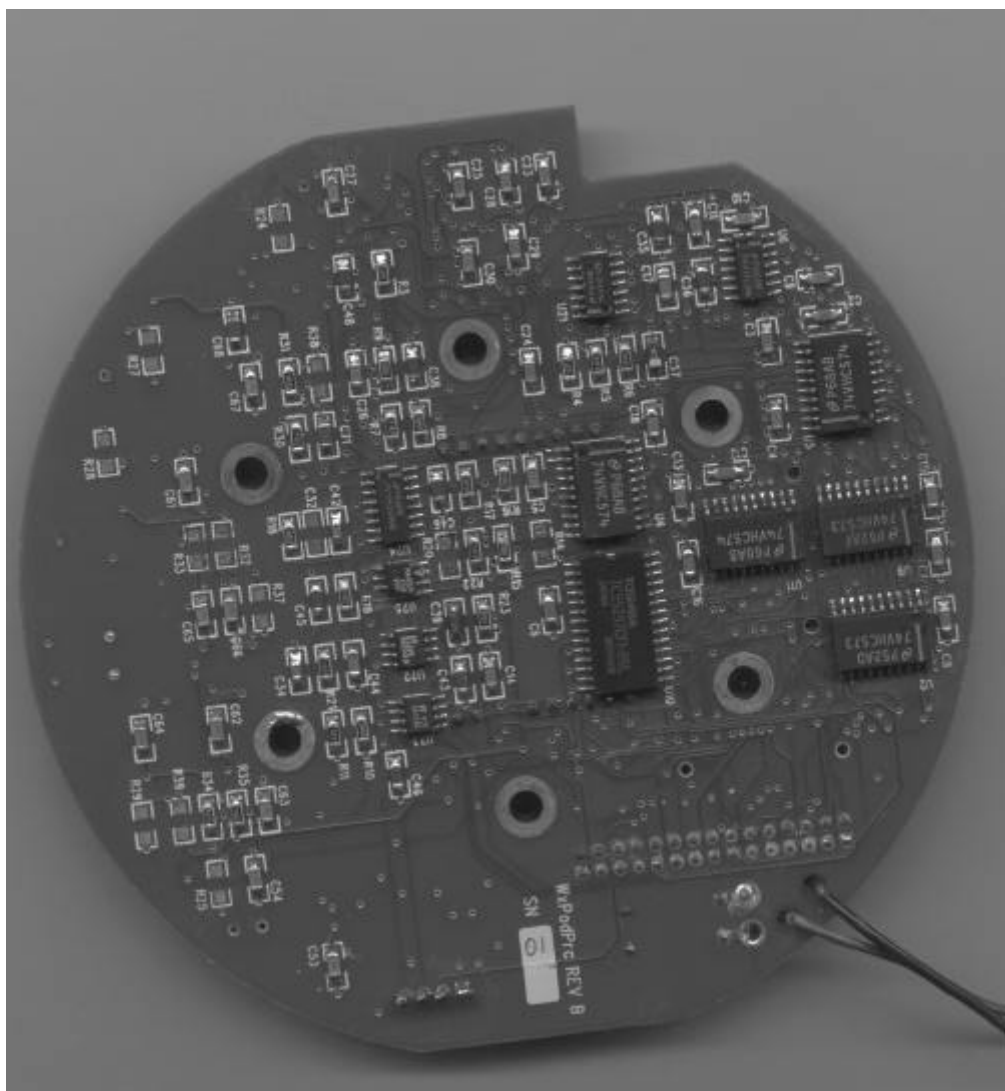
Part# 13-Serial# WxVisRX Rev. C component side



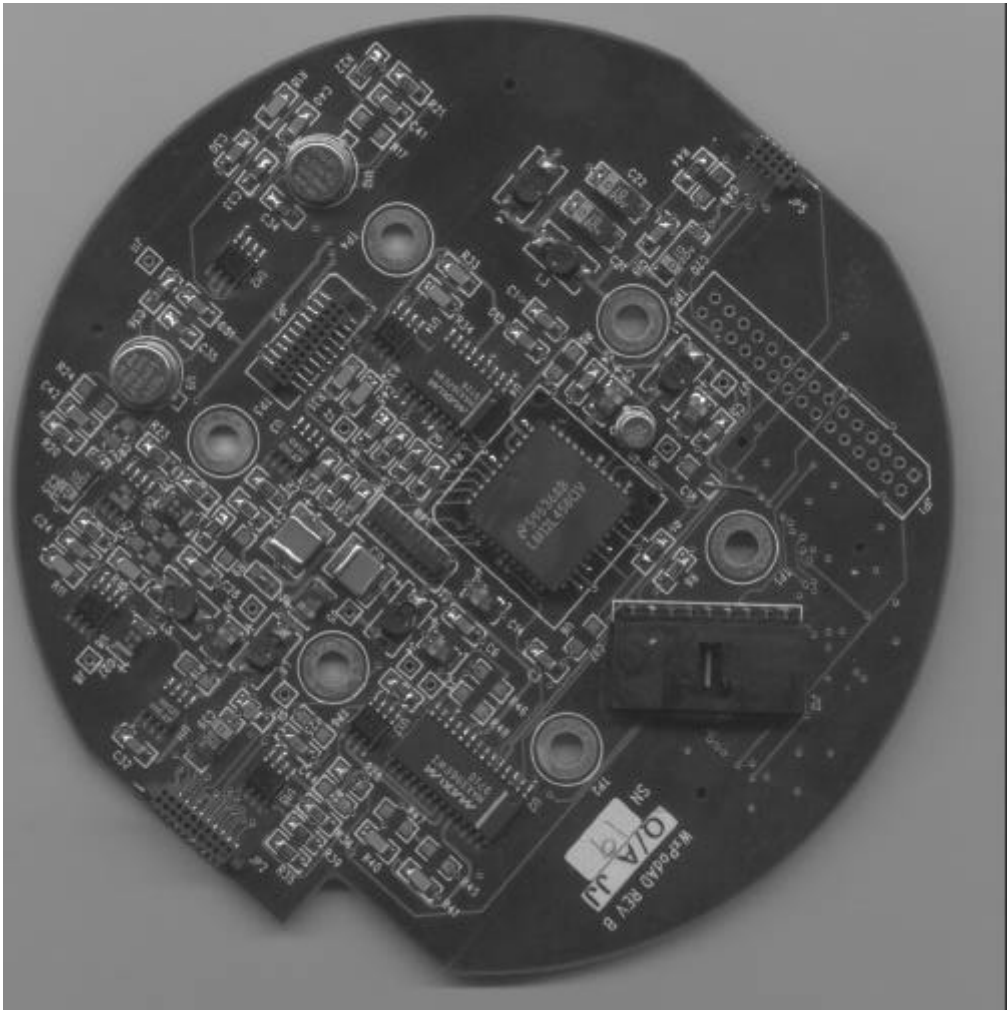
Part# 13-Serial# WxVisRX Rev. C solder side



Pod #10 component side

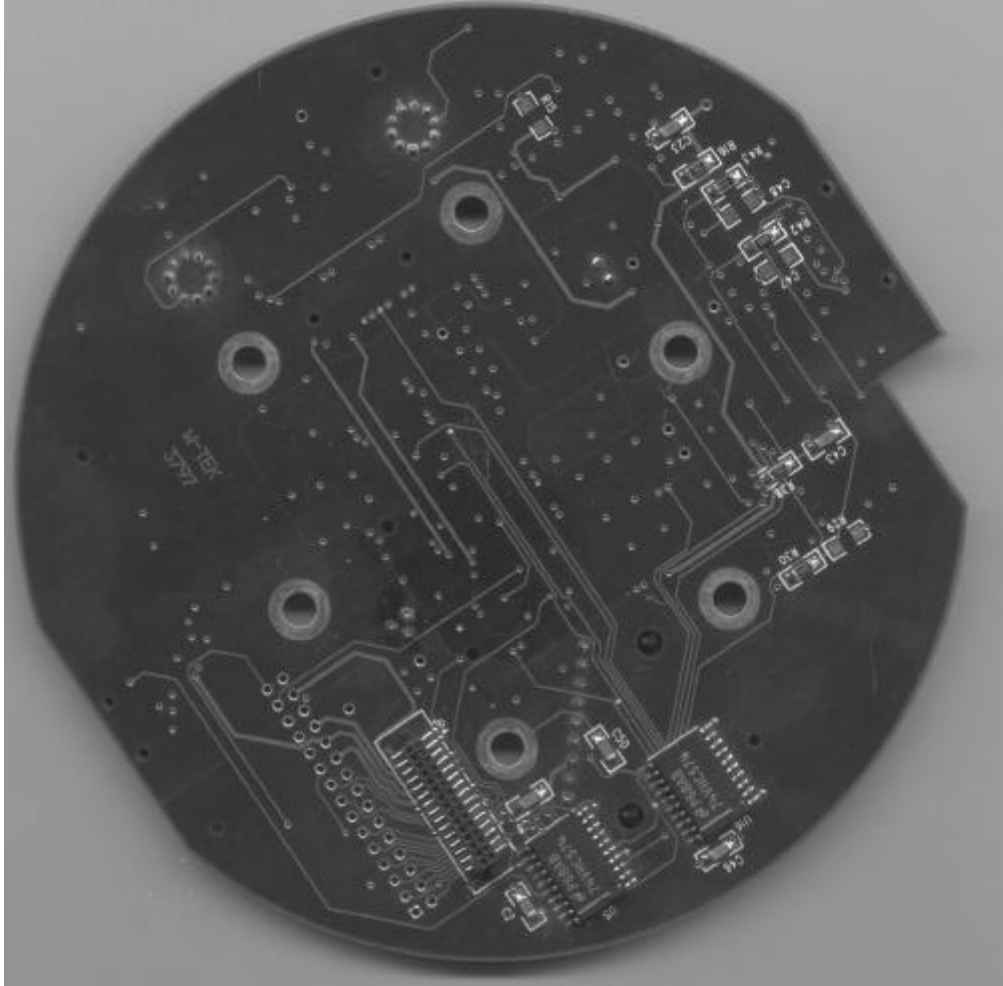


Pod #10 solder side

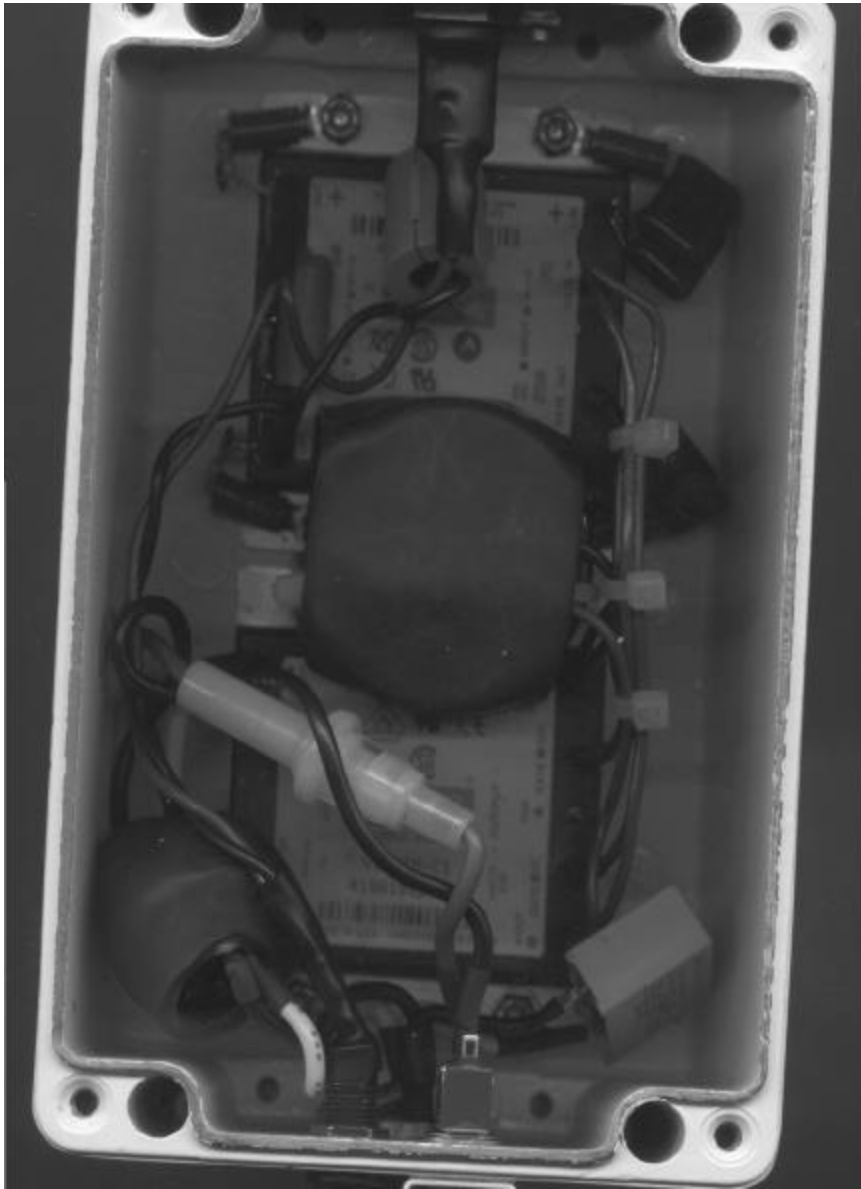


Pod #19 component side

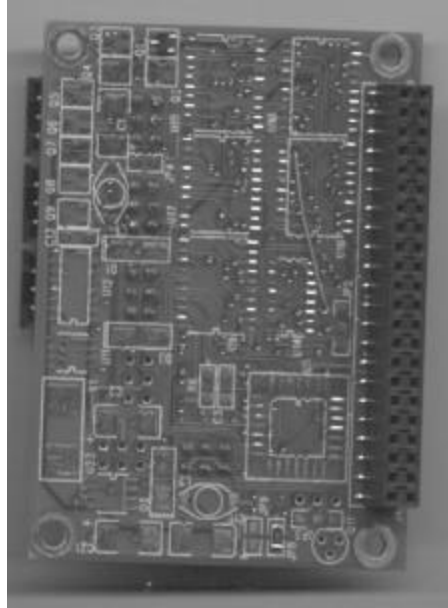




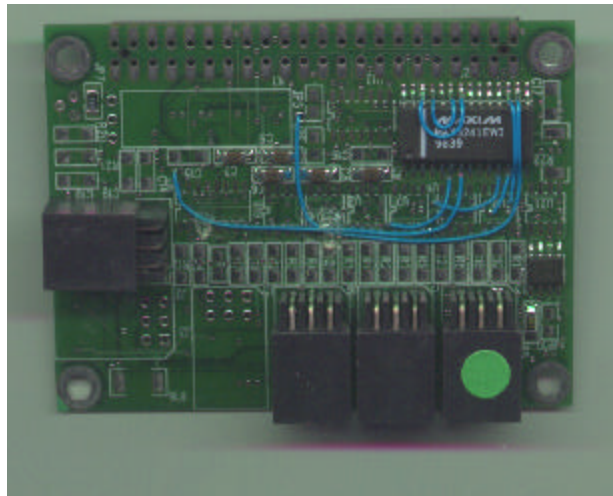
Pod #19 solder side



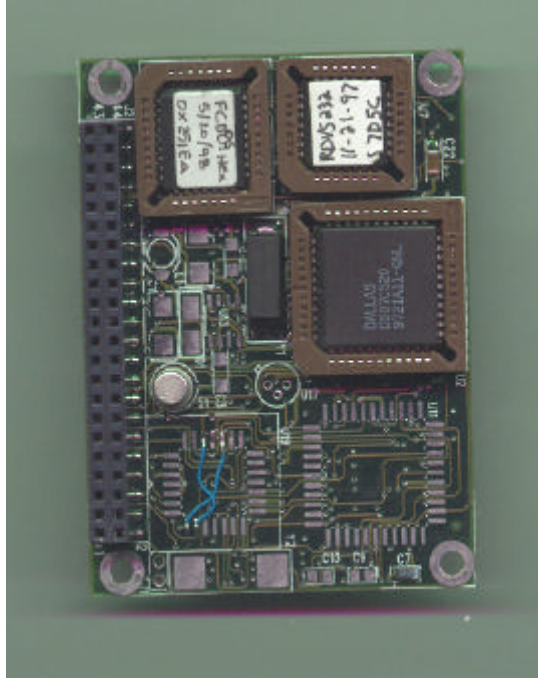
Power Supply



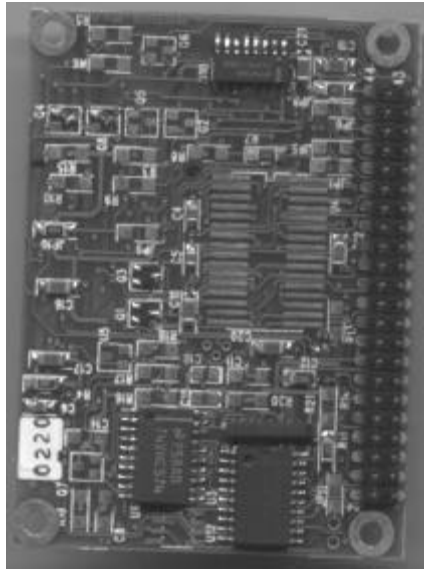
RFCIU pcb MAX3241 component side



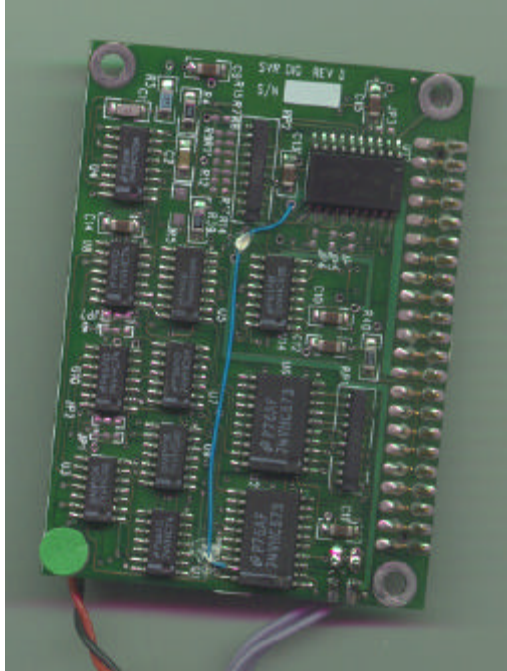
RFCIU pcb MAX3241 solder side



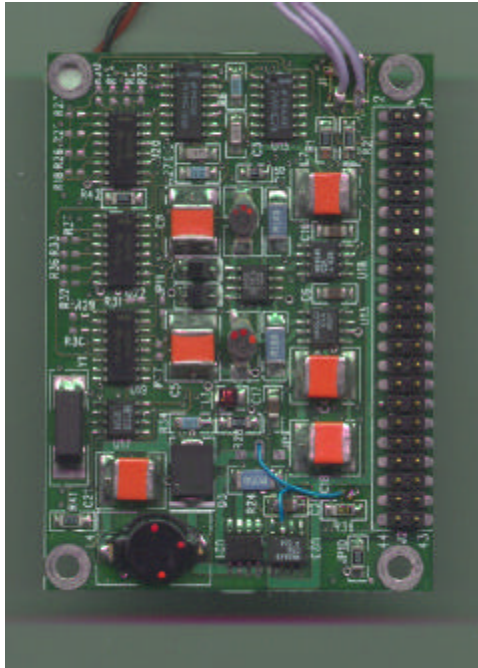
RFCIU pcb processor rev. C 0220 component side



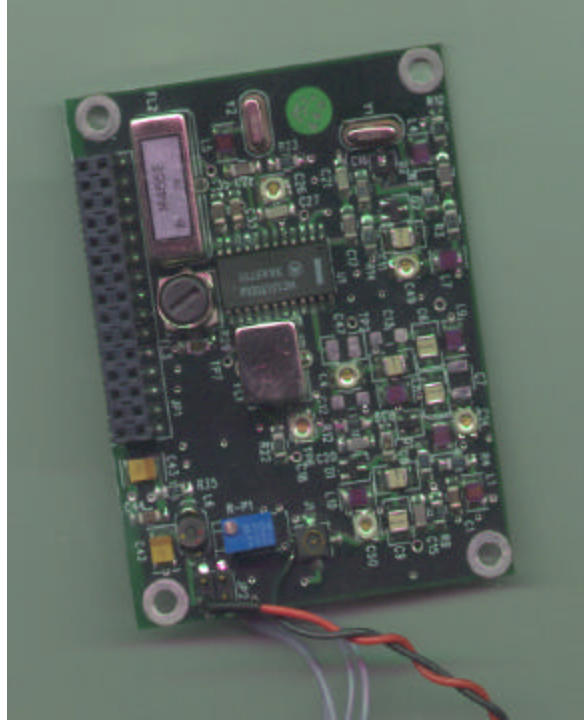
RFCIU pcb processor rev. C 0220 solder side



RFICU pcb SVR DIG Rev. D component side



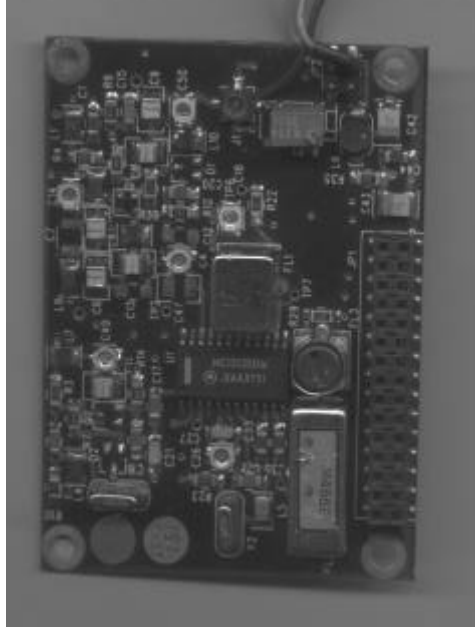
RFICU pcb SVR DIG Rev. D solder side



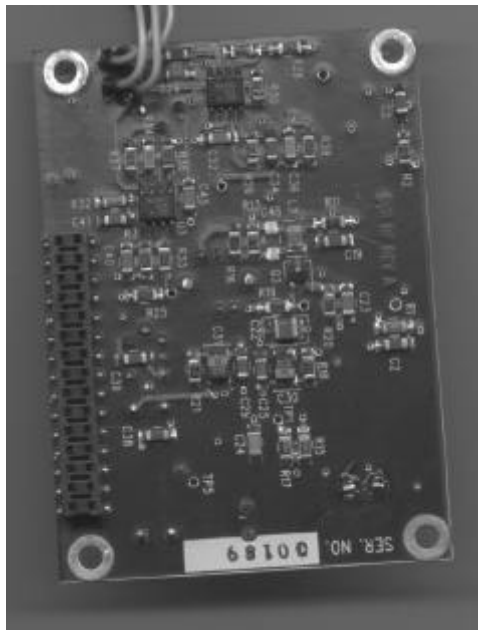
RFICU pcb SVR RF Rev. A 00186 component side



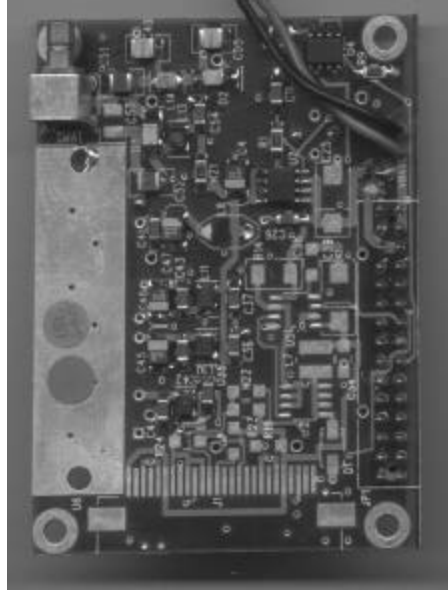
RFICU pcb SVR RF Rev. A 00186 solder side



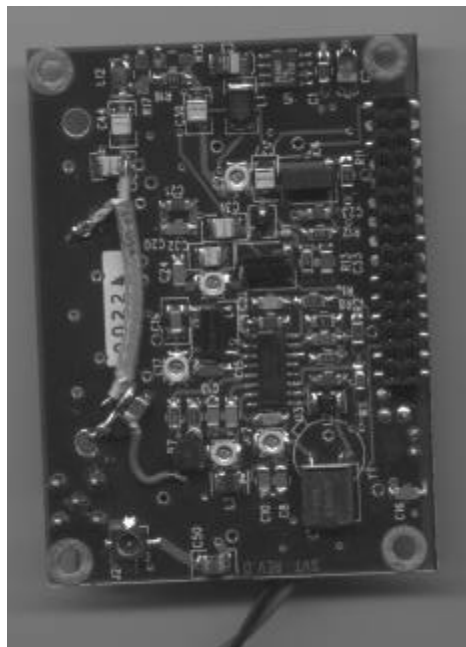
RFU pcb 00189 component side



RFU pcb 00189 solder side



RFU pcb SVT 00224 component side

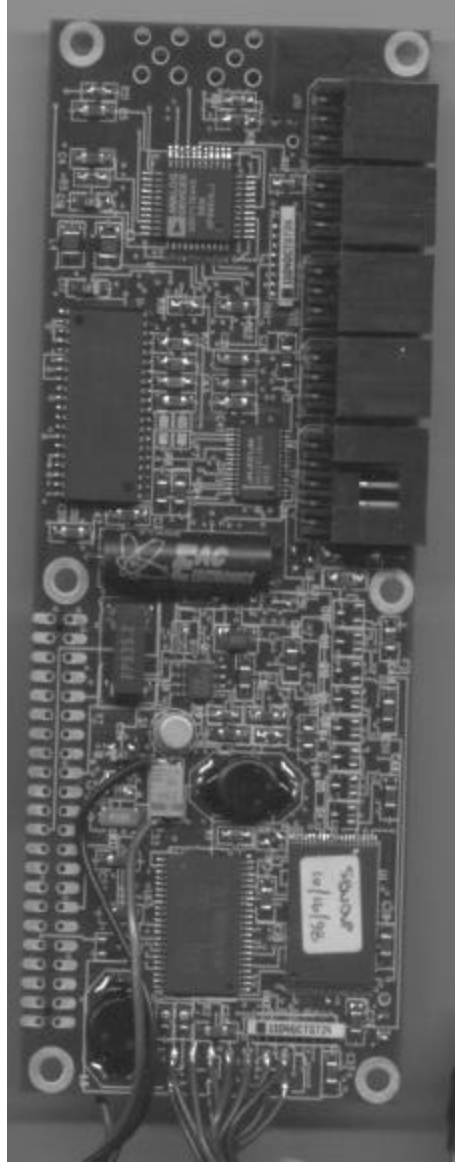


RFU pcb SVT 00224 solder side

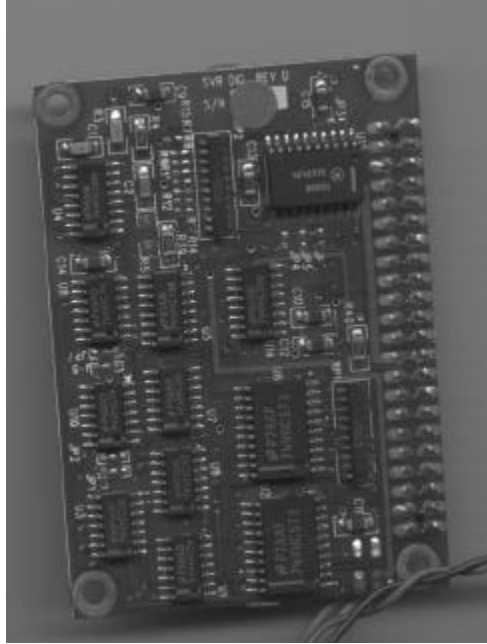




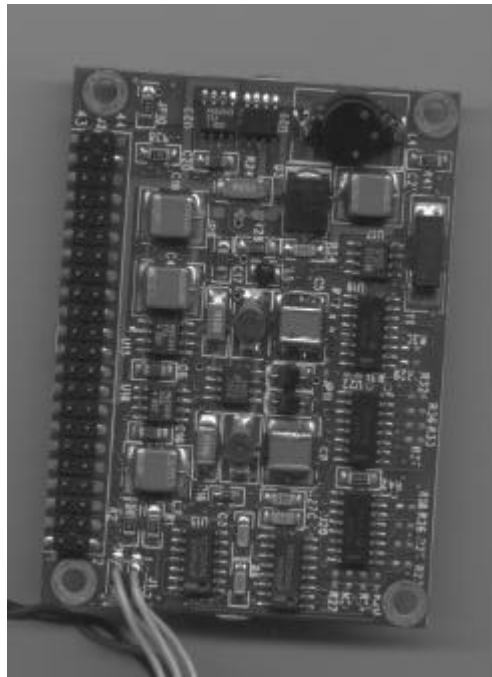
RFU pcb DSP uP Rev. B #011B component side



RFU pcb DSP uP Rev. B #011B solder side



RFU SVR Dig component side



RFU SVR Dig solder side