

Internal photos



TT1100 front-panel, rear-view, with Mainboard. -> PoE module removed



TT1100 front-panel, rear-view, with Mainboard. -> PoE module removed
-> RFID module removed



TT1100 front-panel, rear-view, with Mainboard. -> PoE module removed
-> RFID module removed
-> Reader carr. removed



TT1100 front-panel, rear-view, with Mainboard.

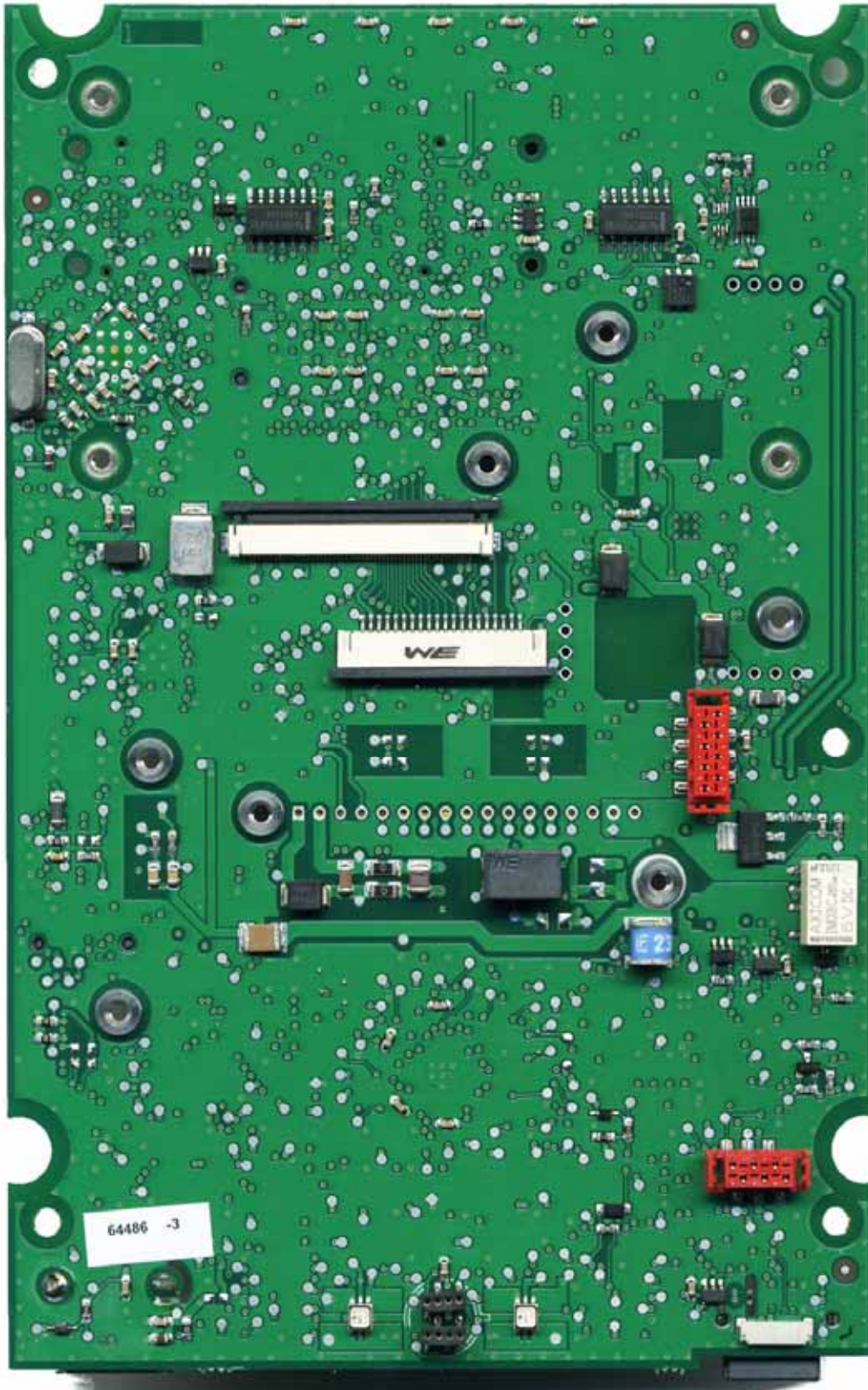
- > PoE module removed
- > RFID module removed
- > Reader carr. removed
- > ConnectorBoard removed



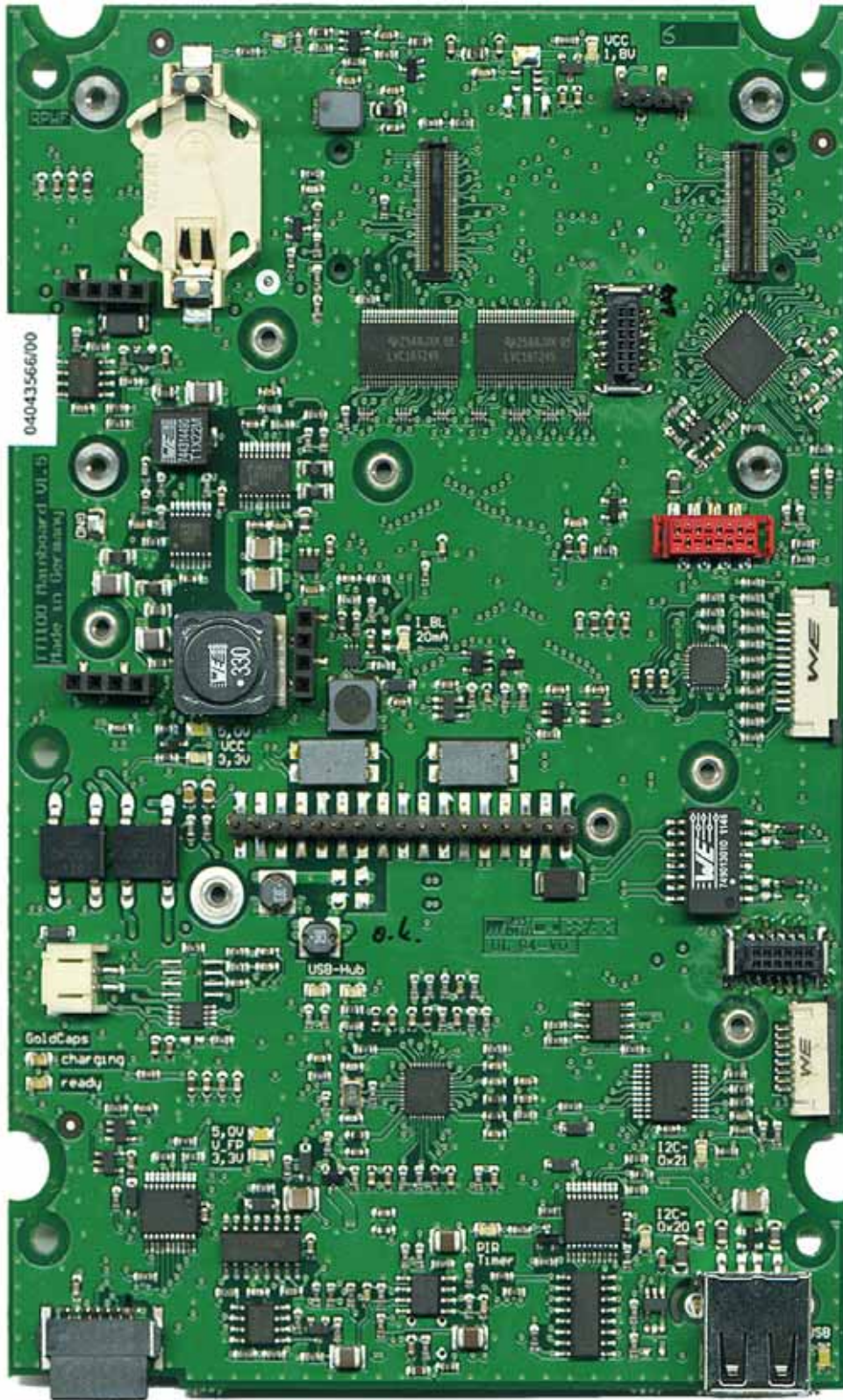
TT1100 front panel (rear view)



TT1100 front-panel, rear-view with Mainboard and all modules mounted



TT1100 Mainboard front-view (without LCD / Speaker)



TT1100 Mainboard rear-view (without any modules)

RFID-module carrier board



PoE Module



Connector-Board



125kHz RFID module
Type: HID MCM

RFID-module carrier board



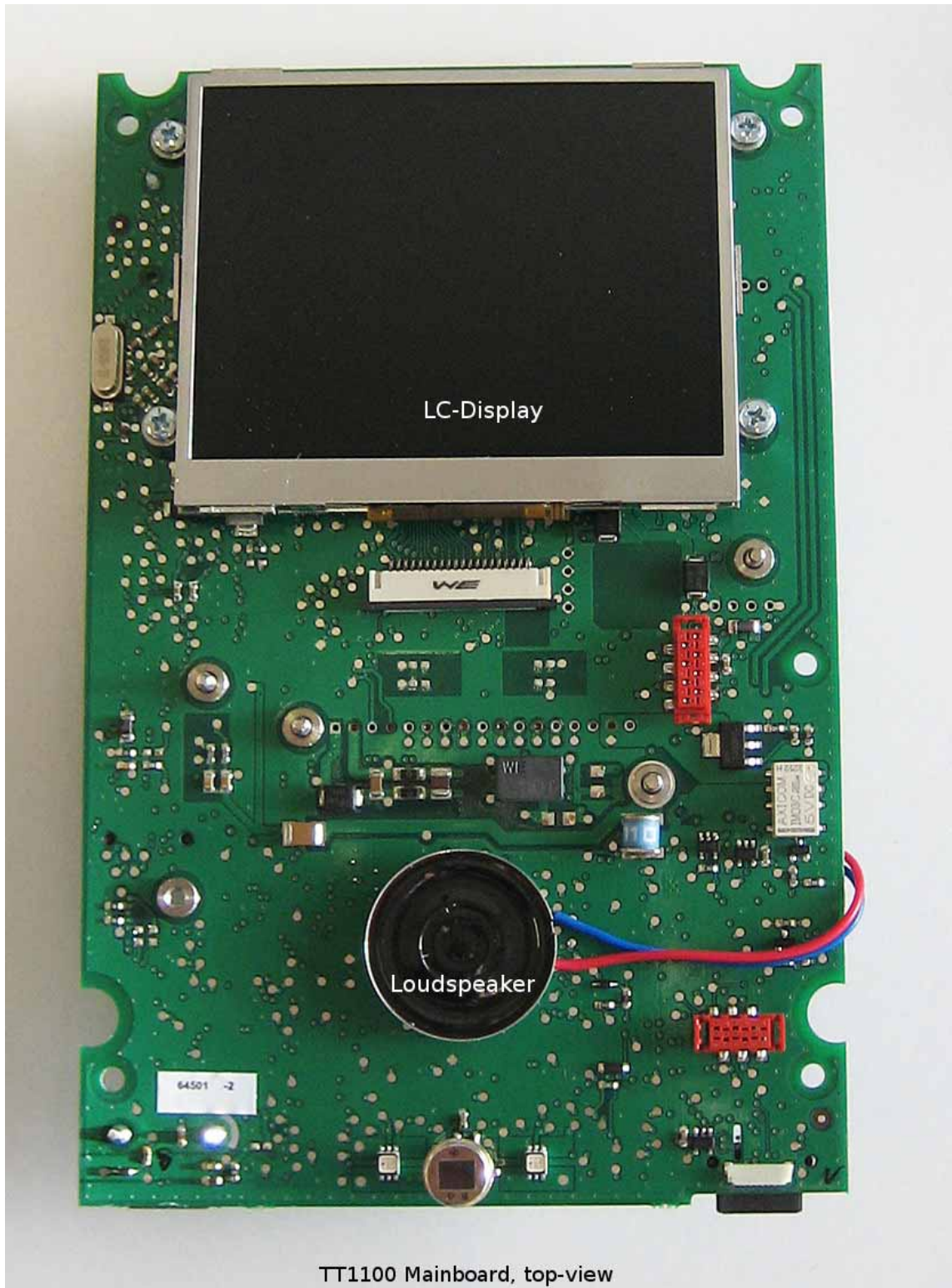
PoE Module



Connector-Board



125kHz RFID module
Type: HID MCM



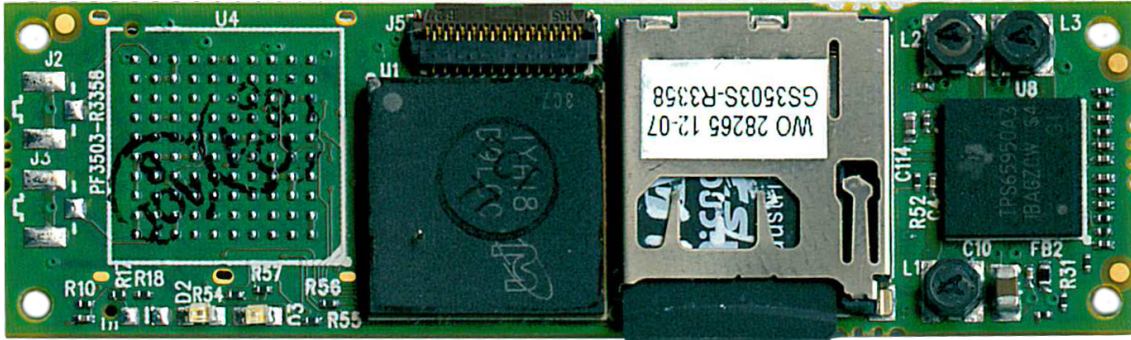
TT1100 Mainboard, top-view



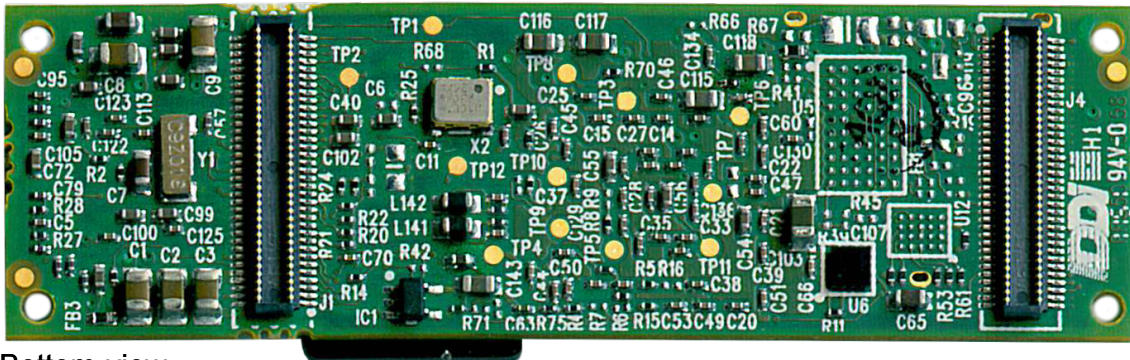
TT1100 Back-panel (The PCBs are mounted on the front-panel)

TT1100 CPU-Module

Overo® Sand COM / Type: GUM3503S



Top-view



Bottom-view

Manufacturer's product page:
<https://www.gumstix.com/store/app.php/products/261/>

TT1100 CPU-Module / photos	 KABA GmbH Mollenbachstr. 19 71229 Leonberg Germany	 A4-P
21.08.2013 V1.0 (initial revision)	Tel. +49 (7152) 93979 0 Fax +49 (7152) 93979 50 michailoglou@kaba.com	