

EUT: dormakaba access manager 9200-K7 FCC ID: NVI-DKAM9200-K7 FCC Title 47 CFR Part 15 Date of issue: 2020-11-13

**Annex acc. to FCC Title 47 CFR Part 15
relating to
dormakaba EAD GmbH
dormakaba access manager 9200-K7**



Annex no. 2 Internal Photographs

**Title 47 - Telecommunication
Part 15 - Radio Frequency Devices
Subpart C – Intentional Radiators
ANSI C63.4-2014
ANSI C63.10-2013**



Deutsche
Akkreditierungsstelle
D-PL-12053-01-03

EUT: dormakaba access manager 9200-K7 FCC ID: NVI-DKAM9200-K7 FCC Title 47 CFR Part 15 Date of issue: 2020-11-13

Registration-Unit 9000	
(The equipment shall be opened only after type testing is completed and photographs of the internal construction shall be made.)	
Internal construction Upper side / PCB Upper side of unit	Internal construction Lower side
	

EUT: dormakaba access FCC ID: NVI-DKAM9200-K7 FCC Title 47 CFR Part 15 Date of issue: 2020-11-13
manager 9200-K7

Registration-Unit 9004

(The equipment shall be opened only after type testing is completed and photographs of the internal construction shall be made.)

Internal construction Upper side



Internal construction Lower side



EUT: dormakaba access FCC ID: NVI-DKAM9200-K7 FCC Title 47 CFR Part 15 Date of issue: 2020-11-13
manager 9200-K7

PCB Upper side of unit

PCB Lower side of unit



EUT: dormakaba access FCC ID: NVI-DKAM9200-K7 FCC Title 47 CFR Part 15 Date of issue: 2020-11-13
manager 9200-K7

Registration-Unit 9003

(The equipment shall be opened only after type testing is completed and photographs of the internal construction shall be made.)

Internal construction Upper side / PCB Upper side of unit



Internal construction Lower side



PCB Lower side of unit



EUT: dormakaba access FCC ID: NVI-DKAM9200-K7 FCC Title 47 CFR Part 15 Date of issue: 2020-11-13
manager 9200-K7

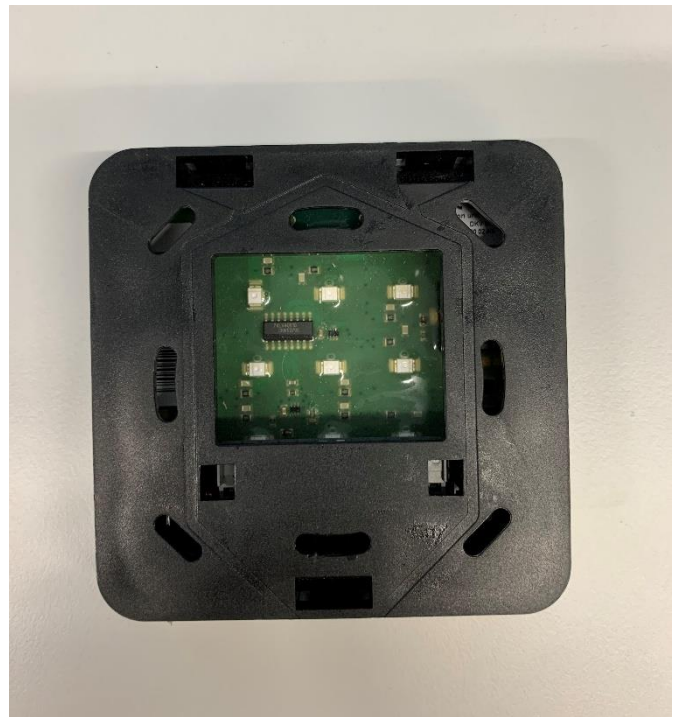
Registration-Unit 9002

(The equipment shall be opened only after type testing is completed and photographs of the internal construction shall be made.)

Internal construction Upper side



Internal construction Lower side



PCB Lower side of unit



EUT: dormakaba access manager 9200-K7 FCC ID: NVI-DKAM9200-K7 FCC Title 47 CFR Part 15 Date of issue: 2020-11-13

Registration-Unit 9001

(The equipment shall be opened only after type testing is completed and photographs of the internal construction shall be made.)

Internal construction Upper side

Internal construction Lower side



PCB Lower side of unit

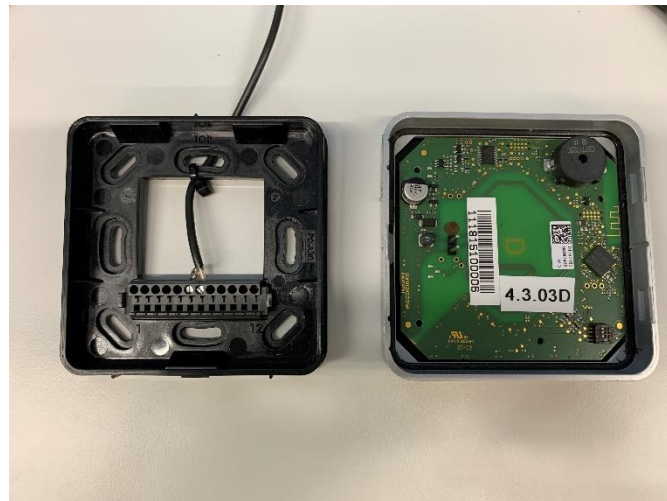


EUT: dormakaba access FCC ID: NVI-DKAM9200-K7 FCC Title 47 CFR Part 15 Date of issue: 2020-11-13
manager 9200-K7

Registration-Unit 9001-BLE

(The equipment shall be opened only after type testing is completed and photographs of the internal construction shall be made.)

Internal construction Upper side



Internal construction Lower side



PCB Upper side of unit

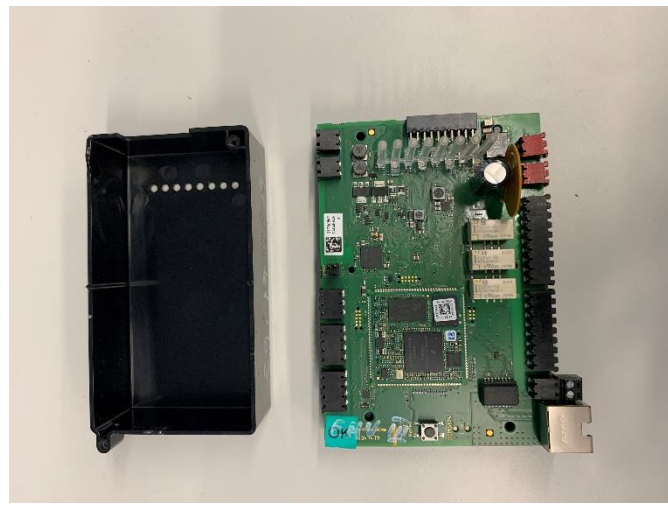


EUT: dormakaba access manager 9200-K7 FCC ID: NVI-DKAM9200-K7 FCC Title 47 CFR Part 15 Date of issue: 2020-11-13

Photographs of the test equipment (EUT)

(The equipment shall be opened only after type testing is completed and photographs of the internal construction shall be made.)

Internal construction Upper side



Internal construction Lower side



PCB Upper side of unit



PCB Lower side of unit

