

Internal Photos: Internal Lock



Internal Photos: Internal Lock



PROGRAMMING INSTRUCTIONS



READY

- Press program button below once to enter the 1st code & twice for the 2nd code
 - Enter code on exterior keypad
 - Press on exterior keypad to set code
- LED Keypad
Auto Lock
Auto Reopen
Follow Program



Internal Photos: Internal Lock



Internal Photos: Internal Lock



Internal Photos: Internal Lock



Internal Photos: Internal Lock



Internal Photos: Internal Lock



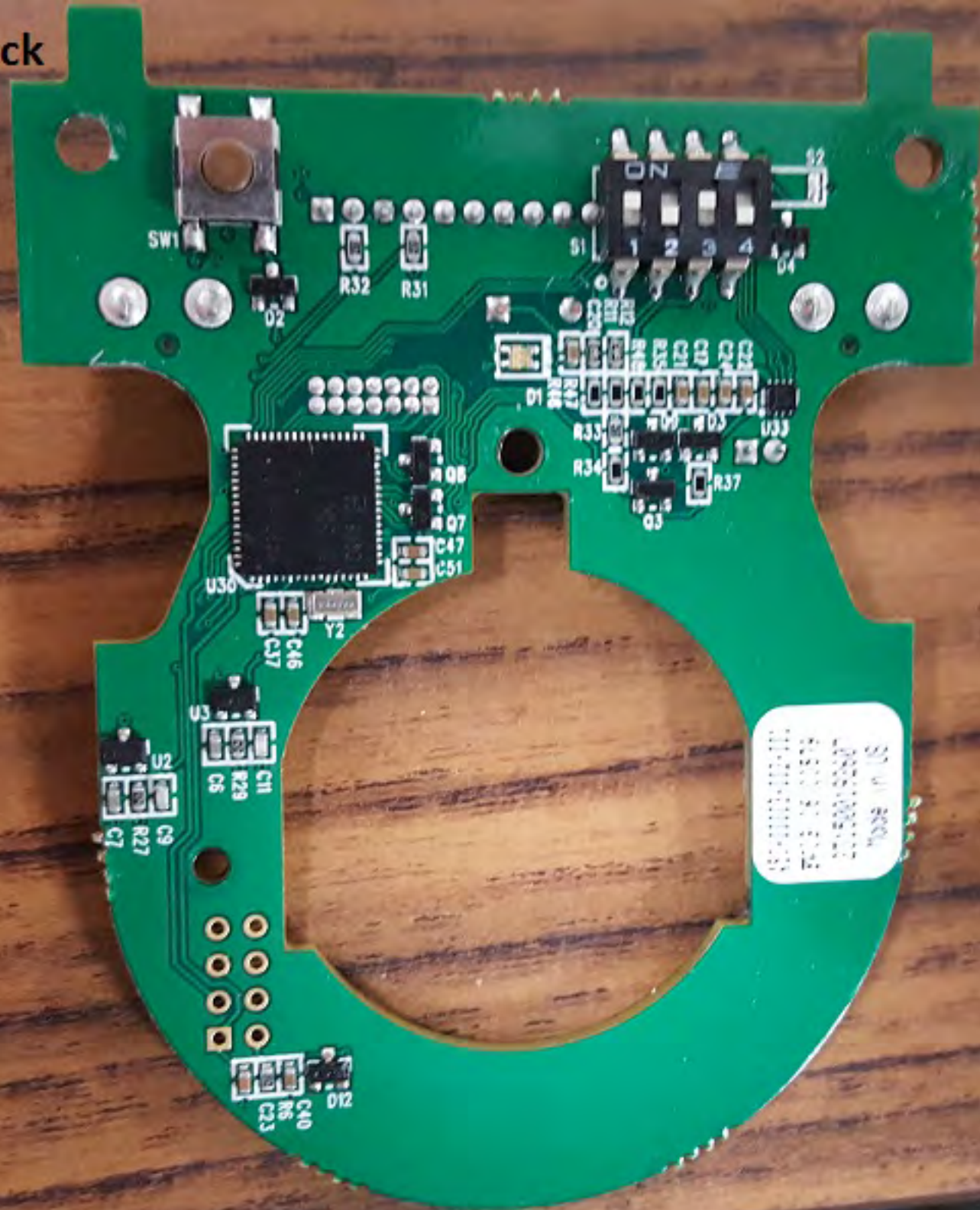


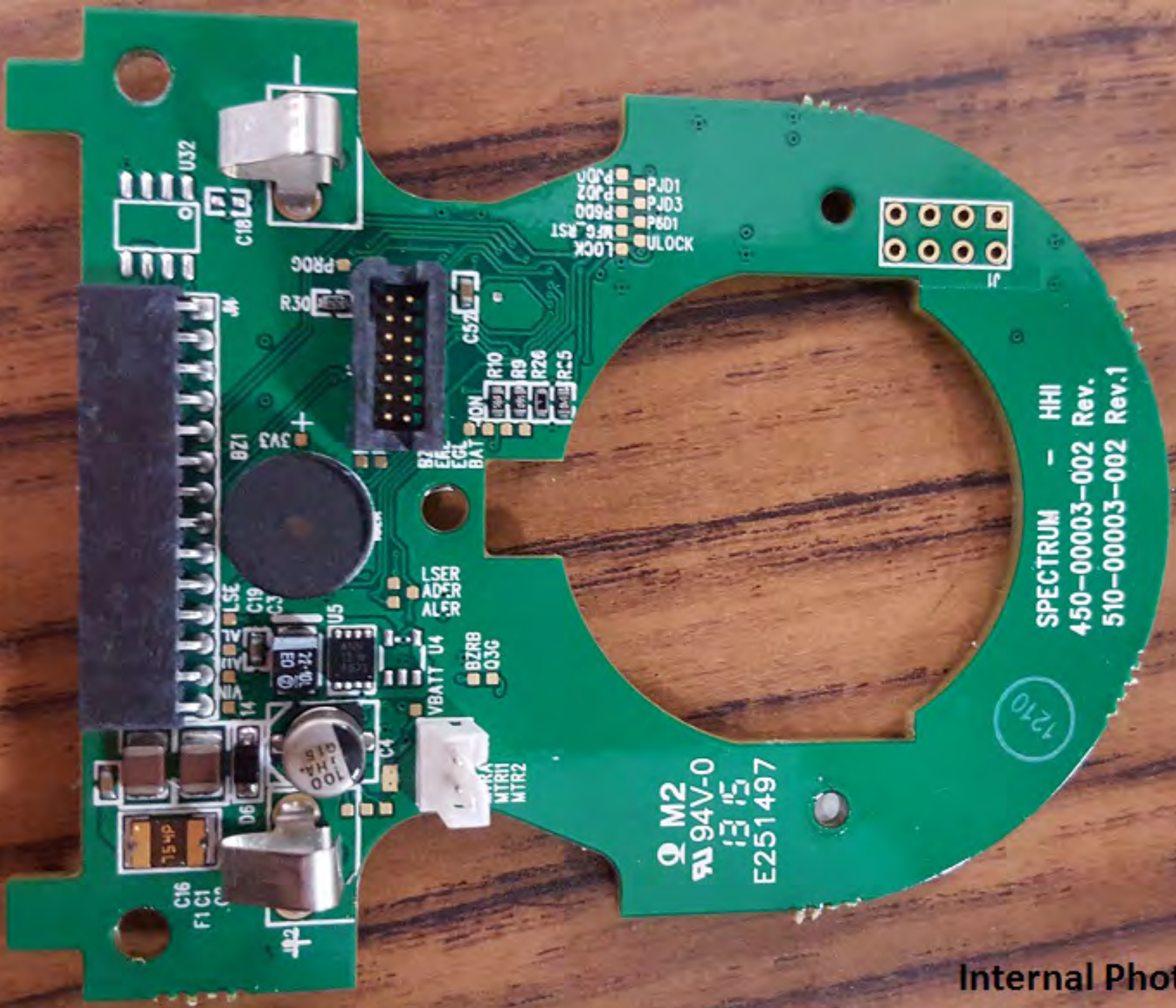
Internal Photos: Internal Lock



Internal Photos: Internal Lock

Internal Photos: Internal Lock





M2
94V-0
1315
E251497

1210

SPECTRUM - HHI
450-00003-002 Rev.
510-00003-002 Rev.1

LOCK
MFG. RST
100P
P601
P600
P602
CORP
PJ01
PJ02
PJ03
PJ04

R10
R9
R26
R5

PROC

BZ1

L5ER
AD5R
AL5R

BZRB
Q3G

MTR1
MTR2

C16
F1 C1

U32

C18

R30

C52

C19

U5

VBATT U4

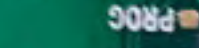
E0

100
1HA
10

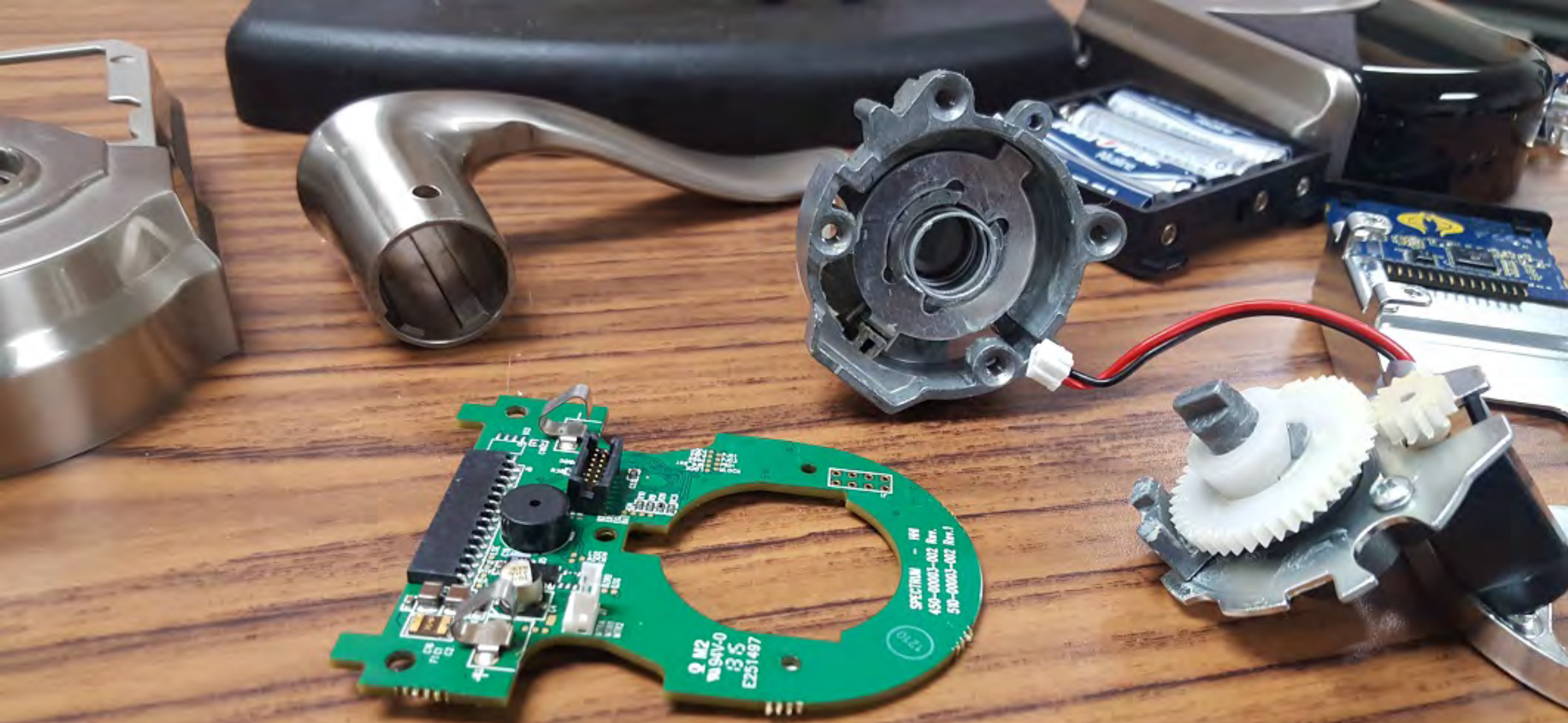
754P

D6

F1 C1



Internal Photos: Internal Lock



Internal Photos: Internal Lock

Internal Photos: Internal Lock





Internal Photos: External Lock



Internal Photos: External Lock



Internal Photos: External Lock



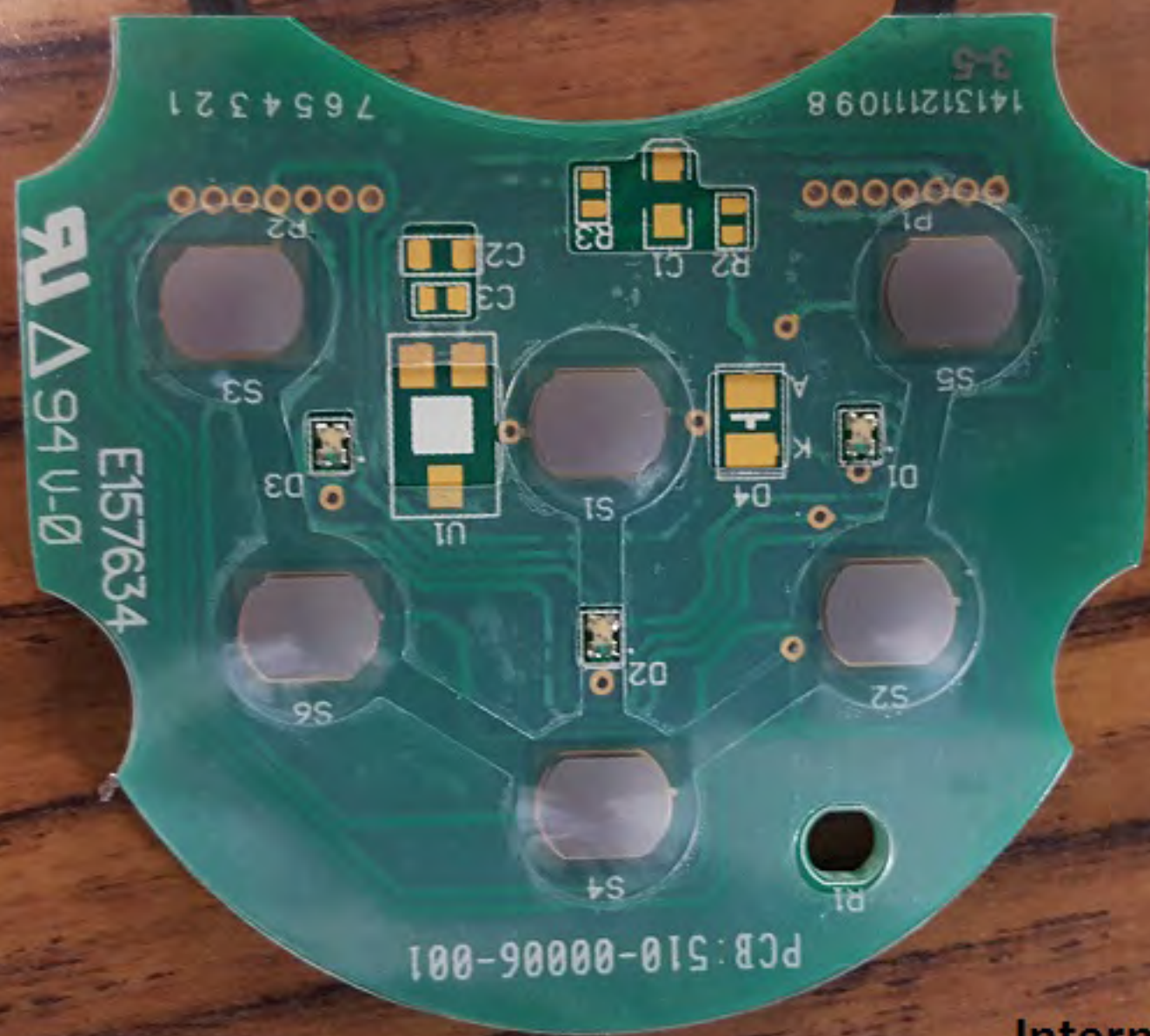
Internal Photos: External Lock



Internal Photos: External Lock

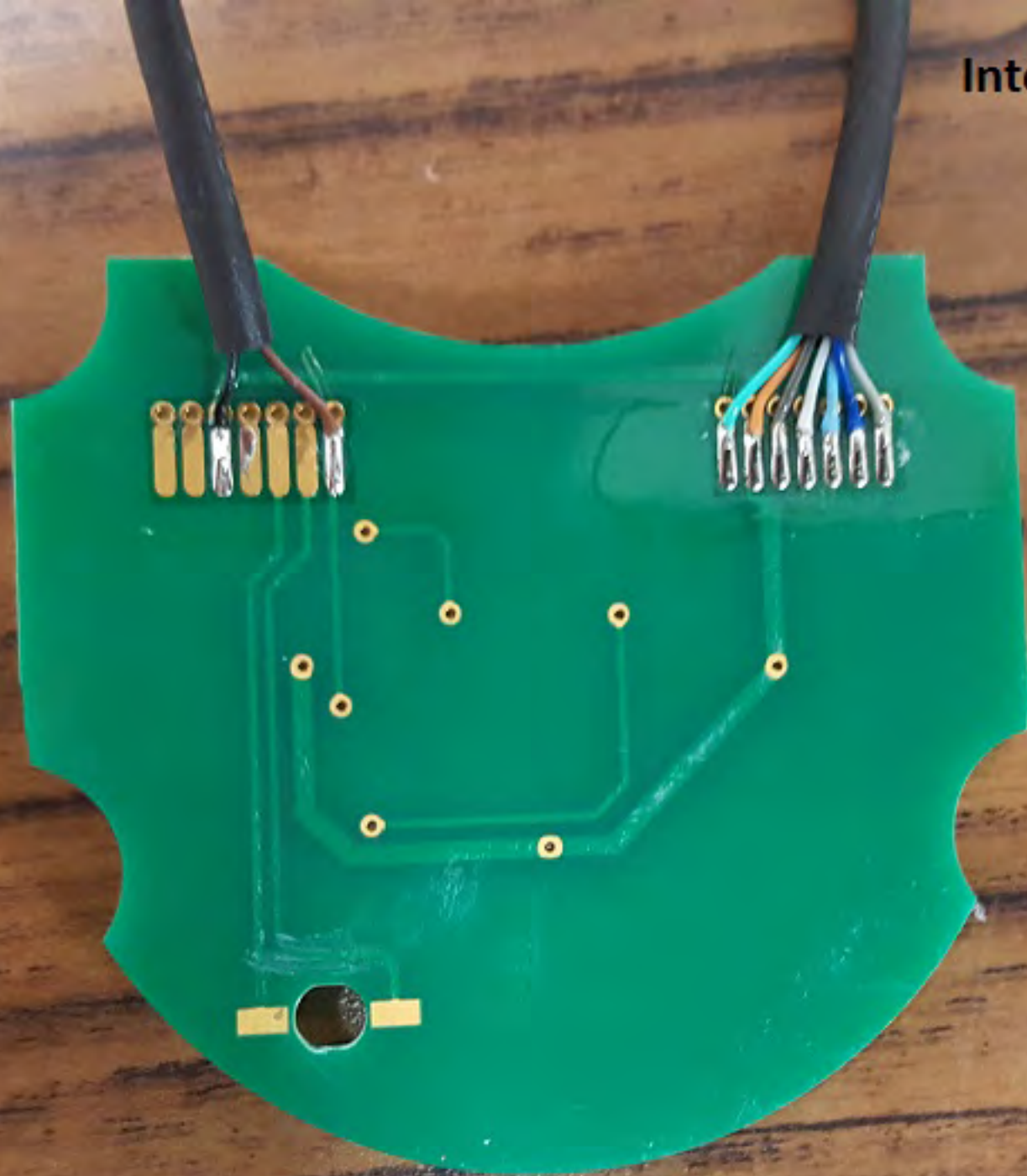
Internal Photos: External Lock



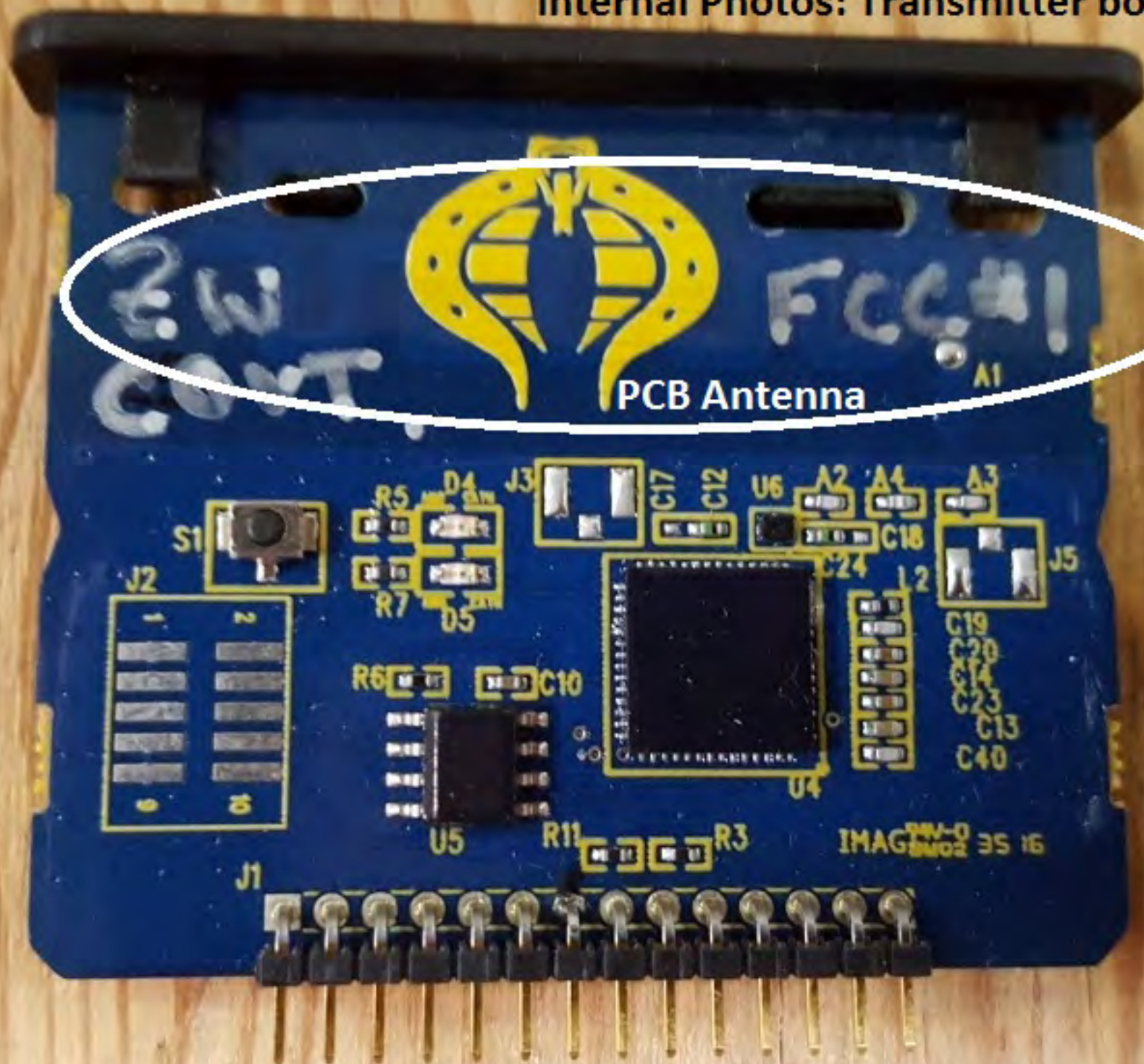


Internal Photos: External Lock

Internal Photos: External Lock



Internal Photos: Transmitter board



Internal Photos: Transmitter Board

