

8/10/2017

Compatible Electronics TCB  
114 Olinda Drive  
Brea, California 92823

**Subject: FCC LABEL, LOCATION, AND USER MANUAL STATEMENT**

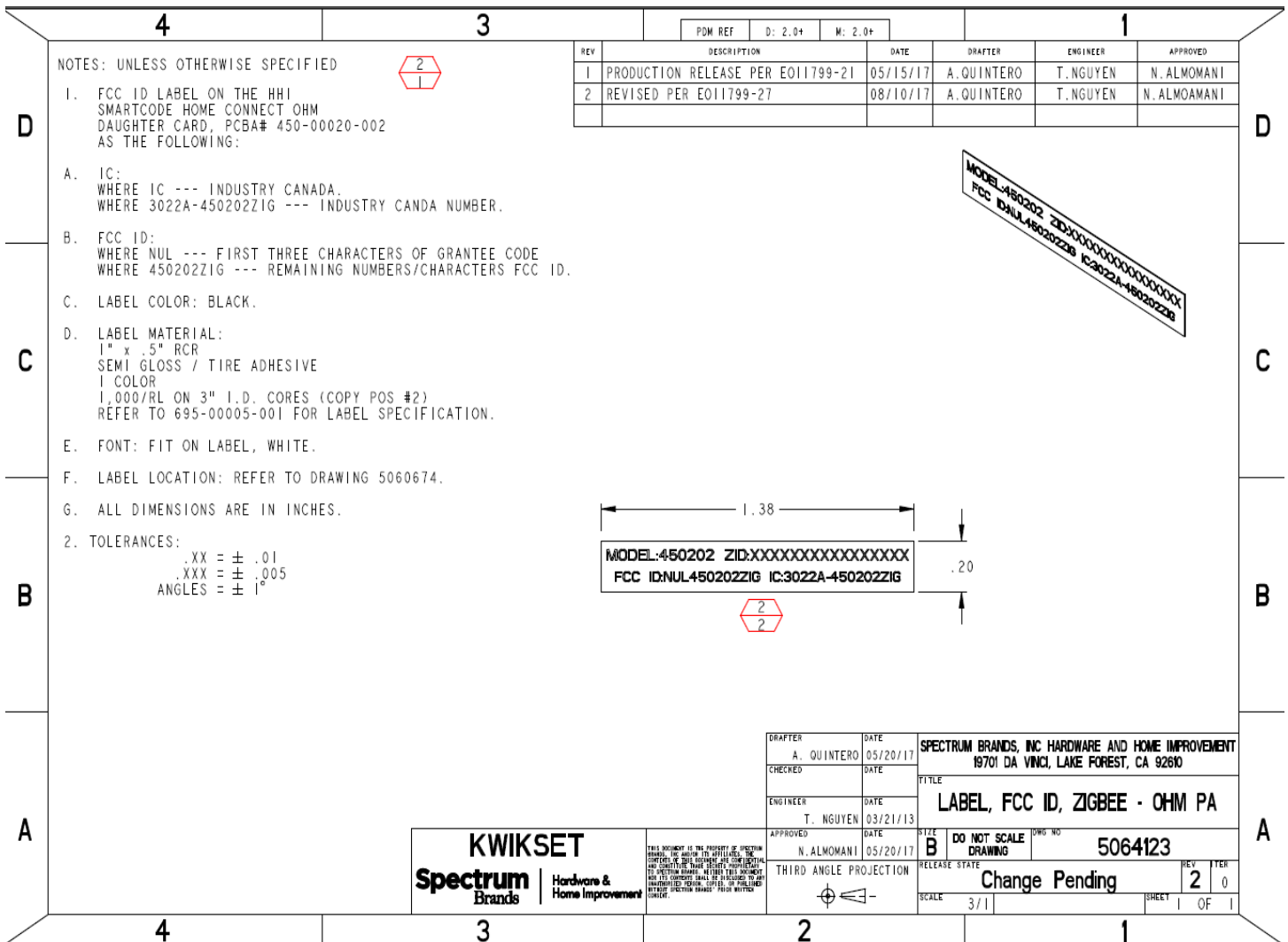


Figure 1. FCC Label

3/1/2018

Compatible Electronics TCB  
114 Olinda Drive  
Brea, California 92823

**Subject: FCC LABEL, LOCATION, for Models 954**



The batteries are not installed when the unit is sold to the end customer.

The customer will need to install the batteries into the unit.

The unit looks like this prior to the customer installing the batteries.

Since this requires removing the cover with the door handle, the customer will be able to see the FCC ID on the RF Module itself.

**Facestock(60# Ultra White Semigloss C1S ):** A premium coated one side stock with outstanding ink receptivity and print characteristics. It also offers good flexibility and high internal strength for ease in converting. This face offers a 90% Brightness and an 88% opacity.

<b>Type:</b>	Paper	<b>Basis Weight:</b>	60 lb/ream		<b>Federal Regulation Approval</b>	
<b>Caliper:</b>	3.20 mil	<b>Tensile:</b>	MD: 28 lb/in	CD: 15 lb/in	<b>Heavy Metals:</b>	Yes
<b>Opacity:</b>	88.5 %	<b>Tear:</b>	MD: 40 grams	CD: 50 grams	<b>Toy Safety:</b>	Yes
<b>Brightness:</b>	90 %	<b>Elongation:</b>	MD: N/A	CD: N/A	<b>Indirect Food:</b>	Yes
					<b>Direct Food:</b>	No

**Adhesive(TL250 ):** An outstanding general purpose permanent adhesive which has high initial tack and high ultimate adhesion. It is used for tire label and many other difficult to label substrates.

<b>Coat Weight:</b>	Heavy	<b>Federal Regulation Approval</b>		<b>Typical Adhesion Values</b>	
<b>Adhesive Type:</b>	Permanent Latex	<b>Heavy Metals:</b>	Yes	<b>Stainless Steel:</b>	
<b>Shear:</b>	80 minutes	<b>Toy Safety:</b>	Yes	180° Peel:	8.3 lb/in
<b>Minimum Application Temperature:</b>	25° F	<b>Indirect Food:</b>	Yes	Loop Tack:	5.40 lb/in <sup>2</sup>
<b>Service Temperature:</b>	-65° F to 220° F	<b>Direct Food:</b>	No	<b>Glass:</b>	
<b>ACTS Approval:</b>	Yes			180° Peel:	6.7 lb/in
				<b>Polyethylene:</b>	
				180° Peel:	7.5 lb/in
				<b>Corrugated:</b>	
				180° Peel:	8.3 lb/in
				<b>Painted Metal:</b>	
				180° Peel:	8.5 lb/in

**Release Liner(50#SCK L-2 ):** Supercalendered Kraft (SCK) liner which has been silicone coated one side to give a controlled release. This paper has a smooth, caliper consistent surface. Due to its high internal strength it will withstand all conventional processing operations including die-cutting, butt cutting, line scoring and dispensing.

<b>Basis Weight:</b>	50 lb/ream	<b>Tensile:</b>	MD: 43 lb/in	CD: 27 lb/in
<b>Caliper:</b>	3.2 mil	<b>Tear:</b>	MD: 44 grams	CD: 48 grams

**WARRANTY:** All data obtained through ASTM standards and are typical and should not be used for specification purposes. Because of the variety of possible uses, the buyer should test the suitability of each intended use. The buyer assumes all risks in connection with such use. Technicote will not be liable for damages in excess of the purchase price of products or for incidental or consequential damages. **TECHNICOTE** warrants the products to be free from defects in material and workmanship. Should any failure to conform to this warranty appear within one year after the initial date of shipment (unless otherwise stated), **TECHNICOTE** shall, upon notification thereof and substantiation that the products have been stored and applied in accordance with **TECHNICOTE'S** standards, correct such defects by suitable repair or replacement without charge at **TECHNICOTE'S** plant or at the location of the products (at **TECHNICOTE'S** election); provided, however, if **TECHNICOTE** determines that repair or replacement is not commercially practical, **TECHNICOTE** shall issue a credit in favor of **BUYER** in an amount not to exceed the purchase price of the products.