

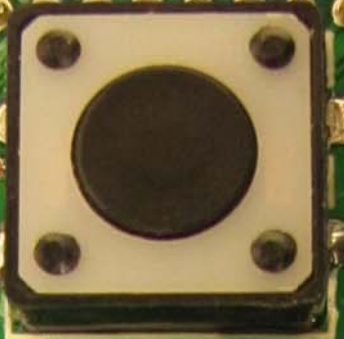


R732

Control panel with a square button, a numeric keypad (0-9), a circular dial, and a switch labeled "ON OFF". Below the switch is the text "61054 / 01".

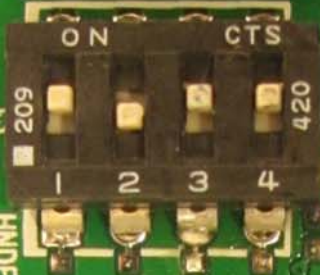


J4P1 SDAT SCLK TXD1 RXD1 INT1 J4P12 VBATT



VIN PROG

SW1



MTR1 MTR2

OK1 OK1R

BZR LSER P2D7 OE1 P3B2 P2D2

BZRB 3V3

HNDL AUDE ALKE LSTE

IGLR IRLR

MTRC3 Q2C Q1G MTRC2

LCK LEFT LCK_RITE

MTRC0 MTRC1 PUD0 PUD1 ACER HNDR PJD1 PJD3 IRL 3V3TI IGL PJD0 PJD2 UNLK



SPECTRUM BRANDS-HHI
450-00017-001 Rev.
510-00017-001 Rev.1

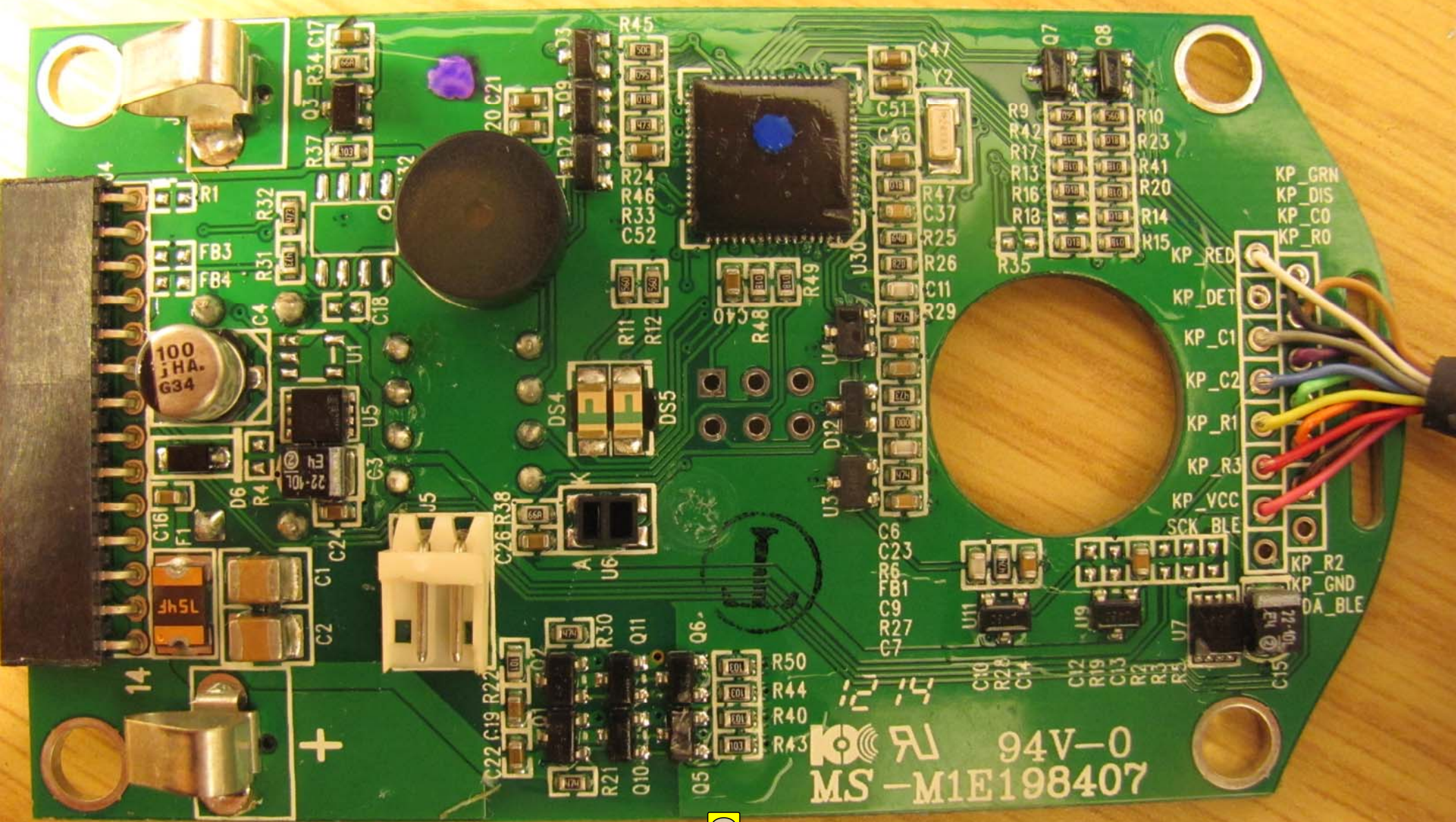
BAT_MON MFG_RST ALER R3 R03 R02 R01 TXD0 R00 R01 R02 R03 R04 R05 R06 R07 R08 R09 R10 R11 R12 R13 R14 R15 R16 R17 R18 R19 R20 R21 R22 R23 R24 R25 R26 R27 R28 R29 R30 R31 R32 R33 R34 R35 R36 R37 R38 R39 R40 R41 R42 R43 R44 R45 R46 R47 R48 R49 R50 R51 R52 R53 R54 R55 R56 R57 R58 R59 R60 R61 R62 R63 R64 R65 R66 R67 R68 R69 R70 R71 R72 R73 R74 R75 R76 R77 R78 R79 R80 R81 R82 R83 R84 R85 R86 R87 R88 R89 R90 R91 R92 R93 R94 R95 R96 R97 R98 R99

RXD0



61280-002
450-00017-004-001
P/W Rev 03.06 0723
381400000850
Made in USA

RLEB KP0T KPDS GREB



MS 94V-0
-M1E198407

KP_GRN
KP_DIS
KP_CO
KP_RO
KP_RED
KP_DET
KP_C1
KP_C2
KP_R1
KP_R3
KP_VCC
SCK_BLE
KP_R2
KP_GND
DA_BLE

