

0
-5



0
-05

PROGRAMMING INSTRUCTIONS  **READY**

SMARTCODE

- Press program button below once to enter the 1st code & twice for the 2nd code
- Enter code on exterior keypad
- Press  on exterior keypad to set code

Future Features:
- Multi-Sensor
- Auto-Lock
- LED Notification

PROGRAM BUTTON  



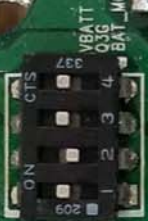




SPECTRUM BRANDS-HHI
450-00002-005/-006 Rev.
510-00002-005 Rev.1.1

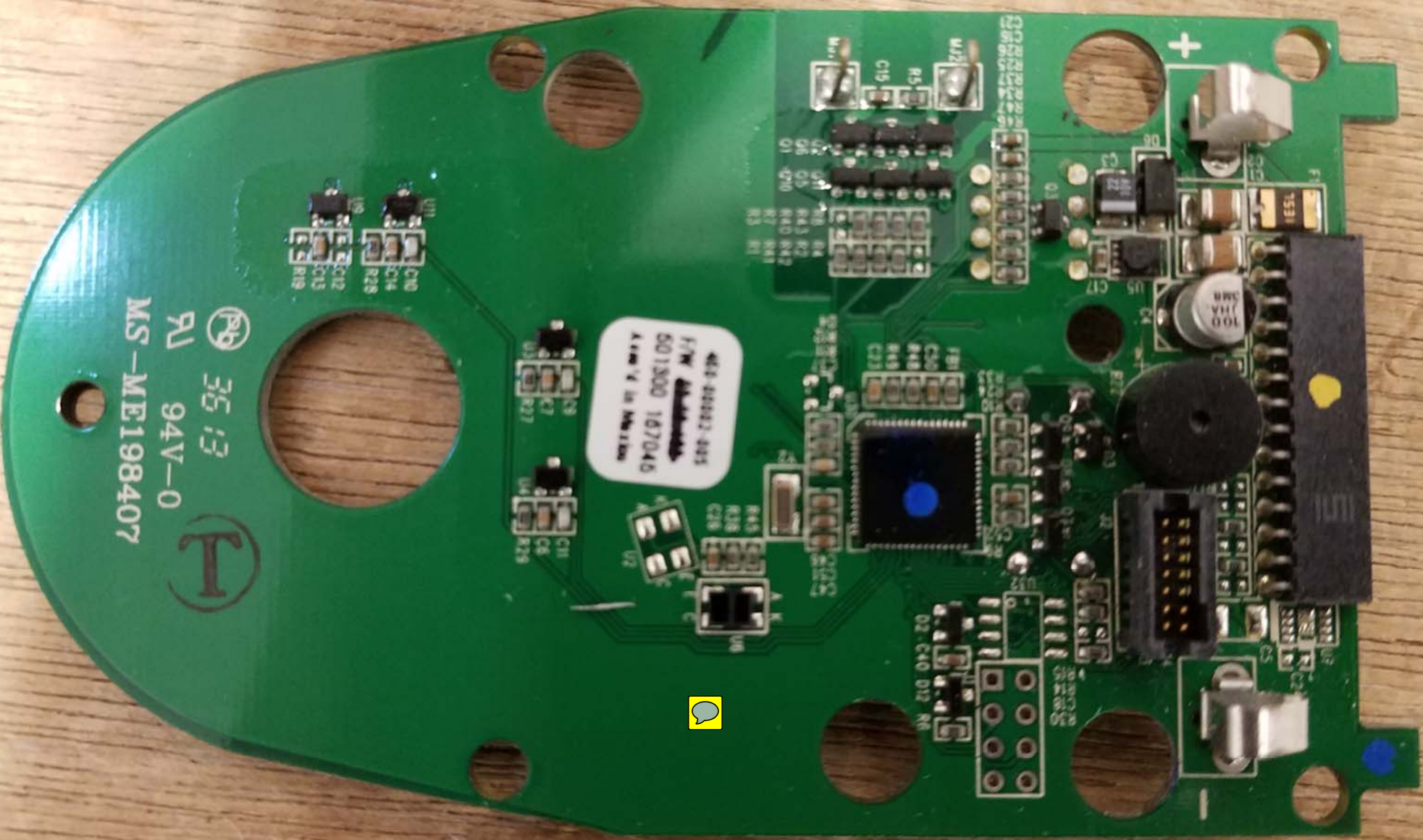
CT1
LN1
BSL
RXD
TXD
SC8
SCL
S08
S0A
PST

100
100
100
ALEB



VIN
S1
S2
P3D2
MTRC1
MTRC0
MTRC3
MTRC2
LSER
ALER
PUD0
PUD1
ADER
PJD0
PJD2
PJD3
MFG_RST
LSER
D1
IRL
IGL
IRLR
IGLR
OKR
OKI

OE1
EQL
PROG
LCK_LEFT
LCK_RIGHT
PCLK
PDAT



3513
94V-0
MS-ME198407



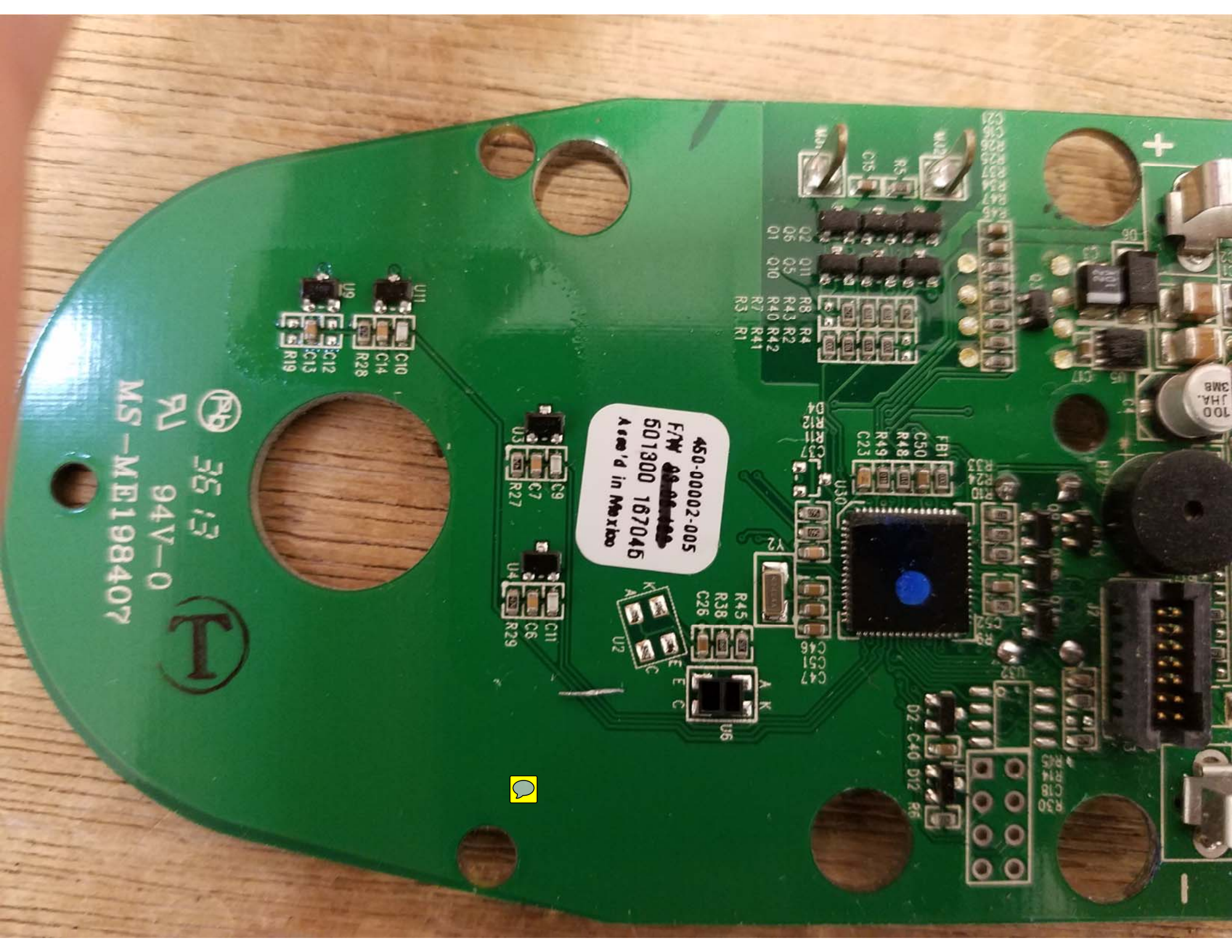
483-88882-885
F/W
5013000 167046
ARM V6 in Motion

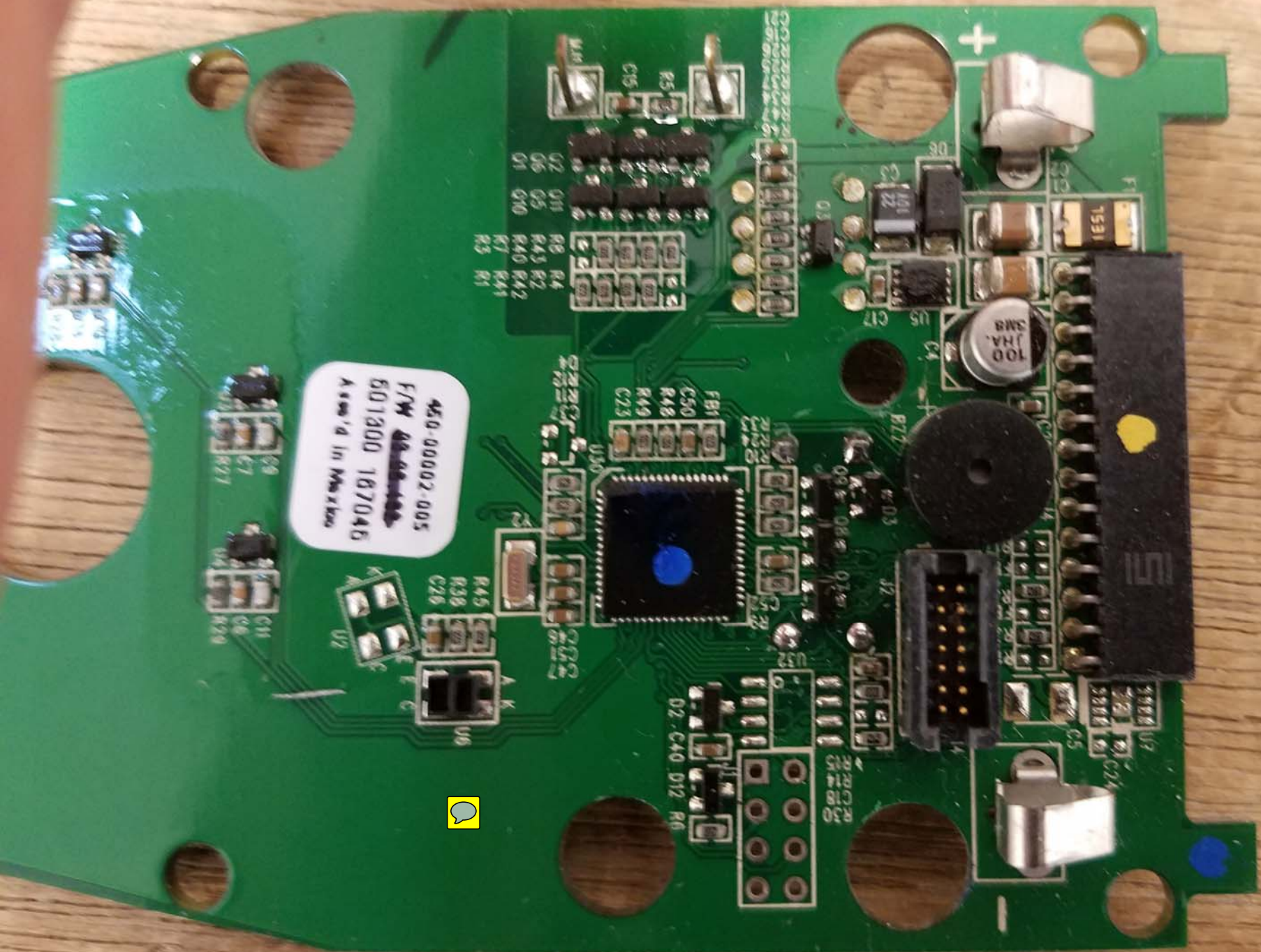


3513
94V-0
MS-ME198407



450-00002-005
F/W ~~08-00-100~~
501300 167046
Asso'd in Mexico





450-00002-005
F/W ~~45-00002-005~~
601300 187046
Assembled in Mexico

