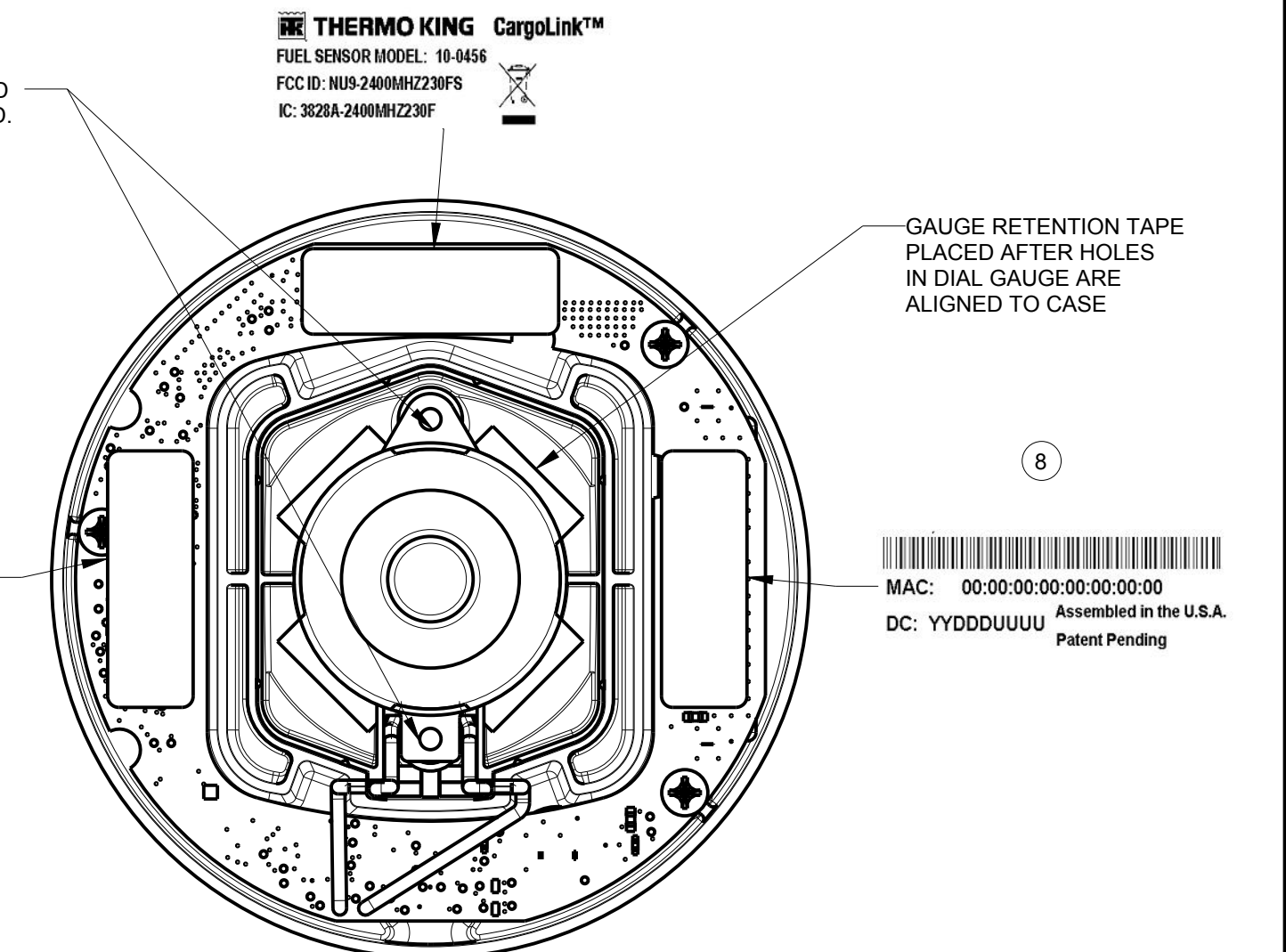
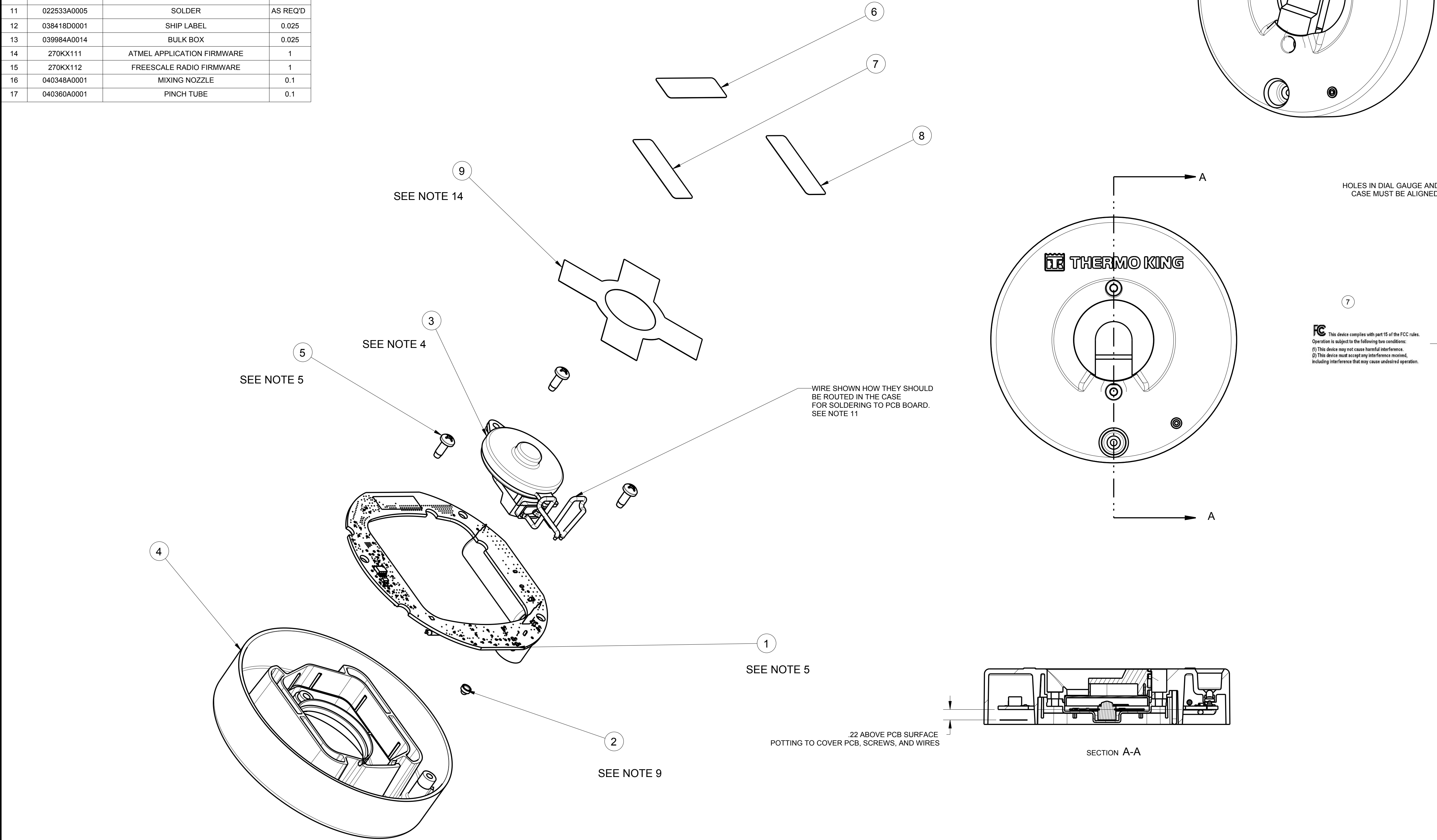


PRODUCT APPLICATION			
ITEM	PART NUMBER	DESCRIPTION	QTY
1	100-01666-01	PCB ASSY W/ CONFORMAL COATING	1
2	040276A0001	LIGHT PIPE	1
3	040302B0001	LEVEL GAUGE(FROM N6244-00678)	1
4	086696B0001	FUEL SENSOR CASE	1
5	040349A0001	6-32 X .375 PAN HEAD SELF TAPPING	3
6	040306A0001	PRODUCT LABEL - MODEL	1
7	040306A0002	PRODUCT LABEL - FCC	1
8	040306A0003	PRODUCT LABEL - MAC	1
9	040359A0001	GAUGE RETENTION TAPE	1
10	040301C0003	POTTING COMPOUND	0.3
11	022533A0005	SOLDER	AS REQ'D
12	038418D0001	SHIP LABEL	0.025
13	039984A0014	BULK BOX	0.025
14	270KX111	ATMEL APPLICATION FIRMWARE	1
15	270KX112	FREESCALE RADIO FIRMWARE	1
16	040348A0001	MIXING NOZZLE	0.1
17	040360A0001	PINCH TUBE	0.1



- NOTES:
- ENGINEERING APPROVAL OF SAMPLES IS REQUIRED PRIOR TO AUTHORIZATION OF PART PRODUCTION.
 - OPERATING TEMPERATURE: -40C TO 85C.
 - POWERED BY AN INTERNAL NON-REPLACEABLE BATTERY.
 - USE ITEM 11 TO SOLDER ITEM 3 GAUGE WIRES TO PCB LOCATIONS X4 AND X5 AS SHOWN.
 - SECURE ITEM 1 PCB ASSEMBLY TO ITEM 4 CASE WITH ITEM 5 MOUNTING SCREWS. TORQUE SCREWS TO BETWEEN 3 AND 5 IN LBS.
 - USE ITEM 10 TO COMPLETELY ENCASE CIRCUIT BOARD.
 - AFTER CURING, ENCAPSULANT TO MEET SPECIFIED HARDNESS AS NOTED IN WORK INSTRUCTION AUDIT PROCEDURE.
 - APPLY ITEMS 6, 7 AND 8 PRODUCT LABELS TO CURED ENCAPSULANT AS SHOWN AFTER UNIT HAS PASSED END OF LINE TEST.
 - PRESS ITEM 2 LIGHT PIPE INTO MATING HOLE IN ITEM 4 CASE.
 - THIS ASSEMBLY MUST BE COMPLIANT WITH THE EUROPEAN UNION DIRECTIVE 2002/95/EC (ROHS DIRECTIVE; 27 JANUARY 2003), AS AMENDED, AT THE TIME OF ORDER.
 - WIRES SHALL BE PRESSED FLUSH AGAINST THE PCB WITH A MINIMUM POTTING THICKNESS OF .010" COVERING THE WIRES.
 - REFERENCE CUSTOMER DRAWING 2E39731 AND CUSTOMER SPECIFICATION "WIRELESS FUEL SENSOR".
 - LABELS TO BE PRINTED WITH FULL RESIN RIBBON RESISTANT TO SCRATCHES, SMEARS, AND MOST HARSH CHEMICALS.
 - PLACE GAUGE RETENTION TAPE CENTERED OVER GAUGE AND ADHERED TO CASE AS SHOWN.

		REV		ZONE	DESCRIPTION OF REVISION(S)	DATE/ECN	BY
		B	A10 C9 A8	ITEM #5 WAS 1114028-003; ITEM#10 QTY WAS 'AS REQ'D'; ADDED ITEMS #16 AND #17; RELEASE, COS 97364		06JUN14	RAM JOE RMS
		A		CONVERTED FROM DRAWING 086697B0001		16MAY14	RAM JOE RMS

		REV		ZONE	DESCRIPTION OF REVISION(S)	DATE/ECN	BY
		B	A10 C9 A8	ITEM #5 WAS 1114028-003; ITEM#10 QTY WAS 'AS REQ'D'; ADDED ITEMS #16 AND #17; RELEASE, COS 97364		06JUN14	RAM JOE RMS
		A		CONVERTED FROM DRAWING 086697B0001		16MAY14	RAM JOE RMS

		REV		ZONE	DESCRIPTION OF REVISION(S)	DATE/ECN	BY
		B	A10 C9 A8	ITEM #5 WAS 1114028-003; ITEM#10 QTY WAS 'AS REQ'D'; ADDED ITEMS #16 AND #17; RELEASE, COS 97364		06JUN14	RAM JOE RMS
		A		CONVERTED FROM DRAWING 086697B0001		16MAY14	RAM JOE RMS

		REV		ZONE	DESCRIPTION OF REVISION(S)	DATE/ECN	BY
		B	A10 C9 A8	ITEM #5 WAS 1114028-003; ITEM#10 QTY WAS 'AS REQ'D'; ADDED ITEMS #16 AND #17; RELEASE, COS 97364		06JUN14	RAM JOE RMS
		A		CONVERTED FROM DRAWING 086697B0001		16MAY14	RAM JOE RMS

		REV		ZONE	DESCRIPTION OF REVISION(S)	DATE/ECN	BY
		B	A10 C9 A8	ITEM #5 WAS 1114028-003; ITEM#10 QTY WAS 'AS REQ'D'; ADDED ITEMS #16 AND #17; RELEASE, COS 97364		06JUN14	RAM JOE RMS
		A		CONVERTED FROM DRAWING 086697B0001		16MAY14	RAM JOE RMS

		REV		ZONE	DESCRIPTION OF REVISION(S)	DATE/ECN	BY
		B	A10 C9 A8	ITEM #5 WAS 1114028-003; ITEM#10 QTY WAS 'AS REQ'D'; ADDED ITEMS #16 AND #17; RELEASE, COS 97364		06JUN14	RAM JOE RMS
		A		CONVERTED FROM DRAWING 086697B0001		16MAY14	RAM JOE RMS

		REV		ZONE	DESCRIPTION OF REVISION(S)	DATE/ECN	BY
		B	A10 C9 A8	ITEM #5 WAS 1114028-003; ITEM#10 QTY WAS 'AS REQ'D'; ADDED ITEMS #16 AND #17; RELEASE, COS 97364		06JUN14	RAM JOE RMS
		A		CONVERTED FROM DRAWING 086697B0001		16MAY14	RAM JOE RMS

		REV		ZONE	DESCRIPTION OF REVISION(S)	DATE/ECN	BY
		B	A10 C9 A8	ITEM #5 WAS 1114028-003; ITEM#10 QTY WAS 'AS REQ'D'; ADDED ITEMS #16 AND #17; RELEASE, COS 97364		06JUN14	RAM JOE RMS
		A		CONVERTED FROM DRAWING 086697B0001		16MAY14	RAM JOE RMS

		REV		ZONE	DESCRIPTION OF REVISION(S)	DATE/ECN	BY
		B	A10 C9 A8	ITEM #5 WAS 1114028-003; ITEM#10 QTY WAS 'AS REQ'D'; ADDED ITEMS #16 AND #17; RELEASE, COS 97364		06JUN14	RAM JOE RMS
		A		CONVERTED FROM DRAWING 086697B0001		16MAY14	RAM JOE RMS

		REV		ZONE	DESCRIPTION OF REVISION(S)	DATE/ECN	BY
		B	A10 C9 A8	ITEM #5 WAS 1114028-003; ITEM#10 QTY WAS 'AS REQ'D'; ADDED ITEMS #16 AND #17; RELEASE, COS 97364		06JUN14	RAM JOE RMS
		A		CONVERTED FROM DRAWING 086697B0001		16MAY14	RAM JOE RMS

		REV		ZONE	DESCRIPTION OF REVISION(S)	DATE/ECN	BY
		B	A10 C9 A8	ITEM #5 WAS 1114028-003; ITEM#10 QTY WAS 'AS REQ'D'; ADDED ITEMS #16 AND #17; RELEASE, COS 97364		06JUN14	RAM JOE RMS
		A		CONVERTED FROM DRAWING 086697B0001		16MAY14	RAM JOE RMS

		REV		ZONE	DESCRIPTION OF REVISION(S)	DATE/ECN	BY
		B	A10 C9 A8	ITEM #5 WAS 1114028-003; ITEM#10 QTY WAS 'AS REQ'D'; ADDED ITEMS #16 AND #17; RELEASE, COS 97364		06JUN14	RAM JOE RMS
		A		CONVERTED FROM DRAWING 086697B0001		16MAY14	RAM JOE RMS

		REV		ZONE	DESCRIPTION OF REVISION(S)	DATE/ECN	BY
		B	A10 C9 A8	ITEM #5 WAS 1114028-003; ITEM#10 QTY WAS 'AS REQ'D'; ADDED ITEMS #16 AND #17; RELEASE, COS 97364		06JUN14	RAM JOE RMS
		A		CONVERTED FROM DRAWING 086697B0001		16MAY14	RAM JOE RMS

		REV		ZONE	DESCRIPTION OF REVISION(S)	DATE/ECN	BY
		B	A10 C9 A8	ITEM #5 WAS 1114028-003; ITEM#10 QTY WAS 'AS REQ'D'; ADDED ITEMS #16 AND #17; RELEASE, COS 97364		06JUN14	RAM JOE RMS
		A		CONVERTED FROM DRAWING 086697B0001		16MAY14	RAM JOE RMS

		REV		ZONE	DESCRIPTION OF REVISION(S)	DATE/ECN	BY
		B	A10 C9 A8	ITEM #5 WAS 1114028-003; ITEM#10 QTY WAS 'AS REQ'D'; ADDED ITEMS #16 AND #17; RELEASE, COS 97364		06JUN14	RAM JOE RMS
		A		CONVERTED FROM DRAWING 086697B0001		16MAY14	RAM JOE RMS

		REV		ZONE	DESCRIPTION OF REVISION(S)	DATE/ECN	BY
		B	A10 C9 A8	ITEM #5 WAS 1114028-003; ITEM#10 QTY WAS 'AS REQ'D'; ADDED ITEMS #16 AND #17; RELEASE, COS 97364		06JUN14	RAM JOE RMS
		A		CONVERTED FROM DRAWING 086697B0001		16MAY14	RAM JOE RMS

		REV		ZONE	DESCRIPTION OF REVISION(S)	DATE/ECN	BY
		B	A10 C9 A8	ITEM #5 WAS 1114028-003; ITEM#10 QTY WAS 'AS REQ'D'; ADDED ITEMS #16 AND #17; RELEASE, COS 97364		06JUN14	RAM JOE RMS
		A		CONVERTED FROM DRAWING 086697B0001		16MAY14	RAM JOE RMS

		REV		ZONE	DESCRIPTION OF REVISION(S)	DATE/ECN	BY
		B	A10 C9 A8	ITEM #5 WAS 1114028-003; ITEM#10 QTY WAS 'AS REQ'D'; ADDED ITEMS #16 AND #17; RELEASE, COS 97364		06JUN14	RAM JOE RMS
		A		CONVERTED FROM DRAWING 086697B0001		16MAY14	RAM JOE RMS

		REV		ZONE	DESCRIPTION OF REVISION(S)	DATE/ECN	BY
		B	A10 C9 A8	ITEM #5 WAS 1114028-003; ITEM#10 QTY WAS 'AS REQ'D'; ADDED ITEMS #16 AND #17; RELEASE, COS 97364		06JUN14	RAM JOE RMS
		A		CONVERTED FROM DRAWING 086697B0001		16MAY14	RAM JOE RMS

		REV		ZONE	DESCRIPTION OF REVISION(S)	DATE/ECN	BY
		B	A10 C9 A8	ITEM #5 WAS 1114028-003; ITEM#10 QTY WAS 'AS REQ'D'; ADDED ITEMS #16 AND #17; RELEASE, COS 97364		06JUN14	RAM JOE RMS
		A		CONVERTED FROM DRAWING 086697B0001		16MAY14	RAM JOE RMS

		REV		ZONE	DESCRIPTION OF REVISION(S)	DATE/ECN	BY
		B	A10 C9 A8	ITEM #5 WAS 1114028-003; ITEM#10 QTY WAS 'AS REQ'D'; ADDED ITEMS #16 AND #17; RELEASE, COS 97364		06JUN14	RAM JOE RMS
		A		CONVERTED FROM DRAWING 086697B0001		16MAY14	RAM JOE RMS

		REV		ZONE	DESCRIPTION OF REVISION(S)	DATE/ECN	BY
		B	A10 C9 A8	ITEM #5 WAS 1114028-003; ITEM#10 QTY WAS 'AS REQ'D'; ADDED ITEMS #16 AND #17; RELEASE, COS 97364		06JUN14	RAM JOE RMS
		A		CONVERTED FROM DRAWING 086697B0001		16MAY14	RAM JOE RMS

		REV		ZONE	DESCRIPTION OF REVISION(S)	DATE/ECN	BY
		B	A10 C9 A8	ITEM #5 WAS 1114028-003; ITEM#10 QTY WAS 'AS REQ'D'; ADDED ITEMS #16 AND #17; RELEASE, COS 97364		06JUN14	RAM JOE RMS
		A		CONVERTED FROM DRAWING 086697B0001		16MAY14	RAM JOE RMS

		REV		ZONE	DESCRIPTION OF REVISION(S)	DATE/ECN	BY
		B	A10 C9 A8	ITEM #5 WAS 1114028-003; ITEM#10 QTY WAS 'AS REQ'D'; ADDED ITEMS #16 AND #17; RELEASE, COS 97364		06JUN14	RAM JOE RMS
		A		CONVERTED FROM DRAWING 086697B0001		16MAY14	RAM JOE RMS

		REV		ZONE	DESCRIPTION OF REVISION(S)	DATE/ECN	BY
		B	A10 C9 A8	ITEM #5 WAS 1114028-003; ITEM#10 QTY WAS 'AS REQ'D'; ADDED ITEMS #16 AND #17; RELEASE, COS 97364		06JUN14	RAM JOE RMS
		A		CONVERTED FROM DRAWING 086697B0001		16MAY14	RAM JOE RMS

		REV		ZONE	DESCRIPTION OF REVISION(S)	DATE/ECN	BY
		B	A10 C9 A8	ITEM #5 WAS 1114028-003; ITEM#10 QTY WAS 'AS REQ'D'; ADDED ITEMS #16 AND #17; RELEASE, COS 97364		06JUN14	RAM JOE RMS
		A		CONVERTED FROM DRAWING 086697B0001		16MAY14	RAM JOE RMS

		REV		ZONE	DESCRIPTION OF REVISION(S)	DATE/ECN	BY
		B	A10 C9 A8	ITEM #5 WAS 1114028-003; ITEM#10 QTY WAS 'AS REQ'D'; ADDED ITEMS #16 AND #17; RELEASE, COS 97364		06JUN14	RAM JOE RMS
		A		CONVERTED FROM DRAWING 086697B0001		16MAY14	RAM JOE RMS

		REV		ZONE	DESCRIPTION OF REVISION(S)	DATE/ECN	BY
		B	A10 C9 A8	ITEM #5 WAS 1114028-003; ITEM#10 QTY WAS 'AS REQ'D'; ADDED ITEMS #16 AND #17; RELEASE, COS 97364		06JUN14	RAM JOE RMS
		A		CONVERTED FROM DRAWING 086697B0001		16MAY14	RAM JOE RMS

		REV		ZONE	DESCRIPTION OF REVISION(S)	DATE/ECN	BY
		B	A10 C9 A8	ITEM #5 WAS 1114028-003; ITEM#10 QTY WAS 'AS REQ'D'; ADDED ITEMS #16 AND #17; RELEASE, COS 97364		06JUN14	RAM JOE RMS
		A		CONVERTED FROM DRAWING 086697B0001		16MAY14	RAM JOE RMS

		REV		ZONE	DESCRIPTION OF REVISION(S)	DATE/ECN	BY
		B	A10 C9 A8	ITEM #5 WAS 1114028-003; ITEM#10 QTY WAS 'AS REQ'D'; ADDED ITEMS #16 AND #17; RELEASE, COS 97364		06JUN14	RAM JOE RMS
		A		CONVERTED FROM DRAWING 086697B0001		16MAY14	RAM JOE RMS

		REV		ZONE	DESCRIPTION OF REVISION(S)	DATE/ECN	BY
		B	A10 C9 A8	ITEM #5 WAS 1114028-003; ITEM#10 QTY WAS 'AS REQ'D'; ADDED ITEMS #16 AND #17; RELEASE, COS 97364		06JUN14	RAM JOE RMS
		A		CONVERTED FROM DRAWING 086697B0001		16MAY14	RAM JOE RMS

		REV		ZONE	DESCRIPTION OF REVISION(S)	DATE/ECN	BY
		B	A10 C9 A8	ITEM #5 WAS 1114028-003; ITEM#10 QTY WAS 'AS REQ'D'; ADDED ITEMS #16 AND #17; RELEASE, COS 97364		06JUN14	RAM JOE RMS
		A		CONVERTED FROM DRAWING 086697B0001		16MAY14	RAM JOE RMS

		REV		ZONE	DESCRIPTION OF REVISION(S)	DATE/ECN	BY
		B	A10 C9 A8	ITEM #5 WAS 1114028-003; ITEM#10 QTY WAS 'AS REQ'D'; ADDED ITEMS #16 AND #17; RELEASE, COS 97364		06JUN14	RAM JOE RMS
		A		CONVERTED FROM DRAWING 086697B0001		16MAY14	RAM JOE RMS

		REV		ZONE	DESCRIPTION OF REVISION(S)	DATE/ECN	BY
		B	A10 C9 A8	ITEM #5 WAS 1114028-003; ITEM#10 QTY WAS 'AS REQ'D'; ADDED ITEMS #16 AND #17; RELEASE, COS 97364		06JUN14	RAM JOE RMS
		A		CONVERTED FROM DRAWING 086697B0001		16MAY14	RAM JOE RMS

		REV		ZONE	DESCRIPTION OF REVISION(S)	DATE/ECN	BY
		B	A10 C9 A8	ITEM #5 WAS 1114028-003; ITEM#10 QTY WAS 'AS REQ'D'; ADDED ITEMS #16 AND #17; RELEASE, COS 97364		06JUN14	RAM JOE RMS
		A		CONVERTED FROM DRAWING 086697B0001		16MAY14	RAM JOE RMS

		REV		ZONE	DESCRIPTION OF REVISION(S)	DATE/ECN	BY
		B	A10 C9 A8	ITEM #5 WAS 1114028-003; ITEM#10 QTY WAS 'AS REQ'D'; ADDED ITEMS #16 AND #17; RELEASE, COS 97364		06JUN14	RAM JOE RMS
		A		CONVERTED FROM DRAWING 086697B0001		16MAY14	RAM JOE RMS

		REV		ZONE	DESCRIPTION OF REVISION(S)	DATE/ECN	BY
		B	A10 C9 A8	ITEM #5 WAS 1114028-003; ITEM#10 QTY WAS 'AS REQ'D'; ADDED ITEMS #16 AND #17; RELEASE, COS 97364		06JUN14	RAM JOE RMS
		A		CONVERTED FROM DRAWING 086697B0001		16MAY14	RAM JOE RMS

		REV		ZONE	DESCRIPTION OF REVISION(S)	DATE/ECN	BY
		B	A10 C9 A8	ITEM #5 WAS 1114028-003; ITEM#10 QTY WAS 'AS REQ'D'; ADDED ITEMS #16 AND #17; RELEASE, COS 97364		06JUN14	RAM JOE RMS
		A		CONVERTED FROM DRAWING 086697B0001		16MAY14	RAM JOE RMS

		REV		ZONE	DESCRIPTION OF REVISION(S)	DATE/ECN	BY
		B	A10 C9 A8	ITEM #5 WAS 1114028-003; ITEM#10 QTY WAS 'AS REQ'D'; ADDED ITEMS #16 AND #17; RELEASE, COS 97364		06JUN14	RAM JOE RMS
		A		CONVERTED FROM DRAWING 086697B0001		16MAY14	RAM JOE RMS

		REV		ZONE	DESCRIPTION OF REVISION(S)	DATE/ECN	BY
		B	A10 C9 A8	ITEM #5 WAS 1114028-003; ITEM#10 QTY WAS 'AS REQ'D'; ADDED ITEMS #16 AND #17; RELEASE, COS 97364		06JUN14	RAM JOE RMS
		A		CONVERTED FROM DRAWING 086697B0001		16MAY14	RAM JOE RMS

		REV		ZONE	DESCRIPTION OF REVISION(S)	DATE/ECN	BY
		B	A10 C9 A8	ITEM #5 WAS 1114028-003; ITEM#10 QTY WAS 'AS REQ'D'; ADDED ITEMS #16 AND #17; RELEASE, COS 97364		06JUN14	RAM JOE RMS
		A		CONVERTED FROM DRAWING 086697B0001		16MAY14	RAM JOE RMS

		REV		ZONE	DESCRIPTION OF REVISION(S)	DATE/ECN	BY
		B	A10 C9 A8	ITEM #5 WAS 1114028-003; ITEM#10 QTY WAS 'AS REQ'D'; ADDED ITEMS #16 AND #17; RELEASE, COS 97364		06JUN14	RAM JOE RMS
		A		CONVERTED FROM DRAWING 086697B0001		16MAY14	RAM JOE RMS

		REV		ZONE	DESCRIPTION OF REVISION(S)	DATE/ECN	BY
		B	A10 C9 A8	ITEM #5 WAS 1114028-003; ITEM#10 QTY WAS 'AS REQ'D'; ADDED ITEMS #16 AND #17; RELEASE, COS 97364		06JUN14	RAM JOE RMS
		A		CONVERTED FROM DRAWING 086697B0001		16MAY14	RAM JOE RMS

		REV		ZONE	DESCRIPTION OF REVISION(S)	DATE/ECN	BY
		B	A10 C9 A8	ITEM #5 WAS 1114028-003; ITEM#10 QTY WAS 'AS REQ'D'; ADDED ITEMS #16 AND #17; RELEASE, COS 97364		06JUN14	RAM JOE RMS
		A		CONVERTED FROM DRAWING 086697B0001		16MAY14	RAM JOE RMS

		REV		ZONE	DESCRIPTION OF REVISION(S)	DATE/ECN	BY
		B	A10 C9 A8	ITEM #5 WAS 1114028-003; ITEM#10 QTY WAS 'AS REQ'D'; ADDED ITEMS #16 AND #17; RELEASE, COS 97364		06JUN14	RAM JOE RMS
		A		CONVERTED FROM DRAWING 086697B0001		16MAY14	RAM JOE RMS

		REV		ZONE	DESCRIPTION OF REVISION(S)	DATE/ECN	BY
		B	A10 C9 A8	ITEM #5 WAS 1114028-003; ITEM#10 QTY WAS 'AS REQ'D'; ADDED ITEMS #16 AND #17; RELEASE, COS 97364		06JUN14	RAM JOE RMS
		A		CONVERTED FROM DRAWING 086697B0001		16MAY14	RAM JOE RMS

		REV		ZONE	DESCRIPTION OF REVISION(S)	DATE/ECN	BY
		B	A10 C9 A8	ITEM #5 WAS 1114028-003; ITEM#10 QTY WAS 'AS REQ'D'; ADDED ITEMS #16 AND #17; RELEASE, COS 97364		06JUN14	RAM JOE RMS
		A		CONVERTED FROM DRAWING 086697B0001		16MAY14	RAM JOE RMS

		REV		ZONE	DESCRIPTION OF REVISION(S)	DATE/ECN	BY
		B	A10 C9 A8	ITEM #5 WAS 1114028-003; ITEM#10 QTY WAS 'AS REQ'D'; ADDED ITEMS #16 AND #17; RELEASE, COS 97364		06JUN14	RAM JOE RMS
		A		CONVERTED FROM DRAWING 086697B0001		16MAY14	RAM JOE RMS

		REV		ZONE	DESCRIPTION OF REVISION(S)	DATE/ECN	BY
		B	A10 C9 A8	ITEM #5 WAS 1114028-003; ITEM#10 QTY WAS 'AS REQ'D'; ADDED ITEMS #16 AND #17; RELEASE, COS 97364		06JUN14	RAM JOE RMS
		A		CONVERTED FROM DRAWING 086697B0001		16MAY14	RAM JOE RMS

		REV		ZONE	DESCRIPTION OF REVISION(S)	DATE/ECN	BY
		B	A10 C9 A8	ITEM #5 WAS 1114028-003; ITEM#10 QTY WAS 'AS REQ'D'; ADDED ITEMS #16 AND #17; RELEASE, COS 97364		06JUN14	RAM JOE RMS
		A		CONVERTED FROM DRAWING 086697B0001		16MAY14	RAM JOE RMS

		REV		ZONE	DESCRIPTION OF REVISION(S)</
--	--	-----	--	------	------------------------------