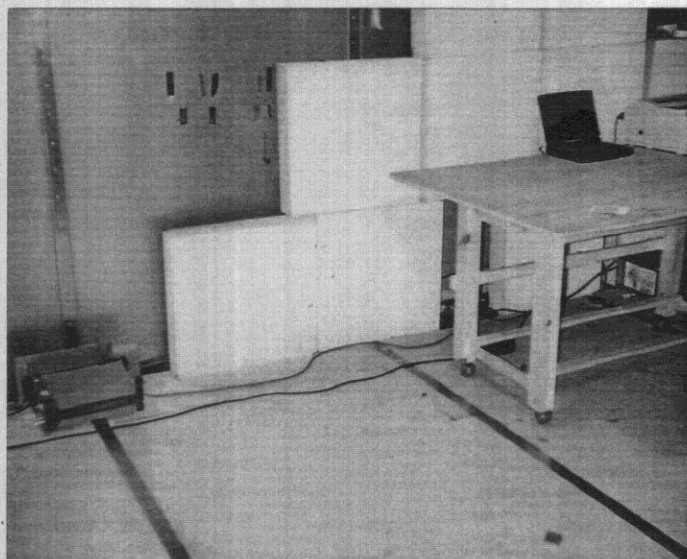


Tested by : A. Wheelen

Report Number: 4215 / 1600 / A / 1 / TR

Date : 14th May 1998.

**PHOTOGRAPHS OF EUT SETUP**



**Fig 3. Angled View.**

Appendix B

PHOTOGRAPHS OF EUT SETUP

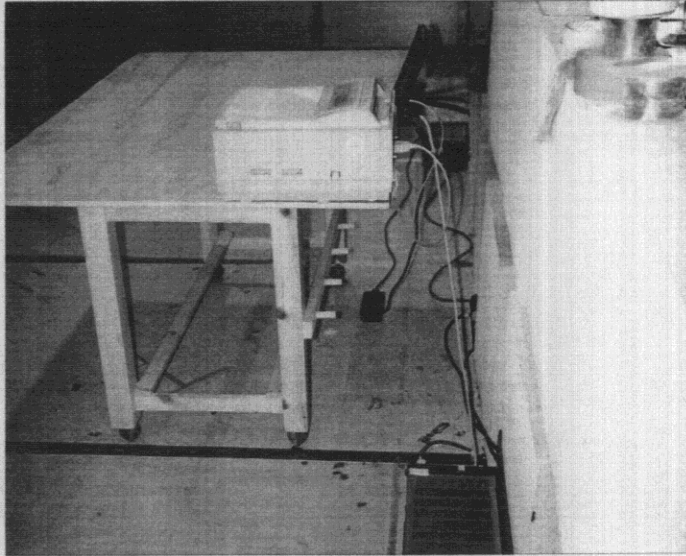


Fig 1. Side View.

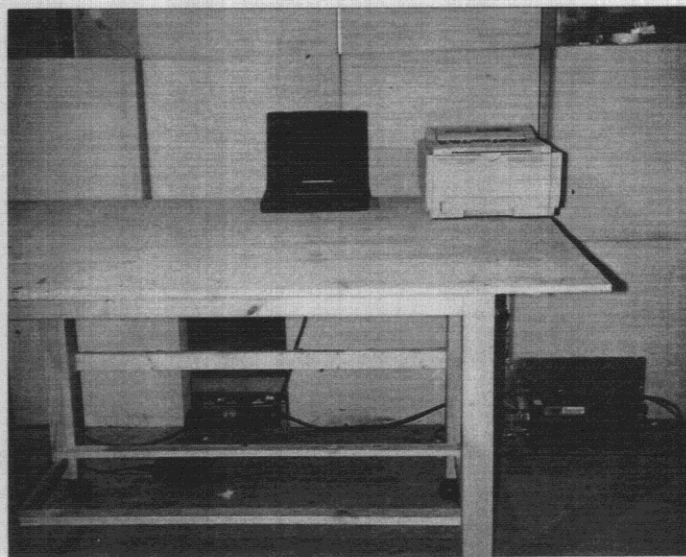


Fig 2. Front View.



Tested by .W.DUFF.....

Appendix C  
PHOTOGRAPHS OF EUT CABLING



Fig 1. Conducted emission tests, general view

Commercial In Confidence

Report Number: 4215 / 1600 / A / 2 / TR  
Date : 25th MAY 1998



Fig 2. Conducted emission tests, showing measurement LISN



Commercial In Confidence

Report Number: 4215 / 1600 / A / 2 / TR  
Date : 25th MAY 1998

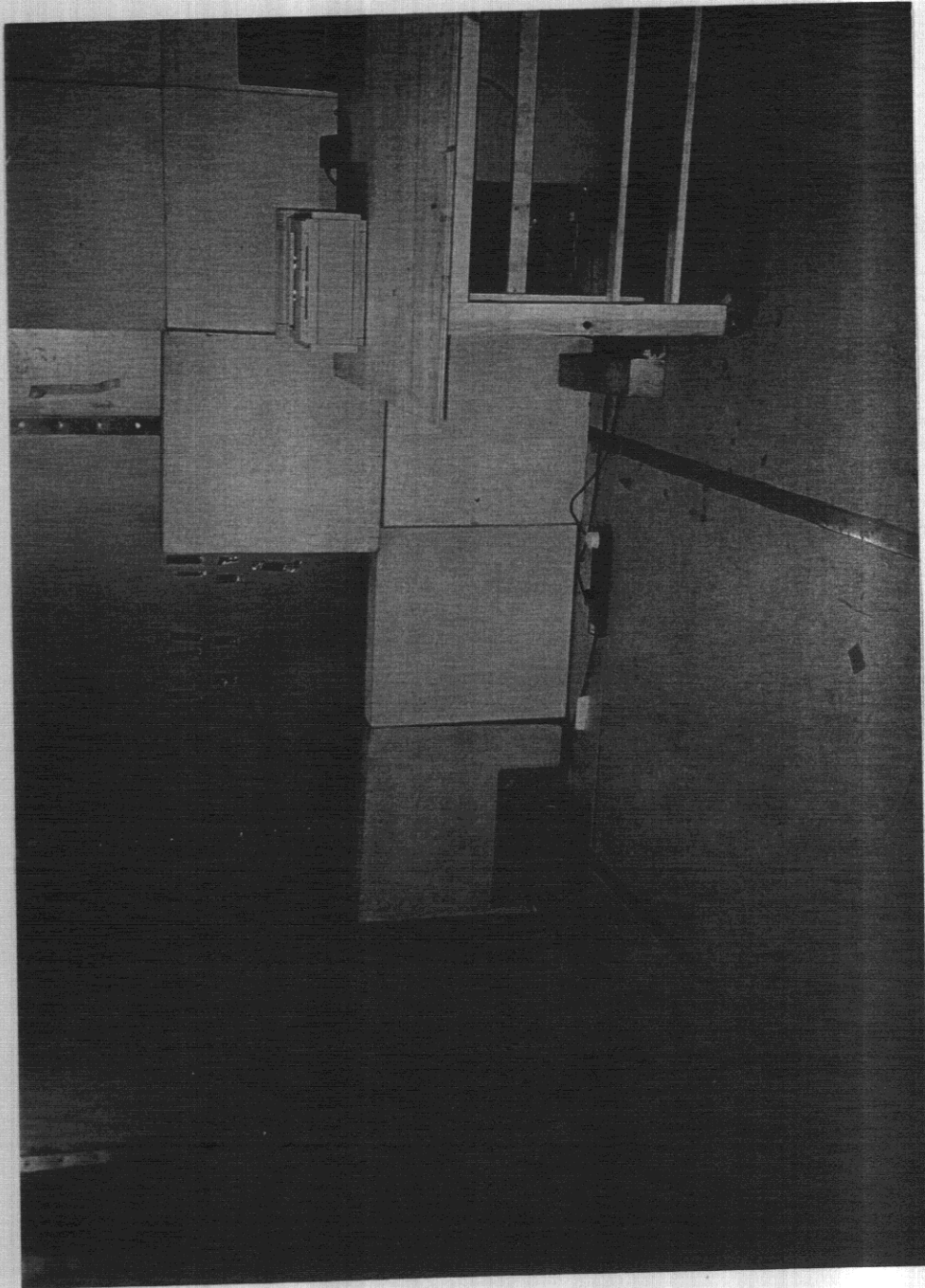


Fig 3. Conducted emission tests, showing PC/Accessory LISN

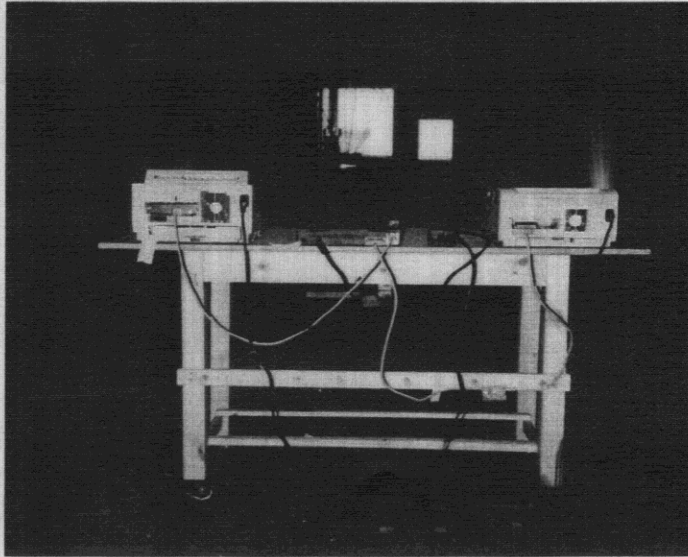


Fig 4. Radiated emission tests, showing cables

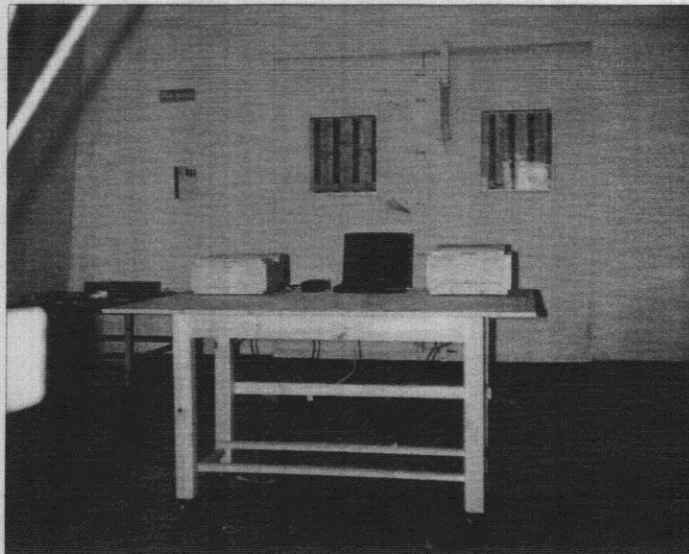


Fig 5. Radiated emission tests, general view