



User's Guide

**UHF-PLL TRANSLATION
TOUR-GUIDE SYSTEM**

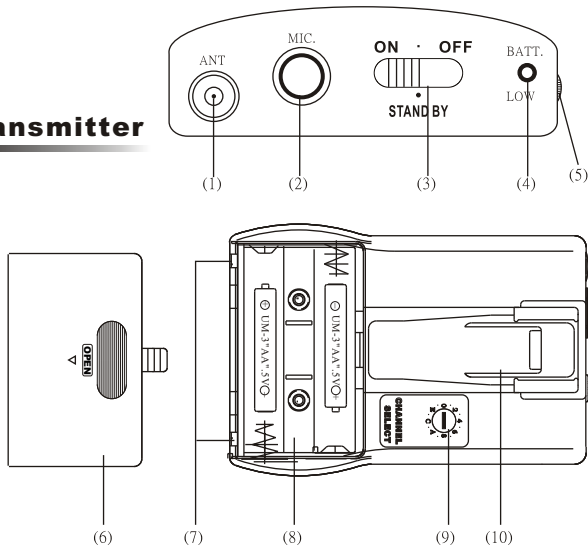
***** CONTENTS *****

A. Descriptions of Parts	3~4
B. Features	5~6
C. Transmitter	6
D. Key Specifications /Special Features Overall system	7
E. Receiver	8
F. Applications	8~11

* * * * *

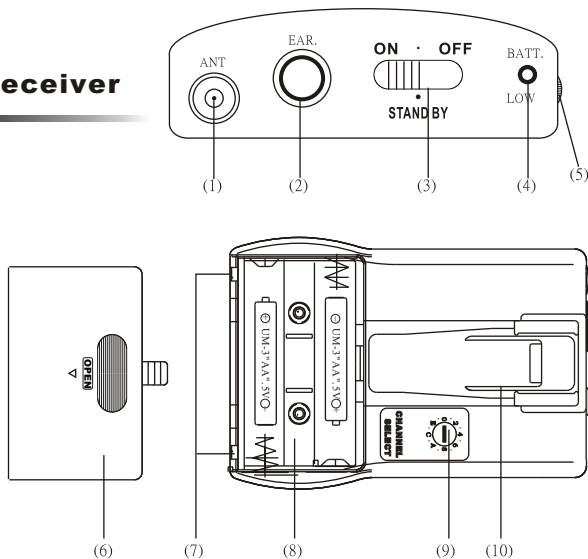
A. Descriptions of Parts

Transmitter



- (1) Antenna
- (2) MIC. input
- (3) Power switch
- (4) LED indicator
- (5) MIC. volume
- (6) Battery cover
- (7) Charging contact
- (8) Battery box
- (9) Channel selector
- (10) Belt clip

Receiver



- (1) Antenna
- (2) EAR. input
- (3) Power switch
- (4) LED indicator
- (5) EAR. volume
- (6) Battery cover
- (7) Charging contact
- (8) Battery box
- (9) Channel selector
- (10) Belt clip

B. Features

- 1. Transmitter with built-in, hidden electrical condenser mic. volume adjustable , applicable with tie clip or head set microphone.**
- 2. Receiver with built-in ,hidden super thin speaker , volume adjustable , applicable with ear set.**
- 3. Match with dual slots charging stand or 30 slots portable charging case , easy to recharge battery, no need to buy additional batteries.**
- 4. Applicable Occasions : Tour Guide , Museum and Factory visit, Oral multi-languages translating system ,audio-visual language teaching , assist wireless amplification system etc,**

C. Transmitter

● RF output	10 mW (according to regulation)
● Battery life Ni-MH. Rechargeable	10 hours typical
● Battery life Alkaline disposable	17 hours typical
● Dimensions (L*W*H)	92*65*25 mm
● Weight with battery	128g

D. Receiver

● Audio level	0 dBv
● Earphone connector	3.5mm jack socket, for mono (built-in hidden speaker) or stereo without speaker
● Battery life Ni- MH. Rechargeable	9 hours typical
● Battery life Alkaline disposable	16 hours typical
● Dimensions (D*W*H)	92 * 65 * 25 mm
● Weight	130g

E. Key Specifications /Special Features Overall system

● Oscillation type	PLL synthesized control OSC
● Carrier frequency range	UHF 740~865 MHz (according to regulation)
● Adjustable frequencies	pre-programmed 8 or 16 switchable frequencies
● Battery	1.2V (Ni-mh.1300mA)* 2 AA rechargeable battery 1.5V * 2 AA Alkaline disposable
● Operating range	70~100M (opening field)

F. Applications

- 1. Before use, please install the antenna and batteries on transmitter and receiver .**
- 2. Transmitter with built-in condenser mini mic. or external microphone (Mic. jack).
Receiver with built-in mini speaker or external earphone (earphone jack).**
- 3. Move the power switch of transmitter to the "On" position .The indicator lamp will flash red once indicating power input properly. If the indicator lamp stays red while the switch is on . it means the power of batteries is low and the batteries need to be recharged (when using with rechargeable battery) or to be replaced (with dry cell batteries).**
- 4. Move the power switch of receiver to the "On" position. The green LED will light up indicates receiving the signal from transmitter. When LED stays red while switch is on, it means the power of batteries is low.**
- 5. Adjust the volume control switch both on receiver and transmitter to proper volume.**

- 6. Adjust both transmitter and receiver channel (on back side) to the desired same channel (0~F ch.). If the selected channel is noisy, Adjust them to the other channel.**

- 7. please keep the operation distance more than 10~20M. between transmitter and receiver when using with multi channel at same time to avoid interference.**

- 8. Please remove the batteries if the units will be out of service for a long time, to avoid possible damage due to leakage.**

- 9. When recharging the transmitter and receiver with charging stand ,please turn the switch to "OFF" position and then insert in the charging slot for recharging.(please use 2 pcs AA size Ni-MH. Rechargeable battery)**

- 10. This system also could use AA type dry battery, but please do not put them on charging stand for recharging.**

Attention:

1. Keep away from rain , water or the moisture places to avoid any damages caused.
2. Avoid and external forces or impact.
3. Do not use it in high-temperature environment.
4. Do not connect with others different specific power supply.
5. Keep the wireless microphone away from sources of interference such as operating COMPUTERS , VCD , DVD...ect or communication equipment.
6. If the unit is not using for long period , please make sure the batteries are moved out.

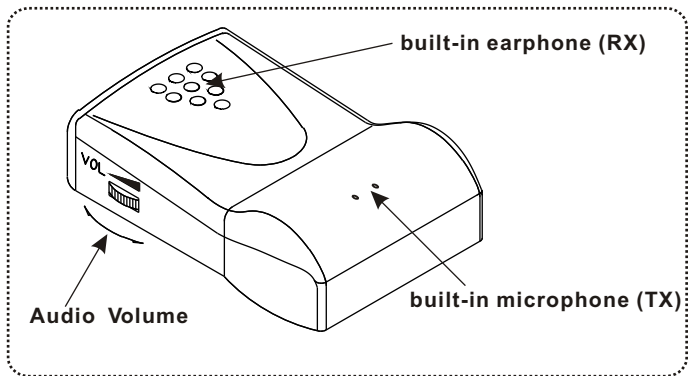
Notice : The changes or modifications not expressly approved by the party responsible for compliance could void the user's authority to operate the equipment.

FCC

Model :
FCC ID :



THIS DEVICE COMPLIES WITH PART 15 OF THE FCC RULES OPERATIONS IS SUBJECT TO THE FOLLOWING TWO CONDITIONS: (1) THIS DEVICE MAY NOT CAUSE HARMFUL INTERFERENCE AND (2) THIS DEVICE MUST ACCEPT ANY INTERFERENCE RECEIVED, INCLUDING INTERFERENCE THAT MAY CAUSE UNDESIRIED OPERATION



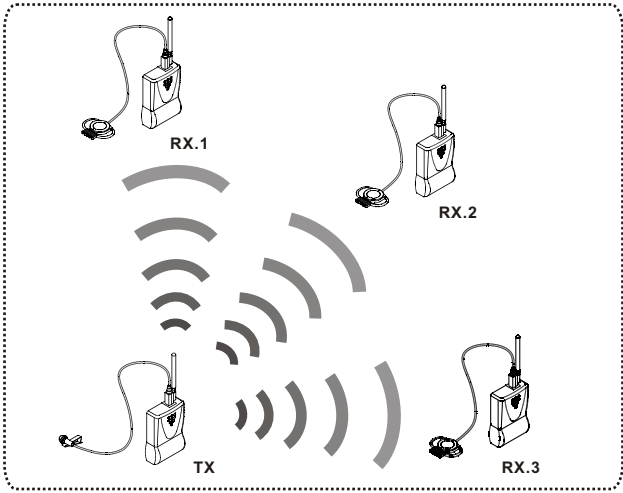
Fig(1)

(TX - RX)



Fig(2)

(TX - Multi Rx)



Fig(3)