



101 REGENCY PARKWAY  
MANSFIELD, TX 76063  
817-842-8000  
FAX 817-842-8100

---

# **Wall Mount Booster LG Installation Instructions**

**FCC ID: NTAWMLG**

**IC: 4732A-WMLG**

**14-Nov-11**



101 REGENCY PARKWAY  
MANSFIELD, TX 76063  
817-842-8000  
FAX 817-842-8100

### **CAUTION**



The User and the Installer should be aware that changes and modifications to the equipment not expressly approved by Master Meter could void warranty and the user's authority to operate the equipment.

Professionally trained personnel should install the equipment.

The antenna used for this transmitter must be installed to normally provide minimum separation distance of at least 20 cm from all persons and must not be co-located or operating in conjunction with any other antenna or transmitter

### **ATTENTION**



The digital portion of the transceiver has been tested and found to comply with the limits for a Class B digital device, pursuant to part 15 of the FCC Rules. These limits are designed to provide reasonable protection against harmful interference in a residential installation. This equipment generates uses and can radiate radio frequency energy and, if not installed and used in accordance with the instructions, may cause harmful interference to radio communications. However, there is no guarantee that interference will not occur in a particular installation. If this equipment does cause harmful interference to radio or television reception, which can be determined by turning the equipment off and on, the user is encouraged to try to correct the interference by one or more of the following measures:

- 1.) Reorient or relocate the receiving antenna.
- 2.) Increase the separation between the equipment and receiver.
- 3.) Connect the equipment into an outlet on a circuit different from that to which the receiver is connected.
- 4.) Consult the dealer or an experienced radio/TV technician for help.

This device complies with Part 15 of FCC Rules and with Industry Canada licence-exempt RSS standard(s). Operation is subject to the following two conditions:

- (1) This device may not cause harmful interference, and
- (2) This device must accept any interference received, including interference that may cause undesired operation.

*Le présent appareil est conforme aux CNR d'Industrie Canada applicables aux appareils radio exempts de licence. L'exploitation est autorisée aux deux conditions suivantes :*

*(1) l'appareil ne doit pas produire de brouillage, et (2) l'utilisateur de l'appareil doit accepter tout brouillage radioélectrique subi, même si le brouillage est susceptible d'en compromettre le fonctionnement.*



101 REGENCY PARKWAY  
MANSFIELD, TX 76063  
817-842-8000  
FAX 817-842-8100

---

## **INTRODUCTION**

The 2WM-LG end unit for water meters provides two-way communication capabilities over the Landis & Gyr Gridstream™ RF Network.

The 2WM-LG is battery operated unit in the unlicensed 902-928MHz band. The unit complies with Part 15 of the FCC rules

Following are the main features of the 2WM-LG unit:

- Periodically transmission of the water meter readings (1-4 times per day)
- On request reads for last-time meter reads
- Alarm report & data logging
- Remote, over-the-air firmware upgrades
- Remote unit configurations
- Confirmation of network connectivity

The 2WM-LG may be connected to the following meters (but not limited to):

- Segentia TM
- Invensys TM
- Hersey 5/8" TM
- ABB TM
- Neptune ARB\_V TM
- Neptune ARB -2 TM
- Sensus TM
- Schlumberger ARB\_V TM
- 3G LCD (Arad technologies) TM



101 REGENCY PARKWAY  
MANSFIELD, TX 76063  
817-842-8000  
FAX 817-842-8100

---

## **1 - Place Setting**

- *The 2WM-LG unit can be wall mounted in an external open site or within buildings*

### **Note:**

*The 2WM-LG data transmission may be adversely affected if it is installed close to RF or EM noise generators, for example: air conditioner units, electric generator, radio transmitter, car parking and others.*

*If you encounter such problems, please consult Master Meter Service representative for technical assistance.*



101 REGENCY PARKWAY  
MANSFIELD, TX 76063  
817-842-8000  
FAX 817-842-8100

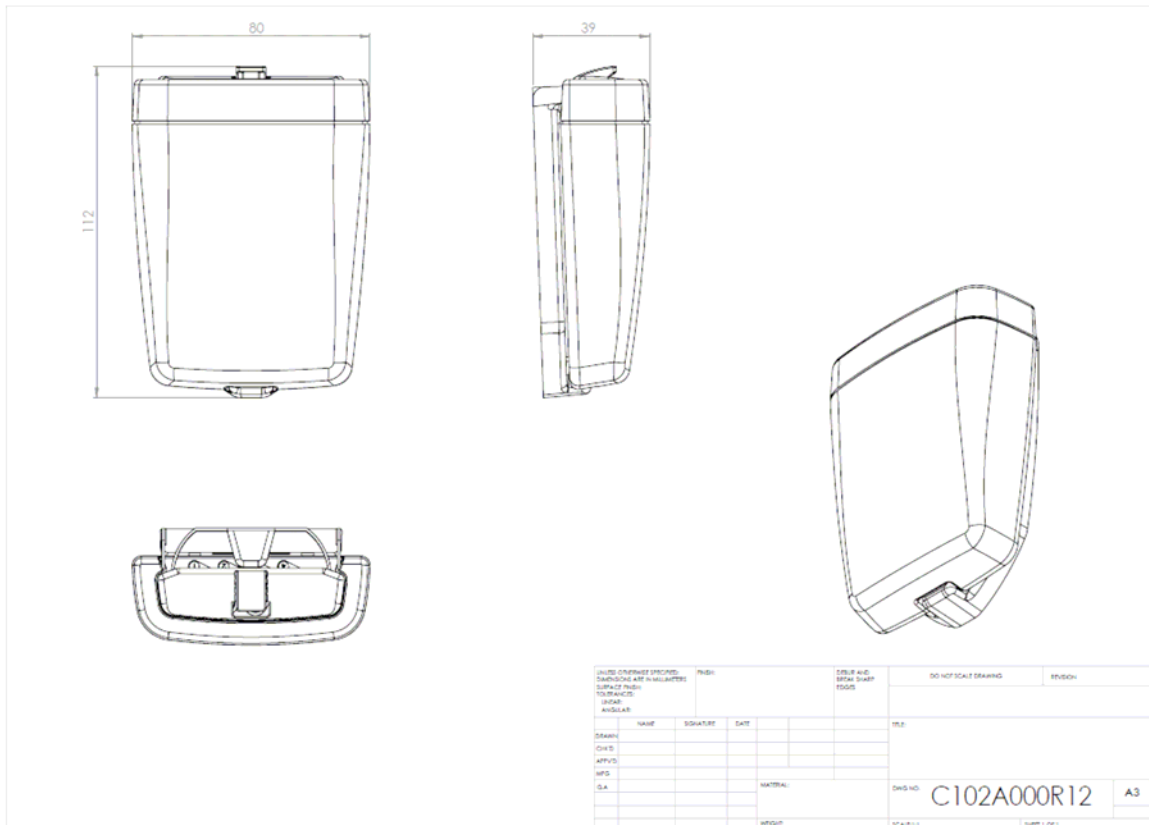
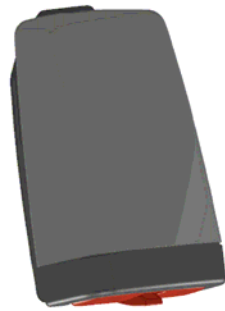
## 2 – Kit Contents

<i>Quantity</i>	<i>Name</i>
<i>1</i>	<i>2WM-LG unit</i>
<i>1</i>	<i>Seal Cover</i>
<i>1</i>	<i>Wall Mount Clip</i>
<i>2</i>	<i>Tapping screw</i>
<i>2</i>	<i>Plastic masonry insert</i>
<i>1</i>	<i>ID label sticker for meter identity</i>



101 REGENCY PARKWAY  
 MANSFIELD, TX 76063  
 817-842-8000  
 FAX 817-842-8100

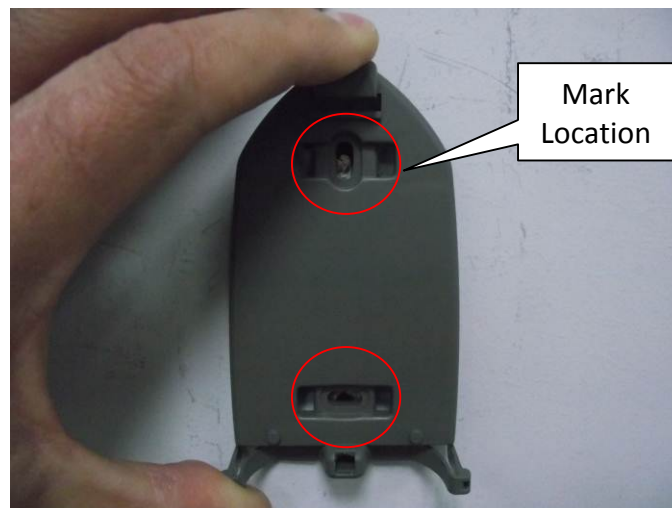
## 2WM-LG unit – Profile #1



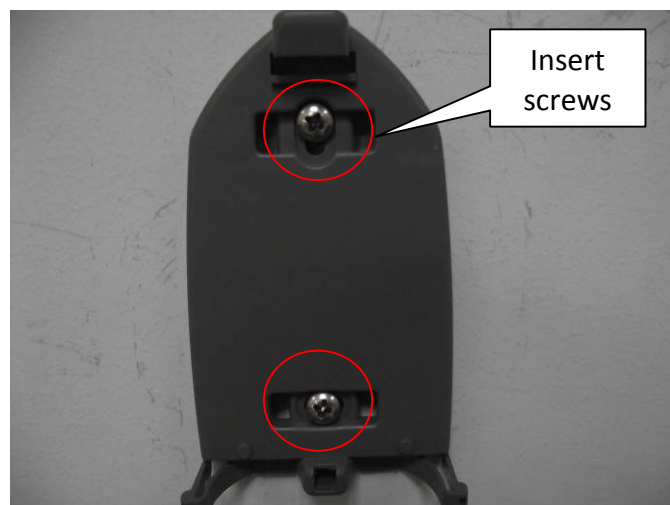
### **3 – Installation Procedure**

*The 2WM-LG is intended for wall installation in open sites and buildings.*

1. *Mark the locations of the two screws on the wall, according to the holes in the wall mount clip of the unit.*



2. *Drill 2 holes and insert the Plastic masonry inserts.*
3. *Connect the wall mount clip with the two screw supplied.*





101 REGENCY PARKWAY  
MANSFIELD, TX 76063  
817-842-8000  
FAX 817-842-8100

---

4. Attached the 2WMB-LG unit to the clip.



5. Seal the cable hole with the supplied seal cover.







101 REGENCY PARKWAY  
MANSFIELD, TX 76063  
817-842-8000  
FAX 817-842-8100

- 
6. *Connect the wire of the unit according to the connection guide on the water unit, pay attention to connect it right.*





101 REGENCY PARKWAY  
MANSFIELD, TX 76063  
817-842-8000  
FAX 817-842-8100

---

## 4 – Unit Activation

1. *Face the Magnet on the 2WMB-LG case.*
2. *Remove the magnet after 5 seconds.*

