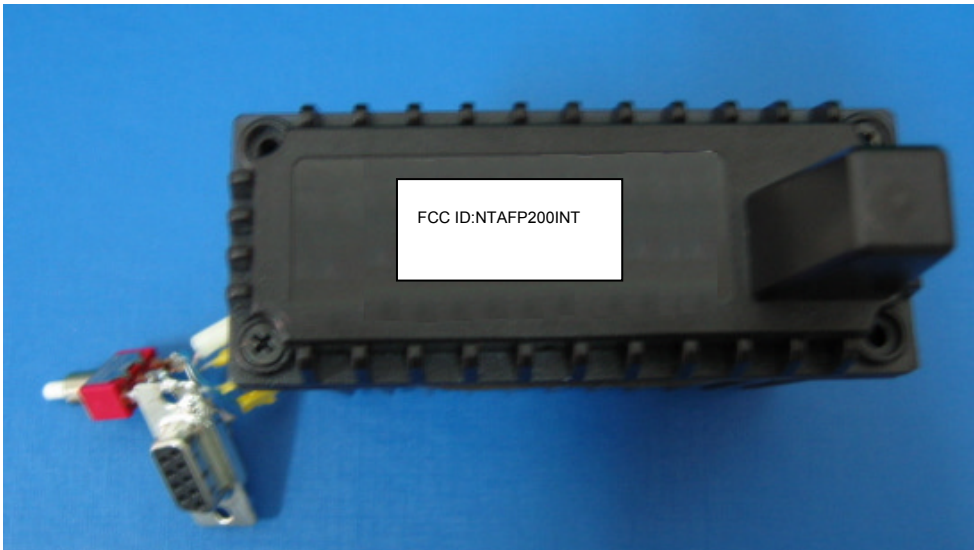


Label location on top side of FP200INT

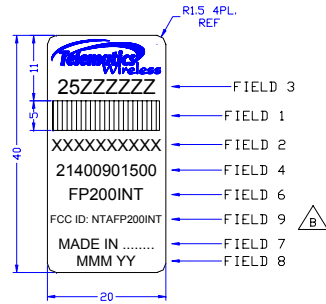


PROPRIETARY INFORMATION
 THIS DOCUMENT CONTAINS PROPRIETARY INFORMATION OF TELEMATICS WIRELESS. IT IS TO BE KEPT CONFIDENTIAL AND NOT TO BE DISCLOSED TO ANY OTHER PARTY WITHOUT THE WRITTEN PERMISSION OF TELEMATICS WIRELESS. IT IS TO BE DESTROYED OR RECYCLED IN ACCORDANCE WITH THE COMPANY'S POLICY ON ENVIRONMENTAL PROTECTION.

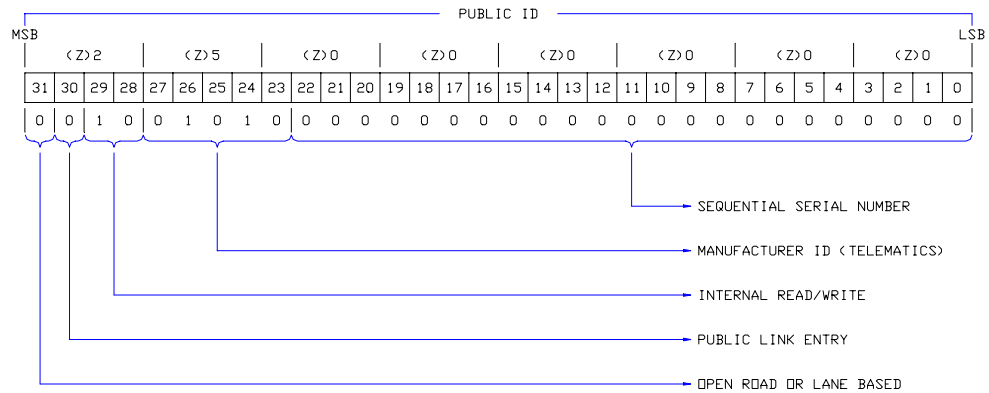
NOTES:

- MATERIAL: WHITE POLYESTER SELF ADHESIVE FILM.
(SUCH AS 'WP' MADE BY EPC)
- BAR CODING SHALL BE ACCORDING TO CODE 128 SUBSET C.
- CHARACTERS SHALL BE BLACK, FONT HELVETICA, STYLE TO BE NORMAL.
- MARKING: HIGH DURABILITY AND SOLVENT RESISTANCE BLACK MARKING
(USING THERMAL TRANSFER BLACK RIBBON SUCH AS 'RHD' MADE BY EPC).
- THE LABEL MATERIAL SHALL BE CAPABLE OF WITHSTANDING A TEMPERATURE RANGE OF -45°C TO +100°C.
- THE ADHESIVE SHALL BE APPROPRIATE FOR AFFIXING THE LABEL TO SURFACES SUCH AS GLASS EPOXY, ALUMINUM, PLASTIC AND ALLOW THE LABEL TO BE REMOVED QUICKLY WITHOUT LEAVING ADHESIVE TRACES ON THE SURFACE.
- LABELS WILL BE SUPPLIED ON ROLLED BACKING PAPER.
- FIELDS DISCRPTION:
 FIELD 1: BAR CODE OF FIELD 2.
 FIELD 2: BAR CODE DISPLAY: (10 DECIMAL CHARACTERS)
 CHARACTERS ARE CONSECUTIVE NUMERICAL
 PUBLIC ID (DEC) (XXXXXXXXXX).
 FIELD 3: PUBLIC ID (HEX) (ZZZZZ) IS THE TRANSFORMATION
 TO HEXADECIMAL NUMBER OF PUBLIC ID (DEC).
 (XXXXXXXXXX OF FIELD 2).
 FIELD 4: TELEMATICS PRODUCT PART NUMBER.
 FIELD 6: PRODUCT MODEL.
 FIELD 7: COUNTRY OF ORIGIN (MADE IN).
 FIELD 8: MANUFACTURING DATE REPRESENTED BY MMM YY
 (JAN, FEB, MAR, APR, MAY, JUN, JUL, AUG, SEP, OCT, NOV, DEC).
 FIELD 9: FCC ID.
- THE FOLLOWING INFORMATION WILL BE PROVIDED TO THE MANUFACTURER IN EACH PURCHASING ORDER:
 -STARTING DATE OF PRODUCTION
 -MONTHLY QUANTITY
 -STARTING PUBLIC ID (DEC) (FIRST XXXXXXXXXXXX)
 -COUNTRY OF ORIGIN (.....)
 PURCHASER WILL RECEIVE THE INFORMATION FROM ENGINEERING DEPARTMENT.

REV	Δ	DESCRIPTION	CHNGD SHEET	E.C.N	DATE	DRAWN	CHECKED
A				069	07/09/04		
B		RECORD FCC ID NTAFP200INT EDITED TO ONE LINE		090	06/02/05	M.K.	G.F.K.



ACTUAL SIZE
(EXAMPLE)



BAR CODE RANGE

LIMITS	FIELD 3		FIELD 2 BAR CODE DISPLAY
	PREFIX	SERIAL NUMBER	PUBLIC ID (DEC)
MIN	25	000000	0620756992
MAX	25	7FFFFFFF	0629145599

NO.	PART NO.	NAME	DESCRIPTION	U/M	QTY	NOTES
UNLESS OTHERWISE SPECIFIED:		INTERNAL SEAL BAR CODE LABEL				
ALL DIMENSIONS ARE IN MM		PROCESSING LEVEL				
TOLERANCES: LINEAR ±0.5 ANGLES ±1°		OPERATION				
ROUGHNESS: √ √ √ √		CATALOG NO.				
PROB/PROJ: DSRC		DESIGNED M.K. 07/09/04				
		CHECKED Y.L. 07/09/04				
		APPROVED A.S. 07/09/04				
		G.A. Z.T. 08/09/04				
SCALE: 2 : 1		SHEET/OF 1/1				