

VISTEON  
VOICE  
TECHNOLOGY  
TM



\*MLN5000000\*

FCC ID: NT807NBTHFA IC ID: 3043A-07NBTHFA

VP7ASF-14B409-DB

H002

061506

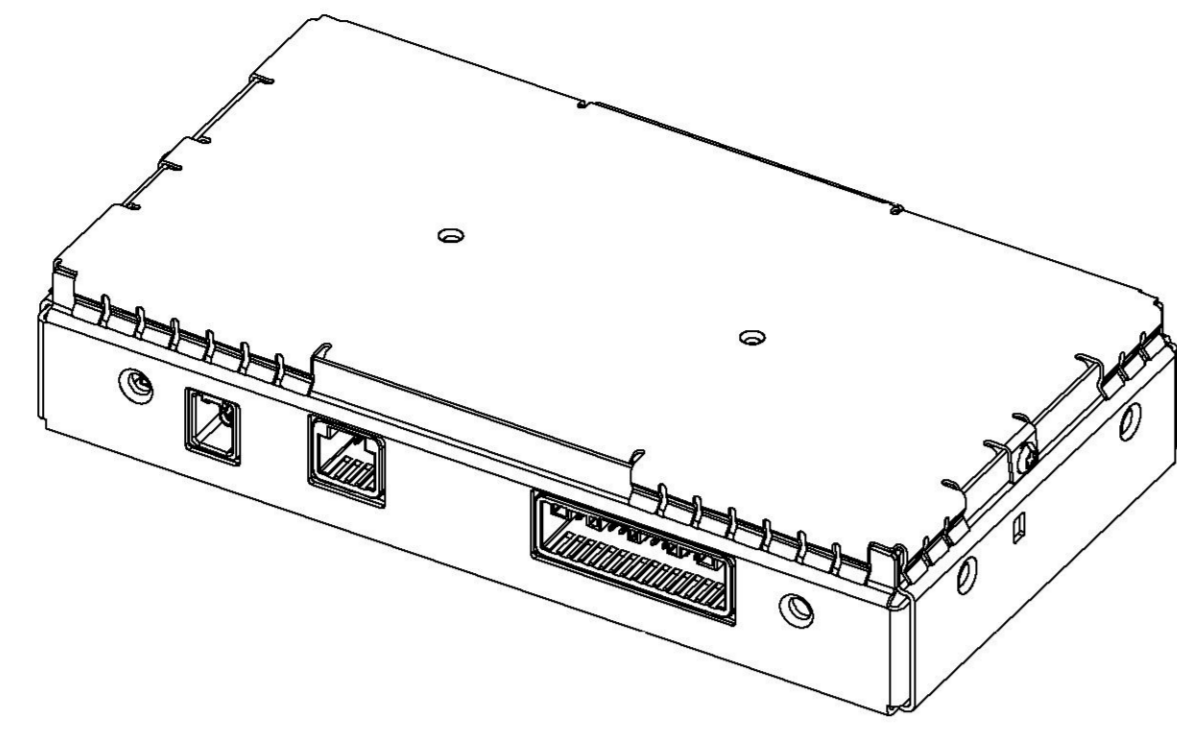
Z

S001

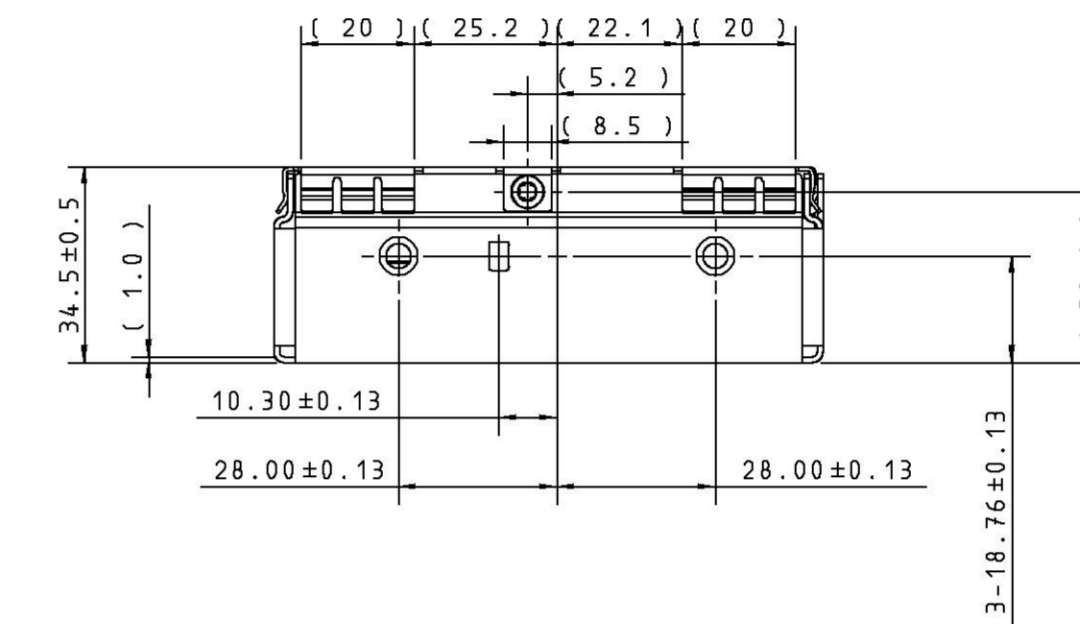
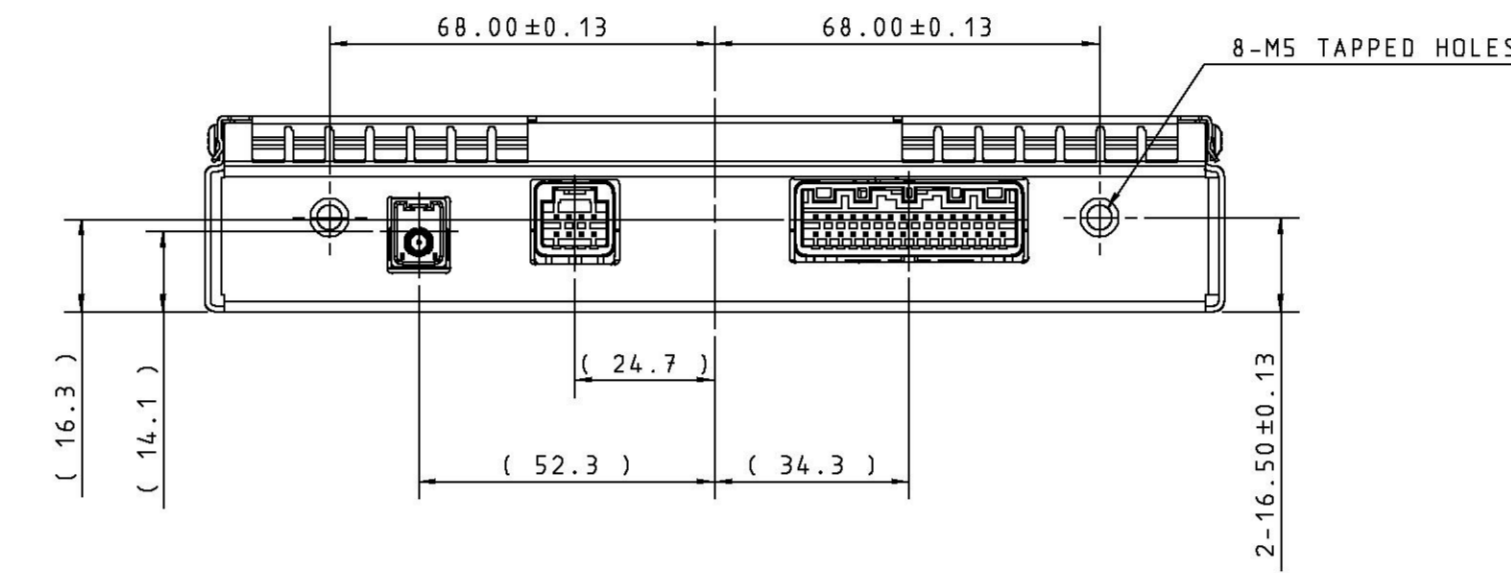
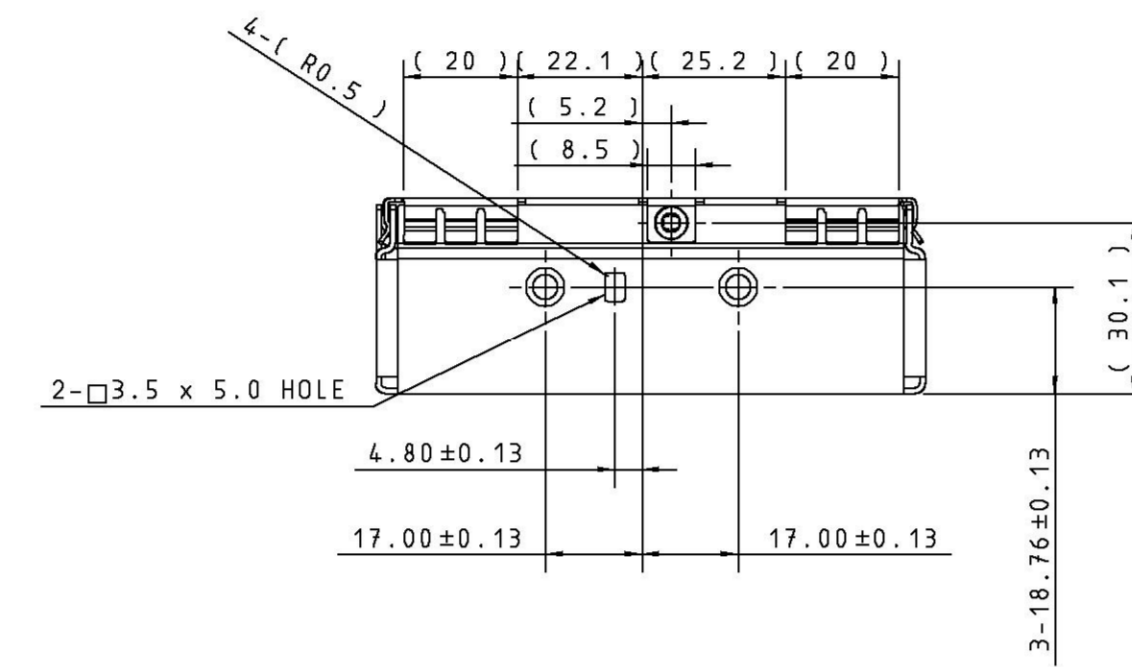
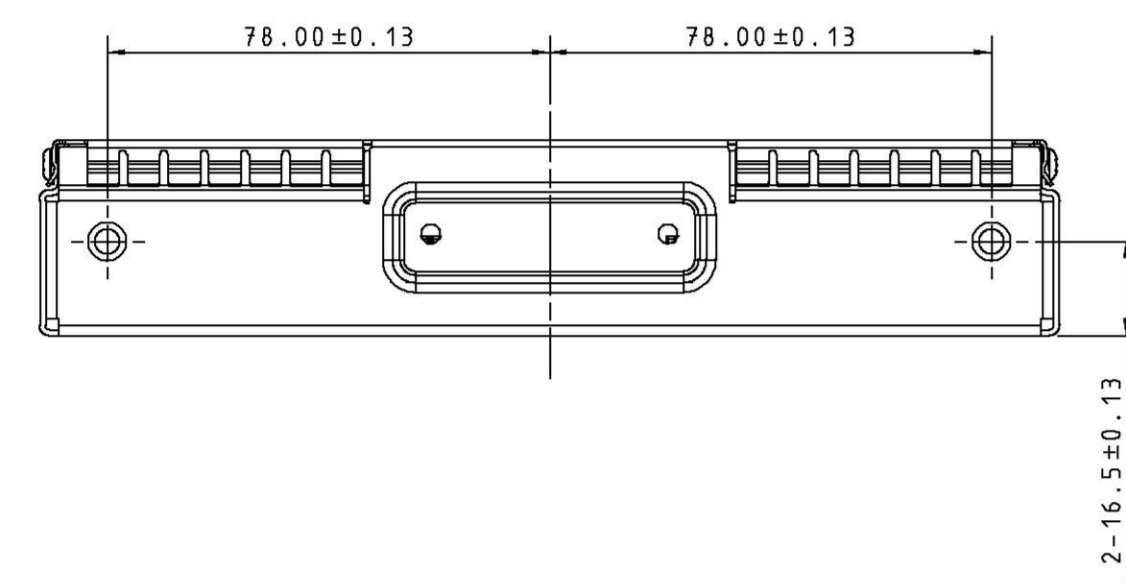
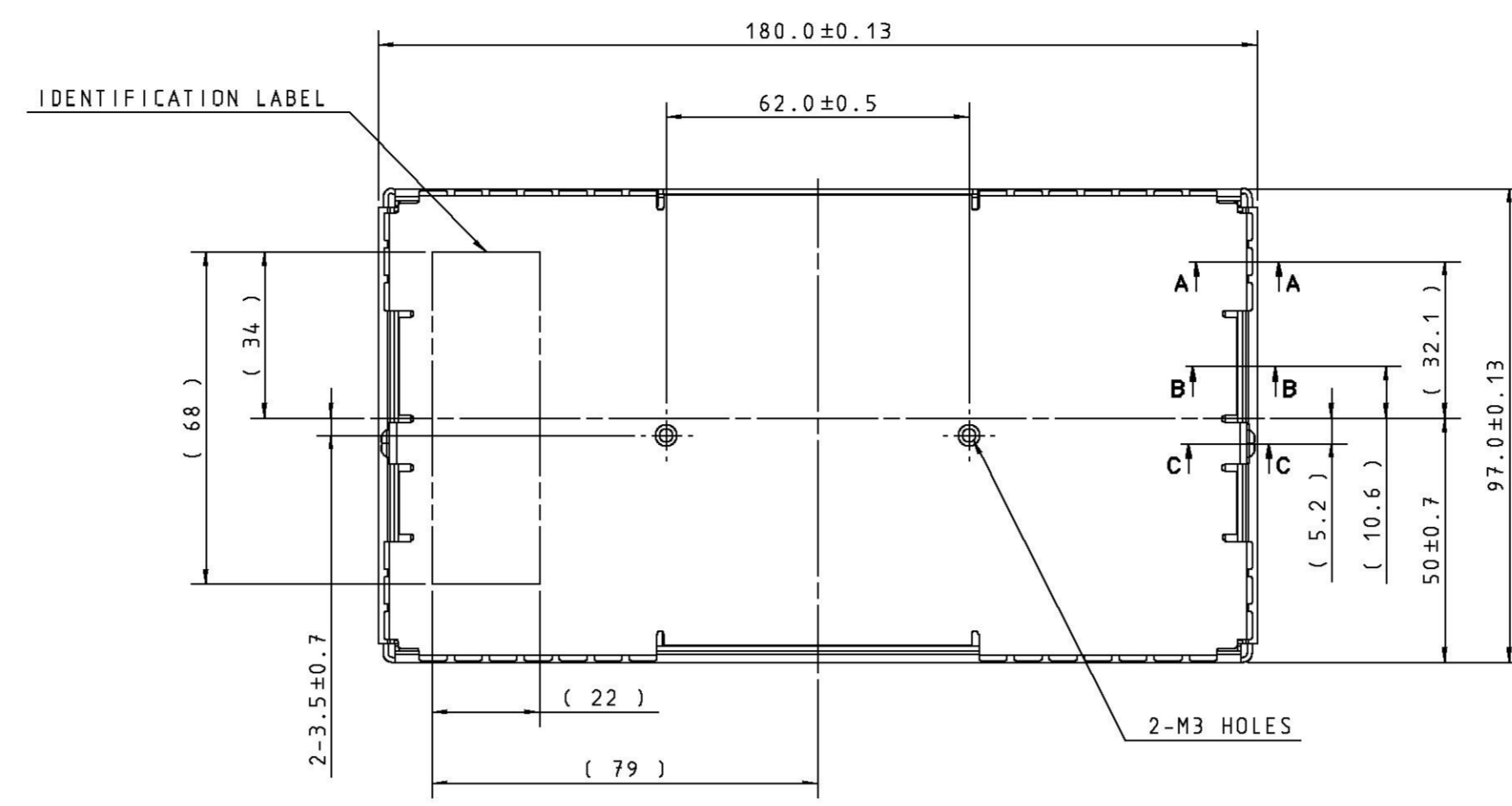
Made In MEXICO

28335-JA000

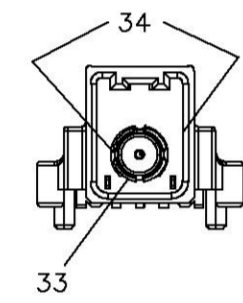
ADPT UNIT-TEL



POWER CONT UNIT-TEL (WITH CAN)  
28383-JK600-PF

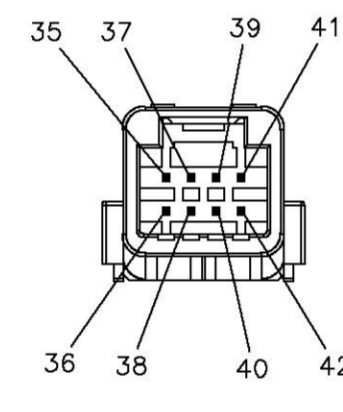


This is a pin-out diagram of the BTHF Bluetooth RF connector. This view is from the outside of the module, looking into the connector as it is mounted on the BTHF module.



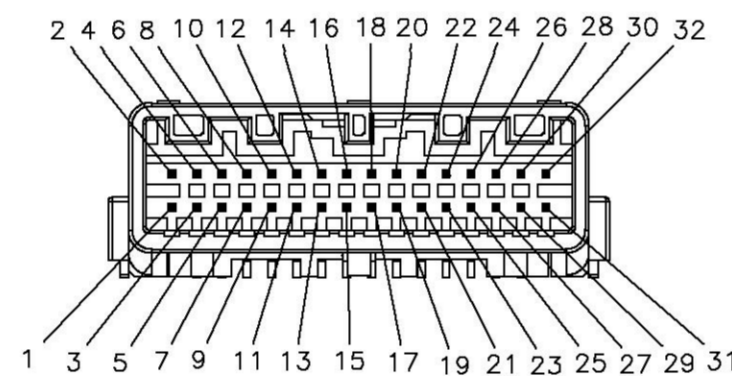
BLUETOOTH RF CONNECTOR (PCF00083-A, BOARD SIDE)

This is a pin-out diagram of the BTHF 8-way connector. This view is from the outside of the module looking into the connector as it is mounted on the BTHF module. Used in 28383-JK600-PF only.



8-WAY CONNECTOR (PCB00111-A, BOARD SIDE)

This is a diagram of the BTHF connector. This view is from the outside of the module, looking into the connector as it is mounted on the BTHF module.



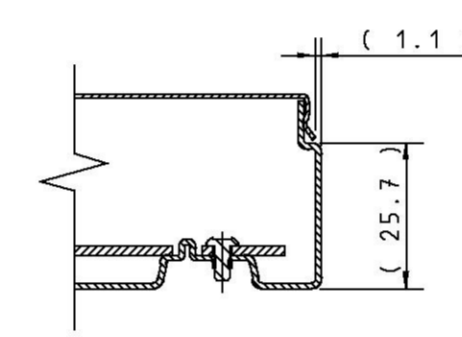
32 WAY MDL MAIN CONNECTOR (NCB00053-A, BOARD SIDE)

MATES WITH GT16C-1S-HU	
33 BT ANT	34 BT SHIELD

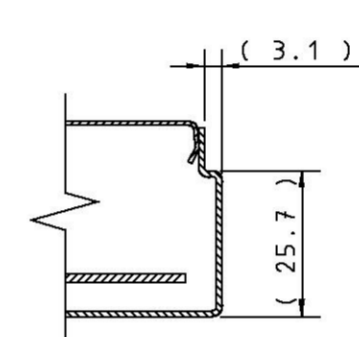
MATES WITH TYCO 1376352			
35 CAN H1	36 CAN L1		
37 CAN Shield 1	38 CAN Shield 2		
39 CAN Jumper 1	40 CAN H2		
41 CAN Jumper 2	42 CAN L2		

MATES WITH TYCO 1318747-1			
1 BATT	2 ACC		
3 IGN	4 GND		
5 AUDIO SHIELD	6 MIC_SHLD		
7 MIC_IN+	8 MIC_IN-		
9 AUDIO_OUT+	10 AUDIO_OUT-		
11 MUTE_CONTROL	12 LAD_IN1		
13 LAD_IN2	14 LAD_IN_GND		
15 IND1	16 NC		
17 LAD_OUT1	18 LAD_OUT2		
19 LAD_OUT_GND	20 CONT1		
21 CONT2	22 CONT3		
23 CONT4	24 CONT5		
25 NC	26 NC		
27 NC	28 SPEED_SIGNL		
29 MIC_PWR	30 NC		
31 NC	32 NC		

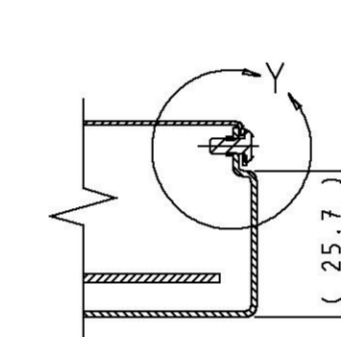
#27, 30, 31, 32 RESERVED FOR MANUFACTURING  
NC: DO NOT CONNECT



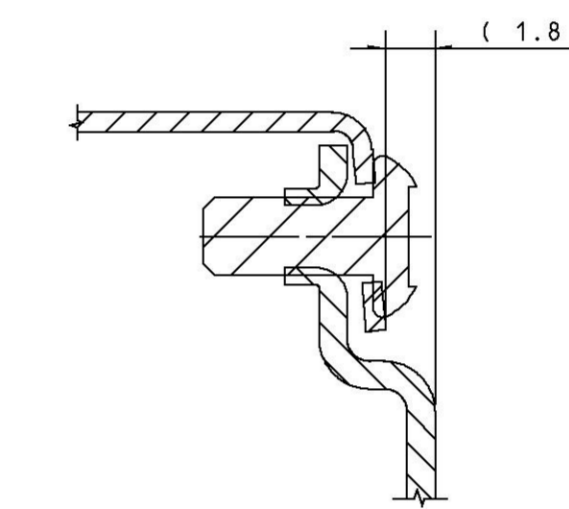
SECTION A-A



SECTION B-B



SECTION C-C



VIEW IN CIRCLE Y  
SCALE: 5:1

>G41 UNLESS OTHERWISE SPECIFIED

THE LETTER/NUMBER CODE PRECEDING ANY NOTE IS FOR CAD NOTE IDENTIFICATION AND RETRIEVAL ONLY

>GE3 ENGINEERING APPROVAL OF PRODUCTION SAMPLES FROM EACH SUPPLIER IS REQUIRED PRIOR TO AUTHORIZATION OF INITIAL PRODUCTION

>GE4 ENGINEERING APPROVAL MUST BE OBTAINED BEFORE ANY CHANGE IN MATERIAL - CONSTRUCTION - OR PROCESSING CAN BE MADE

>GM2 MATERIAL CONTROL FOR BLACK/GREY BOX ITEM PER NES-M0301

TOP MATERIAL: LOW CARBON GALVANIZED STEEL PER ASTM A653/A653M COATING WEIGHT G30 OR Z120 .60 +.12/-0.0 THICK MINIMIZED SPANGLE

BOTTOM MATERIAL: LOW CARBON GALVANIZED STEEL PER ASTM A653/A653M COATING WEIGHT G30 OR Z120 1.00 +.15/-0.0 THICK MINIMIZED SPANGLE



THIS DRAWING AND ANY INTELLECTUAL PROPERTY RIGHTS THEREIN ARE PROPERTY OF VISTEON CORPORATION AND NO LICENSES ARE GRANTED UNDER THOSE RIGHTS.

SUPPLEMENTAL DRAWING		SHEET NO.
NISSAN DWG NO.	28383-JK600-PF	06 1
DWG NO.	VP7ASF-14B409-BB	06 1

POWER CONT UNIT-TEL (CAN)	28383-JK600-PF	DWG NAME	MOD ASY-INTRFC WIRLS
---------------------------	----------------	----------	----------------------