

## Appendix B: Photographs

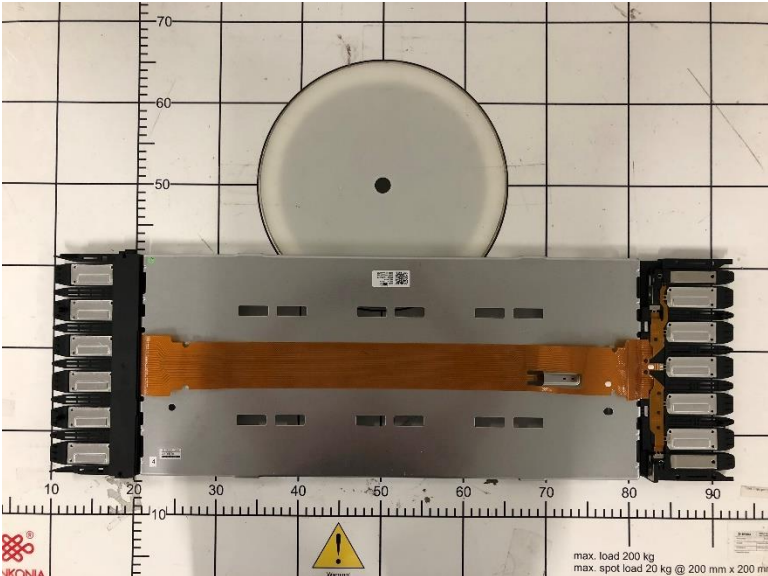


Figure B1. Radiated sample (S/02) – Top view



Figure B2. Radiated sample (S/02) – Antenna Port

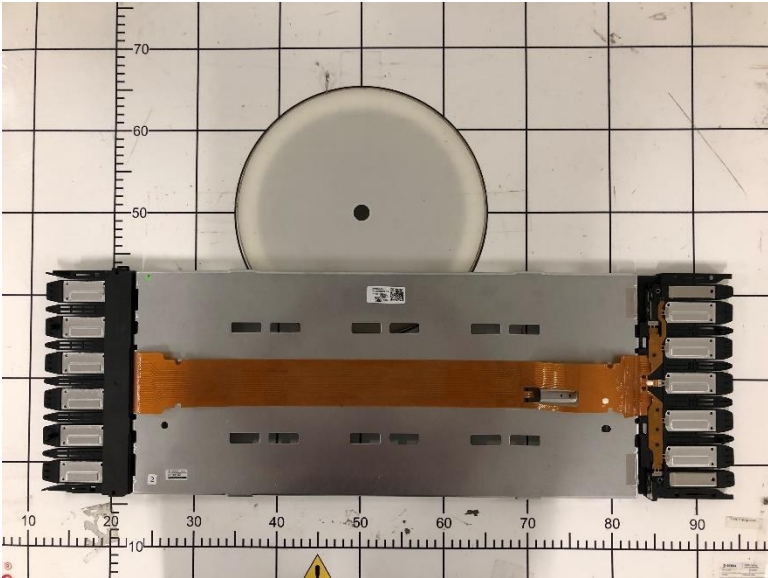


Figure B3. Conducted sample (S/01) – Top view

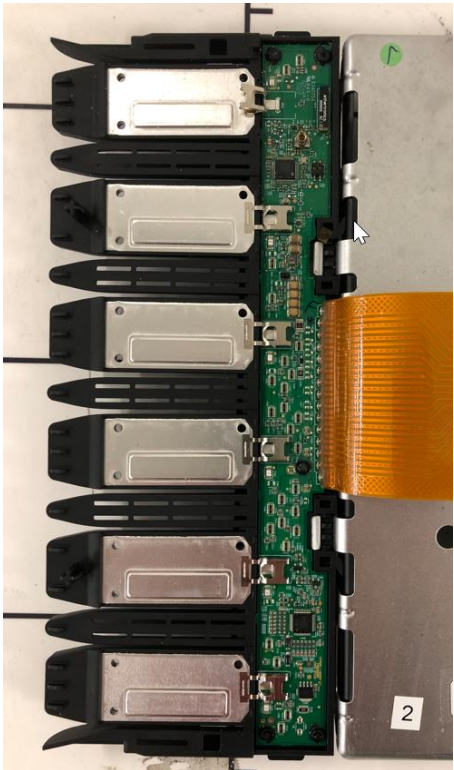


Figure B4. Conducted sample (S/01) – Antenna port, detail view



Figure B5. Conducted setup – RF equipment

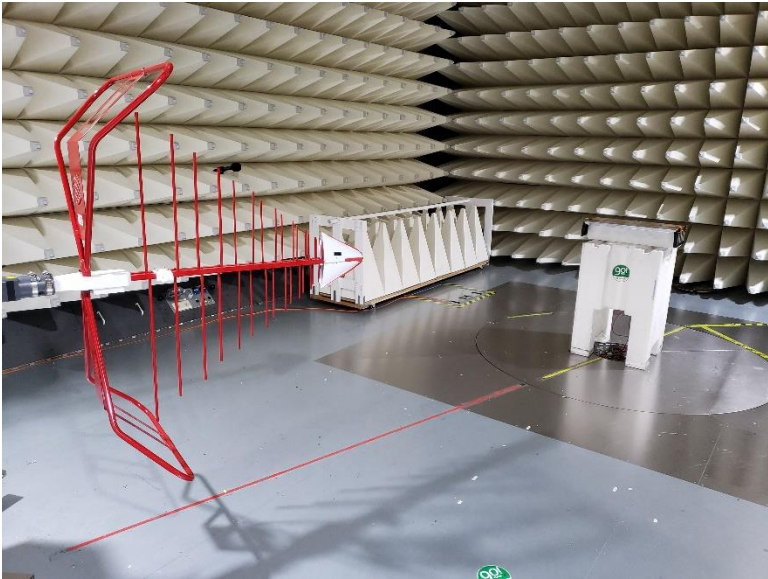
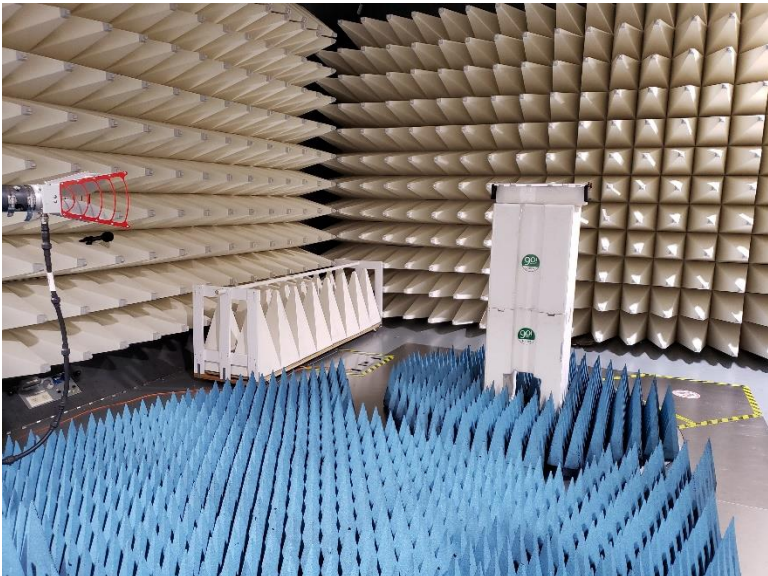
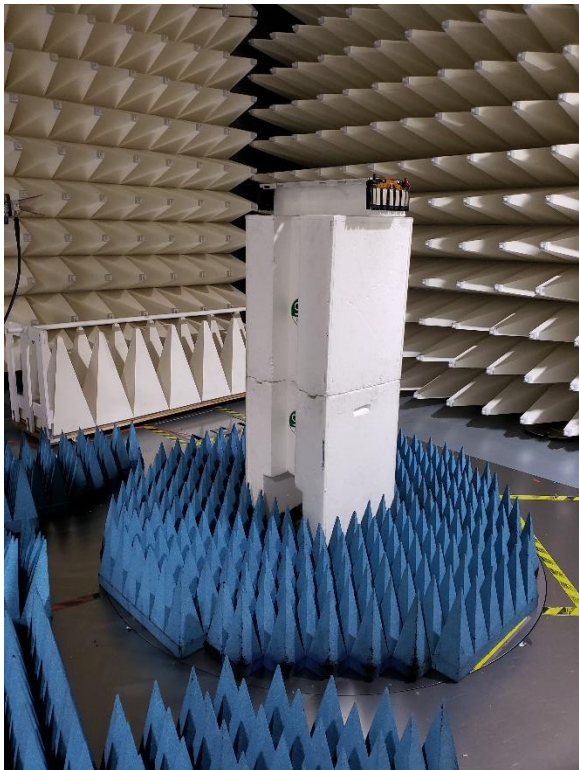


Figure B6. Radiated emission Setup – Low Range 30 to 1000 MHz





**Figure B7:** Radiated emission Setup – High Range 1 to 18 GHz



**Figure B8:** Radiated emission Setup – High Range 18 to 26 GHz