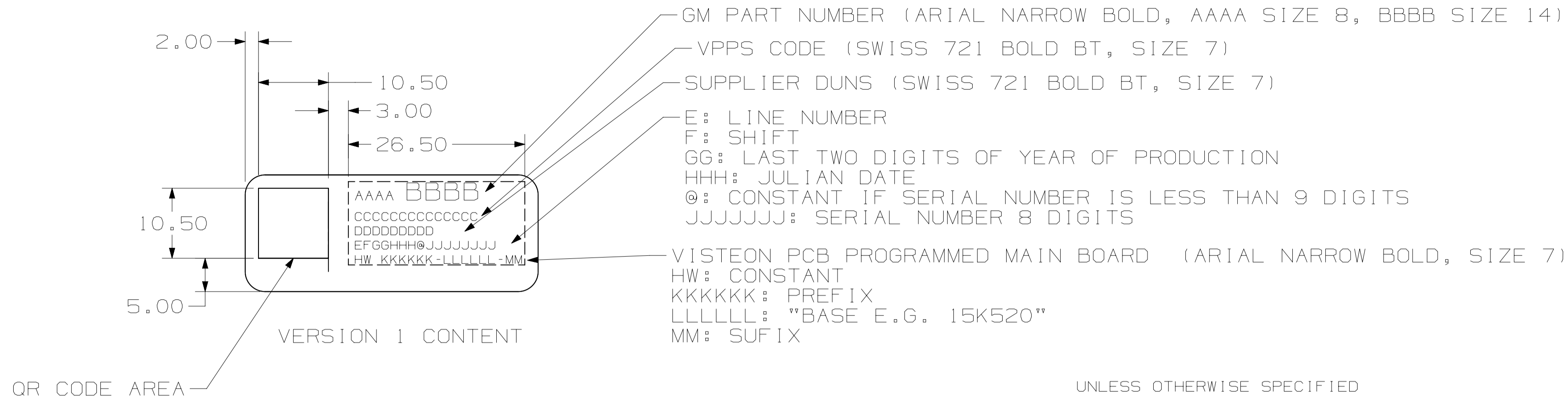
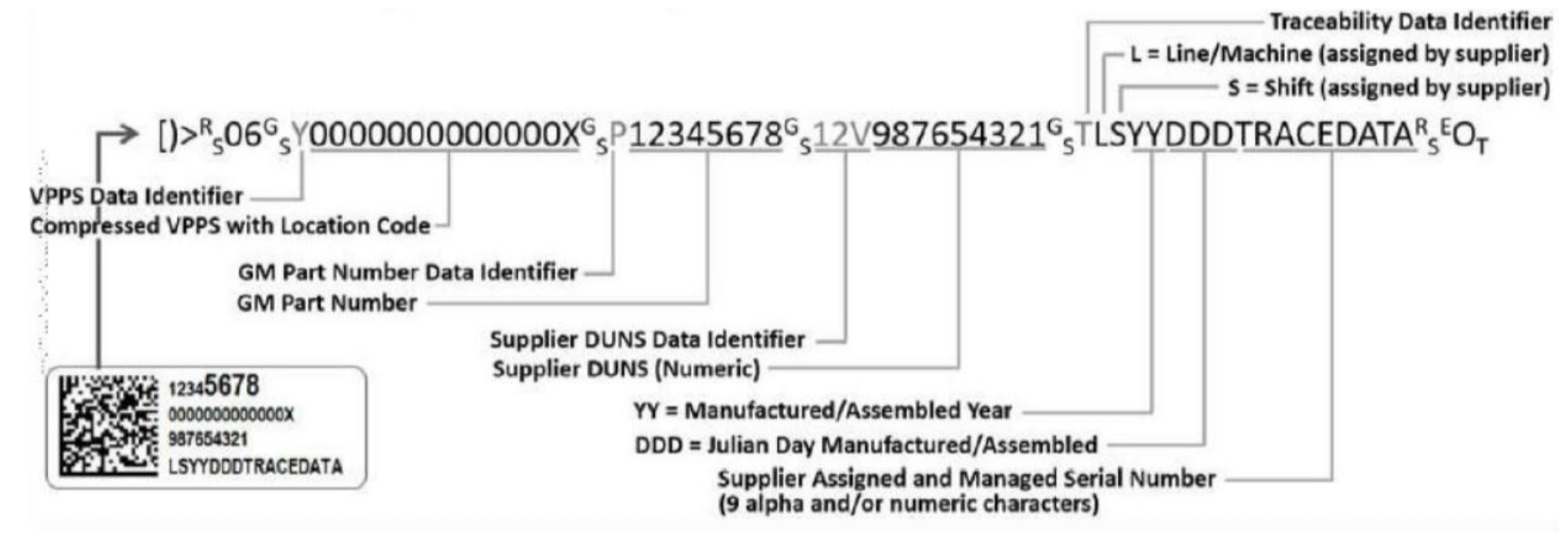


(E2)

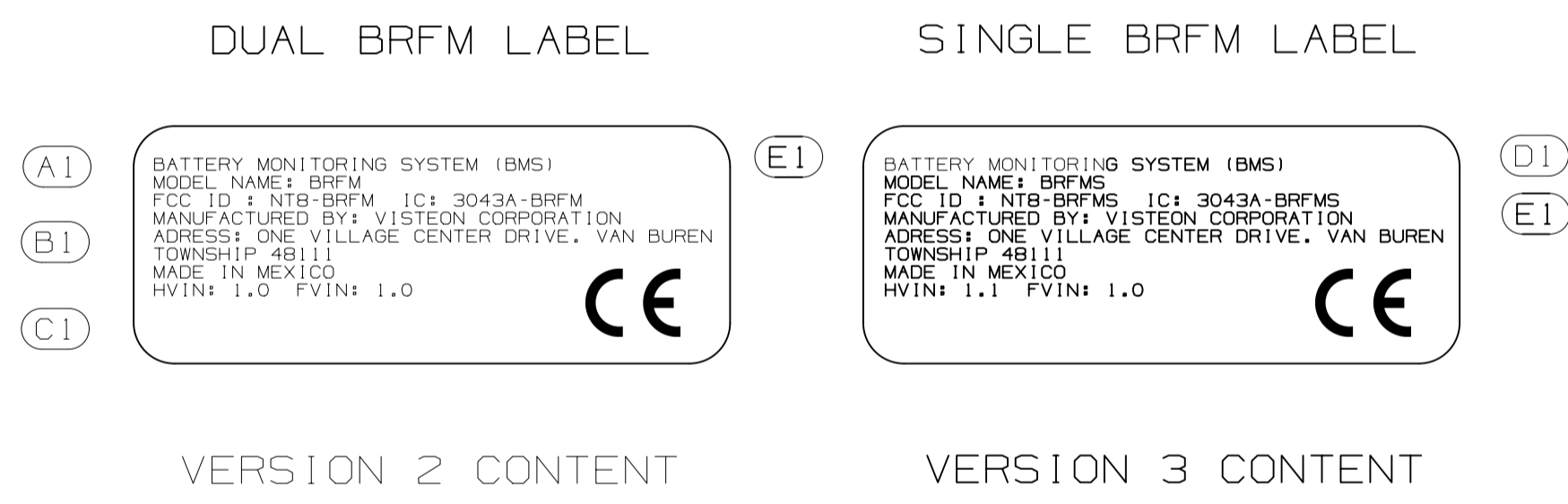
LTRS	REVISIONS		
	DATE	ORIGINATOR	REVIEWER
INITIAL RELEASE CN00124988			
20210531	CPRIETO2	MSANTAN3	FVILLELA
A1 UPDATED LABEL CONTENT CN00126165			
20210910	GCASSIAN	CPRIETO2	FVILLELA
B1 UPDATED LABEL CONTENT CN00126452			
20210929	GCASSIAN	CPRIETO2	FVILLELA
C1 UPDATED LABEL CONTENT CN00126990			
20211108	GCASSIAN	CPRIETO2	FVILLELA
D1 ADDED LABEL VERSION 3 CN00127896			
20220222	GCASSIAN	ALAVARA2	FVILLELA
E1 UPDATED LABEL CONTENTS E2 UPDATED DRAWING VIEWS CN00129156			
20220718	APIMENTE	ALAVARA2	TSOSA5



UNLESS OTHERWISE SPECIFIED  
 VISTEON APPROVAL OF PRODUCTION SAMPLES IS REQUIRED PRIOR TO AUTHORIZATION OF INITIAL PRODUCTION.  
 VISTEON APPROVAL MUST BE OBTAINED BEFORE ANY CHANGE IN MATERIAL, CONSTRUCTION, PROCESSING OR APPEARANCE CAN BE MADE  
 MANUFACTURER OF THIS PART OR ASSEMBLY TO ENSURE THAT ALL APPLICABLE FUNCTIONAL, APPEARANCE AND LIGHTING REQUIREMENTS ARE MAINTAINED THROUGHOUT PRODUCTION AT THE LEVEL THAT EXISTED WHEN VISTEON APPROVAL WAS GIVEN FOR INITIAL PRODUCTION  
 MATERIAL: SPECIFICATION SHALL BE REVIEWED BY THE RELEASING ENGINEER. RETAINED BY THE SUPPLIER AND AVAILABLE UPON REQUEST  
 MATERIAL: NON EXPOSED, INTERIOR LABEL PER GMW14573  
 TOP COATED THERMAL TRANSFER IMPRINTABLE WHITE POLYESTER FILM (2 MIL THICK) WITH PERMANENT ADHESIVE.  
 GLOSS FINISH AND THERMAL TRANSFER RECEIVER COAT TO BE PACKAGED ON RELEASE BACKING.  
 DIE CUTS NOT TO IMPEDE RELEASE OF LABEL FROM BACKING.  
 ALL TOLERANCE ±0.63MM  
 PART OR ASSEMBLY MUST BE CAPABLE OF WITHSTANDING A 24 HOUR EXPOSURE TO 85 DEG C WITHOUT ANY DEGRADATION TO APPEARANCE OR FUNCTION. PART MANUFACTURER TO PERFORM THIS TEST  
 BASED IN GM SPEC GMW15862  
 BLANK LABEL TO BE PRINTED EITHER VERSION 1 OR VERSION 2 CONTENT  
 END ITEM MUST HAVE ONE VERSION 1 AND 1 VERSION 2 LABEL.



- (SCIF) VERSION 1 LABEL TO INCLUDE:
1. GM PART NUMBER
  2. VPPS CODE
  3. SUPPLIER DUNS
  4. B1 "JULIANDATE" A "SERIAL"
  5. VISTEON PCB ELEC ASM



THIS DRAWING HAS BEEN PREPARED BY OR ON BEHALF OF VISTEON CORPORATION. VISTEON RETAINS ALL COMMON LAW, STATUTORY AND OTHER RESERVED RIGHTS, INCLUDING COPYRIGHTS. THIS DRAWING SHALL NOT BE USED FOR ANY PURPOSE OTHER THAN PERFORMING SERVICES DIRECTLY OR INDIRECTLY FOR VISTEON, WITHOUT THE EXPRESSED WRITTEN PERMISSION OF VISTEON. UNAUTHORIZED USE, COPYING OR MODIFICATION, INCLUDING THE REMOVAL OF THIS NOTE, MAY CONSTITUTE A VIOLATION OF CIVIL OR CRIMINAL LAWS ENFORCEABLE BY VISTEON OR GOVERNMENTAL AGENCIES. COPYRIGHT © VISTEON CORPORATION (2020)

THIS DRAWING AND ANY INTELLECTUAL PROPERTY RIGHTS THEREIN ARE PROPERTY OF VISTEON CORPORATION AND NO LICENSES ARE GRANTED UNDER THOSE RIGHTS					
DRAFTED IN ACCORDANCE WITH VISTEON ENGINEERING CAD STANDARDS			MUST COMPLY WITH GADSL, VISTEON AND APPLICABLE OEM RESTRICTED SUBSTANCE MANAGEMENT STANDARDS		
ORIGINATOR	DATE	REVIEWER	DATE	ENGINEER	DATE
CPRIETO2	20210531	MSANTAN3	20210531	FVILLELA	20210531
3RD ANGLE PROJECTION	CUSTOMER DATA TYPE			SCALE: 2:1	UNITS: MM
	NX/TCAE			SHT: 1:1	RH/LH: RH/LH
	CUSTOMER NUMBER			DWG SIZE: A3	
GENERAL MOTORS			DIMC	:IS MASTER	
NAME <b>BRFM LABEL SPECIFICATION</b>					
CAD FILE	N/A			DATA TYPE	
DWG FILE	VENAMU-12A661-A.DWG/005			NX11	
DATA LOC	TcUA				
PRODUCT	GM BRFM MY22				
GBC NUMBER	00367727-01				
LEGACY NUMBER	VENAMU-12A661-AA				

