

Appendix B: Photographs

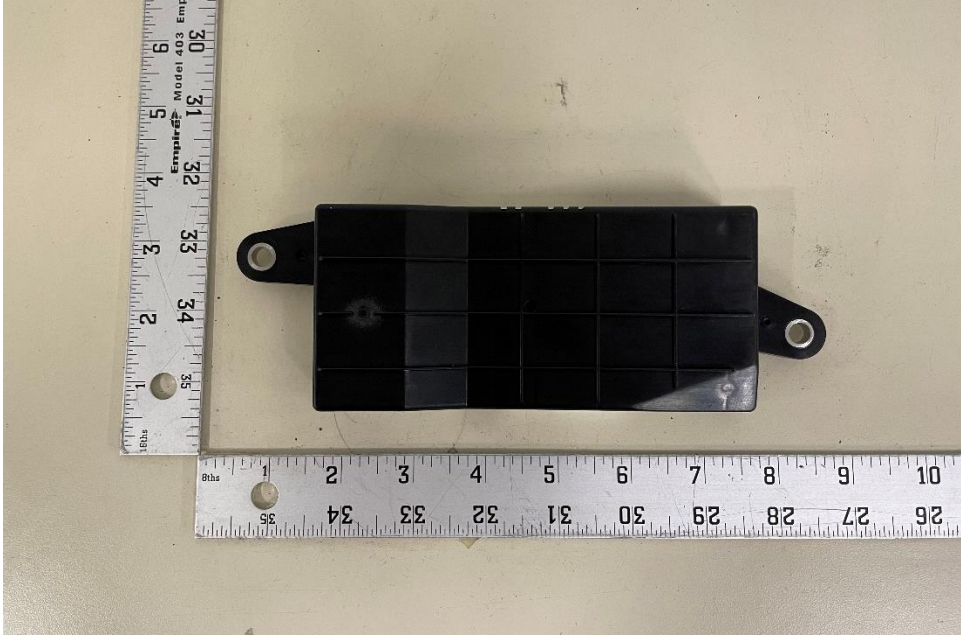


Figure B1: Top view of the DUT

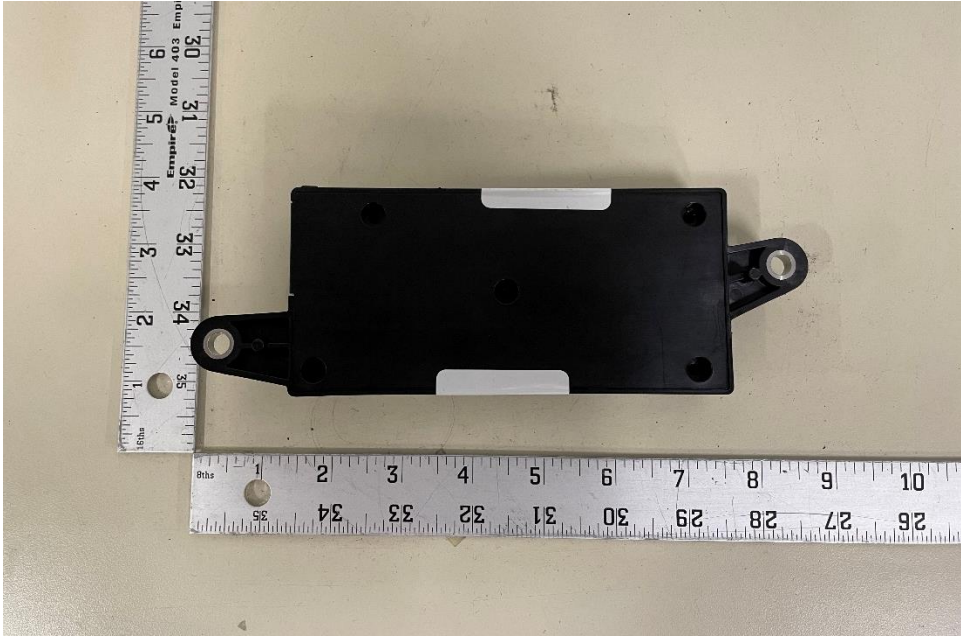


Figure B2: Bottom view of the DUT



Figure B3: Side view of the DUT



Figure B4: Side view of the DUT

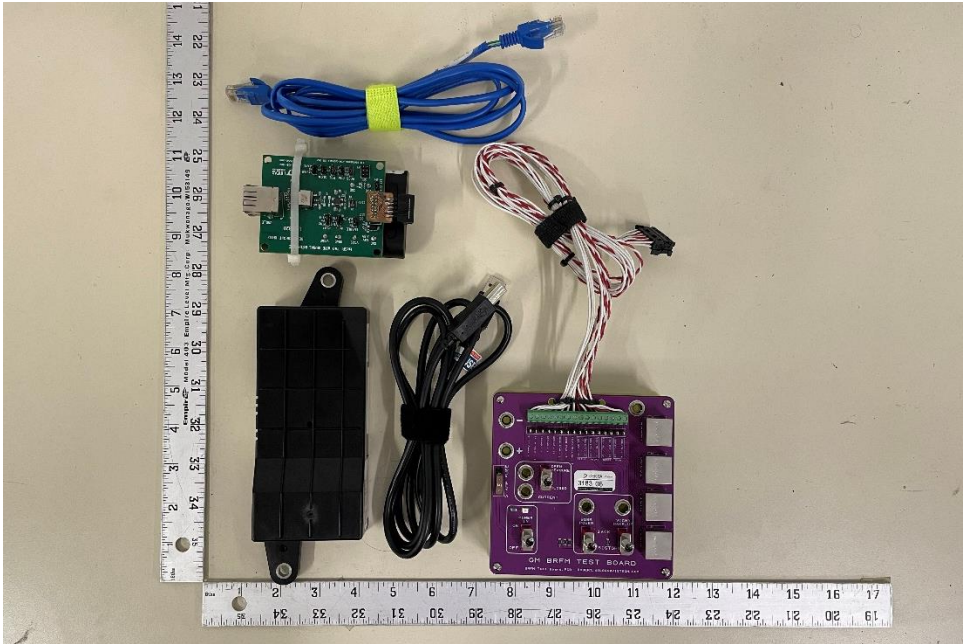


Figure B5: View of the DUT and accessories

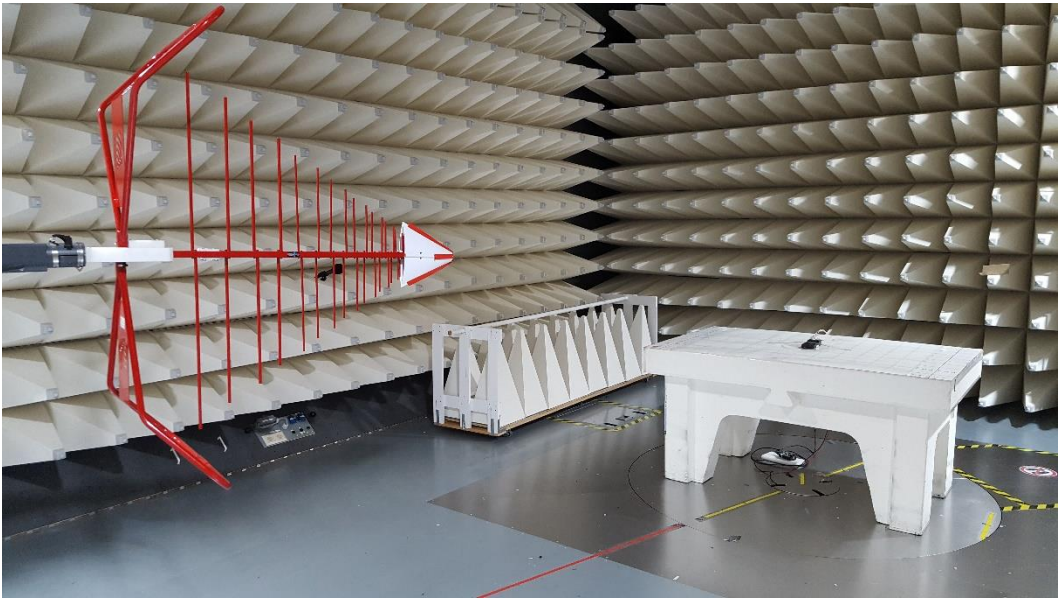


Figure B6: Radiated emission Setup – Low Range 30 to 1000 MHz

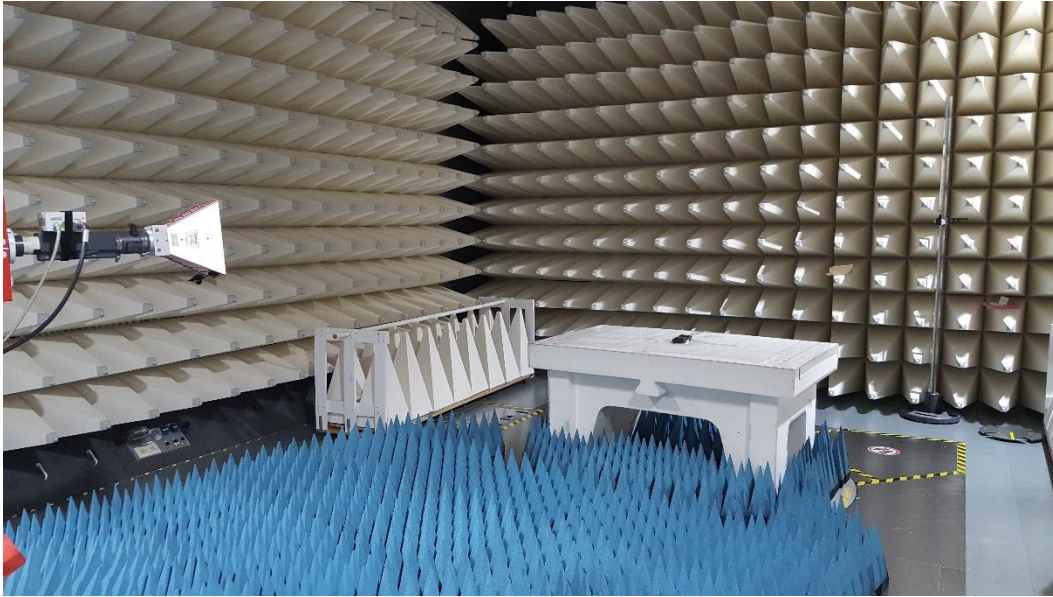


Figure B7: Radiated emission Setup – High Range 1 to 18 GHz