

Appendix B: Photographs



Figure B1. DUT Front and Top view



Figure B2. DUT Rear and Bottom view

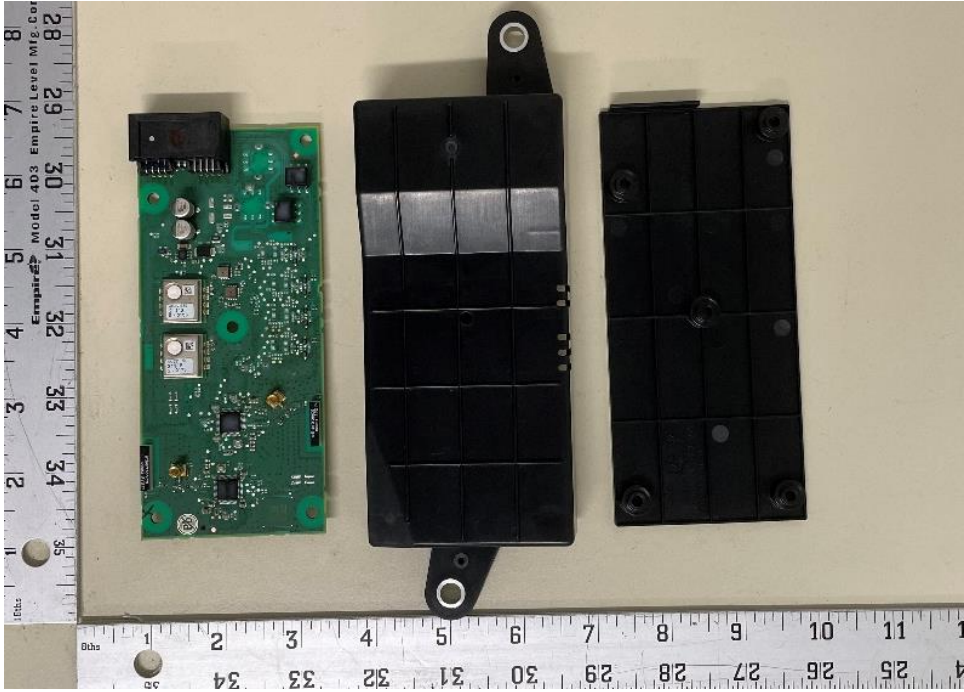


Figure B3. DUT Opened to show interior PCB

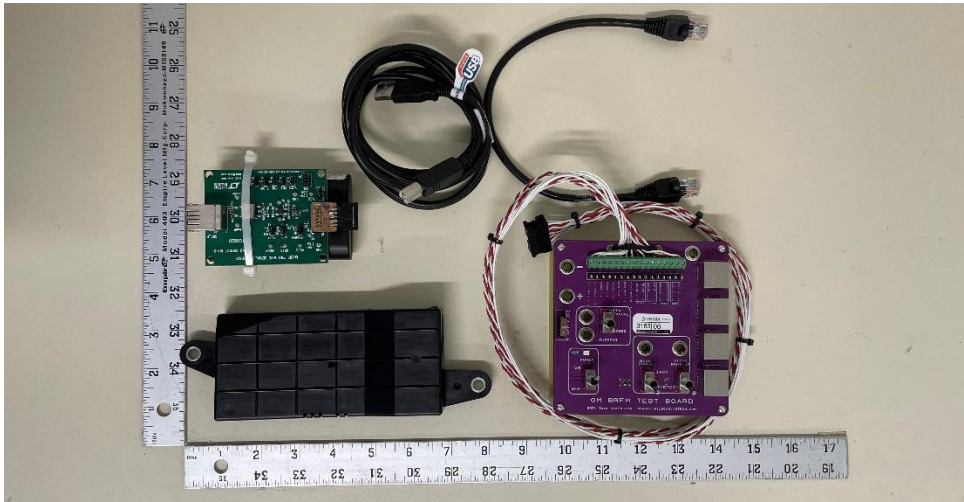


Figure B4. DUT and accessories



Figure B5. Radiated emission Setup 1 – Low Range 30 to 1000 MHz

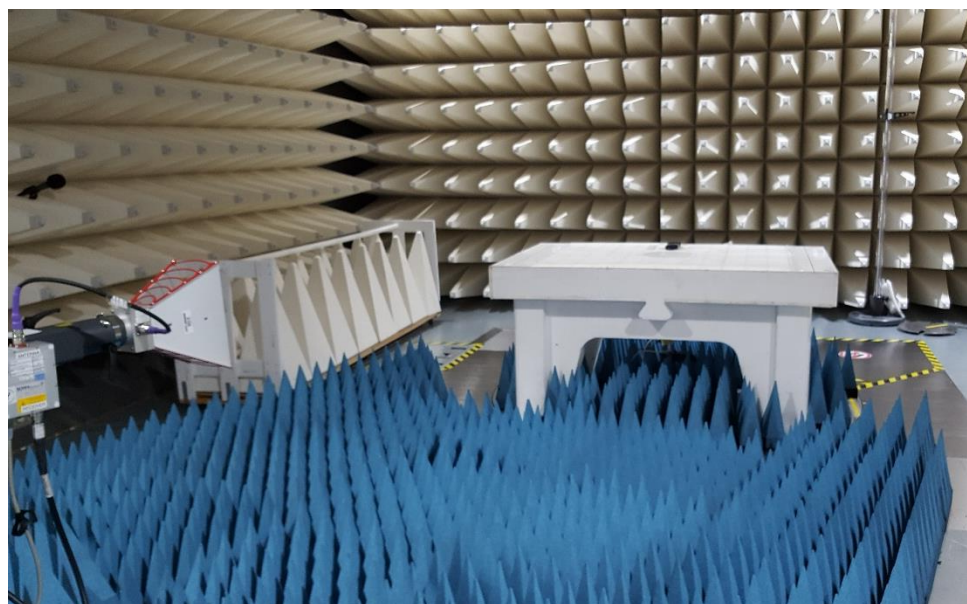


Figure B6. Radiated emission Setup 2 – High Range 1 to 18 GHz

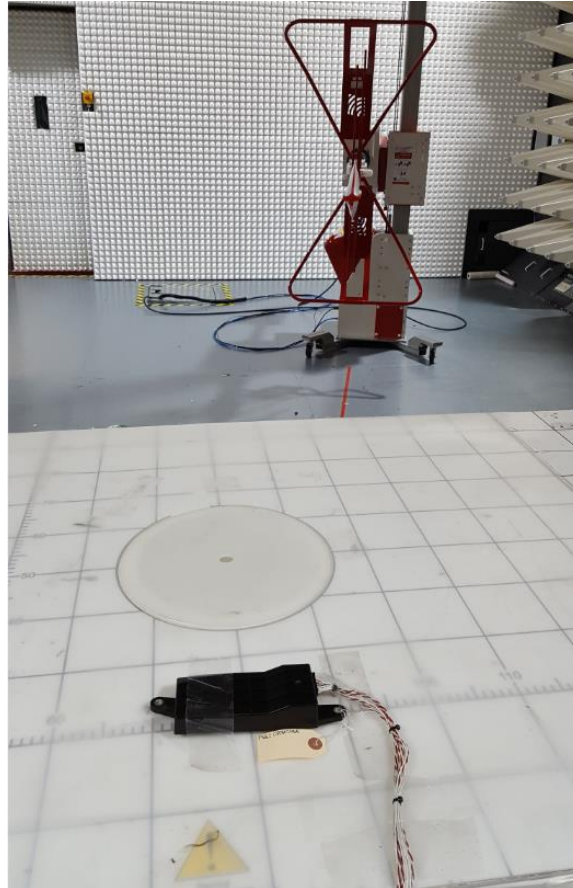


Figure B7. Radiated emission Setup 3 – Low Range 30 to 1000 MHz