







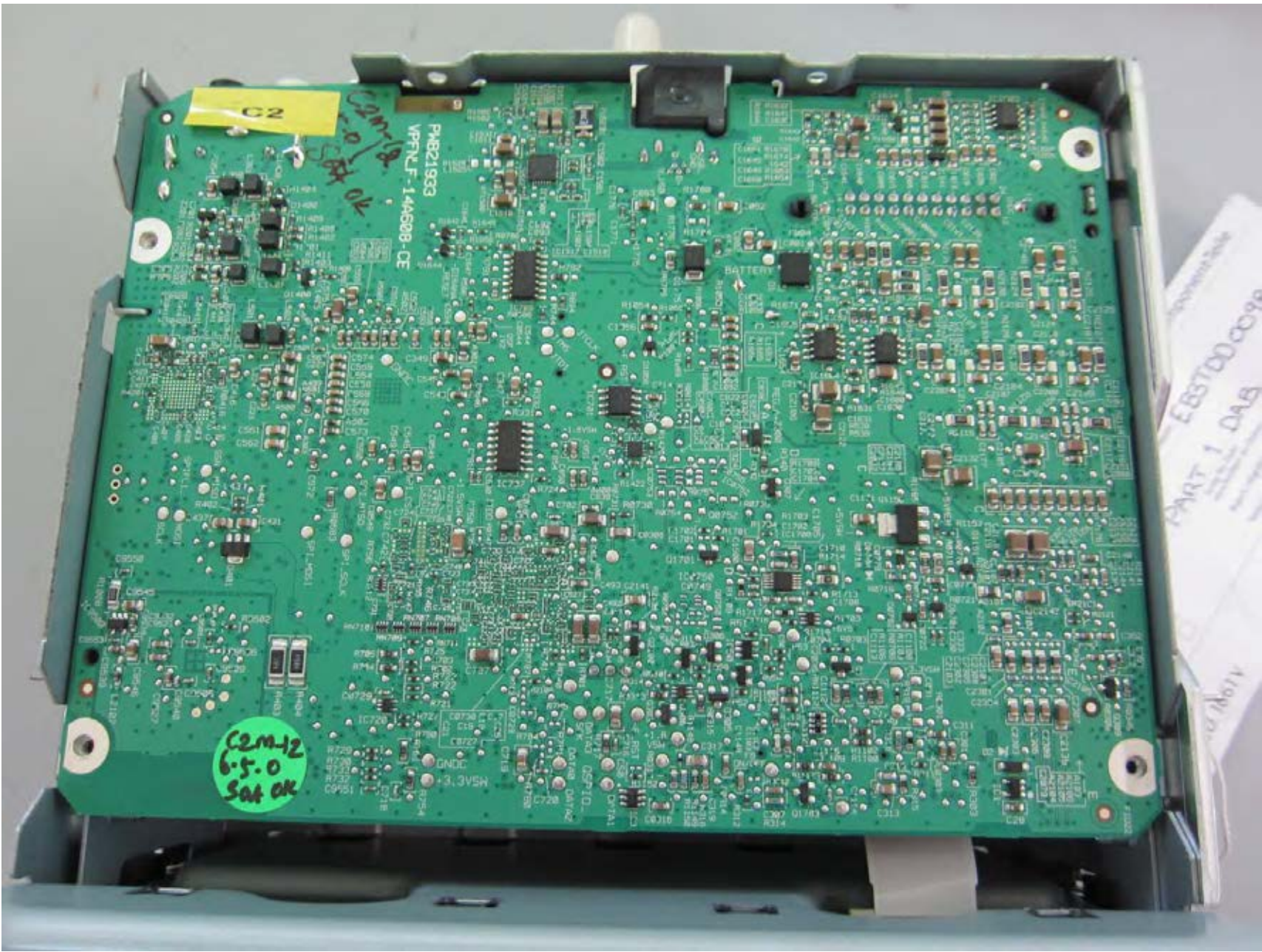
C2

C2M12
6.5.0
Sat OK

Component Zone
EBSTDD0019
PART 1 DAS

P/N: 21323
MPC-1-145288-DC

11/16/14



02

70 Sat OK

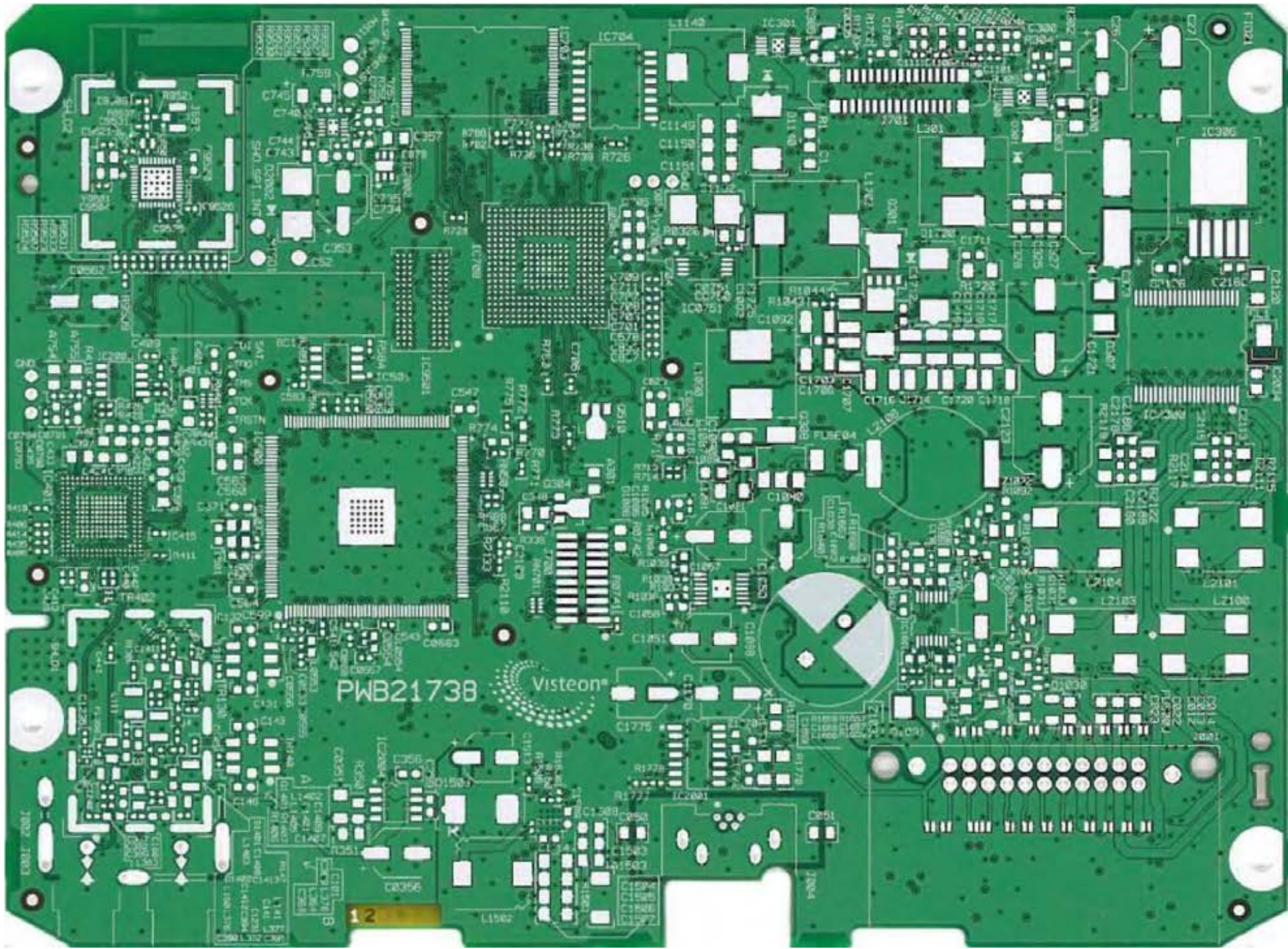
PM821933
VPR.F-14A808-CE

BATTERY

C2M-12
6.5.0
Sat OK

8600001587
BAG 1 (2M)

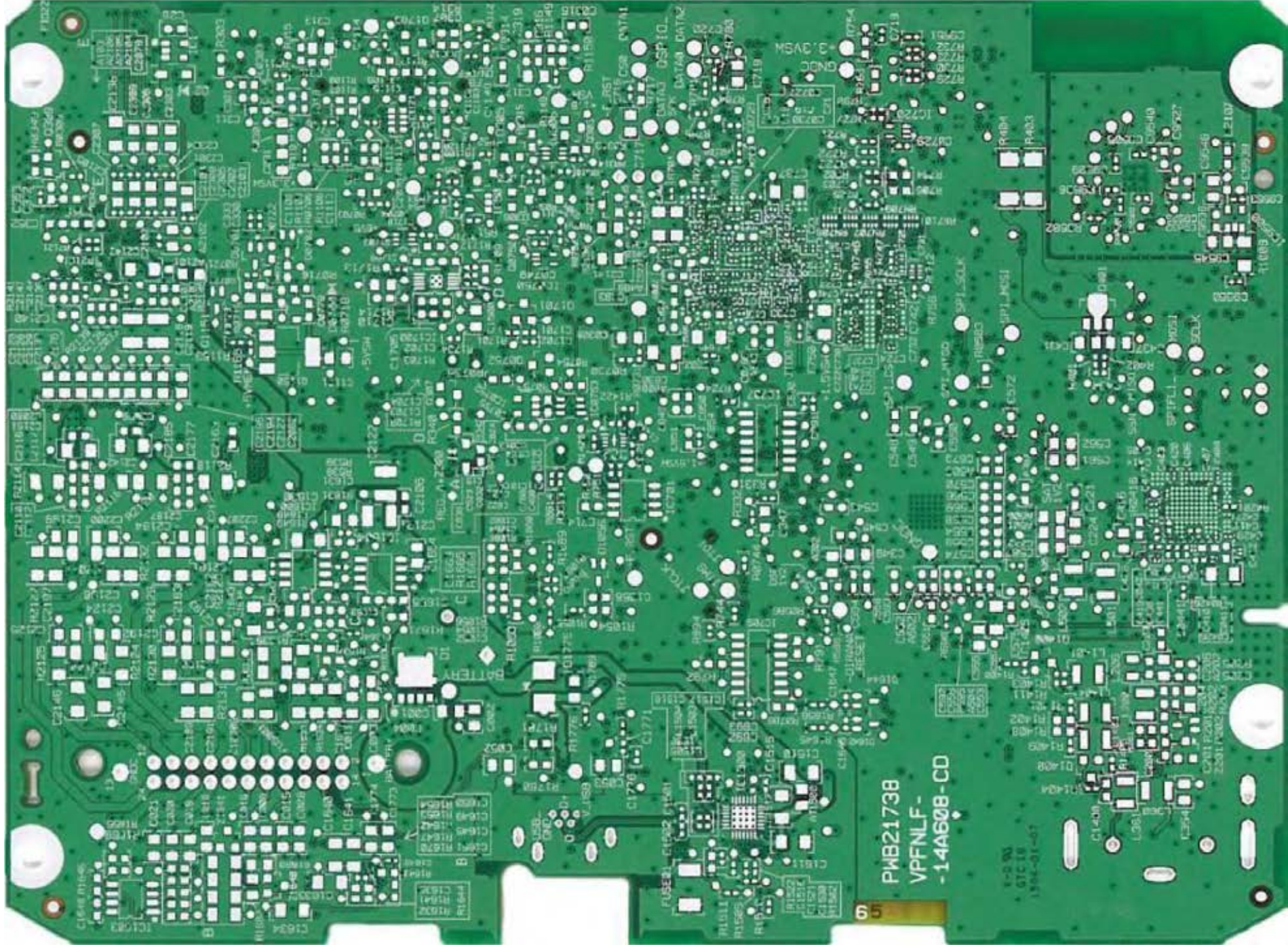
11/9/17



PWB2173B

Visteon

12



PWB21738
VPFNLF-
-14A508-CD

65

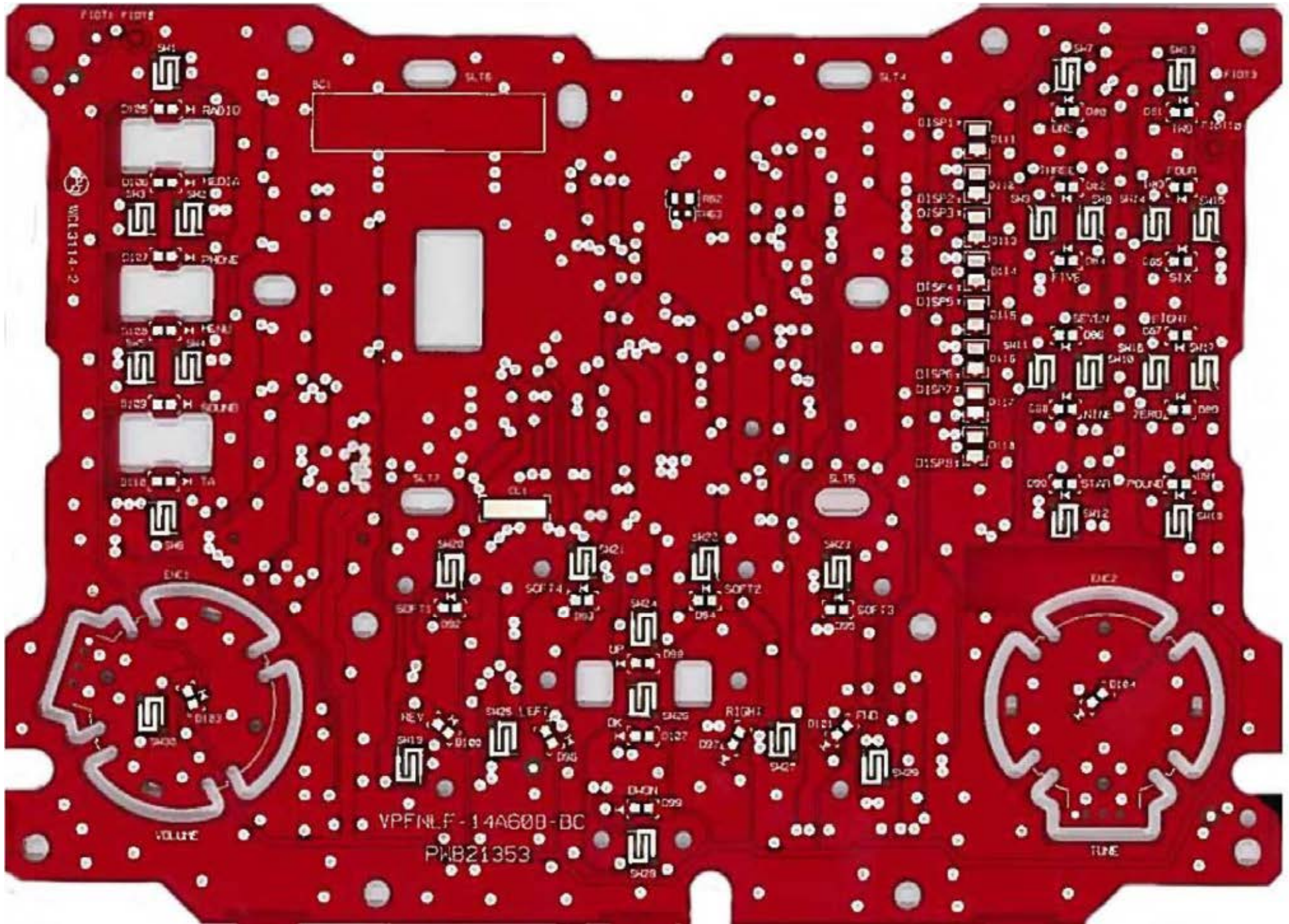
1-0 90
07C 18
1394-01-01

FUSEE1-C1582-C1461

1	0	0	0
2	0	0	0
3	0	0	0
4	0	0	0
5	0	0	0
6	0	0	0
7	0	0	0
8	0	0	0
9	0	0	0
0	0	0	0

PLEASE INVOICE

C1634
C1635
C1636
C1637
C1638
C1639
C1640
C1641
C1642
C1643
C1644
C1645
C1646
C1647
C1648
C1649
C1650
C1651
C1652
C1653
C1654
C1655
C1656
C1657
C1658
C1659
C1660
C1661
C1662
C1663
C1664
C1665
C1666
C1667
C1668
C1669
C1670
C1671
C1672
C1673
C1674
C1675
C1676
C1677
C1678
C1679
C1680
C1681
C1682
C1683
C1684
C1685
C1686
C1687
C1688
C1689
C1690
C1691
C1692
C1693
C1694
C1695
C1696
C1697
C1698
C1699
C1700
C1701
C1702
C1703
C1704
C1705
C1706
C1707
C1708
C1709
C1710
C1711
C1712
C1713
C1714
C1715
C1716
C1717
C1718
C1719
C1720
C1721
C1722
C1723
C1724
C1725
C1726
C1727
C1728
C1729
C1730
C1731
C1732
C1733
C1734
C1735
C1736
C1737
C1738
C1739
C1740
C1741
C1742
C1743
C1744
C1745
C1746
C1747
C1748
C1749
C1750
C1751
C1752
C1753
C1754
C1755
C1756
C1757
C1758
C1759
C1760
C1761
C1762
C1763
C1764
C1765
C1766
C1767
C1768
C1769
C1770
C1771
C1772
C1773
C1774
C1775
C1776
C1777
C1778
C1779
C1780
C1781
C1782
C1783
C1784
C1785
C1786
C1787
C1788
C1789
C1790
C1791
C1792
C1793
C1794
C1795
C1796
C1797
C1798
C1799
C1800
C1801
C1802
C1803
C1804
C1805
C1806
C1807
C1808
C1809
C1810
C1811
C1812
C1813
C1814
C1815
C1816
C1817
C1818
C1819
C1820
C1821
C1822
C1823
C1824
C1825
C1826
C1827
C1828
C1829
C1830
C1831
C1832
C1833
C1834
C1835
C1836
C1837
C1838
C1839
C1840
C1841
C1842
C1843
C1844
C1845
C1846
C1847
C1848
C1849
C1850
C1851
C1852
C1853
C1854
C1855
C1856
C1857
C1858
C1859
C1860
C1861
C1862
C1863
C1864
C1865
C1866
C1867
C1868
C1869
C1870
C1871
C1872
C1873
C1874
C1875
C1876
C1877
C1878
C1879
C1880
C1881
C1882
C1883
C1884
C1885
C1886
C1887
C1888
C1889
C1890
C1891
C1892
C1893
C1894
C1895
C1896
C1897
C1898
C1899
C1900
C1901
C1902
C1903
C1904
C1905
C1906
C1907
C1908
C1909
C1910
C1911
C1912
C1913
C1914
C1915
C1916
C1917
C1918
C1919
C1920
C1921
C1922
C1923
C1924
C1925
C1926
C1927
C1928
C1929
C1930
C1931
C1932
C1933
C1934
C1935
C1936
C1937
C1938
C1939
C1940
C1941
C1942
C1943
C1944
C1945
C1946
C1947
C1948
C1949
C1950
C1951
C1952
C1953
C1954
C1955
C1956
C1957
C1958
C1959
C1960
C1961
C1962
C1963
C1964
C1965
C1966
C1967
C1968
C1969
C1970
C1971
C1972
C1973
C1974
C1975
C1976
C1977
C1978
C1979
C1980
C1981
C1982
C1983
C1984
C1985
C1986
C1987
C1988
C1989
C1990
C1991
C1992
C1993
C1994
C1995
C1996
C1997
C1998
C1999
C2000



F101A F101B

WLC114-2

D105 H RADIO
D106 H HEAD
D107 H PHONE
D108 H HEAD
D109 H PHONE
D110 H TA

BC1
SL76

SL74

F101C

D111
D112
D113
D114
D115
D116
D117
D118
D119

ONE
TWO
THREE
FOUR
FIVE
SIX
SEVEN
EIGHT
NINE
ZERO
STAR
POUND
STOP

SL77

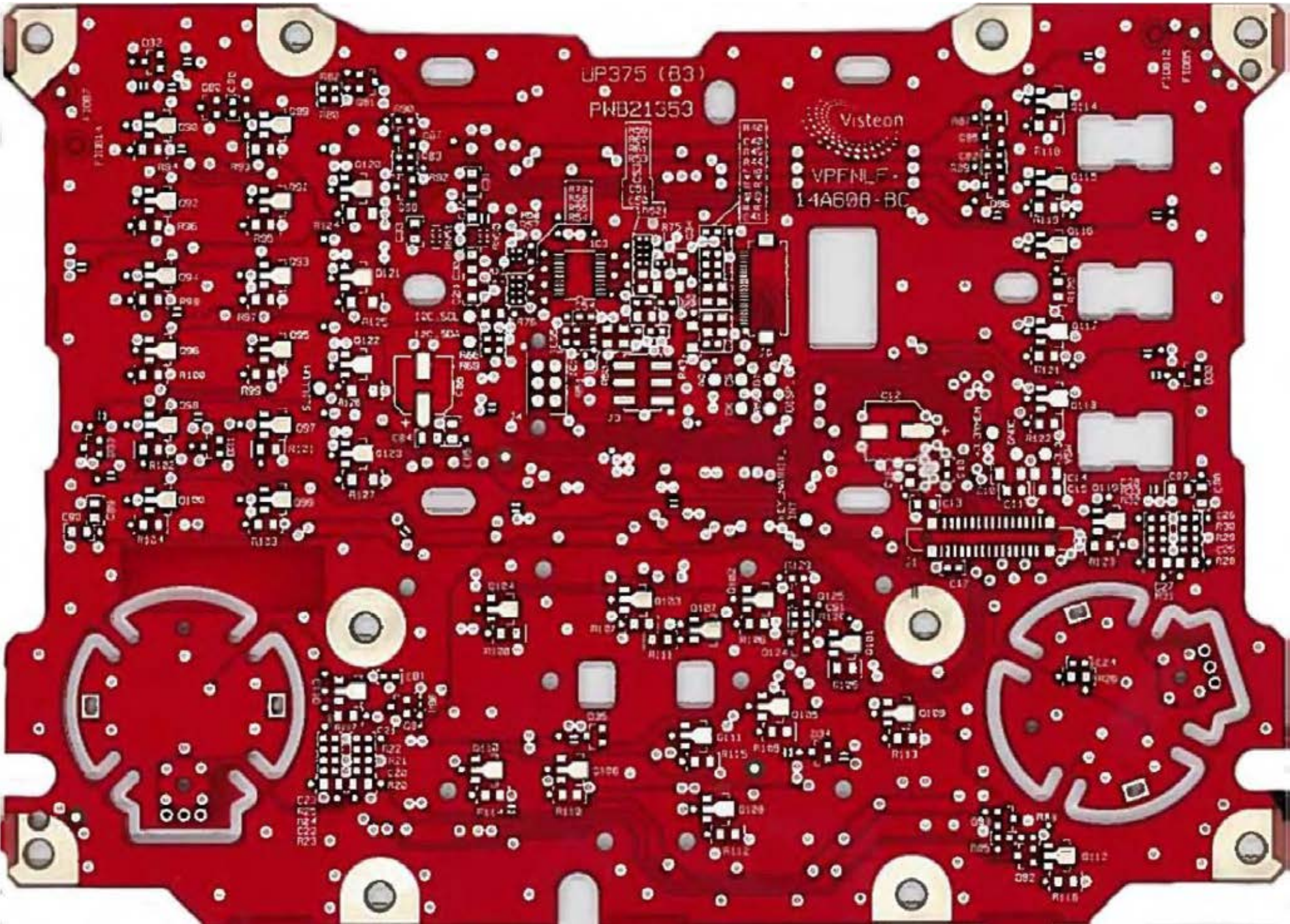
SL75

VOLUME

TUNE

VPFNLF-14A60B-BC
PWB21353

SL78
CL1
SL79
SL80
SL81
SL82
SL83
SL84
SL85
SL86
SL87
SL88
SL89
SL90
SL91
SL92
SL93
SL94
SL95
SL96
SL97
SL98
SL99
SL00



UP375 (B3)

PWB21353

Visteon
VPFNL-
14A600-BC

F10012
F10015

302475
010415

R226
R228
R229
R230
R231
R232

