

Keys & Handsets

KEYS AND HANDSETS

You have been supplied with two remote handsets with integral keys which operate all of the vehicle's locks.

The keys supplied with your vehicle are programmed to your security system - the engine cannot be started without a key programmed to your vehicle. If a key is lost or broken, a replacement can be obtained only from a Land Rover Dealer.

WARNING

Keep the spare handset key in a safe place - NOT IN THE VEHICLE!

The other two keys that you have received are for locking the main glovebox.

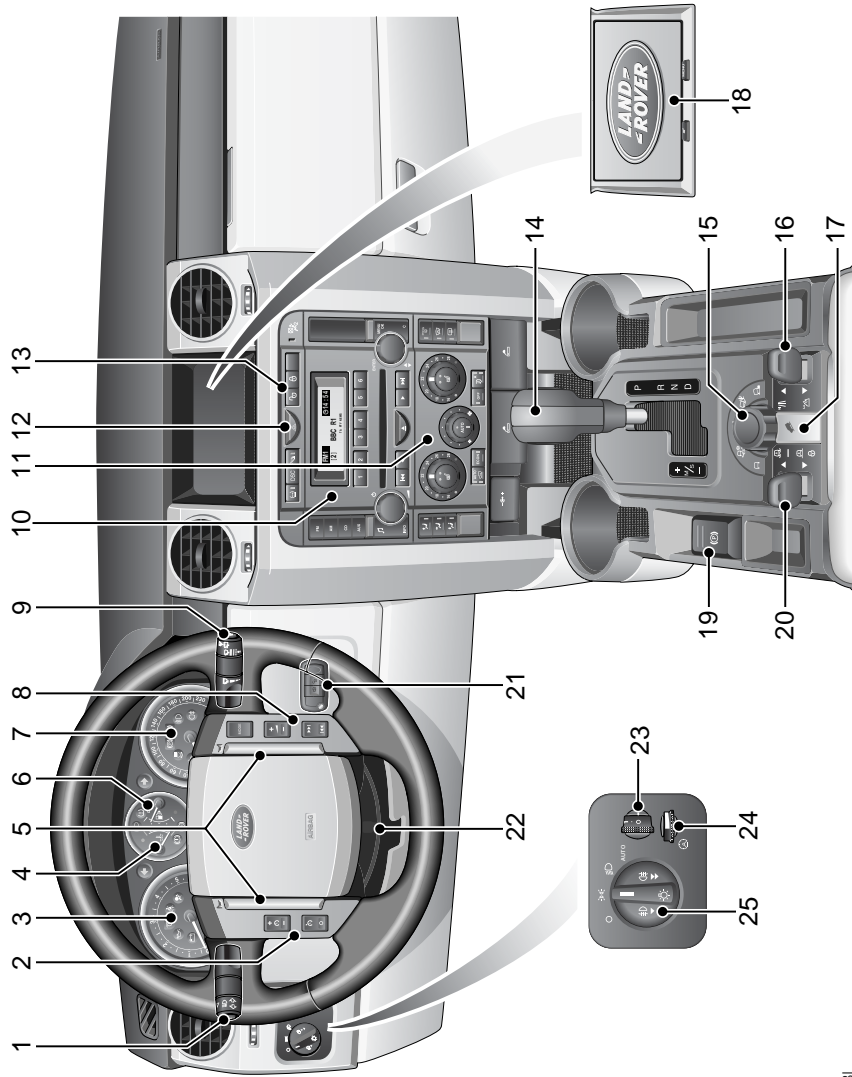


H5377G

1. Key release button
2. Lock button
3. Unlock button
4. Customer configuration - 'Land Rover' - button

Fascia Controls

FASCIA CONTROLS



H5373L

Fascia Controls

FASCIA CONTROLS KEY

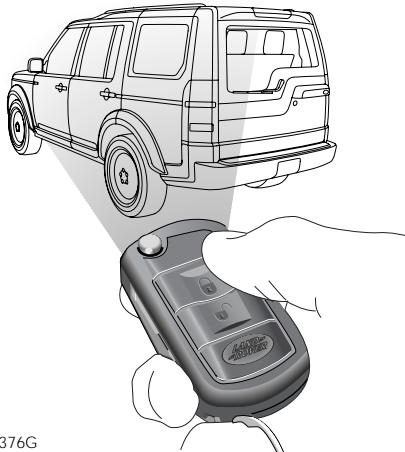
1. Headlamps and direction indicator controls
2. Cruise control switches
3. Tachometer
4. Temperature gauge
5. Horn buttons
6. Fuel gauge
7. Speedometer
8. Audio remote controls
9. Wash/wipe controls
10. Audio display/controls
11. Heater/air conditioning controls
12. Hazard warning lamp switch
13. Door lock/unlock switch
14. Gear selector
15. Terrain Response™ control switch*
16. Transfer gearbox switch
17. Hill Descent Control switch
18. Display screen
19. Electric parkbrake switch
20. Air suspension switch
21. Starter switch
22. Steering column adjustment
23. Manual headlamp levelling
24. Dimmer control
25. Lamps master switch

Note:

The precise specification and location of the controls may vary according to territorial requirements and from vehicle to vehicle.

Locks & Alarms

ALARM SYSTEM



H5376G

Your vehicle is fitted with a sophisticated electronic anti-theft alarm and engine immobilisation system. There are also a number of additional security features, some of which are selectable options and some are standard features of the vehicle.

In order to ensure maximum security and operating convenience, you are strongly advised to gain a full understanding of the features and alternatives available, by thoroughly reading this section of the handbook.

IMPORTANT INFORMATION

FOR MAXIMUM SECURITY ALWAYS SUPERLOCK THE VEHICLE. If passengers or animals are to be left in the vehicle, windows and/or sunroof are left open, or the vehicle is on a moving platform, e.g. a ferry, lock the vehicle by pressing the lock button twice within two seconds. This disables the superlocking, tilt sensing* and interior space protection*.

LOCKING/UNLOCKING

While it is not necessary to point the handset at the vehicle, the handset must be within range of the vehicle when a button is pressed.

The operating range may vary depending upon handset battery condition and may sometimes be limited by physical and geographical factors beyond your control.

Note: If the key fails to work even when close to the vehicle, it could be that the key is not synchronised with the system, see **Emergency locking/unlocking, 44**. Putting the key in the starter switch and running the engine for six minutes will restore full operation.

IMPORTANT INFORMATION

If a key is in the starter switch, the vehicle will not respond to remote handset commands.

Locks & Alarms



H5377G

Locking with the remote handset

Remove the key from the starter switch and shut all doors, the bonnet and the tailgate.

The four buttons on the handset are used as follows:

1. Key release button.

2. Lock button: Press to superlock all doors and to activate the perimeter alarm and interior space protection* and activate the tilt sensor* (see **Superlocking, 41, Tilt Sensor*, 42**).

Press twice within three seconds to lock all doors and activate the perimeter alarm, but NOT activate interior space protection* or tilt sensor*.

The direction indicator lamps will flash three times.

3. Unlock button: Press once to disarm the alarm and unlock the driver's door and to activate the 'Lazy seats'* feature, (see **DRIVER'S SEAT MEMORY FACILITY*, 56**). Press again to unlock the remaining doors (see **Single-point entry, 42**).

Press once to activate the memory seat and mirrors settings (see **DRIVER'S SEAT MEMORY FACILITY*, 56**).

In either case, the interior lamps illuminate and the direction indicators flash once.

The hazard warning lamps will quickly flash eight times when the vehicle is disarmed if the alarm has sounded since the vehicle was last armed.

4. Customer Configuration - 'Land Rover' button: This button can be configured to operate panic alarm, headlamp courtesy delay or suspension control (see **'LAND ROVER' BUTTON, 39**).

Partial arming

If the driver's door is not fully closed when the handset lock button is pressed, the doors will remain unlocked and the alarm will remain disarmed. A brief sound from the vehicle horn will confirm that the door is not fully closed.

Locks & Alarms

If a passenger door or other aperture is not fully closed when the handset lock button is pressed, the 'partial arming' attributes of the security system will enable as much of the system to be armed as possible (all fully closed door, bonnet or tailgate apertures will be protected, but an open one will not).

A brief sound from the vehicle's horns will confirm that an aperture is not fully closed.

As soon as the open aperture is closed, the system will automatically arm, signalled by three flashes of the hazard warning lamps, with interior space protection* activating 30 seconds after all apertures are closed.

Note: *The vehicle will not superlock if an aperture (other than the bonnet) is open.*

Locks & Alarms

'LAND ROVER' BUTTON

Customer programmable button

The fourth button - marked with the Land Rover logo - on the remote handset can be programmed to give remote operation of one of the following functions:

- panic alarm
- headlamp courtesy delay
- air suspension control

Note: Programming and subsequent use of the 'Land Rover' button will not occur if the key is in the starter switch.

WARNING

Be aware that the previously programmed feature will be activated when the button is initially pressed to start the programming sequence.

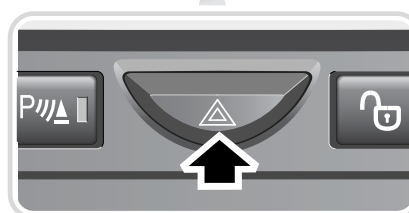
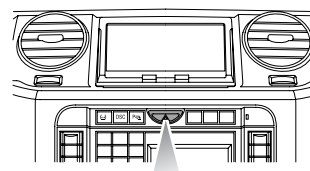
Handset Programming

Panic Alarm

This facility is programmed by pressing the 'Land Rover' button and, keeping it pressed, pressing the hazard warning lamps button on the instrument panel. A chime from the instrument panel buzzer will confirm successful programming of the remote's button.

A short press of the button will now cause the vehicle's alarm to be sounded and the hazard warning lamps to flash.

The alarm is turned off by inserting the key in the starter, or pressing the lock or unlock buttons on the remote handset.



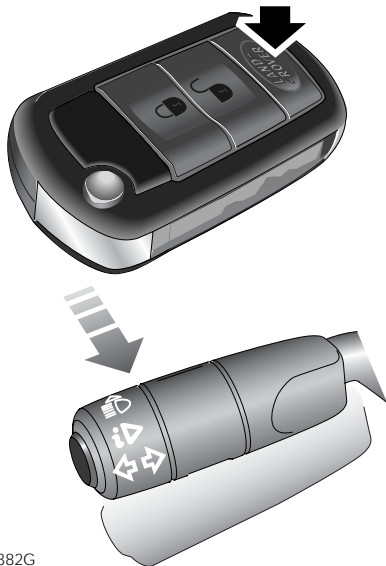
H5381G

Locks & Alarms

Headlamp Courtesy Delay

This facility is programmed by pressing the 'Land Rover' button and, keeping it pressed, flashing the headlamps. A chime from the instrument panel buzzer will confirm successful programming of the remote's button.

A short press of the button will now cause the vehicle's headlamps to illuminate for the length of time specified in Settings. A second press of the button after three seconds will de-activate the lamps. A further press, within three seconds, will activate the reverse lamps. A further press will de-activate the headlamps and reverse lamps.



H5382G

Air Suspension Control

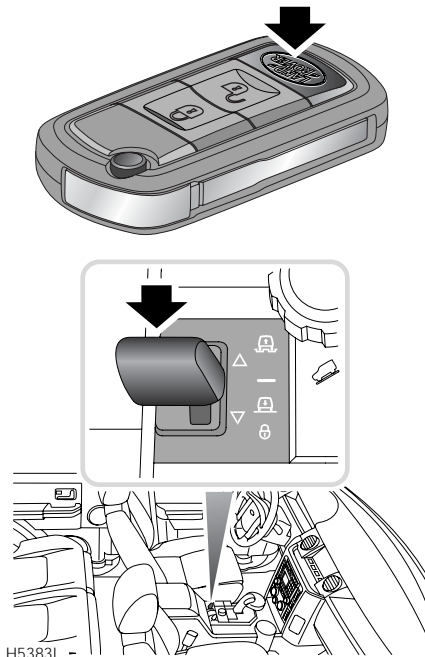
This facility is programmed by pressing the 'Land Rover' button and, keeping it pressed, pressing the suspension control switch. A chime from the instrument panel buzzer will now confirm successful programming of the remote's button.

Programming of this function must be done within one minute of switching off the engine.

Pressing and holding the button while pressing the lock button on the remote will now cause the air suspension to rise, provided that the hazard warning lamps have been switched on.

Pressing and holding the button while pressing the unlock button on the remote will cause the air suspension to lower, provided that the hazard warning lamps have been switched on.

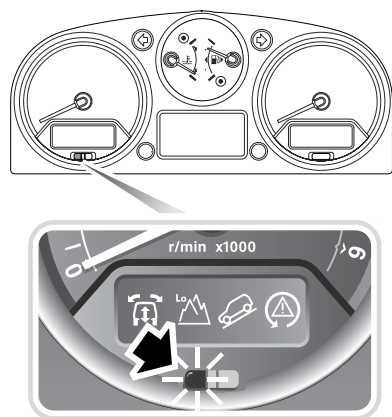
If any button is released during the raising or lowering of the suspension, all movement of the suspension will stop. It will restart once the buttons are pressed again.



H5383L -

Locks & Alarms

Anti-theft alarm indicator



H5378G

The indicator provides information about the status of the alarm and immobiliser systems, as follows:

When the alarm is armed with interior space protection*:

The indicator will triple flash for 10 seconds then continue to single flash until the vehicle is disarmed and immobilised.

When the alarm is armed without interior space protection:

The indicator will double flash for 10 seconds, then continue to single flash until the vehicle is disarmed and immobilised.

When the alarm is disarmed but the vehicle is immobilised (key out of starter switch):

The indicator will single flash until the alarm is armed or the vehicle is mobilised.

When the alarm is disarmed and the vehicle is mobilised (key in starter switch):

The indicator gives a one-second flash on remobilisation.

If the alarm sounds

If the alarm is triggered, the alarm will sound and the hazard warning lamps will flash for 30 seconds, before resetting to the same protection status that existed prior to the alarm being triggered.

To silence the alarm, press the lock or unlock button on the remote handset or insert the key into the starter switch. Pressing the lock button will keep the alarm armed.

When the vehicle is disarmed, the hazard warning lamps will quickly flash eight times if the alarm has sounded since the vehicle was last armed.

Driver's door anti-slam

To prevent the accidental locking of the vehicle with the keys inside, the driver's door is fitted with an anti-slam lock.

If the door-locking button on the driver's door is depressed while the door is open, the door will unlock when it is next closed.

Superlocking

WARNING

For safety, NEVER use Superlocking if passengers are to remain inside the vehicle - in an emergency they would not be able to escape. Also, any movement from within the vehicle would activate the interior space protection alarm*.

Superlocking is activated by one press of the lock button on the handset or two turns of the key.

Superlocking immobilises the interior door handles, thereby preventing an intruder from gaining entry by smashing a window and reaching inside the vehicle to operate the door handles.

Locks & Alarms

Perimetric alarm

This feature is activated automatically whenever the vehicle is locked using either the handset or key and protects the doors, bonnet and tailgate.

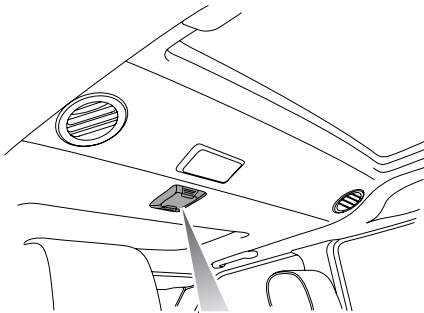
If any of these apertures are opened while the feature is activated, the alarm will be triggered.

Interior space protection*

Interior space protection is activated whenever the vehicle is superlocked.

WARNING

Never activate interior space protection if windows or sunroof are to be left open, or if passengers or animals are to be left inside the vehicle - any movement will activate the alarm.



H5380G

Interior space protection is designed to protect the interior of the vehicle from intrusion (entry by a thief through a smashed window, for example). Four roof-mounted sensors monitor the interior space and activate the alarm if air movement is detected in the passenger compartment.

Note: Interior space protection cannot be activated if a door is open.

Disabling interior space protection:

If there is a requirement to disable interior space protection (if a window or sunroof is to be left open, for example), press the lock button on the remote handset twice within three seconds.

Tilt Sensor*

Your vehicle is fitted with a tilt sensor which activates the alarm if the vehicle is tilted fore and aft, or side to side, after it has been superlocked.

The alarm will sound if theft is attempted by hoisting onto another vehicle or if a side is lifted to attempt wheel removal.

If you wish to have the doors locked but the tilt sensor disabled (e.g. when aboard a ferry or having the vehicle transported on a recovery truck) press the lock button twice within three seconds.

Single-point entry

This is a personal security feature, which enables only the driver's door to be unlocked, leaving the other doors in a locked state.

Single-point entry can be disabled on individual handset keys by pressing and holding the lock and unlock buttons together for three seconds.

Repeating the procedure will re-enable the feature.

Locks & Alarms

Each time single-point entry is turned on or off, the vehicle will lock then unlock into the selected mode (all doors unlocked or just driver's door unlocked).

ENGINE IMMOBILISATION

Engine immobilisation is an important aspect of the security system. It is designed to safeguard the vehicle from theft, should the driver forget to lock the doors. The system prevents the engine from being started unless the GENUINE handset key or emergency key is inserted into the starter switch.

Engine immobilisation is automatic five seconds after the key is removed from the starter switch.

Note: *The engine will be re-mobilised automatically whenever the genuine handset key is inserted into the starter switch. When this happens, the anti-theft alarm indicator will illuminate for onesecodn and then extinguish.*

Remote handset battery

WARNING

The handset contains delicate electronic circuits and must be protected from impact and water damage, high temperatures and humidity, direct sunlight and the effects of solvents, waxes and abrasive cleaners.

The battery is rechargable. The fact that the battery needs recharging will be apparent from the following:

- 'KEY BATTERY LOW' will be displayed in the main message centre.
- A gradual deterioration in range and performance will be noticed.

Battery recharge

Insert the key into the starter switch and start the engine. This will start to recharge the handset battery.

Battery disposal



Used batteries should be recycled. However, batteries are hazardous - you should seek advice about disposal from a Land Rover Dealer/Authorised Repairer or your local authority.

Locks & Alarms

Emergency locking/unlocking



H5379G

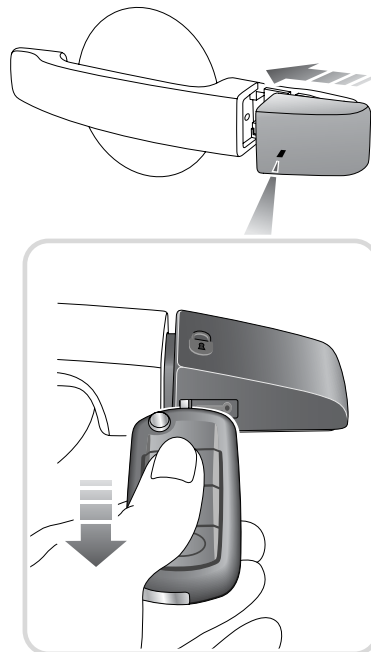
Under a removable cap on the left-hand front door outer handle, there is an emergency-use door lock. In the very unlikely event that the remote handset has failed, this lock can be used.

Removing the cap

1. Insert the key fully into the slot under the handle cap.
2. The cap can now be removed at the forward edge and unhooked from the rear edge.

3. Remove the key from the slot and use it in the emergency lock.

Refitting the cap



H5775G

1. Insert the key fully into the slot in the handle cap.
2. Hook the cap onto the lock barrel at the rear edge.
3. Push the front edge of the cap onto the panel.
4. Remove the key from the slot.

Locks & Alarms

Locking:

Turn the key clockwise. The vehicle will lock and arm the perimetric alarm (without tilt sensor* or interior space protection*).

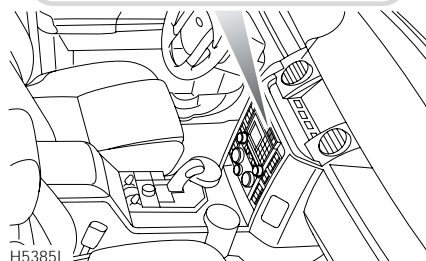
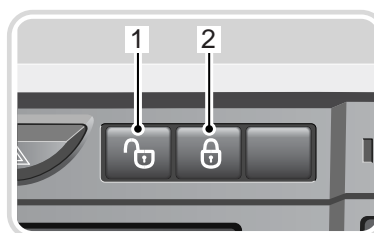
Turning the key again within three seconds will superlock the vehicle and arm the tilt sensor* or interior space protection*.

Unlocking:

Turn the key in the driver's door lock anticlockwise. A tone will be heard from the instrument panel and the driver's door will unlock. Turning the key again will unlock the passenger doors.

If the key is not inserted into the starter switch within 12 seconds, the vehicle alarm will be triggered.

Master lock and unlock switches



1. Pressing the master unlock button will unlock all of the doors.
2. Pressing the master lock button will lock all of the doors.

Note: If the locks have already been superlocked using the remote handset or the key, the switch will not release the locks.

Tailgate emergency unlock

Simultaneously pressing both the master lock and unlock switches for three seconds will cause the upper tailgate to release. This is an emergency release function in case the tailgate exterior release switch becomes inoperative.

Speed-related locking

This security feature locks all the doors automatically when the vehicle speed exceeds 8 km/h.

Locks & Alarms

Note: The speed at which speed-related locking occurs is not selectable by the driver, and operation of the door locks by any other means (interior locking switch on the instrument panel, for example) will unlock the doors.



Speed-related locking can be selected or deselected by a Land Rover Dealer/Authorised Repairer or by the driver.

See **SELECTING SETTINGS OPTION, 95.**

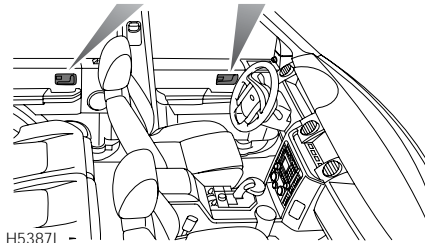
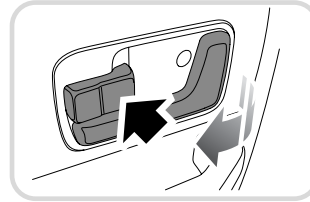
Automatic relock

If the vehicle is unlocked using the remote handset and one minute elapses before a door, the tailgate or the bonnet is opened, or the key is inserted into the starter switch, the vehicle will relock and the alarm will re-arm.

Emergency unlocking

If the vehicle is involved in a collision forceful enough to cause a restraints device to deploy, provided that the doors have not been locked using the door key or remote handset, all door locks will become unlocked and the hazard warning lamps will start to flash. If the vehicle is stationary, the interior lamps will also illuminate.

Interior door handles and door locking buttons



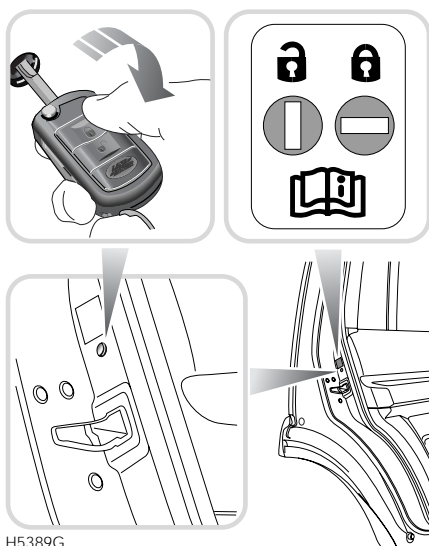
From inside the vehicle, each door can be individually locked by depressing the appropriate door button (arrowed). Doors can be unlocked by pulling the door handle (inboard). A second pull opens the door.

When the master lock or unlock button is activated, all door locking buttons will move automatically.

These locking buttons will only operate if the doors have not been secured using the remote handset or door key.

Locks & Alarms

CHILD SAFETY LOCKS



H5389G

Child safety locks are fitted to the rear doors.

Open a rear door and insert the ignition key into the child safety keyhole. Turn the key one quarter of a turn so that the top of the key moves towards the vehicle. Repeat for the other door.

With the child safety locks engaged, the rear doors cannot be opened from inside the vehicle. This prevents a door from being opened accidentally with the vehicle in motion.

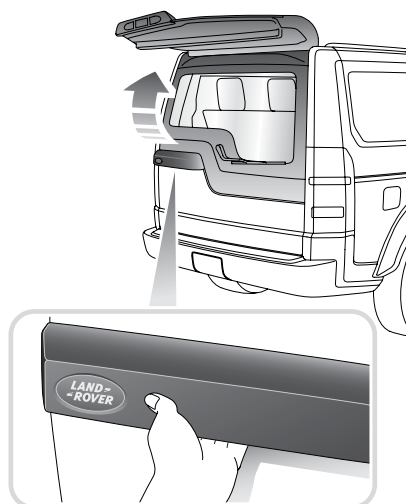
Inserting the key and turning it in the opposite direction disengages the lock.

WARNING

NEVER leave children unsupervised in the vehicle.

TAILGATE

Opening the upper tailgate



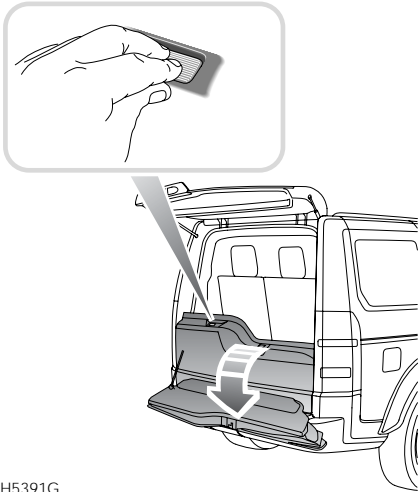
H5390G

With all doors unlocked, press the touch pad on the underside of the exterior handle and pull to open.

If the tailgate fails to open, an emergency procedure is available, see **Tailgate emergency unlock, 45**.

Locks & Alarms

Opening the lower tailgate



H5391G

With the upper tailgate open, press the touch pad on the lower tailgate waist moulding.