

Figure 5.1. Transmitter on the test table (Open-Site).
(Top) Orientation of the transmitter for maximum emission.
(Bottom) Close-up.

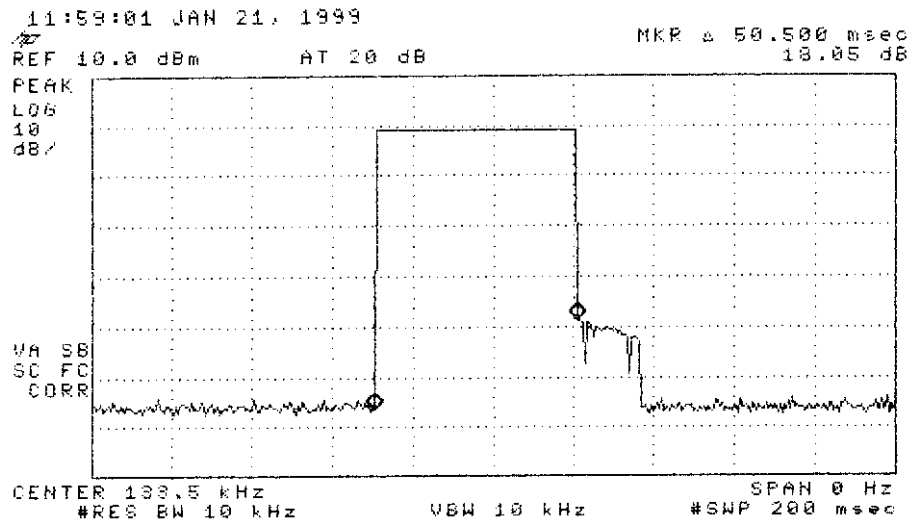


Figure 6.1. Transmissions modulation characteristics. Complete transmission is a single pulse.

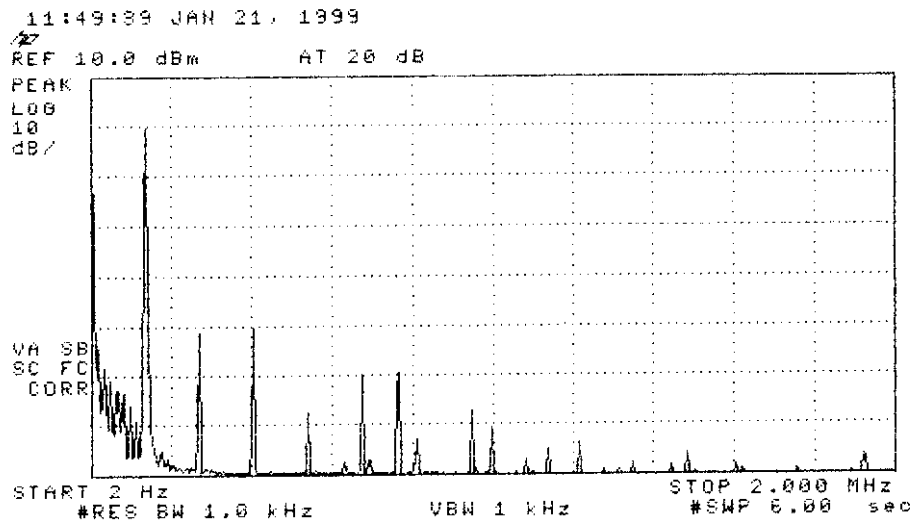


Figure 6.2. Emission spectrum of the DUT (CW emission). The amplitudes are only indicative (not calibrated).

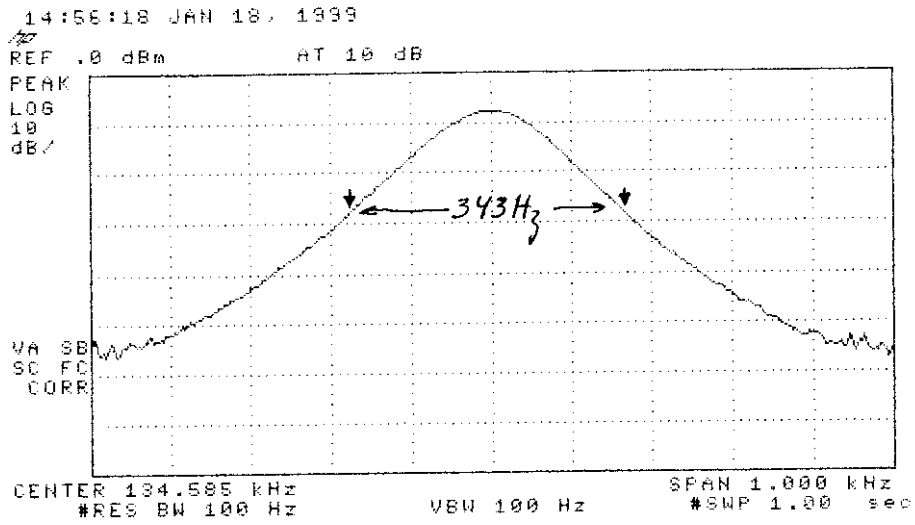


Figure 6.3. Measured bandwidth of the DUT (pulsed emission).

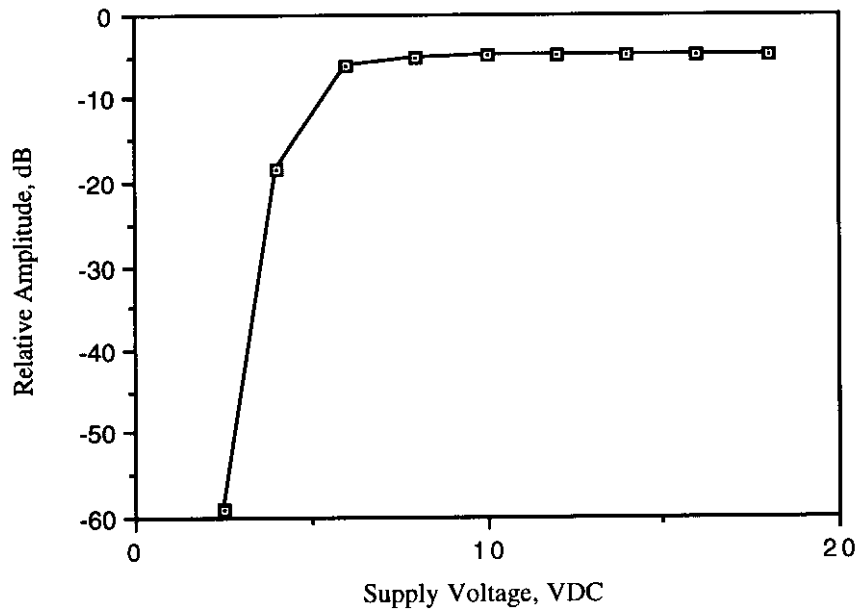


Figure 6.4. Relative emission at 134.6 MHz vs. supply voltage (CW emission).

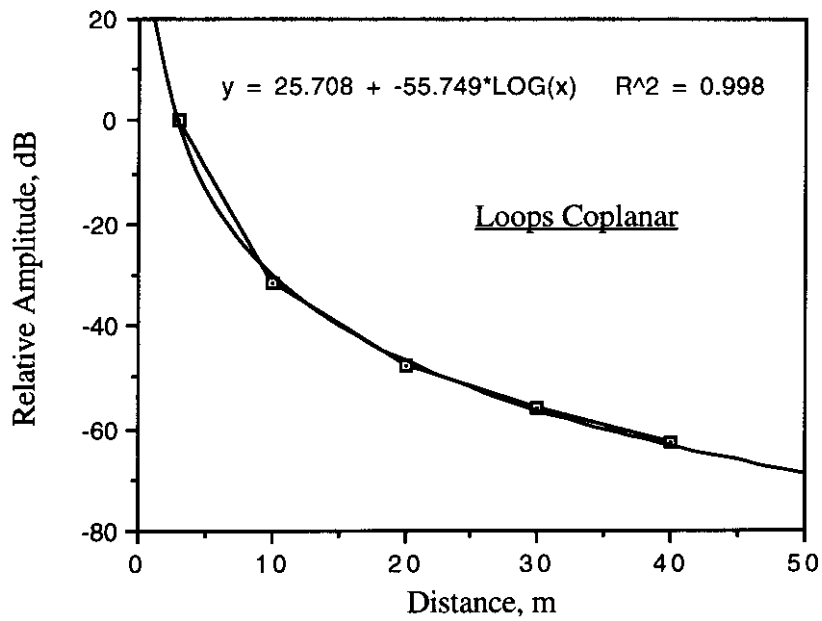


Figure 6.5. Field attenuation for case of coplanar loops.

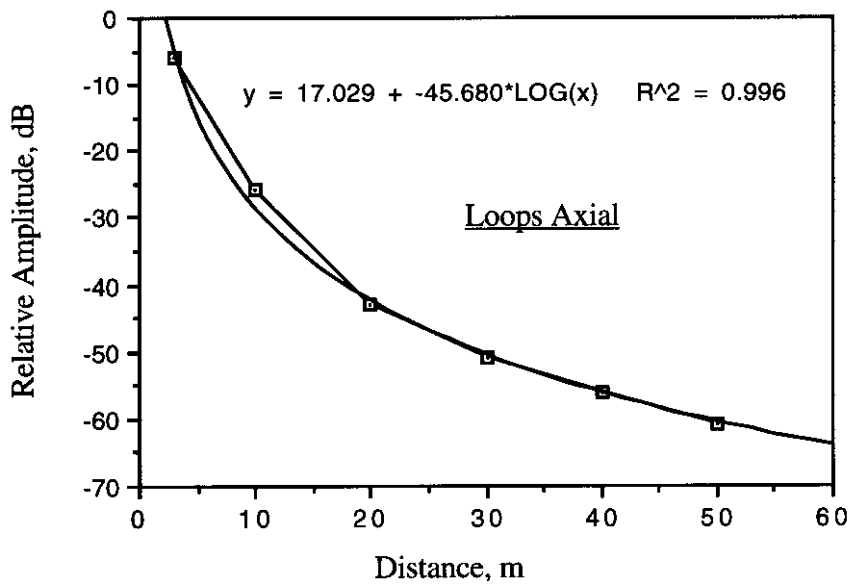


Figure 6.6. Field attenuation for case of axial loops.