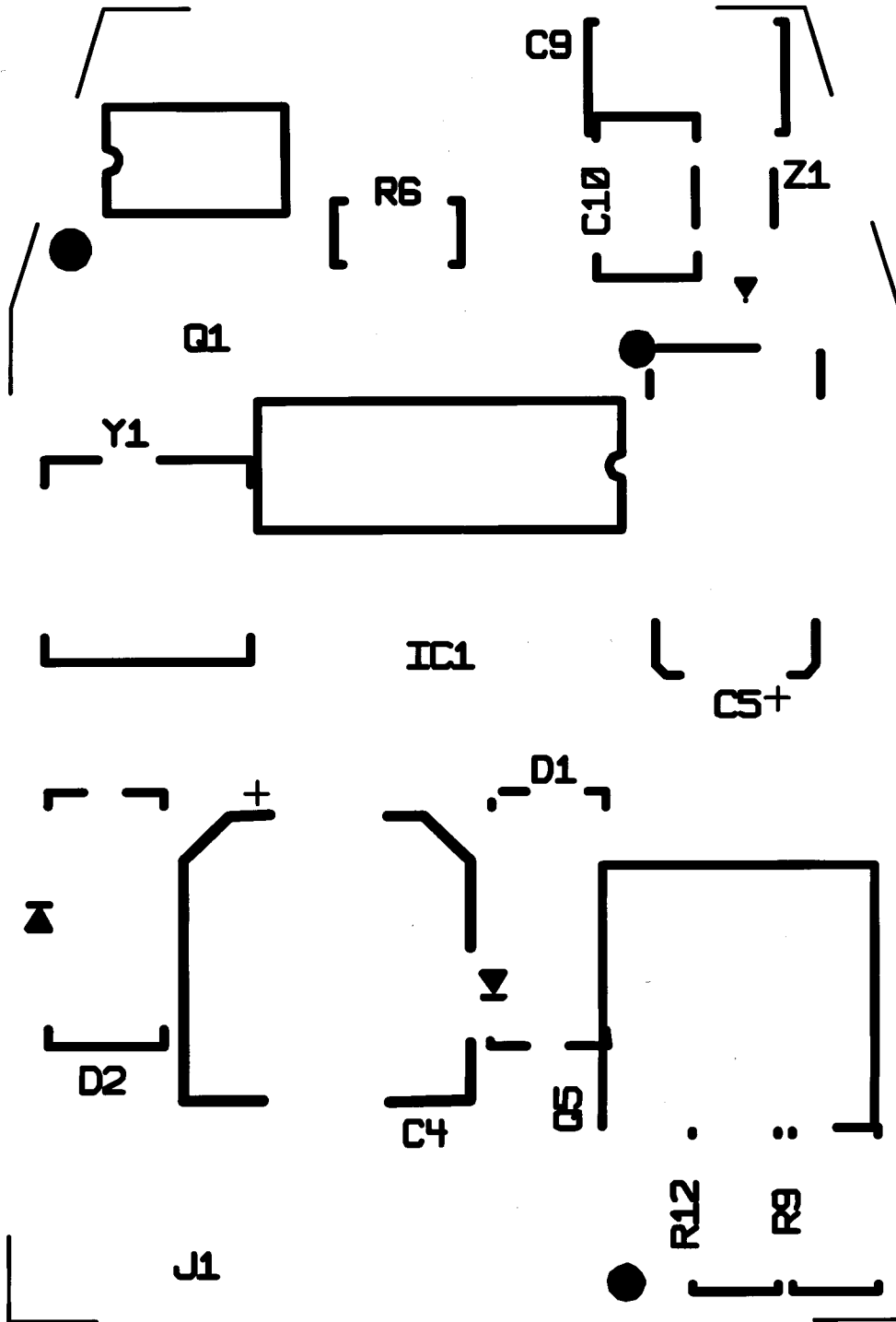


**1U3F-15607-A Bill of Material**

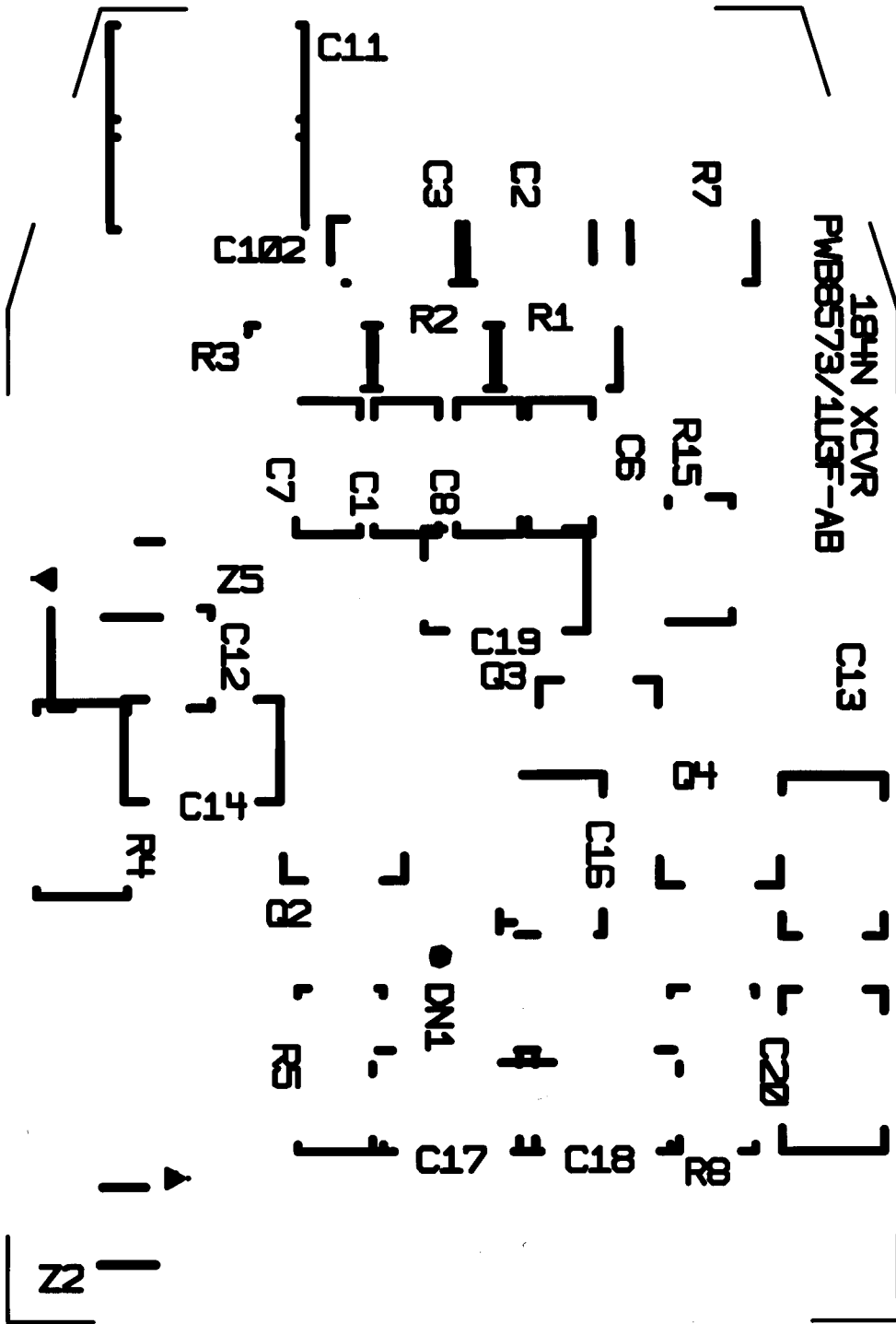
Description	Symbol	Quantity
INTRFC IC, TMS57781NS-MA, SOIC, 16	IC1	1
RES,TF,10KOhms,5%,63mW,0603	R6	1
RES,TF,1MOhms,5%,63mW,0603	R1	1
RES,TF,1MOhms,5%,63mW,0603	R2	1
RES,TF,1MOhms,5%,63mW,0603	R3	1
RES,TF,220Ohms,5%,63mW,0603	R7	1
RES,TF,33KOhms,5%,63mW,0603	R15	1
RES,TF,39Ohms,5%,100mW,0805	R5	1
RES,TF,39Ohms,5%,100mW,0805	R8	1
RES,TF,510Ohms,10%,100mW,0805	R9	1
RES,TF,510Ohms,10%,100mW,0805	R12	1
RES,TF,820Ohms,5%,125mW,1206	R4	1
CAP,CERM,1nF,20%,100V,0805	C16	1
CAP,CERM,1nF,20%,100V,0805	C17	1
CAP,CERM,1nF,20%,100V,0805	C18	1
CAP,CERM,10nF,20%,100V,0805	C12	1
CAP,CERM,10nF,20%,100V,0805	C19	1
CAP,CERM,100nF,10%,50V,0805	C14	1
CAP,CERM,22nF,10%,100V,0805	C13	1
CAP,CERM,22nF,10%,100V,0805	C20	1
CAP,CERM,3.9nF,2%,50V,1206	C9	1
CAP,CERM,3.9nF,2%,50V,1206	C11	1
CAP,CERM,3.9nF,2%,50V,1206	C102	1
CAP,CERM,68pF,5%,50V,0603	C1	1
CAP,CERM,68pF,5%,50V,0603	C2	1
CAP,CERM,68pF,5%,50V,0603	C3	1
CAP,CERM,68pF,5%,50V,0603	C6	1
CAP,CERM,68pF,5%,50V,0603	C7	1
CAP,CERM,68pF,5%,50V,0603	C8	1
CAP,CERM,680pF,5%,100V,0805	C10	1
CAP,ALUM,22uF,20%,50V,SMD	C4	1
CAP,TANT,47uF,10%,20V,TA-X	C5	1
DIO,VSUP,27V,5%,SC-59,MMQA27VT1	DN1	1
DIO,RECT,400V,1A,GF-1,GF1-G	D1	1
DIO,RECT,400V,1A,GF-1,GF1-G	D2	1
DIO,ZENR,5.6V,2%,200mW,SOD323,RD5.	Z5	1
DIO,ZENR,5.6V,5%,200mW,SOD323,RD5.	Z1	1
DIO,ZENR,6.8V,5%,200mW,SOD323,RD6.	Z2	1
TRANS,PBIP,NPN,3A,1W,D-PAK,2SD2318	Q5	1
TRANS,BRES,NPN,100mA,200mW,SOT-23,	Q2	1
TRANS,BRES,NPN,100mA,200mW,SOT-23,	Q3	1
TRANS,BRES,NPN,100mA,200mW,SOT-23,	Q4	1
TRANS,PMOS,3A,2W,SO-8,MMDF2C03E	Q1	1
RESON,RCERM,17.12MHz,CSTCS_MX	Y1	1
IMMOBIL. COVER-PWB		1
PLATE-IDENT.LABEL 167W		1
PLATE-RTA LABEL 167W		1
COIL CONNECTOR HSG.		1

Top Overlay



File Name: 8573.PCB  
1U3F-14A608-A  
Date: 18.01.2000

Bottom Overlay



Date: 18.01.2000  
 File Name: 8253.PCB  
 1U3F-14A08-A