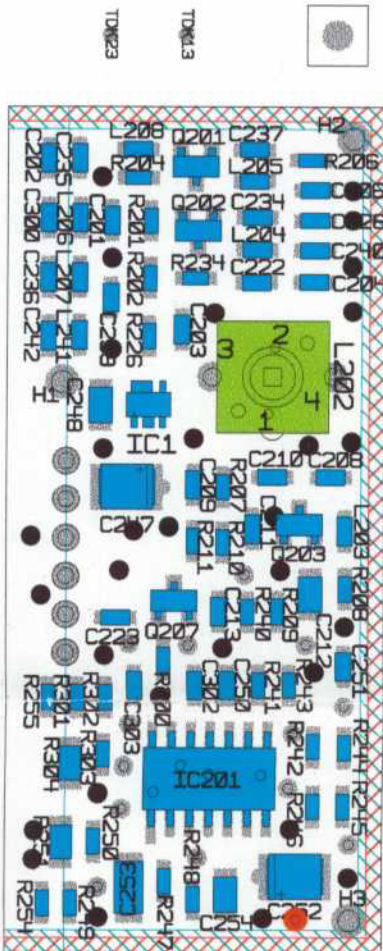


A1

B2



TOPK2.3

TOPK1.3



BOM : 1C3F-14B205-EA Owner : TDOBSON1

Line	Part Number	Rev	Stat	SAR	Description	Symbol	Circuit	Level	Qty
BOM1	1C3F-14B205-EA	3	W	N	2001 PNI131/UW137 ESOF + RKE GEM	AHOUS	AHOUS	1	1
0100	F75F-14B128-CC	0	N	N	HOUSING-PRINTED WIRING BOARD	AHOUS	AHOUS	1	1
0101	XW4F-18N173-AA	0	N	N	MODULE LABEL (BLANK STOCK)	DOC	DOC	1	1
0102	CH1C3F-14B370-AA	0	N	N	CHART-MODULE PROGRAM ELECTRONIC	DOC	DOC	1	REF
0103	ES-1C3F-14B205-AA	0	N	N	SPEC-MODULE-MULT FUNC CONT	DOC	DOC	1	REF
0104	MS-1C3F-3458-AA	0	N	N	SKETCH-WIRING DIAGRAM (ASY SHEET #	DOC	DOC	1	REF
0105	MS-1C3F-3458-AA	0	N	N	SKETCH-WIRING DIAGRAM (ASY SHEET #	DOC	DOC	1	REF
0106	MS-1C3F-3458-AA	0	N	N	SKETCH-WIRING DIAGRAM (ASY SHEET #	DOC	DOC	1	REF
0107	MS-1C3F-3458-BA	0	N	N	SKETCH-WIRING DIAGRAM (BATTERY)	DOC	DOC	1	REF
0108	MS-1C3F-3458-CA	0	N	N	SKETCH-WIRING DIAGRAM (POWER SUPPL	DOC	DOC	1	REF
0109	MS-1C3F-3458-DA	0	N	N	SKETCH-WIRING DIAGRAM (PULL UP_SUP	DOC	DOC	1	REF
0110	MS-1C3F-3458-EA	0	N	N	SKETCH-WIRING DIAGRAM (PULL UP_SUP	DOC	DOC	1	REF
0111	MS-1C3F-3458-FA	0	N	N	SKETCH-WIRING DIAGRAM (5V SW)	DOC	DOC	1	REF
0112	MS-1C3F-3458-GA	0	N	N	SKETCH-WIRING DIAGRAM (INPUT_1)	DOC	DOC	1	REF
0113	MS-1C3F-3458-HA	0	N	N	SKETCH-WIRING DIAGRAM (INPUT_2)	DOC	DOC	1	REF
0114	MS-1C3F-3458-JA	0	N	N	SKETCH-WIRING DIAGRAM (INPUT_3)	DOC	DOC	1	REF
0115	MS-1C3F-3458-KA	0	N	N	SKETCH-WIRING DIAGRAM (INPUT_4)	DOC	DOC	1	REF
0116	MS-1C3F-3458-LA	0	N	N	SKETCH-WIRING DIAGRAM (INPUT_5)	DOC	DOC	1	REF
0117	MS-1C3F-3458-MA	0	N	N	SKETCH-WIRING DIAGRAM (INPUT_6)	DOC	DOC	1	REF
0118	MS-1C3F-3458-NA	0	N	N	SKETCH-WIRING DIAGRAM (INPUT_7)	DOC	DOC	1	REF
0119	MS-1C3F-3458-PA	0	N	N	SKETCH-WIRING DIAGRAM (INPUT_8)	DOC	DOC	1	REF
0120	MS-1C3F-3458-RA	0	N	N	SKETCH-WIRING DIAGRAM (INPUT_9)	DOC	DOC	1	REF
0121	MS-1C3F-3458-SA	0	N	N	SKETCH-WIRING DIAGRAM (INPUT_10)	DOC	DOC	1	REF
0122	MS-1C3F-3458-TA	0	N	N	SKETCH-WIRING DIAGRAM (INPUT_11)	DOC	DOC	1	REF
0123	MS-1C3F-3458-UA	0	N	N	SKETCH-WIRING DIAGRAM (INPUT_20)	DOC	DOC	1	REF
0124	MS-1C3F-3458-VA	0	N	N	SKETCH-WIRING DIAGRAM (INPUT_21)	DOC	DOC	1	REF
0125	MS-1C3F-3458-XA	0	N	N	SKETCH-WIRING DIAGRAM (INPUT_22)	DOC	DOC	1	REF
0126	MS-1C3F-3458-YA	0	N	N	SKETCH-WIRING DIAGRAM (INPUT_23)	DOC	DOC	1	REF
0127	MS-1C3F-3458-ZA	0	N	N	SKETCH-WIRING DIAGRAM (INPUT_24)	DOC	DOC	1	REF
0128	MS-1C3F-3458-AAA	0	N	N	SKETCH-WIRING DIAGRAM (INPUT_25)	DOC	DOC	1	REF
0129	MS-1C3F-3458-ABA	0	N	N	SKETCH-WIRING DIAGRAM (INPUT_26)	DOC	DOC	1	REF
0130	MS-1C3F-3458-ACA	0	N	N	SKETCH-WIRING DIAGRAM (START_CLUTC	DOC	DOC	1	REF
0131	MS-1C3F-3458-ADA	0	N	N	SKETCH-WIRING DIAGRAM (TMS37ICIR)	DOC	DOC	1	REF
0132	MS-1C3F-3458-ABA	0	N	N	SKETCH-WIRING DIAGRAM (OSS DRIVER1	DOC	DOC	1	REF
0133	MS-1C3F-3458-AFA	0	N	N	SKETCH-WIRING DIAGRAM (OSS DRIVER2	DOC	DOC	1	REF
0134	MS-1C3F-3458-AGA	0	N	N	SKETCH-WIRING DIAGRAM (OSS DRIVER3	DOC	DOC	1	REF
0135	MS-1C3F-3458-AHA	0	N	N	SKETCH-WIRING DIAGRAM (CHIMEL)	DOC	DOC	1	REF
0136	MS-1C3F-3458-AJA	0	N	N	SKETCH-WIRING DIAGRAM (HALL SENSOR	DOC	DOC	1	REF
0137	MS-1C3F-3458-AKA	0	N	N	SKETCH-WIRING DIAGRAM (KPD LAMP_DR	DOC	DOC	1	REF
0138	MS-1C3F-3458-ALA	0	N	N	SKETCH-WIRING DIAGRAM (MECH)	DOC	DOC	1	REF
0139	MS-1C3F-3458-AMA	0	N	N	SKETCH-WIRING DIAGRAM (A4WD MODE)	DOC	DOC	1	REF
0140	MS-1C3F-3458-ANA	0	N	N	SKETCH-WIRING DIAGRAM (IWIPE)	DOC	DOC	1	REF
0141	MS-1C3F-3458-APA	0	N	N	SKETCH-WIRING DIAGRAM (REARWIPE)	DOC	DOC	1	REF
0142	MS-1C3F-3458-ARA	0	N	N	SKETCH-WIRING DIAGRAM (BRAKE_FLUID	DOC	DOC	1	REF
0143	MS-1C3F-3458-ASA	0	N	N	SKETCH-WIRING DIAGRAM (DISII)	DOC	DOC	1	REF
0144	MS-1C3F-3458-AFA	0	N	N	SKETCH-WIRING DIAGRAM (CONTACT PLA	DOC	DOC	1	REF
0145	MS-1C3F-3458-AUA	0	N	N	SKETCH-WIRING DIAGRAM (KEYPAD_INPU	DOC	DOC	1	REF

Line	Part Number	Rev	Stat	SAR	Description	Symbol	Circuit	Level	Qty
0146	MS-1C3F-3458-AVA	0	N		SKETCH-WIRING DIAGRAM (RKE1)		DOC	1	REF
0147	1C3F-12A661-AA	0	N		FCC / Canada RF Certification	ADCLB	ADCLB	1	1
0148	1C3F-14A615-DA	1	R		BOARD-PRINTED WIRING MULTIPLE	DOC	DOC	1	AR
0149	1C3F-14A608-DA	0	N		BOARD - PRINTED WIRING			2	REF
0150	YC3F-10D952-EA	0	N		BOARD-PRINTED CIRCUIT MULTIPLE	MPWB		2	REF
0151	1C3F-14B216-EA	1	W		01 P131/UL37 ESOP+RKE GEM BD ASSY	ABDASY		1	MA
0152	1C3F-14A608-DA	0	N		BOARD - PRINTED WIRING			2	1
0153	N410172CFCCSBD	0	P		CAP,ALUM,100uF,20%,50V,SMD	C1	POWER	2	1
0154	N210368BFKA003	0	P		CAP, CERM, 10nF, 20%, 100V, 0805	C2	NO_REG	2	1
0155	N210368BFKA003	0	P		CAP, CERM, 10nF, 20%, 100V, 0805	C3	NO_REG	2	1
0156	N210368BFKA003	0	P		CAP, CERM, 10nF, 20%, 100V, 0805	C4	BATTER	2	1
0157	N210368BFKA003	0	P		CAP, CERM, 10nF, 20%, 100V, 0805	C5	BATTER	2	1
0158	N210247BFKAAAAB	0	P		CAP, CERM, 1nF, 10%, 50V, 0805	C6	HALL_P	2	1
0159	N210247BFKAAAAB	0	P		CAP, CERM, 1nF, 10%, 50V, 0805	C7	HALL_P	2	1
0160	N210247BFKAAAAB	0	P		CAP, CERM, 1nF, 10%, 50V, 0805	C8	POWER	2	1
0161	N210368BFKA003	0	P		CAP, CERM, 10nF, 20%, 100V, 0805	C9	NO_REG	2	1
0162	N210247BFKAAAAB	0	P		CAP, CERM, 1nF, 10%, 50V, 0805	C10	TMS371	2	1
0163	N210247BFKAAAAB	0	P		CAP, CERM, 1nF, 10%, 50V, 0805	C11	TMS371	2	1
0164	N210247BFKAAAAB	0	P		CAP, CERM, 1nF, 10%, 50V, 0805	C12	TMS371	2	1
0165	N210247BFKAAAAB	0	P		CAP, CERM, 1nF, 10%, 50V, 0805	C13	TMS371	2	1
0166	N210247BFKAAAAB	0	P		CAP, CERM, 1nF, 10%, 50V, 0805	C14	TMS371	2	1
0167	N210367BFKAAAAB	0	P		CAP, CERM, 10nF, 10%, 100V, 0805	C15	OSS_DR	2	1
0168	N210367BFKAAAAB	0	P		CAP, CERM, 10nF, 10%, 100V, 0805	C16	AN_	2	1
0169	N210367BFKAAAAB	0	P		CAP, CERM, 10nF, 10%, 100V, 0805	C17	OSS_DR	2	1
0170	N210367BFKAAAAB	0	P		CAP, CERM, 10nF, 10%, 100V, 0805	C18	OSS_DR	2	1
0171	N210367BFKAAAAB	0	P		CAP, CERM, 10nF, 10%, 100V, 0805	C19	OSS_DR	2	1
0172	N210367BFKAAAAB	0	P		CAP, CERM, 10nF, 10%, 100V, 0805	C20	OSS_DR	2	1
0173	N210368BFKA003	0	P		CAP, CERM, 10nF, 20%, 100V, 0805	C21	NO_REG	2	1
0174	N210368BFKA003	0	P		CAP, CERM, 10nF, 20%, 100V, 0805	C22	NO_REG	2	1
0175	N210368BFKA003	0	P		CAP, CERM, 10nF, 20%, 100V, 0805	C23	NO_REG	2	1
0176	N210368BFKA003	0	P		CAP, CERM, 10nF, 20%, 100V, 0805	C24	NO_REG	2	1
0177	N210247BFKAAAAB	0	P		CAP, CERM, 1nF, 10%, 50V, 0805	C26	INPUT	2	1
0178	N210247BFKAAAAB	0	P		CAP, CERM, 1nF, 10%, 50V, 0805	C37	INPUT	2	1
0179	N215066BFJAAAAB	0	P		CAP, CERM, 15pF, 5%, 100V, 0805	C41	ANT_MA	2	1
0180	N210368BFKA003	0	P		CAP, CERM, 10nF, 20%, 100V, 0805	C42	ANT_MA	2	1
0181	N282962BFJAAAAB	0	P		CAP, CERM, 8.2pF, 3%, 100V, 0805	C43	ANT_MA	2	DEP
0182	N210247BFKAAAAB	0	P		CAP, CERM, 1nF, 10%, 50V, 0805	C44	A4WD M	2	1
0183	N210247BFKAAAAB	0	P		CAP, CERM, 1nF, 10%, 50V, 0805	C45	IWIPE	2	1
0184	N210247BFKAAAAB	0	P		CAP, CERM, 1nF, 10%, 50V, 0805	C46	IWIPE	2	1
0185	N210247BFKAAAAB	0	P		CAP, CERM, 1nF, 10%, 50V, 0805	C47	IWIPE	2	1
0186	N210368BFKA003	0	P		CAP, CERM, 10nF, 20%, 100V, 0805	C55	NO_REG	2	1
0187	N210368BFKA003	0	P		CAP, CERM, 10nF, 20%, 100V, 0805	C56	NO_REG	2	1
0188	N210368BFKA003	0	P		CAP, CERM, 10nF, 20%, 100V, 0805	C57	NO_REG	2	1
0189	N210368BFKA003	0	P		CAP, CERM, 10nF, 20%, 100V, 0805	C58	NO_REG	2	1
0190	N210368BFKA003	0	P		CAP, CERM, 10nF, 20%, 100V, 0805	C59	NO_REG	2	1
0191	N210368BFKA003	0	P		CAP, CERM, 10nF, 20%, 100V, 0805	C60	NO_REG	2	1

Line	Part Number	Rev	Stat	SAR	Description	Symbol	Circuit	Level	Qty
0192	N210368BFKA003	0	P	N	CAP, CERM, 10nF, 20%, 100V, 0805	C61	NO_REG	2	1
0193	N210368BFKA003	0	P	N	CAP, CERM, 10nF, 20%, 100V, 0805	C62	NO_REG	2	1
0194	N210368BFKA003	0	P	N	CAP, CERM, 10nF, 20%, 100V, 0805	C63	NO_REG	2	1
0195	N210368BFKA003	0	P	N	CAP, CERM, 10nF, 20%, 100V, 0805	C64	NO_REG	2	1
0196	N210368BFKA003	0	P	N	CAP, CERM, 10nF, 20%, 100V, 0805	C65	NO_REG	2	1
0197	N210368BFKA003	0	P	N	CAP, CERM, 10nF, 20%, 100V, 0805	C66	NO_REG	2	1
0198	N210368BFKA003	0	P	N	CAP, CERM, 10nF, 20%, 100V, 0805	C67	NO_REG	2	1
0199	N210368BFKA003	0	P	N	CAP, CERM, 10nF, 20%, 100V, 0805	C68	NO_REG	2	1
0200	N210368BFKA003	0	P	N	CAP, CERM, 10nF, 20%, 100V, 0805	C69	NO_REG	2	1
0201	N210368BFKA003	0	P	N	CAP, CERM, 10nF, 20%, 100V, 0805	C70	NO_REG	2	1
0202	N210368BFKA003	0	P	N	CAP, CERM, 10nF, 20%, 100V, 0805	C71	NO_REG	2	1
0203	N210368BFKA003	0	P	N	CAP, CERM, 10nF, 20%, 100V, 0805	C72	NO_REG	2	1
0204	N210368BFKA003	0	P	N	CAP, CERM, 10nF, 20%, 100V, 0805	C73	NO_REG	2	1
0205	N210368BFKA003	0	P	N	CAP, CERM, 10nF, 20%, 100V, 0805	C74	NO_REG	2	1
0206	N210368BFKA003	0	P	N	CAP, CERM, 10nF, 20%, 100V, 0805	C75	NO_REG	2	1
0207	N210368BFKA003	0	P	N	CAP, CERM, 10nF, 20%, 100V, 0805	C76	NO_REG	2	1
0208	N210368BFKA003	0	P	N	CAP, CERM, 10nF, 20%, 100V, 0805	C77	NO_REG	2	1
0209	N210368BFKA003	0	P	N	CAP, CERM, 10nF, 20%, 100V, 0805	C78	NO_REG	2	1
0210	N210368BFKA003	0	P	N	CAP, CERM, 10nF, 20%, 100V, 0805	C79	NO_REG	2	1
0211	N210368BFKA003	0	P	N	CAP, CERM, 10nF, 20%, 100V, 0805	C80	NO_REG	2	1
0212	N210368BFKA003	0	P	N	CAP, CERM, 10nF, 20%, 100V, 0805	C81	NO_REG	2	1
0213	N210368BFKA003	0	P	N	CAP, CERM, 10nF, 20%, 100V, 0805	C82	NO_REG	2	1
0214	N210368BFKA003	0	P	N	CAP, CERM, 10nF, 20%, 100V, 0805	C83	NO_REG	2	1
0215	N210368BFKA003	0	P	N	CAP, CERM, 10nF, 20%, 100V, 0805	C84	NO_REG	2	1
0216	N210368BFKA003	0	P	N	CAP, CERM, 10nF, 20%, 100V, 0805	C85	NO_REG	2	1
0217	N210368BFKA003	0	P	N	CAP, CERM, 10nF, 20%, 100V, 0805	C86	NO_REG	2	1
0218	N210368BFKA003	0	P	N	CAP, CERM, 10nF, 20%, 100V, 0805	C87	NO_REG	2	1
0219	N210368BFKA003	0	P	N	CAP, CERM, 10nF, 20%, 100V, 0805	C88	NO_REG	2	1
0220	N210368BFKA003	0	P	N	CAP, CERM, 10nF, 20%, 100V, 0805	C89	NO_REG	2	1
0221	N210368BFKA003	0	P	N	CAP, CERM, 10nF, 20%, 100V, 0805	C90	NO_REG	2	1
0222	N210368BFKA003	0	P	N	CAP, CERM, 10nF, 20%, 100V, 0805	C91	NO_REG	2	1
0223	N210368BFKA003	0	P	N	CAP, CERM, 10nF, 20%, 100V, 0805	C92	NO_REG	2	1
0224	N210368BFKA003	0	P	N	CAP, CERM, 10nF, 20%, 100V, 0805	C93	NO_REG	2	1
0225	N210368BFKA003	0	P	N	CAP, CERM, 10nF, 20%, 100V, 0805	C94	NO_REG	2	1
0226	N210368BFKA003	0	P	N	CAP, CERM, 10nF, 20%, 100V, 0805	C95	NO_REG	2	1
0227	N210368BFKA003	0	P	N	CAP, CERM, 10nF, 20%, 100V, 0805	C96	NO_REG	2	1
0228	N210368BFKA003	0	P	N	CAP, CERM, 10nF, 20%, 100V, 0805	C97	NO_REG	2	1
0229	N210368BFKA003	0	P	N	CAP, CERM, 10nF, 20%, 100V, 0805	C98	NO_REG	2	1
0230	N210368BFKA003	0	P	N	CAP, CERM, 10nF, 20%, 100V, 0805	C99	NO_REG	2	1
0231	N210368BFKA003	0	P	N	CAP, CERM, 10nF, 20%, 100V, 0805	C100	NO_REG	2	1
0232	N210368BFKA003	0	P	N	CAP, CERM, 10nF, 20%, 100V, 0805	C101	NO_REG	2	1
0233	N210368BFKA003	0	P	N	CAP, CERM, 10nF, 20%, 100V, 0805	C102	NO_REG	2	1
0234	N210368BFKA003	0	P	N	CAP, CERM, 10nF, 20%, 100V, 0805	C103	NO_REG	2	1
0235	N210447BFKA003	0	P	N	CAP, CERM, 100nF, 10%, 50V, 0805	C104	POWER_	2	1
0236	N210447BFKA003	0	P	N	CAP, CERM, 100nF, 10%, 50V, 0805	C105	POWER_	2	1
0237	N210447BFKA003	0	P	N	CAP, CERM, 100nF, 10%, 50V, 0805	C106	POWER_	2	1

Line	Part Number	Rev	Stat	SAR	Description	Symbol	Circuit	Level	Qty
0238	N210447BFKAAA	0	P	N	CAP, CERM, 100nF, 10%, 50V, 0805	C107	POWER	2	1
0239	N210368BFKA003	0	P	N	CAP, CERM, 10nF, 20%, 100V, 0805	C108	START	2	1
0240	N210368BFKA003	0	P	N	CAP, CERM, 10nF, 20%, 100V, 0805	C109	START	2	1
0241	N210247BFKAAA	0	P	N	CAP, CERM, 1nF, 10%, 50V, 0805	C110	DISI	2	1
0242	N210368BFKA003	0	P	N	CAP, CERM, 10nF, 20%, 100V, 0805	C111	DISI	2	1
0243	N210247BFKAAA	0	P	N	CAP, CERM, 1nF, 10%, 50V, 0805	C112	CONTAC	2	1
0244	N210247BFKAAA	0	P	N	CAP, CERM, 1nF, 10%, 50V, 0805	C113	CONTAC	2	1
0245	N210247BFKAAA	0	P	N	CAP, CERM, 1nF, 10%, 50V, 0805	C114	CONTAC	2	1
0246	N210247BFKAAA	0	P	N	CAP, CERM, 1nF, 10%, 50V, 0805	C115	CONTAC	2	1
0247	N447032CFCCSDA	0	P	N	CAP, ALUM, 47uF, 20%, 16V, SMD	C116	POWER	2	1
0248	N210368BFKA003	0	P	N	CAP, CERM, 10nF, 20%, 100V, 0805	C204	NO_REG	2	1
0249	N210368BFKA003	0	P	N	CAP, CERM, 10nF, 20%, 100V, 0805	C205	NO_REG	2	1
0250	N210368BFKA003	0	P	N	CAP, CERM, 10nF, 20%, 100V, 0805	C206	NO_REG	2	1
0251	N210368BFKA003	0	P	N	CAP, CERM, 10nF, 20%, 100V, 0805	C207	NO_REG	2	1
0252	N210368BFKA003	0	P	N	CAP, CERM, 10nF, 20%, 100V, 0805	C208	NO_REG	2	1
0253	N210247BFKAAA	0	P	N	CAP, CERM, 1nF, 10%, 50V, 0805	C354	REARWI	2	1
0254	N571007BFAA	0	P	N	DIO, RECT, 70V, 200mA, SOT-23, BAV99	D1	CHIME2	2	1
0255	N542004BFAAMK	0	P	N	DIO, RECT, 400V, 1A, F5M, 1SR154-400	D3	BATTER	2	1
0256	N571006BFAA	0	P	N	DIO, RECT, 70V, 200mA, SOT-23, BAW56	D4	UW PHN	2	1
0257	N571007BFAA	0	P	N	DIO, RECT, 70V, 200mA, SOT-23, BAV99	D5	KPD LA	2	1
0258	N571007BFAA	0	P	N	DIO, RECT, 70V, 200mA, SOT-23, BAV99	D6	HALL S	2	1
0259	N700004CFSEFCA	0	P	N	O SEN IC, DISI, SOIC, 16	IC1	DISI 2	2	1
0260	N710017BFSRFFA	0	P	N	LSIDE IC, MC33291, SOIC, 24	IC2	OSS DR	2	1
0261	N710017BFSRFFA	0	P	N	LSIDE IC, MC33291, SOIC, 24	IC3	OSS DR	2	1
0262	N710017BFSRFFA	0	P	N	LSIDE IC, MC33291, SOIC, 24	IC4	OSS DR	2	1
0263	N700140BFBFBCB	0	P	N	VR LIN IC, CS8151DW16, SOIC, 16	IC5	POWER	2	1
0264	N760047CFKCHFA	0	P	N	UC8 IC, GEM, PLCC, 68	IC6	TMS370	2	1
0265	F58B-14A624-FB	0	P	N	SLEEVE ASSY- WIRING CONNECTOR	J1	NO REG	2	1
0266	F65B-14A464-FB	0	P	N	SLEEVE-ASY-WIRING CONNECTOR	J4	NO REG	2	1
0267	N807966-S36	0	P	N	SCREW M2.8x1.27x6 Hex Wshr Hd T/R		MECH	2	2
0268	N811457-S58	0	P	N	SCREW-M2.8 x 1.27 x 8.5 HEX		MECH	2	2
0269	97BP-14B093-CA	0	P	N	MOV, LEADED	MOV1	BATTER	2	2
0270	N611001BFCBAHA	0	P	N	TRANS, SBIP, PNP, 1A, 1W, SOT-89, BCX53-	Q1	PULLUP	2	1
0271	N611001BFBDBARA	0	P	N	TRANS, SBIP, PNP, 200mA, 1.5W, SOT223, P	Q3	KPD LA	2	1
0272	N611002BFBDBAGA	0	P	N	TRANS, SBIP, PNP, 500mA, 225mW, SOT-23,	Q4	PULL U	2	1
0273	N660308BFAAAGA	0	P	N	TRANS, BRES, NPN, 500mA, 330mW, SOT-23,	Q5	PULLUP	2	1
0274	N660308BFAAAGA	0	P	N	TRANS, BRES, NPN, 500mA, 330mW, SOT-23,	Q6	HALL S	2	1
0275	N660308BFAAAGA	0	P	N	TRANS, BRES, NPN, 500mA, 330mW, SOT-23,	Q7	KPD LA	2	1
0276	N660306BFAAAGA	0	P	N	TRANS, BRES, PNP, 100mA, 200mW, SOT-23,	Q8	5V SW	2	1
0277	N660308BFAAAGA	0	P	N	TRANS, BRES, NPN, 500mA, 330mW, SOT-23,	Q9	PULLUP	2	1
0278	N611003BFAEAGA	0	P	N	TRANS, SMOS, 220mA, 360mW, SOT-23, BSS1	Q10	CHIME2	2	1
0279	N610001BFBDBARA	0	P	N	TRANS, SBIP, PNP, 200mA, 1.5W, SOT223, P	Q11	HALL S	2	1
0280	N130035BFBWJCAE	0	P	N	RES, TF, 3Kohms, 5%, 250mW, 1210	R1	HOT IN	2	1
0281	N130035BFBWJCAE	0	P	N	RES, TF, 3Kohms, 5%, 250mW, 1210	R2	HOT IN	2	1
0282	N130035BFBWJCAE	0	P	N	RES, TF, 3Kohms, 5%, 250mW, 1210	R3	BRAKE	2	1
0283	N120035BFBWJCAE	0	P	N	RES, TF, 2Kohms, 5%, 250mW, 1210	R4	START	2	1

Line	Part Number	Rev	Stat	SAR	Description	Symbol	Circuit	Level	Qty
0284	N130035BFJMCAE	0	P	N	RES,TF,30Kohms,5%,250mW,1210	R5	KEY_RU	2	1
0285	N130035BFJMCAE	0	P	N	RES,TF,30Kohms,5%,250mW,1210	R6	KEY_RU	2	1
0286	N130035BFJMCAE	0	P	N	RES,TF,30Kohms,5%,250mW,1210	R7	KEY_RU	2	1
0287	N128043BFJMAAC	0	P	N	RES,TF,28Kohms,1%,100mW,0805	R9	BATER	2	1
0288	N168133BFENAAC	0	P	N	RES,TF,6.81Kohms,1%,100mW,0805	R10	BATER	2	1
0289	N147025BFEMAAC	0	P	N	RES,TF,4700ohms,5%,100mW,0805	R11	KEY_SW	2	1
0290	N151035BFEMAAC	0	P	N	RES,TF,5.1Kohms,5%,100mW,0805	R12	PULLUP	2	1
0291	N118743BFENAAC	0	P	N	RES,TF,18.7Kohms,1%,100mW,0805	R13	PULLUP	2	1
0292	N149943BFENAAC	0	P	N	RES,TF,49.9Kohms,1%,100mW,0805	R14	PULLUP	2	1
0293	N130045BFEMAAC	0	P	N	RES,TF,30Kohms,5%,100mW,0805	R18	CHIME2	2	1
0294	N151035BFEMAAC	0	P	N	RES,TF,5.1Kohms,5%,100mW,0805	R19	CHIME2	2	1
0295	N147025BFEMAAC	0	P	N	RES,TF,4700ohms,5%,100mW,0805	R20	HALL_S	2	1
0296	N151035BFEMAAC	0	P	N	RES,TF,5.1Kohms,5%,100mW,0805	R21	BRAKE	2	1
0297	N151035BFEMAAC	0	P	N	RES,TF,5.1Kohms,5%,100mW,0805	R22	PULLUP	2	1
0298	N147025BFEMAAC	0	P	N	RES,TF,4700ohms,5%,100mW,0805	R25	HALL_P	2	1
0299	N110045BFEMAAC	0	P	N	RES,TF,10Kohms,5%,100mW,0805	R29	OSS_DR	2	1
0300	N147025BFEMAAC	0	P	N	RES,TF,4700ohms,5%,100mW,0805	R31	KEY_SW	2	1
0301	N130045BFEMAAC	0	P	N	RES,TF,30Kohms,5%,100mW,0805	R32	L_DOOR	2	1
0302	N115045BFEMAAC	0	P	N	RES,TF,15Kohms,5%,100mW,0805	R33	L_DOOR	2	1
0303	N168025BFJMCAP	0	P	N	RES,TF,6800ohms,5%,500mW,2010	R34	KEY_SW	2	1
0304	N130045BFEMAAC	0	P	N	RES,TF,30Kohms,5%,100mW,0805	R35	L_DOOR	2	1
0305	N130045BFEMAAC	0	P	N	RES,TF,30Kohms,5%,100mW,0805	R36	L_DOOR	2	1
0306	N115045BFEMAAC	0	P	N	RES,TF,15Kohms,5%,100mW,0805	R37	L_DOOR	2	1
0307	N130045BFEMAAC	0	P	N	RES,TF,30Kohms,5%,100mW,0805	R38	L_DOOR	2	1
0308	N115045BFEMAAC	0	P	N	RES,TF,15Kohms,5%,100mW,0805	R39	L_DOOR	2	1
0309	N115045BFEMAAC	0	P	N	RES,TF,15Kohms,5%,100mW,0805	R40	L_DOOR	2	1
0310	N175043BFENAAC	0	P	N	RES,TF,75Kohms,1%,100mW,0805	R41	L_DOOR	2	1
0311	N130045BFEMAAC	0	P	N	RES,TF,30Kohms,5%,100mW,0805	R42	PRNDL	2	1
0312	N115045BFEMAAC	0	P	N	RES,TF,15Kohms,5%,100mW,0805	R43	PRNDL	2	1
0313	N130045BFEMAAC	0	P	N	RES,TF,30Kohms,5%,100mW,0805	R44	L_DOOR	2	1
0314	N115045BFEMAAC	0	P	N	RES,TF,15Kohms,5%,100mW,0805	R45	L_DOOR	2	1
0315	N130045BFEMAAC	0	P	N	RES,TF,30Kohms,5%,100mW,0805	R46	L_DOOR	2	1
0316	N115045BFEMAAC	0	P	N	RES,TF,15Kohms,5%,100mW,0805	R47	L_DOOR	2	1
0317	N130045BFEMAAC	0	P	N	RES,TF,30Kohms,5%,100mW,0805	R48	L_DOOR	2	1
0318	N115045BFEMAAC	0	P	N	RES,TF,15Kohms,5%,100mW,0805	R49	L_DOOR	2	1
0319	N130045BFEMAAC	0	P	N	RES,TF,30Kohms,5%,100mW,0805	R50	DOWN_W	2	1
0320	N115045BFEMAAC	0	P	N	RES,TF,15Kohms,5%,100mW,0805	R51	DOWN_W	2	1
0321	N130045BFEMAAC	0	P	N	RES,TF,30Kohms,5%,100mW,0805	R52	HEADLA	2	1
0322	N115045BFEMAAC	0	P	N	RES,TF,15Kohms,5%,100mW,0805	R53	HEADLA	2	1
0323	N130045BFEMAAC	0	P	N	RES,TF,30Kohms,5%,100mW,0805	R54	DOWN_W	2	1
0324	N115045BFEMAAC	0	P	N	RES,TF,15Kohms,5%,100mW,0805	R55	DOWN_W	2	1
0325	N130045BFEMAAC	0	P	N	RES,TF,30Kohms,5%,100mW,0805	R56	HOT_IN	2	1
0326	N115045BFEMAAC	0	P	N	RES,TF,15Kohms,5%,100mW,0805	R57	HOT_IN	2	1
0327	N130045BFEMAAC	0	P	N	RES,TF,30Kohms,5%,100mW,0805	R58	HOT_IN	2	1
0328	N115045BFEMAAC	0	P	N	RES,TF,15Kohms,5%,100mW,0805	R59	HOT_IN	2	1
0329	N130045BFEMAAC	0	P	N	RES,TF,30Kohms,5%,100mW,0805	R60	BRAKE	2	1

Line	Part Number	Rev	Stat	SAR	Description	Symbol	Circuit	Level	Qty
0330	N115045BFEMAAC	0	P	N	RES,TF,15KOhms,5%,100mW,0805	R61	BRAKE	2	1
0331	N130045BFEMAAC	0	P	N	RES,TF,30KOhms,5%,100mW,0805	R62	VEHICL	2	1
0332	N130045BFEMAAC	0	P	N	RES,TF,30KOhms,5%,100mW,0805	R63	VEHICL	2	1
0333	N149943BFENAAC	0	P	N	RES,TF,49.9KOhms,1%,100mW,0805	R64	VEHICL	2	1
0334	N110035BFEMAAC	0	P	N	RES,TF,1KOhms,5%,100mW,0805	R65	START	2	1
0335	N130045BFEMAAC	0	P	N	RES,TF,30KOhms,5%,100mW,0805	R66	START	2	1
0336	N130045BFEMAAC	0	P	N	RES,TF,30KOhms,5%,100mW,0805	R67	START	2	1
0337	N175043BFENAAC	0	P	N	RES,TF,75KOhms,1%,100mW,0805	R68	START	2	1
0338	N113015BFEMAAC	0	P	N	RES,TF,13KOhms,5%,100mW,0805	R69	HALL_S	2	1
0339	N130045BFEMAAC	0	P	N	RES,TF,30KOhms,5%,100mW,0805	R73	KEYPAD	2	1
0340	N115045BFEMAAC	0	P	N	RES,TF,15KOhms,5%,100mW,0805	R74	KEYPAD	2	1
0341	N115045BFEMAAC	0	P	N	RES,TF,15KOhms,5%,100mW,0805	R75	KEYPAD	2	1
0342	N130045BFEMAAC	0	P	N	RES,TF,30KOhms,5%,100mW,0805	R76	KEYPAD	2	1
0343	N115045BFEMAAC	0	P	N	RES,TF,15KOhms,5%,100mW,0805	R77	KEYPAD	2	1
0344	N130045BFEMAAC	0	P	N	RES,TF,30KOhms,5%,100mW,0805	R78	KEYPAD	2	1
0345	N15045BFEMAAC	0	P	N	RES,TF,15KOhms,5%,100mW,0805	R81	CONTAC	2	1
0346	N130045BFEMAAC	0	P	N	RES,TF,30KOhms,5%,100mW,0805	R82	CONTAC	2	1
0347	N130045BFEMAAC	0	P	N	RES,TF,30KOhms,5%,100mW,0805	R83	CONTAC	2	1
0348	N115045BFEMAAC	0	P	N	RES,TF,15KOhms,5%,100mW,0805	R84	CONTAC	2	1
0349	N115045BFEMAAC	0	P	N	RES,TF,15KOhms,5%,100mW,0805	R85	CONTAC	2	1
0350	N130045BFEMAAC	0	P	N	RES,TF,30KOhms,5%,100mW,0805	R86	CONTAC	2	1
0351	N130045BFEMAAC	0	P	N	RES,TF,30KOhms,5%,100mW,0805	R87	CONTAC	2	1
0352	N115045BFEMAAC	0	P	N	RES,TF,15KOhms,5%,100mW,0805	R88	CONTAC	2	1
0353	N168025BFKMCFA	0	P	N	RES,TF,680Ohms,5%,500mW,2010	R89	CONTAC	2	1
0354	N168025BFKMCFA	0	P	N	RES,TF,680Ohms,5%,500mW,2010	R90	CONTAC	2	1
0355	N168025BFKMCFA	0	P	N	RES,TF,680Ohms,5%,500mW,2010	R91	CONTAC	2	1
0356	N168025BFKMCFA	0	P	N	RES,TF,680Ohms,5%,500mW,2010	R92	CONTAC	2	1
0357	N175043BFENAAC	0	P	N	RES,TF,75KOhms,1%,100mW,0805	R93	A4WD M	2	1
0358	N149943BFENAAC	0	P	N	RES,TF,49.9KOhms,1%,100mW,0805	R94	A4WD M	2	1
0359	N139233BFENAAC	0	P	N	RES,TF,3.92KOhms,1%,100mW,0805	R95	A4WD M	2	1
0360	N175043BFENAAC	0	P	N	RES,TF,75KOhms,1%,100mW,0805	R96	IWIPE	2	1
0361	N130045BFEMAAC	0	P	N	RES,TF,30KOhms,5%,100mW,0805	R97	IWIPE	2	1
0362	N115045BFEMAAC	0	P	N	RES,TF,15KOhms,5%,100mW,0805	R98	IWIPE	2	1
0363	N149943BFENAAC	0	P	N	RES,TF,49.9KOhms,1%,100mW,0805	R99	IWIPE	2	1
0364	N149943BFENAAC	0	P	N	RES,TF,49.9KOhms,1%,100mW,0805	R100	IWIPE	2	1
0365	N175043BFENAAC	0	P	N	RES,TF,75KOhms,1%,100mW,0805	R101	IWIPE	2	1
0366	N130045BFEMAAC	0	P	N	RES,TF,30KOhms,5%,100mW,0805	R102	BRAKE	2	1
0367	N115045BFEMAAC	0	P	N	RES,TF,15KOhms,5%,100mW,0805	R103	BRAKE	2	1
0368	N115045BFEMAAC	0	P	N	RES,TF,15KOhms,5%,100mW,0805	R104	BRAKE	2	1
0369	N130045BFEMAAC	0	P	N	RES,TF,30KOhms,5%,100mW,0805	R105	BRAKE	2	1
0370	N120045BFEMAAC	0	P	N	RES,TF,20KOhms,5%,100mW,0805	R106	DISI	2	1
0371	N133233BFENAAC	0	P	N	RES,TF,3.32KOhms,1%,100mW,0805	R107	DISI	2	1
0372	N133233BFENAAC	0	P	N	RES,TF,3.32KOhms,1%,100mW,0805	R108	DISI	2	1
0373	N147025BFEMAAC	0	P	N	RES,TF,4700Ohms,5%,100mW,0805	R114	DISI	2	1
0374	N113015BFEMAAC	0	P	N	RES,TF,13KOhms,5%,100mW,0805	R118	KPD LA	2	1
0375	N168025BFKMCFA	0	P	N	RES,TF,680Ohms,5%,500mW,2010	R119	KEY_SW	2	1

Line	Part Number	Rev	Stat	SAR	Description	Symbol	Circuit	Level	Qty
0376	N115045BEFMAAC	0	P	N	RES,TF,15KOhms,5%,100mW,0805	R120	L_DOOR	2	1
0377	N168025BFKMCAC	0	P	N	RES,TF,680Ohms,5%,500mW,2010	R121	KEY_SW	2	1
0378	N168025BFKMCAC	0	P	N	RES,TF,680Ohms,5%,500mW,2010	R122	KEY_SW	2	1
0379	N151035BEFMAAC	0	P	N	RES,TF,5.1KOhms,5%,100mW,0805	R123	KEY_SW	2	1
0380	N168025BFKMCAC	0	P	N	RES,TF,680Ohms,5%,500mW,2010	R124	PRNDL	2	1
0381	N168025BFKMCAC	0	P	N	RES,TF,680Ohms,5%,500mW,2010	R125	KEY_SW	2	1
0382	N168025BFKMCAC	0	P	N	RES,TF,680Ohms,5%,500mW,2010	R126	KEY_SW	2	1
0383	N168025BFKMCAC	0	P	N	RES,TF,680Ohms,5%,500mW,2010	R127	KEY_SW	2	1
0384	N168025BFKMCAC	0	P	N	RES,TF,680Ohms,5%,500mW,2010	R128	KEYPAD	2	1
0385	N168025BFKMCAC	0	P	N	RES,TF,680Ohms,5%,500mW,2010	R129	KEYPAD	2	1
0386	N168025BFKMCAC	0	P	N	RES,TF,680Ohms,5%,500mW,2010	R130	KEYPAD	2	1
0387	N168025BFKMCAC	0	P	N	RES,TF,680Ohms,5%,500mW,2010	R131	KEYPAD	2	1
0388	N175025BFLMCAG	0	P	N	RES,TF,750Ohms,5%,1W,2512	R132	DOWN_W	2	1
0389	N175025BFLMCAG	0	P	N	RES,TF,750Ohms,5%,1W,2512	R133	HEADIA	2	1
0390	N175025BFLMCAG	0	P	N	RES,TF,750Ohms,5%,1W,2512	R134	DOWN_W	2	1
0391	N116233BFENAAE	0	P	N	RES,TF,1.62KOhms,1%,125mW,1206	R135	IWIPE	2	1
0392	N116233BFENAAE	0	P	N	RES,TF,1.62KOhms,1%,125mW,1206	R136	IWIPE	2	1
0393	N147005BFEMAAC	0	P	N	RES,TF,4.7KOhms,5%,100mW,0805	R137	TMS370	2	1
0394	N175043BFENAAE	0	P	N	RES,TF,75KOhms,1%,100mW,0805	R310	REARWI	2	1
0395	N149943BFENAAE	0	P	N	RES,TF,49.9KOhms,1%,100mW,0805	R311	REARWI	2	1
0396	N130045BFEMAAC	0	P	N	RES,TF,30KOhms,5%,100mW,0805	R323	HALL_S	2	1
0397	N115045BEFMAAC	0	P	N	RES,TF,15KOhms,5%,100mW,0805	R324	HALL_S	2	1
0398	N168025BFKMCAC	0	P	N	RES,TF,680Ohms,5%,500mW,2010	R325	KEY_SW	2	1
0399	N116233BFENAAE	0	P	N	RES,TF,1.62KOhms,1%,125mW,1206	R335	REARWI	2	1
0400	N130045BFEMAAC	0	P	N	RES,TF,30KOhms,5%,100mW,0805	R369	L_DOOR	2	1
0401	N115045BEFMAAC	0	P	N	RES,TF,15KOhms,5%,100mW,0805	R370	L_DOOR	2	1
0402	N130045BFEMAAC	0	P	N	RES,TF,30KOhms,5%,100mW,0805	R371	L_DOOR	2	1
0403	N115045BEFMAAC	0	P	N	RES,TF,15KOhms,5%,100mW,0805	R372	L_DOOR	2	1
0404	N168025BFKMCAC	0	P	N	RES,TF,680Ohms,5%,500mW,2010	R424	KEY_SW	2	1
0405	F75F-14B074-AA	0	P	N	2PIN CHIME ANNUNCIATOR	TR1	CHIME	2	1
0406	F6LF-14A650-AA	0	P	N	RCERM,12MHZ,CSTCS MT	Y1	TMS370	2	1
0407	N511010BFAEAKA	0	P	N	DIO,ZENR,14V,5%,225mW,SOT-23,MMBZ5	Z1	PULLUP	2	1
0408	N550013BFAEAKA	0	P	N	DIO,ZENR,5.1V,5%,225mW,SOT-23,MMBZ5	Z2	START	2	1
0409	N521009BFAEAKA	0	P	N	DIO,ZENR,24V,5%,225mW,SOT-23,MMBZ5	Z3	HALL_P	2	1
0410	N100009BFEZAAC	0	P	N	RES,TF,0Ohms,,0805	L1	ANT_MA	2	1
0411	YC3F-19A381-AB	0	P	N	ANTENNA	MANT2	MECH	2	1
0412	YC3F-14B115-AB	3	R	N	BOARD ASSY - 315MHZ SIP	RF SIP	UWI37_	2	1
0413	XW4F-14A608-AJA	0	P	N	BOARD - PRINTED WIRING	MPWB		3	1
0414	ES-YC3F-14B115-AA	0	P	N	SPEC-MODULE-MULT FUNC CONT		DOC	3	REF
0415	MS-YC3F-3458-AZA	0	P	N	SKETCH-WIRING DIAGRAM (REMOTE ENTR		DOC	3	REF
0416	XW4F-14A615-AEA	2	R	N	BD -PRT WIRING PANEL - 24 UP		DOC	3	AR
0417	XW4F-10D952-VA	0	P	N	BOARD - PRNT WIRING MULT		DOC	4	REF
0418	XW4F-14A608-AJA	0	P	N	BOARD - PRINTED WIRING		DOC	4	REF
0419	N218042BFJAAAA	0	P	N	CAP,CERM,18pF,1.4%,50V,0603	C201	FILTER	3	1
0420	N212042BFJAAAA	0	P	N	CAP,CERM,12pF,2%,50V,0603	C202	FILTER	3	1
0421	N210347BFKAAAA	0	P	N	CAP,CERM,10nF,10%,50V,0603	C203	AMP	3	1

Line	Part Number	Rev	Stat	SAR	Description	Symbol	Circuit	Level	Qty
0422	N247146BFJAAAA	0	P	N	CAP, CERM, 470PF, 5%, 50V, 0603	C204	AMP	3	1
0423	N247146BFJAAAA	0	P	N	CAP, CERM, 470PF, 5%, 50V, 0603	C206	AMP	3	1
0424	N222942BFJAAAA	0	P	N	CAP, CERM, 2.2PF, 11%, 50V, 0603	C208	OSC	3	1
0425	N210247BFKAAAA	0	P	N	CAP, CERM, 1nF, 10%, 50V, 0603	C209	OSC	3	1
0426	N256962BFJAAAA	0	P	N	CAP, CERM, 5.6PF, 5%, 100V, 0603	C210	OSC	3	1
0427	N247046BFJAAAA	0	P	N	CAP, CERM, 47PF, 5%, 50V, 0603	C211	OSC	3	1
0428	N210246BFJAAAA	0	P	N	CAP, CERM, 1nF, 5%, 50V, 0805	C212	OSC	3	1
0429	N210247BFKAAAA	0	P	N	CAP, CERM, 1nF, 10%, 50V, 0603	C213	OSC	3	1
0430	N212942BFJAAAA	0	P	N	CAP, CERM, 1.2PF, 20%, 50V, 0603	C222	OSC	3	1
0431	N210347BFKAAAA	0	P	N	CAP, CERM, 10nF, 10%, 50V, 0603	C223	OSC	3	1
0432	N233046BFJAAAA	0	P	N	CAP, CERM, 33PF, 5%, 50V, 0603	C226	AMP	3	1
0433	N218042BFJAAAA	0	P	N	CAP, CERM, 18PF, 1.4%, 50V, 0603	C234	AMP	3	1
0434	N210042BFJAAAA	0	P	N	CAP, CERM, 10PF, 2.5%, 50V, 0603	C236	FILTER	3	1
0435	N256046BFJAAAA	0	P	N	CAP, CERM, 56PF, 5%, 50V, 0603	C239	FILTER	3	1
0436	N210146BFJAAAA	0	P	N	CAP, CERM, 100PF, 5%, 50V, 0603	C240	AMP	3	1
0437	N247146BFJAAAA	0	P	N	CAP, CERM, 470PF, 5%, 50V, 0603	C242	FILTER	3	1
0438	N415011BFEAAB	0	P	N	CAP, TANT, 15uF, 10%, 6V, TA-B	C247	POWER	3	1
0439	N210447BFKAAAA	0	P	N	CAP, CERM, 100nF, 10%, 50V, 0805	C248	POWER	3	1
0440	N210247BFKAAAA	0	P	N	CAP, CERM, 1nF, 10%, 50V, 0603	C250	BBAND	3	1
0441	N210247BFKAAAA	0	P	N	CAP, CERM, 1nF, 10%, 50V, 0603	C251	BBAND	3	1
0442	N447931BFEAAB	0	P	N	CAP, TANT, 4.7uF, 10%, 16V, TA-B	C252	BBAND	3	1
0443	N222447BFKAAAF	0	P	N	CAP, CERM, 220nF, 10%, 50V, 1206	C253	BBAND	3	1
0444	N210447BFKAAAA	0	P	N	CAP, CERM, 100nF, 10%, 50V, 0805	C254	BBAND	3	1
0445	N268942BFJAAAA	0	P	N	CAP, CERM, 6.8PF, 4%, 50V, 0603	C300	FILTER	3	1
0446	N210347BFKAAAA	0	P	N	CAP, CERM, 10nF, 10%, 50V, 0603	C302	BBAND	3	1
0447	N210347BFKAAAA	0	P	N	CAP, CERM, 10nF, 10%, 50V, 0603	C303	BBAND	3	1
0448	N700640BFFB000	0	P	N	VR_LIN IC, TLE4286G, SCT595, 5	IC1	POWER	3	1
0449	N700013BFFCFA	0	P	N	OPAMP IC, LM29020, SOIC, 14	IC201	BBAND	3	1
0450	YC3F-12A664-AA	0	P	N	AMP 6-pin right angle conn	MJ5	CONN	3	1
0451	F5RF-14A651-AA	0	P	N	IND, 35-40N, TUNER	L202	OSC	3	1
0452	NL10941BF10SFC	0	P	N	ELEC, IND, 0603	L203	OSC	3	1
0453	NL12731BF10SFC	0	P	N	ELEC, IND, 0603	L204	AMP	3	1
0454	NL00009BFDZCAD	0	P	N	RES, TF, 0Ohms, , , , 0603	L205	AMP	3	1
0455	NL33731BF10SFC	0	P	N	ELEC, IND, 0603	L206	FILTER	3	1
0456	NL22731BF10SFC	0	P	N	ELEC, IND, 0603	L207	FILTER	3	1
0457	NL27731BF10SFC	0	P	N	ELEC, IND, 0603	L208	FILTER	3	1
0458	ESF-M13B46-A	0	P	N	FLUX	MFLUX		3	AR
0459	ESF-M11A18-A	0	P	N	SOLDER (EUTC 63/37)	MSOLD		3	AR
0460	WSS-M11A44-A6	0	P	N	SOLDER PASTE-NO CLEAN	MSOLDP		3	AR
0461	N620003BFAAAGA	0	P	N	TRANS, SBIP, NPN, 50mA, 225mW, SOT-23, B	Q201	AMP	3	1
0462	N620003BFAAAGA	0	P	N	TRANS, SBIP, NPN, 50mA, 225mW, SOT-23, B	Q202	AMP	3	1
0463	N620003BFAAAGA	0	P	N	TRANS, SBIP, NPN, 50mA, 225mW, SOT-23, B	Q203	OSC	3	1
0464	N620003BFAAAGA	0	P	N	TRANS, SBIP, NPN, 50mA, 225mW, SOT-23, B	Q207	OSC	3	1
0465	N191035BFDWCAD	0	P	N	RES, TF, 9.1KOhms, 5%, 63mW, 0603	R201	AMP	3	1
0466	N147035BFDWCAD	0	P	N	RES, TF, 4.7KOhms, 5%, 63mW, 0603	R202	AMP	3	1
0467	N133035BFDWCAD	0	P	N	RES, TF, 3.3KOhms, 5%, 63mW, 0603	R204	AMP	3	1

Line	Part Number	Rev	Stat	SAR	Description	Symbol	Circuit	Level	Qty
0468	N120025BFDMCAD	0	P	N	RES, TF, 200Ohms, 5%, 63mW, 0603	R206	AMP	3	1
0469	N115043BFDMCAD	0	P	N	RES, TF, 15KOhms, 1%, 63mW, 0603	R207	OSC	3	1
0470	N182533BFDMCAD	0	P	N	RES, TF, 8.25KOhms, 1%, 63mW, 0603	R208	OSC	3	1
0471	N112035BFDMCAD	0	P	N	RES, TF, 1.2KOhms, 5%, 63mW, 0603	R209	OSC	3	1
0472	N12143BFDNACAD	0	P	N	RES, TF, 22.1KOhms, 1%, 63mW, 0603	R210	OSC	3	1
0473	N182533BFDMCAD	0	P	N	RES, TF, 8.25KOhms, 1%, 63mW, 0603	R211	OSC	3	1
0474	N120025BFDMCAD	0	P	N	RES, TF, 200Ohms, 5%, 63mW, 0603	R226	AMP	3	1
0475	N120025BFDMCAD	0	P	N	RES, TF, 200Ohms, 5%, 63mW, 0603	R234	AMP	3	1
0476	N115043BFDMCAD	0	P	N	RES, TF, 15KOhms, 1%, 63mW, 0603	R240	BBAND	3	1
0477	N118045BFDMCAD	0	P	N	RES, TF, 18KOhms, 5%, 63mW, 0603	R241	BBAND	3	1
0478	N162055BFDMCAD	0	P	N	RES, TF, 620KOhms, 5%, 63mW, 0603	R242	BBAND	3	1
0479	N110065BFDMCAD	0	P	N	RES, TF, 1MOhms, 5%, 63mW, 0603	R243	BBAND	3	1
0480	N110055BFDMCAD	0	P	N	RES, TF, 100KOhms, 5%, 63mW, 0603	R244	BBAND	3	1
0481	N110055BFDMCAD	0	P	N	RES, TF, 100KOhms, 5%, 63mW, 0603	R245	BBAND	3	1
0482	N147065BFDMCAD	0	P	N	RES, TF, 4.7MOhms, 5%, 63mW, 0603	R246	BBAND	3	1
0483	N156035BFDMCAD	0	P	N	RES, TF, 5.6KOhms, 5%, 63mW, 0603	R247	BBAND	3	1
0484	N110065BFDMCAD	0	P	N	RES, TF, 1MOhms, 5%, 63mW, 0603	R248	BBAND	3	1
0485	N110065BFDMCAD	0	P	N	RES, TF, 1MOhms, 5%, 63mW, 0603	R249	BBAND	3	1
0486	N110055BFDMCAD	0	P	N	RES, TF, 100KOhms, 5%, 63mW, 0603	R250	BBAND	3	1
0487	N139055BFEWAAC	0	P	N	RES, TF, 390KOhms, 5%, 100mW, 0805	R251	BBAND	3	1
0488	N110055BFDMCAD	0	P	N	RES, TF, 100KOhms, 5%, 63mW, 0603	R254	BBAND	3	1
0489	N110025BFDMCAD	0	P	N	RES, TF, 100Ohms, 5%, 63mW, 0603	R255	BBAND	3	1
0490	N139055BFDMCAD	0	P	N	RES, TF, 390KOhms, 5%, 63mW, 0603	R300	BBAND	3	1
0491	N110055BFDMCAD	0	P	N	RES, TF, 150KOhms, 5%, 63mW, 0603	R301	BBAND	3	1
0492	N110055BFDMCAD	0	P	N	RES, TF, 100KOhms, 5%, 63mW, 0603	R302	BBAND	3	1
0493	N110055BFDMCAD	0	P	N	RES, TF, 100KOhms, 5%, 63mW, 0603	R303	BBAND	3	1
0494	N139055BFEWAAC	0	P	N	RES, TF, 390KOhms, 5%, 100mW, 0805	R304	BBAND	3	1