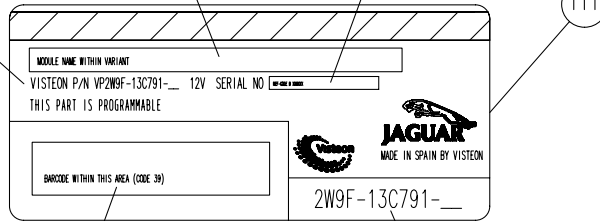


MODULE NAME
DESCRIPTION: NAME AND VARIANT
(SEE TABLE)
CHARACTERS TO BE ARIAL NARROW
5.0 HIGH
EXAMPLE:
DRIVER DOOR MODULE 315 MHZ

SERIAL NUMBER
DESCRIPTION: CONTAINING 10 CHARACTERS
TO BE ARIAL NARROW 3.0 HIGH
TYPE: BASE 34
STARTING WITH THREE CHARACTERS
DESCRIBING THE REF-CODE RELATED
TO MODULE PLUS FIX DIGIT PLUS A
RUNNING NUMBER WITH 6 DIGITS
REF-CODE: SEE TABLE
FIXED DIGIT: B

EXAMPLE: RUNNING NO. 123456
FIELD INFO: ZXAB123456

VISTEON PART NUMBER
DESCRIPTION:
CHARACTERS TO BE
ARIAL NARROW 3.0 HIGH
EXAMPLE:
VISTEON P/N VP2W9F-13C791-__ 12V
(ACCORDING TO TABLE)



BAR CODE TO APPEAR IN THIS AREA
BAR CODE CONTAINS THREE CHARACTERS
RELATED TO MODULE FOLLOWED BY THE
SERIAL NUMBER (10 CHARACTERS)
BAR CODE TO BE CODE 39

CUSTOMER PART NUMBER (SEE TABLE)
DESCRIPTION: CHARACTERS TO BE
ARIAL NARROW 5.0 HIGH
EXAMPLE: 2W9F-13C791-__

LABEL PRINTED INFORMATION

LABEL TO BE SUPPLIED ON RELEASE PAPER
PRINTING SHALL BE BLACK PERMANENT INK
WHICH MUST BE EASILY READ OVER COLOUR
STRIPE

LABEL INFORMATION TO BE PRINTED ON
BLANC LABEL: 2W9F-12A661-__
ACCORDING TO TABLE

BAR CODE MESSAGE: START 8 ALPHAS STOP

BAR CODE TO BE CODE 39
NARROW BAR WIDTH (NBW) 0.178+/-0.001
WIDE NARROW RATIO 2.24:1
QUIET ZONE OF BAR CODE ALLOWED TO BE
IN THE 2MM GAP TO THE SIDES OF THE
BAR CODE HIGHT OF BAR CODE STRIPES:
6MM BAR CODE EXAMPLE: ZXAB12345

RUNNING NUMBERING TYPE: BASE 34
RUNNING NUMBERING SPECIFICATION:
STARTING WITH 000001 AND ENDING WITH
ZZZZZ THE FOLLOWING CHARACTERS ARE
NOT ALLOWED: I AND O

ALL INFORMATION ON THE LABEL PRINTED
BY VISTEON MANUFACTURING PLANT

INFORMATION AND ITS POSITION IN
THE LABEL ARE APPROXIMATELY SHOWN

ALL SUFFIXES MUST BE COMPLETED
ACCORDING TO THE REVISION-LEVEL
GIVEN ON THE REFERRING DRAWING
(IN RELATION OF THE CONTENT
OF ITS TEXT)

EC-MARK ACCORDING TO
DIRECTIVE 95/56/EC:

SYMBOL AND APPROVAL NUMBER

CHARACTERS TO BE ARIAL

SYMBOL LENGTH : a
SYMBOL WIDTH : 2/3 a
CHARACTER HIGHT : 1/3 a

APPROVAL NUMBER HEIGHT: 1/3 a

a MIN 5mm

EC-MARK ACCORDING TO
DIRECTIVE UN-ECE REG. 97:

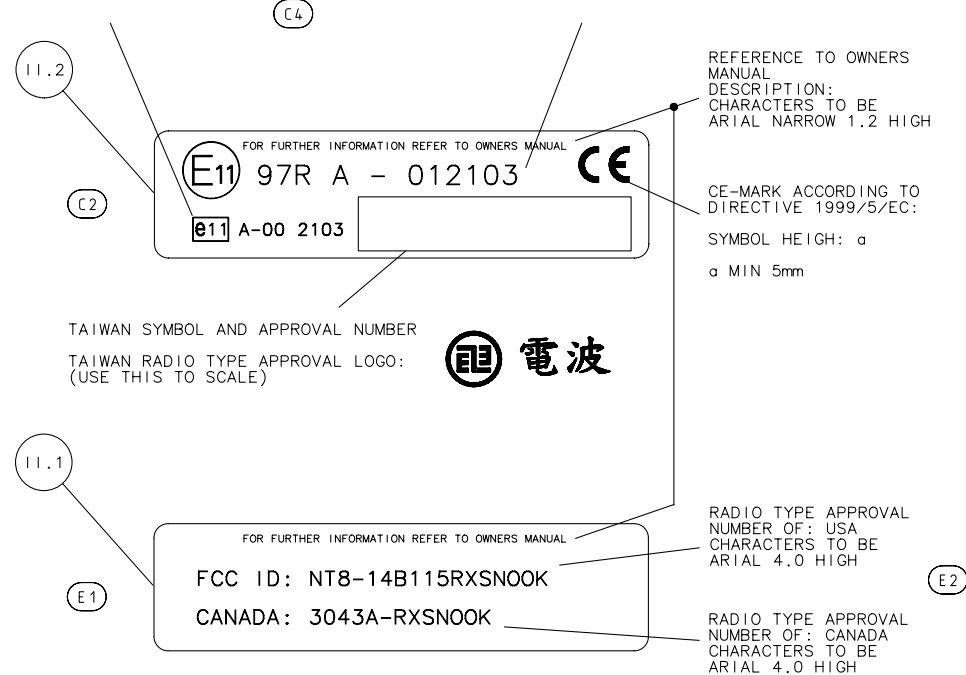
SYMBOL AND APPROVAL NUMBER

CHARACTERS TO BE ARIAL

SYMBOL DIAMETER : a
FIRST CHARACTER HEIGHT: 1/2 a
SECOND CHARACTER HIGHT : 1/3 a

APPROVAL NUMBER HEIGHT: 1/3 a

a MIN 8mm



TAIWAN SYMBOL AND APPROVAL NUMBER

TAIWAN RADIO TYPE APPROVAL LOGO:
(USE THIS TO SCALE)

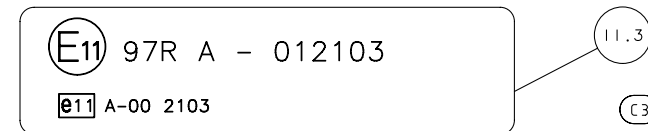


RADIO TYPE APPROVAL
NUMBER OF: USA
CHARACTERS TO BE
ARIAL 4.0 HIGH

RADIO TYPE APPROVAL
NUMBER OF: CANADA
CHARACTERS TO BE
ARIAL 4.0 HIGH

THE LABEL POS I1.3:
FOR VISUAL INFORMATION ONLY
DRAWING: VK2W9F-18N173-L
BLANC-LABEL: VP2W9F-12A661-C__

(E1) (C1)
(F1) (C2)
(G1)



II,1	VP2W9F-12A661-CA	VK2W9F-18N173-MD
II,2	VP2W9F-12A661-CA	VK2W9F-18N173-NB
III	2W9F-12A661-RB	VK2W9F-18N173-FA
III	2W9F-12A661-TB	VK2W9F-18N173-GA
III	2W9F-12A661-SB	VK2W9F-18N173-HA
POS	BLANC-LABEL USED	LABEL PRINT INFORMATION

SCALE 2 : 1