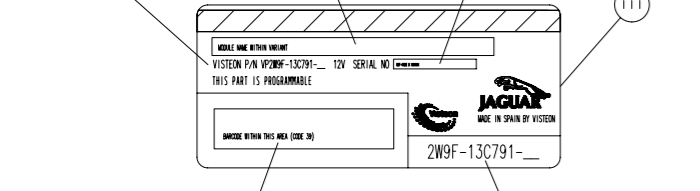


MODULE NAME
DESCRIPTION: NAME AND VARIANT
(SEE TABLE)
CHARACTERS TO BE ARIAL NARROW
5.0 HIGH
EXAMPLE:
DRIVER DOOR MODULE 315 MHZ

SERIAL NUMBER
DESCRIPTION: CONTAINING 10 CHARACTERS
TO BE ARIAL NARROW 3.0 HIGH
TYPE: BASE 34
STARTING WITH THREE CHARACTERS
DESCRIBING THE REF-CODE RELATED
TO MODULE PLUS FIX DIGIT PLUS A
RUNNING NUMBER WITH 6 DIGITS
REF-CODE: SEE TABLE
FIXED DIGIT: B
EXAMPLE: RUNNING NO. 123456
FIELD INFO: ZXAB123456



BAR CODE TO APPEAR IN THIS AREA
BAR CODE CONTAINS THREE CHARACTERS
RELATED TO MODULE FOLLOWED BY THE
SERIAL NUMBER (10 CHARACTERS)
BAR CODE TO BE CODE 39

CUSTOMER PART NUMBER (SEE TABLE)
DESCRIPTION: CHARACTERS TO BE
ARIAL NARROW 5.0 HIGH
EXAMPLE: 2W9F-13C791-12V

LABEL PRINTED INFORMATION

LABEL TO BE SUPPLIED ON RELEASE PAPER
PRINTING SHALL BE BLACK PERMANENT INK
WHICH MUST BE EASILY READ OVER COLOUR
STRIPES

LABEL INFORMATION TO BE PRINTED ON
BLANC LABEL 2W9F-12A661-12V
ACCORDING TO TABLE

BAR CODE MESSAGE: START 8 ALPHAS STOP

BAR CODE TO BE CODE 39
NARROW BAR WIDTH (NBW) 0.178+/-0.001
WIDE NARROW RATIO 2.24:1
QUIET ZONE OF BAR CODE ALLOWED TO BE
IN THE 2MM GAP TO THE SIDES OF THE
BAR CODE HEIGHT OF BAR CODE STRIPES:
6MM BAR CODE EXAMPLE: XZAB12345

RUNNING NUMBERING TYPE: BASE 34
RUNNING NUMBERING SPECIFICATION:
STARTING WITH 000001 AND ENDING WITH
ZZZZZZ THE FOLLOWING CHARACTERS ARE
NOT ALLOWED: 1 AND 0

ALL INFORMATION ON THE LABEL PRINTED
BY VISTEON MANUFACTURING PLANT

INFORMATION AND ITS POSITION IN
THE LABEL ARE APPROXIMATELY SHOWN

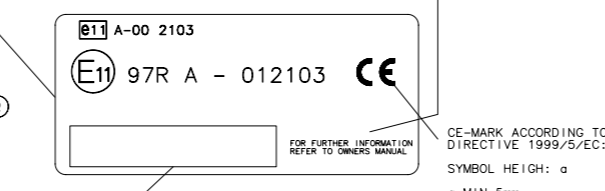
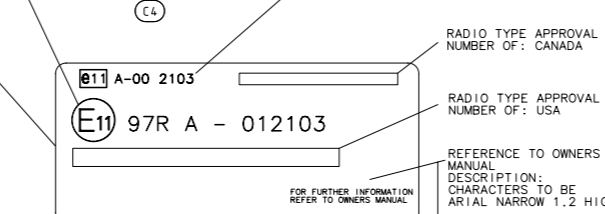
ALL SUFFIXES MUST BE COMPLETED
ACCORDING TO THE REVISION-LEVEL
GIVEN ON THE REFERRING DRAWING
(IN RELATION OF THE CONTENT
OF ITS TEXT)

EC-MARK ACCORDING TO
DIRECTIVE UN-ECE REG. 97:
SYMBOL AND APPROVAL NUMBER
CHARACTERS TO BE ARIAL

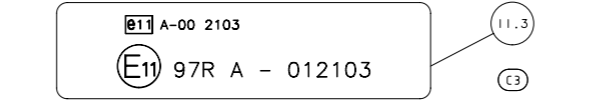
SYMBOL DIAMETER : a
FIRST CHARACTER HEIGHT: 1/2 a
SECOND CHARACTER HEIGHT: 1/3 a
APPROVAL NUMBER HEIGHT: 1/3 a
a MIN 8mm

EC-MARK ACCORDING TO
DIRECTIVE 95/56/EC:
SYMBOL AND APPROVAL NUMBER
CHARACTERS TO BE ARIAL

SYMBOL LENGTH : 2/3 a
SYMBOL WIDTH : 2/3 a
CHARACTER HEIGHT : 1/3 a
APPROVAL NUMBER HEIGHT: 1/3 a
a MIN 5mm



TAIWAN SYMBOL AND APPROVAL NUMBER
TAIWAN RADIO TYPE APPROVAL LOGO:
(USE THIS TO SCALE)



II.1	2W9F-12A661-BA	VK2W9F-18N173-MB
II.2	2W9F-12A661-BA	VK2W9F-18N173-NA
III	2W9F-12A661-RB	VK2W9F-18N173-FA
III	2W9F-12A661-TB	VK2W9F-18N173-GA
III	2W9F-12A661-SB	VK2W9F-18N173-HA
POS	BLANC-LABEL USED	LABEL MODULE IDENTIFICATION

SCALE 2:1

CONNECTOR HARNESS PIN NUMBER	CIRCUIT IDENTIFICATION	CONNECTOR MODULE PIN NUMBER	CONNECTOR SCHEMATIC PIN NUMBER
J1	01 DRIVER MIRROR MOTOR L/R OUTPUT	DMLO	01
	02 DRIVER MIRROR MOTOR R/L OUTPUT	DMRO	02
	03 DRIVER MIRROR MOTOR UP/DOWN OUTPUT	DMDO	03
	04 DRIVER MIRROR MOTOR DOWN/UP OUTPUT	DMDO	04
	05 DRIVER MIRROR SENSOR FEED OUTPUT	DMSF	05
	06 RES POWER FEED	RESPMR	06
	07 INTERNALLY GROUND	N/C	07
	08 DRIVER LOCK MOTOR OUTPUT	DLMO	08
	09 DRIVER UNLOCK MOTOR OUTPUT	DUMO	09
	10 DRIVER DOUBLE LOCK OUTPUT	DOLMO	10
	11 INTERNALLY GROUND	N/C	11
	12 INTERNALLY GROUND	N/C	12
	13 RES RF DATA	RFRD	13
	14 DRIVER MIRROR SENSOR L/R INPUT	DMSLR	14
	15 DRIVER MIRROR SENSOR UP/DN INPUT	DMSDU	15
	16 DRIVER KEYBARREL LOCK SWITCH	DKLS	16
	17 DRIVER KEYBARREL UNLOCK SWITCH	DKLUS	17
	18 RES CHIP ENABLE OUTPUT	RCEO	18
	19 DRIVER MIRROR SENSOR RETURN	DMSTRN	19
	20 RES RETURN	RESRTN	20
J2	01 UNUSED UNPOPULATED ANALOG REF-VOLTAGE	AREF 2	01
	02 RIGHT MIRROR SELECT SWITCH	RMSS	02
	03 LEFT MIRROR SELECT SWITCH	LMSS	03
	04 UNUSED UNPOPULATED DIGITAL INPUT 18	DI 18	04
	05 INTERNALLY GROUND	N/C	05
	06 DDM SECURITY OUTPUT	DSO	06
	07 MEMORY SET INDICATOR OUTPUT	MFSIO	07
	08 MIRROR FOLD/FLAT SWITCH	MFS	08
	09 UNUSED UNPOPULATED RELAY DRIVE 1	RD1	09
	10 MEMORY SWITCH PACK INPUT (ANALOG)	MSPIN	10
	11 MEMORY SWITCH PACK GND (ANALOG)	MSPRIN	11
	12 REAR WINDOWS LOCKOUT INDICATOR	RWL	12
	13 DRIVER PUDDLE LAMP INTERIOR OUTPUT	DPILIO	13
	14 MIRROR UP-LEFT SWITCH INPUT	MULS	14
	15 MIRROR UP-RIGHT SWITCH INPUT	MURS	15
	16 MIRROR DOWN-LEFT SWITCH INPUT	MDLS	16
	17 MIRROR DOWN-RIGHT SWITCH INPUT	MDRS	17
	18 UNUSED UNPOPULATED RELAY DRIVE 2	RD 2	18
	19 UNUSED UNPOPULATED ANALOG INPUT 4	AL 4	19
	20 UNUSED UNPOPULATED RELAY DRIVE 3	RD 3	20
	21 DRIVER PUDDLE LAMP EXTERIOR OUTPUT	DPLEO	21
	22 MASTER WINDOW INHIBIT SWITCH INPUT	MNIS	22
	23 UNUSED UNPOPULATED DIGITAL INPUT 4	DI 4	23
	24 UNUSED UNPOPULATED DIGITAL INPUT 5	DI 5	24
	25 DRIVER DOOR AJAR SWITCH INPUT	DDAS	25
	26 INTERNALLY GROUND	N/C	26
J3	01 UNUSED UNPOPULATED DIGITAL INPUT 3	DI 3	01
	02 DRIVER UNLOCK LATCH STATUS INPUT	DULLS	02
	03 SCP PHYSICAL LAYER BUS (+)	SCP +	03
	04 SCP PHYSICAL LAYER BUS (-)	SCP -	04
	05 FOLD/FLAT MOTOR IN/OUT OUTPUT	FFMIO	05
	06 FOLD/FLAT MOTOR OUT/IN OUTPUT	FFMOO	06
	07 LOGIC GROUND	LG1	07
	08 POWER GROUND	PG1	08
	09 UNUSED UNPOPULATED DIGITAL OUTPUT 11	DO 11	09
	10 DRIVER LOCK LATCH STATUS INPUT	DLLS	10
	11 LOGIC POWER	VP1	11
	12 SWITCHED SYSTEM POWER	VB2	12

UNLESS OTHERWISE SPECIFIED

SEE WERS ENGINEERING FOR CURRENT RELEASE STATUS
SEE VISTEON-ELD PRODUCT ENGINEERING E-BOM FILES
FOR COMPONENT PART NUMBERS

THIS PRODUCT CONFORMS TO VISTEON-ELD PRODUCT ENGINEERING
SPECIFICATION VE2W9F-13C791-AA

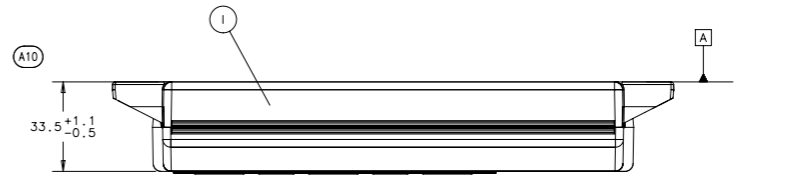
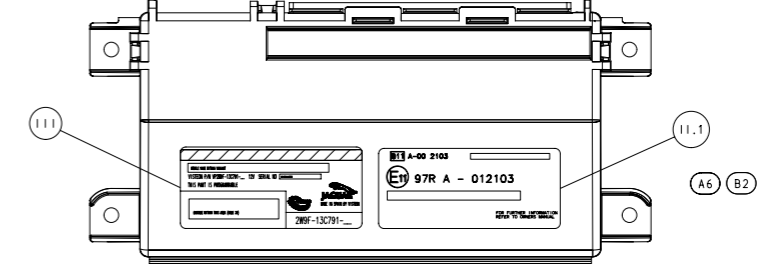
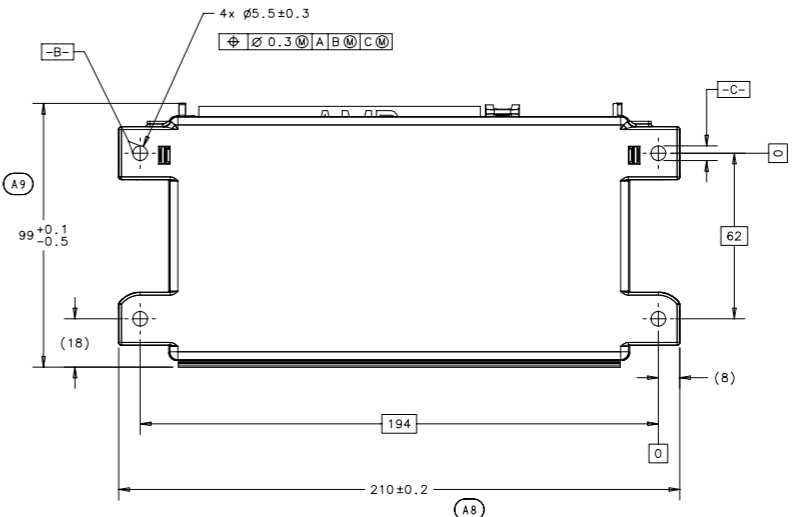
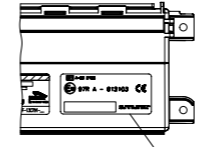
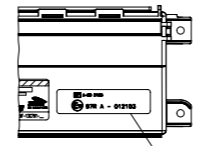
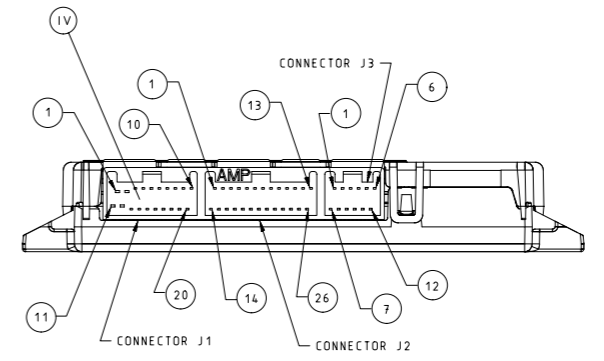
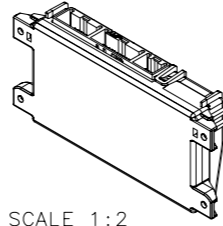
ENGINEERING APPROVAL OF PRODUCTION SAMPLES FROM SUPPLIERS
IS REQUIRED PRIOR TO AUTHORIZATION OF INITIAL PRODUCTION
ENGINEERING APPROVAL MUST BE OBTAINED BEFORE ANY CHANGE
IN MATERIAL OR CONSTRUCTION OR PROCESS CAN BE MADE

MATERIAL RECYCLING CODE OF THE HOUSING
PER SAE J1344: PP-1020

POSITION AND INFORMATION OF THE LABELS ARE
APPROXIMATELY SHOWN

TBD: WILL BE RELEASED WITH THE SOFTWARE ON
THE VISTEON SOFTWARE VAULT *VS-VAULT*

I	HOUSING, DDM, CLAMHELL	XF2F-14B128-AC	1	1	1
II.1	EC, RTA-LABEL	VK2W9F-18N173-MB	1	-	-
II.2	EC, CE, RTA-LABEL	VK2W9F-18N173-NA	-	1	-
II.3	EC-LABEL	VK2W9F-18N173-LA	-	-	1
III	LABEL-MODULE IDENT.	VK2W9F-18N173-FA	1	-	-
III	LABEL-MODULE IDENT.	VK2W9F-18N173-GA	-	1	-
III	LABEL-MODULE IDENT.	VK2W9F-18N173-HA	-	-	1
IV	BOARD ASSEMBLY DDM	VP2W9F-14B115-DC	1	-	-
IV	BOARD ASSEMBLY DDM	VP2W9F-14B115-JC	-	1	-
IV	BOARD ASSEMBLY DDM	VP2W9F-14B115-KC	-	-	1
POS	PART NAME	PART NUMBER	QUANTITY		



LTRS	REVISIONS		
ORIGINATOR	CHECKER	ENGR APP	MATL APP
RELEASED	2W9F-13C791-AC		
DELG-E-11298028-000		011122	
KSCHENK1	AVERLAGI	PHORNSCH	-
CORRECTION OF FORMAL RELEASE: PART NUMBER IS VP2W9F-13C791-AC			
REDRAWN			
A 1	VP2W9F-13C791-AD, WAS VP2W9F-13C791-AC		
A 2	VP2W9F-13C791-BD, WAS VP2W9F-13C791-BC		
A 3	VP2W9F-13C791-CD, WAS VP2W9F-13C791-CC		
A 4	35dd360e.hex WAS 35dd300eA.hex		
A 5	35dd360eB.hex WAS 35dd300eB.hex		
A 6	35dd360eC.hex WAS 35dd300eC.hex		
A 7	VE2W9F-13C791-AA, WAS ES-2W9F-13C791-AA		
A 8	EC- AND CE-LABEL ADDED		
A 9	MATERIAL RECYCLING CODE ADDED		
A 10	210 +/-0.2 WAS (210)		
A 11	99 +/-0.1/-0.5, WAS (99)		
A 12	33.5+1.1/-0.5, WAS (33.5)		
DELG-E-11328804-000		020215	
KSCHENK1	AVERLAGI	PHORNSCH	-
B 1 (POS 111) ACCORDING TO EBOM			
B 2 CORRECTED LABEL POSITION NUMBER IN DRAWING			
DELG-E-11328804-001		020425	
KSCHENK1	AGOTTSC1	PHORNSCH	-
C 1 VK2W9F-18N173-MB, WAS VK2W9F-18N173-MA			
C 2 ADDED LABEL AND VIEW			
C 3 POSITION RENUMBERED			
C 4 ADDED EC-MARK INFORMATION AND FONT SPECIFIED			
DELG-E-11328804-004		020628	
KSCHENK1	AGOTTSC1	PHORNSCH	-

Visteon

THIS DRAWING AND ANY INTELLECTUAL PROPERTY RIGHTS THEREIN ARE PROPERTY OF VISTEON CORPORATION AND NO LICENSES ARE GRANTED UNDER THOSE RIGHTS

REFERENCE 19.10.01

PART MUST COMPLY WITH MATERIAL SPECIFICATION WSS-M99P9999-A1 TO HELP SAFEGUARD HEALTH, SAFETY AND THE ENVIRONMENT

DRAFTED IN ACCORDANCE WITH VISTEON ENGINEERING CAD STANDARDS CURRENT AT INITIAL RELEASE

3RD ANGLE PROJ
DIMENSIONS ARE IN MILLIMETERS

CAD TYPE	CAD LOC.	CAD FILE	VP2W9F-13C791-A RD3V16	DATA
I-IDEAS	BOB	DWG FILE	VP2W9F-13C791-A RD3V122	IS MASTER
OPER. NO.	UNIT	DRAWING	VP2W9F-13C791-AD	

DESIGN	DETAIL	TITLE	SHT 1
KSCHENK1	KSCHENK1	DRIVER DOOR MODULE	OF 1
CHECKED	SAFETY		RH/LH NONE

SCALE	DATE	DIVISION	INTERIOR ELECTRONICS
1:1	011119	PLANT	

Visteon