



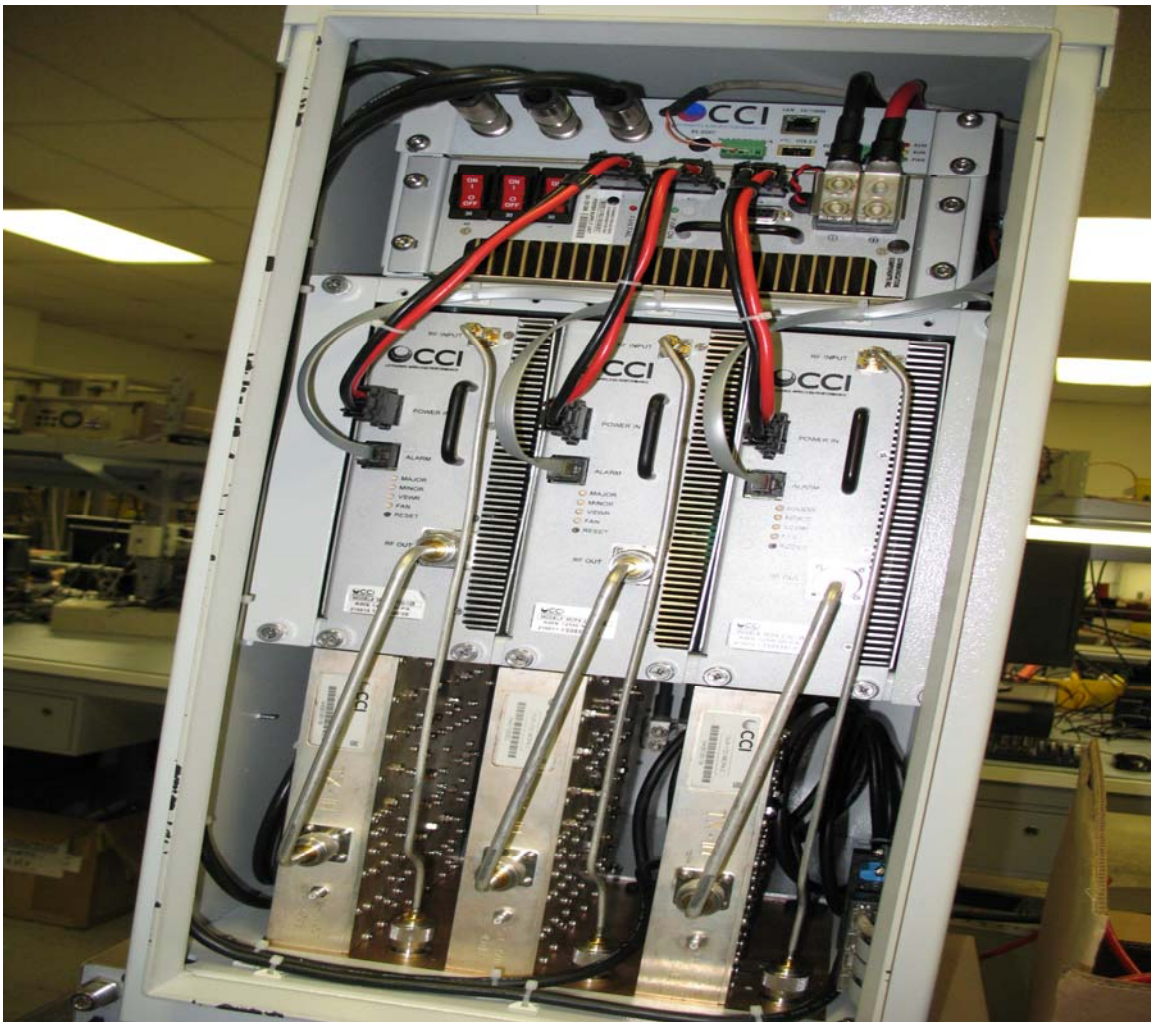
*Communication Components, Inc.
89 Leuning Street
South Hackensack, NJ 07606*

*Phone: 201-342-3338
Fax: 201-342-3339*

RESTRICTED ACCESS OF EQUIPMENT AND DOCUMENTATION NOTICE

This Restricted Access of Equipment and Documentation Notice is to inform _____ that access to equipment and related documentation supplied by Communication Components Inc. is to be restricted to only authorized users by means to ensure the security of the equipment and confidentiality of related documentation at all times, and only designated professionals shall be allowed to maintain or service the equipment. This notice includes, but is not limited to, internal photographs to be held confidential and out of the public domain.

The device will be installed at secured cell tower locations where access to the equipment enclosures is restricted to certified technicians by the licensee. When the device is installed outdoors, in a fenced area or rooftop site, we utilize a secure cabinet for deployment (as pictured below)





Thank you,

Communication Components Inc.

Dennis Nathan

By: _____

Name: __Dennis Nathan__

Title: __President__

Date: __02/01/11__

